

- RT-3 Membrane Roof - Concrete Structure**
- Bauder Capping Sheet 15mm
  - Bauder Underlay
  - Bauder FA-TE Baselayer 80-210 mm (tapered insulation to form min 1:80 falls, average 115mm)
  - Vapour check Bituminous 3 mm
  - In-situ concrete slab to S.E. details

- ExW2a Brick Parapet Wall**
- Facing Brickwork 102.5mm
  - Cavity including windposts/MF to SE design 150mm
  - Facing Brickwork 102.5mm

- ExW1 Cavity Wall**
- Facing Brickwork 102.5 mm
  - Cavity 50 mm
  - Thermal Insulation Celotex GA4000 100 mm
  - Breather Membrane
  - Cementitious board lining 12mm
  - Metal C Studs to S.E. Details 100 mm (Metsec or similar)
  - Thermal Insulation mineral wool between studs 100 mm
  - Vapour control layer
  - LW1 lining type

- CF1- Suspended Ceiling System**
- CasoLine MF Varies
  - Plasterboard 12.5 mm
  - Skim 3 mm

- Metsec Structural Angle**

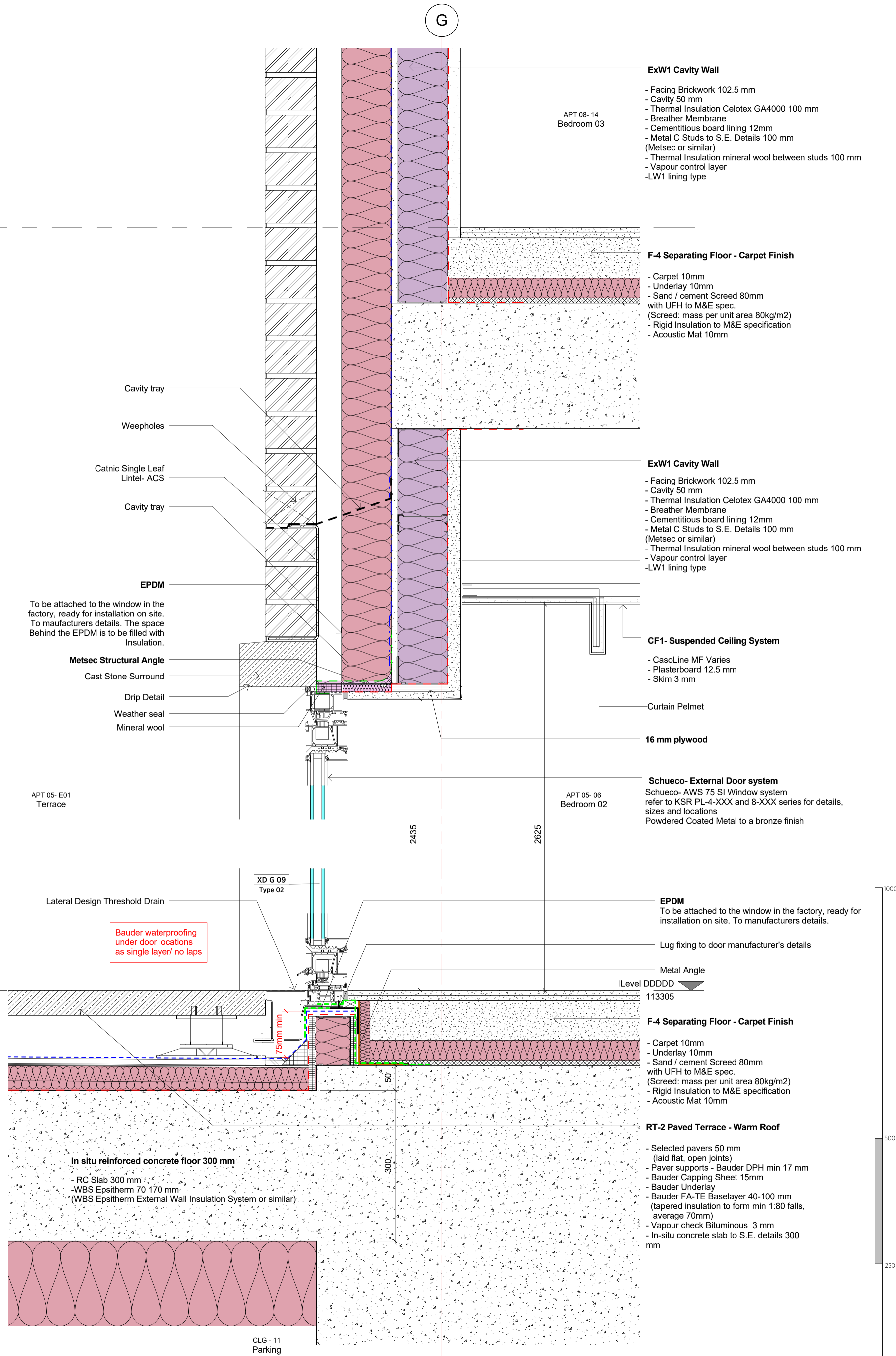
- Vitrocsa- Sliding Doors**
- Vitrocsa- TH+32 Range  
2 track 4 panel sliding doors  
refer to KSR PL-4-XXX and 8-XXX series for details,  
sizes and locations  
Natural Metal Finish

- F-3 Separating Floor - Timber Finish**
- Engineered Timber Boards 20 mm
  - Adhesive bed 5 mm
  - Sand / cement Screed with UFH & M&E spec. 75 mm (Screed: mass per unit area 80 kg/m<sup>2</sup>)
  - Rigid insulation to M&E specification 40 mm
  - Acoustic mat 10 mm

- EPDM**  
To be attached to the window in the factory, ready for installation on site. To manufacturers details.

- Level DDDDDL** Ground Floor  
113305

- RT-2 Paved Terrace - Warm Roof**
- Selected pavers 50 mm (laid flat, open joints)
  - WBS Epsitherm 70 170 mm
  - Paver supports - Bauder DPH min 17 mm
  - Bauder Capping Sheet 15mm
  - Bauder Underlay
  - Bauder FA-TE Baselayer 40-100 mm (tapered insulation to form min 1:80 falls, average 70mm)
  - Vapour check Bituminous 3 mm
  - In-situ concrete slab to S.E. details 300 mm



- ExW1 Cavity Wall**
- Facing Brickwork 102.5 mm
  - Cavity 50 mm
  - Thermal Insulation Celotex GA4000 100 mm
  - Breather Membrane
  - Cementitious board lining 12mm
  - Metal C Studs to S.E. Details 100 mm (Metsec or similar)
  - Thermal Insulation mineral wool between studs 100 mm
  - Vapour control layer
  - LW1 lining type

- F-4 Separating Floor - Carpet Finish**
- Carpet 10mm
  - Underlay 10mm
  - Sand / cement Screed 80mm with UFH & M&E spec. (Screed: mass per unit area 80kg/m<sup>2</sup>)
  - Rigid insulation to M&E specification
  - Acoustic Mat 10mm

- ExW1 Cavity Wall**
- Facing Brickwork 102.5 mm
  - Cavity 50 mm
  - Thermal Insulation Celotex GA4000 100 mm
  - Breather Membrane
  - Cementitious board lining 12mm
  - Metal C Studs to S.E. Details 100 mm (Metsec or similar)
  - Thermal Insulation mineral wool between studs 100 mm
  - Vapour control layer
  - LW1 lining type

- CF1- Suspended Ceiling System**
- CasoLine MF Varies
  - Plasterboard 12.5 mm
  - Skim 3 mm

- Schueco- External Door system**
- Schueco- AWS 75 SI Window system  
refer to KSR PL-4-XXX and 8-XXX series for details,  
sizes and locations  
Powdered Coated Metal to a bronze finish

- EPDM**  
To be attached to the window in the factory, ready for installation on site. To manufacturers details.

- Level DDDDDL** Ground Floor  
113305

- F-4 Separating Floor - Carpet Finish**
- Carpet 10mm
  - Underlay 10mm
  - Sand / cement Screed 80mm with UFH & M&E spec. (Screed: mass per unit area 80kg/m<sup>2</sup>)
  - Rigid insulation to M&E specification
  - Acoustic Mat 10mm

- RT-2 Paved Terrace - Warm Roof**
- Selected pavers 50 mm (laid flat, open joints)
  - Paver supports - Bauder DPH min 17 mm
  - Bauder Capping Sheet 15mm
  - Bauder Underlay
  - Bauder FA-TE Baselayer 40-100 mm (tapered insulation to form min 1:80 falls, average 70mm)
  - Vapour check Bituminous 3 mm
  - In-situ concrete slab to S.E. details 300 mm

**General notes:**  
This drawing is copyright of KSR architects. This drawing must be read in conjunction with the Designer's Risk Assessment, specification and all other relevant documentation and drawings. KSR architects accept no liability for any expense, loss or damage of whatsoever nature and however arising from any variation made to this drawing or in the execution of the work to which it relates which has not been referred to them and their approval obtained.  
Do not scale from this drawing or the digital data, only figured dimensions are to be used. For Planning refer to linear scale. Check all dimensions on site prior to carrying out any works - advise of any discrepancy

**Notes/Legends**

C	Roofing and coping details revised	30 Apr 19	BS
B	Planning conditions	28 Feb 19	SAS
A	Door Planning Details Sign-off	09 Jun 19	SE
Rev	Description	Date	Drawn

**Planning**

**KSRARCHITECTS**  
KSR Architects LLP  
14 Grenville Street  
London W1R 0ND  
t: +44 (0)20 7692 5000  
www.ksararchitects.com

Project:  
**29 NEW END**

Title:  
**Typical Window Details 5**

Date:	12/2018	Drawn By:	Author	Checked:	Checked
Scale:	1:5 @ A1	1:5 @ A1	Status:	Planning	
Project Ref:	NEN	Drawing No:	NEN - PL-4-416	Revision:	C

**1 Sliding door detail**  
1 : 5

**2 Hinged door detail**  
1 : 5

