

General notes:
This drawing is copyright of KSR architects. This drawing must be read in conjunction with the Designer's Risk Assessment, specification and all other relevant documentation and drawings. KSR architects accept no liability for any expense, loss or damage of whatsoever nature and however arising from any variation made to this drawing or in the execution of the work to which it relates which has not been referred to them and their approval obtained.
Do not scale from this drawing or the digital data, only figured dimensions are to be used. For Planning refer to linear scale. Check all dimensions on site prior to carrying out any works - advise of any discrepancy

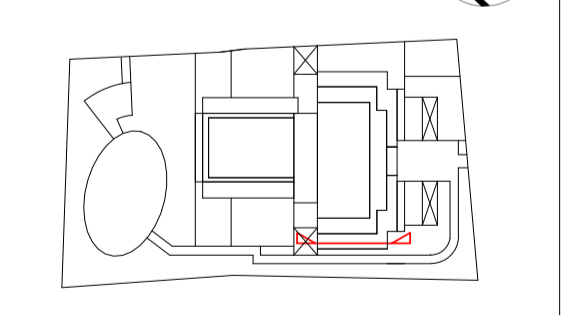
Notes/Legends

C	Rolling and coping details revised	30 Apr 19	BS
B	Planning conditions	28 Feb 19	SAS
A	Final Planning Details Sign-off	09 Jun 19	SE
Rsk	Discipline	Date	Chkd

© KSR architects

Stamp

Planning



KSRARCHITECTS
KSR Architects LLP
14 Greenleaf Street
London NW1 0ND
t +44 (0)20 7692 5000
www.ksararchitect.com

Project:
29 NEW END

Title:
Section F Details 2-2

Date	12/20/18	Drawn By	Author	Checked	Checked
Scale	1:50 @ A1	1:50 @ A1	Status	Planning	

Project Ref	Drawing No	Revision
NEN	NEN - PL-4-161.2	C

R **DIAGRAM SECTION F**
1 : 50

1 **Section F - Planter 2**
1 : 5