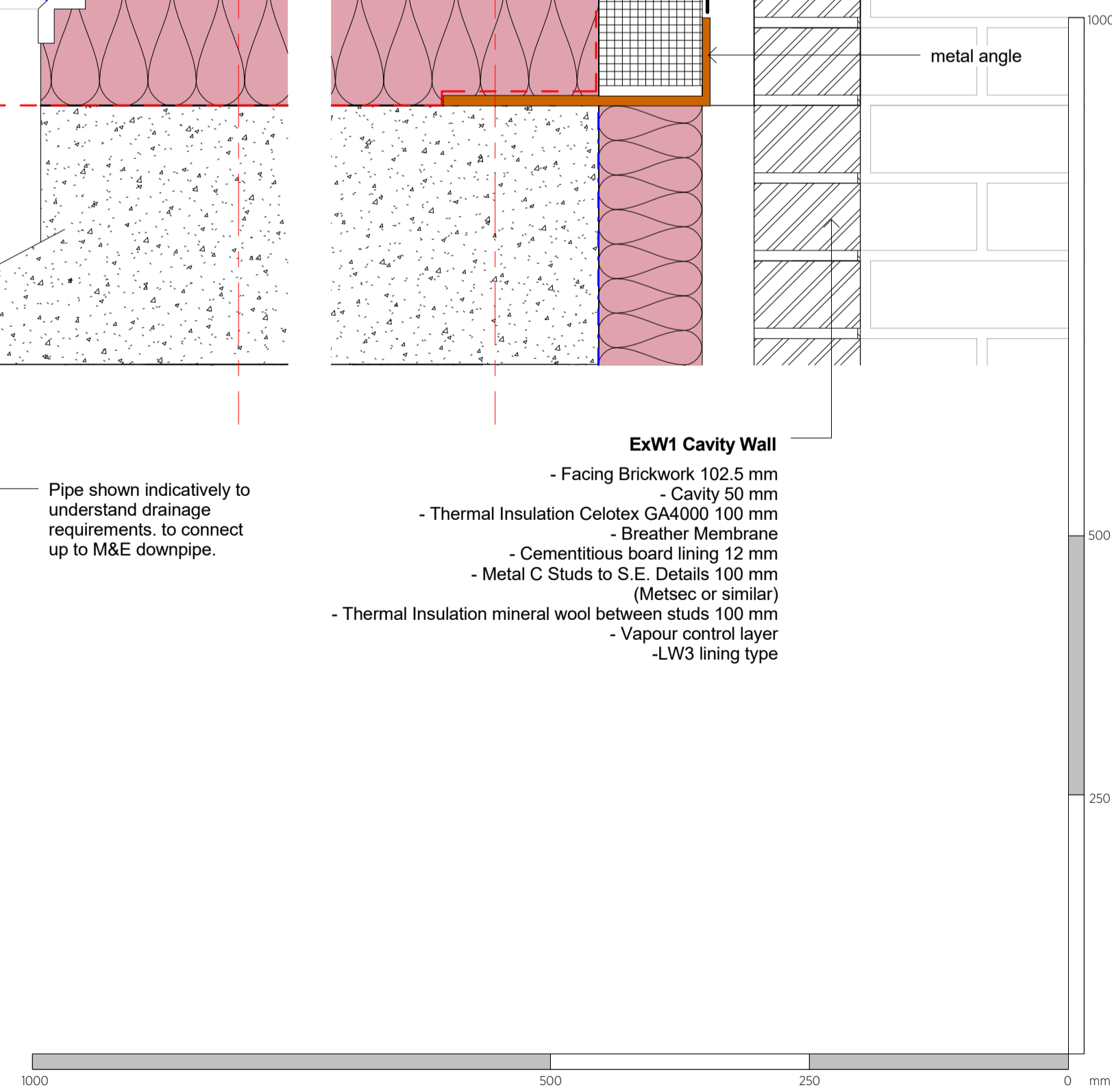


**1 Section F - Planter 2**  
1 : 5



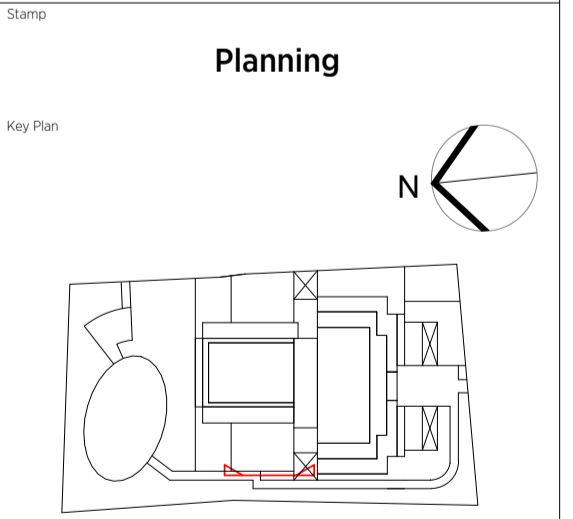
**ExW1 Cavity Wall**  
 - Facing Brickwork 102.5 mm  
 - Cavity 50 mm  
 - Thermal Insulation Celotex GA4000 100 mm  
 - Breather Membrane  
 - Cementitious board lining 12 mm  
 - Metal C Studs to S.E. Details 100 mm (Metsec or similar)  
 - Thermal Insulation mineral wool between studs 100 mm  
 - Vapour control layer  
 - LW3 lining type

Pipe shown indicatively to understand drainage requirements, to connect up to M&E downpipe.

General notes:  
 This drawing is copyright of KSR architects. This drawing must be read in conjunction with the Designer's Risk Assessment, specification and all other relevant documentation and drawings. KSR architects accept no liability for any expense, loss or damage of whatsoever nature and however arising from any variation made to this drawing or in the execution of the work to which it relates which has not been referred to them and their approval obtained.  
 Do not scale from this drawing or the digital data, only figured dimensions are to be used. For Planning refer to linear scale. Check all dimensions on site prior to carrying out any works - advise of any discrepancy

Notes/Legends

C	Railings and coping details revised	30 Apr 19	BS
B	Planning conditions	28 Feb 19	SAS
A	Final Planning Details Sign-off	09 Jan 19	E
Rev	Description	Date	Drawn



**KSRARCHITECTS**  
 KSR Architects LLP  
 14 Greenland Street  
 London NW1 0ND  
 Email: info@ksrarchitects.com  
 Tel: +44 (0)20 7692 5000  
 Website: www.ksrarchitects.com

Project:  
**29 NEW END**

Title:  
**Section F Details 2-1**

Date:	12/20/18	Drawn By:	Author	Checked:	Checked
Scale:	1:5 @ A1	1:5 @ A1	Status:	Planning	

Project Ref:	Drawing No:	Revision:
NEN	NEN - PL-4-161.1	C