

ExW1 Cavity Wall

- Facing Brickwork 102.5 mm
- Cavity 50 mm
- Thermal Insulation Celotex GA4000 100 mm
- Breather Membrane
- Cementitious board lining 12 mm
- Metal C Studs to S.E. Details 100 mm (Metsec or similar)
- Thermal Insulation mineral wool between studs 100 mm
- Vapour control layer
- LW3 lining type

F-3 Separating Floor - Timber Finish

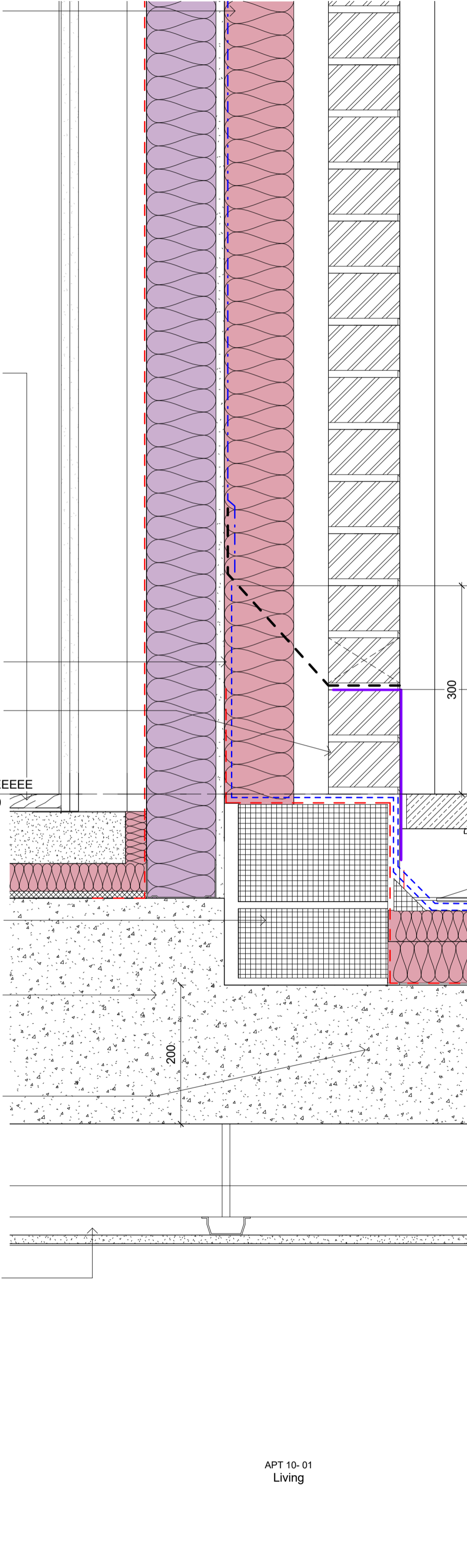
- Engineered Timber Boards 20 mm
- Adhesive bed 5 mm
- Sand / cement Screed with UFH to M&E spec. 75 mm (Screed: mass per unit area 80 kg/m²)
- Rigid insulation to M&E specification 40 mm
- Acoustic mat 10 mm

CF1- Suspended Ceiling System

- CasoLine MF Varies
- Plasterboard 12.5 mm
- Skim 3 mm

APT 12-01 Living

APT 10-01 Living



Schueco- External Windows
Schueco- AWS 75 SI Window system refer to KSR PL-4-XXX and 8-XXX series for details, sizes and locations
Powder Coated Metal to a bronze finish

30 x 10mm balusters
50 x 15mm supports
30 x 10mm bottom rail
Powder coated MS railings
Cast Stone Profile

RT-1 Paved Terrace - Warm Roof

- Selected pavers 50 mm (laid flat, open joints)
- Paver supports - Bauder DPH min 17 mm
- Bauder Capping Sheet 15 mm
- Bauder Underlay
- Bauder FA-TE Baselayer (tapered insulation to form min 1:80 falls)
- Bauder VIP 60 mm (bridged with 60mm PIR Flatboard infill panels)
- Bauder Bituminous Vapour Barrier 5mm

ExW7d Render on Block - Parapet Walls

- Render 22mm
- Blockwork 75 mm
- Blockwork include windposts/MF to SE design
- Cavity 154mm
- Facing Brickwork 102.5 mm

ExW1 Cavity Wall

- Facing Brickwork 102.5 mm
- Cavity 50 mm
- Thermal Insulation Celotex GA4000 100 mm
- Breather Membrane
- Cementitious board lining 12 mm
- Metal C Studs to S.E. Details 100 mm (Metsec or similar)
- Thermal Insulation mineral wool between studs 100 mm
- Vapour control layer
- LW3 lining type

Catnic Single Leaf Lintel- ACS

Cast Stone Coping / Fascia/ Terrace openings

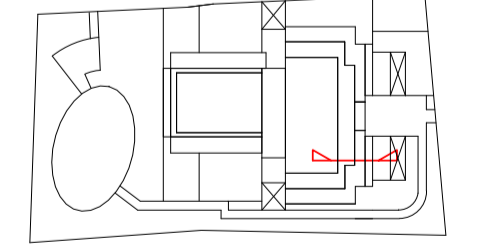
EPDM
To be attached to the window in the factory, ready for installation on site. To manufacturers details. The space Behind the EPDM is to be filled with insulation

General notes:
This drawing is copyright of KSR architects. This drawing must be read in conjunction with the Designer's Risk Assessment, specification and all other relevant documentation and drawings. KSR architects accept no liability for any expense, loss or damage of whatsoever nature and however arising from any variation made to this drawing or in the execution of the work to which it relates which has not been referred to them and their approval obtained.
Do not scale from this drawing or the digital data, only figured dimensions are to be used. For Planning refer to linear scale. Check all dimensions on site prior to carrying out any works - advise of any discrepancy

Notes/Legends

C	Railing and coping details revised	30 Apr 19	BS
B	Planning conditions	28 Feb 19	SAS
A	Final Planning Details Sign-off	09 Jan 19	SE
Rev	Description	Date	Drawn
© KSR architects			
Stamp:			

Planning



KSRARCHITECTS
KSR Architects LLP
14 Greenland Street
London NW10 0ND
T: +44 (0)20 7692 5000
www.ksararchitects.com

Project: **29 NEW END**

Title: **Section E Details 1-2**

Date:	12/09/18	Drawn By:	Author	Checked:	Checked
Scale:	1:50 @ A1	1:100 @ A2	Status:	Planning	
Project Ref:	NEN	Drawing No:	NEN - PL-4-150.2	Revision:	C

DIAGRAM SECTION E - SOUTH
1:50

3F TERRACE
1:5

