

Schueco- External Doors
 Schueco- AWS 75 SI Window system
 refer to KSR PL-4-XXX and 8-XXX series for
 details, sizes and locations
 Powder Coated Metal to a bronze finish

APT 07- 04
 Master
 Bedroom

F-3 Separating Floor - Timber Finish
 - Engineered Timber Boards 20 mm
 - Adhesive bed 5 mm
 - Sand / cement Screed with UFH and M&E
 spec. 75 mm
 (Screed: mass per unit area 80 kg/m²)
 - Rigid insulation to M&E specification 40
 mm
 - Acoustic mat 10 mm

Lateral Design threshold drain
 Threshold drain Aqualvel CT1
 Metsec / SFS 70mm wide frame
 filled with mineral wool.

Sheating Board 12mm
 both sides of Metsec/ SFS

Level 1 First FFL
 116680

Metal angle
 Metal Plate
 for fixing Metsec/ SFS

In situ reinforced concrete floor 250 mm

EPDM
 To be attached to the window in the
 factory, ready for installation on site.
 To manufacturers details. The space
 Behind the EPDM is to be filled with
 insulation.

Metsec Structural Angle
 1
 4-759

16 mm plywood
 Insulation

APT 01- 01
 Living

Schueco- AWS 75 SI Window system
 refer to KSR PL-4-XXX and 8-XXX series for
 details, sizes and locations
 Powder Coated Metal to a bronze finish

XD 01 13
 Type 02

XD G 08
 Type 02

Powder coated MS railings

30 x 10mm balusters

50 x 15mm supports

F-13 Balcony
 - Stone paving slabs 20mm
 (laid flat, open joints)
 - Paver supports - Bauder DPH min 17 mm (39 mm shown)
 - Bauder Top Layer / Cap Sheet 15 mm
 - Bauder Underlay
 - Screed (laid to falls) min 6 mm (15 mm shown)

In situ reinforced concrete floor 150 mm

Cementitious render

Catnic Single Leaf Lintel
 (only 1 brick available for each lintel).

Cast Stone Coping / Fascia/ Terrace openings

ExW1 Cavity Wall
 - Facing Brickwork 102.5 mm
 - Cavity 50 mm
 - Thermal Insulation Celotex GA4000 100 mm
 - Breather Membrane
 - Cementitious board lining 12 mm
 - Metal C Studs to S.E. Details 100 mm
 (Metsec or similar)
 - Thermal Insulation mineral wool between studs 100 mm
 - Vapour control layer
 - LW3 lining type

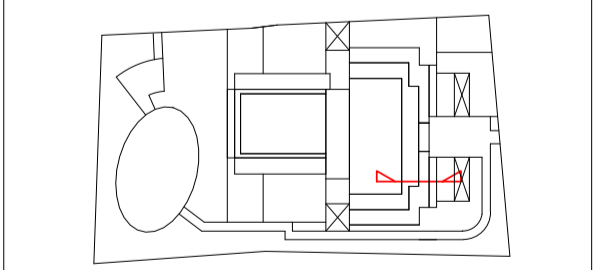
General notes:
 This drawing is copyright of KSR architects. This drawing must be
 read in conjunction with the Designer's Risk Assessment,
 specification and all other relevant documentation and drawings.
 KSR architects accept no liability for any expense, loss or damage
 of whatsoever nature and however arising from any variation
 made to this drawing or in the execution of the work to which it
 relates which has not been referred to them and their approval
 obtained.
 Do not scale from this drawing or the digital data, only figured
 dimensions are to be used. For Planning refer to linear scale.
 Check all dimensions on site prior to carrying out any works -
 advise of any discrepancy

Notes/Legends

C	Railing and coping details revised	30 Apr 19	BS
B	Planning conditions	28 Feb 19	SAS
A	Final Planning Details Sign-off	09 Jan 19	SE
Rsk	Discipline	Date	Check

© KSR architects

Stamp: **Planning**



KSRARCHITECTS
 KSR Architects LLP
 14 Greenland Street
 London NW10 0ND
 T +44 (0)20 7692 5000
 www.ksararchitects.com

Project:
29 NEW END

Title:
Section E Details 1-1

Date:	12/09/18	Drawn By:	Author	Checked:	Check
Scale:	1:50 @ A1	1:50 @ A1	Status:	Planning	

Project Ref:	Drawing No:	Revision:
NEN	NEN - PL-4-150.1	C

R **DIAGRAM SECTION E - SOUTH**
 1 : 50

1 **1F BALCONY**
 1 : 5

