

Notes
 All dimensions from this drawing.
 All dimensions are drawn in millimeters.
 Drawing & design copyright LUC.
 Reproduction of this drawing in whole or in part is prohibited without prior permission.

For planting refer to 7096-LD-PLN-400 for planting details

Existing planting retained and protected during works to BS5837:2012

Sand, repair and re-stain (to match existing) boundary treatment to the canal. Exact extents to be agreed on site

E03 100mm offset between boundary and resin gravel

Existing raised bed retained and replanted

Existing raised bed retained and replanted

Proposed planting area, refer to PLN-LD-400 for planting details

NEW VISITOR CENTRE
 Refer to Architects drawings +22.50FFL

Existing pedestrian and vehicle gates sanded, primer applied and re-painted, colour to be agreed with client. See specification

D02 Channel drain to engineer's specification

F05 Map board and external signage. Vitreous enamel, artwork TBC

S06 Sub-base to relocated container - Recycled site-won concrete and brick from rear patio, depth to engineers detail

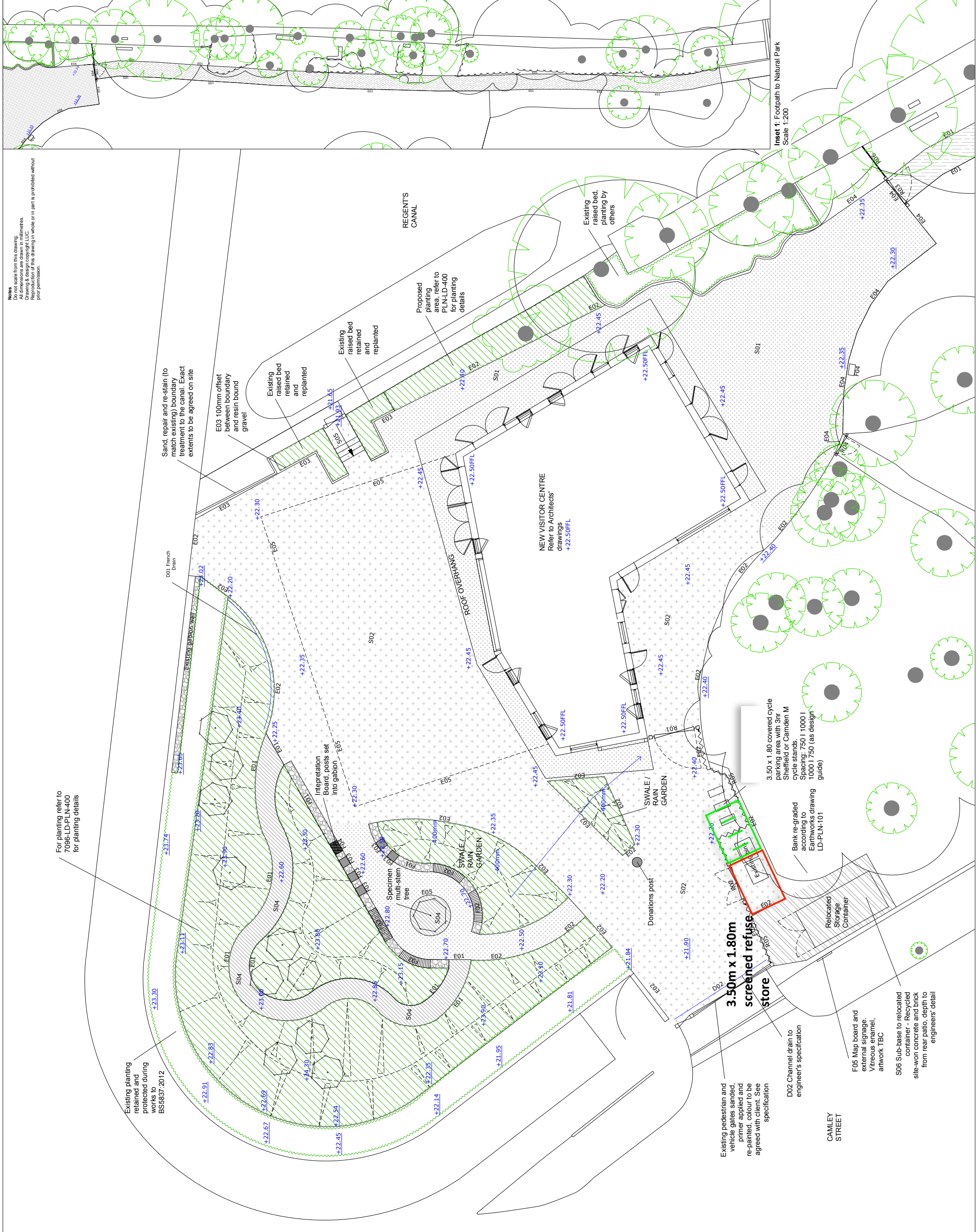
3.50m x 1.80m screened refuse store

3.50 x 1.80 covered cycle parking area with 3m Sheffield or Camden M cycle stands. Spacing: 750 | 1000 | 1000 | 750 (as design LD-PLN-101)

Bank re-graded according to Earthworks drawing LD-PLN-101

Relocated Storage Container

CAMLEY STREET



Key

Proposed finished site levels	+22.70
Existing site levels	+21.63
Existing trees	(Symbol)
Proposed trees	(Symbol)
Existing Planting	(Symbol)
Proposed Planting	(Symbol)

Surfaces

S01 - Resin bound gravel - Pedestrian loading	(Symbol)
S02 - Resin bound gravel - Vehicular loading	(Symbol)
S03 - Self-binding gravel	(Symbol)
S04 - Woodchip footpath	(Symbol)
S05 - Timber steps to barge	(Symbol)

Edgings

E01 - Timber Edging - Standard	(Symbol)
E02 - Timber Edging - Thick	(Symbol)
E03 - Timber Edging with gravel margin	(Symbol)
E04 - Site won cobbles	(Symbol)
E05 - Metal edging	(Symbol)

Furniture

F01 - Gabion Wall	(Symbol)
F02 - Bench topped gabion	(Symbol)
F03 - Gabion bug hotel	(Symbol)
F04 - Interpretation Lectern	(Symbol)
F05 - Map and Signage board (wall mounted)	(Symbol)

Railings, Fences & Gates

R01 - Vehicle gate to side of building	(Symbol)
R02 - Bin store gate	(Symbol)
R03 - Pedestrian gate to natural park	(Symbol)
R04 - Pedestrian gate to natural park	(Symbol)
R05 - Willow hurdle fence with PSC hardwood timber fence posts	(Symbol)
R06 - Timber knee rail	(Symbol)

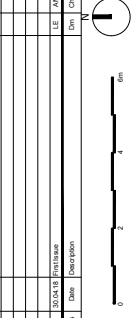
Drainage

D01 - French drain	(Symbol)
D02 - Channel drain	(Symbol)

Drawing notes
 Refer to the following other layout drawings for further details:
 7096-LD-PLN-000 Existing Site
 7096-LD-PLN-002 Edgings Reference Plan
 7096-LD-PLN-003 Furniture Reference Plan
 7096-LD-PLN-004 Demolitions
 7096-LD-PLN-100 Soft Landscape
 7096-LD-PLN-400 Construction Details
 7096-LD-PLN-600 series
 For all proposed works refer to the relevant construction detail and NBS specification clause

Project Information

Project	Camley Street Natural Park
Client	New Visitor Centre
Scale	1:100 @ A1
Status	Tender
Drawing Title	Hard Landscape and General Arrangement



LUC LUC London
 43 Chilton Street, London, NW1 1JD
 +44 (0)20 7366 9766
 www.lucdesign.co.uk

Project: Camley Street Natural Park
 Client: New Visitor Centre
 Scale: 1:100 @ A1
 Status: Tender
 Drawing Title: Hard Landscape and General Arrangement

Job No: 7096-LD-PLN-001
 Issue: A