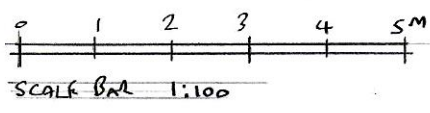


New 100mm square section hollow metal posts painted black
 New metal infill railings to match gate either side.
 Existing gates taken off & rehung on new posts.

See drawing 10907/02 for plan.

Note:
 - original steel plates removed from gates.
 Provide small square mesh to rear face of new railings & existing gates, painted black.



REV A - steel plates removed from gates 23/05/19

Metcalf Briggs Surveyors
 Building Surveyors – CDM Co-ordinators
 Project Managers – Party Wall Surveyors
 1 Woodview, Langdon Hills, Basildon,
 Essex SS16 6TZ
 Tel: 01268 950155

Project: 88 Arlington Road & 1 Mary Terrace,
 London NW1 7HT

Title: Reposition Gates – Proposed Elevation

Drawing No. 10907/04 *A*

Scale: 1:100 **Date:** 26th March 2019