

Project: Royal Free Hospital
Quotation Reference: Q10201
Date: 22 Nov 2018

Customer Unit Reference	AHU-1	Serving	AHU 01 Supply
Unit Reference	Q10201-01-2		
Model Reference	Non-standard		

AHU Details

Design Supply Air Volume	0.4	m ³ /s
External Static Pressure	300	Pa
Unit Velocity	0.69	m/s

Energy Use

	Supply on Clean Filters	Overall	
Specific Fan Power	0.90	0.89	kW/(m ³ /s)

AHU Construction

Framework	40 mm
Framework Coating	Anodized
Panel Depth	25 mm
External Panel Finish	GWG Plastisol 0.9mm
Internal Panel Finish	Galv Sheet 0.9mm
Panel Insulation	Mineral Wool 25mm

Construction

Unit Location	External
Weather Roof	MICA Duo Pitch Roof
Baseframe	100 x 50 PFC
Leakage Class	L3

Overall Unit Dimensions

Length	Width	Height	Weight (Per Unit)
7570 mm	1140 mm	630 mm	1340 kg

Section Weights and Dimensions

Section No.	Length	Width	Height	Weight Approx +/-5%
A	1980 mm	1140 mm	630 mm	313 kg
B	1400 mm	1140 mm	630 mm	236 kg
C	1100 mm	1140 mm	630 mm	219 kg
D	1420 mm	1140 mm	630 mm	290 kg
E	1670 mm	1140 mm	630 mm	283 kg

Attenuator

Type	AHU Mounted
Airway Velocity	2.08 m/sec
Air PD	2.00 Pa
Air way	100.00 mm
Size H X W	550.00x1060.00 mm

Construction

Splitter Thickness	200 mm
Length of Splitter	600 mm
Splitter Insulation	Mineral Wool
Splitter Face	Full Length - Standard

Accessories

We are unable to guarantee a resultant noise level within the space - Acoustic analysis to be carried out by others.

Inlet Section

Component	Damper		Construction	
Air Pressure Drop	0.00	Pa	Casing	Aluminium EN AW6060 T6
			Control	Extended Spindle

Accessories

Damper actuators to be provided and fitted by others.
 Traffolyte Component label

Heating Coil

			Construction	
Air On / Off	-5.00/12.0	°C/°C	Casing Material	Stainless Steel 304
Duty	8.24	kW	Tube Material	Copper
Water(Inlet)/(Outlet)	82.00/71.00	°C/°C	Fin Material	No Fins
Water PD	9	kPa	Connection Size	1 x 3/4"(F) / 1 x 3/4"(R)
Water Flow Rate	0.18	L/s		
Air Pressure Drop	3.00	Pa		

Accessories

Valve and actuator to be supplied and fitted by others
 Traffolyte Component label

Project: Royal Free Hospital
Quotation Reference: Q10201
Date: 22 Nov 2018

Customer Unit Reference	AHU-1	Serving	AHU 01 Supply
Unit Reference	Q10201-01-2		
Model Reference	Non-standard		

Plenum Section

Length	500	mm
Access Side	Right	

Accessories

Access Porthole Fitted
 Traffolyte label - Access
 Factory fitted IP44 Internal bulkhead light (60W) wired to an IP66 external switch
 Factory fitted viewport

Panel Filter

			Construction	
Clean PD	59	Pa	Grade	Coarse 70%(ISO16890)
Mean	104	Pa	Media	Card Frame-Cotton/Synthetic Media
Recommended dirty	150	Pa	Withdrawal	Front
			Size 1 / Qty	1 x 595 x 295 x 47 mm

Accessories

Access Porthole Fitted
 Factory fitted Dwyer Minihelic gauge (Range 0-250 Pa)
 Traffolyte Component label

Supply Fan - Dual Fan (100%-100%)

			Construction	
Design Air Volume	0.4	m ³ /s	Impeller	Backward Curve
Total Fan Resistance	701	Pa	Internal Isolation	Rubber
Fan Speed	2303	r/min		
Frequency @ Design Speed	31.64	Hz		
Max Frequency	50.0	Hz		
Maximum Fan Speed	3640	r/min		
Efficiency	49.01	%		

Motor Data

			Construction	
FLC	3.20	Amps	Type	EC
Total Input Power	0.57	kW		
Motor Power	2.50	kW		
Motor Speed	3640	r/min		
Electrical Supply	400/3/50.00			

Accessories

Access Porthole Fitted
 Fan Healthy Contacts (For integration in to the controls system)
 Removable wire mesh guard is fitted behind the fan access door.
 Factory fitted IP44 Internal bulkhead light (60W) wired to an IP66 external switch
 Factory fitted viewport
 Traffolyte Component label
 Motor details above are per fan (where multiple fans have been selected)
 Inlet Flexible Connection
 Factory Fitted Inlet Guard
 Backdraft Damper will be fitted to fan
 The EC fan will be wired to an externally mounted IP66 rated isolator and IP54 terminal box with integral speed potentiometer. Terminals for BMS connections.

Heating Coil

			Construction	
Air On / Off	5.00/12.1	°C/°C	Casing Material	Inox 304 1.5 mm
Duty	3.44	kW	Tube Material	CU
Water(Inlet)/(Outlet)	14.00/10.80	°C/°C	Fin Material	CU-0.10
Water PD	11.07	kPa	Connection Size	1 x 3/4"(F) / 1 x 3/4"(R)
Water Flow Rate	0.28	L/s		
Air Pressure Drop	30.00	Pa		

Project: Royal Free Hospital
Quotation Reference: Q10201
Date: 22 Nov 2018

Customer Unit Reference	AHU-1	Serving	AHU 01 Supply
Unit Reference	Q10201-01-2		
Model Reference	Non-standard		

Accessories

Run around coil selection compliant to ERP2018 (Ecodesign directive 1253/2014)
 Runaround coil pump and inter-connecting pipework designed, supplied and installed by others.
 Valve and actuator to be supplied and fitted by others
 Traffolyte Component label

Plenum Section

Length	500	mm
Access Side	Right	

Accessories

Access Porthole Fitted
 Traffolyte label - Access
 Factory fitted IP44 Internal bulkhead light (60W) wired to an IP66 external switch
 Factory fitted viewport

DX Cooling Coil

DX Cooling Coil			Construction	
Air On (db/wb)	30.00/20.00	°C/°C	Casing Material	Stainless Steel 304
Air Off (db/wb)	18.0/15.8	°C/°C	Tube Material	Copper
Duty	6.27	kW	Fin Material	Copper/PreTinned
Refrigerant	R410a		Connection Size	1 x 1 x 5/8"(F) / 1 x 1 x 5/8"(R)
Refrigerant PD	17	kPa	Eliminators	not needed - Not Incl.
Evaporating Temp	6.0	°C	Drain Tray	4 S Steel Removable draintray
Face Velocity	1.09	m/s		
Air Pressure Drop	6.00	Pa		

Accessories

DX coil supplied with capped ends and a small nitrogen charge. All refrigeration components and works by others.
 Traffolyte Component label
 Coil is selected for use as a Reverse Cycle Heat Pump (Initial selection only - design approval required)
 1 (One) Circuit DX R410A Cooling / Heating Coil
 Heating cycle air on: 12°C
 Heating cycle air off: 20°C
 Heating cycle duty: 3.9
 Internal Volume: 3.1 litres
 Check to ensure Condensers selected match with the above DX Coil

Plenum Section

Length	500	mm
Access Side	Right	

Accessories

Access Porthole Fitted
 Traffolyte label - Access
 Factory fitted IP44 Internal bulkhead light (60W) wired to an IP66 external switch
 Factory fitted viewport

Rigid Filter

Rigid Filter			Construction	
Clean Pd	41	Pa	Grade	ePM1 55%(ISO16890)
Mean	121	Pa	Media	ABS Frame/Glass Fibre Media
Recommended dirty	200	Pa	Withdrawal	Front
			Size 1 / Qty	1 x 492 x 592 x 292 mm

Accessories

Factory fitted Dwyer Minihelic gauge (Range 0-500 Pa)
 Traffolyte Component label

Project: Royal Free Hospital
Quotation Reference: Q10201
Date: 22 Nov 2018

Customer Unit Reference	AHU-1	Serving	AHU 01 Supply
Unit Reference	Q10201-01-2		
Model Reference	Non-standard		

Indirect Humidifier		Construction	
Humidification Required	30.40	kg/h	Control
Duty	26.3	kW	Proportional-MODbus

Drain Pan		Construction	
Size	1060 mm	Material	Stainless Steel

Accessories

Access Porthole Fitted
 Distributor pipes will be factory fitted.
 Humidifier supplied factory fitted to the side of the AHU.
 Humidifier supplied in a Weather-proof enclosure factory fitted to the side of the AHU.
 Manufacturers site attendance for commissioning of Humidifier (see additional costs)
 Traffolyte Component label
 Factory fitted IP44 Internal bulkhead light (60W) wired to an IP66 external switch
 Factory fitted viewport
 Drain Tray

Type	Standard
Width	1060 mm
Material	Stainless Steel
Connection Side	Right

Outlet Section		Construction	
Component	Damper - Spigot	Casing	Aluminium EN AW6060 T6
Air Pressure Drop	0.00	Pa	Control
			Manual

Accessories

Damper fitted with quadrant for manual adjustment (Air Balancing by others)

Project: Royal Free Hospital
Quotation Reference: Q10201
Date: 22 Nov 2018

Customer Unit Reference	AHU-1	Serving	AHU 01 Supply					
Unit Reference	Q10201-01-2							
Model Reference	Non-standard							

AHU Acoustic Data:

Acoustic Data (Supply Fan Sound Power Level):

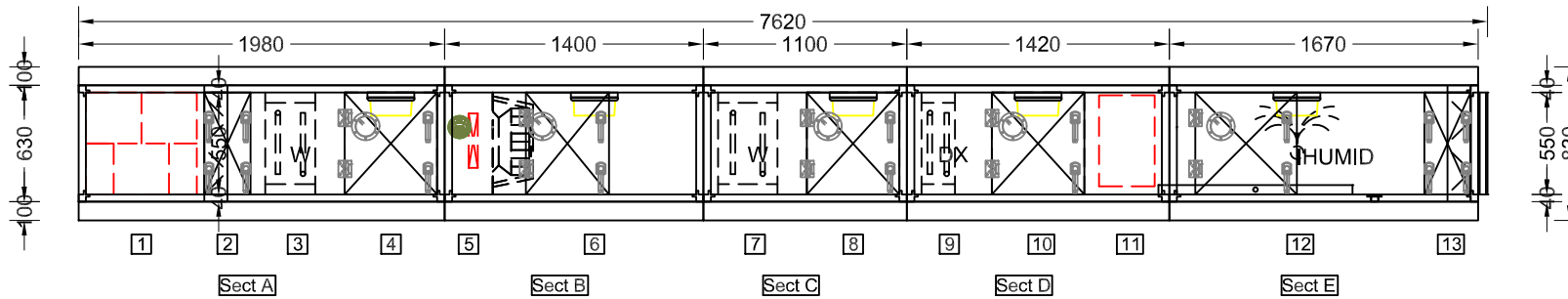
	63	125	250	500	1K	2K	4K	8K
Frequency(Hz)	63	125	250	500	1K	2K	4K	8K
Supply Fan Inlet Lw (dB):	78	74	76	72	67	67	63	58
Supply Fan Outlet Lw (dB):	79	78	81	75	77	76	70	65

Acoustic Data (Attenuator Insertion Loss - Supply):

	63	125	250	500	1K	2K	4K	8K
Frequency(Hz)	63	125	250	500	1K	2K	4K	8K
Static Insertion Loss (dB)	3	7	14	28	37	37	29	24

The In-duct Sound Power Level Spectra are in dB re-1pW.

The fan sound power levels shown above do not include for the effects of mounting the fans within the AHU section(s). Please allow for the additional correction of 6db across the spectrum.



Unit Height including base 730mm

Unit Width 1140mm

Section A: Weight = 313Kgs

Components

- 1 Attenuator
- 2 Inlet
- 3 Water Heating Coil
- 4 Plenum

Section B: Weight = 236Kgs

Components

- 5 Panel Filter
- 6 Plug Fan

Section C: Weight = 219Kgs

Components

- 7 Water Heating Coil
- 8 Plenum

Section D: Weight = 290Kgs

Components

- 9 DX Cooling Coil
- 10 Plenum
- 11 Rigid Filter

Section E: Weight = 283Kgs

Components

- 12 Indirect Humidifier
- 13 Outlet

ELEVATION

M&Y Ventilation Equipment Limited

T: 0844 756 0202
 F: 0844 756 0203
 Email: sales@myventilation.co.uk
 Web: www.airhandlingunits.co.uk

Project : Royal Free Hospital

Unit reference : AHU 01 Supply

Number off : 1

Project ref : 10201-1-B

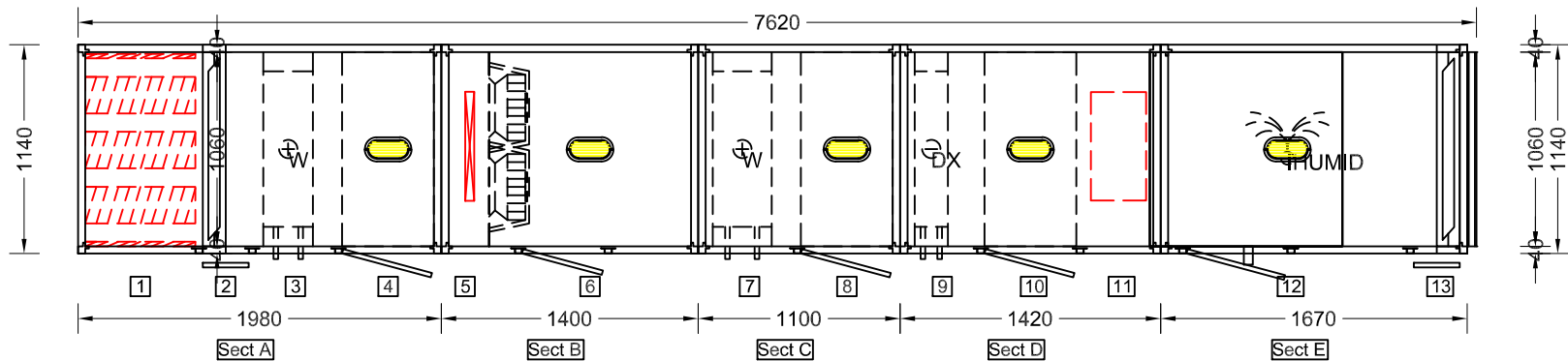
Unit number : 10201

Revision : B

Date : 22 Nov 2018

Title :

Not to scale



Unit Height including base 730mm

Unit Width 1140mm

Section A: Weight = 313Kgs

Components

- 1 Attenuator
- 2 Inlet
- 3 Water Heating Coil
- 4 Plenum

Section B: Weight = 236Kgs

Components

- 5 Panel Filter
- 6 Plug Fan

Section C: Weight = 219Kgs

Components

- 7 Water Heating Coil
- 8 Plenum

Section D: Weight = 290Kgs

Components

- 9 DX Cooling Coil
- 10 Plenum
- 11 Rigid Filter

Section E: Weight = 283Kgs

Components

- 12 Indirect Humidifier
- 13 Outlet

PLAN DECK

M&Y Ventilation Equipment Limited

T: 0844 756 0202
 F: 0844 756 0203
 Email: sales@myventilation.co.uk
 Web: www.airhandlingunits.co.uk

Project	: Royal Free Hospital	Project ref	: 10201-1-B	Date	: 22 Nov 2018
Unit reference	: AHU 01 Supply	Unit number	: 10201	Title	:
Number off	: 1	Revision	: B	Not to scale	

Project: Royal Free Hospital
Quotation Reference: Q10201
Date: 22 Nov 2018

Customer Unit Reference	AHU-2	Serving	AHU 2 Supply & Extract
Unit Reference	Q10201-02-2		
Model Reference	AD41250		

AHU Details

Design Supply Air Volume	0.8	m ³ /s
External Static Pressure	300	Pa
Unit Velocity	1.16	m/s
Design Extract Air Volume	1.2	m ³ /s
External Static Pressure	300	Pa
Unit Velocity	1.74	m/s

Energy Use

	Supply on Clean Filters	Extract on Clean Filters	Overall	
Specific Fan Power	0.86	1.18	1.76	kW/(m ³ /s)

AHU Construction

Framework	40 mm
Framework Coating	Anodized
Panel Depth	25 mm
External Panel Finish	GWG Plastisol 0.9mm
Internal Panel Finish	Galv Sheet 0.9mm
Panel Insulation	Mineral Wool 25mm

Construction

Unit Location	External
Weather Roof	MICA Duo Pitch Roof
Baseframe	100 x 50 PFC
Leakage Class	L3

Overall Unit Dimensions

Length	Width	Height	Weight (Per Unit)
8520 mm	1240 mm	1260 mm	1938 kg

Section Weights and Dimensions

Section No.	Length	Width	Height	Weight Approx +/-5%
A	2450 mm	1240 mm	630 mm	360 kg
B	1890 mm	1240 mm	630 mm	405 kg
C	2310 mm	1240 mm	630 mm	380 kg
D	1870 mm	1240 mm	630 mm	318 kg
E	1520 mm	1240 mm	630 mm	291 kg
F	1120 mm	1240 mm	630 mm	185 kg

Attenuator

Type	AHU Mounted		Construction	
Airway Velocity	3.79	m/sec	Splitter Thickness	200 mm
Air PD	8.00	Pa	Length of Splitter	600 mm
Air way	100.00	mm	Splitter Insulation	Mineral Wool
Size H X W	550.00x1160.00	mm	Splitter Face	Full Length - Standard

Accessories

We are unable to guarantee a resultant noise level within the space - Acoustic analysis to be carried out by others.

Inlet Section

Component	Damper		Construction	
Air Pressure Drop	1.00	Pa	Casing	Aluminium EN AW6060 T6
			Control	Extended Spindle

Accessories

Damper actuators to be provided and fitted by others.
 Traffolyte Component label

Heating Coil

			Construction	
Air On / Off	-5.00/5.0	°C/°C	Casing Material	Inox 304 1.5 mm
Duty	9.70	kW	Tube Material	CU
Water(Inlet)/(Outlet)	82.00/71.00	°C/°C	Fin Material	No Fins
Water PD	12.98	kPa	Connection Size	1 x 3/4"(F) / 1 x 3/4"(R)
Water Flow Rate	0.22	L/s		
Air Pressure Drop	12.00	Pa		

Project: Royal Free Hospital
Quotation Reference: Q10201
Date: 22 Nov 2018

Customer Unit Reference	AHU-2	Serving	AHU 2 Supply & Extract
Unit Reference	Q10201-02-2		
Model Reference	AD41250		

Accessories

Valve and actuator to be supplied and fitted by others
 Traffolyte Component label

Plenum Section

Length 500 mm
 Access Side Right

Accessories

Access Porthole Fitted
 Traffolyte label - Access
 Factory fitted IP44 Internal bulkhead light (60W) wired to an IP66 external switch
 Factory fitted viewport

Panel Filter

Panel Filter			Construction	
Clean PD	35	Pa	Grade	Coarse 70%(ISO16890)
Mean	93	Pa	Media	Card Frame-Cotton/Synthetic Media
Recommended dirty	150	Pa	Withdrawal	Side
			Size 1 / Qty	2 x 595 x 495 x 47 mm

Accessories

Access Porthole Fitted
 Factory fitted Dwyer Minihelic gauge (Range 0-250 Pa)
 Traffolyte Component label
 Factory fitted IP44 Internal bulkhead light (60W) wired to an IP66 external switch
 Factory fitted viewport

Supply Fan - Dual Fan (100%-100%)

Supply Fan - Dual Fan (100%-100%)			Construction	
Design Air Volume	0.8	m ³ /s	Impeller	Backward Curve
Total Fan Resistance	811	Pa	Internal Isolation	Rubber
Fan Speed	2695	r/min		
Frequency @ Design Speed	37.03	Hz		
Max Frequency	50.0	Hz		
Maximum Fan Speed	3640	r/min		
Efficiency	63.42	%		

Motor Data

Motor Data			Construction	
FLC	3.20	Amps	Type	EC
Total Input Power	1.02	kW		
Motor Power	2.50	kW		
Motor Speed	3640	r/min		
Electrical Supply	400/3/50.00			

Accessories

Access Porthole Fitted
 Fan Healthy Contacts (For integration in to the controls system)
 Removable wire mesh guard is fitted behind the fan access door.
 Factory fitted IP44 Internal bulkhead light (60W) wired to an IP66 external switch
 Factory fitted viewport
 Traffolyte Component label
 Motor details above are per fan (where multiple fans have been selected)
 Inlet Flexible Connection
 Factory Fitted Inlet Guard
 Backdraft Damper will be fitted to fan
 The EC fan will be wired to an externally mounted IP66 rated isolator and IP54 terminal box with integral speed potentiometer. Terminals for BMS connections.

Project: Royal Free Hospital
Quotation Reference: Q10201
Date: 22 Nov 2018

Customer Unit Reference	AHU-2	Serving	AHU 2 Supply & Extract
Unit Reference	Q10201-02-2		
Model Reference	AD41250		

Plenum Section

Length	500	mm
Access Side	Right	

Accessories

Access Porthole Fitted
 Traffolyte label - Access
 Factory fitted IP44 Internal bulkhead light (60W) wired to an IP66 external switch
 Factory fitted viewport

Heating Coil

Air On / Off	5.00/12.1	°C/°C
Duty	6.88	kW
Water(Inlet)/(Outlet)	14.00/10.80	°C/°C
Water PD	12.99	kPa
Water Flow Rate	0.57	L/s
Air Pressure Drop	83.00	Pa

Construction

Casing Material	Inox 304 1.5 mm
Tube Material	CU
Fin Material	CU-0.10
Connection Size	1 x 3/4"(F) / 1 x 3/4"(R)

Accessories

Run around coil selection compliant to ERP2018 (Ecodesign directive 1253/2014)
 Runaround coil pump and inter-connecting pipework designed, supplied and installed by others.
 Valve and actuator to be supplied and fitted by others
 Traffolyte Component label

Plenum Section

Length	500	mm
Access Side	Right	

Accessories

Access Porthole Fitted
 Traffolyte label - Access
 Factory fitted IP44 Internal bulkhead light (60W) wired to an IP66 external switch
 Factory fitted viewport

DX Cooling Coil

Air On (db/wb)	30.00/20.00	°C/°C
Air Off (db/wb)	18.0/16.1	°C/°C
Duty	11.63	kW
Refrigerant	R410a	
Refrigerant PD	10	kPa
Evaporating Temp	6.0	°C
Face Velocity	1.74	m/s
Air Pressure Drop	15.00	Pa

Construction

Casing Material	Stainless Steel 304
Tube Material	Copper
Fin Material	Copper/PreTinned
Connection Size	1 x 1 x 1,1/8"(F) / 1 x 1 x 1/2"(R)
Eliminators	not needed - Not Incl.
Drain Tray	4 S Steel Removable draintray

Accessories

Coil is selected for use as a Reverse Cycle Heat Pump (Initial selection only - design approval required)
 DX coil supplied with capped ends and a small nitrogen charge. All refrigeration components and works by others.
 Traffolyte Component label
 1 (One) Circuit DX R410A Cooling Coil
 Internal Volume: 3.8 litres
 Check to ensure Condensers selected match with the above DX Coil

Plenum Section

Length	500	mm
Access Side	Right	

Project: Royal Free Hospital
Quotation Reference: Q10201
Date: 22 Nov 2018

Customer Unit Reference	AHU-2	Serving	AHU 2 Supply & Extract
Unit Reference	Q10201-02-2		
Model Reference	AD41250		

Accessories

Access Porthole Fitted
 Traffolyte label - Access
 Factory fitted IP44 Internal bulkhead light (60W) wired to an IP66 external switch
 Factory fitted viewport

Bag Filter

		Pa	Construction	
Clean PD	44	Pa	Grade	ePM1 70%(ISO16890)
Mean	122	Pa	Media	25mm Galv Frame/Glass Fibre
Recommended dirty	200	Pa	Withdrawal	Side
			Size 1 / Qty	2 x 595 x 495 x 635 mm

Accessories

Access Porthole Fitted
 Factory fitted Dwyer Minihelic gauge (Range 0-500 Pa)
 Traffolyte Component label
 Factory fitted IP44 Internal bulkhead light (60W) wired to an IP66 external switch
 Factory fitted viewport

Indirect Humidifier

		kg/h	Construction	
Humidification Required	30.40	kg/h	Control	Proportional-MODbus
Duty	26.3	kW		

Drain Pan

		Construction	
Size	1160 mm	Material	Stainless Steel

Accessories

Access Porthole Fitted
 Distributor pipes will be factory fitted.
 Humidifier supplied loose for internal installation on site remote to the AHU by others.
 Weather-proof enclosure supplied with a factory fitted Humidifier - Installation on site remote to AHU by others.
 Humidifier supplied factory fitted to the side of the AHU.
 Humidifier supplied in a Weather-proof enclosure factory fitted to the side of the AHU.
 Manufacturers site attendance for commissioning of Humidifier (see additional costs)
 Traffolyte Component label
 Factory fitted IP44 Internal bulkhead light (60W) wired to an IP66 external switch
 Factory fitted viewport

Drain Tray		Type	Standard
		Width	1160 mm
		Material	Stainless Steel
		Connection Side	Right

Outlet Section

		Pa	Construction	
Component	Damper - Spigot		Casing	Aluminium EN AW6060 T6
Air Pressure Drop	1.00	Pa	Control	Manual

Accessories

Damper fitted with quadrant for manual adjustment (Air Balancing by others)
 Traffolyte Component label

Inlet Section

		Pa	Construction	
Component	Damper - Spigot		Casing	Aluminium EN AW6060 T6
Air Pressure Drop	1.00	Pa	Control	Manual

Accessories

Traffolyte Component label
 Damper fitted with quadrant for manual adjustment (Air Balancing by others)
 Factory fitted IP44 Internal bulkhead light (60W) wired to an IP66 external switch

Project: Royal Free Hospital
Quotation Reference: Q10201
Date: 22 Nov 2018

Customer Unit Reference	AHU-2	Serving	AHU 2 Supply & Extract	
Unit Reference	Q10201-02-2			
Model Reference	AD41250			
Panel Filter			Construction	
Clean PD	53	Pa	Grade	Coarse 70%(ISO16890)
Mean	101	Pa	Media	Card Frame-Cotton/Synthetic Media
Recommended dirty	150	Pa	Withdrawal	Front
			Size 1 / Qty	2 x 595 x 495 x 47 mm

Accessories

Access Porthole Fitted
 Factory fitted Dwyer Minihelic gauge (Range 0-250 Pa)
 Traffolyte Component label

Chilled Water Coil			Construction	
Air On (db/wb)	30.00/20.00	°C/°C	Casing Material	Inox 304 1.5 mm
Air Off (db/wb)	14.0/14.0	°C/°C	Tube Material	CU
Duty	25.88	kW	Fin Material	CU-0.10
Water(Inlet)/(Outlet)	10.80/14.00	°C/°C	Connection Size	1 x 1 1/2"(F) / 1 x 1 1/2"(R)
Water PD	25.31	kPa	Eliminators	Integrated into coil
Water Flow Rate	1.93	L/s	Drain Tray	Sloped 304 1.5
Face Velocity	2.84	m/s		
Air Pressure Drop	223.00	Pa		

Accessories

Run around coil selection compliant to ERP2018 (Ecodesign directive 1253/2014)
 Runaround coil pump and inter-connecting pipework designed, supplied and installed by others.
 Valve and actuator to be supplied and fitted by others
 Traffolyte Component label

Exhaust Fan - Dual Fan (100%-100%)			Construction	
Design Air Volume	1.2	m³/s	Impeller	Backward Curve
Total Fan Resistance	796	Pa	Internal Isolation	Rubber
Fan Speed	3198	r/min		
Frequency @ Design Speed	43.93	Hz		
Max Frequency	50.0	Hz		
Maximum Fan Speed	3640	r/min		
Efficiency	61.09	%		

Motor Data			Construction	
FLC	3.20	Amps	Type	EC
Total Input Power	1.56	kW		
Motor Power	2.50	kW		
Motor Speed	3640	r/min		
Electrical Supply	400/3/50.00			

Accessories

Access Porthole Fitted
 Fan Healthy Contacts (For integration in to the controls system)
 Removable wire mesh guard is fitted behind the fan access door.
 Factory fitted IP44 Internal bulkhead light (60W) wired to an IP66 external switch
 Factory fitted viewport
 Traffolyte Component label
 Motor details above are per fan (where multiple fans have been selected)
 Inlet Flexible Connection
 Factory Fitted Inlet Guard
 Backdraft Damper will be fitted to fan
 The EC fan will be wired to an externally mounted IP66 rated isolator and IP54 terminal box with integral speed potentiometer. Terminals for BMS connections.

Project: Royal Free Hospital
Quotation Reference: Q10201
Date: 22 Nov 2018

Customer Unit Reference	AHU-2	Serving	AHU 2 Supply & Extract
Unit Reference	Q10201-02-2		
Model Reference	AD41250		

Outlet Section	Construction		
Component	Damper - Powdercoated Louvre - EWB50	Casing	Aluminium EN AW6060 T6
Air Pressure Drop	30.00 Pa	Control	Extended Spindle

Accessories

Damper actuators to be provided and fitted by others.
 Traffolyte Component label

Project: Royal Free Hospital
Quotation Reference: Q10201
Date: 22 Nov 2018

Customer Unit Reference	AHU-2	Serving	AHU 2 Supply & Extract					
Unit Reference	Q10201-02-2							
Model Reference	AD41250							

AHU Acoustic Data:

Acoustic Data (Supply Fan Sound Power Level):

	63	125	250	500	1K	2K	4K	8K
Frequency(Hz)	63	125	250	500	1K	2K	4K	8K
Supply Fan Inlet Lw (dB):	67	66	73	73	70	70	66	62
Supply Fan Outlet Lw (dB):	69	69	77	77	80	78	74	70

Acoustic Data (Extract Fan Sound Power Level):

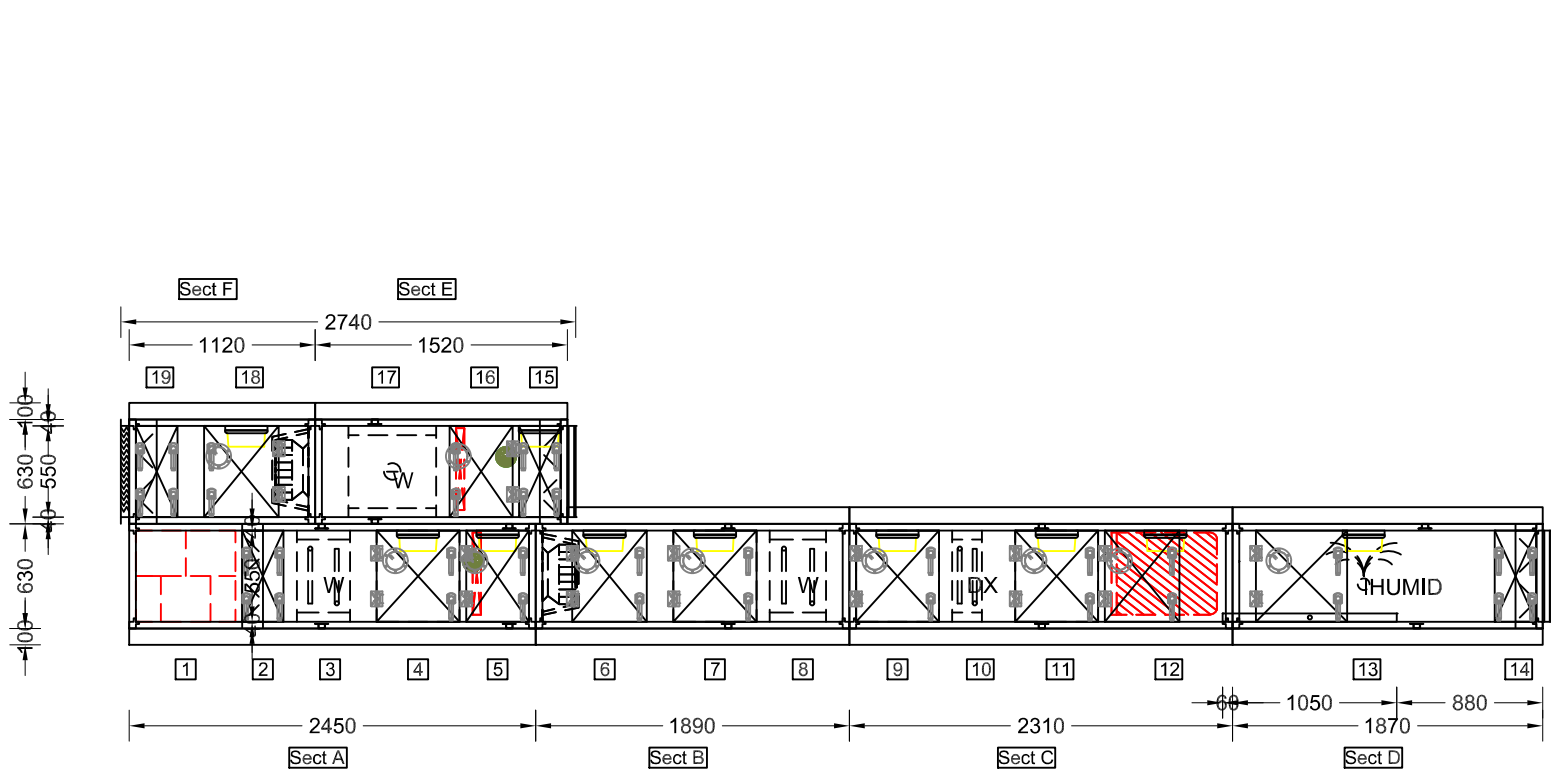
	63	125	250	500	1K	2K	4K	8K
Frequency(Hz)	63	125	250	500	1K	2K	4K	8K
Extract Fan Inlet Lw (dB)	73	71	77	81	76	75	72	68
Extract Fan Outlet Lw (dB)	74	73	81	84	86	84	79	76

Acoustic Data (Attenuator Insertion Loss - Supply):

	63	125	250	500	1K	2K	4K	8K
Frequency(Hz)	63	125	250	500	1K	2K	4K	8K
Static Insertion Loss (dB)	3	7	14	28	37	37	29	24

The In-duct Sound Power Level Spectra are in dB re-1pW.

The fan sound power levels shown above do not include for the effects of mounting the fans within the AHU section(s). Please allow for the additional correction of 6db across the spectrum.



Unit Height including base 1360mm

Unit Width 1240mm

Section A: Weight = 360Kgs
Components

- 1 Attenuator
- 2 Inlet
- 3 Water Heating Coil
- 4 Plenum
- 5 Panel Filter

Section B: Weight = 405Kgs
Components

- 6 Plug Fan
- 7 Plenum
- 8 Water Heating Coil

Section C: Weight = 380Kgs
Components

- 9 Plenum
- 10 DX Cooling Coil
- 11 Plenum
- 12 Bag Filter

Section D: Weight = 318Kgs
Components

- 13 Indirect Humidifier
- 14 Outlet

Section E: Weight = 291Kgs
Components

- 15 Inlet
- 16 Panel Filter
- 17 Water Cooling Coil

Section F: Weight = 185Kgs
Components

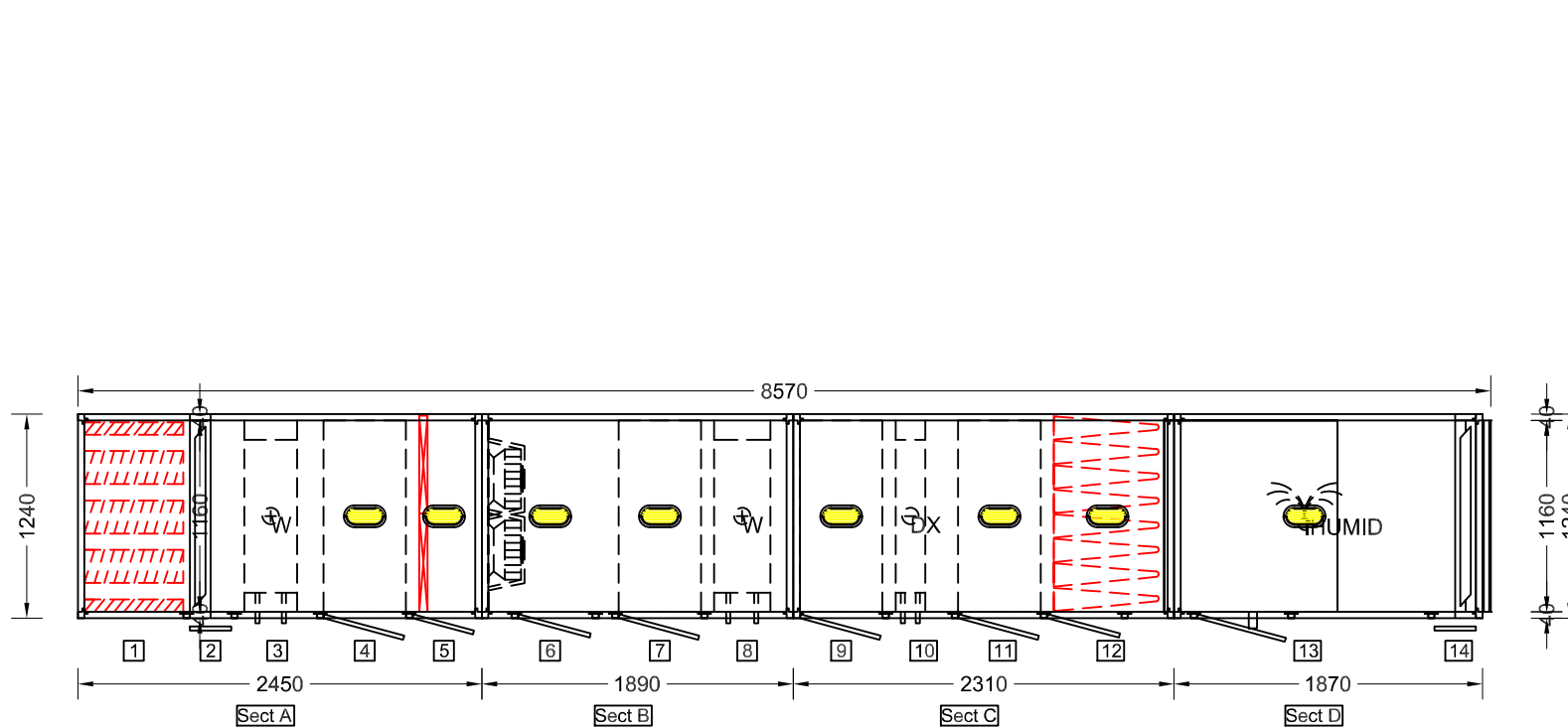
- 18 Plug Fan
- 19 Outlet

ELEVATION

M&Y Ventilation Equipment Limited

T: 0844 756 0202
F: 0844 756 0203
Email: sales@myventilation.co.uk
Web: www.airhandlingunits.co.uk

Project	: Royal Free Hospital	Project ref	: 10201-2-B	Date	: 22 Nov 2018
Unit reference	: AHU 2 Supply & Extract	Unit number	: 10201	Title	:
Number off	: 1	Revision	: B	Not to scale	



Unit Height including base 1360mm

Unit Width 1240mm

Section A: Weight = 360Kgs

Components

- 1 Attenuator
- 2 Inlet
- 3 Water Heating Coil
- 4 Plenum
- 5 Panel Filter

Section B: Weight = 405Kgs

Components

- 6 Plug Fan
- 7 Plenum
- 8 Water Heating Coil

Section C: Weight = 380Kgs

Components

- 9 Plenum
- 10 DX Cooling Coil
- 11 Plenum
- 12 Bag Filter

Section D: Weight = 318Kgs

Components

- 13 Indirect Humidifier
- 14 Outlet

Section E: Weight = 291Kgs

Components

- 15 Inlet
- 16 Panel Filter
- 17 Water Cooling Coil

Section F: Weight = 185Kgs

Components

- 18 Plug Fan
- 19 Outlet

PLAN LOWER DECK

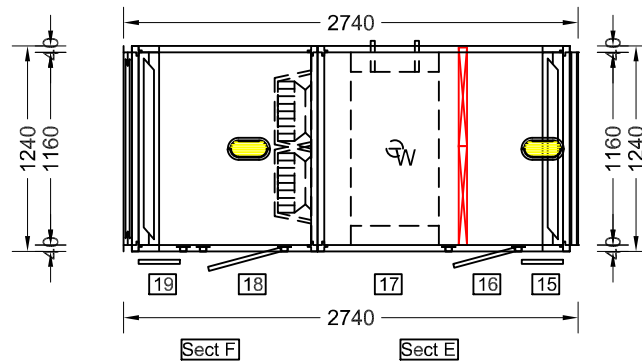
M&Y Ventilation Equipment Limited

T: 0844 756 0202
 F: 0844 756 0203
 Email: sales@myventilation.co.uk
 Web: www.airhandlingunits.co.uk

Project : Royal Free Hospital
 Unit reference : AHU 2 Supply & Extract
 Number off : 1

Project ref : 10201-2-B
 Unit number : 10201
 Revision : B

Date : 22 Nov 2018
 Title :
 Not to scale



Unit Height including base 1360mm

Unit Width 1240mm

Section A: Weight = 360Kgs

Components

- 1 Attenuator
- 2 Inlet
- 3 Water Heating Coil
- 4 Plenum
- 5 Panel Filter

Section B: Weight = 405Kgs

Components

- 6 Plug Fan
- 7 Plenum
- 8 Water Heating Coil

Section C: Weight = 380Kgs

Components

- 9 Plenum
- 10 DX Cooling Coil
- 11 Plenum
- 12 Bag Filter

Section D: Weight = 318Kgs

Components

- 13 Indirect Humidifier
- 14 Outlet

Section E: Weight = 291Kgs

Components

- 15 Inlet
- 16 Panel Filter
- 17 Water Cooling Coil

Section F: Weight = 185Kgs

Components

- 18 Plug Fan
- 19 Outlet

PLAN UPPER DECK

M&Y Ventilation Equipment Limited

T: 0844 756 0202
 F: 0844 756 0203
 Email: sales@myventilation.co.uk
 Web: www.airhandlingunits.co.uk

Project : Royal Free Hospital
 Unit reference : AHU 2 Supply & Extract
 Number off : 1

Project ref : 10201-2-B
 Unit number : 10201
 Revision : B

Date : 22 Nov 2018
 Title :
 Not to scale