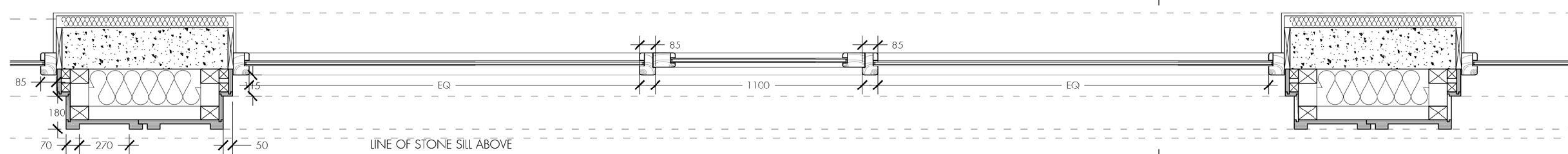


TYPICAL SHOP - ELEVATION
Scale 1:20

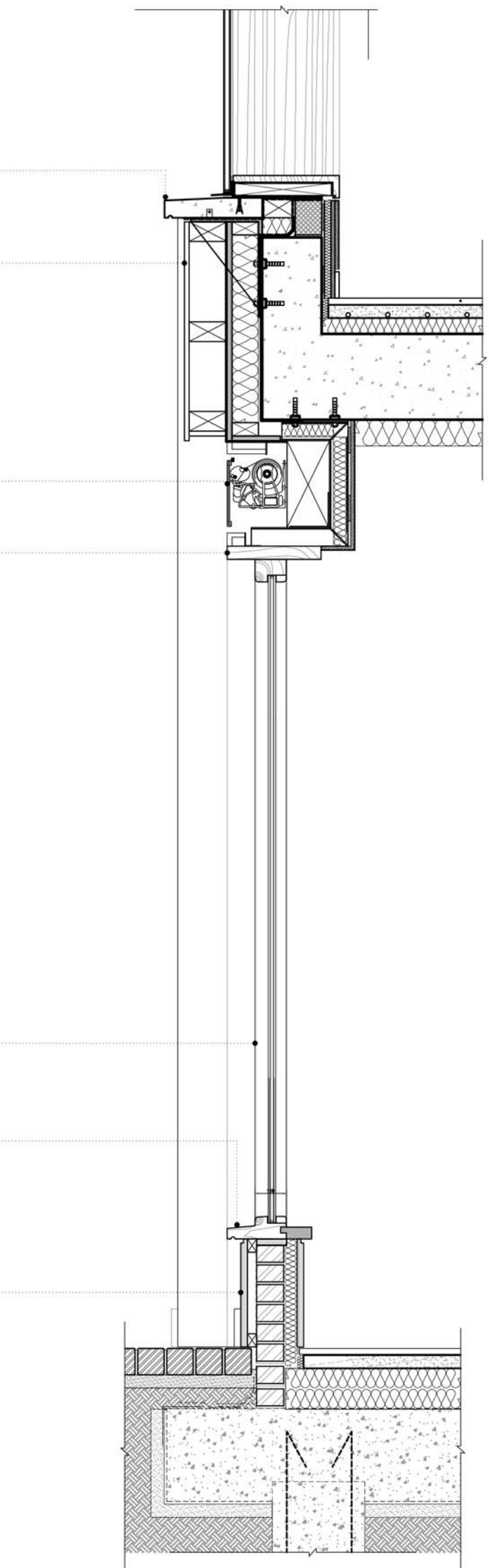


TYPICAL SHOP - PLAN
Scale 1:20

	Unit 1 Inchyra Blue No. 289		Unit 3 Sulking Room Pink No. 295		Unit 5 Sudbury Yellow No. 51		Unit 7 Stiffkey Blue No. 281
	Unit 2 Brinjal No. 222		Unit 4 Lichen No. 19		Unit 6 Mole's Breath No. 276		Unit 8 Eating Room Red No. 43

COLOUR SPECIFICATION
Farrow & Ball references

- PREFABRICATED STONE SILL WITH LIGHT GRIT BLAST FINISH BY EVANS. MIX REFERENCE: BLS185
- PAINTED MARINE PLY SIGNAGE FASCIA FIXED BACK TO R.C. SLAB EDGE
- SIGNAGE SUBJECT TO PLANNING APPLICATION BY TENANTS
- STREET NUMBER LOCATION
- 2mm ALUMINIUM FASCIA PLATE TO SHOP AWNING, PAINTED TO MATCH SURROUNDING TIMBER
- PAINTED TIMBER SHOP WINDOW SURROUND, TO BE PAINTED SAME COLOUR AS SIGNAGE FASCIA
- TIMBER LOUVRE ABOVE DOORS TO CONCEAL MECHANICAL AIR INTAKE/EXTRACT PAINTED TO MATCH SURROUNDING UNIT TIMBER. TO SPECIALIST DETAILS
- REBATED MARINE PLY 'PLASTER' DETAIL BETWEEN COMMERCIAL UNITS
- INWARD OPENING TIMBER SHOP DOOR WITH DOUBLE GLAZED SAFETY GLASS INSERT PANEL
- DOUBLE GLAZED SAFETY GLASS SHOP FRONT WINDOW. ALL GLAZING TO ACHIEVE A U VALUE OF 1.4W/M2
- TIMBER SILL DRIP DETAIL TO BASE OF GLAZING, PAINTED TO MATCH
- MARINE PLY STALL RISER AND SKIRTING BOARDS, PAINTED TO MATCH SURROUNDING TIMBER



SECTION AA
Scale 1:20

Do not scale off this drawing.
All indicated dimensions to be checked and verified on site by the Main Contractor before commencement of any fabrication drawings or work whatsoever on site.
Report all discrepancies to the Architect immediately.
This drawing is to be read in conjunction with all the related Architect's and Structural Engineer's drawings, details and all relevant information.

- NOTES**
1. MARINE PLY TO BE USED FOR SIGNAGE FASCIA, 'PLASTER', STALL RISERS AND SKIRTING BOARDS
 2. HARDWOOD JOINERY TO SHOPFRONT WINDOWS, ENTRANCE DOORS AND LOUVRES
 3. ALL TIMBER TO A COMMERCIAL UNIT PAINTED IN SAME COLOUR
 4. ALUMINIUM AWNING FASCIA PLATE TO BE PAINTED TO MATCH SURROUNDING TIMBER
 5. SIGNAGE LOCATION SHOWN INDICATIVELY, TENANTS TO SUBMIT FURTHER PLANNING APPLICATION
 6. STREET NUMBER LOCATED AT THE BOTTOM LEFT CORNER OF SIGNAGE FASCIA BOARD

rev.	rev. date	rev. description

tasou
associates architects + structural engineers

4 Arwell Street, London, EC1R 1UG T:020 7713 7070 F:020 7713 7071 E:tasou@tasou.co.uk		
project Swain's Lane London N6 6QX		
dwg title Proposed Shop Front Elevation and Details		
date Sept 2018	dwg no. SF-001	rev.
scale @ A1 1:20	job no. 1658	