

Dashed in shows possible bottom fixing for curtain wall verticals, details to be confirmed with manufacturer.

Bottom transom to be secured/raised above RC upstand so that its top exposed internal face is flush with floor finishes, shims or stainless steel support brackets to be used. Where shims are used an Bauder protective fleece layer is to be located under the shims.

Void under window bottom section is to be fully filled about supporting shims/etc. Kingspan K5 strips cut to fit and expanding foam to seal all remaining gaps.

Would resistant mastic seal over perimeter insulation strip, colour to match window frame.

8mm Insulation strip between screed and door frame, after screed is set, membrane is to be cut back and packed down to allow for sealant.

Floor finishes refer to Vabels schedule.
65mm Screed Flexidry or (similar approved) to be appropriate for use with under floor heating system.

Under floor heating pipe work to be installed in accordance with M&E specialist sub contractors drawings. Pipe size and depth to be coordinated with screed depth to ensure minimal coverage is achieved.

BASEMENT
68275
Isolation membrane laid over insulation and turned up @ perimeter.

115mm (65+50mm) Knauf Polyform Eco board Extra, layers to have staggered joins.

Delta corner strip to seal cavity tray to back edge of rc upstand.

BASEMENT SLAB
68050

MS-20 Delta Cavity Tray, to be sealed at perimeter all in accordance with manufacturers specifications with Delta corner strip.

200mm wide RC upstand, connected to main slab all in accordance with S.E.'s details.

Foamglass block to run full perimeter of light well to act as insulation to prevent cold bridge at RC upstand location.

Curtain wall style window shown Indicatively. To have U value 1.2W/m²K. To have manufacturers cill section connected in bottom transom to project and form drip over perimeter drainage channel.

Bottom curtain wall channel to also incorporate junction for securing DPM strip which is to lap over Bauder finishes behind drainage channel.

Hyload or Bauder DPM to be bonded to main tanking membrane dressed over upstand. Membrane to be laid prior to window fixings, all screw points are to receive mastic sealant. Membrane width to be sufficient to allow sheet to be turned back over fixings and to be sealed to back edge of window frame.

200mm Wide feature stone to run perimeter of light well immediately a adjacent to drainage channel, laid on mortar bed.

Mortar Bedding
Hyload DPC to be dressed up drainage channel and to lap DSE60 by min 275mm where mortar bed is required.

50mm Bauder Intensive Substrate
25mm Decorative aggregate type and colour to be in accordance with Landscape Architects details to cover earth mat, around raised planter.

Bauder Filter fleece to be laid under earth mat & to be secured around slot in drainage channel to prevent debris getting into storage zone.

Bauder DSE60 water storage and drainage Layer. When laid the dimpled are to be filled with Bauder mineral grain.

Bauder FSM600 Protection fleece

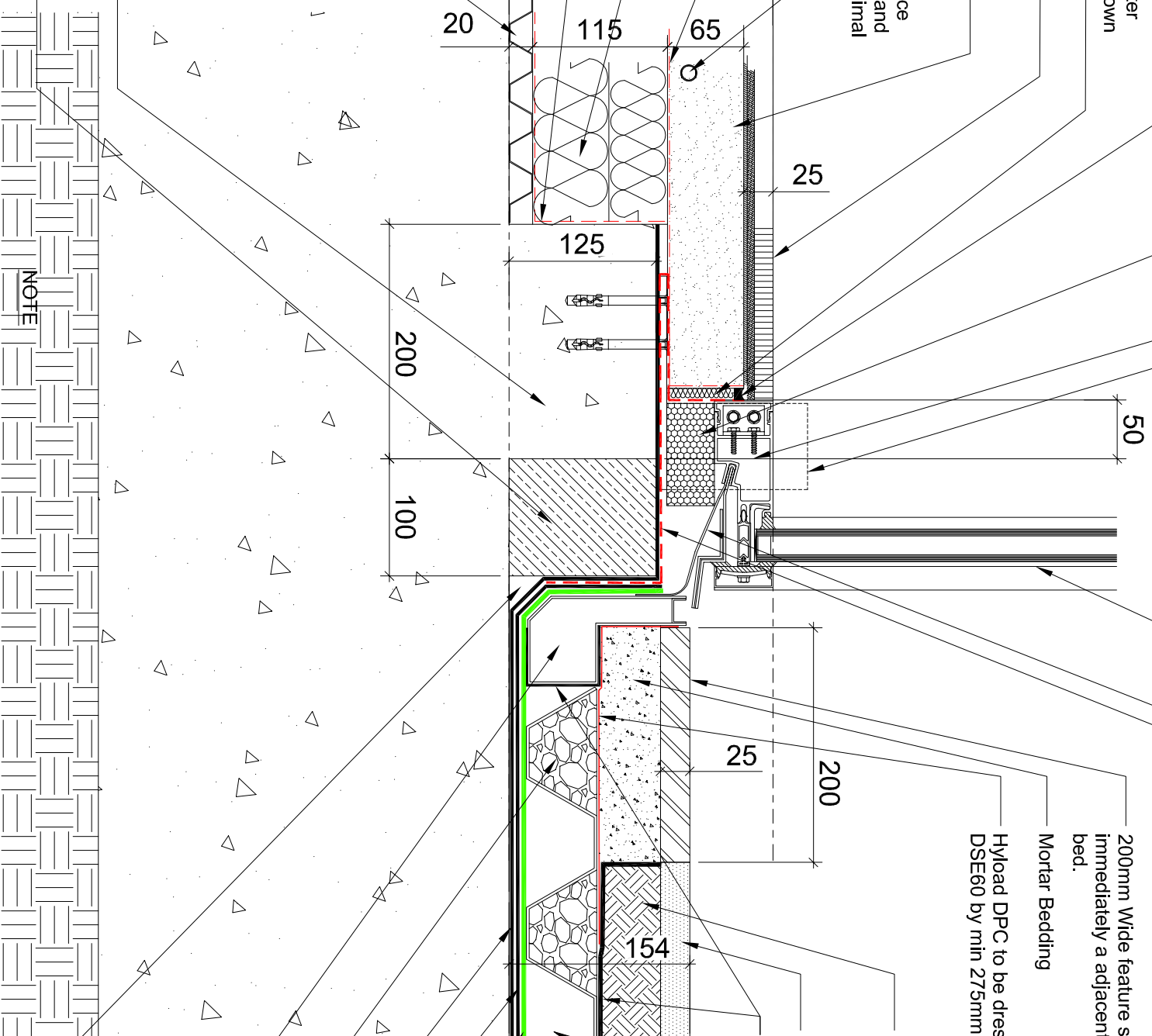
Bauder Root resilient capping sheet

Bauder Under layer to be dressed, to be turned up and over RC upstand

Bauder Mineral Grain to fill dimples in DSE60.

Made or Althon custom made stainless steel slot drain to perimeter of glazing, to suit depth of external finishes. With proprietary inspection points at corners and at end points. channel is to have slots drilled at regular centres to allow water to drain into DSE60 storage zone

Mortar fillet



NOTE

- INSTALLATION OF DELTA SYSTEM AND ASSOCIATED DRAINAGE PIPE WORK IS TO BE IN ACCORDANCE WITH BARKER & MORRIS SITE SPECIFIC DRAWING AND SPECIFICATIONS TO ENSURE WARRANTY IS PROVIDED.
- FOR VARYING SCREED DEPTHS PLEASE REFER TO DRAWING 1601-TFP-LG-B2-DR-A-6013-FloorFinishes

Do not scale from this drawing.

Contractors must confirm site dimensions before starting work on shop drawings.

Rev.	Description	Date	Auth.
CT	CONSTRUCTION ISSUE	23/09/2017	GSK

Purpose of Issue	TFP Job No.
CONSTRUCTION	4948

VABEL LONDON
LYNDHURST GARDENS
LONDON NW3
BASEMENT DETAIL
LIGHTWELL GLAZING CILL

Drawing Number	Scale	Sheet	Rev.
1601-TFP-LG-B2-DR-A-6006	1/5	S4	C1

Drawn: MRC/GSK
 Approved: [Signature]
 Date: 03 FEB 2017

The Todley & Foster Partnership
 ARCHITECTS • DESIGNERS
 Warwick House, 110 Parkerson Road
 Parkerson Road, London E9 6AD
 Tel: 020 8504 9771
 Fax: 020 8506 1779
 e-mail: architects@todleyfoster.com
 www.todleyfoster.com

© ALL RIGHTS RESERVED