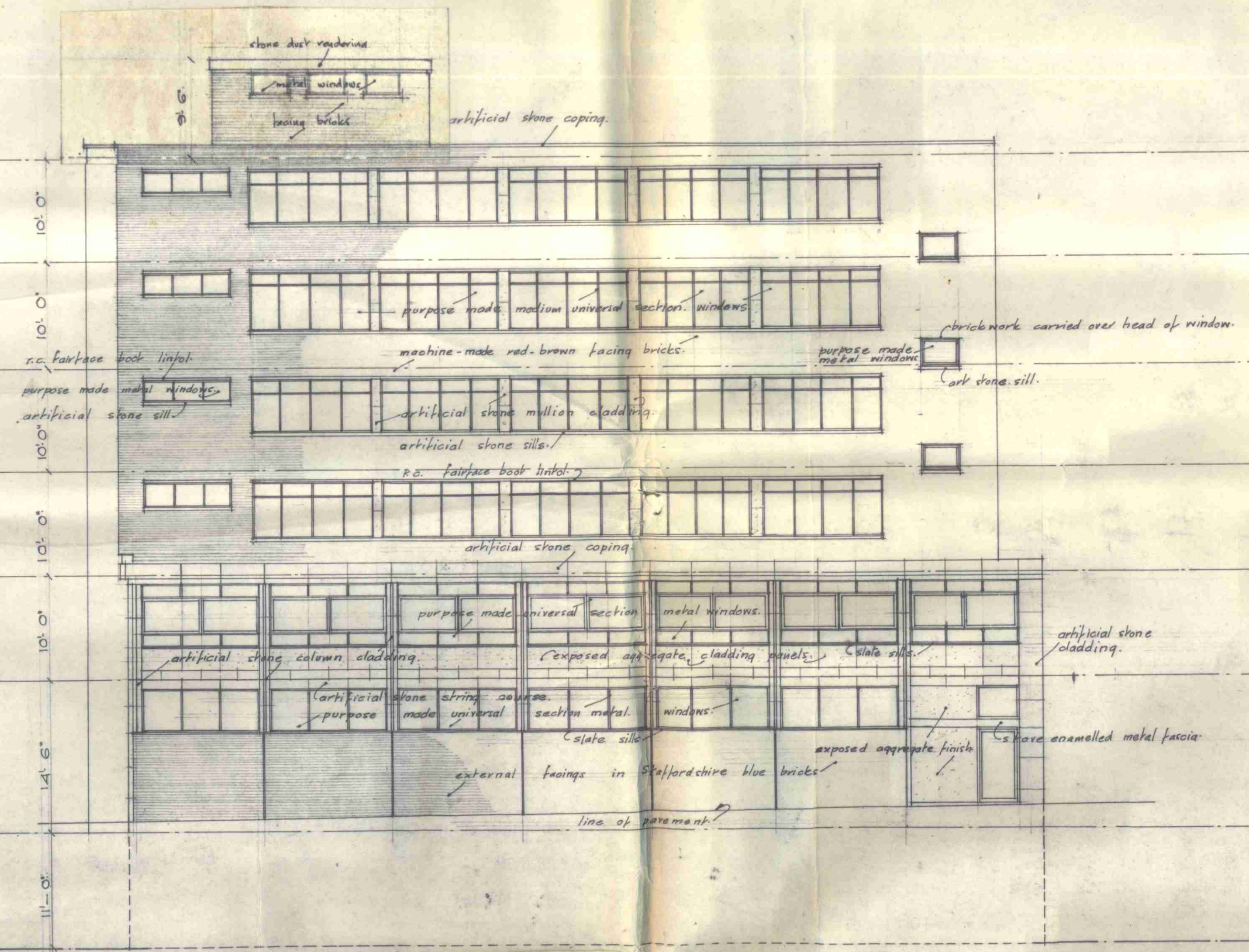
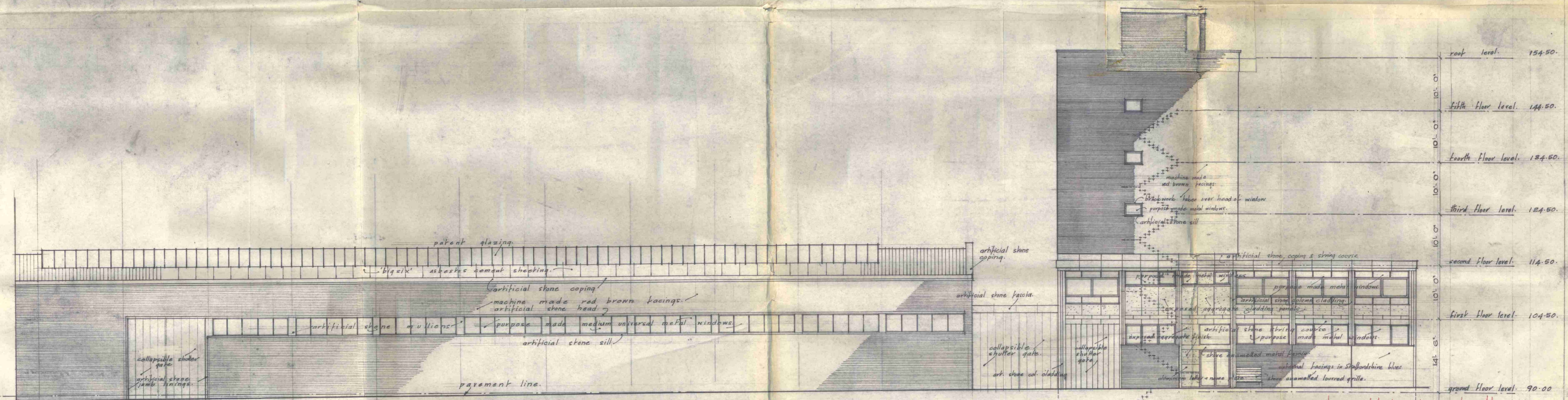


section a-a



elevation to Stanhope Street



elevation to William Road

overlays added reducing height
 & length of lift motor room & lavatory
 5th August 1958
 P. J. Stone
 P. J. Stone
 Architects

New Garage and Workshop Premises for Messrs. Maple & Co Ltd.
 Nos 17 to 37 William Road and 62-70 Stanhope Street. London. N.W.1.

General arrangement
 elevations.

dwg. n ^o	634/34.	Stone Toms & Partners.
scale:	1/8" = 1'0"	Architects.
date:	December 1958	28 South Audley Street
drawn by:	F.O.	Mayfair W.1.