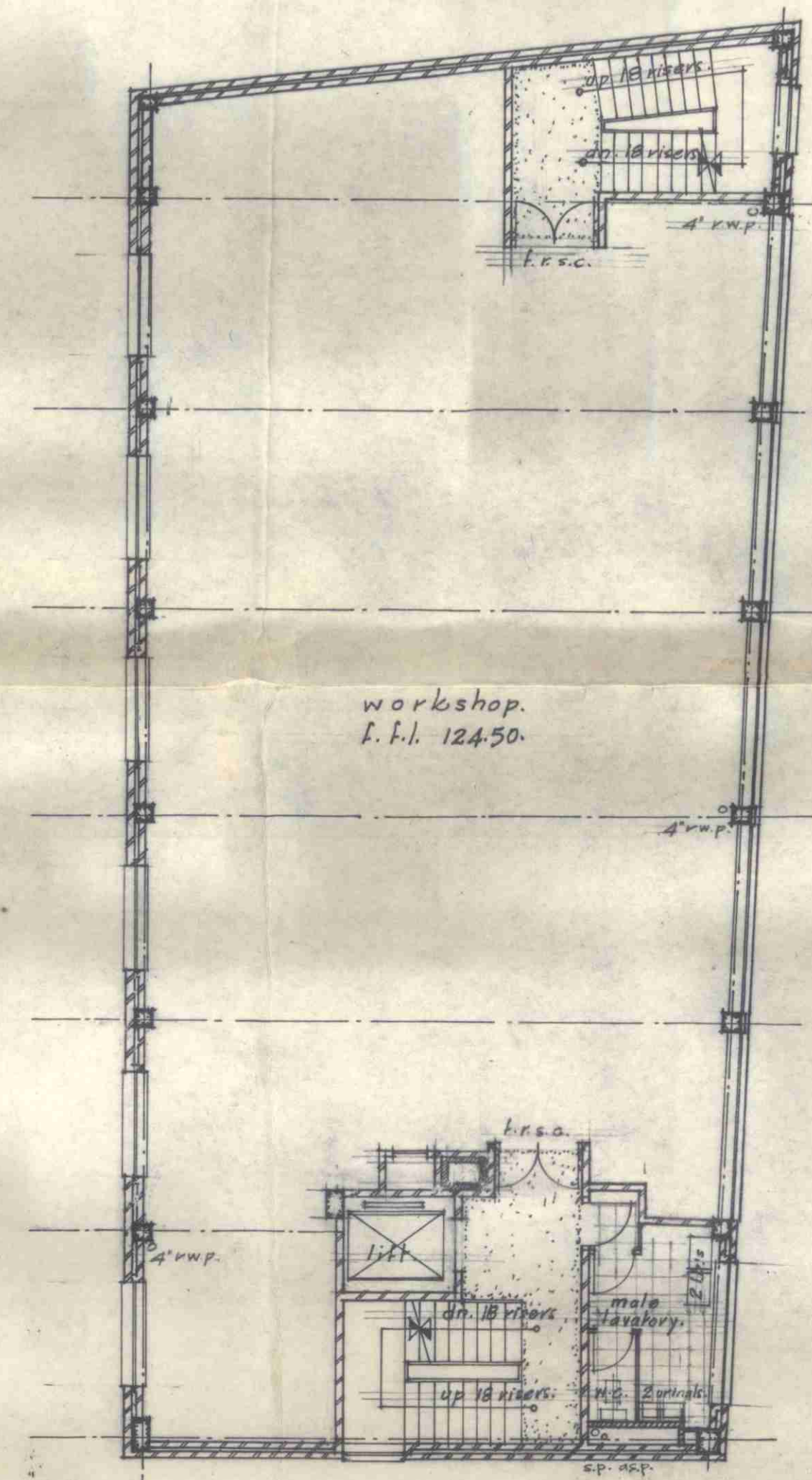
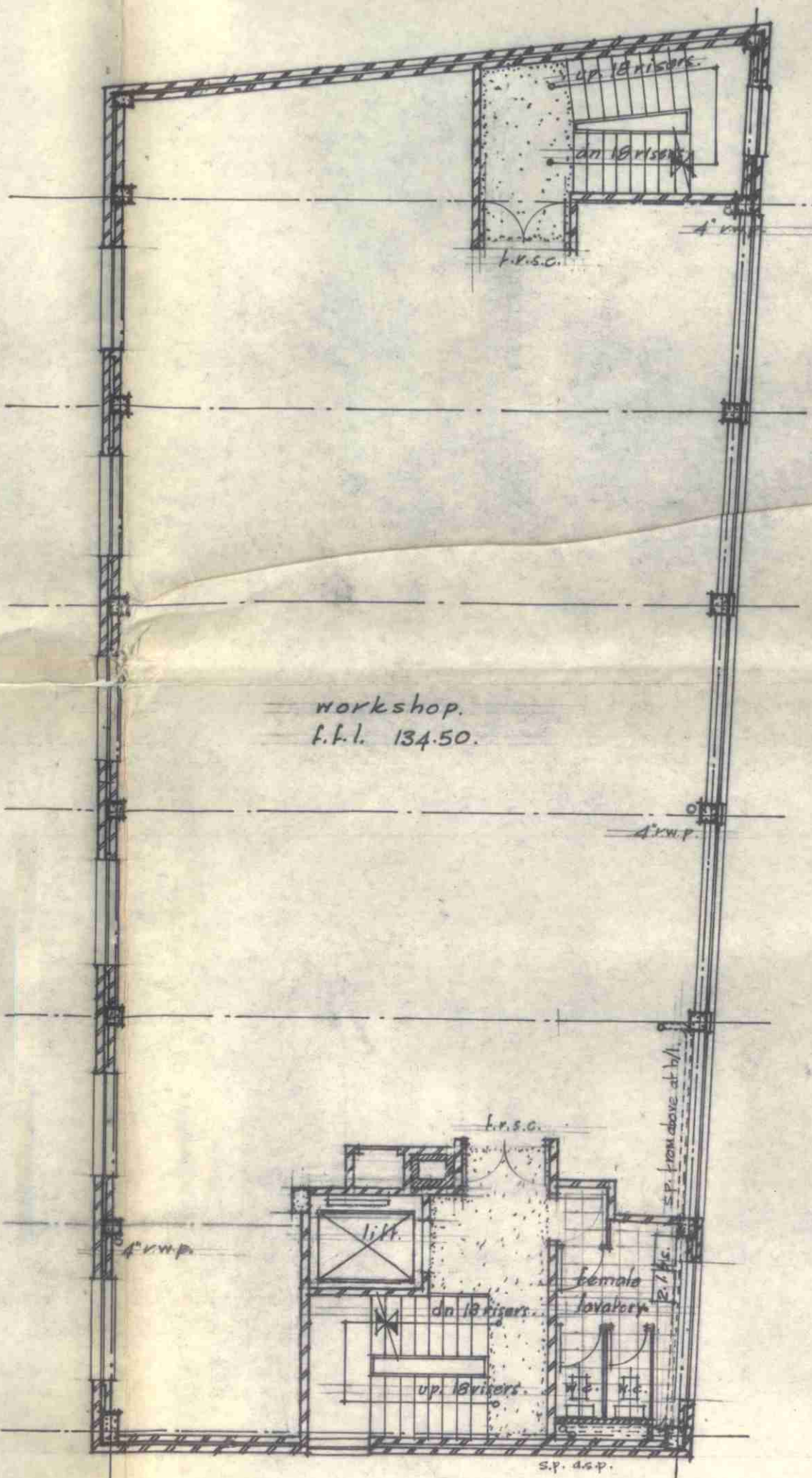


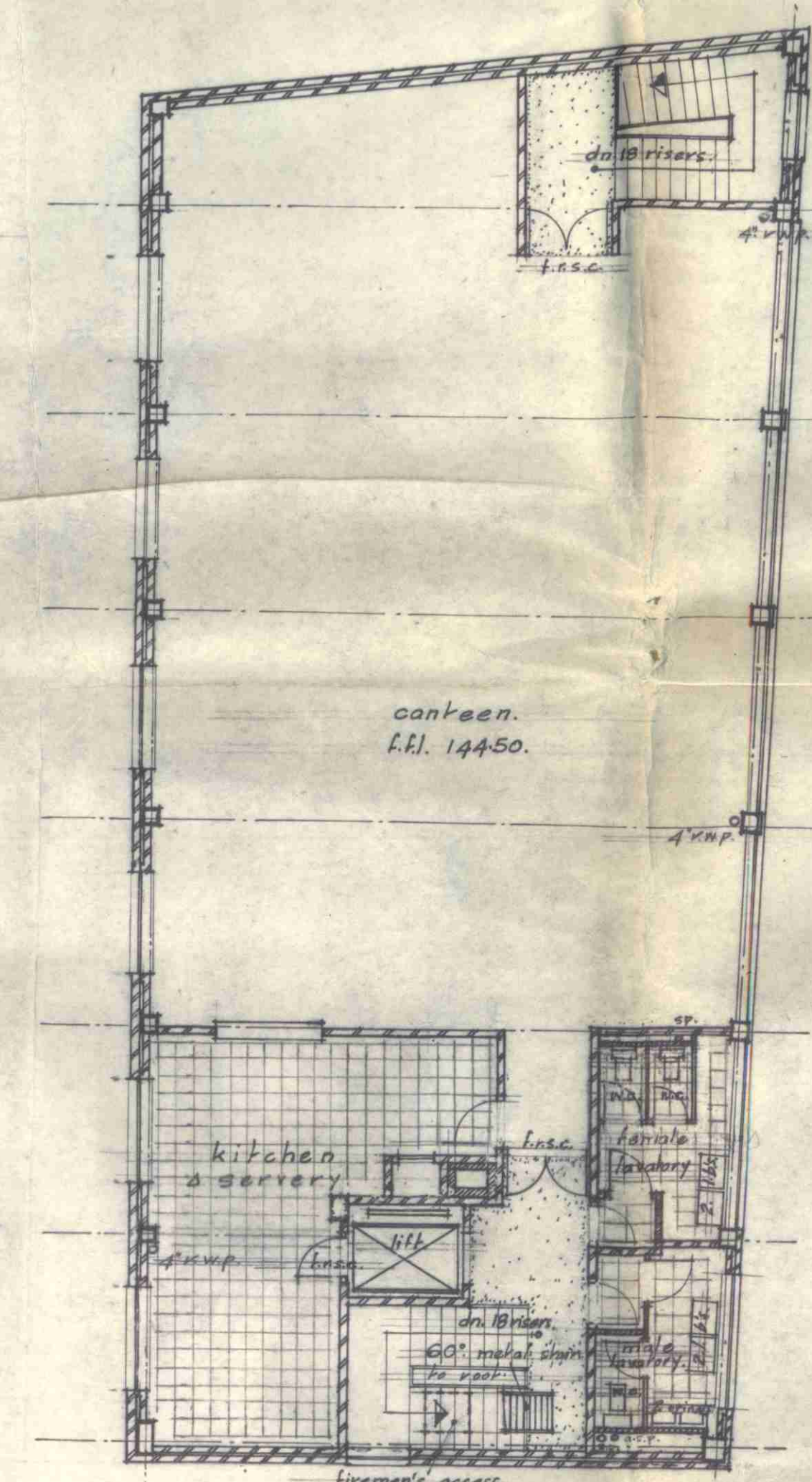
second floor.



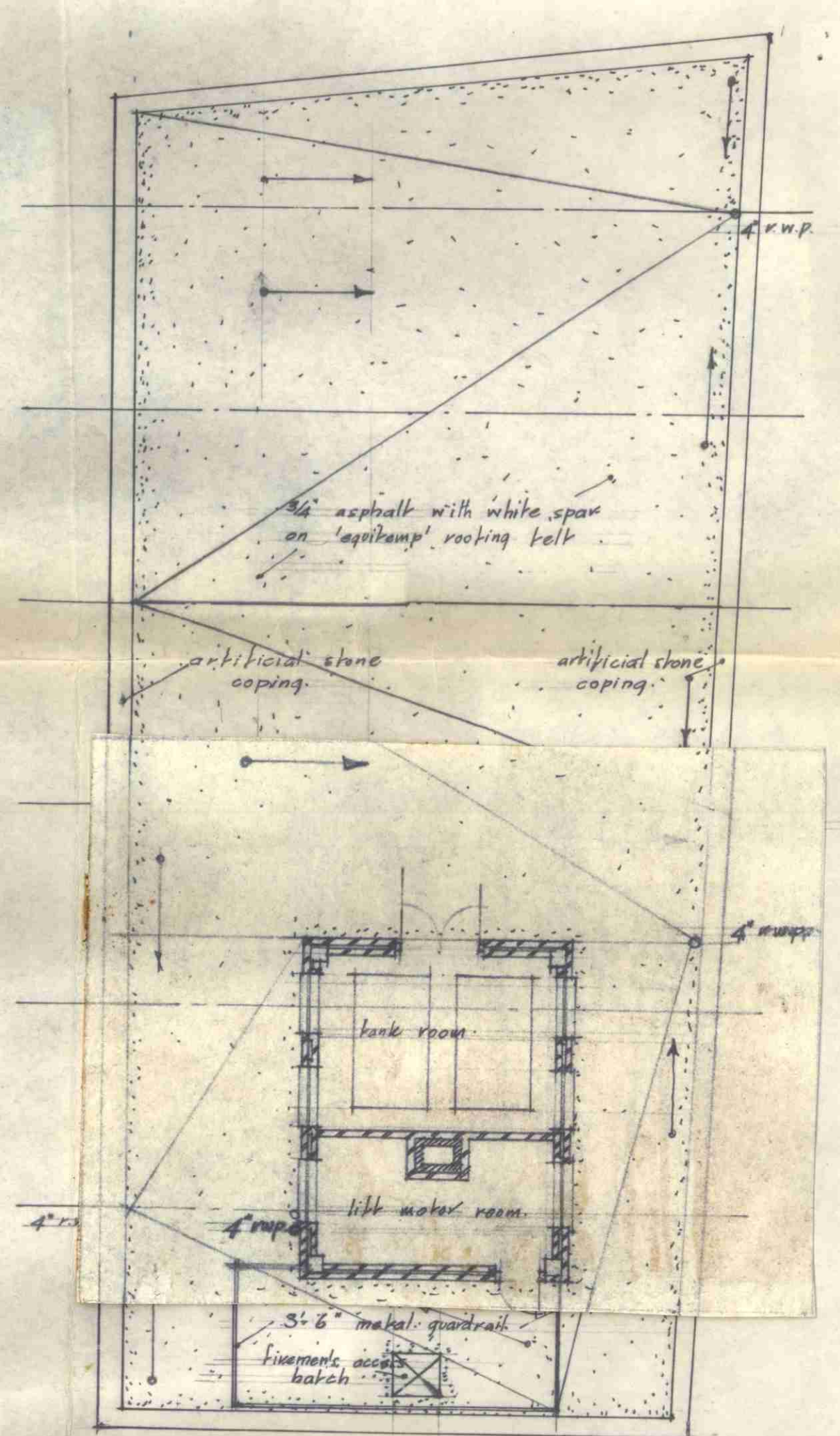
third floor.



fourth floor



fifth floor



roof.

overlays added reducing height +
width of lift motor room + tank room
5th August 1959
Pip Stone
Tours Paterson
Robert Oley
6 JUL 1959
7669

New Garage and Workshop Premises for Messrs. Maple & Co Ltd.
Nos 17 to 37 William Road and 62-70 Stanhope Street. London. N.W.1.

General arrangement.
second, third, fourth and fifth floors and roof plans.

dwg n°:	634/32.	Stone Toms & Partners.
scale:	1/8" = 1'-0"	Architects.
date:	December 1958.	28 South Audley Street.
drawn by:	F.O.	Mayfair.