

18-22 Haverstock Hill
London
Condition 16

Condition 16

Condition wording

Biodiversity Enhancements

Prior to implementation of the development a plan showing details of bird and bat boxes shall be submitted to and approved in writing by the local planning authority. The measures shall be installed in accordance with the approved plans prior to the occupation of the development and thereafter retained.

Reason: In order to secure appropriate features to conserve and enhance wildlife habitats and biodiversity measures within the development, in accordance with the requirements of the London Plan and Camden Local Plan policy A3.

Details submitted

This document has been prepared to support the plans and elevations submitted to discharge condition 16 of application 2018/2179/P.

This document contains detailed product information and sizes for each type of nest and box.

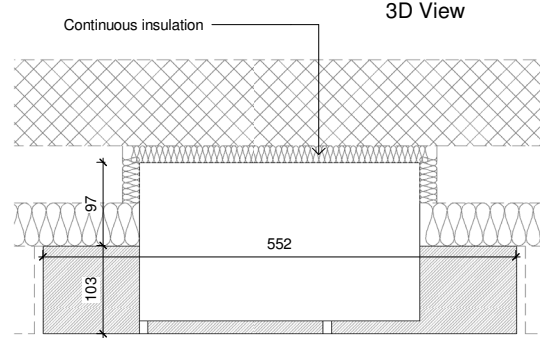
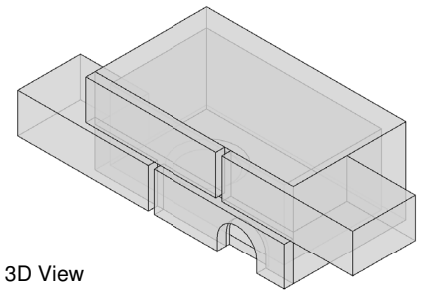
Please refer to the following drawing numbers for the location of the bird and bat nests:

AP_04_00_104 - Proposed Fourth Floor Plan
AP_NE_EL_142 - Proposed North East Elevation
AP_NE_EL_142 - Proposed South West Elevation
AP_SE_EL_143 - Proposed South East Elevation

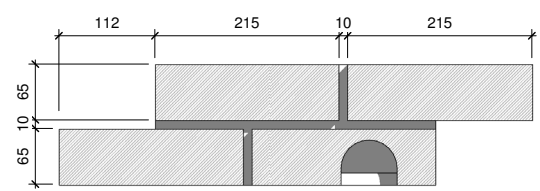
Proposals follow the recommendations stated in section 5 of the Greengage Preliminary Ecological Appraisal, April 2018 - Submitted and approved under Application ref: 2018/2179/P.

2 x 'Habibat' Swift Nest Box

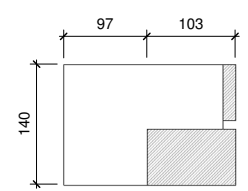
2 Number Swift nest boxes will be installed on the North East elevations as recommended by the Greengage Ecological Assessment section 5.9
 The boxes will be faced in brickwork to match the rest of the elevation.



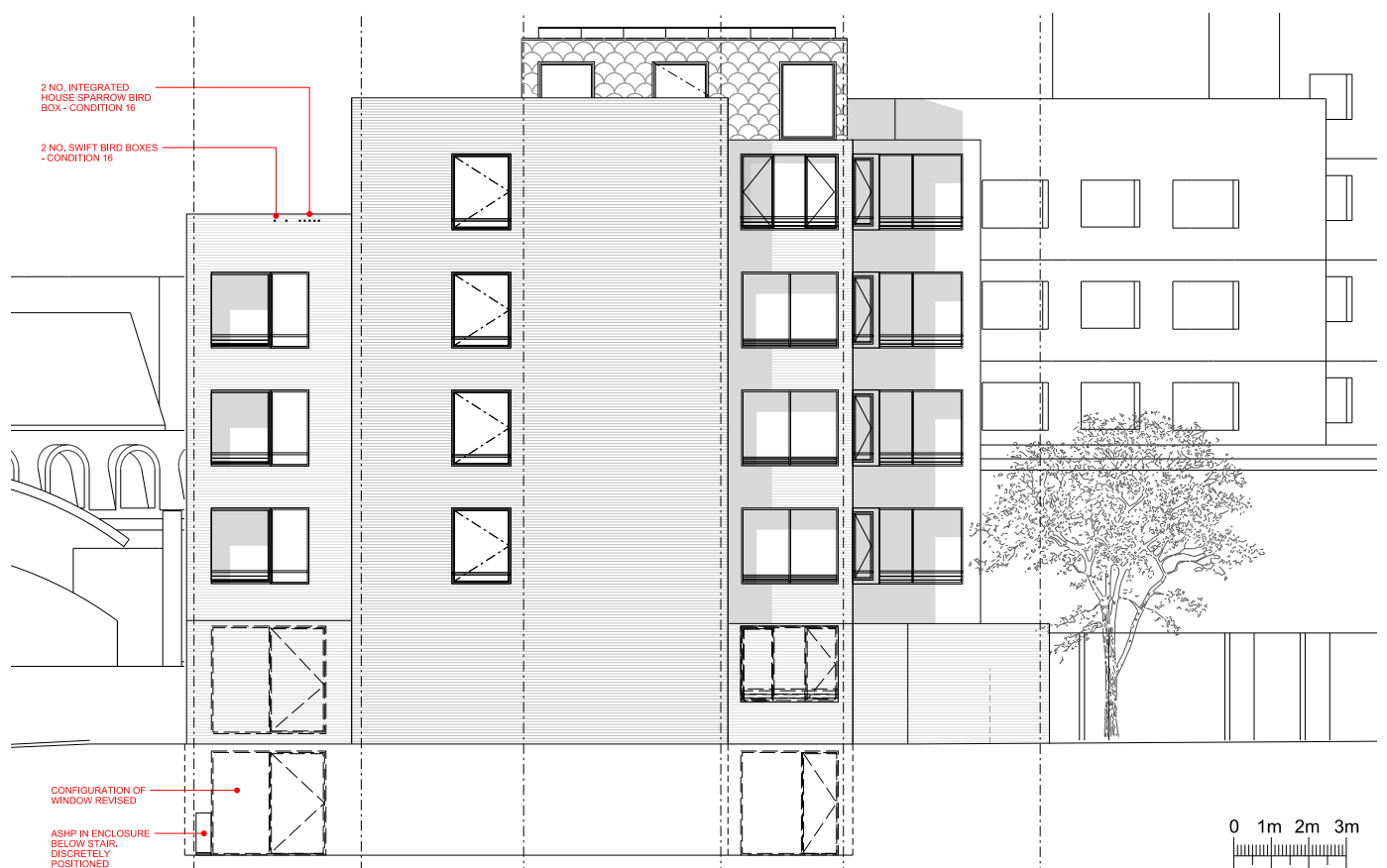
Plan View



Front Elevation



Side Elevation

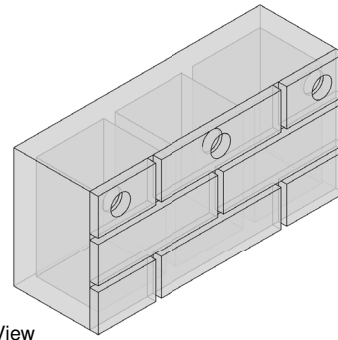


North East Elevation

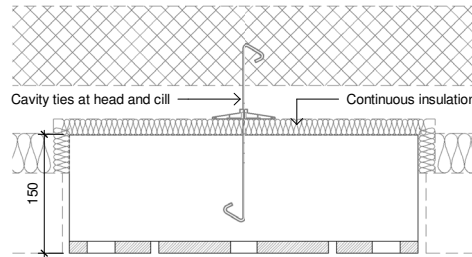


2 x 'Habibat' House Sparrow Box

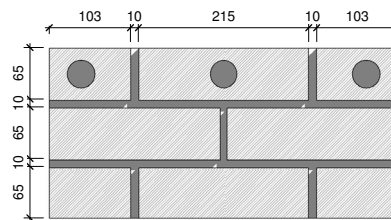
2 Number House Sparrow nest boxes will be installed on the North East elevation as recommended by the Greengage Ecological Assessment in section 5.9
The boxes will be faced in brickwork to match the rest of the elevation.



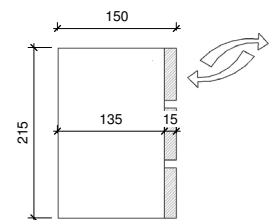
3D View



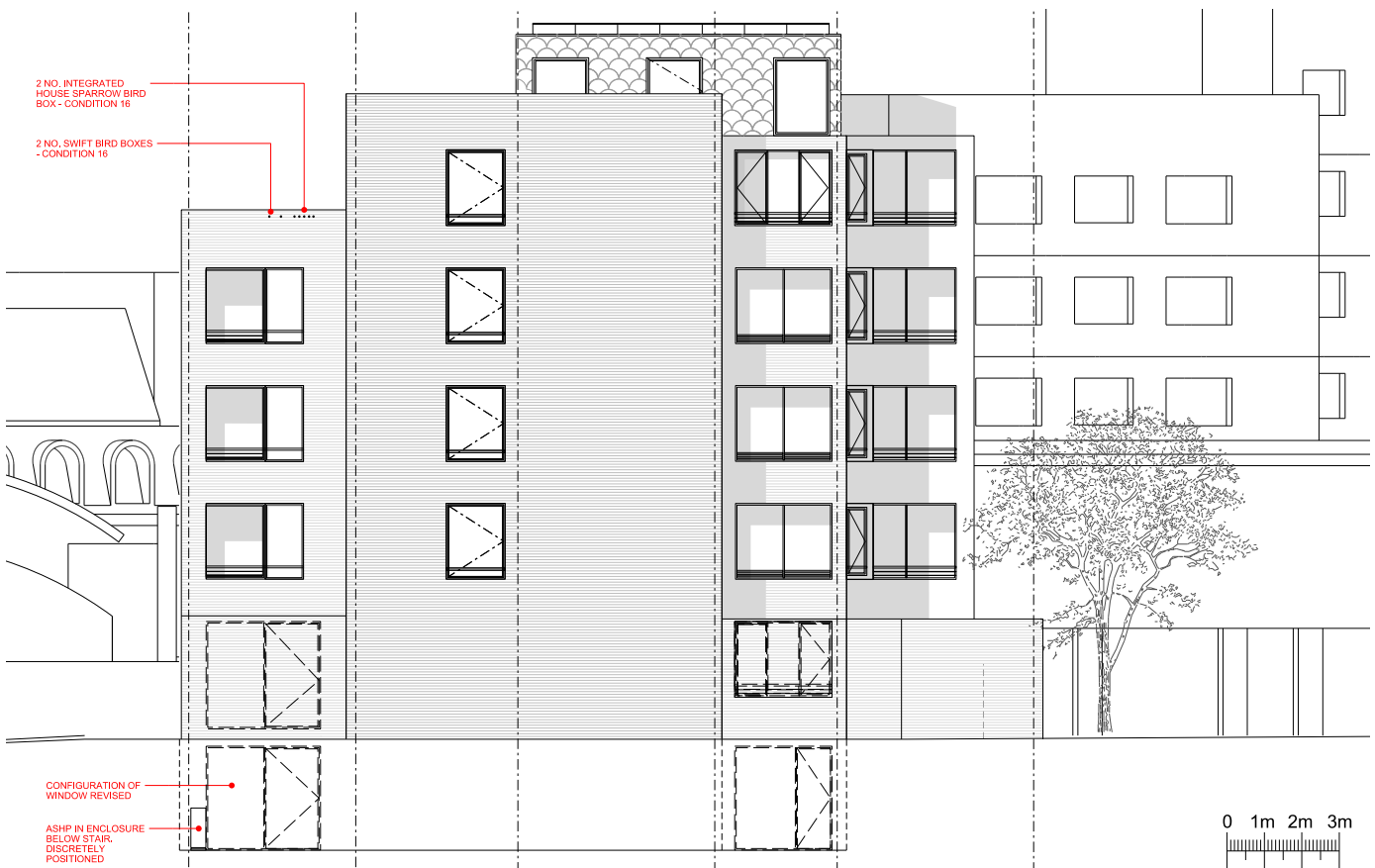
Plan View



Front Elevation



Side Elevation



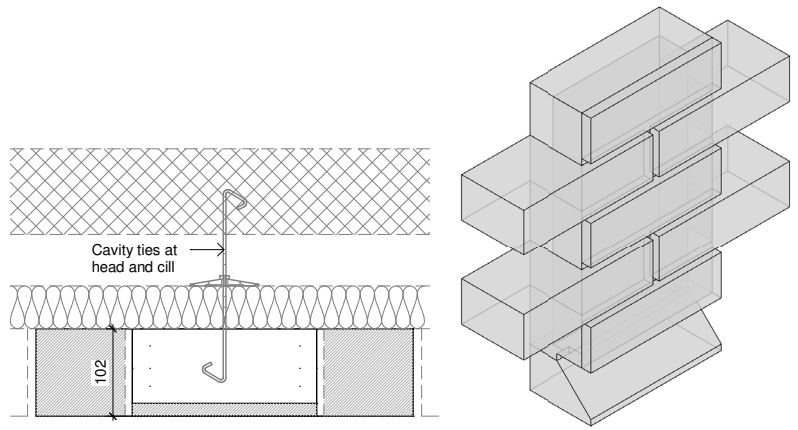
North East Elevation



4 x 'Habibat' Bat Boxes

4 Number Bat boxes will be installed on the South West elevation as recommended by the Greengage Ecological Assessment section 5.9.

The boxes will be faced in brickwork to match the rest of the elevation.

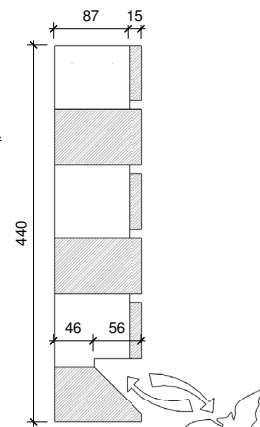


Plan View

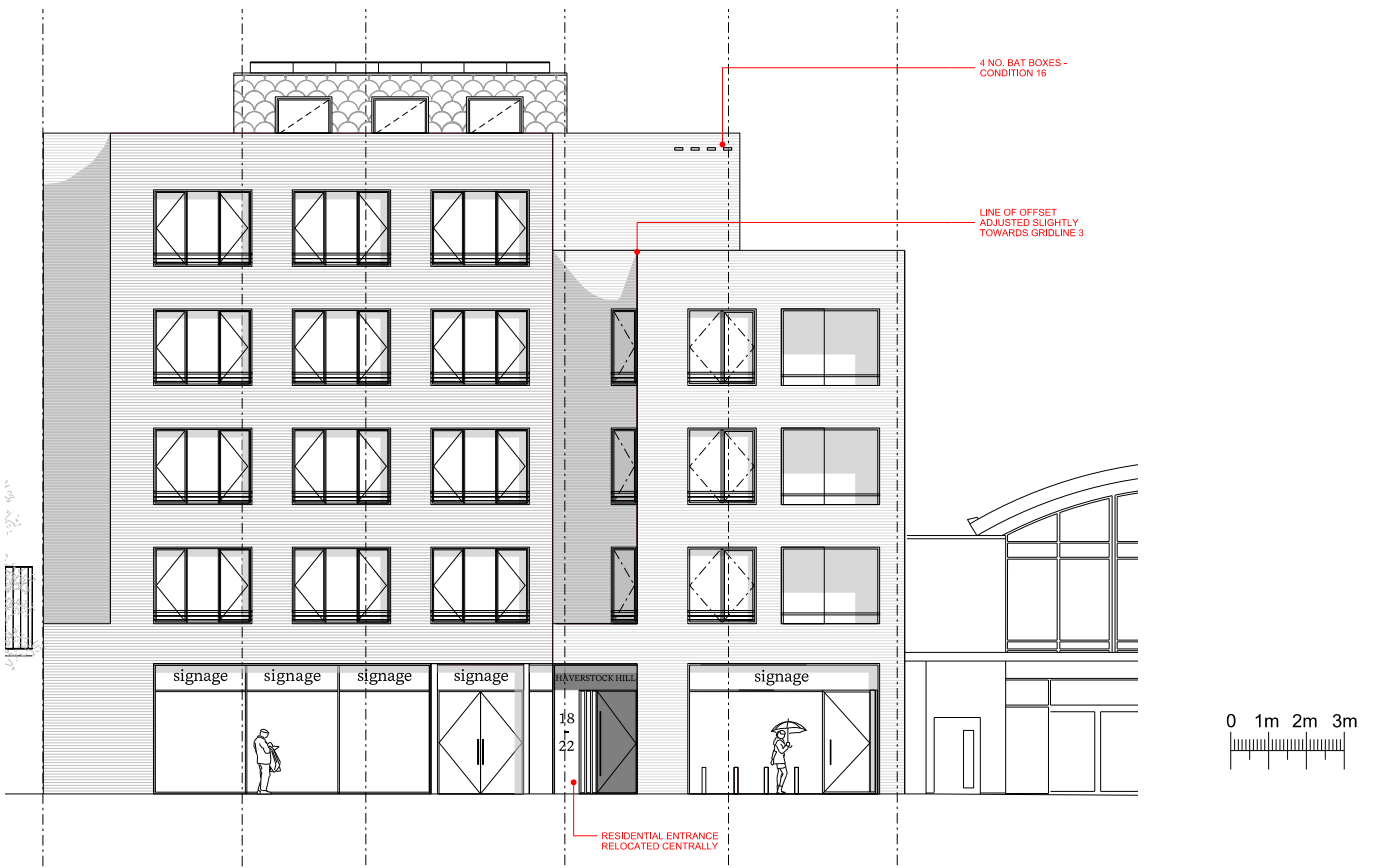
3D View



Front Elevation



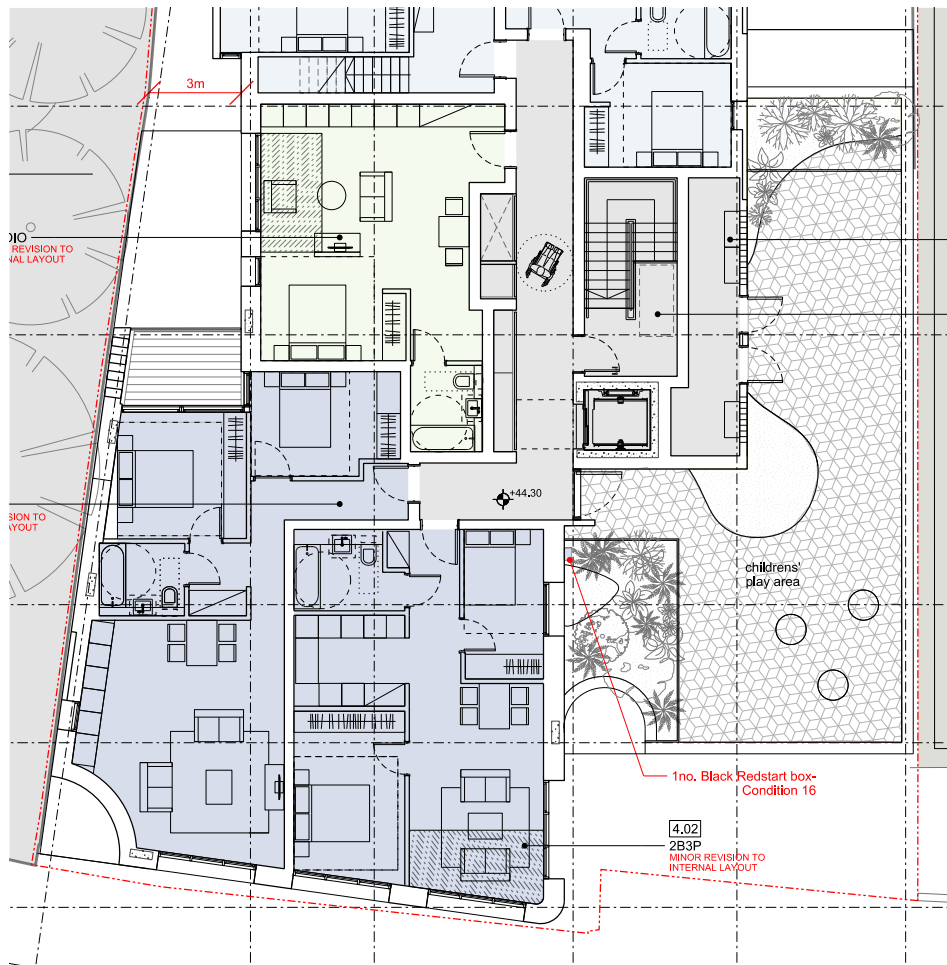
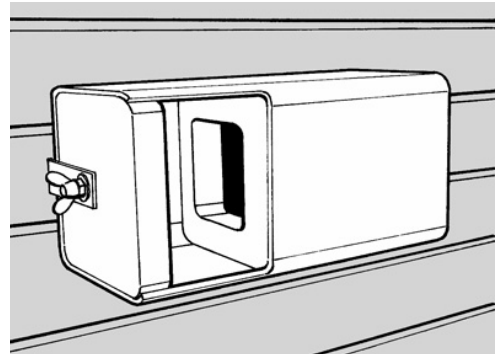
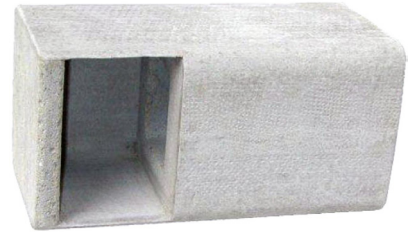
Side Elevation



South West Elevation Extract

1 x 'Schwegler' Black Redstart Box

1 Number Black Redstart nest box will be installed on the 4th Floor Green Roof area. The box will be surface mounted using discrete brackets.



Fourth Floor Roof Plan

VABEL

LONDON