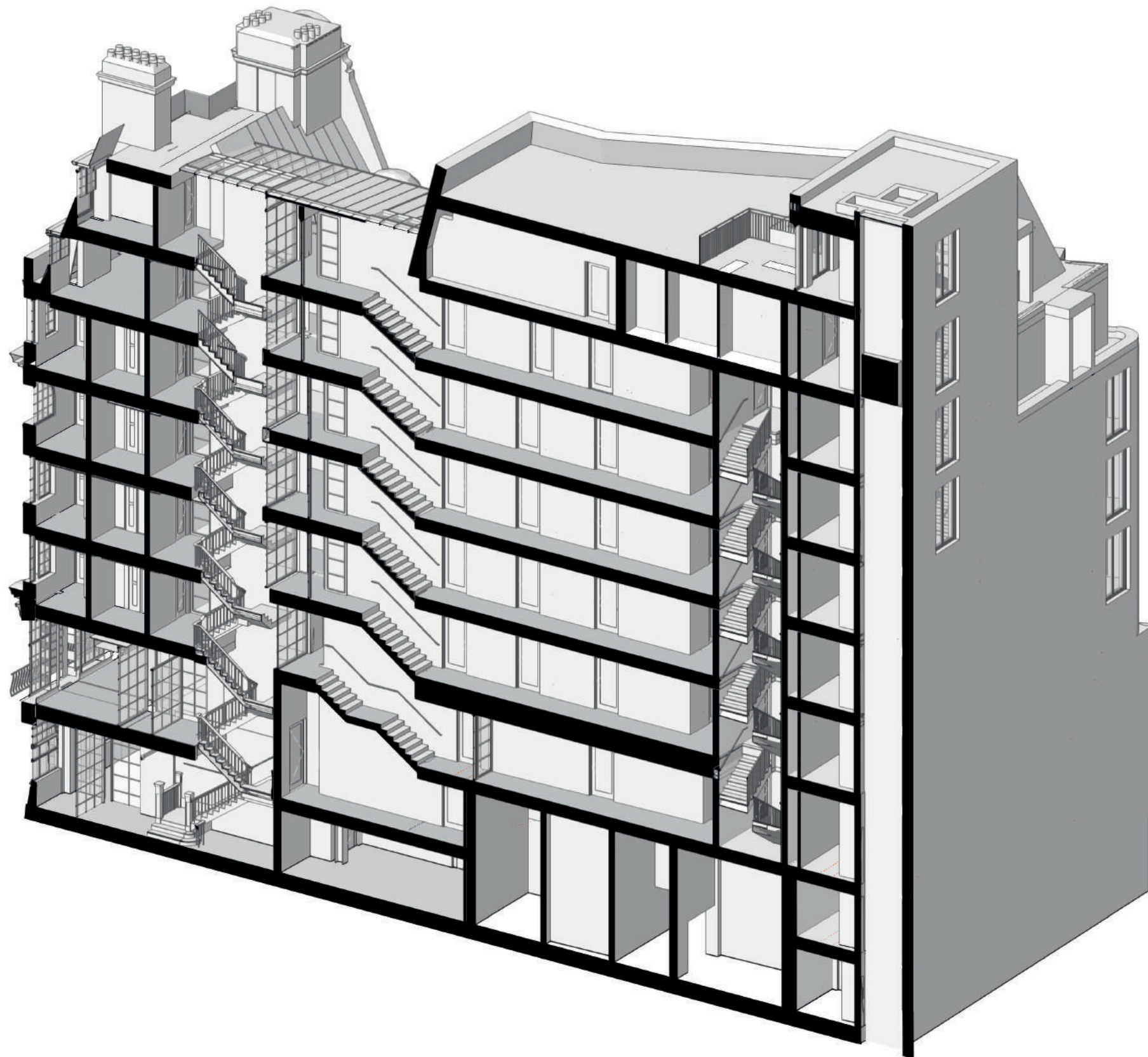


7.3 HERITAGE CONNECTION



CGI showing new glazed link at 6th & 7th floor. The mansard roof shape reveals the maximum possible area of the existing 'catslide' roof and mediates between old and new.

7.4 SECTIONAL RELATIONSHIP

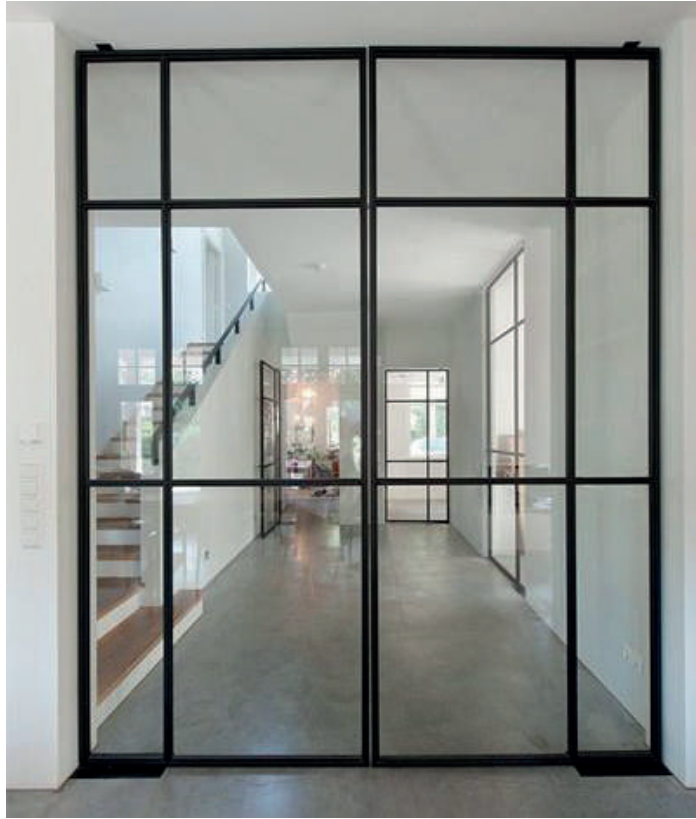


This axonometric section illustrates the significance of visual links created from the hotel corridors into the grand central staircase. The central staircase has been extended to the upper 2 floors in a contemporary fashion.

The link roof mediates between the existing 'catslide' roof and the stepped mansard of the new hotel building.

The secondary hotel stair sits on top of the existing TfL headhouse.

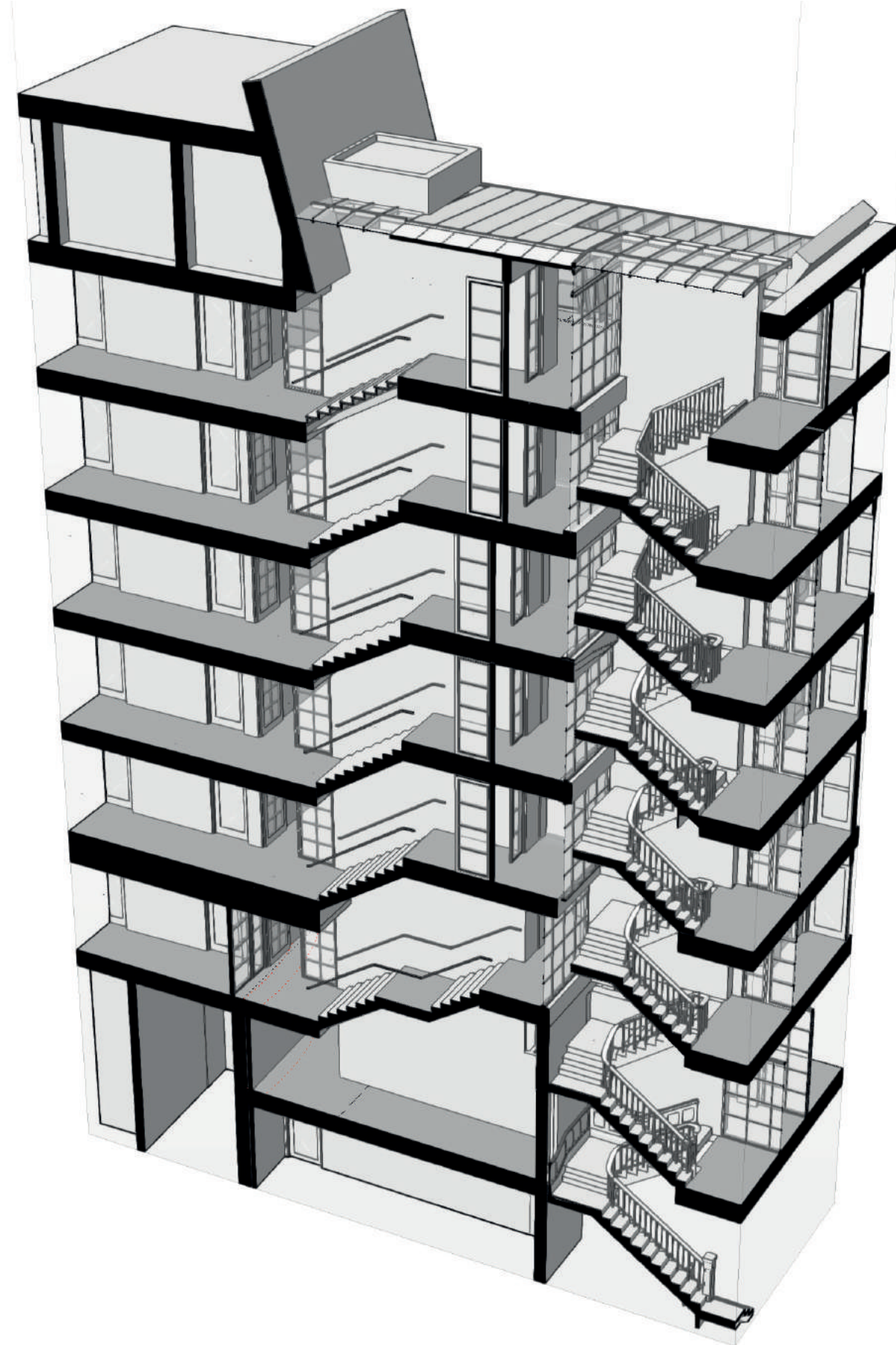
7.4 SECTIONAL RELATIONSHIP STAIRCASE



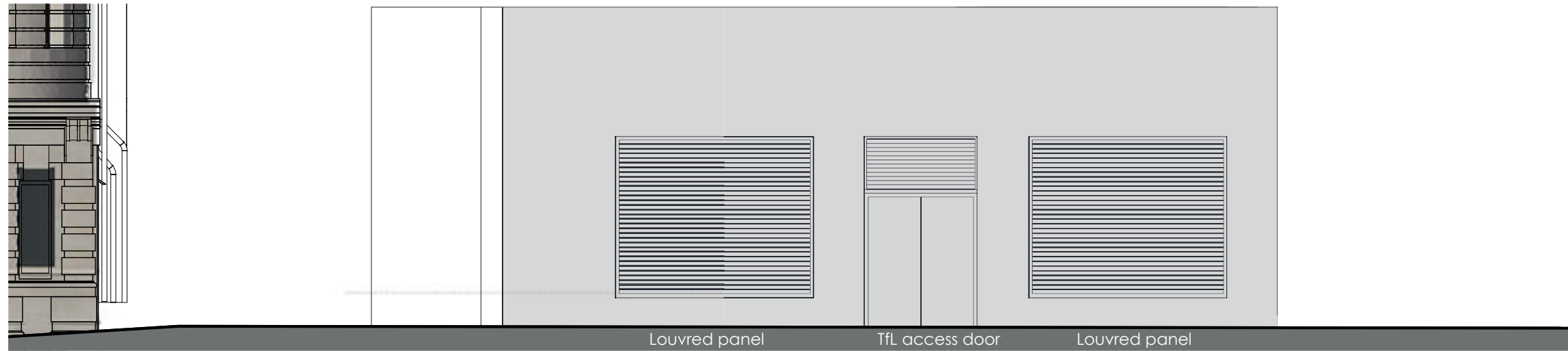
Glazed screen - precedent image



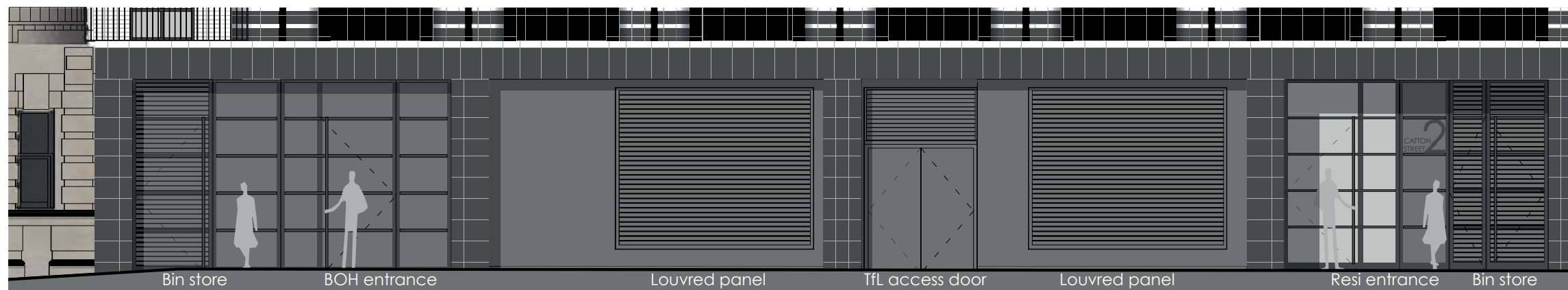
Contemporary stair and simple balustrade - precedent image



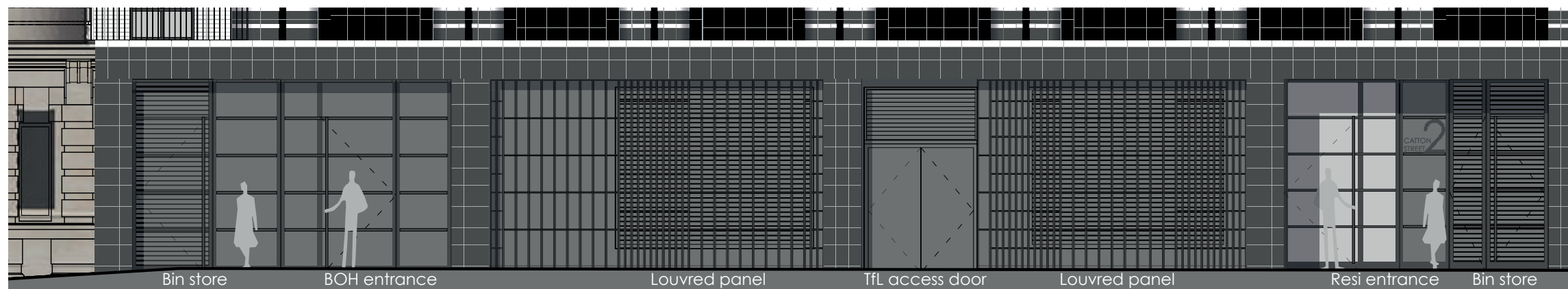
7.5 HEADHOUSE OVERCLAD & ENTRANCE



TfL headhouse as existing with temporary metal cladding removed.



TfL headhouse overbuild leaving existing louvres and access doors in place

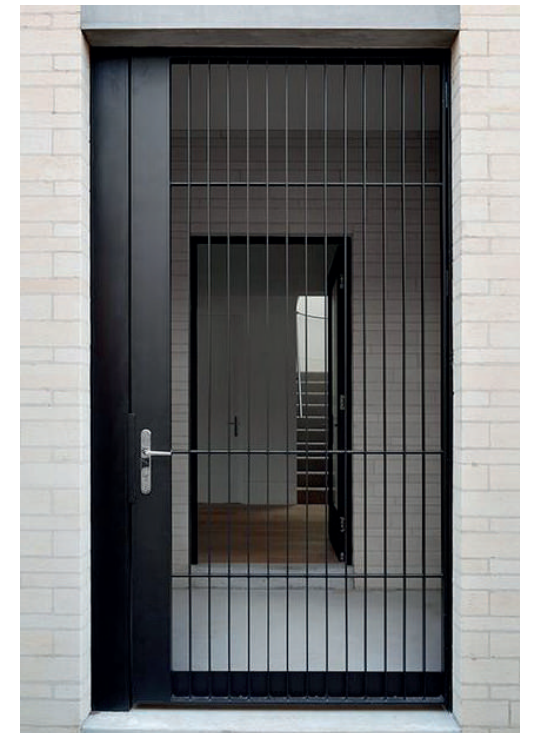


TfL headhouse overbuild leaving existing louvres and access doors in place

7.5 HEADHOUSE OVERCLAD & ENTRANCE



Recessed glazed residential entrance to Catton Street with adjacent louvered bin store screen.



Precedent image

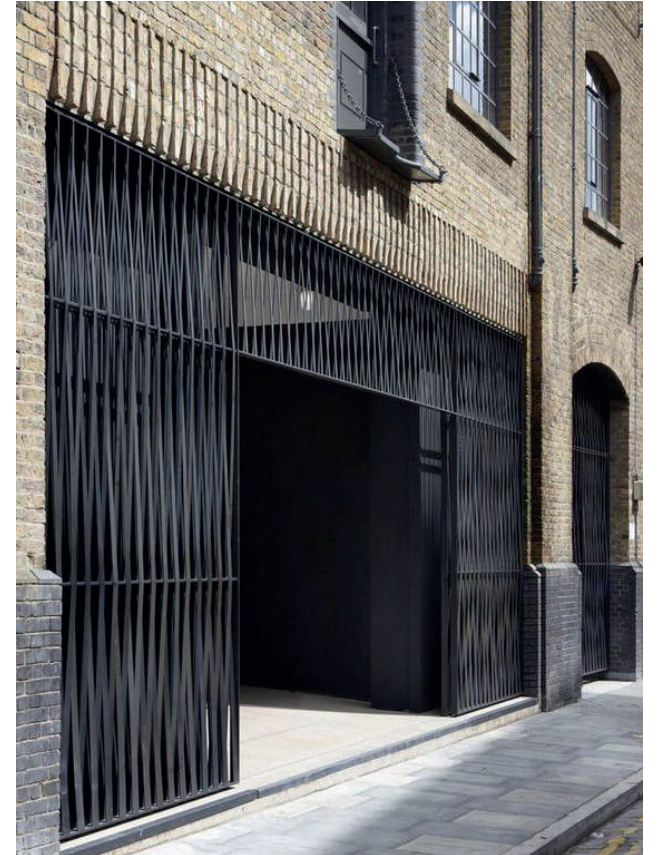


Precedent image

7.5 HEADHOUSE OVERCLAD & ENTRANCE



Illustrative view, Catton Street



Duggan Morris - The Loom, Whitechapel



King's Cross tunnel by Allies & Morrison

7.6 MATERIALS MATERIALS PALETTE

EXISTING MATERIALS PALETTE



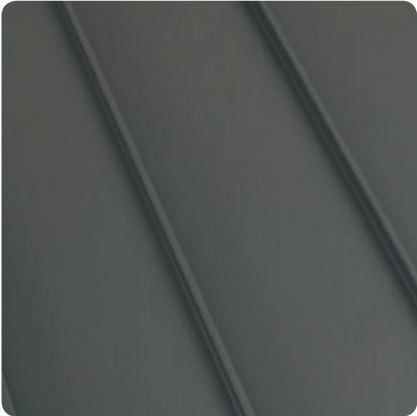
COPPER TURRET ROOF

STONE FACADE

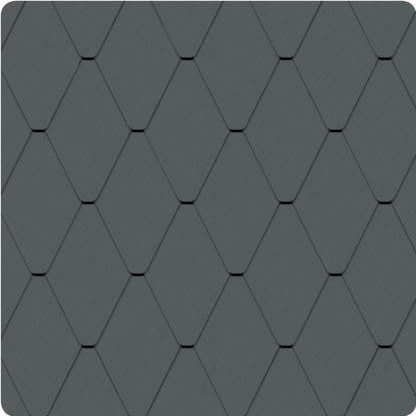
CATSLIDE ROOF
(TO BE REPLACED)

GLAZED WHITE BRICK

PROPOSED MATERIALS PALETTE



MC01 METAL CLADDING 01
STANDING SEAM 600mm



MC02 METAL CLADDING 02
RHEINZINC 15° DIAMOND ZINC



MC03 METAL CLADDING 03
PRE-PATINATED COPPER



BR01 BRICK TYPE 01
WHITE GLAZED BRICK



BR03 BRICK TYPE 03
'STONE' BRICK



BR05 BRICK TYPE 05
WHITE BRICK



BR02 BRICK TYPE 02
BLACK GLAZED BRICK



BR04 BRICK TYPE 04
CHARCOAL BRICK



DECORATIVE METAL SCREEN
GROUND LEVEL