

7.2 FLOOR PLANS FOURTH FLOOR



The fourth floor is similar to the floor below.

The connecting wall between the new link and corner turrets terminates at a cornice level (refer to page 98) with an infill sloping roof above ensuring that external features of the corner turrets are still visible.

The northeast corner rises above the UKPN building and is curved matching the western corners. An additional fire-rated window enables direct views to Red Lion Square.

7.2 FLOOR PLANS FIFTH FLOOR



The fifth floor differs slightly due to window positions in Carlisle House and the further receding wall between the link and corner turrets (refer to page 98).

The southern hotel lift terminates at Carlisle 5th floor level as the link above steps back.

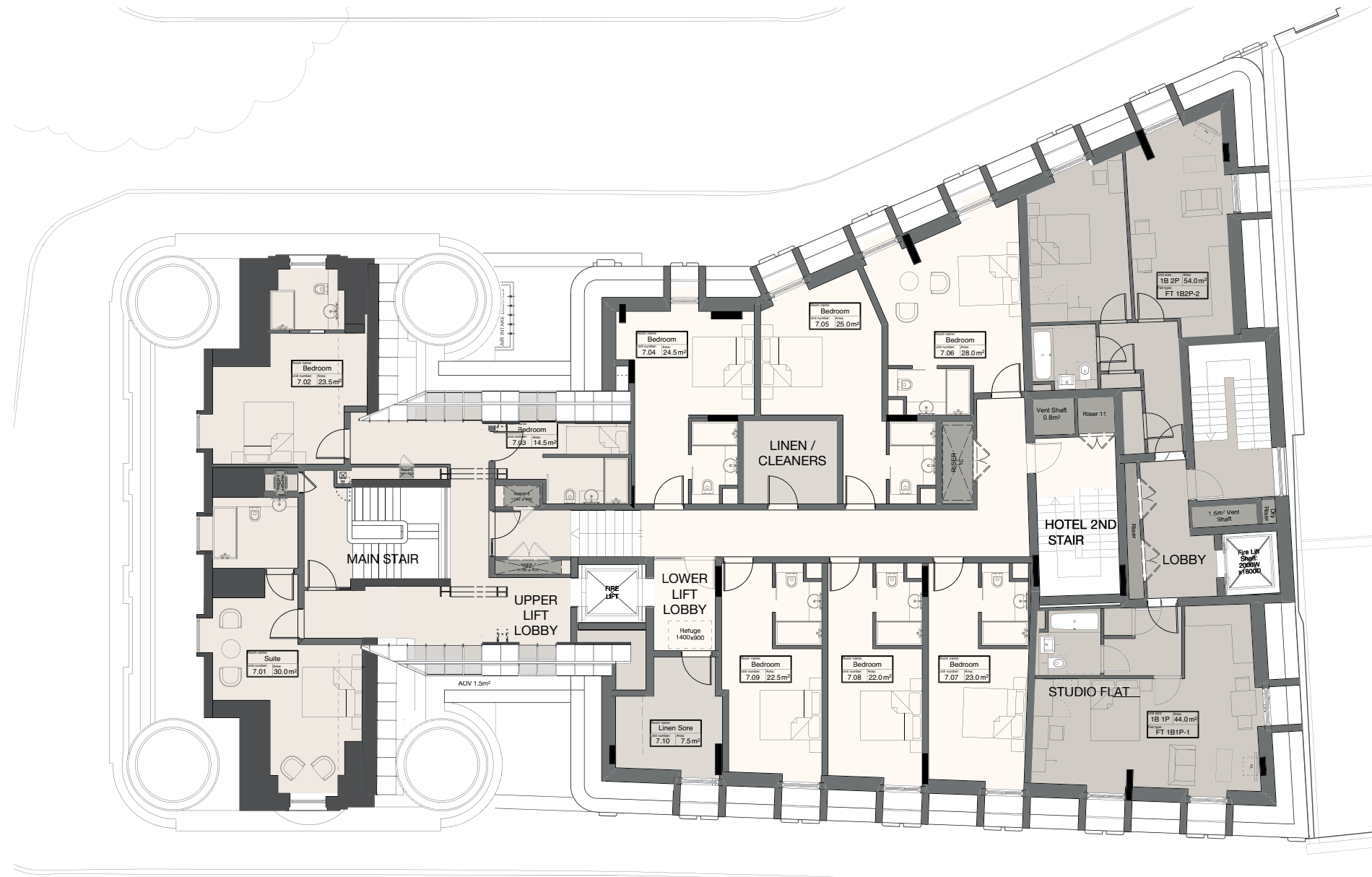
7.2 FLOOR PLANS SIXTH FLOOR



The sixth floor glazed mansard roof retreats to reveal as much of the existing 'catslide' roof as possible.

The decorative turrets are visible from the lift lobby and internal corridor.

7.2 FLOOR PLANS SEVENTH FLOOR

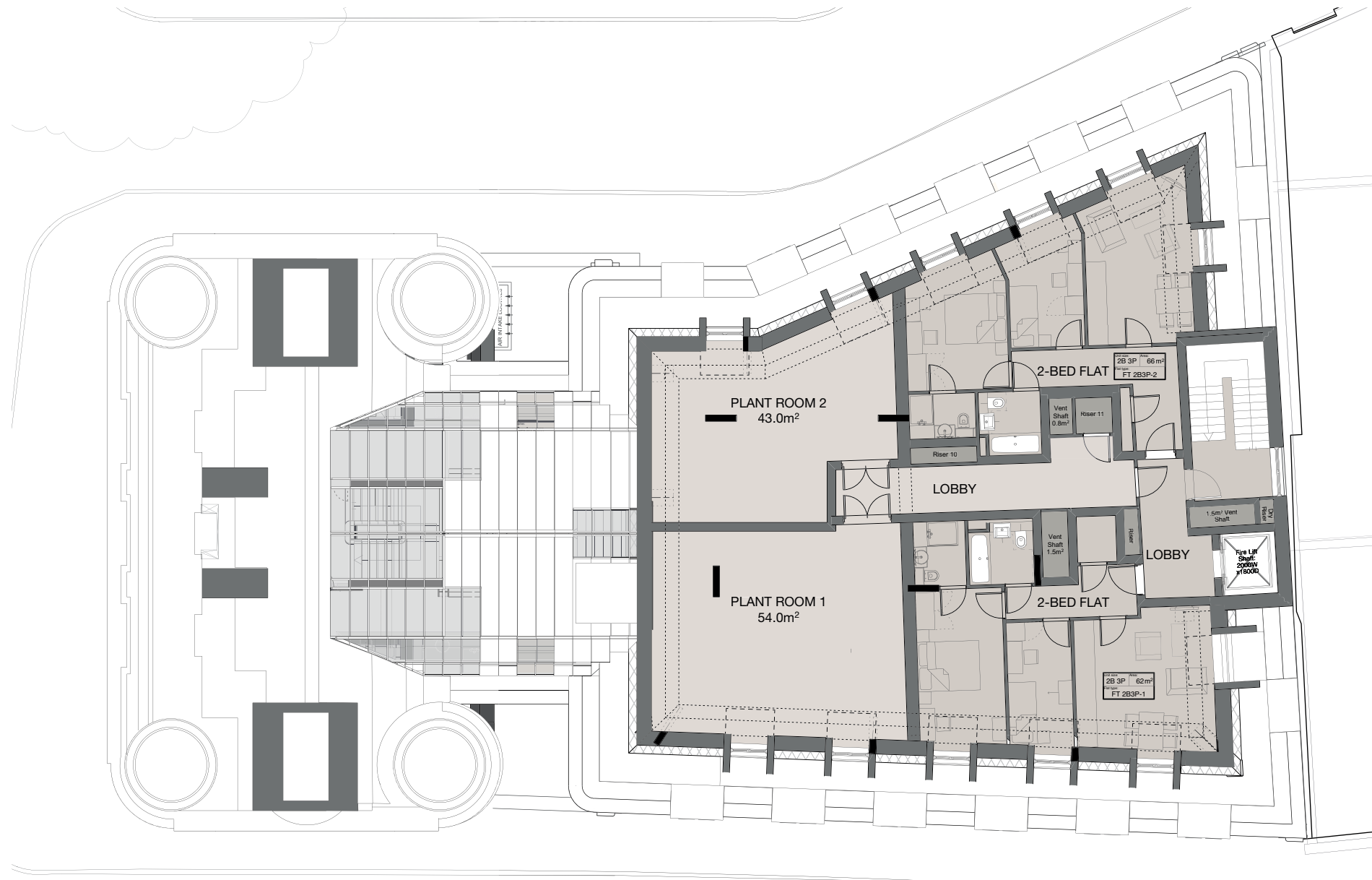


The seventh floor of the new hotel building steps back creating the lower mansard clad in diamond zinc tiles.

Projecting dormers sit on top of the brick piers below. They are clad in metal matching the patinated copper rings below the Carlise House turret dome roof.

The east part of the building accommodates 2 apartments both providing double aspect and views to the east across the UKPN building.

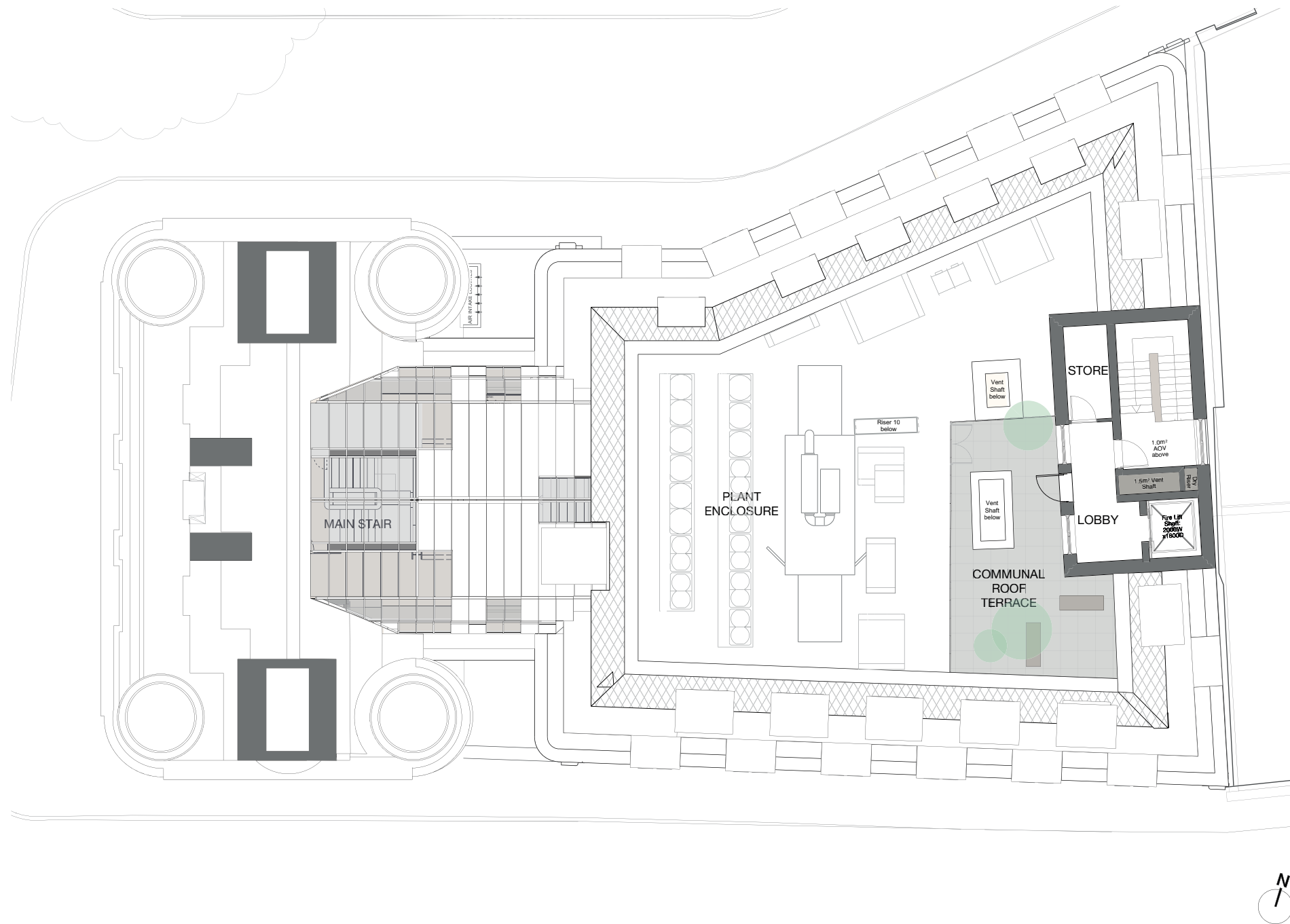
7.2 FLOOR PLANS EIGHTH FLOOR



The eight floor rises above the glazed link and Carlisle House roof and matches the height of the chimneys.

This floor is the upper mansard level and accommodates two 2-bedroom apartments with double aspect and plant space for both the hotel and the apartment building.

7.2 FLOOR PLANS ROOF TERRACE

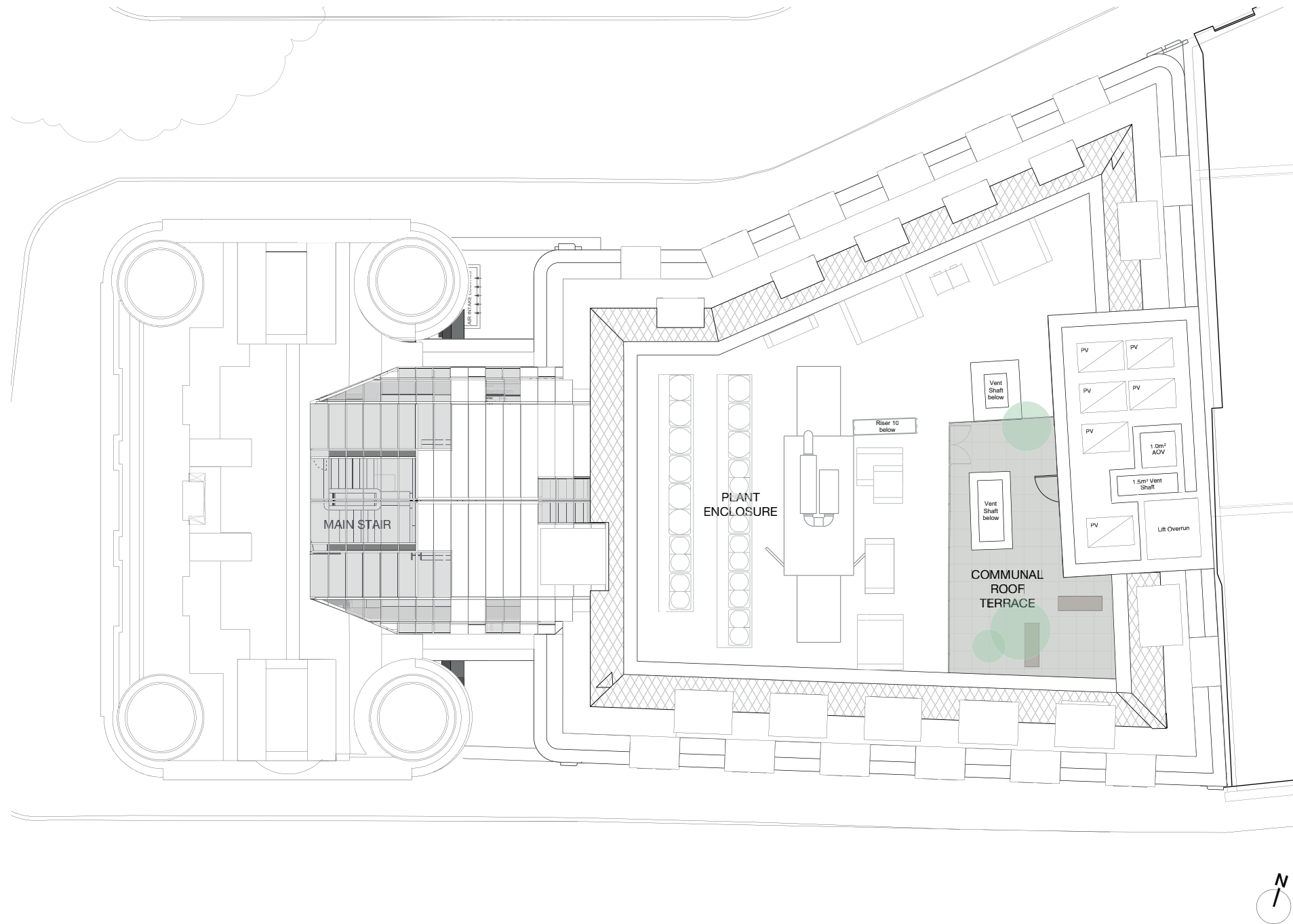


The roof level is surrounded by sloping parapets as part of the mansard roof.

This level is accessed via the residential core and offers a large south-facing communal residential roof terrace overlooking the surrounding roofscape of Holborn.

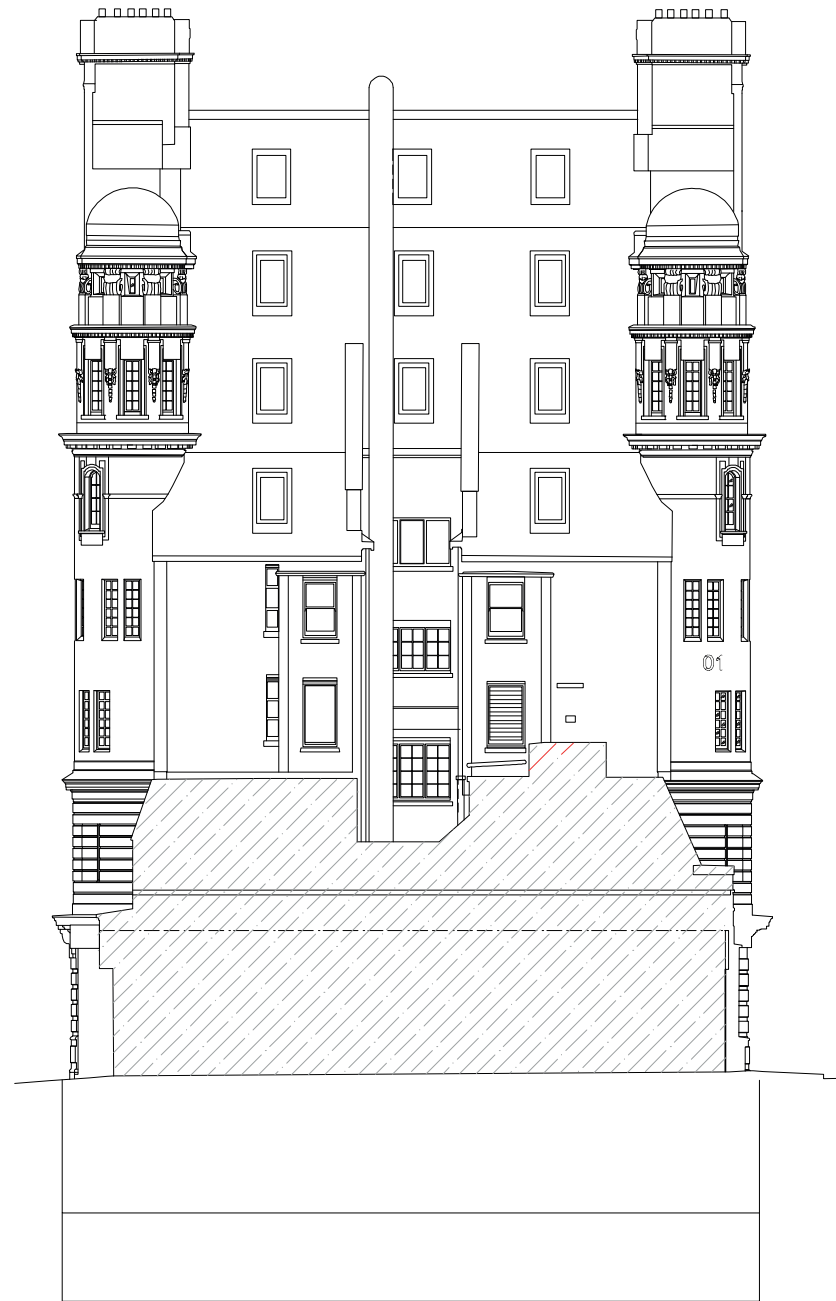
The western part of the roof provides more space for plant equipment essential for the hotel. A high screen separates the plant enclosure from the roof terrace.

7.2 FLOOR PLANS UPPER ROOF

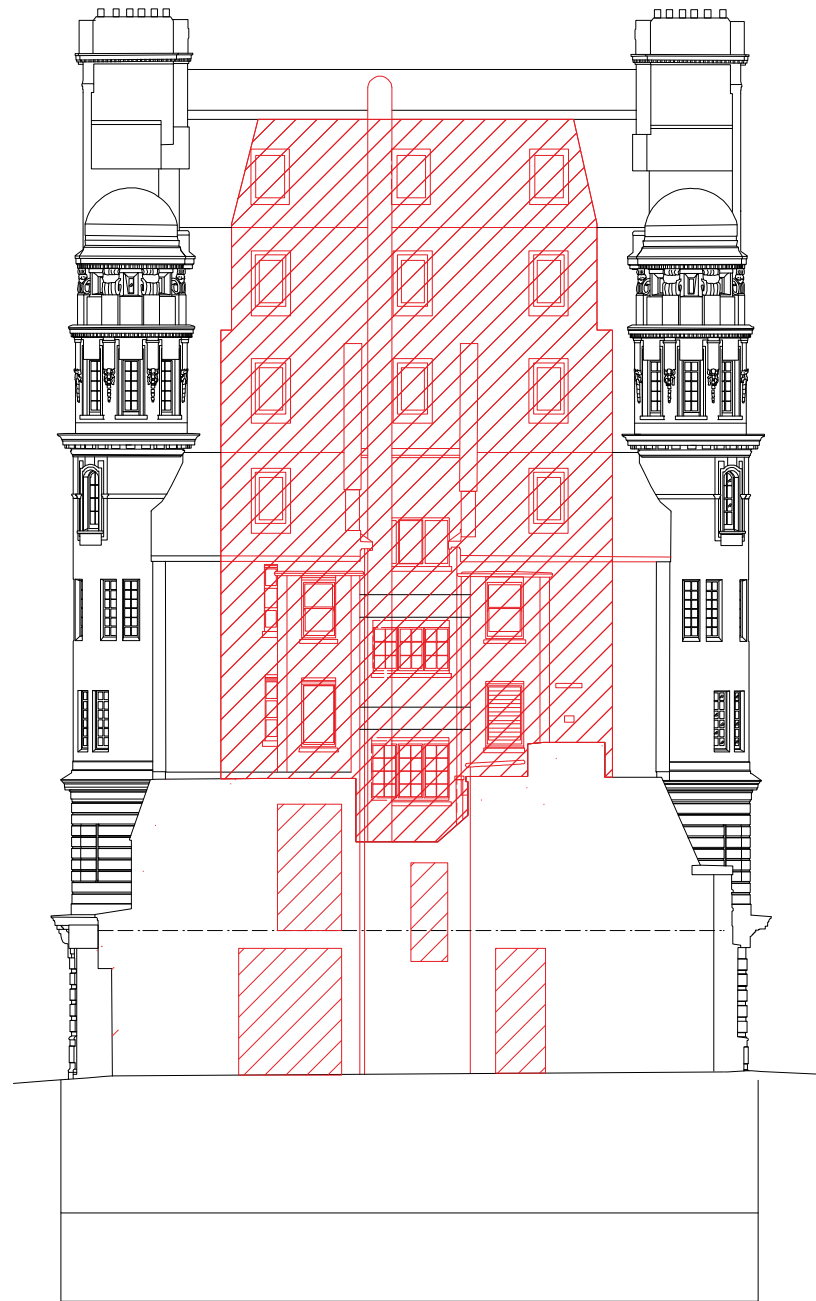


The flat roof above the residential core provides space for photo-voltaic panels.

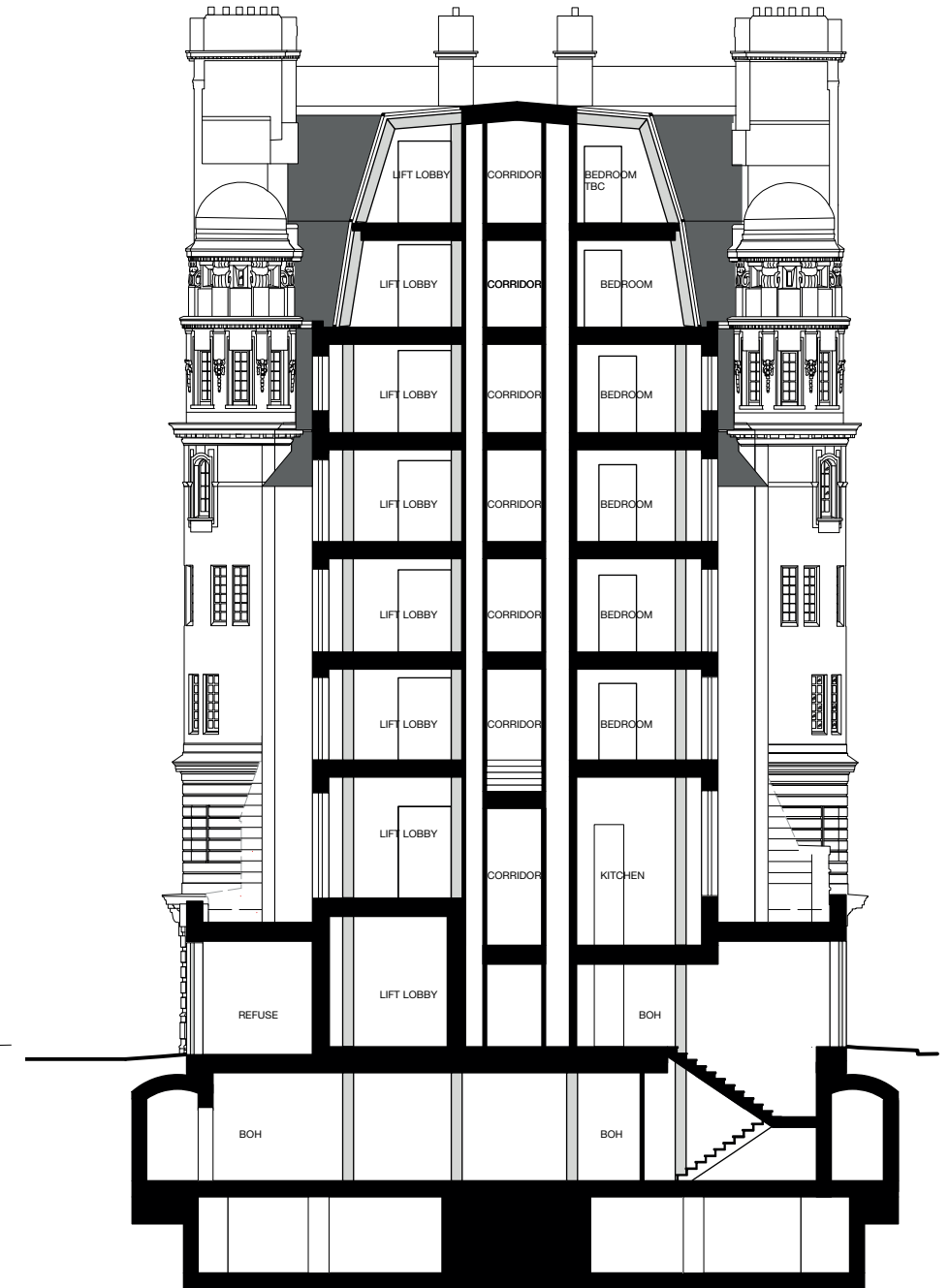
7.3 HERITAGE CONNECTION



Current rear elevation. Crossrail demolition shown hatched in grey.

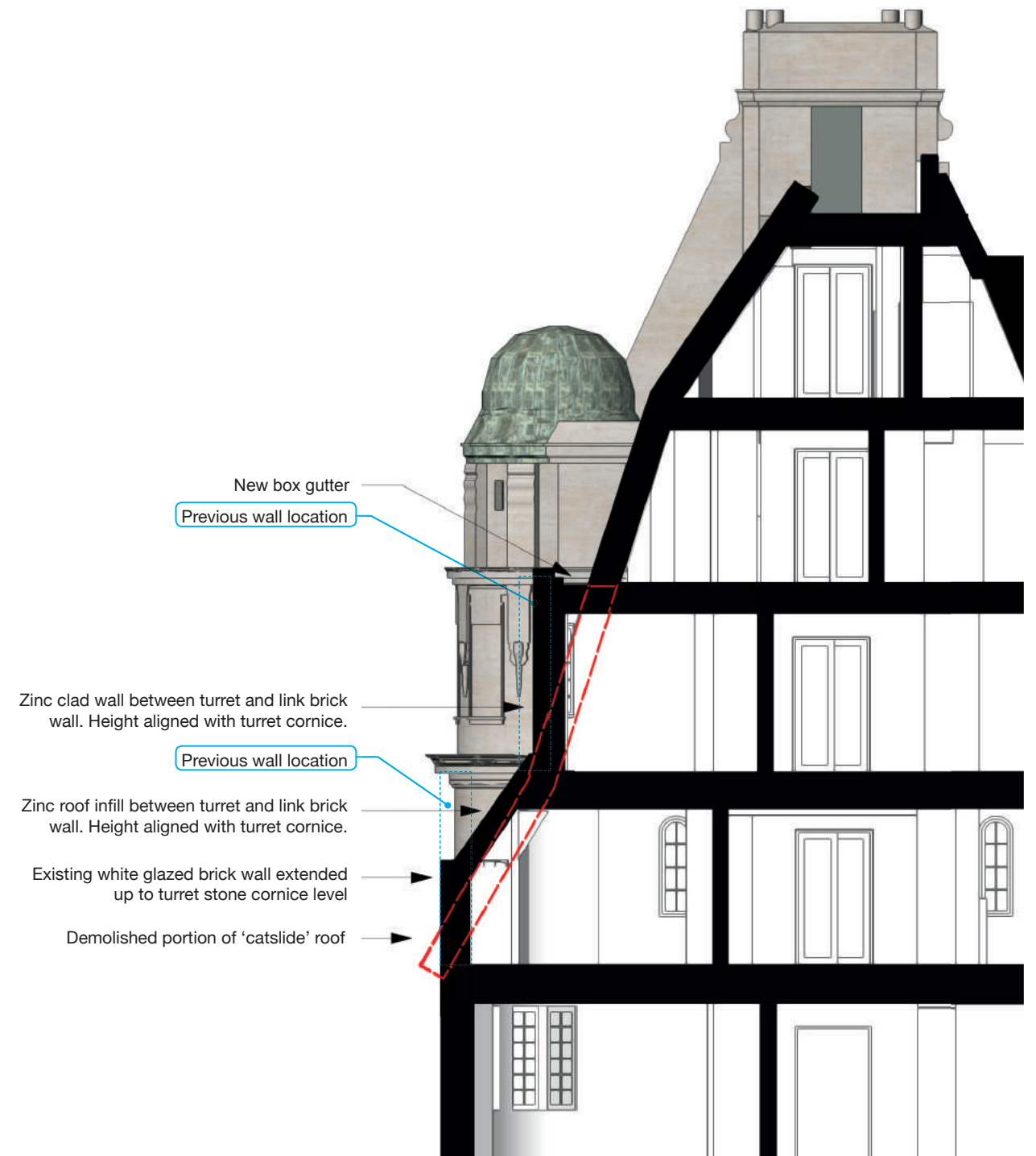
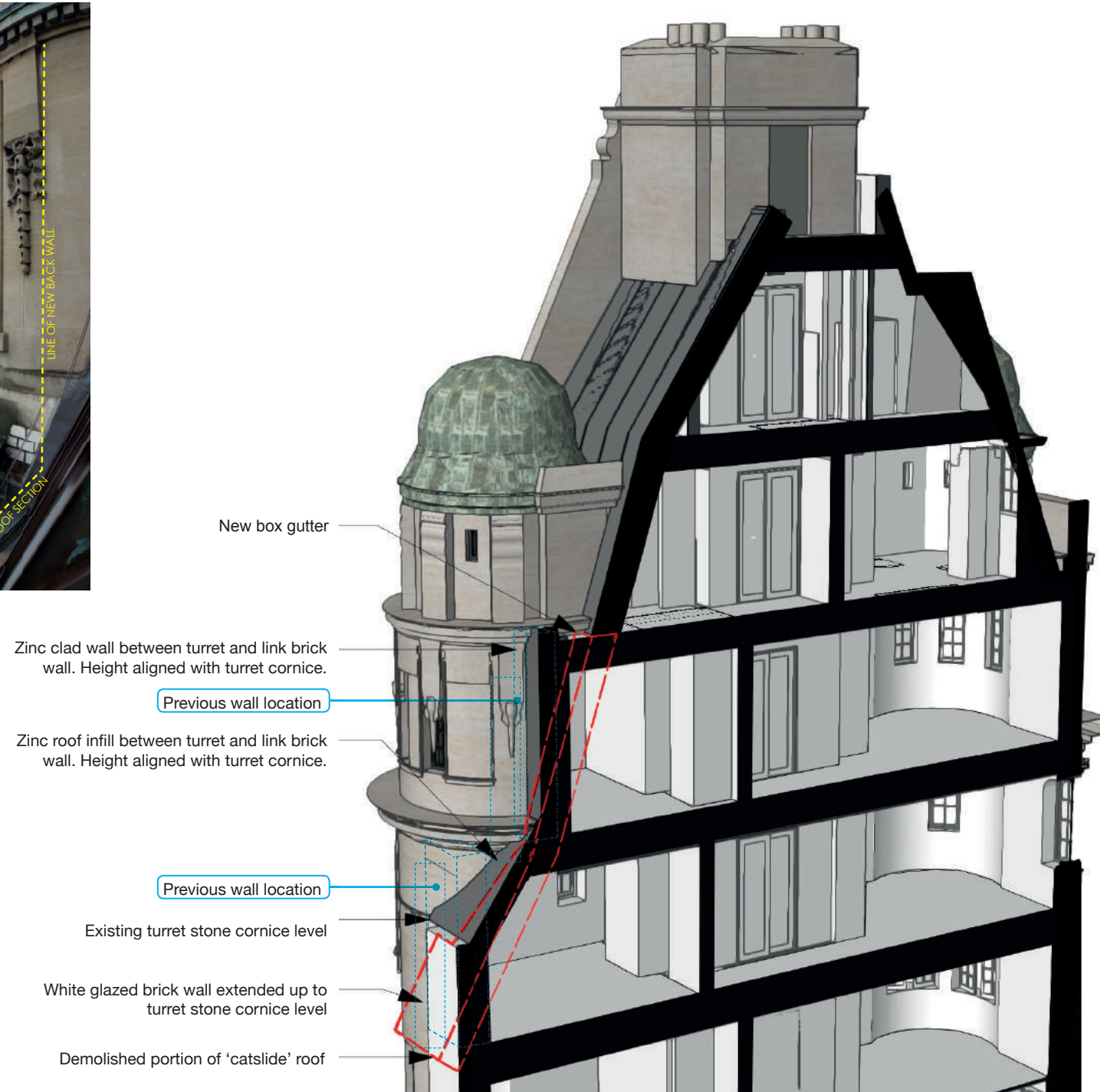


Proposed removal of parts of rear wall and roof to create link to new build.

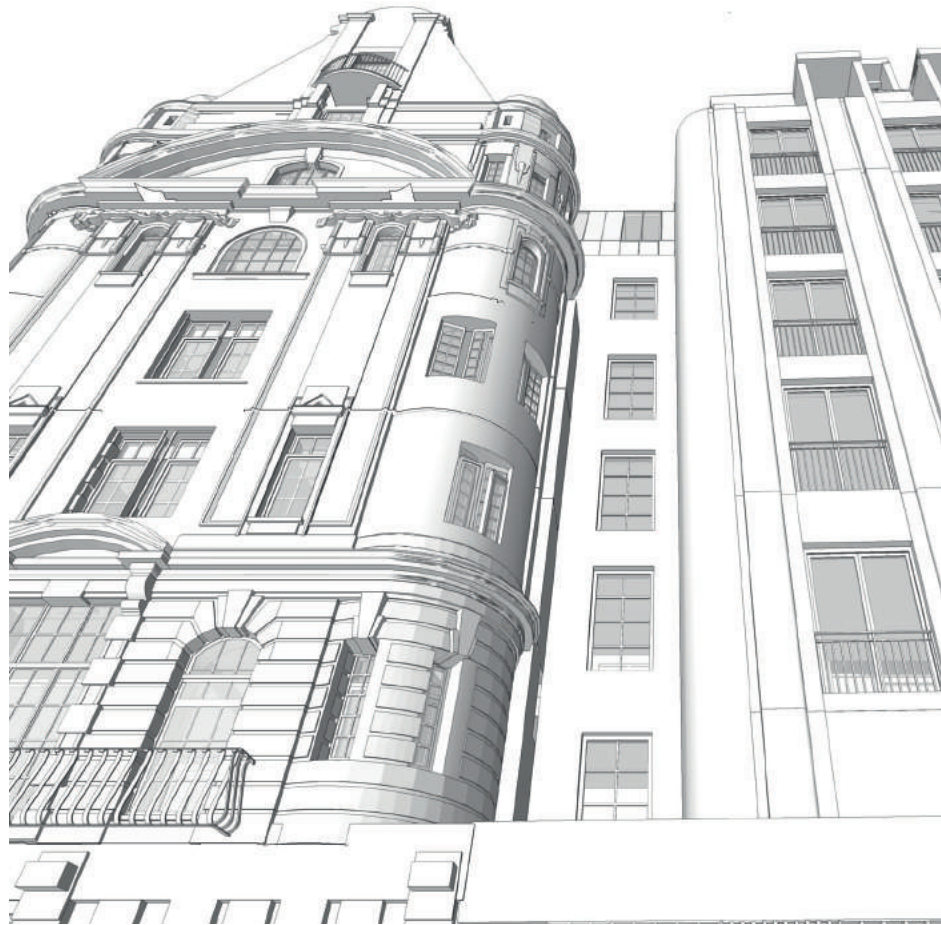


Proposed section through link connection.

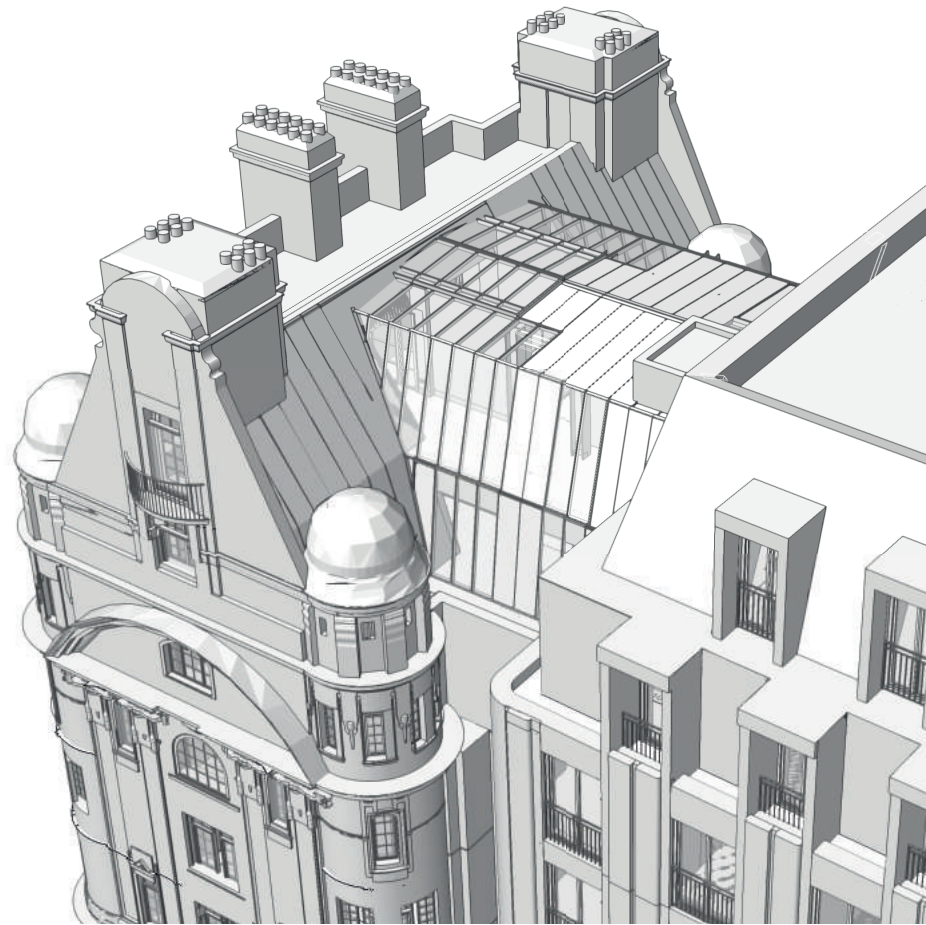
7.3 HERITAGE CONNECTION TURRET



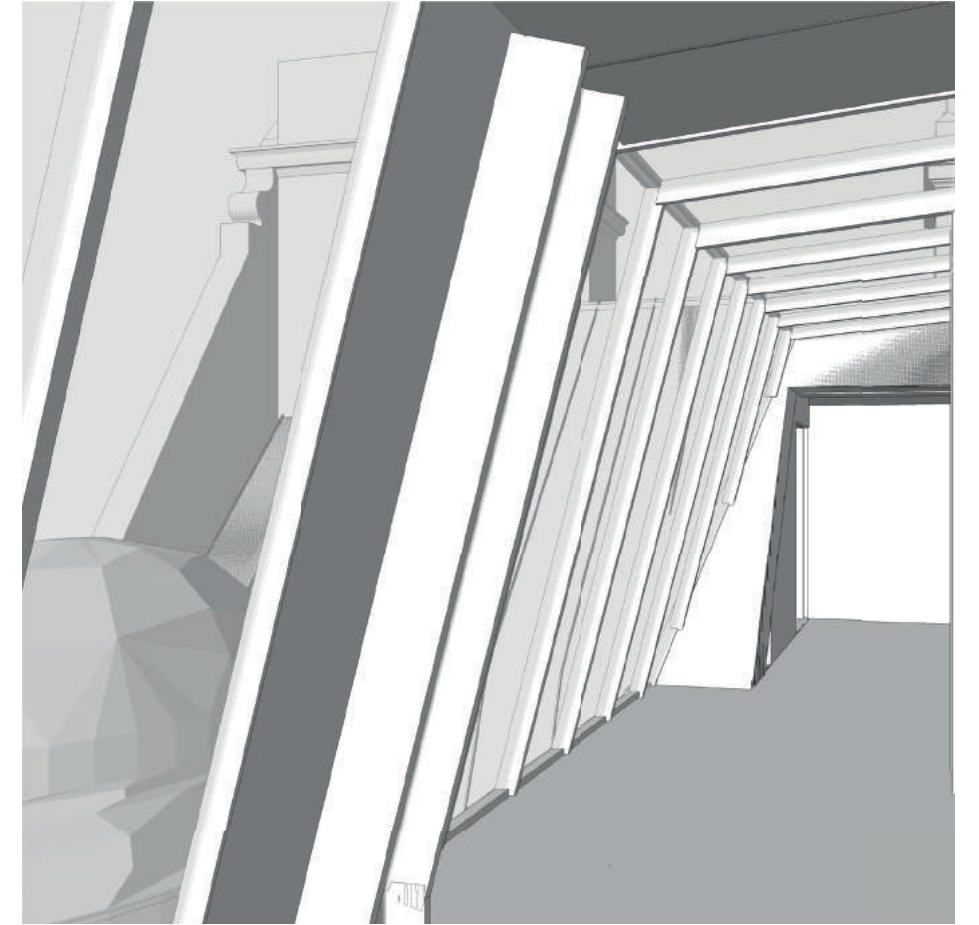
7.3 HERITAGE CONNECTION



Recessed link between Carlisle House and new hotel building with double-height glazed link at 6th floor leaving corner turret legible at all levels.



Glazed link at 6th & 7th floor relates in height and slope to existing 'catslide' roof.



Internal view from lift lobby at 7th floor allowing views across the turret dome roof.