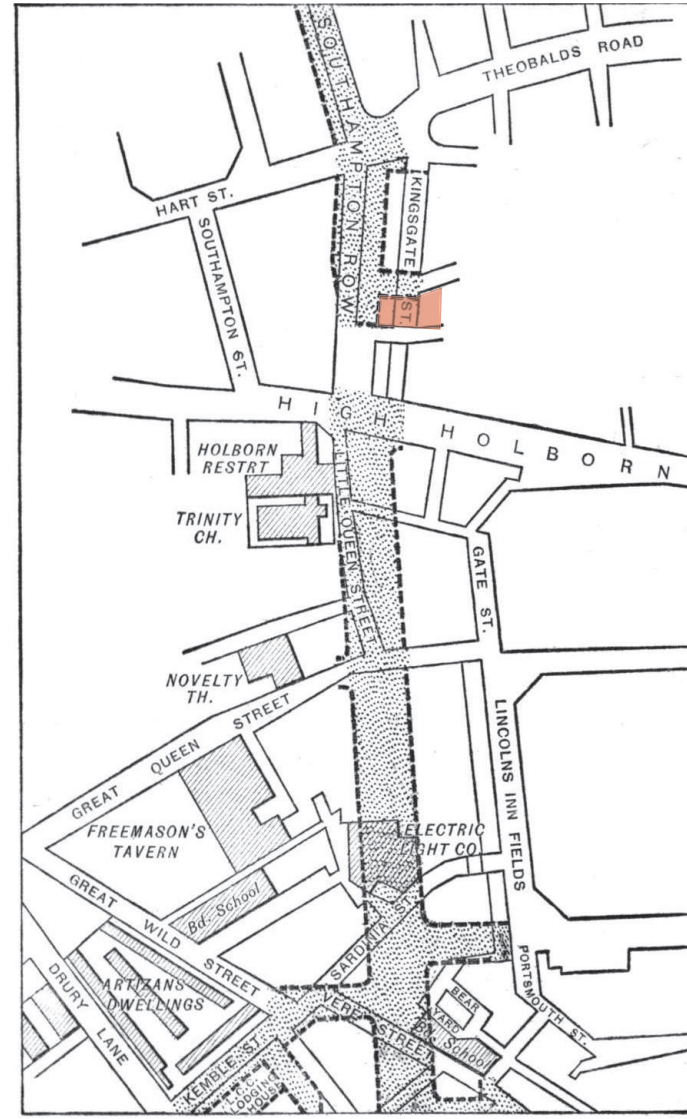


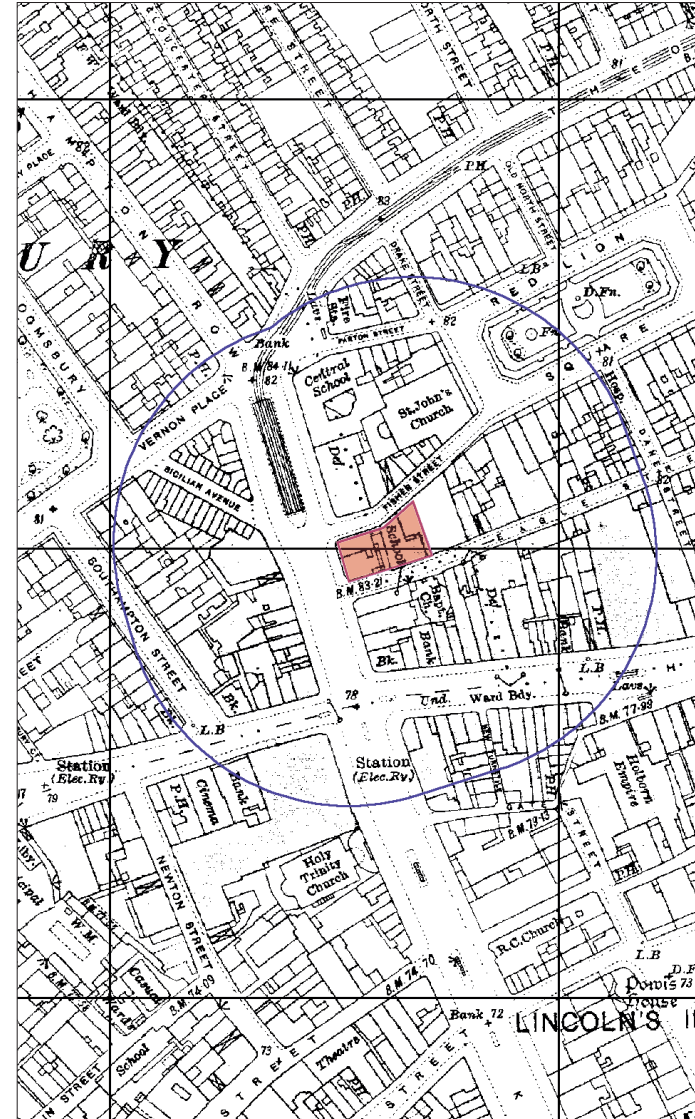
2.3 SITE HISTORY



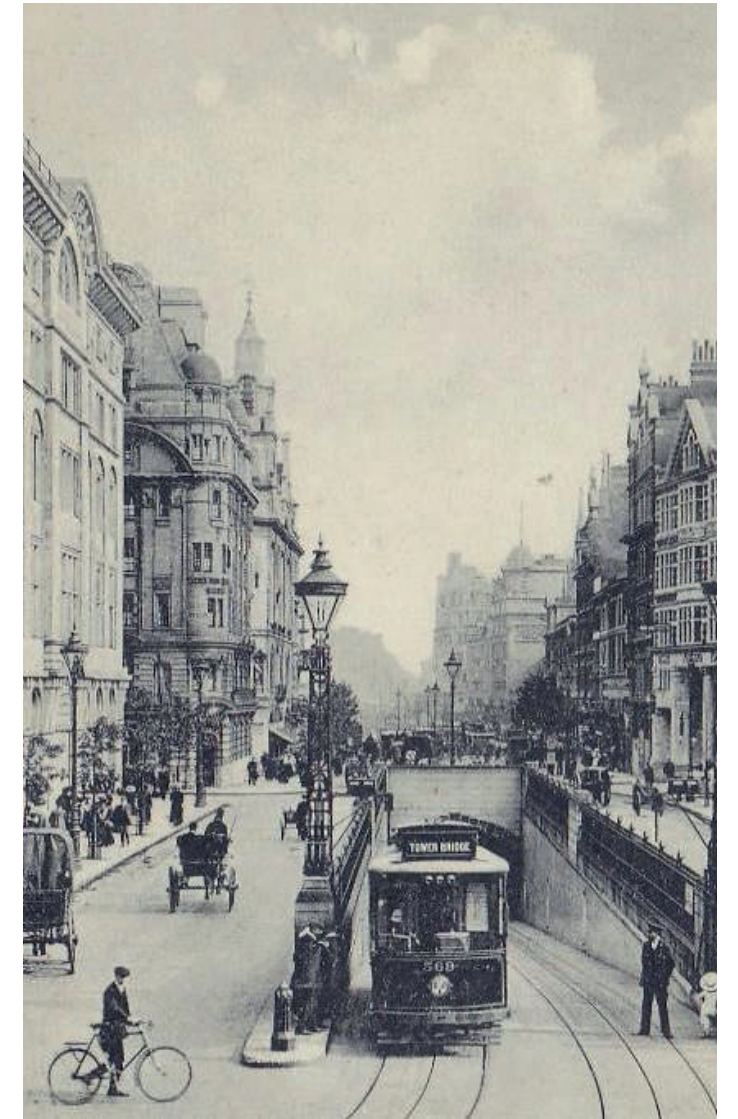
Ordnance Survey Plan 1876



Kingsway plan, 1900



Ordnance Survey Plan 1916 showing the new buildings along Kingsway & Sicilian Avenue and the new the tram tunnel.



Southampton Row looking south

Please refer to Heritage Statement by HeritageCollective.

2.3 SITE HISTORY



Tollard Royal Hotel, 8 Southampton Row, Holborn, 1907

LIST DESCRIPTION

EXTERIOR

6 storeys plus roof storeys at 2 levels. 5 bays with corner turrets. Rusticated ground and first floors, above ashlar faced. Main entrance on left hand corner; round-headed with rusticated keystone and voussoirs, cartouche over and broken segmental pediment.

Square-headed windows except to 4th floor where round-headed with heavy keys. Segmental pediments to 1st floor centre windows and continuous cast-iron balcony. Cornices above ground and first floors; main cornice above fourth floor with subsidiary cornice to fifth floor. Giant pilaster strips rising from second, through fourth floor.

Corner turrets corbelled out from first floor level rising to copper covered domes. Turrets have irregular, narrow, vertically set windows. Returns with broad segmental pediment above 4th floor and tall pedimented gable above. Tall slab chimneys.

INTERIOR

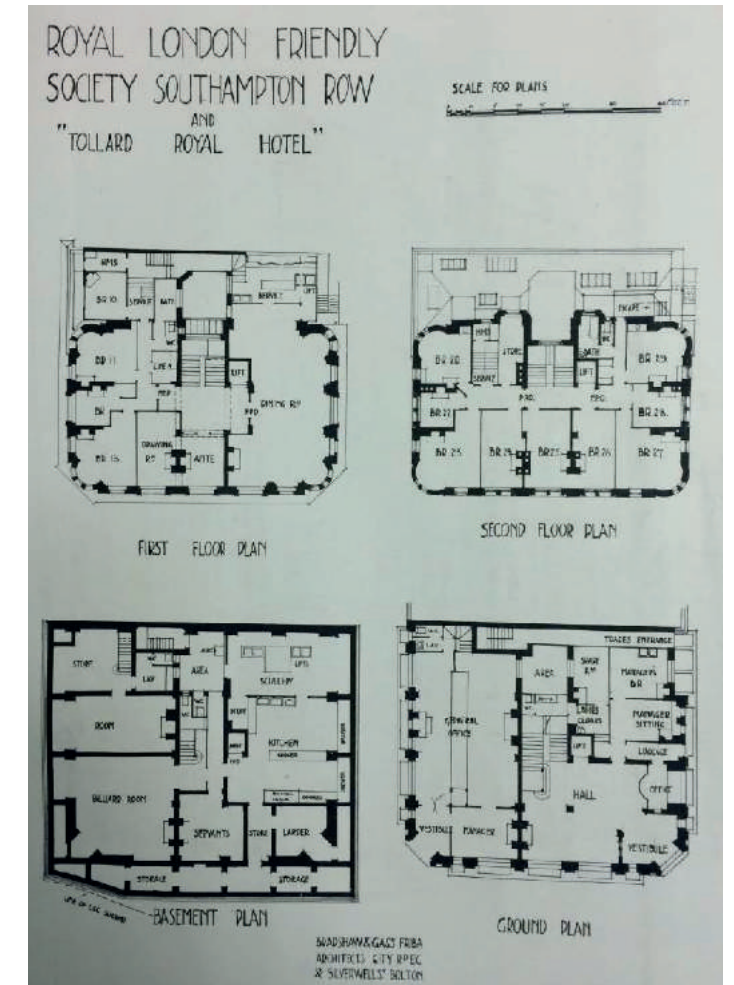
Retains original staircase and panelling to first floor.

HISTORICAL NOTE

An early example of a substantial building of steel framed construction. (The British Architect, 1 March 1907).

DESCRIPTION

'Hotel and offices, now office block and shop. 1905-6. By Bradshaw Gass and Hope. Stone faced with steel frame. Steeply pitched slated roof to eaves with 2 levels of dormers. Freestanding to front and sides. Edwardian Baroque manner.



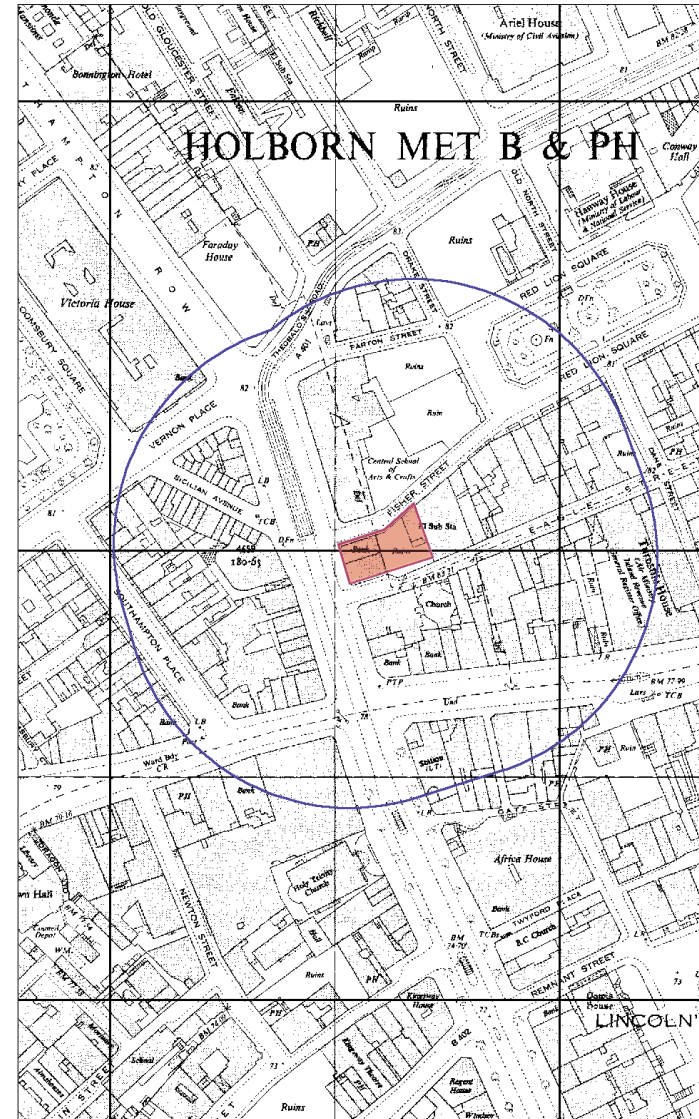
Floor plans printed in The British Architect

Please refer to Heritage Statement by HeritageCollective.

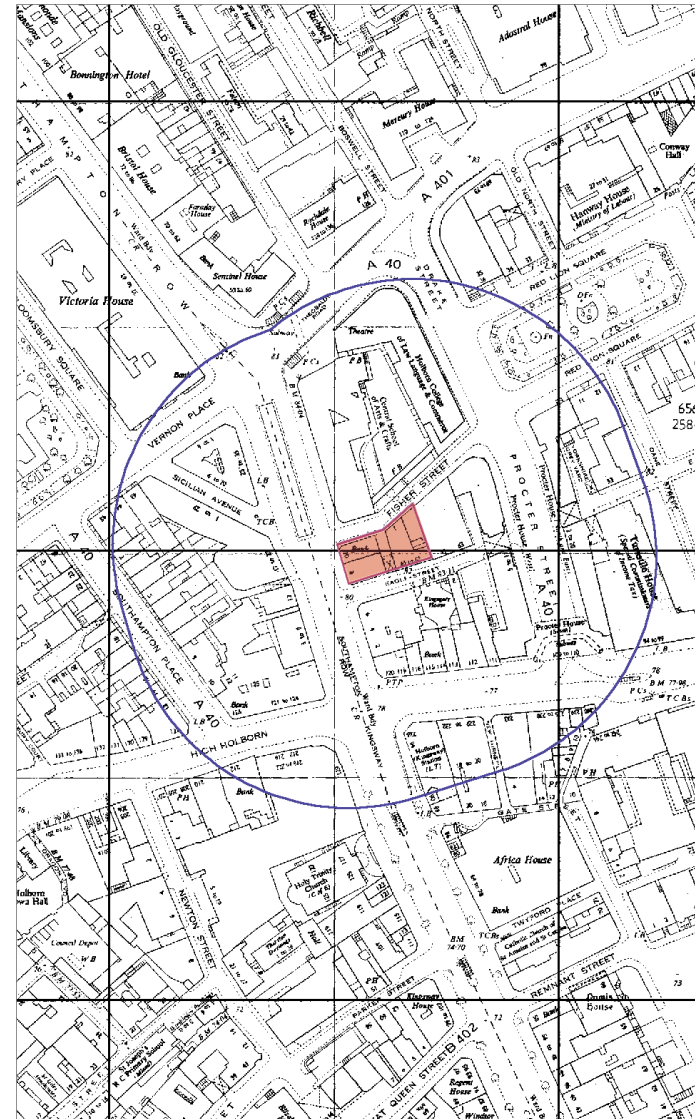
2.3 SITE HISTORY



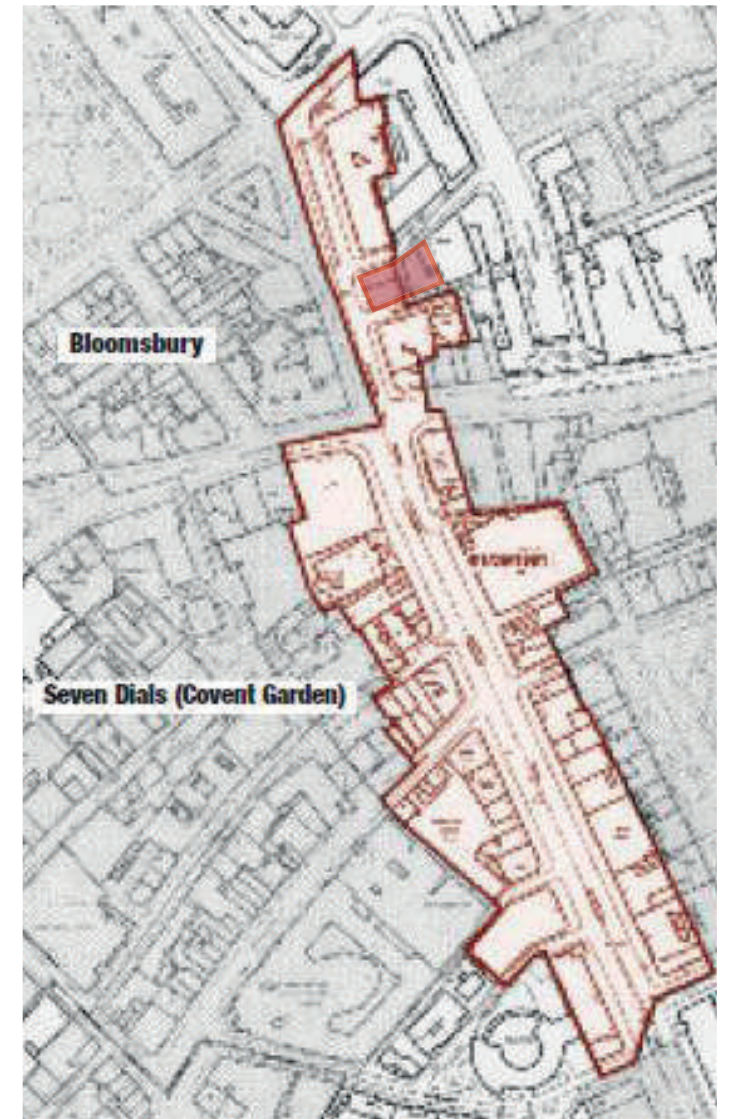
LCC Bomb damage map 1939-1945 showing bomb damaged school.



Ordnance Survey Plan 1953 showing cleared school site.



Ordnance Survey Plan 1968 showing Proctor Street and Holborn College (later Central Saint Martins College).



Kingsway Conservation area map

Please refer to Heritage Statement
by HeritageCollective.

2.4 CARLISLE HOUSE CURRENT CONDITION



Carlisle House - North West corner

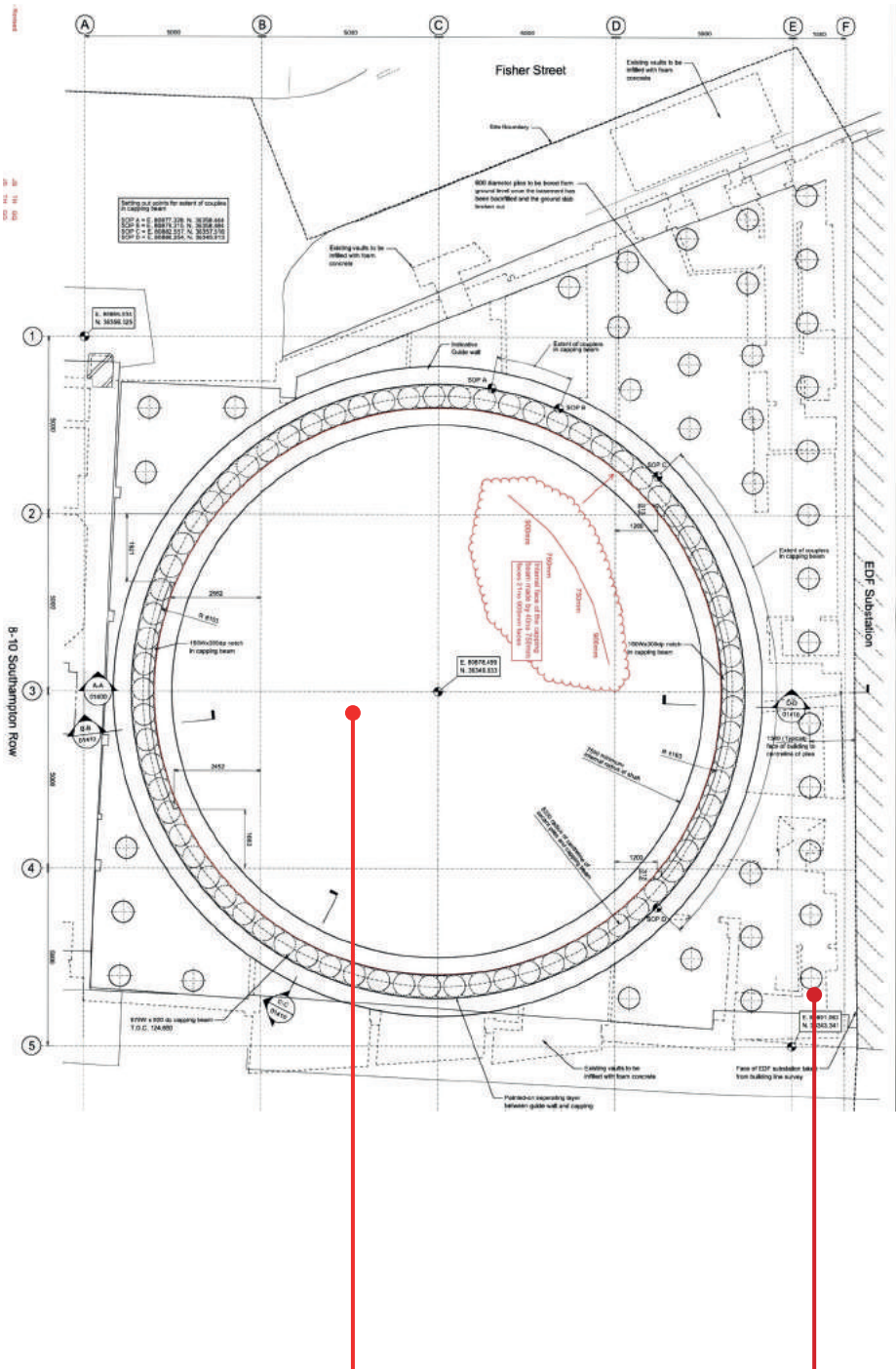


Carlisle House - South West entrance with steps



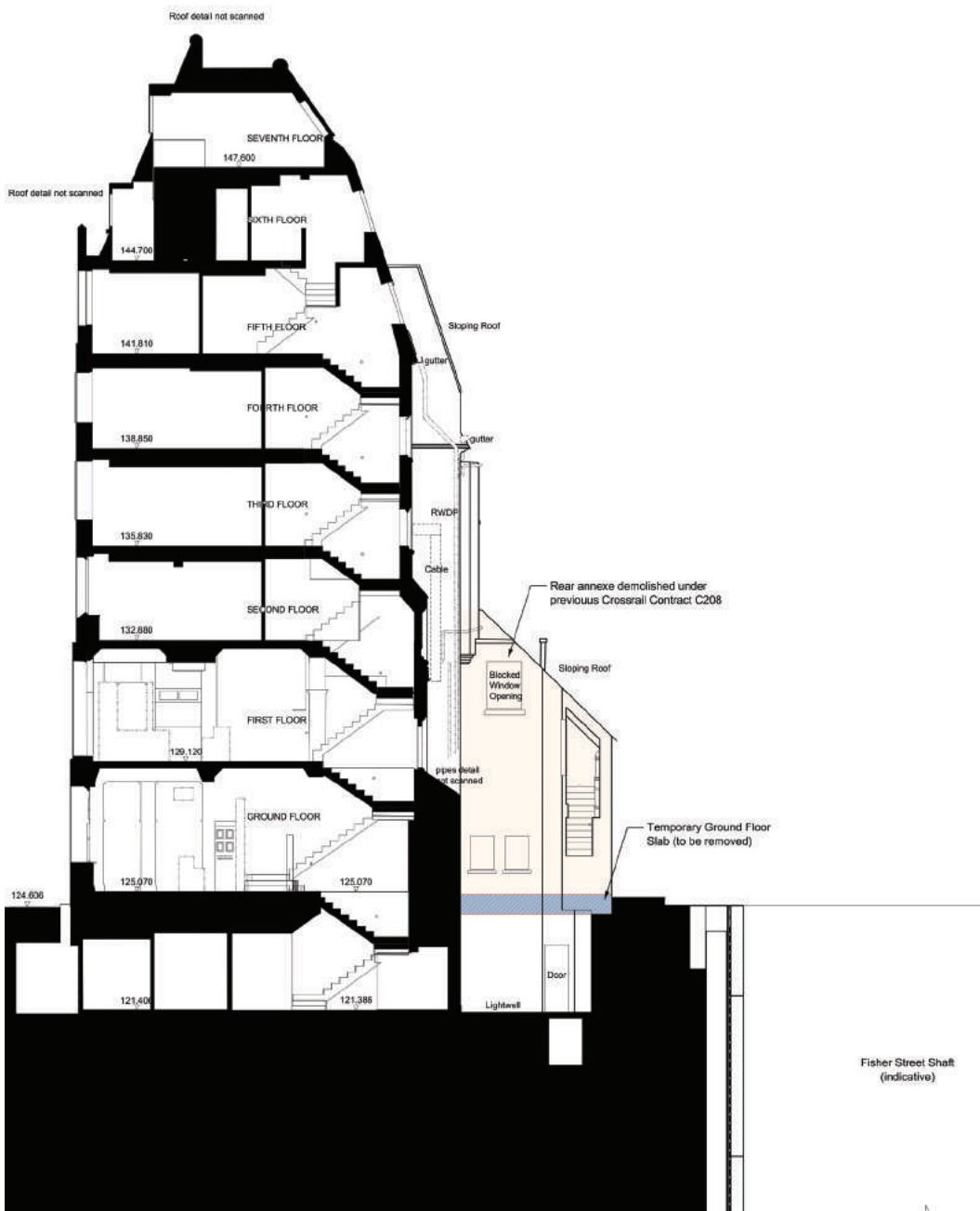
Carlisle House - Rear wall and roof to Catton Street site

2.5 CROSSRAIL HEADHOUSE TFL ACCESS SHAFT



TfL access shaft below ground

Piles in place for new building

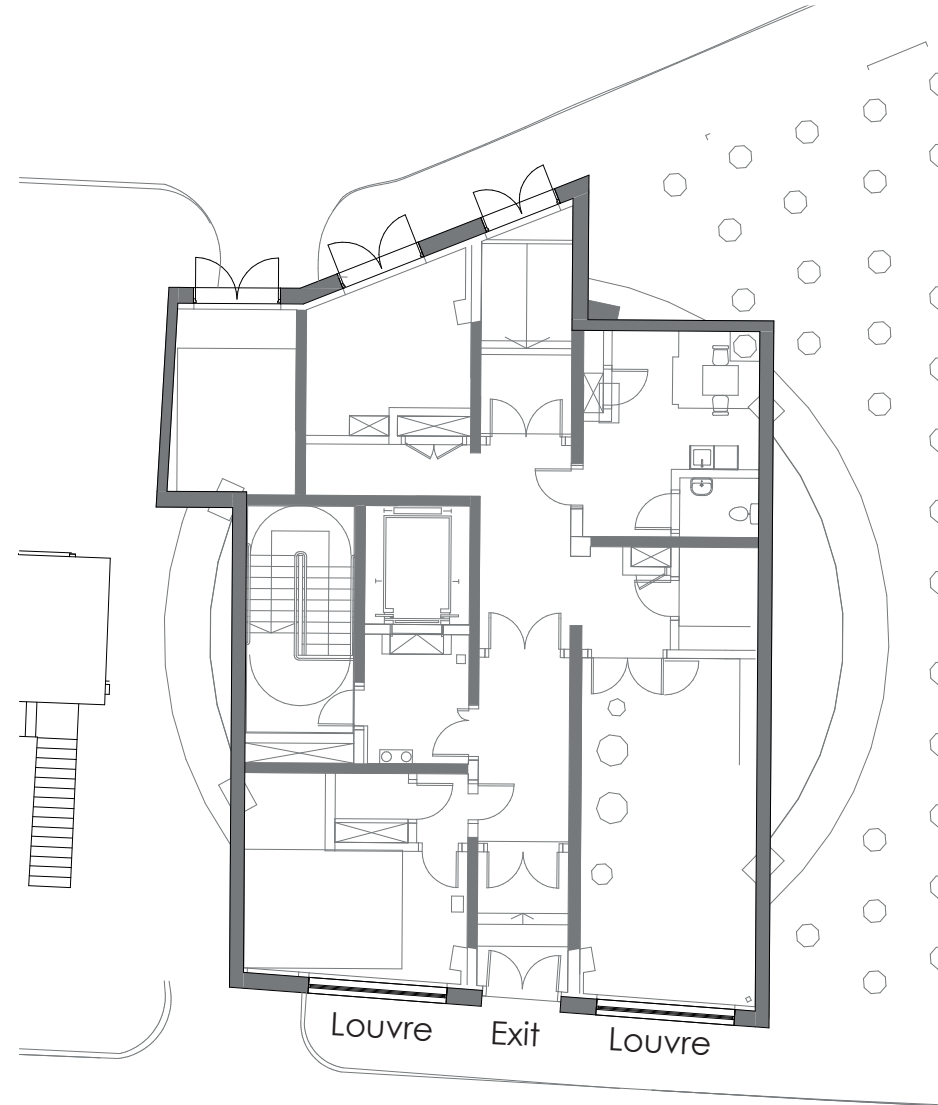


Section through Carlisle & TfL access shaft



TfL access shaft during construction

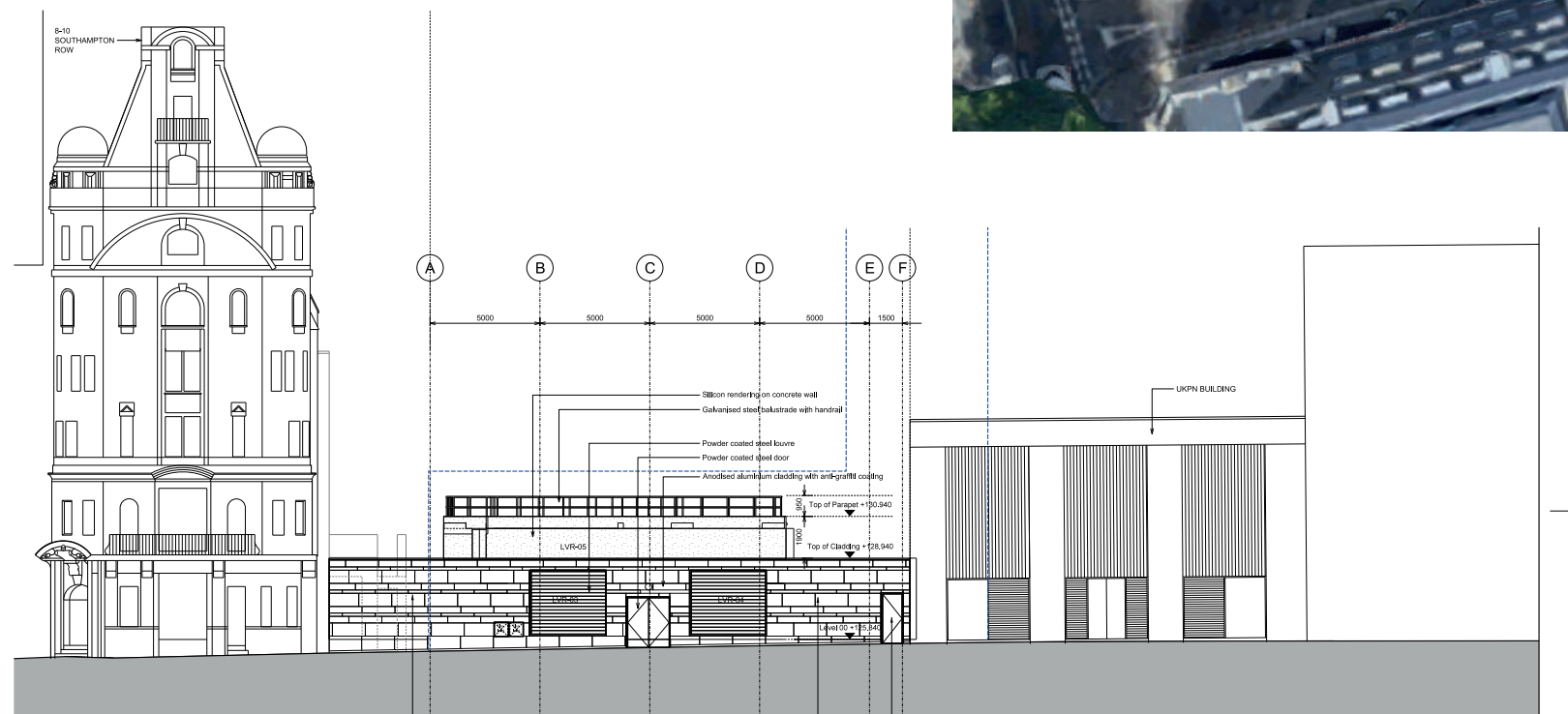
2.5 CROSSRAIL HEADHOUSE TFL HEADHOUSE



TfL headhouse above access shaft



TfL headhouse



Planning elevation for headhouse

2.5 CROSSRAIL HEADHOUSE TFL HEADHOUSE



TfL headhouse, Fisher Street

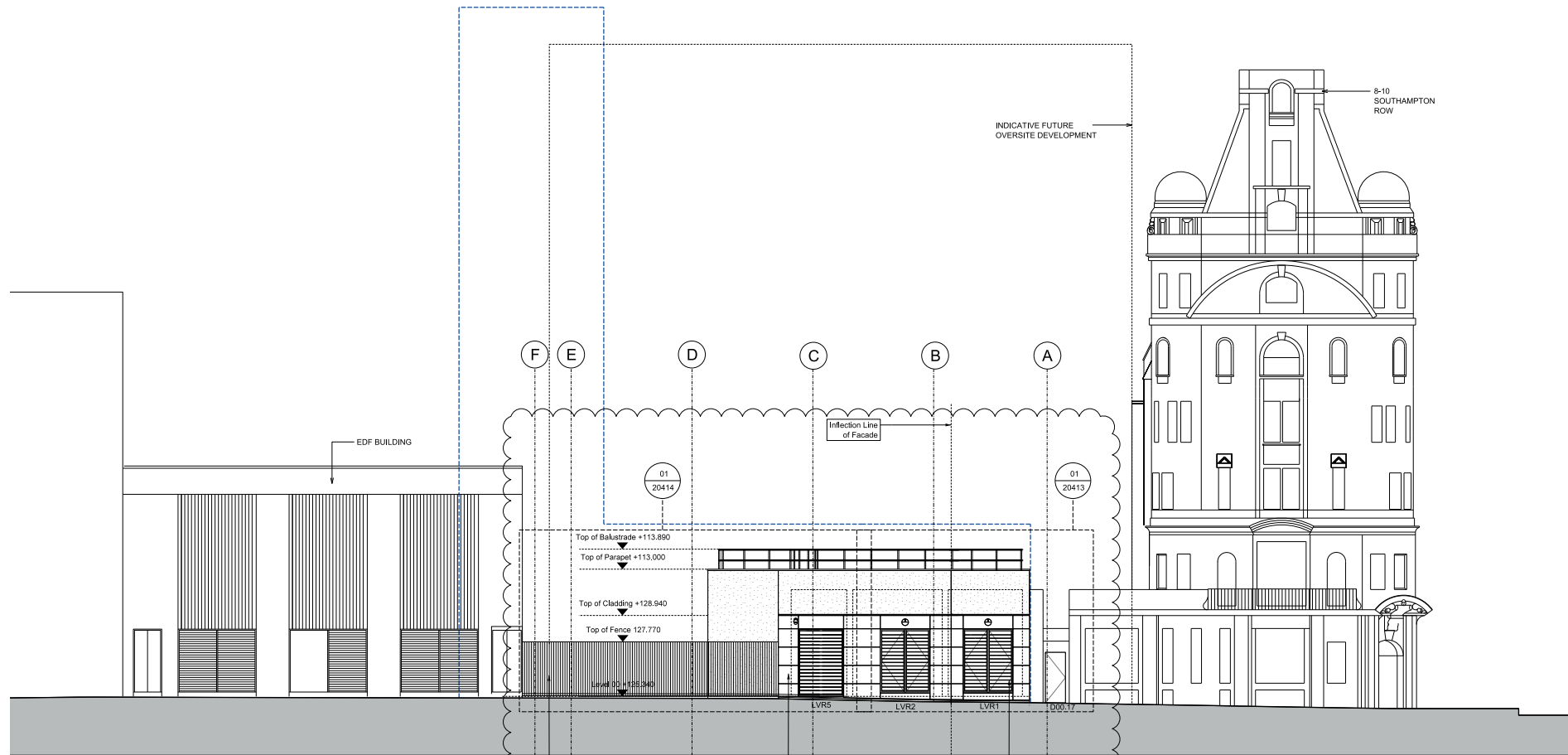


TfL headhouse temporary roof upstand can be removed for new building above

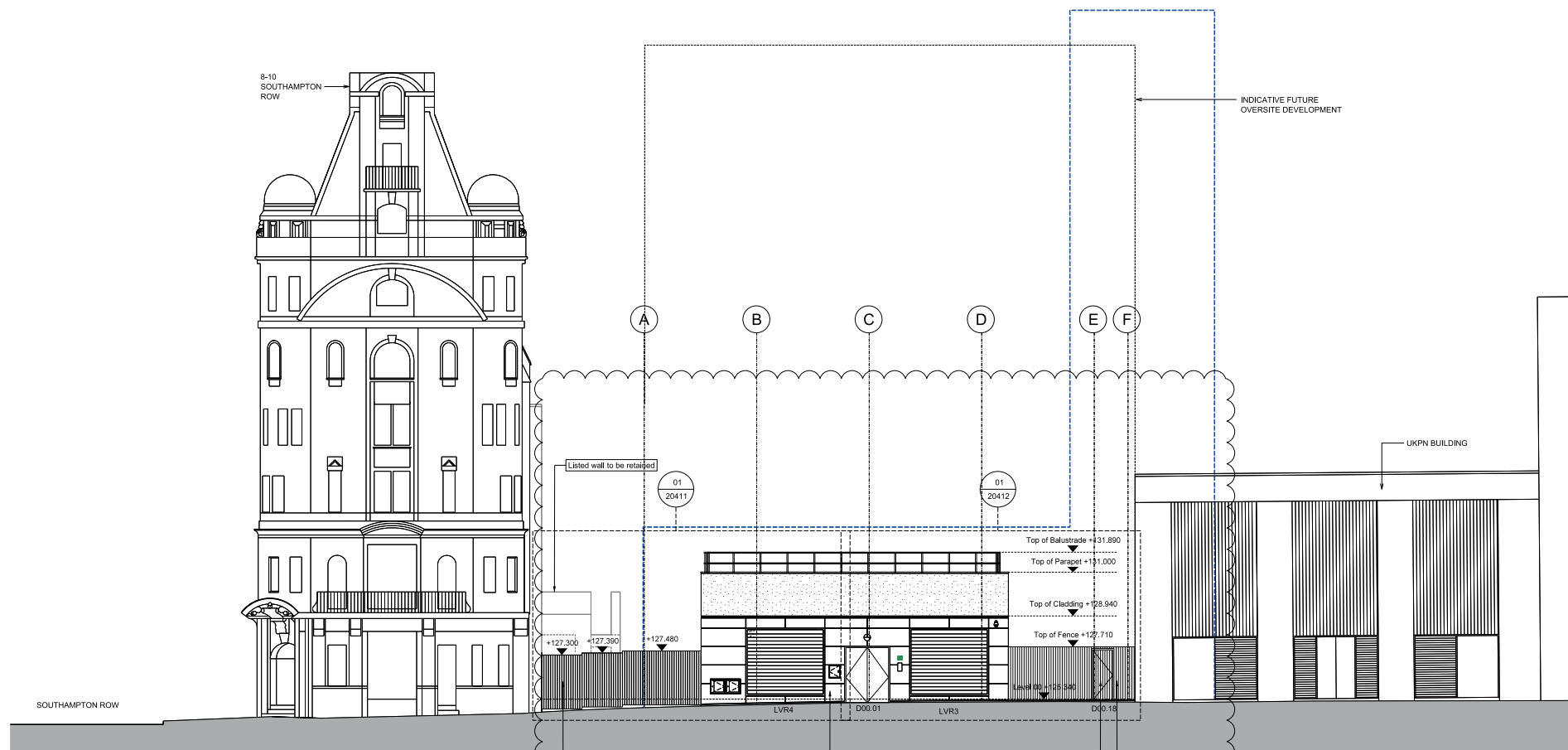


Fixed column positions in TfL headhouse designed to take loading of new building above

2.5 CROSSRAIL HEADHOUSE TFL HEADHOUSE ELEVATIONS



TfL headhouse - North elevation, Fisher Street, with temporary cladding and roof balustrade (as built).

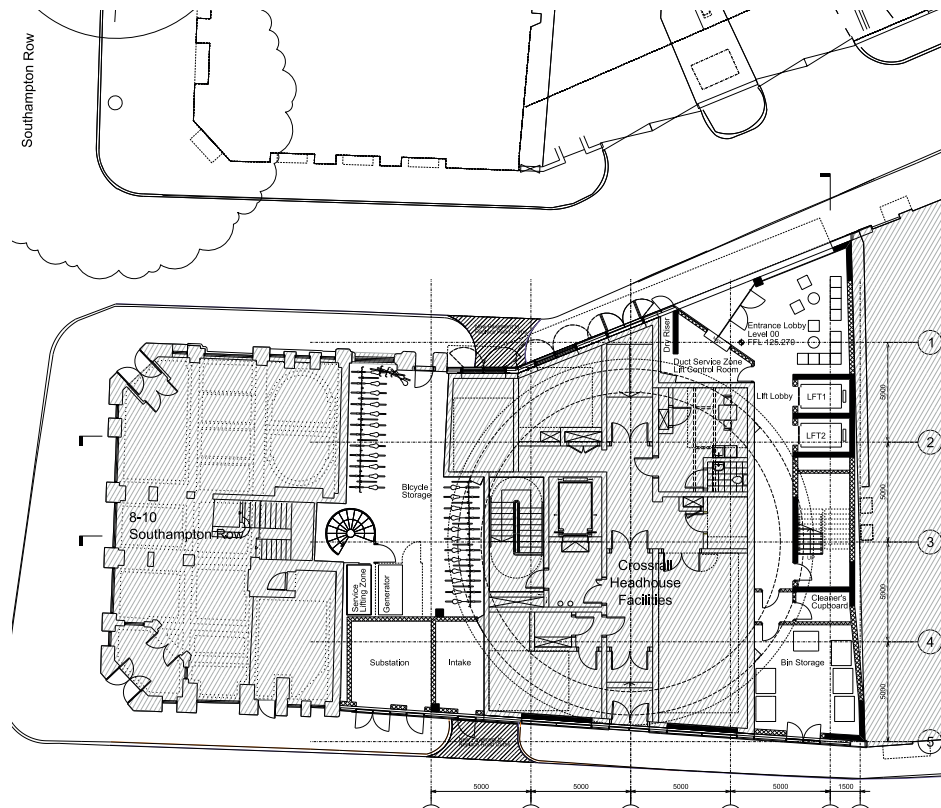


TfL headhouse - South elevation, Catton Street, with temporary cladding and roof balustrade (as built).

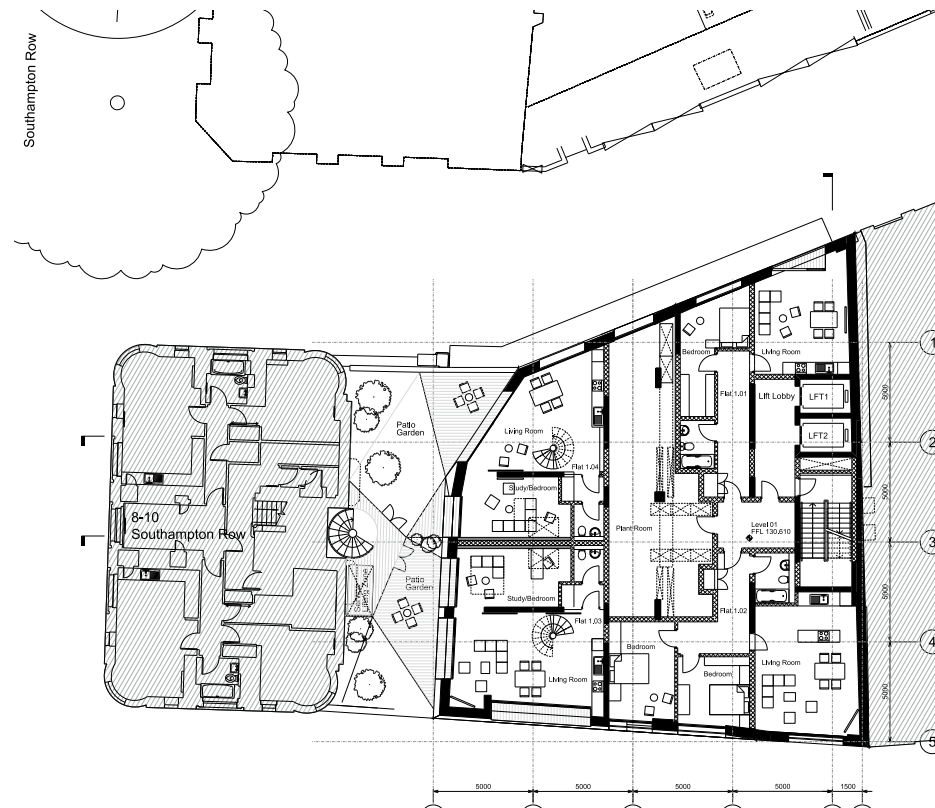
3 RECENT PROJECT HISTORY

3.1 RECENT PROJECT HISTORY

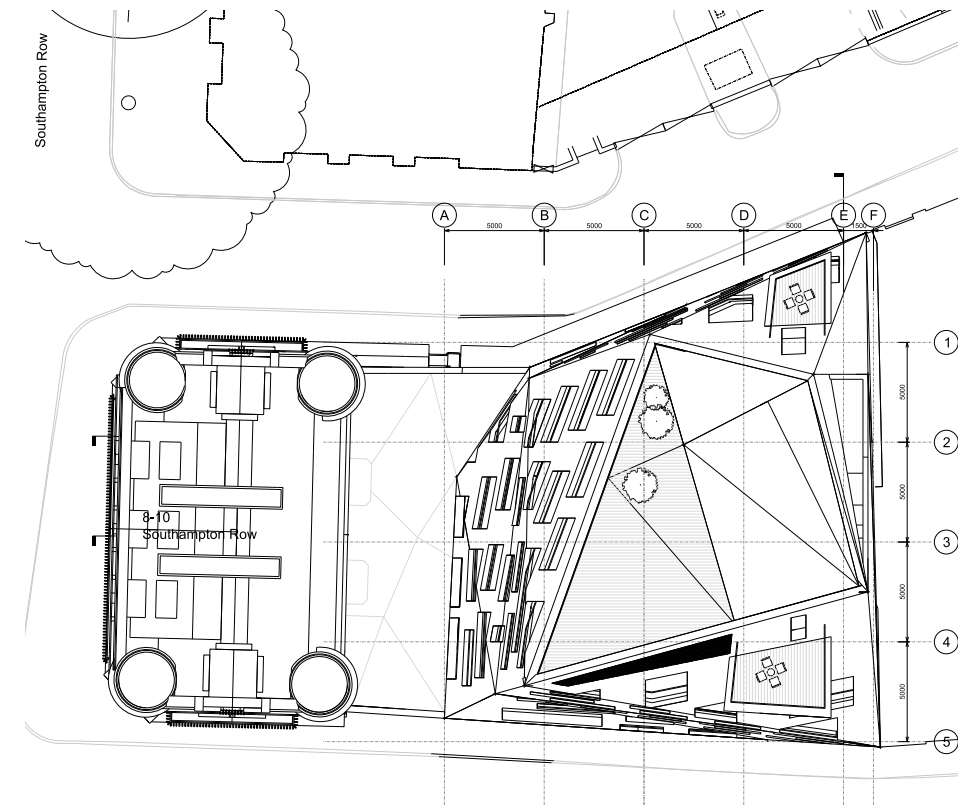
CONSENTED SCHEME, HOK FOR CROSSRAIL 2012



Ground floor plan (including headhouse)



First floor plan (above headhouse)



Roof plan

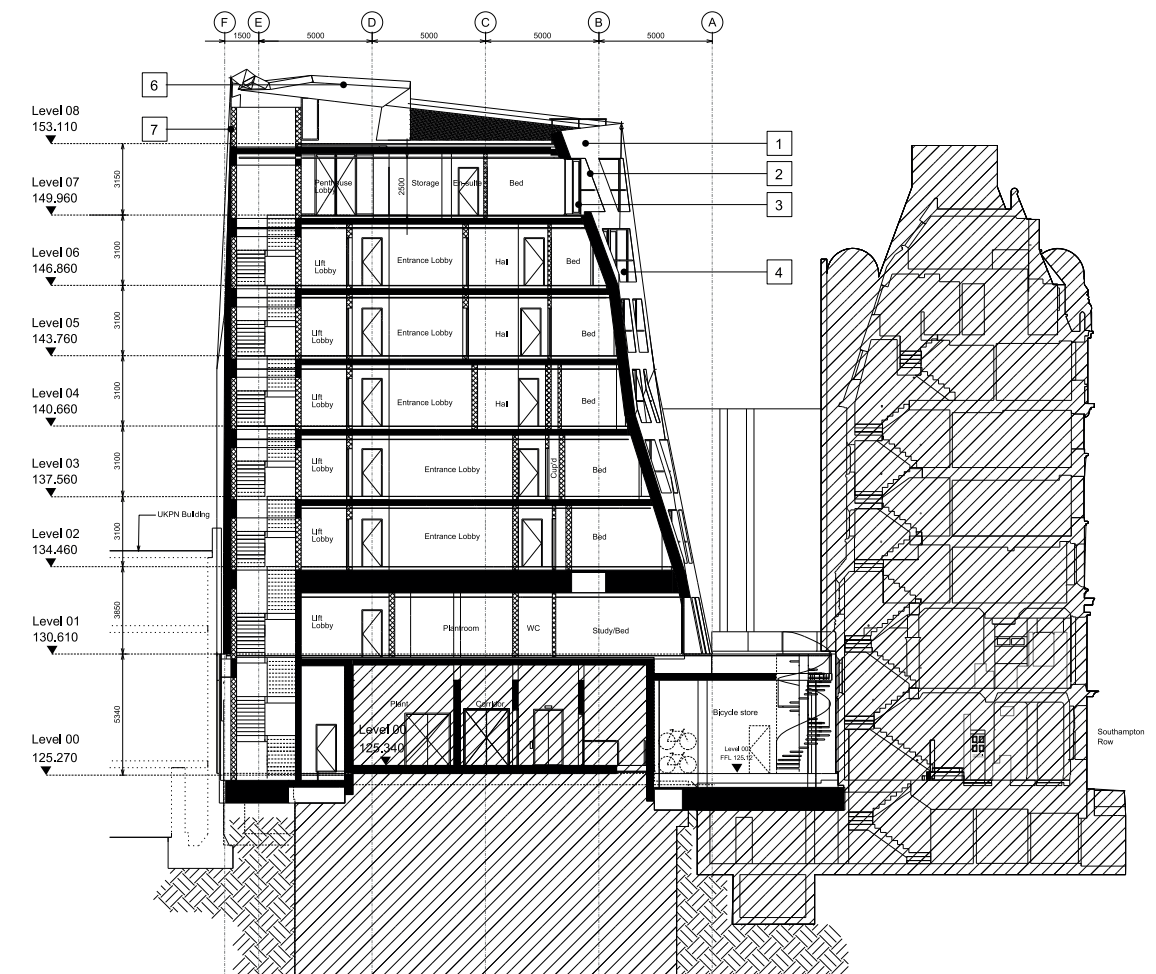
The HOK Fisher Street 2012 scheme was a residential building above the TfL headhouse. This project did not incorporate Carlisle House but used the ground floor area between Carlisle House and the TfL headhouse for cycle storage and a substation.

3.1 RECENT PROJECT HISTORY CONSENTED SCHEME, HOK FOR CROSSRAIL 2012



North elevation - Fisher Street

The distinctive sculptural massing of this apartment building was a result of protecting rights of light of Carlisle House apartments.



Cross section looking south

3.1 RECENT PROJECT HISTORY 2012 CROSSRAIL SCHEME BY HOK



2012 TfL Scheme - CGI looking east into Fisher Street

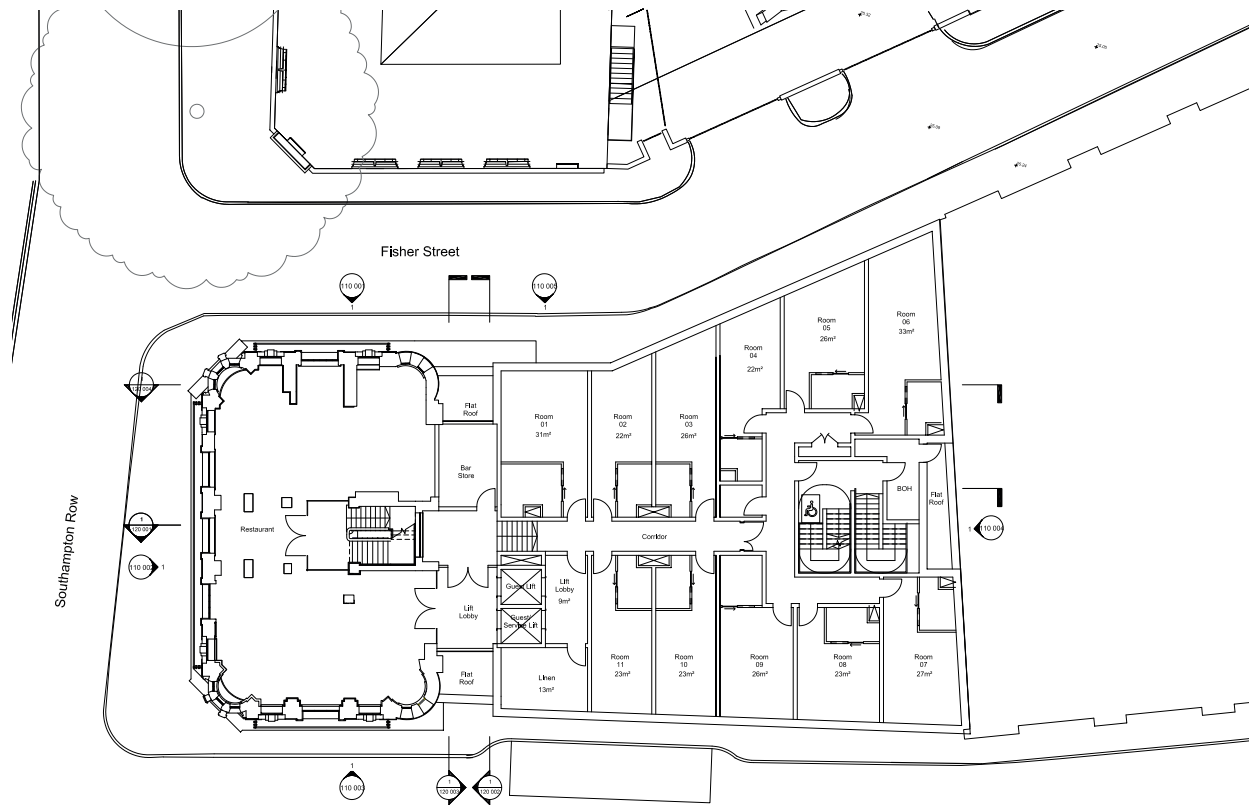


2012 TfL Scheme - CGI looking west along Fisher Street

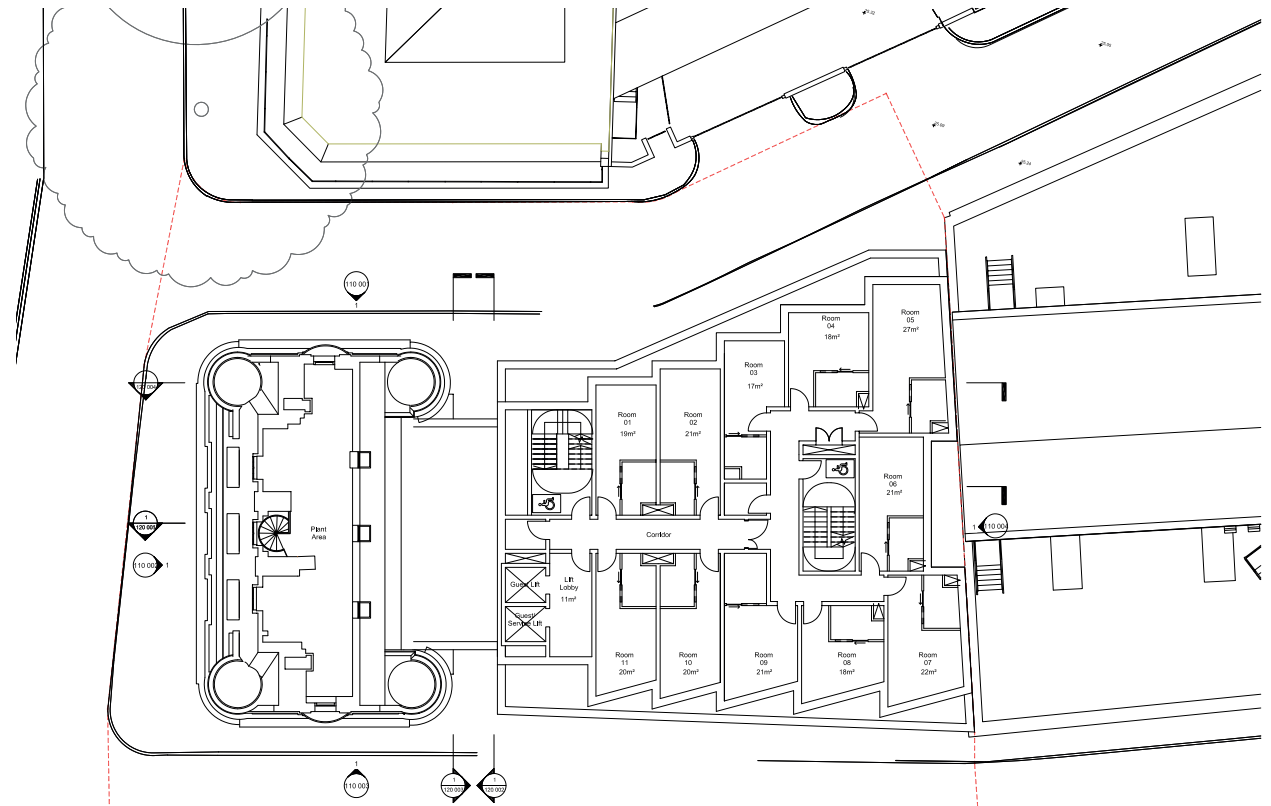


2012 TfL Scheme - CGI looking east into Catton Street

3.2 RECENT PROJECT HISTORY 2017 HOTEL SCHEME BY DEXTER MOREN ASSOCIATES



2017 Hotel Scheme - 1st Floor Plan



2017 Hotel Scheme - 7th Floor Plan