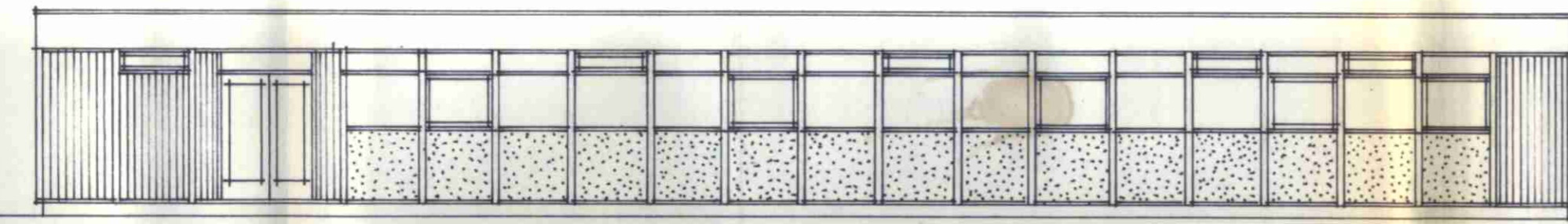


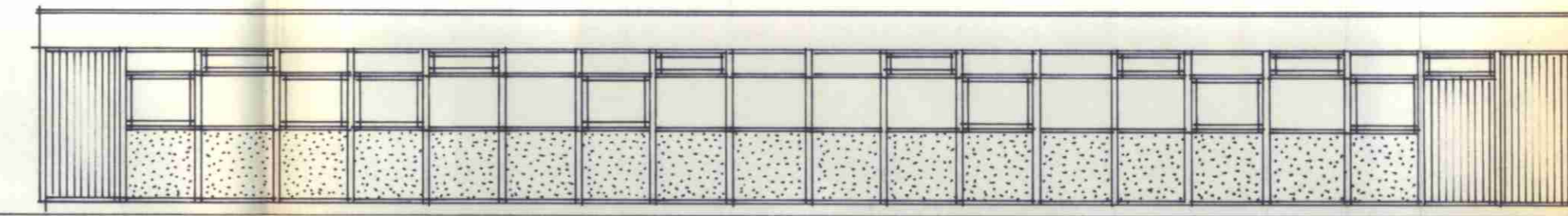
FIGURED DIMENSIONS ONLY ARE TO BE TAKEN FROM THIS DRAWING.

NOTES

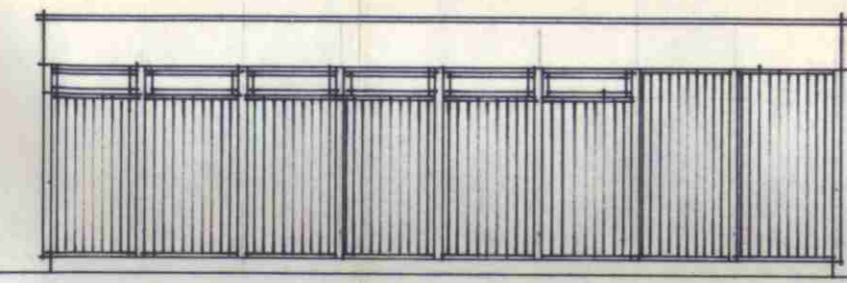
13 No 15 amp power points positions to be decided.



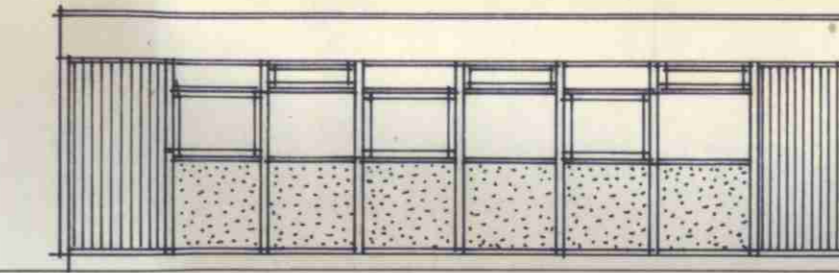
Elevation A.



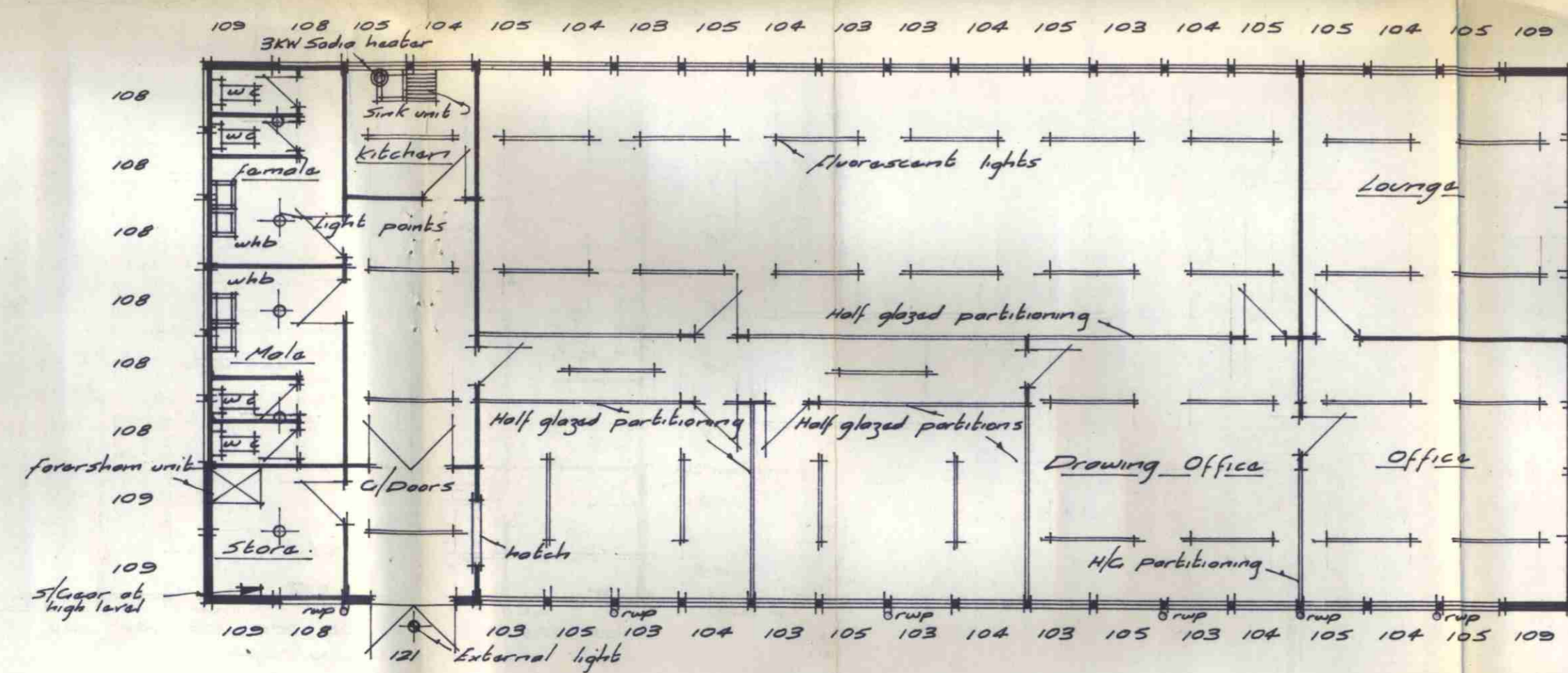
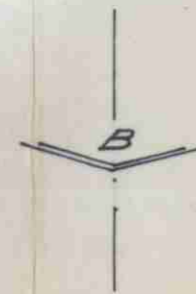
Elevation B.



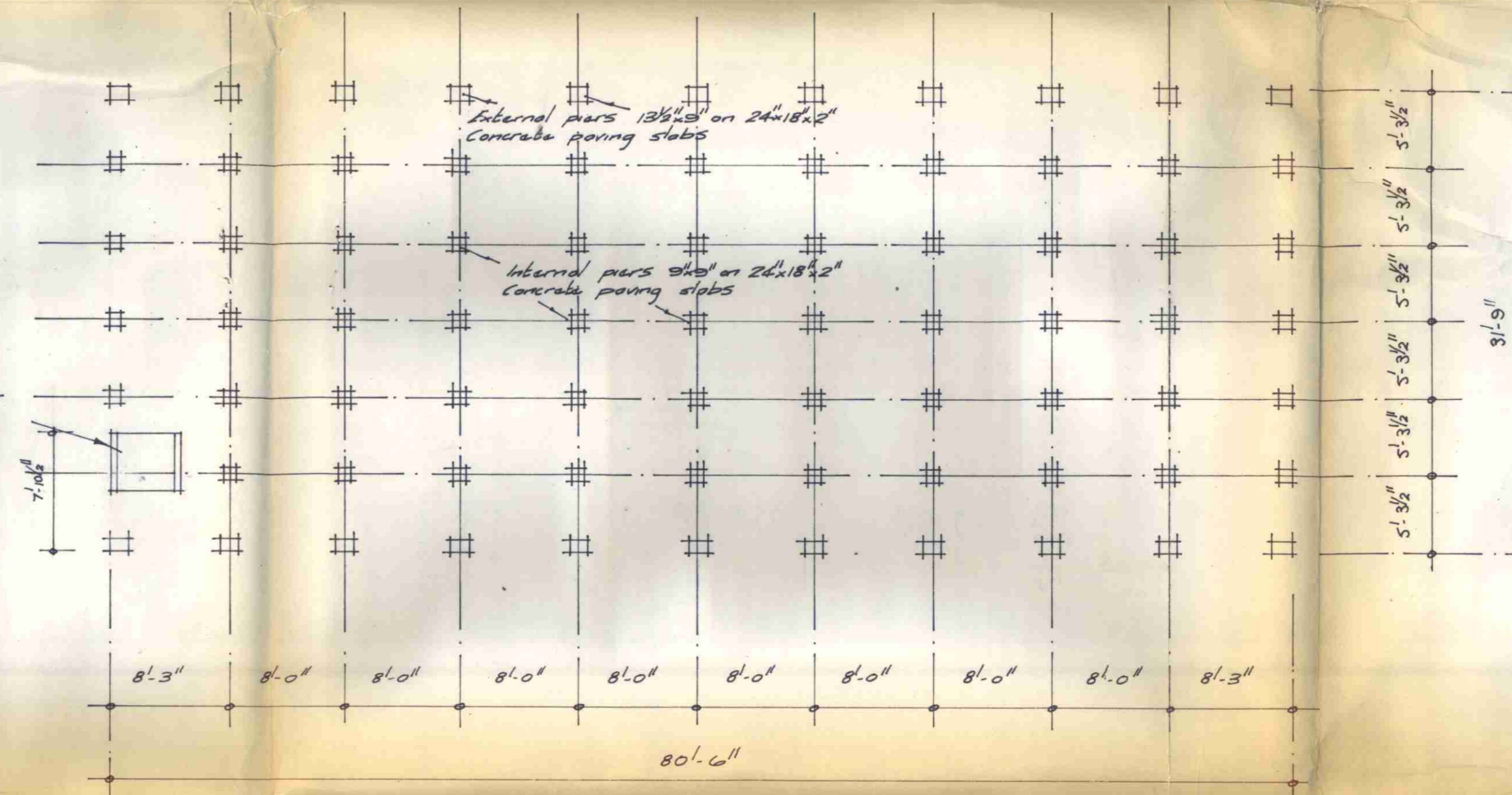
Elevation C.



Elevation D.



Concrete base for foresham unit



REVISION	DATE	INL. No.

SCALE: 1/8" = 1'-0"  
 DATE: 29/10/64  
 DRAWN BY: M.J.  
 CHECKED BY: [Signature]  
 S.4097

JOB TITLE: McWearney Smallmans Co. Ltd.

DRAWING TITLE: Proposed Office Block at B.P. Goods Yard Casp. out Carter House Road, Northwich Town, N.W.S.

DRAWING No. S.P. 4097/11

LONDON COUNTY COUNCIL  
 20549-31164  
 PROJECTS REGISTRY

SWIFTPLAN LIMITED,  
 345, RUISLIP ROAD,  
 SOUTHALL, MIDDLESEX.

32  
 20  
 3520 0'

