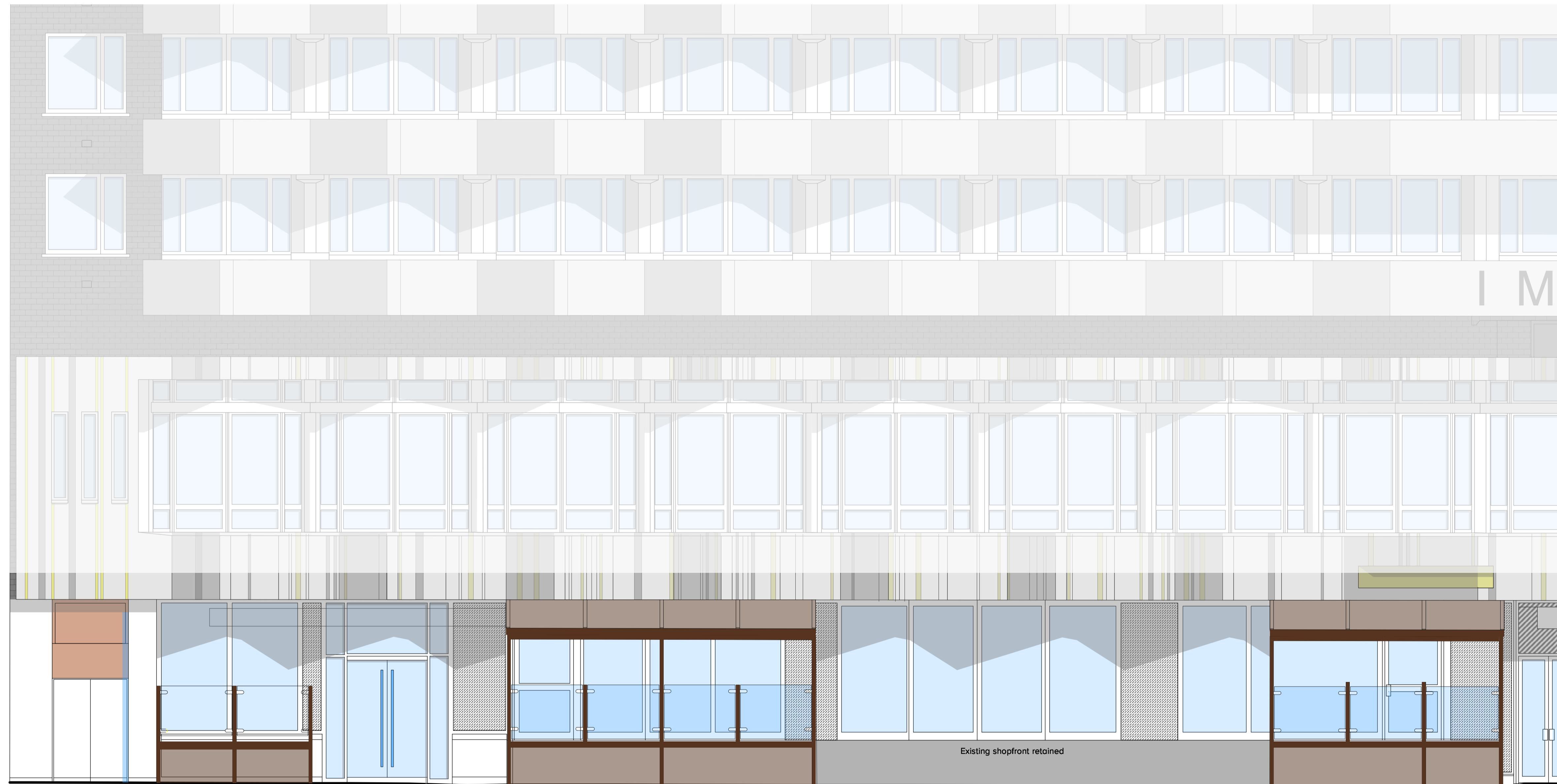


Second Floor Level
+ 34.10

Mezzanine Floor Level
+ 32.07

First Floor Level
+ 29.68

Ground Floor Level
+ 24.71

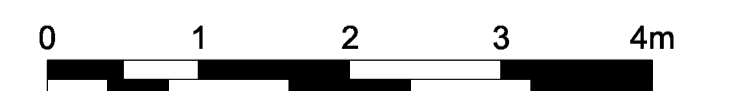


Existing shopfront retained

Location of proposed basement transformer chamber

Sources:
Survey supplied by Maltby Surveys. Original elevation data received April 2018, with updates October 2018 and March 2019.

Revisions: A LGB JLS 26/04/19 Planning Issue.



PLANNING

scale 1:50 @ A1 date 16/04/2019
drawn LGB checked JLS

1289 - P3009 - A

www.cube-designltd.co.uk

T: 01425 481999

cube_design ©