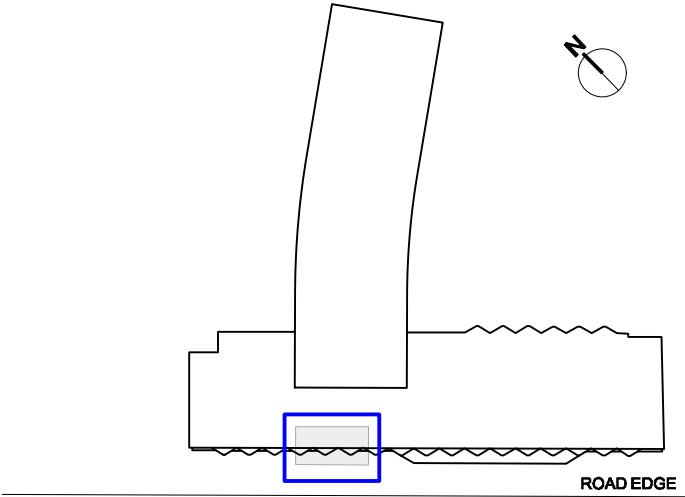
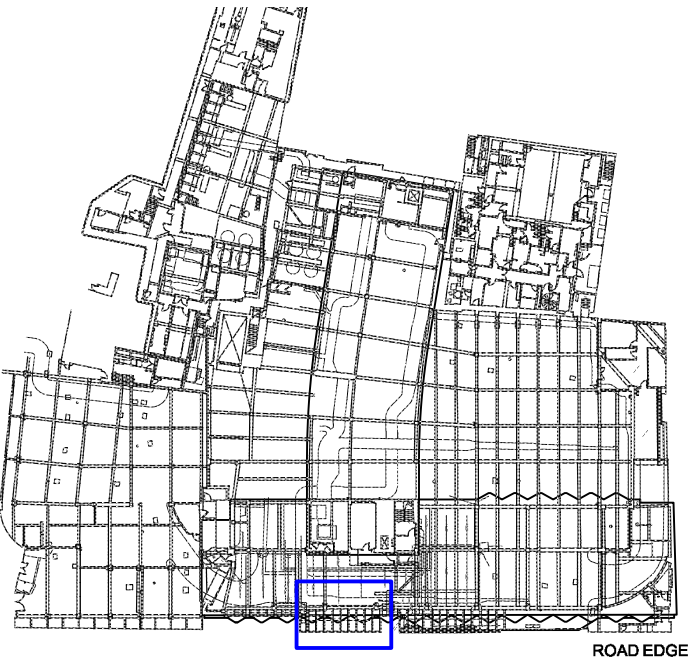


Part Basement Plan - Proposed location for new transformer chamber



Proposed location for new transformer chamber at basement level



Existing Basement Plan

**NOTE:**  
to be read in conjunction with information from UKPN and cube\_design ltd drawings P3002-P3005.

**Sources:** Surveyed plans received from Maltby Surveys Ltd October 2018. Update received March 2019. Substation information received from UKPN January 2019.

