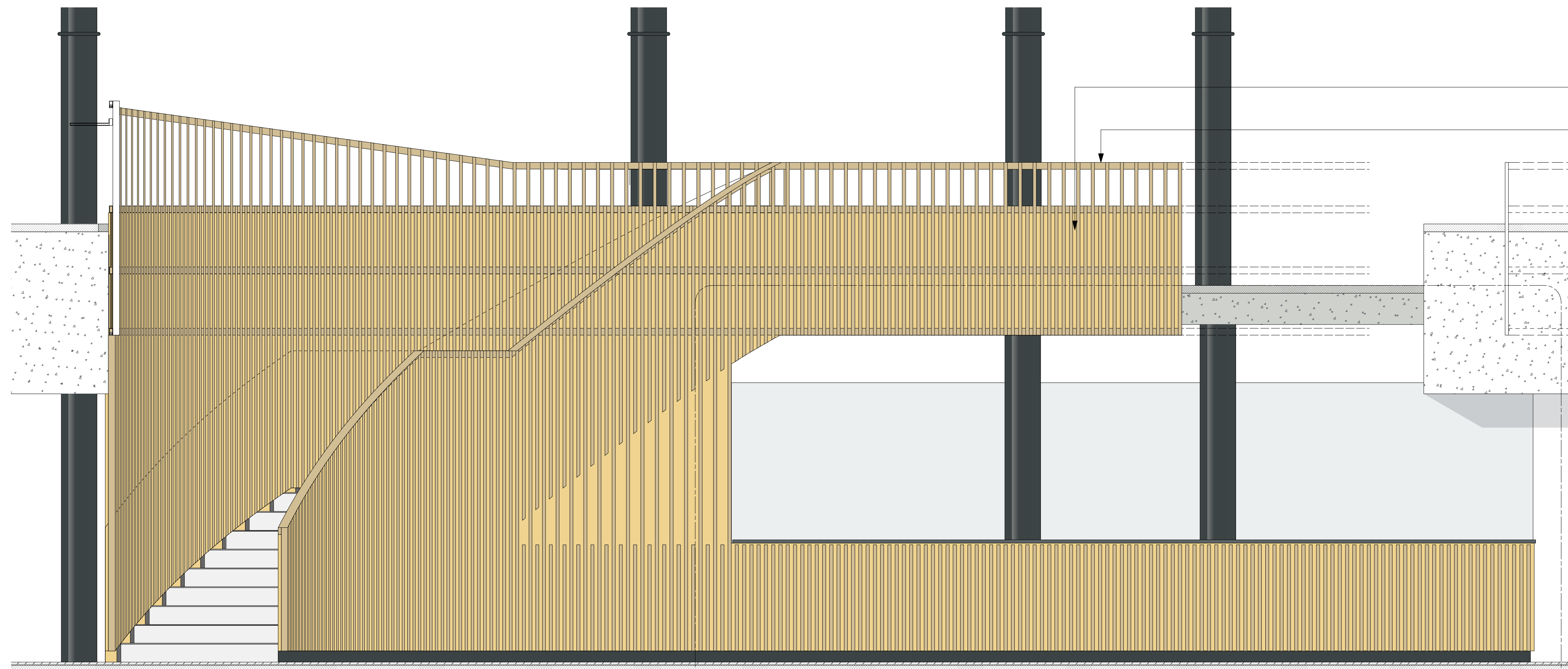


FABRIC WRAPPED
ACOUSTIC PANEL
METAL FRAME
TIMBER BATTEN BALUSTRADE



Do not scale from this drawing.
Check drawing on receipt and immediately report any discrepancies to the Architect.
Verify all dimensions and levels on site prior to construction.
The contents of this drawing are Stiff + Trevillion Architects LLP copyright and shall not be re-used without their written permission.

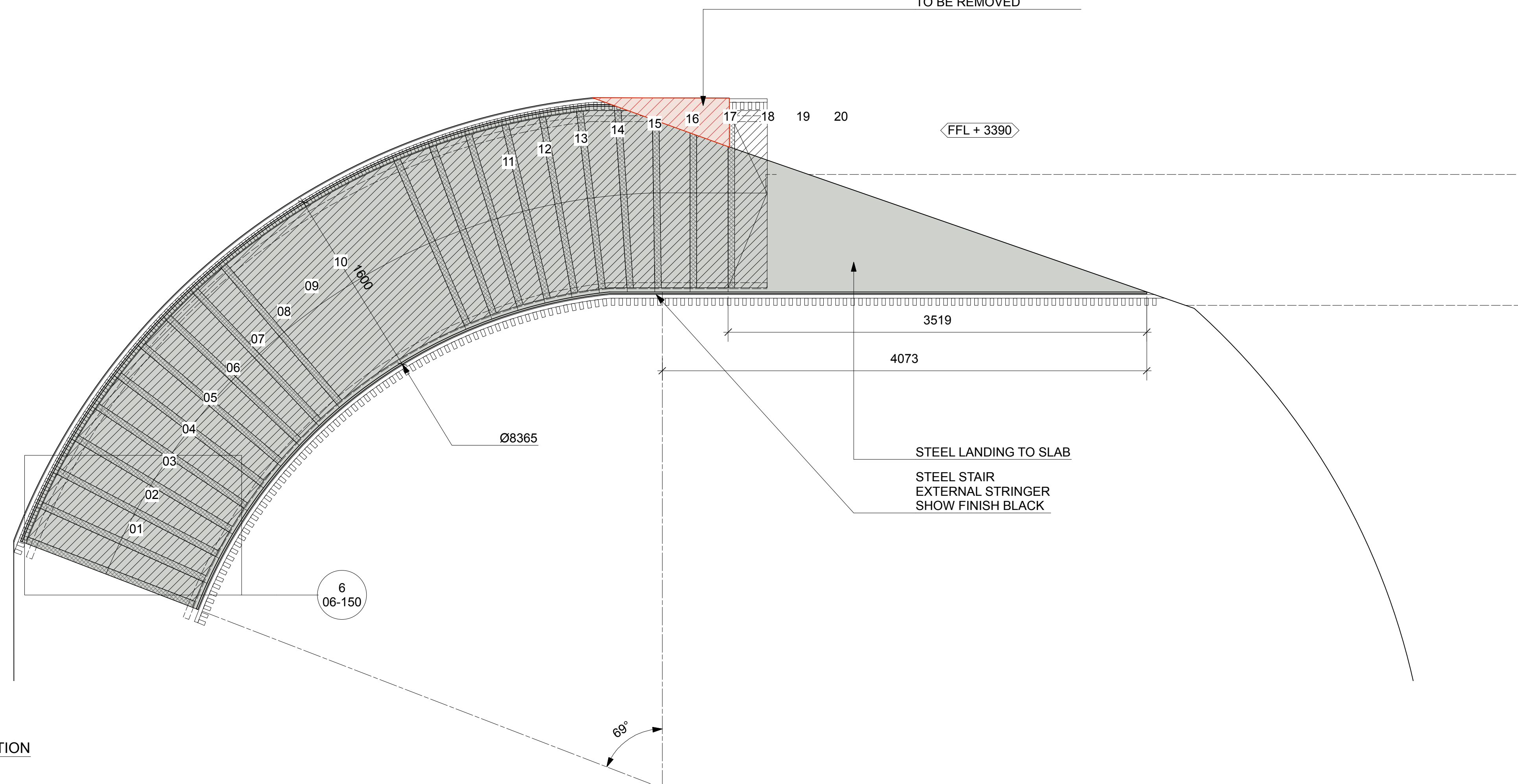
Notes

1 STAIR / ELEVATION
ST-[05]-127 Scale: 1:25

DETAIL
ST-[05]-128

1
[05]-130

AREA OF EXISTING SLAB
TO BE REMOVED



FFL + 3390

3519

4073

STEEL LANDING TO SLAB
STEEL STAIR
EXTERNAL STRINGER
SHOW FINISH BLACK

Ø8365

6
06-150

69°

Rev. Date Note Approved

Stiff + Trevillion

Stiff + Trevillion Architects Ltd
16 Woodfield Road
London W9 2BE

T +44(0)20 8960 5550
mail@stiffandtrevillion.com
www.stiffandtrevillion.com

Client

KERB
SEVEN DIALS MARKET

Project

THOMAS NEAL'S WAREHOUSE
35 EARLHAM STREET WC2H 9LD

Drawing Title

STAIR

Drawing Status

CONSTRUCTION

Date Scale @ A1 Scale @ A3
12.03.19 1:25 1:50

Project No. Drawing No. Revision
4256 ST-[05]-127 C1

2 STAIR / ELEVATION
ST-[05]-127 Scale: 1:25