

- This drawing is to be read in conjunction with all relevant architects, engineers and specialists drawings and specifications.
- Do not scale from this drawing in either paper or digital form. Use written dimensions only. To check drawing has been printed to the intended scale the above bar should be 100mm
- All post-fix anchors into masonry to be fixed with Hilti-HY270 resin UNO. Refer to details for fixing type and embedment depth
- All insulation and waterproofing details to architect's specification
- ToS levels to underside of decking UNO

6 All setting out to be confirmed on site in relation to

Column Schedule	
C1	152x152x37 UC
C3	152x152x30 UC
C4	203x203x46 UC
C5	203x203x60 UC
C6	193.7x8 CHS
CC1	400 x 225 RC

Beam Schedule	
B1	152x152x23 UC
B2	350x150x10 RHS
B3	203x203x46 UC + 150x90x10 RSA welded to web
B4	356x171x51 UB
B5	203x203x60 UC
B6	533x210x122 UB + 150x90x10 RSA welded to web
B7	152x152x37 UC
B8	203x203x86 UC + 150x90x10 RSA welded to web
B9	254 UC107 + 150x90x10 RSA welded to web
B10	254x254x89 UC + 150x90x10 RSA welded to web
B11	305x165x46 UB
B12	254x146x31 UB
B14	305x305x158 UC
B15	254x254x73 UC + 150x90x10 RSA welded to web
B16	254x146x43 UB
B17	305x165 UB46 + 150x90x10 RSA welded to web
B18	203x203x71 UC
BR1	150 x 10 MS plate cross-brace
CB1	750d x 250w WRC
CB2	350d x 600w MC
CB3	600d x 250w RC
CB4	600d x 250w WRC
CB5	400d x 200w RC
EA1	100x100x10 EA fixed to perimeter with M12 @ crs with HY270 resin UNO min 80mm embedment
EA2	150x150x12 EA fixed to perimeter

Legend			
	Proposed RC structure		C Crank
	Proposed WRC structure		S Splice
	Proposed Steel Framing		TB Thermal Break
	Connection Strengthening		BR Break in beam
	M Moment connection		
	B1 [25mm] Pre-camber		

Rev	Date	By	Eng	Amendments
C1	16.04.19	JH	GP	CONSTRUCTION ISSUE
T1	29.03.19	JH	GP	Issued for Tender

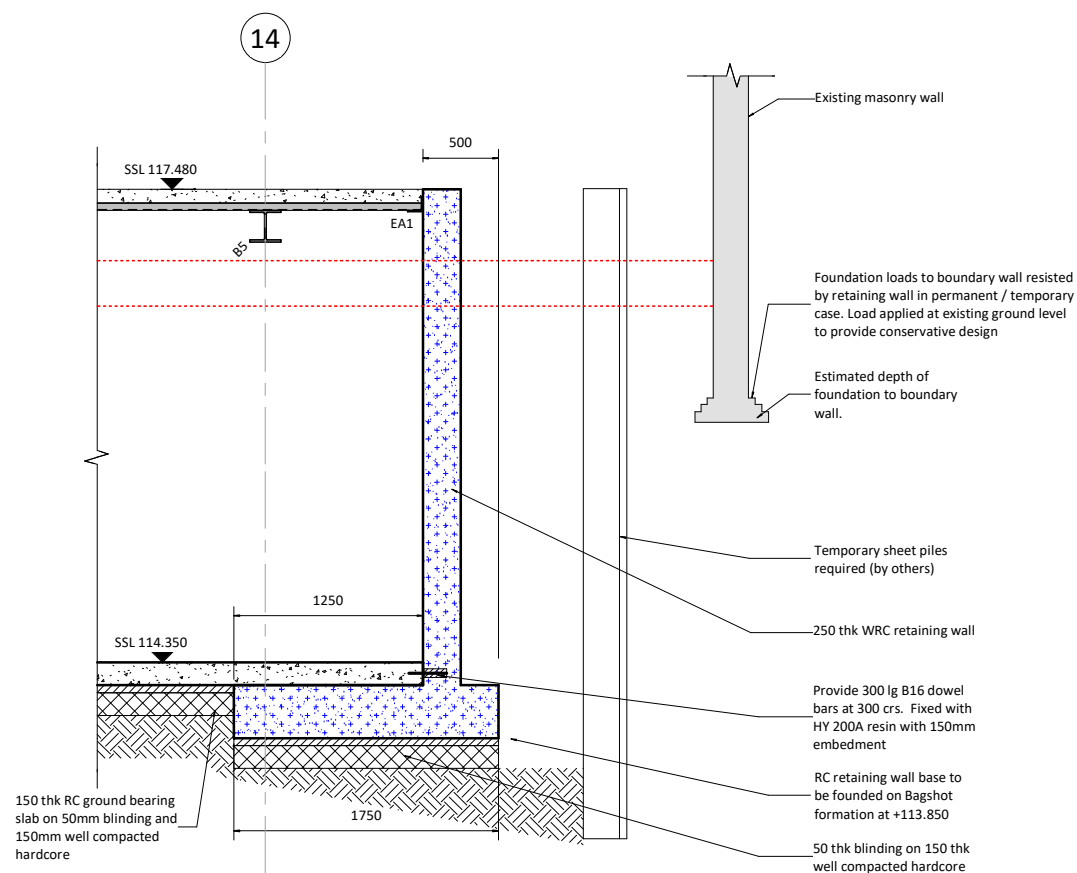
HEYNE TILLETTS STEEL STRUCTURAL ENGINEERS
hts.uk.com

Job Name
Channing Junior School N6 5JR

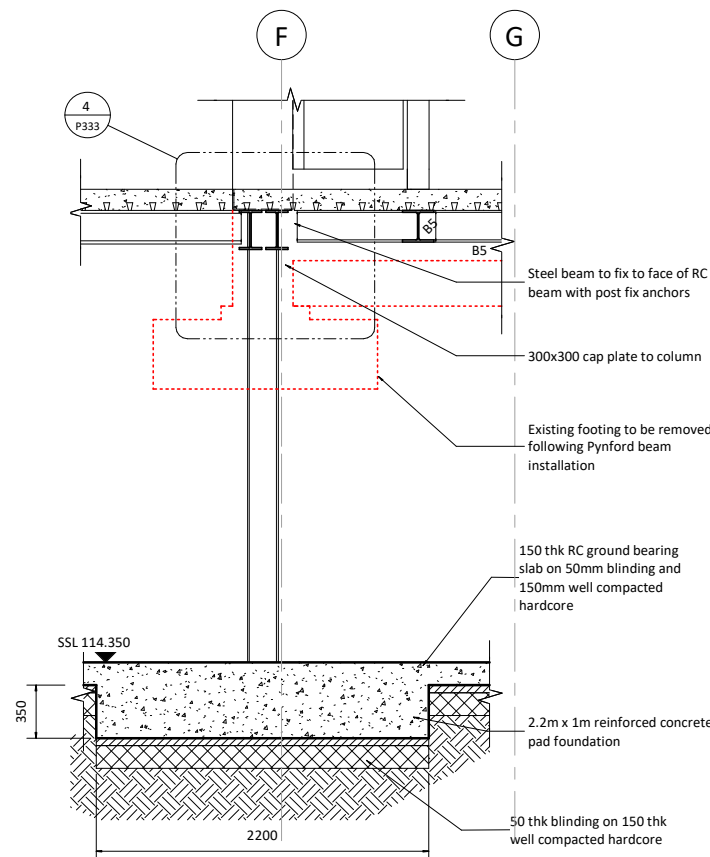
Drawing Title
Proposed East Extension Details - Phase 3 Sheet 1

Purpose of Issue **Construction** Scale at A1 **1:25**

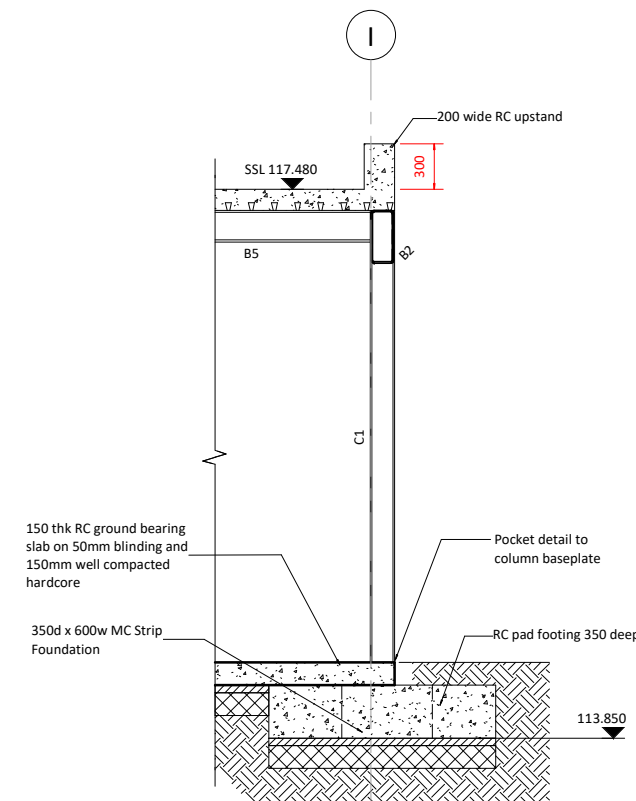
Drg No **1843/P330** Rev **C1**



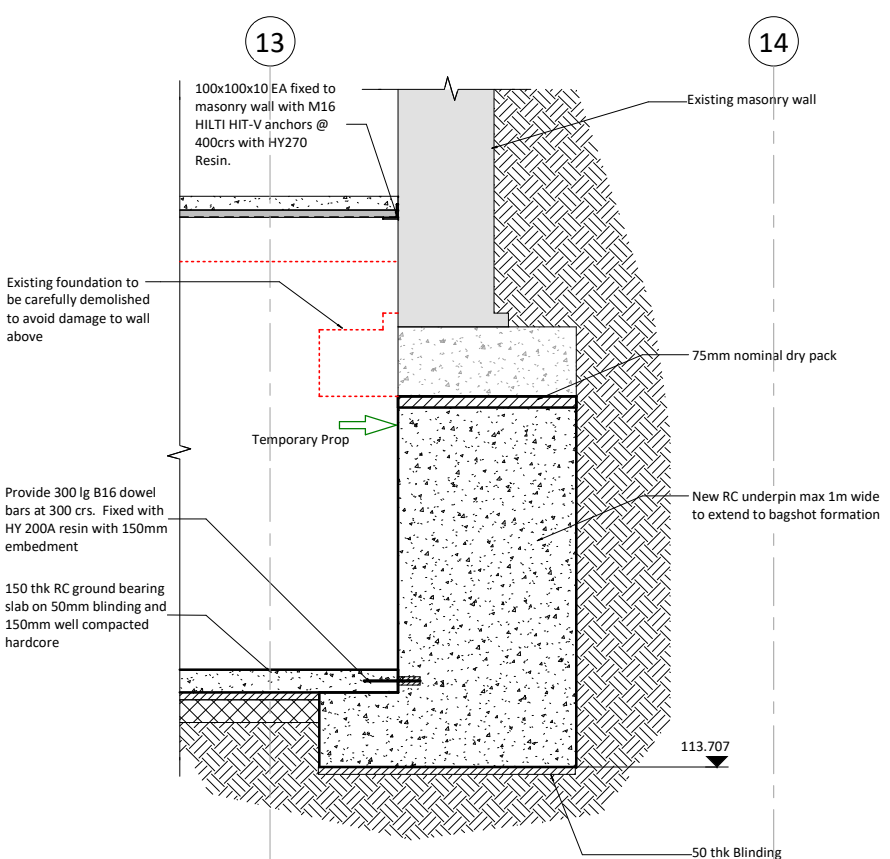
DWG P093 Section 1-1 1:25



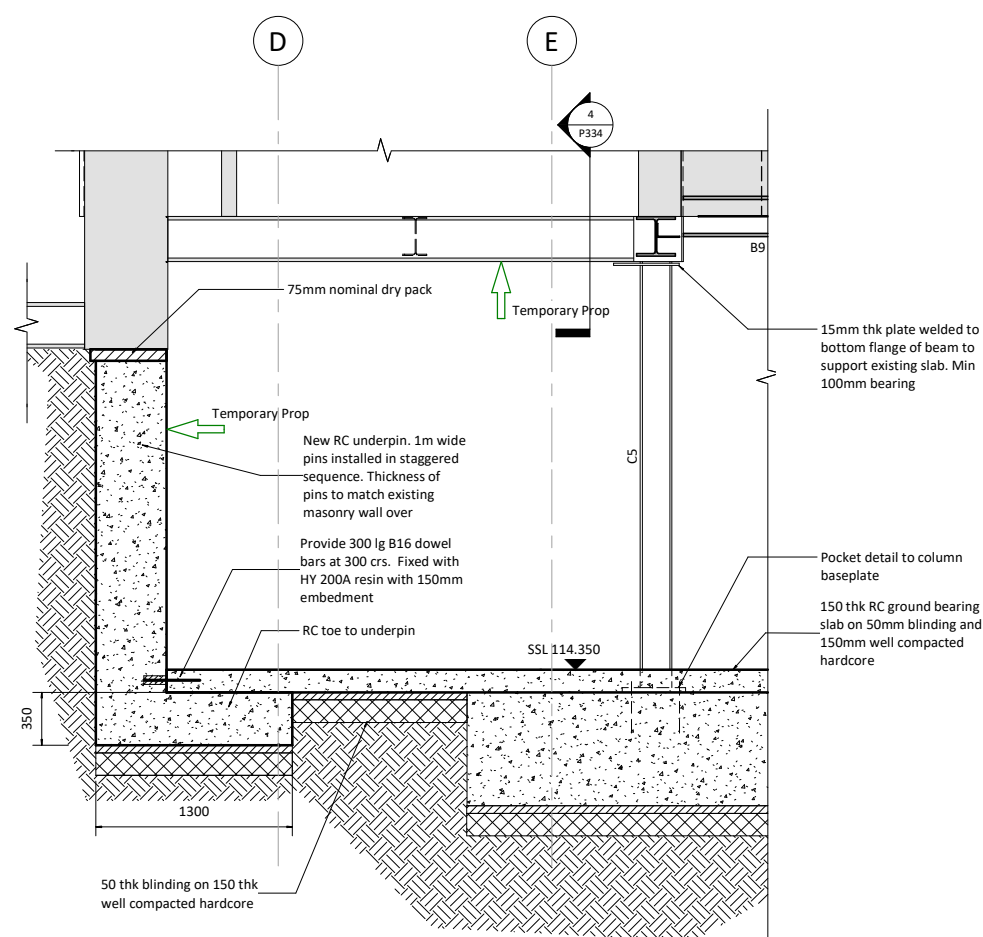
DWG P093 Section 2-2 1:25



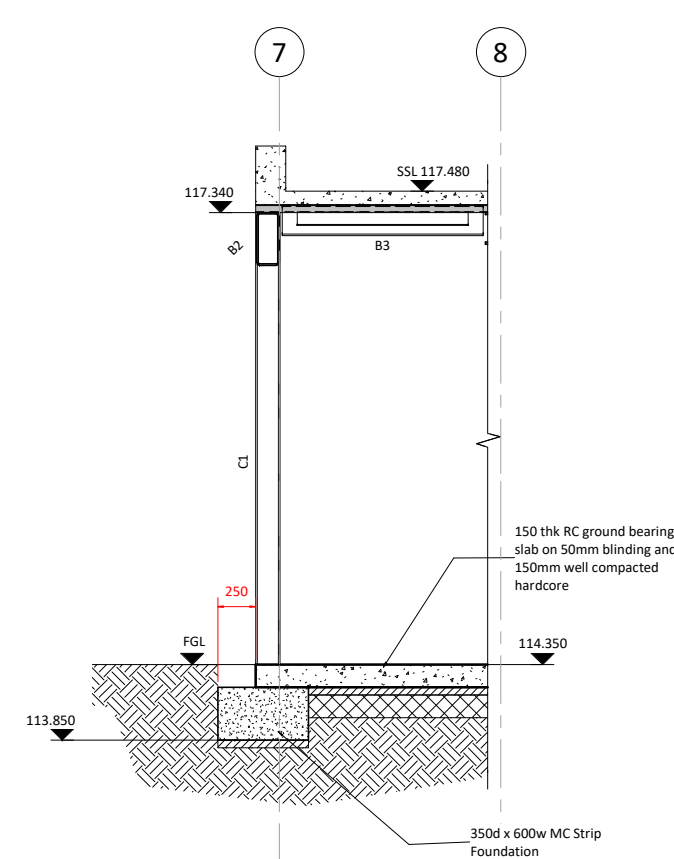
DWG P103 Section 3-3 1:25



DWG P093 Section 4-4 1:25



DWG P093 Section 5-5 1:25



DWG P093 Section 6-6 1:25