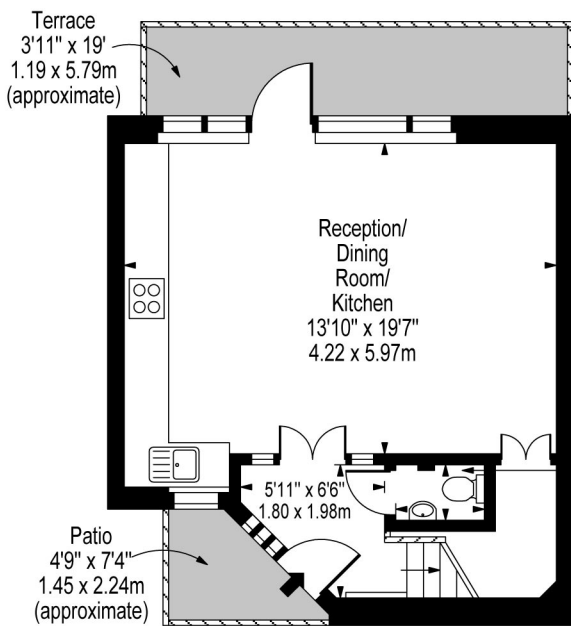
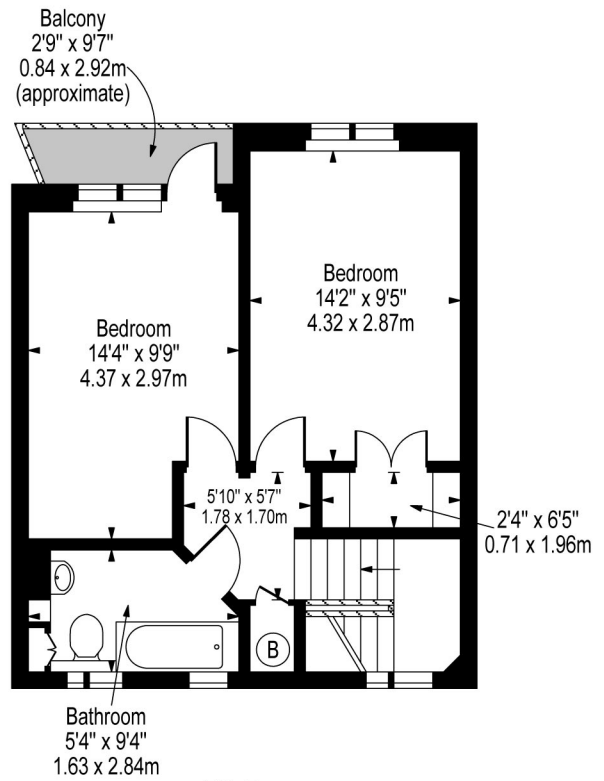


**Dudley Court,
Endell Street,
Covent Garden, WC2H 9RJ**



Fourth Floor



Fifth Floor

Approx Gross Internal Area 805 Sq Ft - 74.78 Sq M

For Illustration Purposes Only - Not To Scale
Floor Plan by www.bpmmediagroup.com
Ref. No. E53696