

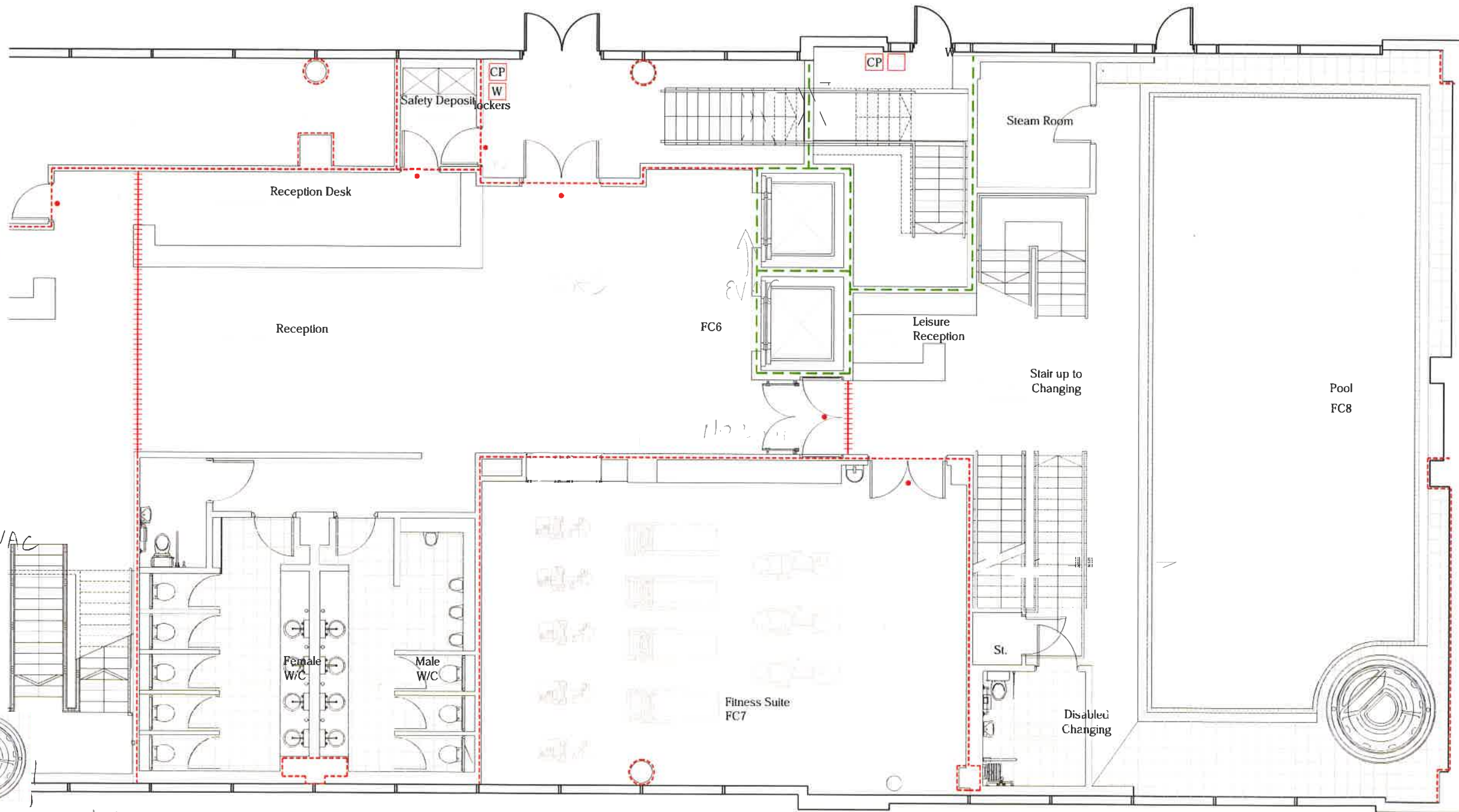
NOTE:
 Drawing reflects fire strategy indicated on
 Gibberd Architecture and Design's Fire
 Strategy drawings for the existing building.
 Main Contractor to check existing elements
 on site achieve fire rating indicated.

→ EVACUATION ROUTES

2011 GIBBERD ARCHITECTS

Do not scale from this drawing.
 If in doubt, ask.
 This drawing is the property of ica and must
 not be copied, reproduced or disclosed
 without written permission.

revisions:
 Revision A EA 22.05.13
 General notes revised.



- 1 hour fire rated O/A construction
- 1/2 hour fire rated O/A construction
- ++++ 1/2 hour fire rated O/A construction at soffit construction
- Fire Door 30min, self closing mechanism
- Fire Door 60min, self closing mechanism
- CP Fire alarm call point
- B Fire blanket
- DP 3kg dry powder extinguisher
- W 9ltr water extinguisher
- CO₂ 2kg CO₂ extinguisher
- FC6 -Hotel reception area
- FC7 -Gymnasium
- FC8 -Pool

ica Architects
 2 Orbital Court, Peel Park, East Kilbride, G74 5PH
 Tel +44(0)1355 578 070 Fax +44(0)1355 574 992
 www.icaarchitects.com

ica Architects Ltd
 registered in Scotland company no 267727

project title:
 Crowne Plaza
 Health and Fitness Suite
 Remodel

drawing title:
 Existing Ground Floor
 Fire Strategy

issue stage:
 REFER TO ISSUE SHEET

date: feb.12 drawn: VM scale @ A3: 1:100

drawing number: rev \$ on

418/EX(48)100 A

Existing Ground Floor

