

MYSTERY

EXTERIOR GRAPHIC DETAILS

# THE PULLMAN HOTEL, LONDON

FEB 2019

CAFE ENTRANCE



## 1 PROJECTING SIGN

Internally illuminated projecting sign. Fret cut blackened steel casing with off white semi-transparent acrylic behind.

All fixings to match, signage contractor to advise on fixing method.

Artwork: W572 mm x H572mm

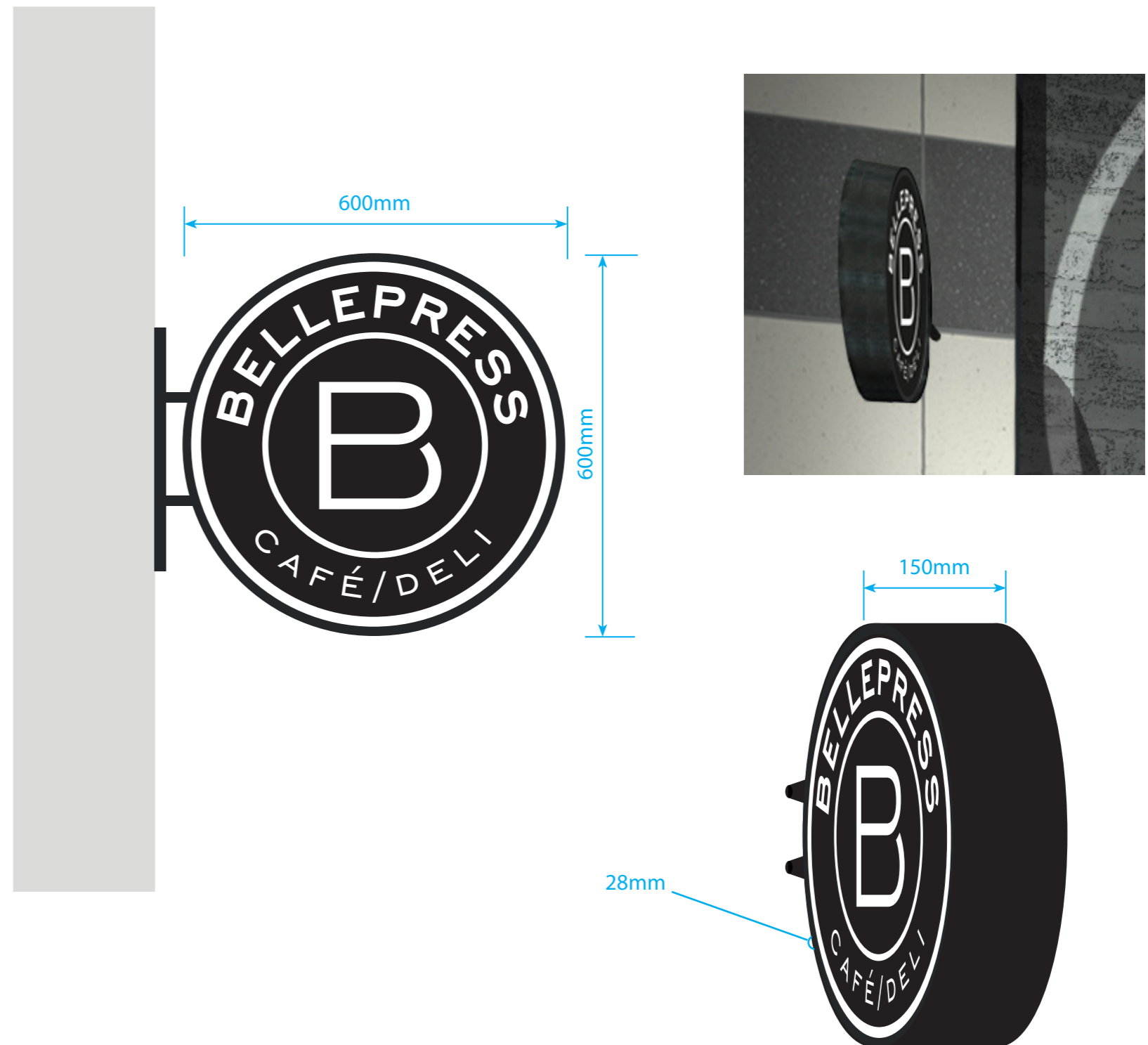
Metal surround: W600 mm x H600mm x D150mm

Materials:

Casing : Blackened steel

Acrylic Panels: Warm white semi transparent acrylic.

All samples to be approved by Mystery.



For further details see DRG. 8217\_SF02

All details to be confirmed on site prior to manufacture.



## 2 BRICK WALL LOGO

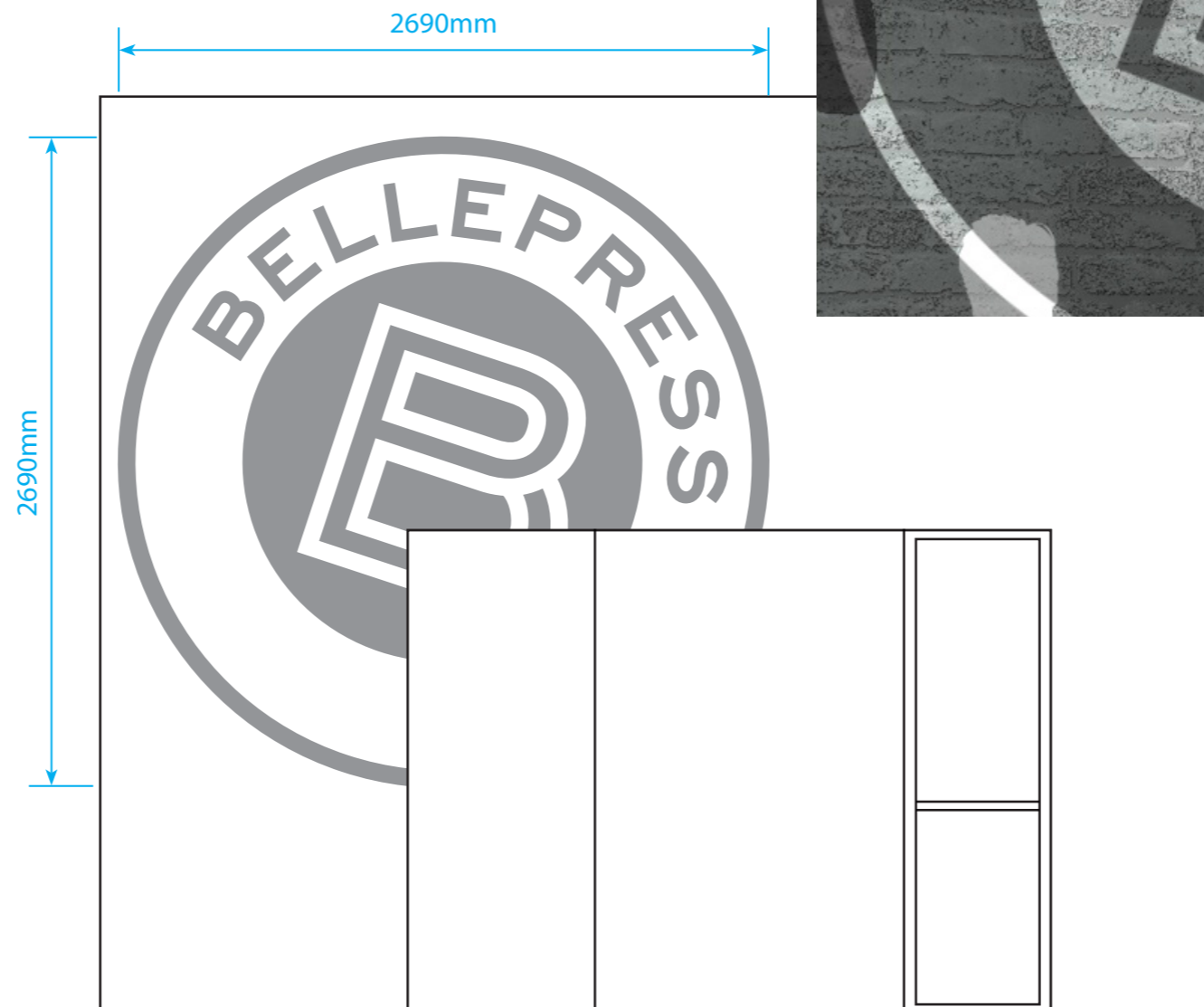
Painted logo in solid white.

See detail drawing for positioning details.

Signage contractor to advise on method.

Artwork: W2690mm x H2690mm

Please note: The entrance door must partially crop the artwork provided.



For further details see DRG. 8217\_SF02

All details to be confirmed on site prior to manufacture.



### 3 DOOR SIGNAGE

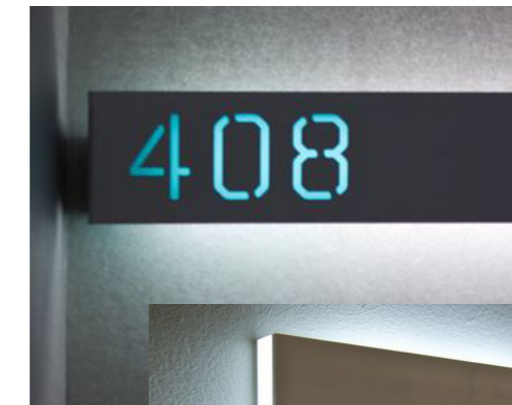
Corten steel panel with painted signage applied.

Door: W2290mm x H786mm

Sign: W530mm x H584mm

Contractor to advise on method.

Mystery to approve all samples.



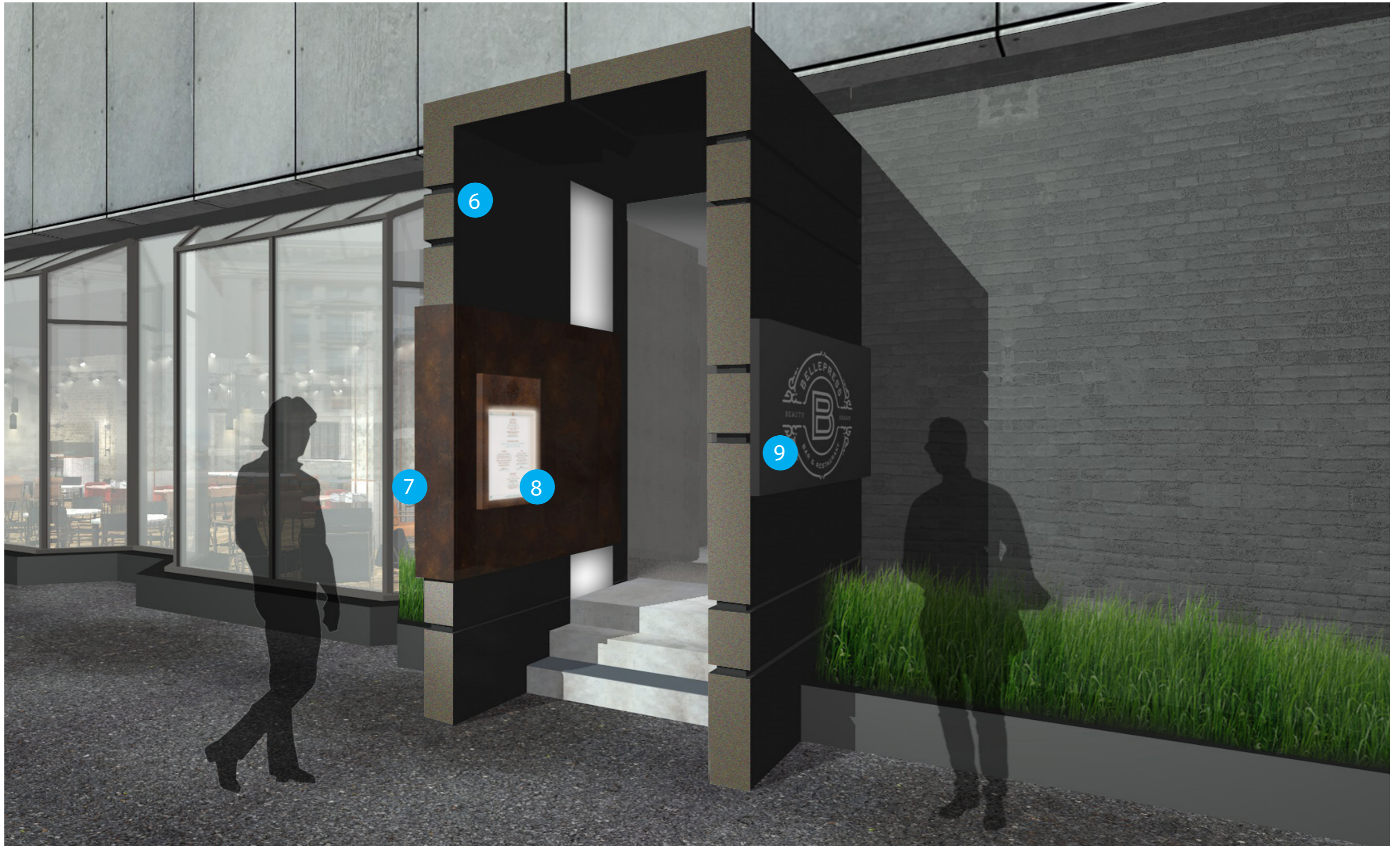
For further details see DRG. 8217\_SF02

All details to be confirmed on site prior to manufacture.



RESTAURANT ENTRANCE

BELLPRESS - RESTAURANT ENTRANCE





## 6 OVERHEAD STEEL SIGNAGE

ITEM OMITTED

All details to be confirmed on site prior to manufacture.



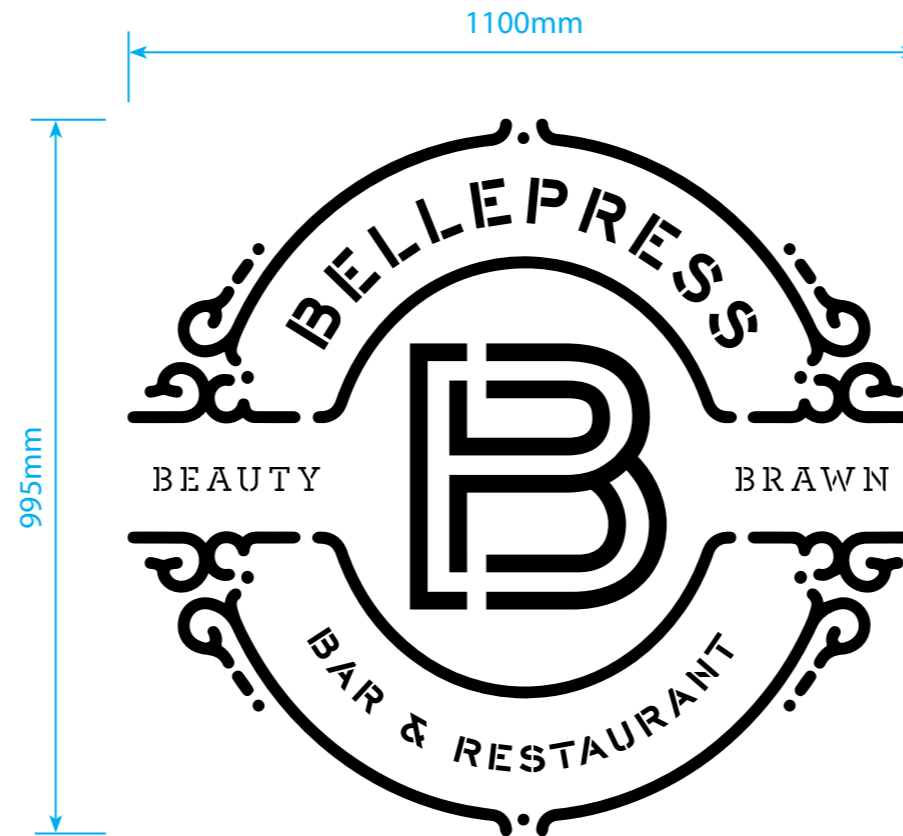
## 7 LEFT SIDE LOGO SIGN

Corten steel panel with fret cut signage and internal illumination attached to existing cladding.

Sign: W1100mm x H995mm

Warm white semi transparent acrylic panel to sit flush behind fret cut lettering with internal LED illumination behind.

Mystery to approve all samples.



For further details see DRG. 8217\_SF01

All details to be confirmed on site prior to manufacture.



## 8 MENU BOARD SIGN

Corten steel menu case with lockable access.

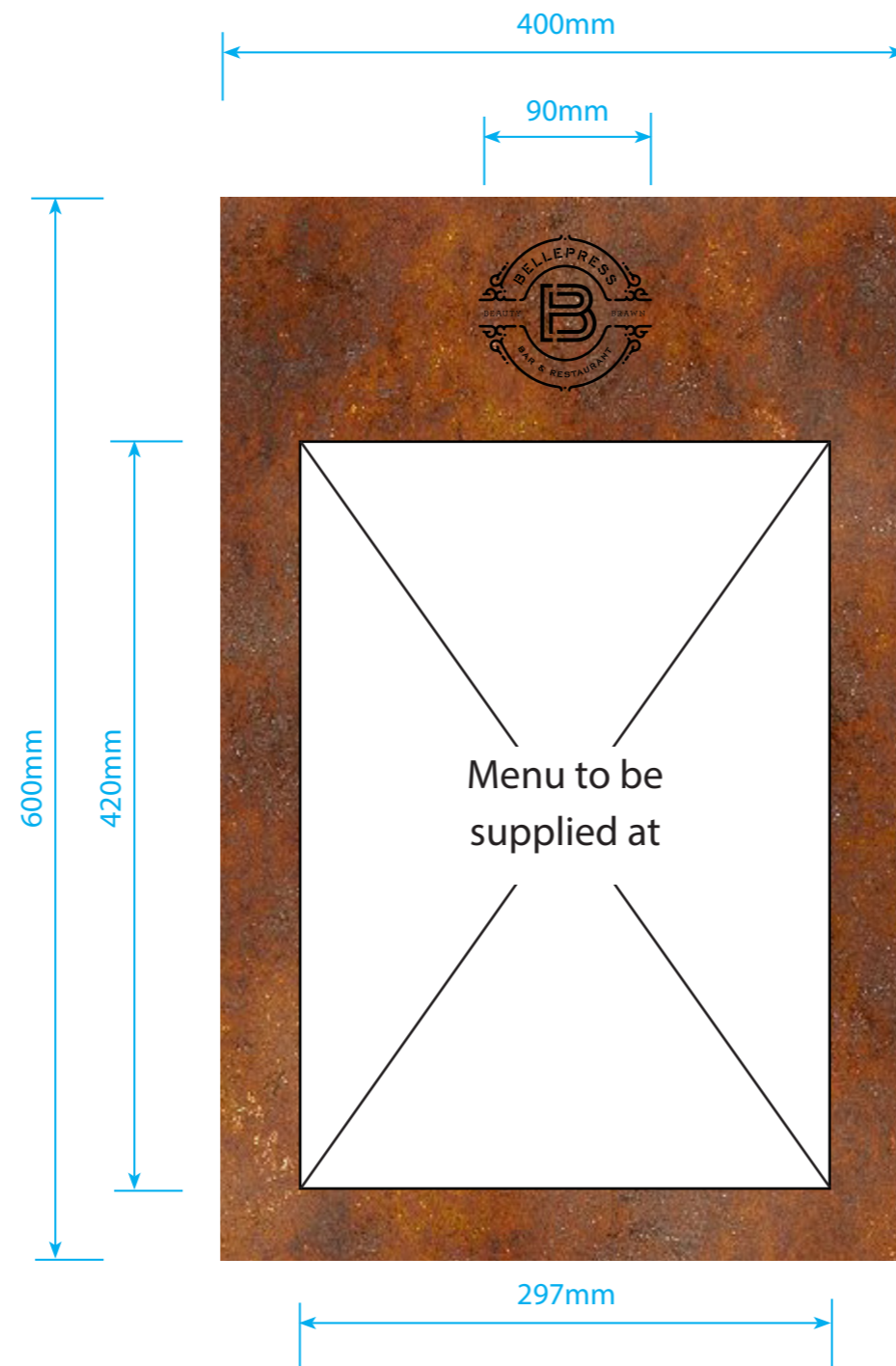
To hold A3 menu poster printed in full colour (CMYK). Artwork provided to scale 1:1.

Painted logo to top in black. Contractor to advise on method.

Artwork: W297 mm x H420mm  
Frame: W400 mm x H600mm

Case to have internal LED edge illumination.

Mystery to approve all samples.



For further details see DRG. 8217\_SF01

All details to be confirmed on site prior to manufacture.



## 8 RIGHT SIDE LOGO SIGN

New black anodized aluminium signage panel to match existing with fret cut signage to be fixed to be pinned off.

Sign: Approx 900 x 900mm

Material: Brushed Brass Effect Laminate

Mystery to approve all samples.



For further details see DRG. 8217\_SF01

All details to be confirmed on site prior to manufacture.



## LONDON



Mystery Ltd.  
33 Greenwood Place,  
London NW5 1LB, UK.



+44 (0)20 7046 6111



[design@mystery.co.uk](mailto:design@mystery.co.uk)

## LOS ANGELES



Mystery Inc.  
1450 2nd Street,  
Santa Monica,  
California 90401, USA.



+1 3104 379 029



[enquiries@mystery.xyz](mailto:enquiries@mystery.xyz)