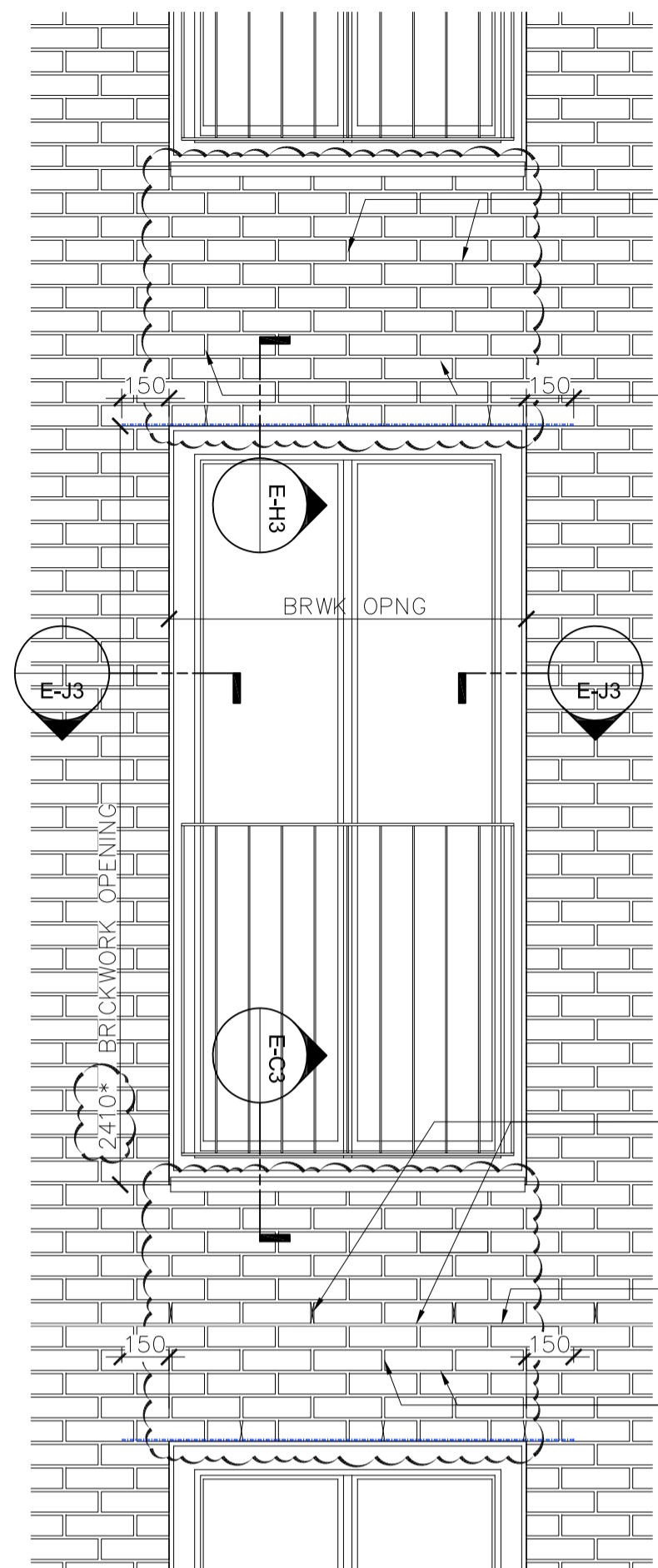


DEEP REVEAL



1 Typical Elevation
Scale 1:20

Continuous cavity tray DPC (shown blue) c/w weepholes at each floor at max. 450mm centres.

Cavity tray DPC (shown blue) above each opening c/w weepholes at max. 450mm centres.

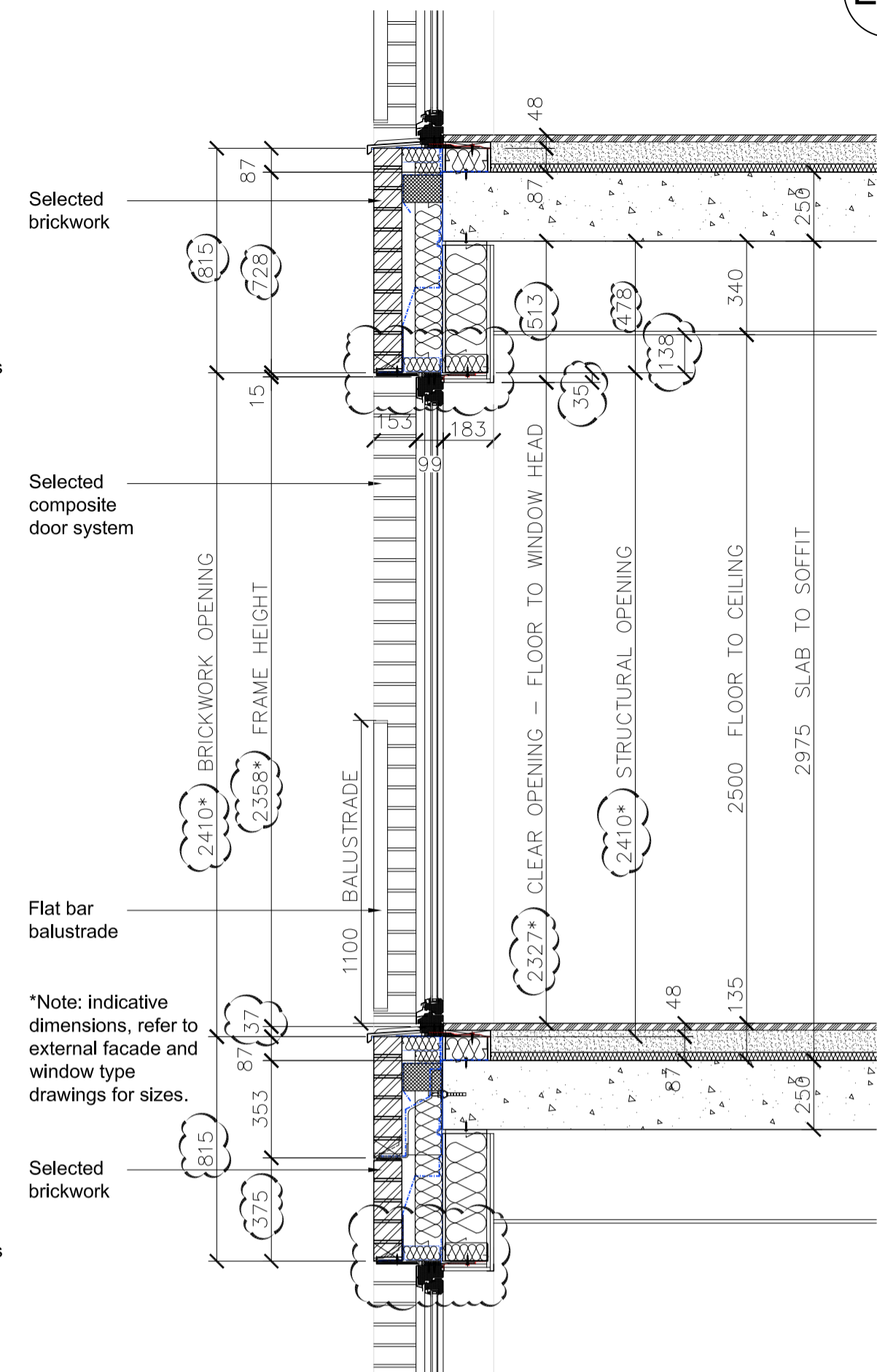
BRWK OPNG

Continuous cavity tray DPC (shown blue) c/w weepholes at each floor at max. 450mm centres.

Continuous masonry angle and soft joint at every other floor.

Cavity tray DPC (shown blue) above each opening c/w weepholes at max. 450mm centres.

2 Typical Vertical Section
Scale 1:20



E-C1 Typical Cill Detail E-C1
Scale 1:5

Selected composite door system

Primary silicone weather seal and secondary DPC seal as notes below.

Secret fixed 3mm thick PPC aluminium cill c/w stop ends and fixing straps. Colour matched to door frame.

Galvanised mild steel bearing plate bedded in silicone by door installer.

MDL Insulation 'FIREZERO' Multi-sock (or equal approved) proprietary cavity closer, providing 30 minutes integrity and 15 minutes insulation.

Selected brickwork

Proprietary cavity barrier providing, 30 minutes integrity and 15 minutes insulation.

Movement joint allowance in membranes.

50mm clear cavity

Ancon (or equal approved) proprietary masonry angle support system at every other floor c/w pistol bricks (max. 25mm overhang).

Mastic joint (min. 12mm deep) aesthetically matched to mortar c/w backing rod and compressible filler.

Single leaf lintel by specialist contractor design c/w cavity tray DPC.

MDL Insulation 'FIREZERO' Multi-sock (or equal approved) proprietary cavity closer, providing 30 minutes integrity and 15 minutes insulation.

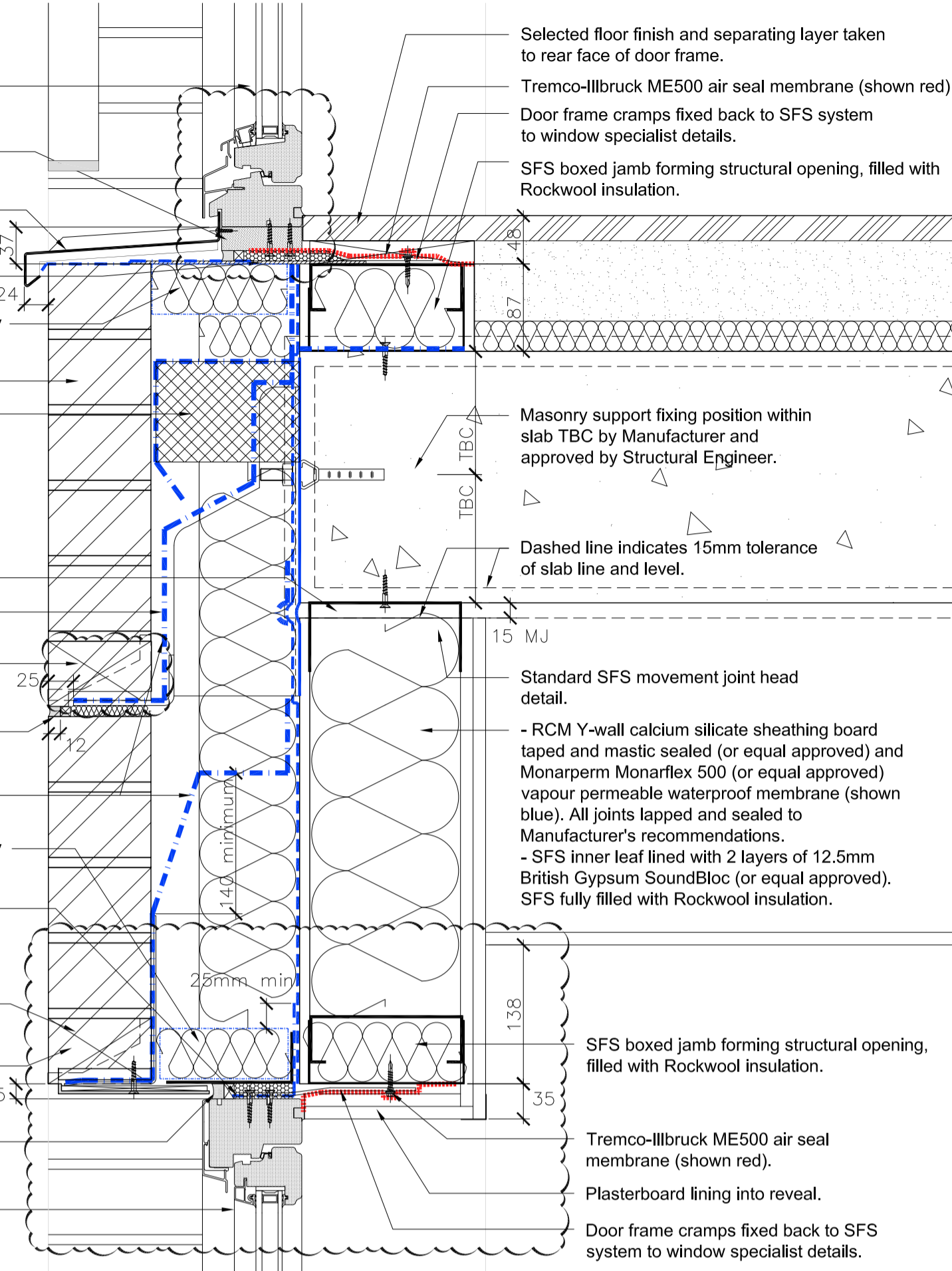
Secondary weather seal provided by DPC lapped, nailed and sealed to door frame. DPC to extend 25mm beyond vertical cavity closer DPC. Expanding foam insulation to all gaps between frame and opening.

Rytens Reetweep (or equal approved) proprietary weepholes at 450mm centres over openings. Minimum 2no. per opening.

Pistol brick, maximum 25mm opening. Anodised aluminium window head reveal flashing (colour matched to window frames), packed and secured to lintel with flush screws.

Silicone primary seal (min. 12mm deep) between frame and brickwork opening. Colour: TBC.

Selected composite door system



Door System:

Selected thermally broken hinged and glazed door to achieve U value (project weighted value).
External colour: Anodised Aluminium Anatok Umber 543, UNO. Internal frame finish - white.

Opening direction arrows are to UK standard - lines point to hinge side of window or door.

Window/door sub-contractor to propose glass to achieve specified thermal, acoustic and fire performance requirements. Note that all toughened glass is to be heat soak tested for failure due to nickel sulphide inclusions. Any laminated glass to be minimum 8.8mm thick. Glazing G values and blind requirements to be confirmed by M&E Engineer.

Glazing to critical locations to conform with Building Regulations Approved Documents Part K and Part N requirements for safe breakage to BS 6206: 1981. Critical locations are recessed balconies, terraces and ground floor glazing at 800mm above FFL for windows and 1500mm above FFL for doors and adjacent side panels.

Notes:

All dimensions to be confirmed on site prior to manufacture / order.

All dissimilar metals to be isolated.

All materials, systems and products are to be installed in full accordance with the Manufacturer's recommendations, BBA certificates or third party certificates/approval bodies.

All works to be in accordance with:
NHBC Standards (Latest Edition).
Building Regulations Approved Documents (Latest Editions).

All to comply with Fire Report and Acoustic Report.

Any fixings through waterproof membranes or EPDM's are to be fully sealed to the manufacturer recommendations.

All pre-treated timbers are to be in treated in accordance with NHBC materials standards.

Information Provision Notes:

Specialist Sub-Contractors and Installers to provide all information as necessary and as specifically requested by NHBC and Building Control for submission.

BMA cannot be held responsible for failure or delay of information provision.

Information must comply with the relevant NHBC Standards and NHBC Officer requests, Building Regulations and Building Control Officer requests, third party or Manufacturer requirements as required to gain NHBC and Building Control approval.

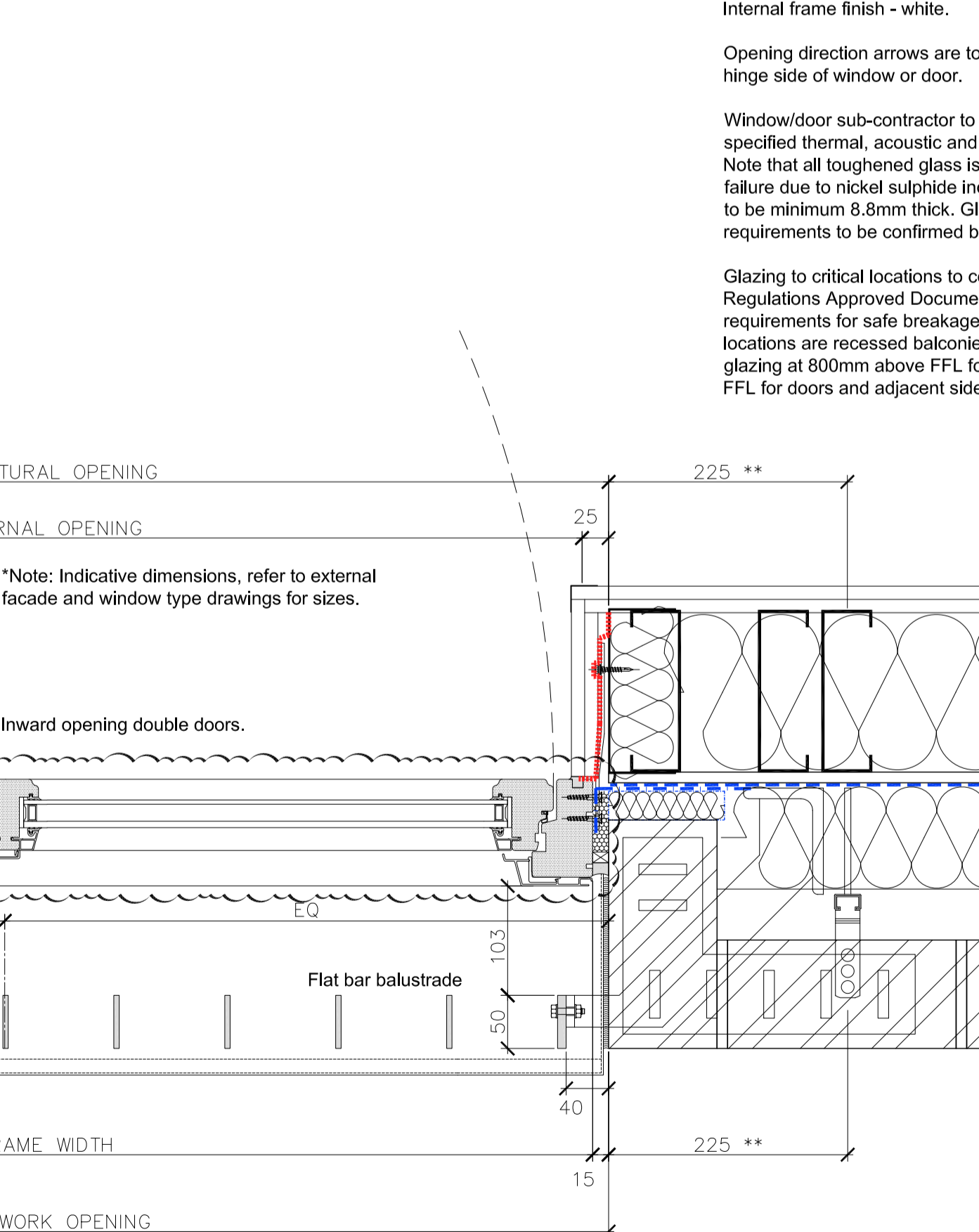
Brickwork Generally:

Selected bricks: NHBC compliant bricks and mortar to be used in all locations.

Materials:

Refer to BB7 Fire Safety Strategy Report for full details of fire strategy provisions.
External wall cladding system to meet guidance given in Approved Document B (clause 12.6 to 12.9). All materials used in the external wall construction to be Class 0 (national class).

E-H1 Typical Head Detail E-H1
Scale 1:5



Juliet Balustrade:

Refer to balustrade series drawings (934???) for full details of balustrading provision.

E-J1 Typical Jamb Detail E-J1
Scale 1:5



Reference list:
List all external references and models used, this must include the revision e.g.
MP1-AA-B1-SL-M3-A31-03001 REV A (Architectural Revit model Block 1)
MP1-BB-B1-SL-M3-A21-02002 REV C (Structural Revit model Block 1)
MP1-ZZ-B1-SL-M3-A71-05001 REV B (MEP Revit model Block 1 - Mechanical)
MP1-ZZ-B1-SL-M3-A71-06001 REV D (MEP Revit model Block 1 - Electrical)
4607-TG-REV B (Topological Survey)

Facade and Window Drawing Refs:

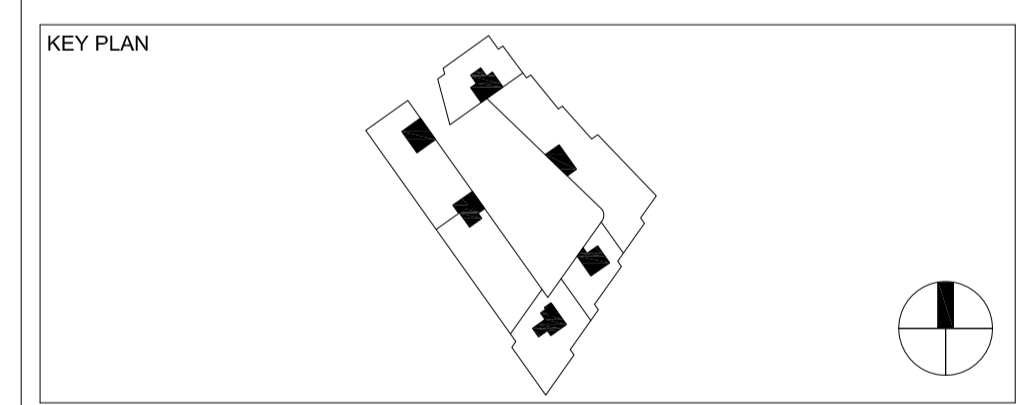
- Type A's - Single opening window without fanlight - L20/480A
MP1-BMA-ALL-SL-ELV-A31-921060 - Type details
MP1-BMA-ALL-SL-ELV-A31-931065 - MVHR details
 - Type B's - Single opening window with fanlight - L20/480A
MP1-BMA-ALL-SL-ELV-A31-921061 - Type details
MP1-BMA-ALL-SL-ELV-A31-931065 - MVHR details
 - Type C's - Fixed window without fanlight - L20/481A
MP1-BMA-ALL-SL-ELV-A31-921060 - Type details
MP1-BMA-ALL-SL-ELV-A31-931065 - MVHR details
 - Type D's - Fixed window with fanlight - L20/481A
MP1-BMA-ALL-SL-ELV-A31-921061 - Type details
MP1-BMA-ALL-SL-ELV-A31-931065 - MVHR details
 - Type E's - Double opening or faux double window without fanlight - L20/480A
MP1-BMA-ALL-SL-ELV-A31-921062 - Type details
MP1-BMA-ALL-SL-ELV-A31-931066 - MVHR details
 - Type F's - Double opening or faux double window with fanlight - L20/480A
MP1-BMA-ALL-SL-ELV-A31-921063 - Type details
MP1-BMA-ALL-SL-ELV-A31-931066 - MVHR details
- DOOR TYPES SUMMARY:**
Type G's - Single, double or assembly with low access door threshold without fanlight
Type H's - Single, double or assembly with low access door threshold with fanlight
Sliding Doors - L20/520
Sliding Folding Doors - L20/530
- Refer to the following plan set out drawings:
MP1-BMA-ALL-LG-GA-A31-921001 - Lower Ground
MP1-BMA-ALL-UG-GA-A31-921001 - Upper Ground
MP1-BMA-ALL-01-GA-A31-921003 - Level 1
MP1-BMA-ALL-02-GA-A31-921004 - Level 2
MP1-BMA-ALL-03-GA-A31-921005 - Level 3
MP1-BMA-ALL-04-GA-A31-921006 - Level 4
MP1-BMA-ALL-05-GA-A31-921007 - Level 5
MP1-BMA-ALL-06-GA-A31-921008 - Level 6
MP1-BMA-ALL-07-GA-A31-921009 - Level 7
MP1-BMA-ALL-08-GA-A31-921010 - Level 8
MP1-BMA-ALL-09-GA-A31-921011 - Level 9
MP1-BMA-ALL-10-GA-A31-921012 - Level 10
MP1-BMA-ALL-11-GA-A31-921013 - Level 11
MP1-BMA-ALL-12-GA-A31-921014 - Level 12
MP1-BMA-ALL-13-GA-A31-921015 - Level 13
- MP1-BMA-ALL-SL-ELV-A31-921050 - Phoenix Place elevation
MP1-BMA-ALL-SL-ELV-A31-921051 - Courtyard East elevation
MP1-BMA-ALL-SL-ELV-A31-921052 - Mount Pleasant elevation
MP1-BMA-ALL-SL-ELV-A31-921053 - Courtyard South elevation
MP1-BMA-ALL-SL-ELV-A31-921054 - Gough Street elevation
MP1-BMA-ALL-SL-ELV-A31-921055 - Courtyard West elevation
MP1-BMA-ALL-SL-ELV-A31-921056 - The Walk elevation
MP1-BMA-ALL-SL-ELV-A31-921057 - Courtyard North elevation

C	08-04-19	Reveal amended to 70mm, heights adjusted				
B	08-03-19	Drawing title amended, BYUK comments incorporated.				
A	19-10-18	First Issue				
Rev	DATE	REVISION HISTORY	Dsg	Drw	Chk	App

CLIENT LOGO

Taylor Wimpey
Central London

www.bouygues-uk.com



ORIGINATOR

BroadwayMalyan^{BM}
2 Castle Street, Castlefield, Manchester, M3 4LZ.
0161 819 2277

DRAWING TITLE

Mount Pleasant Phase 1
Deep Reveal Window / Door Inward
Opening c/w Juliet Balcony Details
(Without Fanlight)

Designed by	BMA	Signature	Date
Drawn by	JT		
Checked	SMC		
Approved	SMC		

SCALE	@ A1	BIM FILE NAME
1:5/20		
FIRST ISSUE DATE	19.10.18	PROPOSED STATUS
		Review

PROJECT	ISSUER	AREA	LEVEL	TYPE	TRADE	SEQUENCE	REV
MP1	BMA	ALL	SL	DET	A31	921062	C