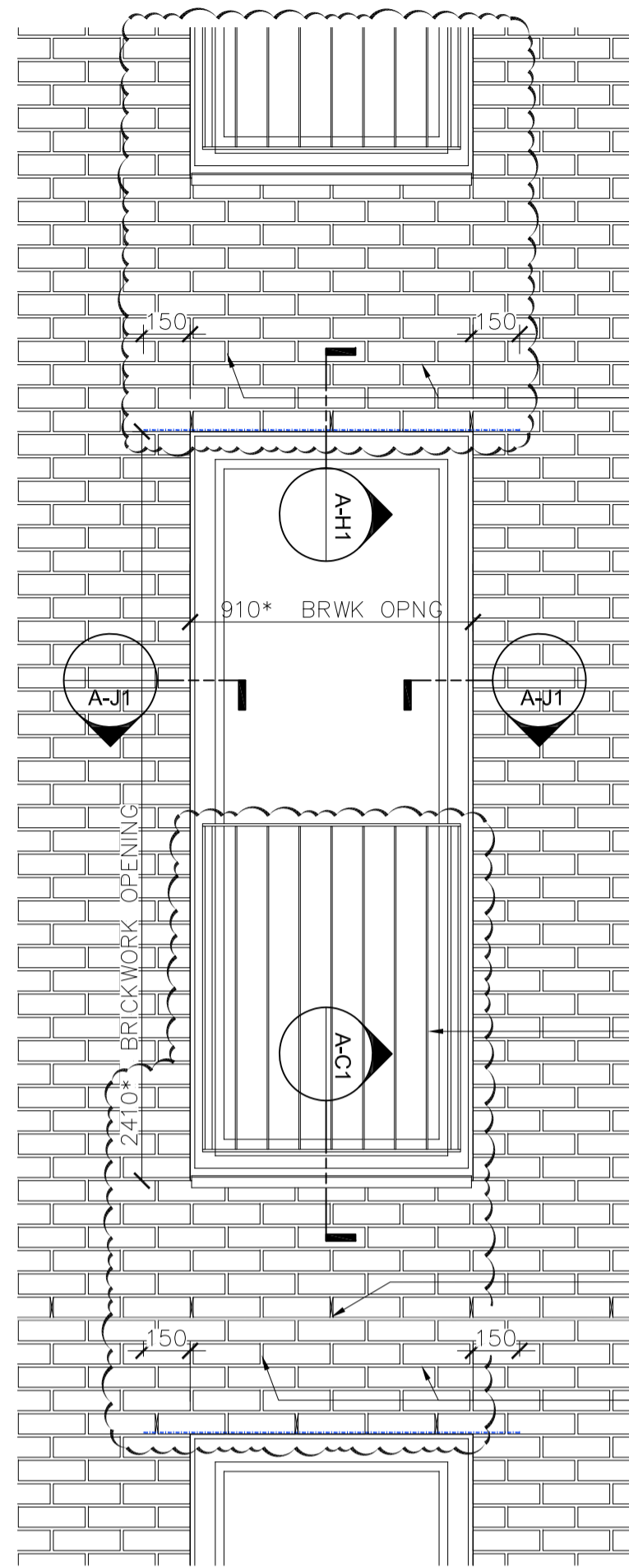


SHALLOW REVEAL



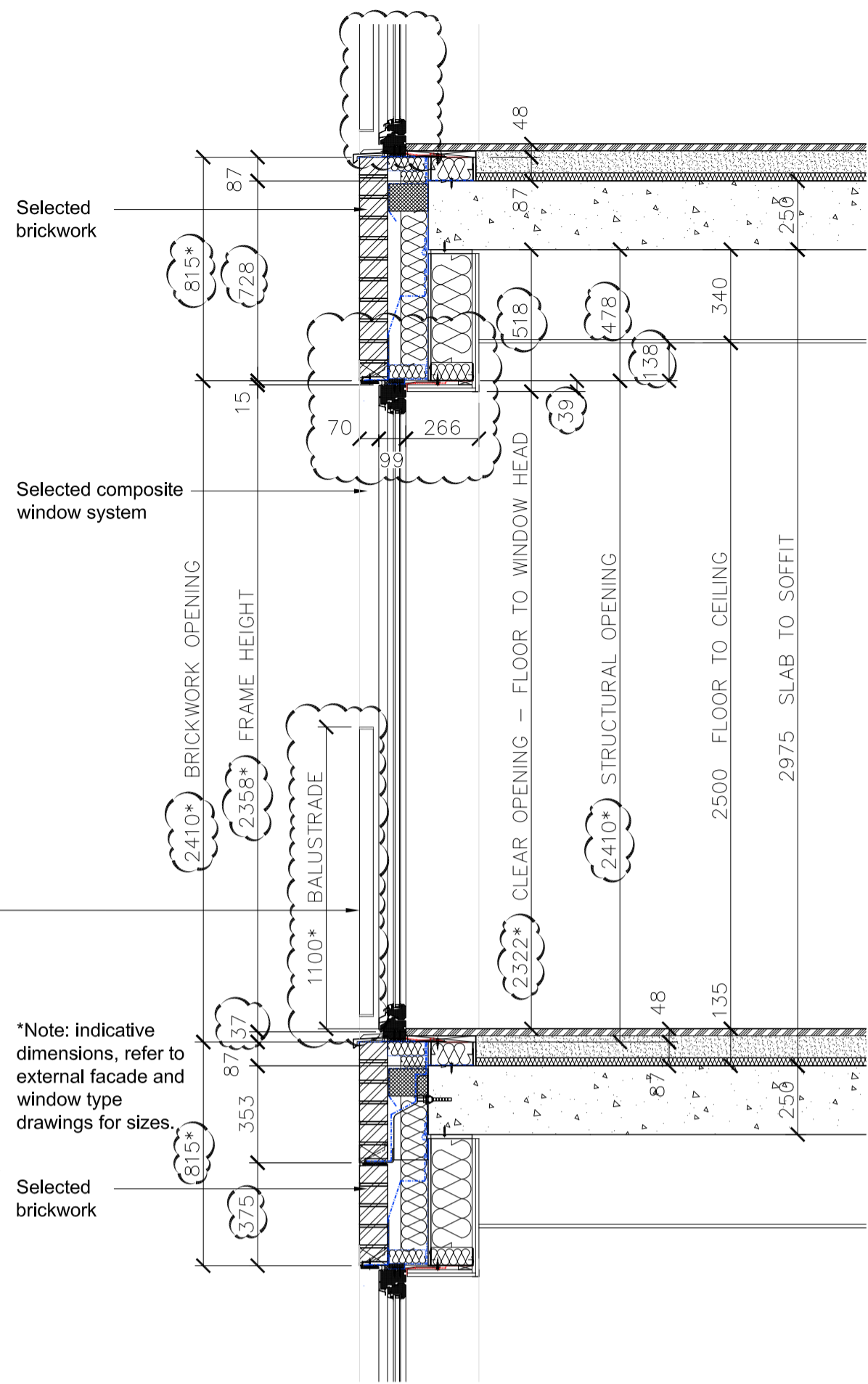
Cavity tray DPC (shown blue) above each opening c/w weepholes at max. 450mm centres.

Note:
Refer to window schedule for Juliet balcony provision.

Continuous masonry angle and soft joint at every other floor c/w weepholes at max. 450mm centres.

Cavity tray DPC (shown blue) above each opening c/w weepholes at max. 450mm centres.

1 Typical Elevation
Scale 1:20



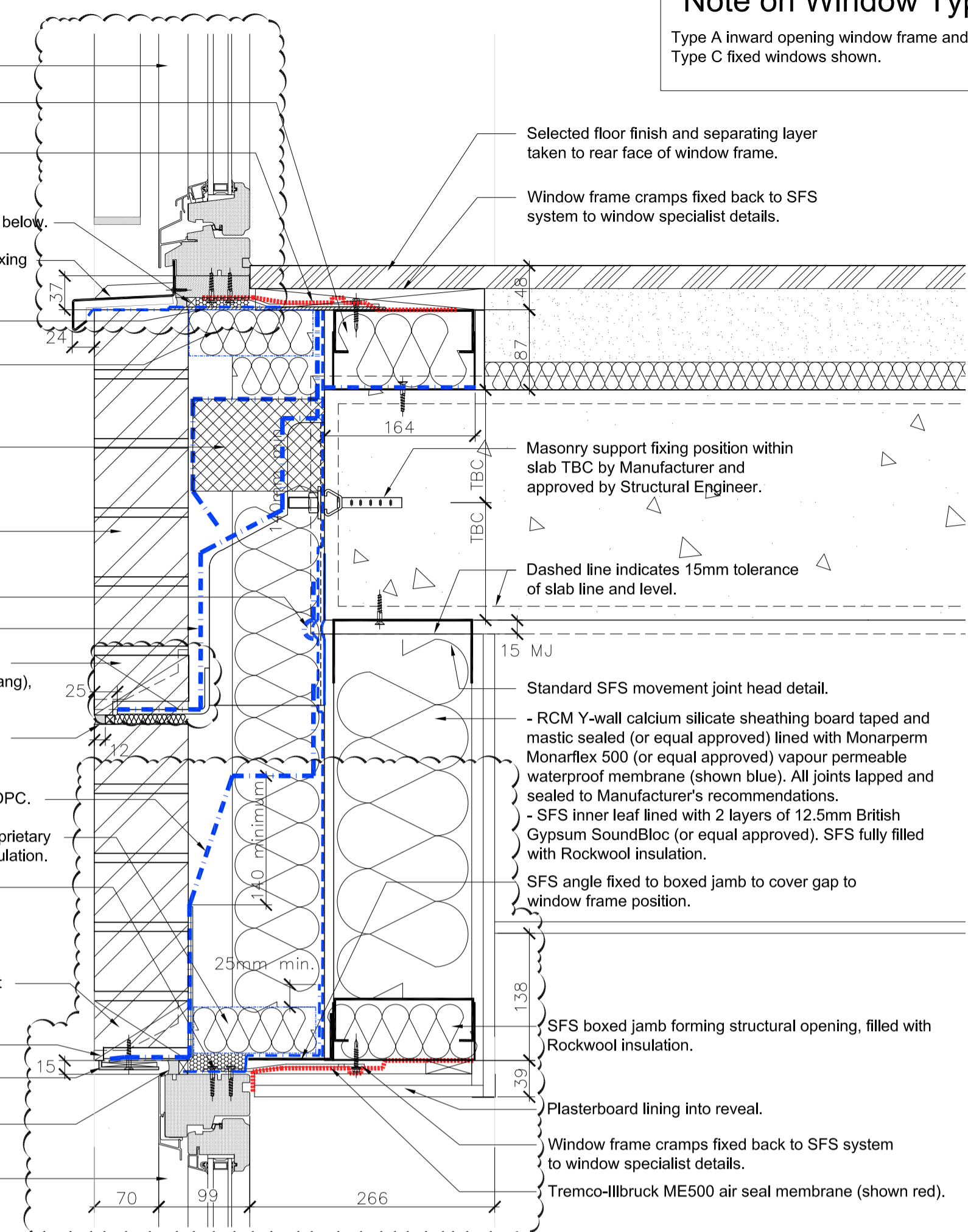
*Note: indicative dimensions, refer to external facade and window type drawings for sizes.

2 Typical Vertical Section
Scale 1:20

A-C1 Typical Cill Detail A-C1
Scale 1:5

- Selected composite window system
- SFS boxed jamb forming structural opening, filled with Rockwool insulation.
- Tremco-Ilbruck ME500 air seal membrane (shown red).
- Primary silicone weather seal an secondary DPC seal as notes below.
- Secret fixed 3mm thick PPC aluminium cill c/w stop ends and fixing straps. Colour matched to window frame.
- Galvanised mild steel bearing plate bedded in silicone by window installer.
- MDL insulation 'FIREZERO' Multi-sock (or equal approved) proprietary cavity closer, providing 30 minutes integrity and 15 minutes insulation.
- Proprietary cavity barrier providing, 30 minutes integrity and 15 minutes insulation.
- Selected brickwork
- Movement joint allowance in membranes.
- 50mm clear cavity
- Ancon (or equal approved) proprietary masonry angle support system at every other floor c/w pistol bricks (max. 25mm overhang), cavity tray DPC and weepholes at max. 450mm centres.
- Mastic joint (min. 12mm deep) aesthetically matched to mortar c/w, backing rod and compressible filler.
- Single leaf lintel by specialist contractor design c/w cavity tray DPC.
- MDL insulation 'FIREZERO' Multi-sock (or equal approved) proprietary cavity closer, providing 30 minutes integrity and 15 minutes insulation.
- Secondary weather seal provided by DPC lapped, nailed and sealed to window frame. DPC to extend 25mm beyond vertical cavity closer DPC. Expanding foam insulation to all gaps between frame and opening.
- Rytens Reetweep (or equal approved) proprietary weepholes at 450mm centres over openings. Minimum 2no. per opening.
- Pistol brick, maximum 25mm overhang.
- Anodised aluminium window head reveal flashing. Colour matched to window frames.
- Silicone primary seal (min. 12mm deep) between frame and brickwork opening. Colour: TBC.
- Selected composite window system

A-H1 Typical Head Detail A-H1
Scale 1:5



***Note on Window Types:**
Type A inward opening window frame and Type C fixed windows shown.

Selected floor finish and separating layer taken to rear face of window frame.

Window frame cramps fixed back to SFS system to window specialist details.

Masonry support fixing position within slab TBC by Manufacturer and approved by Structural Engineer.

Dashed line indicates 15mm tolerance of slab line and level.

Standard SFS movement joint head detail.

- RCM Y-wall calcium silicate sheathing board taped and mastic sealed (or equal approved) lined with Monaperm Monarflex 500 (or equal approved) vapour permeable waterproof membrane (shown blue). All joints lapped and sealed to Manufacturer's recommendations.

- SFS inner leaf lined with 2 layers of 12.5mm British Gypsum SoundBloc (or equal approved). SFS fully filled with Rockwool insulation.

SFS angle fixed to boxed jamb to cover gap to window frame position.

SFS boxed jamb forming structural opening, filled with Rockwool insulation.

Plasterboard lining into reveal.

Window frame cramps fixed back to SFS system to window specialist details.

Tremco-Ilbruck ME500 air seal membrane (shown red).

Information Provision Notes:

Specialist Sub-Contractors and Installers to provide all information as necessary and as specifically requested by NHBC and Building Control for submission.

BMA cannot be held responsible for failure or delay of information provision.

Information must comply with the relevant NHBC Standards and NHBC Officer requests, Building Regulations and Building Control Officer requests, third party or Manufacturer requirements as required to gain NHBC and Building Control approval.

Brickwork Generally:

Selected bricks: NHBC compliant bricks and mortar to be used in all locations.

Materials:

Refer to BB7 Fire Safety Strategy Report for full details of fire strategy provisions.
External wall cladding system to meet guidance given in Approved Document B (clause 12.5 to 12.9). All materials used in the external wall construction to be Class 0 (national class).

Notes:

- All dimensions to be confirmed on site prior to manufacture / order.
- All dissimilar metals to be isolated.
- All materials, systems and products are to be installed in full accordance with the Manufacturer's recommendations, BBA certificates or third party certificates/approval bodies.
- All works to be in accordance with:
NHBC Standards (Latest Edition),
Building Regulations Approved Documents (Latest Editions).
- All to comply with BB7 Fire Safety Strategy Report and Acoustic Report.
- Any fixings through waterproof membranes or EPDMs are to be fully sealed to the manufacturer recommendations.
- All pre-treated timbers are to be treated in accordance with NHBC materials standards.

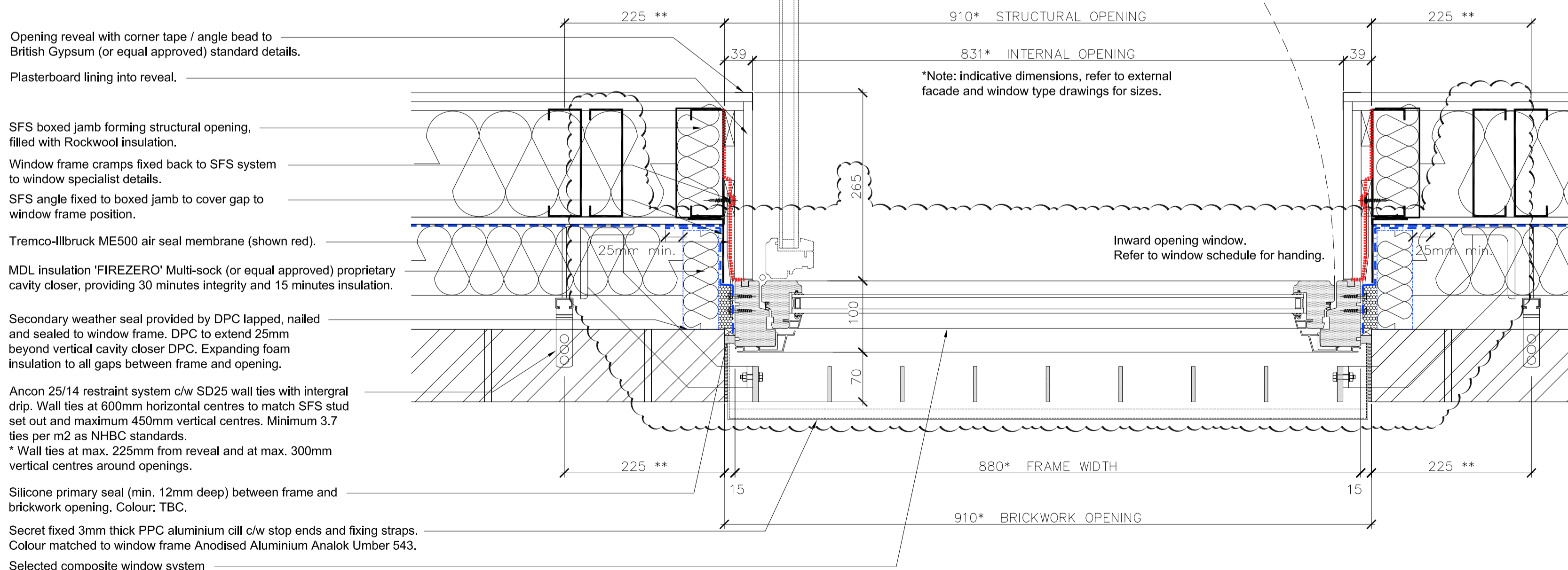
Window System:

Selected thermally broken hinged and glazed window (window as door) to achieve U value (project weighted value).
External colour: Anodised Aluminium Anolok Umber 543, UNO.
Internal frame finish - white.

Opening direction arrows are to UK standard - lines point to hinge side of door or window.

Window/door sub-contractor to propose glass to achieve specified thermal, acoustic and fire performance requirements. Note that all toughened glass is to be heat soak tested for failure due to nickel sulphide inclusions. Any laminated glass to be minimum 8.8mm thick. Glazing G values and blind requirements to be confirmed by M&E Engineer.

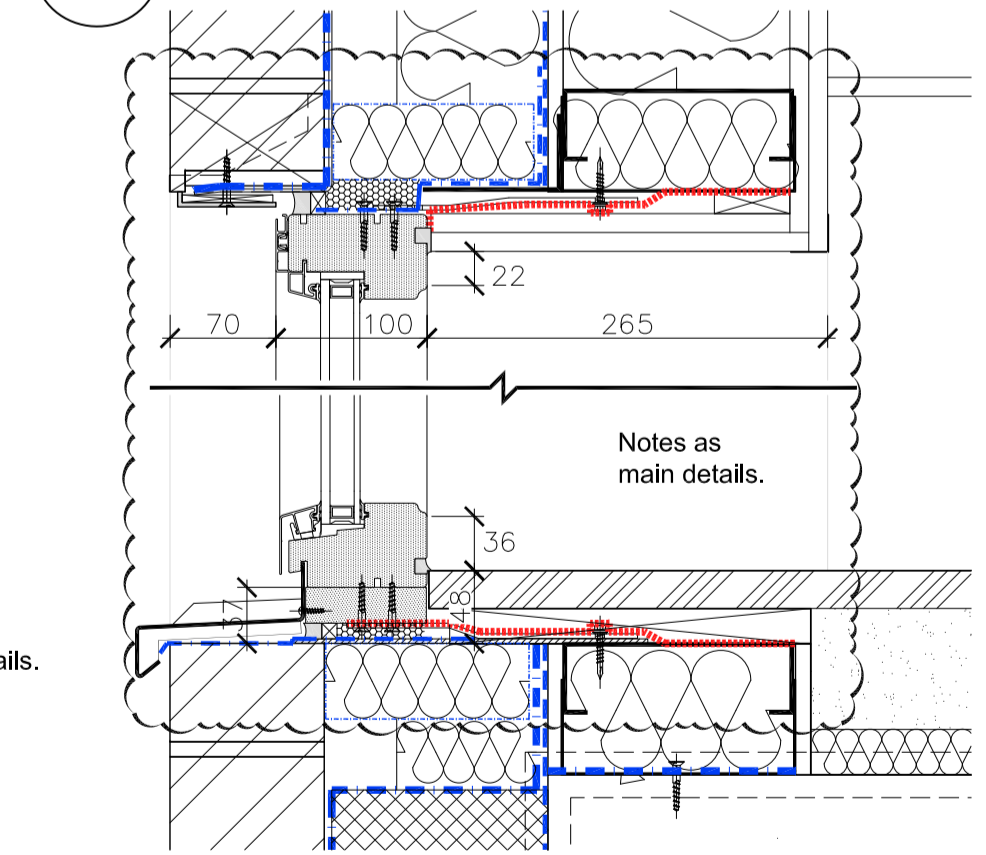
**Note: additional stud placed at 225mm from structural opening to accommodate wall tie system.



A-J1 Typical Jamb Detail A-J1
Scale 1:5

Note:
Refer to window schedule for Juliet balcony provision.

A-H1.2 Fixed Window Head Detail A-H1.2
Scale 1:5



A-C1.2 Fixed Window Cill Detail A-C1.2
Scale 1:5



A-J1.2 Fixed Window Jamb Detail A-J1.2
Scale 1:5



Reference list:
List all external references and models used, this must include the revision e.g.
MP1-AA-B1-SL-M3-A31-03001 REV A (Architectural Revit model Block 1)
MP1-BB-B1-SL-M3-A31-02002 REV C (Structural Revit model Block 1)
MP1-ZZ-B1-SL-M3-A71-05001 REV B (MEP Revit model Block 1 - Mechanical)
MP1-ZZ-B1-SL-M3-A71-06001 REV D (MEP Revit model Block 1 - Electrical)
4607-TG-REV B (Topological Survey)
etc.

Facade and Window Drawing Refs:

Type A's - Single opening window without fanlight - L20/480A
MP1-BMA-ALL-SL-ELV-A31-921061 - Type details
MP1-BMA-ALL-SL-ELV-A31-931065 - MVHR details

Type B's - Single opening window with fanlight - L20/480A
MP1-BMA-ALL-SL-ELV-A31-921061 - Type details
MP1-BMA-ALL-SL-ELV-A31-931065 - MVHR details

Type C's - Fixed window without fanlight - L20/481A
MP1-BMA-ALL-SL-ELV-A31-921060 - Type details
MP1-BMA-ALL-SL-ELV-A31-931065 - MVHR details

Type D's - Fixed window with fanlight - L20/481A
MP1-BMA-ALL-SL-ELV-A31-921061 - Type details
MP1-BMA-ALL-SL-ELV-A31-931065 - MVHR details

Type E's - Double opening or faux double window without fanlight - L20/480A
MP1-BMA-ALL-SL-ELV-A31-921062 - Type details
MP1-BMA-ALL-SL-ELV-A31-931066 - MVHR details

Type F's - Double opening or faux double window with fanlight - L20/480A
MP1-BMA-ALL-SL-ELV-A31-921063 - Type details
MP1-BMA-ALL-SL-ELV-A31-931066 - MVHR details

DOOR TYPES SUMMARY:

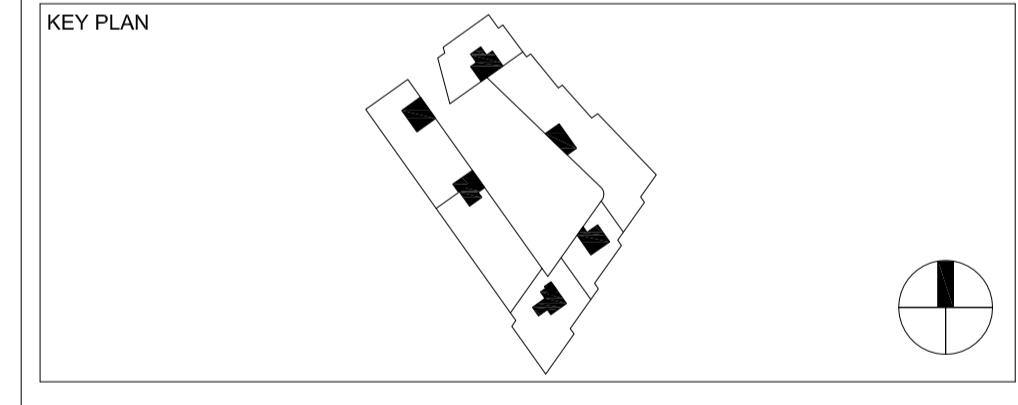
Type G's - Single, double or assembly with low access door threshold without fanlight
Sliding Doors - L20/520
Sliding Folding Doors - L20/530

Refer to the following plan set out drawings:
MP1-BMA-ALL-LG-GA-A31-921001 - Lower Ground
MP1-BMA-ALL-UG-GA-A31-921001 - Upper Ground
MP1-BMA-ALL-01-GA-A31-921003 - Level 1
MP1-BMA-ALL-02-GA-A31-921004 - Level 2
MP1-BMA-ALL-03-GA-A31-921005 - Level 3
MP1-BMA-ALL-04-GA-A31-921006 - Level 4
MP1-BMA-ALL-05-GA-A31-921007 - Level 5
MP1-BMA-ALL-06-GA-A31-921008 - Level 6
MP1-BMA-ALL-07-GA-A31-921009 - Level 7
MP1-BMA-ALL-08-GA-A31-921010 - Level 8
MP1-BMA-ALL-09-GA-A31-921011 - Level 9
MP1-BMA-ALL-10-GA-A31-921012 - Level 10
MP1-BMA-ALL-11-GA-A31-921013 - Level 11
MP1-BMA-ALL-12-GA-A31-921014 - Level 12
MP1-BMA-ALL-13-GA-A31-921015 - Level 13

MP1-BMA-ALL-SL-ELV-A31-921050 - Phoenix Place elevation
MP1-BMA-ALL-SL-ELV-A31-921051 - Courtyard East elevation
MP1-BMA-ALL-SL-ELV-A31-921052 - Mount Pleasant elevation
MP1-BMA-ALL-SL-ELV-A31-921053 - Courtyard South elevation
MP1-BMA-ALL-SL-ELV-A31-921054 - Gough Street elevation
MP1-BMA-ALL-SL-ELV-A31-921055 - Courtyard West elevation
MP1-BMA-ALL-SL-ELV-A31-921056 - The Walk elevation
MP1-BMA-ALL-SL-ELV-A31-921057 - Courtyard North elevation

| Rev | DATE | REVISION HISTORY | Dsg | Dw | Chk | App |
|-----|----------|--|-----|----|-----|-----|
| C | 08-04-19 | Reveal amended to 70mm, indicative Juliet balcony added, title amended | | | | |
| B | 07-03-19 | Fixed window details added, BYUK comments incorporated. | | | | |
| A | 19-10-18 | First Issue | | | | |

CLIENT LOGO
Taylor Wimpey
Central London
www.bouygues-uk.com



ORIGINATOR
BroadwayMalyan^{BM}

DRAWING TITLE
**Mount Pleasant Phase 1
Shallow Reveal Window c/w Juliet Balcony
or Fixed Window Without Juliet Balcony
(Without Fanlight)**

| Name | Signature | Date |
|-----------------|-----------|------|
| Designed by BMA | | |
| Drawn by JT | | |
| Checked by SMC | | |
| Approved by SMC | | |

| SCALE | @ A1 | BIM FILE NAME |
|------------------|-----------------|---------------|
| 1:5/20 | | |
| FIRST ISSUE DATE | PROPOSED STATUS | |
| 19.10.18 | Review | |

| PROJECT | ISSUER | AREA | LEVEL | TYPE | TRADE | SEQUENCE | REV |
|---------|--------|------|-------|------|-------|----------|-----|
| MP1 | BMA | ALL | SL | DET | A31 | 921060 | C |

SHALLOW REVEAL