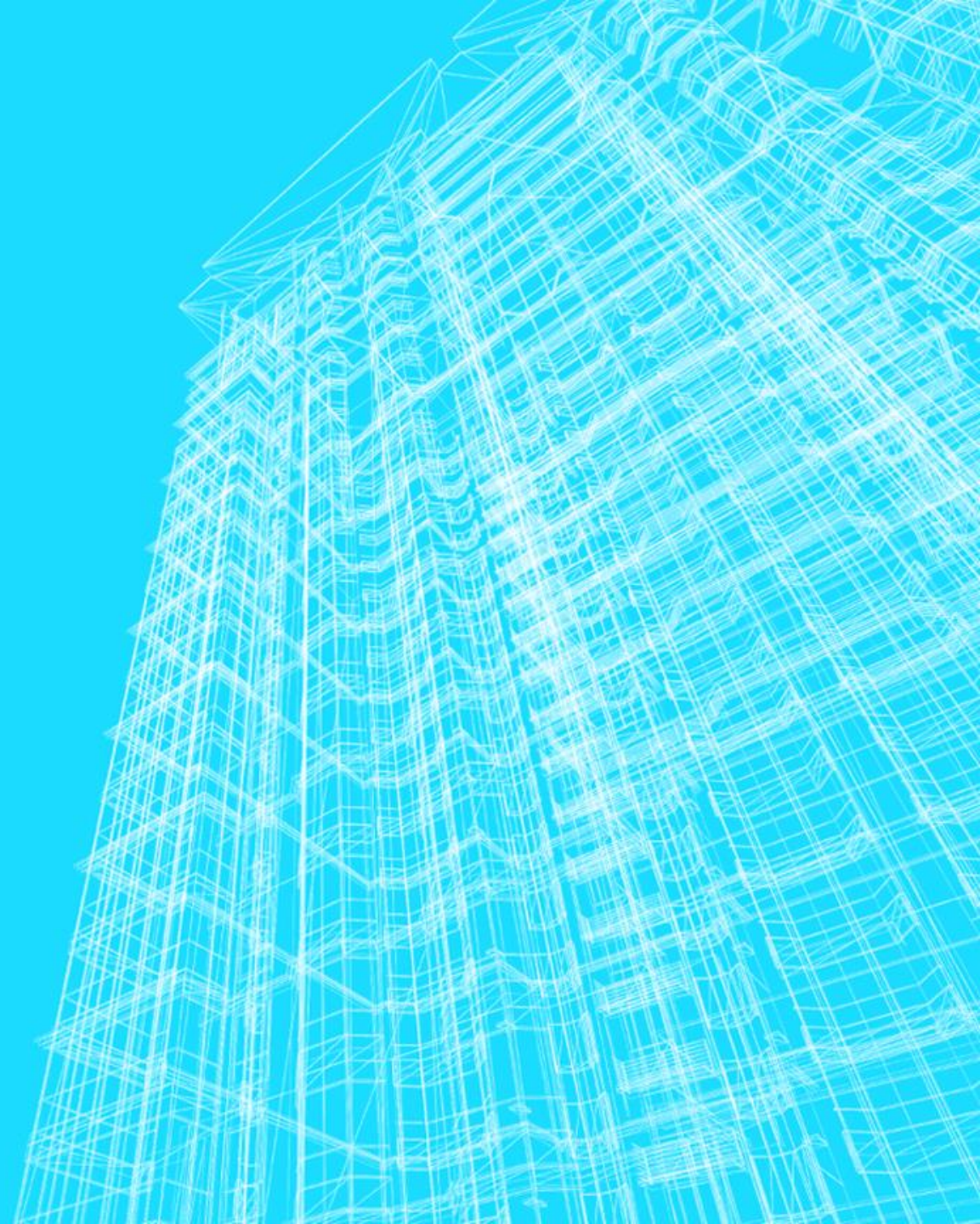


CARTMEL

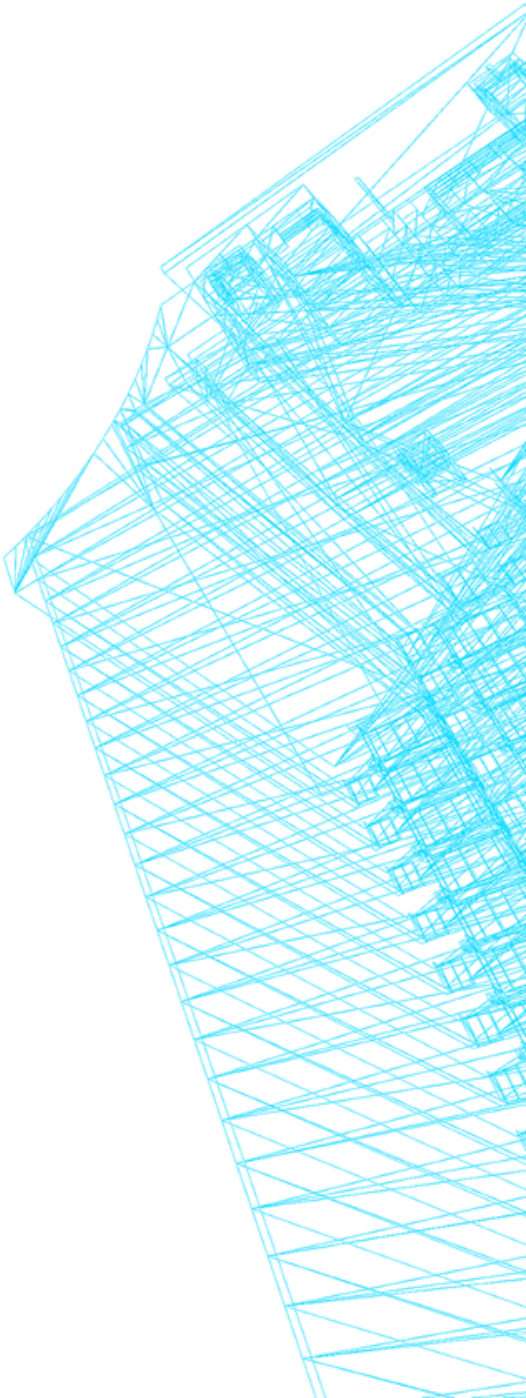
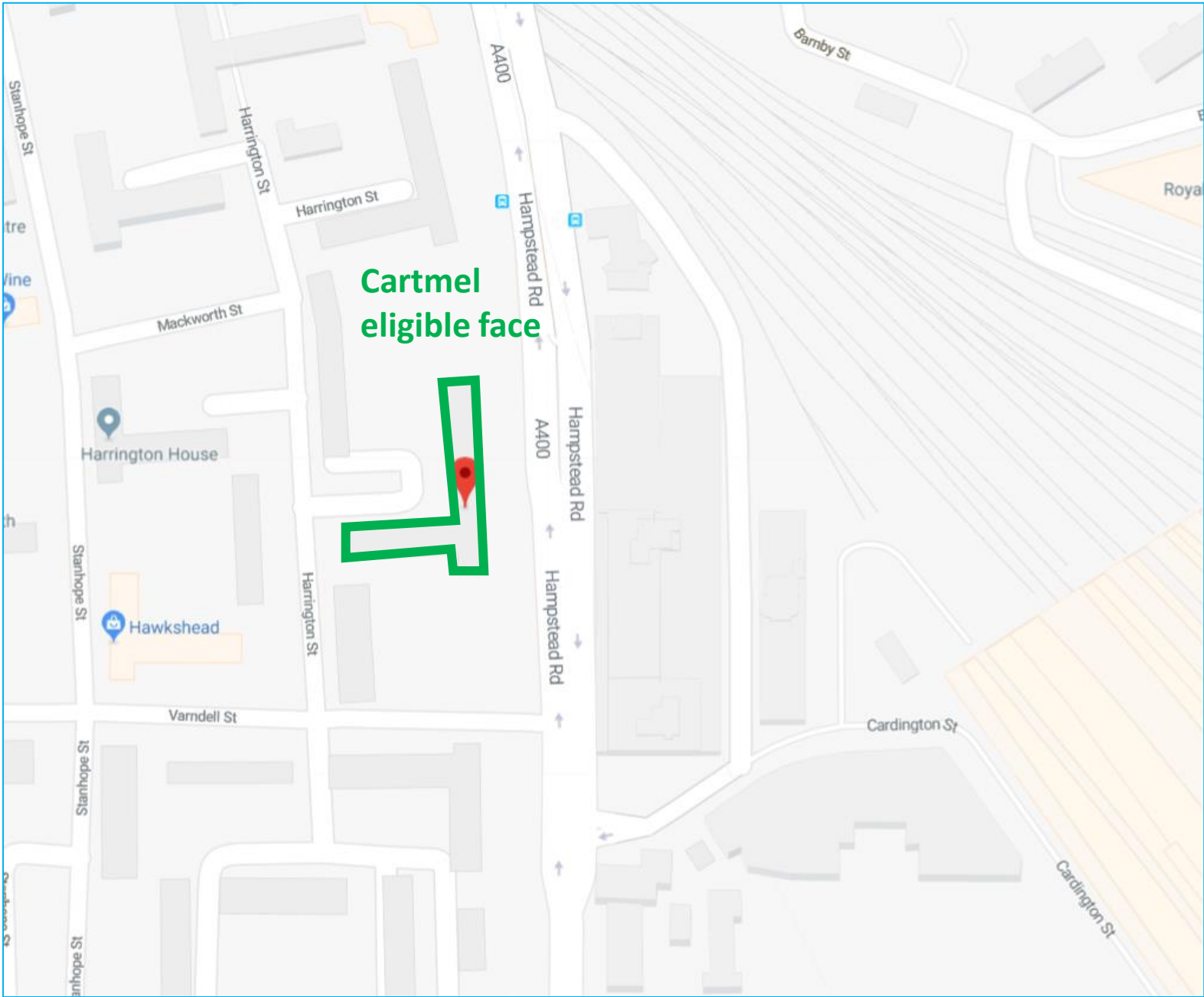
TOWN PLANNING

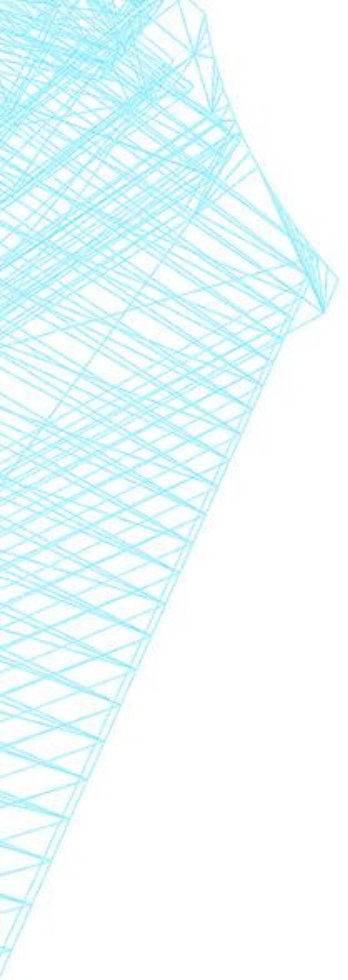
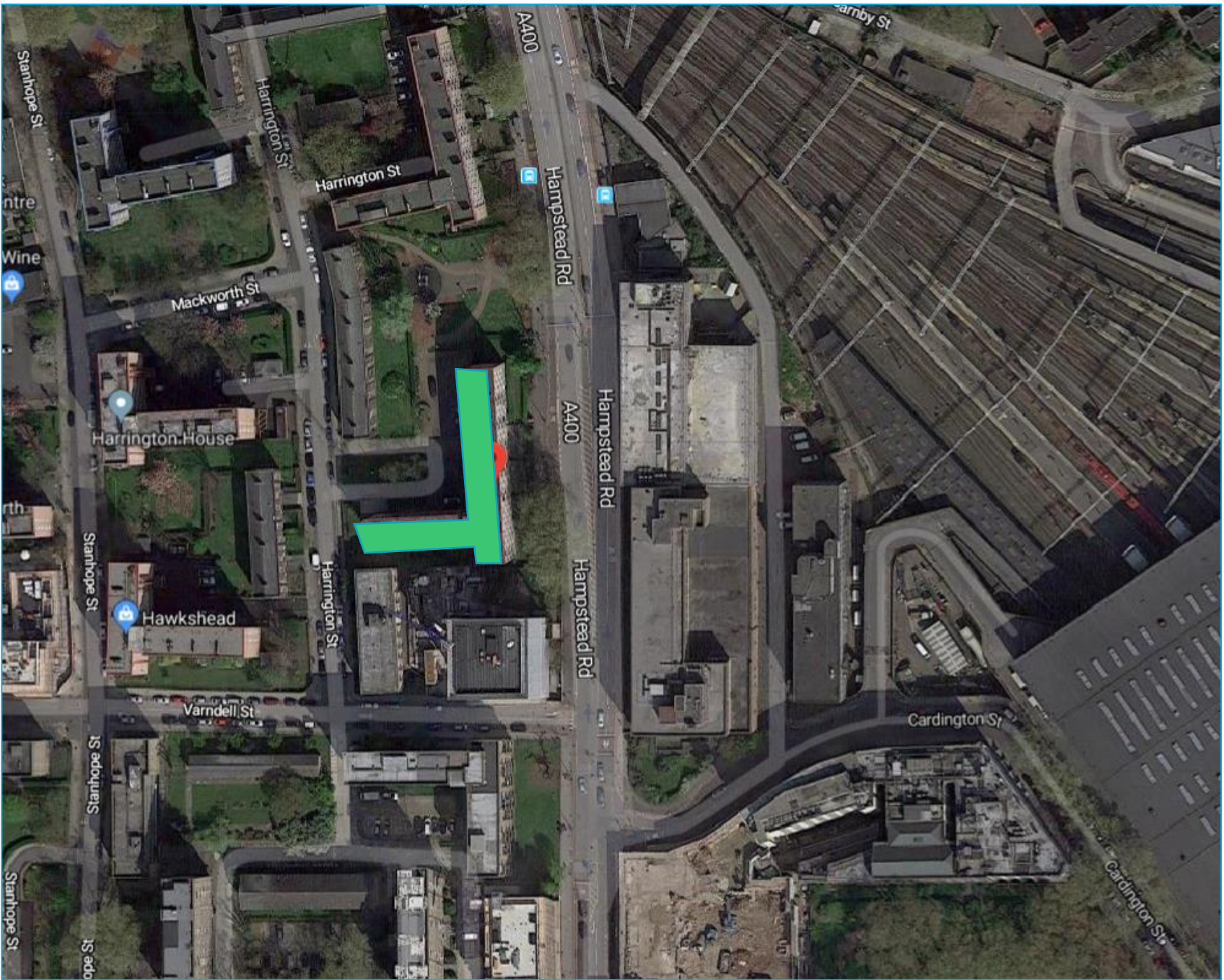


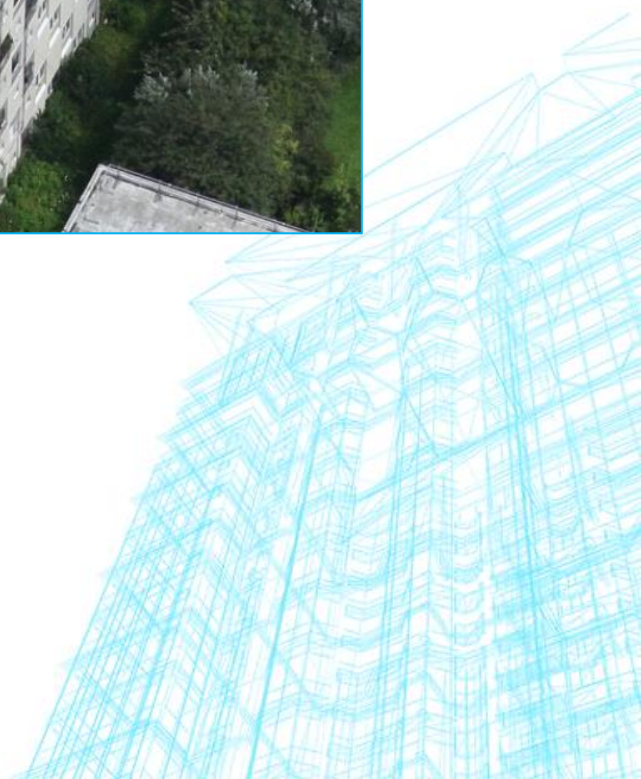
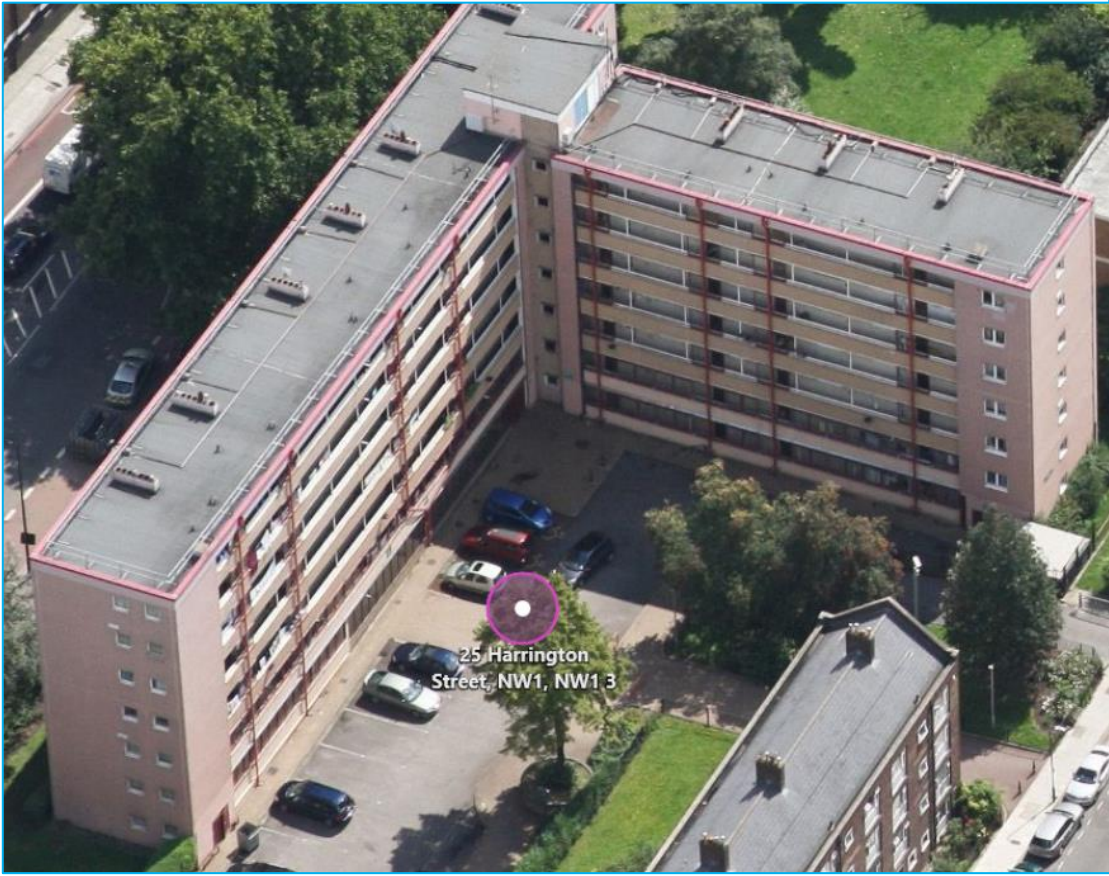


INSTALLATION OF SONAIR

- 69 no. Properties eligible for NI scheme
- NI Eligible face (mark up below)
- These slides cover the worst case scenario for grille installation.
- Back elevation of building have gallery style walkway, so grilles will not be visible
- Average 2 to 3 Sonair per property with a total of 186 grilles
- Internal fit grilles which will avoid risk of working at height
- Grille color: White









INTERNAL FIT WALL KIT

- Ideal for high-rise applications
- Suitable for 100mm fans
- Quick & easy installation
- Extendable length
- Fits entirely from inside the property
- Reduces water ingress
- Includes low-resistance external grille
- Suitable as a passive air grille
- Covers external break-out

The grilles will be white in colour in all locations

