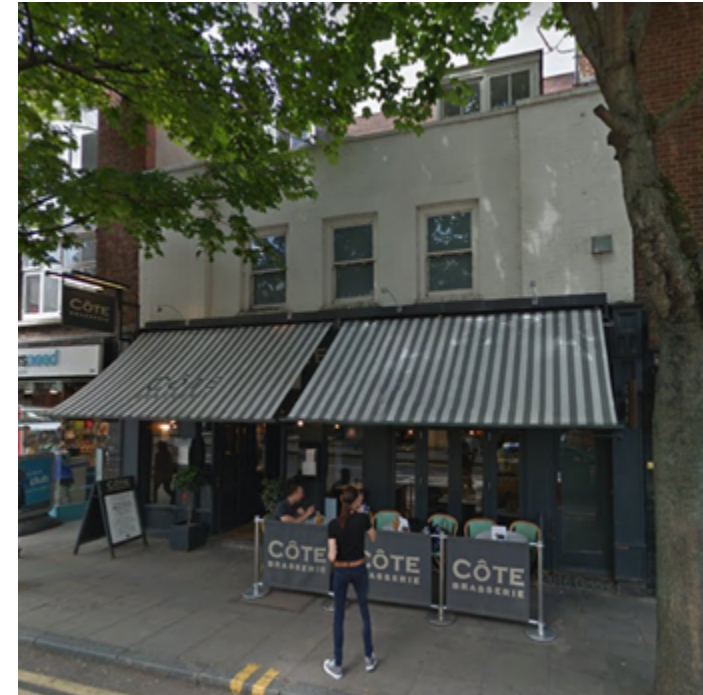
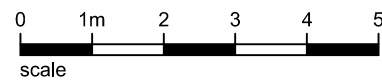




existing front elevation



in the trading name of Electronic Architecture Ltd  
LONDON: 01773 007 723  
mail@ea-world.co.uk www.ea-world.co.uk

CLIENT  
Five Guys

SITE  
Cote  
32 Parkway, Camden.  
London. NW1 7AH.

DRAWING  
Existing front elevation

DATE	SCALE	SURVEYOR	CAD
Jan. 2019	1:50	EA	GE

NUMBER	AMENDMENT
EA414-19 - 01	

This drawing is the property of Electronic Architecture Ltd and is issued on condition that it is not copied in any manner or issued to third parties without the written consent from Electronic Architecture Ltd.  
For Terms and Conditions refer to: <http://www.ea-world.co.uk/terms.php>.  
All figured measurements are represented in millimetre units.