

**MAIN SCHEME**

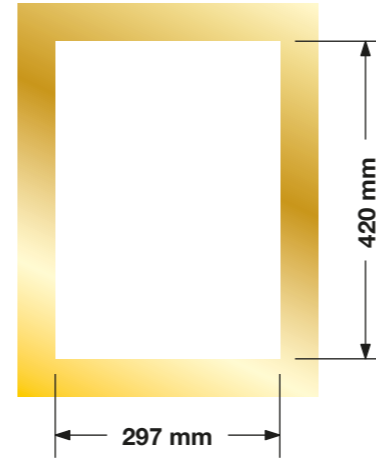
**ITEM 01 (Qty 3)**

Reglid 3 sets of individual housename letters on site



**ITEM 02 (Qty 2)**

2No A3 Brass LED internally illuminated menu cases.  
Scale 1:10



**ITEM 03 (Qty 1)**

Remove & dispose of lantern



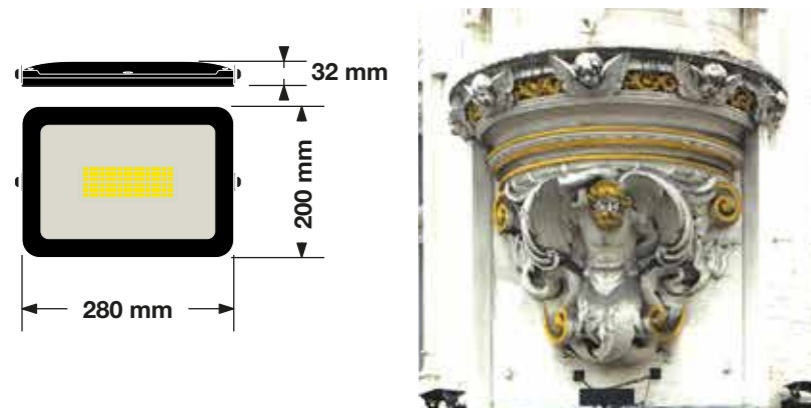
**ITEM 04 (Qty 2)**

Relamp 2No remaining lanterns with squirrel cage bulbs.



**ITEM 01A (Qty 1)**

Black-cased floodlight to shine up to masonry corner feature with details to be picked out BY MAIN CONTRACTOR



**PICTURE FRAME PROFILE SAMPLE**

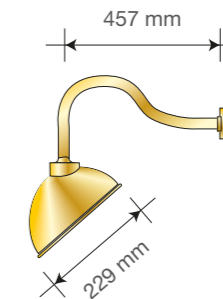
**ITEM 06 (Qty 2) U 18 ETCH LOGO**

Featuring:  
- Reverse applied.  
- Crystal etch vinyl.  
Scale 1:5



**ITEM 07 (Qty 9) COWL LIGHTS**

Brass cowl light illumination to existing letters.  
To replace existing trough lights.  
3No per set of letters  
Scale 1:20



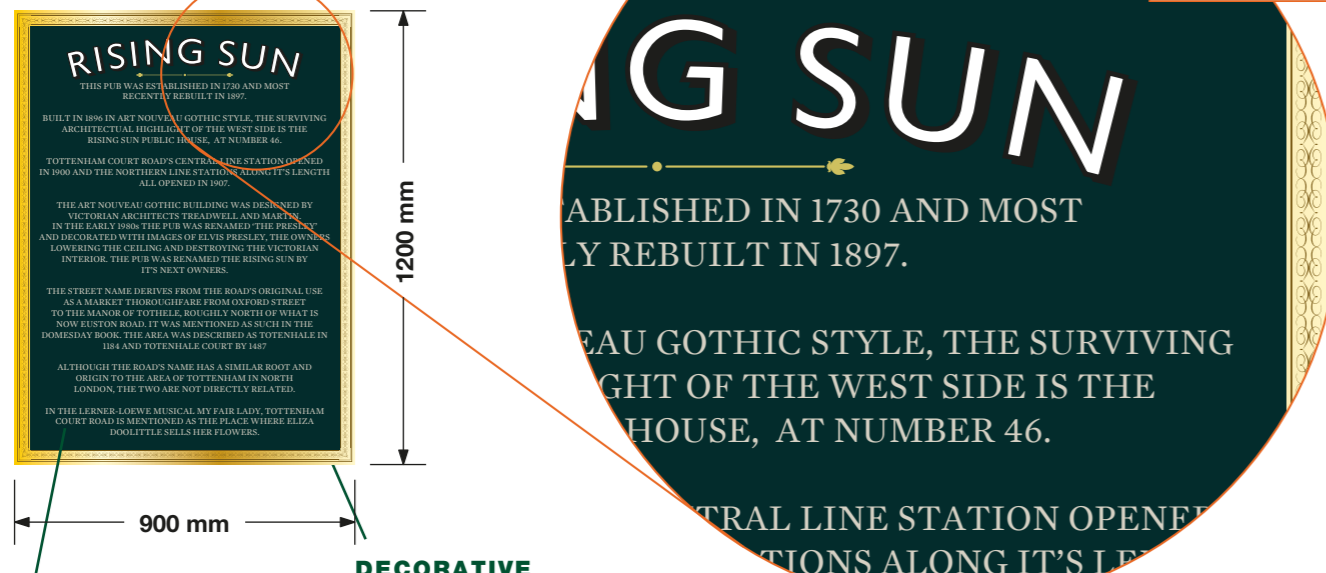
**ITEM 08 (Qty 2) U 05 SIGNWRITING**

Signwritten text & graphics, Gold leaf / GK Stone / Black.  
Scale 1:20



**ITEM 05 (Qty 1)**

1No new history board to LHS elevation with gold picture frame trim  
Scale 1:20



**COLOUR REF: DULUX 50GG**

**DECORATIVE GOLD PICTURE FRAME TRIM**

**FONTS USED**

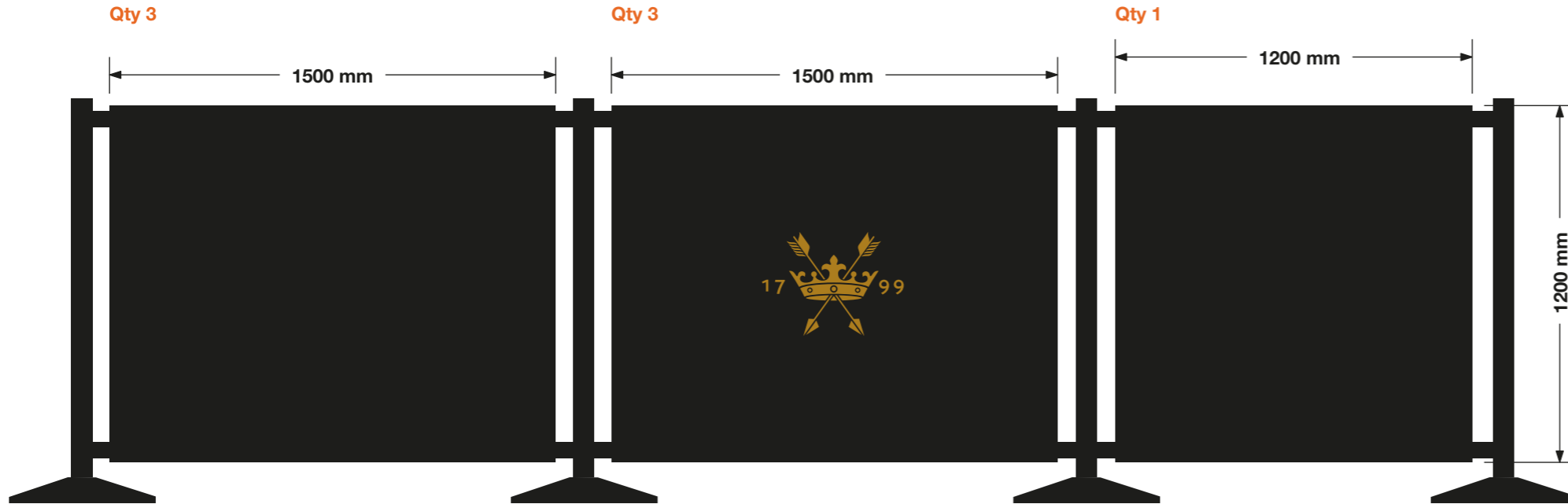
**GREENE KING RISING SUN**  
46 TOTTENHAM COURT RD., LONDON W1T 2ED

144245 (REV D)  
27/03/19 - JCL

**COPYRIGHT :**  
THE ATTACHED DESIGNS AND ILLUSTRATIONS ARE INTENDED SOLELY FOR, AND SHOULD ONLY BE USED BY, THOSE TO WHOM THIS DESIGN SPECIFICATION IS ADDRESSED.  
**THE CONTENTS ARE STRICTLY PRIVATE AND CONFIDENTIAL.**  
ANY FORM OF REPRODUCTION, DISSEMINATION, COPYING, DISCLOSURE, MODIFICATION OR DISTRIBUTION IS STRICTLY PROHIBITED WITHOUT THE PRIOR WRITTEN CONSENT OF ASHLEIGH SIGNS LTD  
(COMPANY NUMBER : 1325080)  
WHOSE REGISTERED ADDRESS IS:  
ASHLEIGH HOUSE, BECKBRIDGE ROAD, NORMANTON INDUSTRIAL ESTATE, NORMANTON. WF6 1TE

**MAIN SCHEME**

**ITEM 09 (Qty 7)**  
**CAFE BARRIERS**  
 Cafe Barriers with printed logo.  
 Scale 1:20



**ITEM 10 (Qty 1) U 16**  
**INTERNAL DOOR PLAQUE**

**Featuring:**  
 - 3mm aluminum OUTER trim finished MO1275.  
 - 3mm aluminium INNER trim finished MO1275.  
 - 3mm celar acrylic panel fixed from rear.  
 - Reverse applied digitally printed texture.  
 - Backed in Hexis P6871 D/Sided Gold.  
 - VHB tape to rear.  
**Scale 1:5**



**ITEM 11 (Qty 1) U 16**  
**INTERNAL DOOR PLAQUE**

**Featuring:**  
 - 3mm aluminum OUTER trim finished MO1275.  
 - 3mm aluminium INNER trim finished MO1275.  
 - 3mm celar acrylic panel fixed from rear.  
 - Reverse applied digitally printed texture.  
 - Backed in Hexis P6871 D/Sided Gold.  
 - VHB tape to rear.  
**Scale 1:5**



**ITEM 12 (Qty 1) U 16**  
**INTERNAL DOOR PLAQUE**

**Featuring:**  
 - 3mm aluminum OUTER trim finished MO1275.  
 - 3mm aluminium INNER trim finished MO1275.  
 - 3mm celar acrylic panel fixed from rear.  
 - Reverse applied digitally printed texture.  
 - Backed in Hexis P6871 D/Sided Gold.  
 - VHB tape to rear.  
**Scale 1:5**



**ITEM 13 (Qty 1) U 16**  
**INTERNAL DOOR PLAQUE**

**Featuring:**  
 - 3mm aluminum OUTER trim finished MO1275.  
 - 3mm aluminium INNER trim finished MO1275.  
 - 3mm celar acrylic panel fixed from rear.  
 - Reverse applied digitally printed texture.  
 - Backed in Hexis P6871 D/Sided Gold.  
 - VHB tape to rear.  
**Scale 1:5**



**ITEM 14 (Qty 1) U 16**  
**INTERNAL DOOR PLAQUE**

**Featuring:**  
 - 3mm aluminum OUTER trim finished MO1275.  
 - 3mm aluminium INNER trim finished MO1275.  
 - 3mm celar acrylic panel fixed from rear.  
 - Reverse applied digitally printed texture.  
 - Backed in Hexis P6871 D/Sided Gold.  
 - VHB tape to rear.  
**Scale 1:5**



**ITEM 15 (Qty 1) U 16**  
**INTERNAL DOOR PLAQUE**

**Featuring:**  
 - 3mm aluminum OUTER trim finished MO1275.  
 - 3mm aluminium INNER trim finished MO1275.  
 - 3mm celar acrylic panel fixed from rear.  
 - Reverse applied digitally printed texture.  
 - Backed in Hexis P6871 D/Sided Gold.  
 - VHB tape to rear.  
**Scale 1:5**



**ITEM 16**  
**INTERNAL SIGNWRITING**



**GREENE KING**  
 BURY ST EDMUNDS

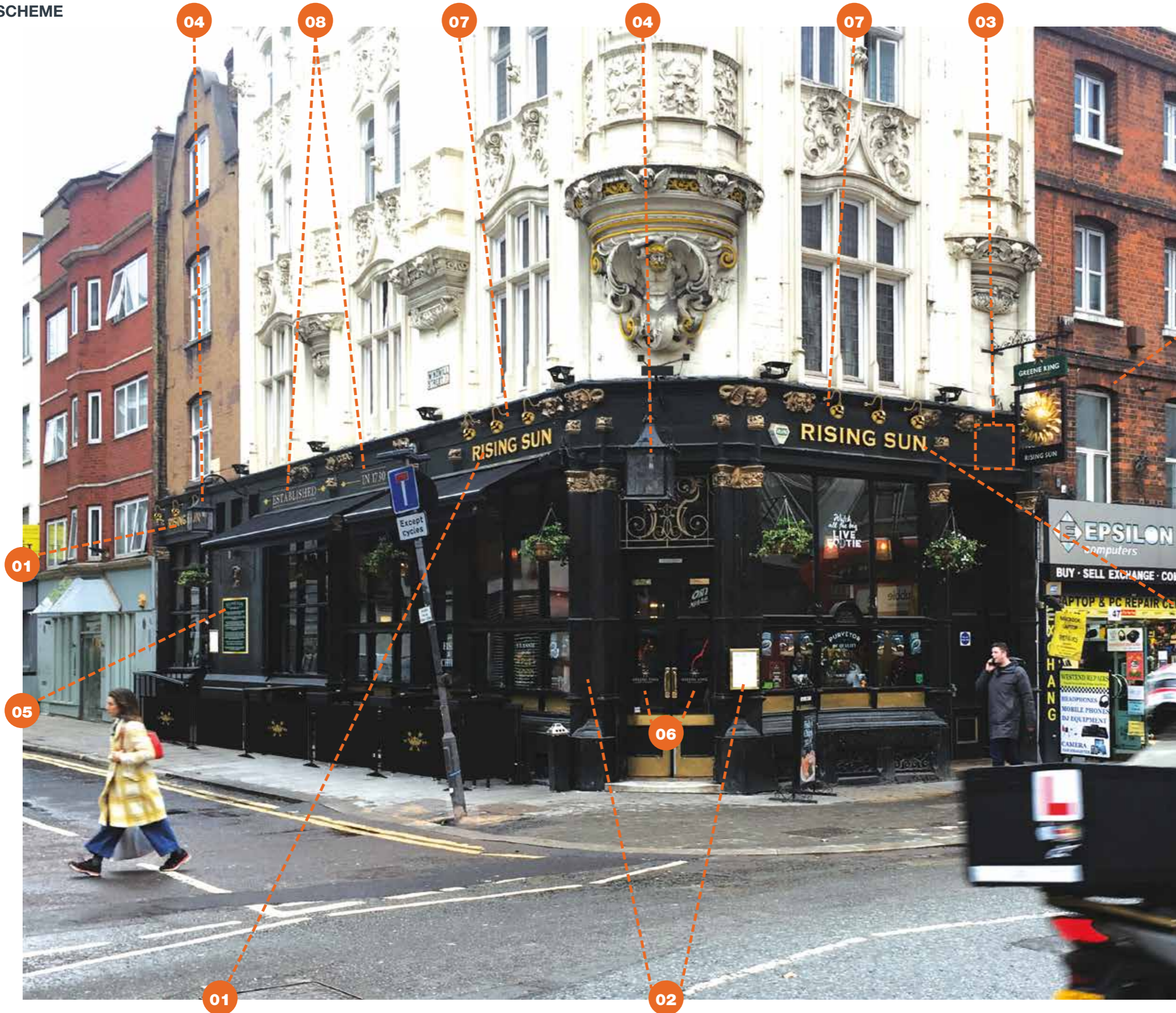
**GREENE KING**  
 RISING SUN  
 46 TOTTENHAM  
 COURT RD.,  
 LONDON  
 W1T 2ED

144245 (REV D)  
 27/03/19 - JCL

**COPYRIGHT :**  
 THE ATTACHED DESIGNS AND ILLUSTRATIONS  
 ARE INTENDED SOLELY FOR, AND SHOULD  
 ONLY BE USED BY, THOSE TO WHOM THIS  
 DESIGN SPECIFICATION IS ADDRESSED.

**THE CONTENTS ARE STRICTLY  
 PRIVATE AND CONFIDENTIAL.**  
 ANY FORM OF REPRODUCTION,  
 DISSEMINATION, COPYING, DISCLOSURE,  
 MODIFICATION OR DISTRIBUTION IS STRICTLY  
 PROHIBITED WITHOUT THE PRIOR WRITTEN  
 CONSENT OF ASHLEIGH SIGNS LTD  
 (COMPANY NUMBER : 1325080)  
 WHOSE REGISTERED ADDRESS IS:  
 ASHLEIGH HOUSE, BECKBRIDGE ROAD,  
 NORMANTON INDUSTRIAL ESTATE,  
 NORMANTON. WF6 1TE





02

01

05

04

08

07

04

07

03

01

06

01

02



**GREENE KING**  
BURY ST EDMUNDS

**GREENE KING  
RISING SUN**  
46 TOTTENHAM  
COURT RD.,  
LONDON  
W1T 2ED

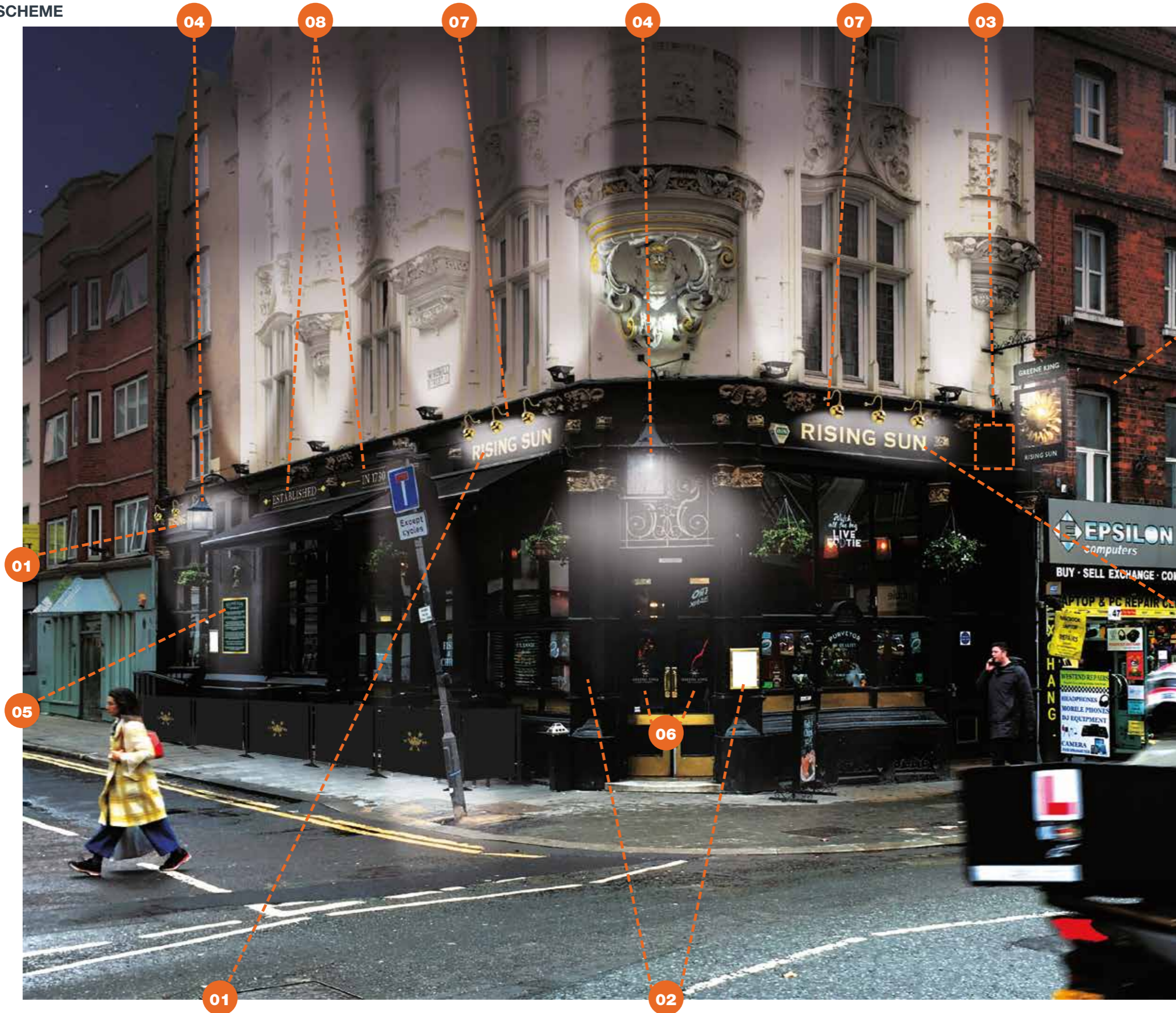
144245 (REV D)  
27/03/19 - JCL

COPYRIGHT :  
THE ATTACHED DESIGNS AND ILLUSTRATIONS  
ARE INTENDED SOLELY FOR, AND SHOULD  
ONLY BE USED BY, THOSE TO WHOM THIS  
DESIGN SPECIFICATION IS ADDRESSED.

THE CONTENTS ARE STRICTLY  
PRIVATE AND CONFIDENTIAL.  
ANY FORM OF REPRODUCTION,  
DISSEMINATION, COPYING, DISCLOSURE,  
MODIFICATION OR DISTRIBUTION IS STRICTLY  
PROHIBITED WITHOUT THE PRIOR WRITTEN  
CONSENT OF ASHLEIGH SIGNS LTD

(COMPANY NUMBER : 1325080)  
WHOSE REGISTERED ADDRESS IS:  
ASHLEIGH HOUSE, BECKBRIDGE ROAD,  
NORMANTON INDUSTRIAL ESTATE,  
NORMANTON, W6 6 1TE





02

01

01

05

04

08

07

04

07

03

06

01

02



**GREENE KING**  
BURY ST EDMUNDS

**GREENE KING  
RISING SUN**  
46 TOTTENHAM  
COURT RD.,  
LONDON  
W1T 2ED

**144245 (REV D)**  
27/03/19 - JCL

COPYRIGHT :  
THE ATTACHED DESIGNS AND ILLUSTRATIONS  
ARE INTENDED SOLELY FOR, AND SHOULD  
ONLY BE USED BY, THOSE TO WHOM THIS  
DESIGN SPECIFICATION IS ADDRESSED.

THE CONTENTS ARE STRICTLY  
PRIVATE AND CONFIDENTIAL.  
ANY FORM OF REPRODUCTION,  
DISSEMINATION, COPYING, DISCLOSURE,  
MODIFICATION OR DISTRIBUTION IS STRICTLY  
PROHIBITED WITHOUT THE PRIOR WRITTEN  
CONSENT OF ASHLEIGH SIGNS LTD

(COMPANY NUMBER : 1325080)  
WHOSE REGISTERED ADDRESS IS:  
ASHLEIGH HOUSE, BECKBRIDGE ROAD,  
NORMANTON INDUSTRIAL ESTATE,  
NORMANTON, W66 1TE