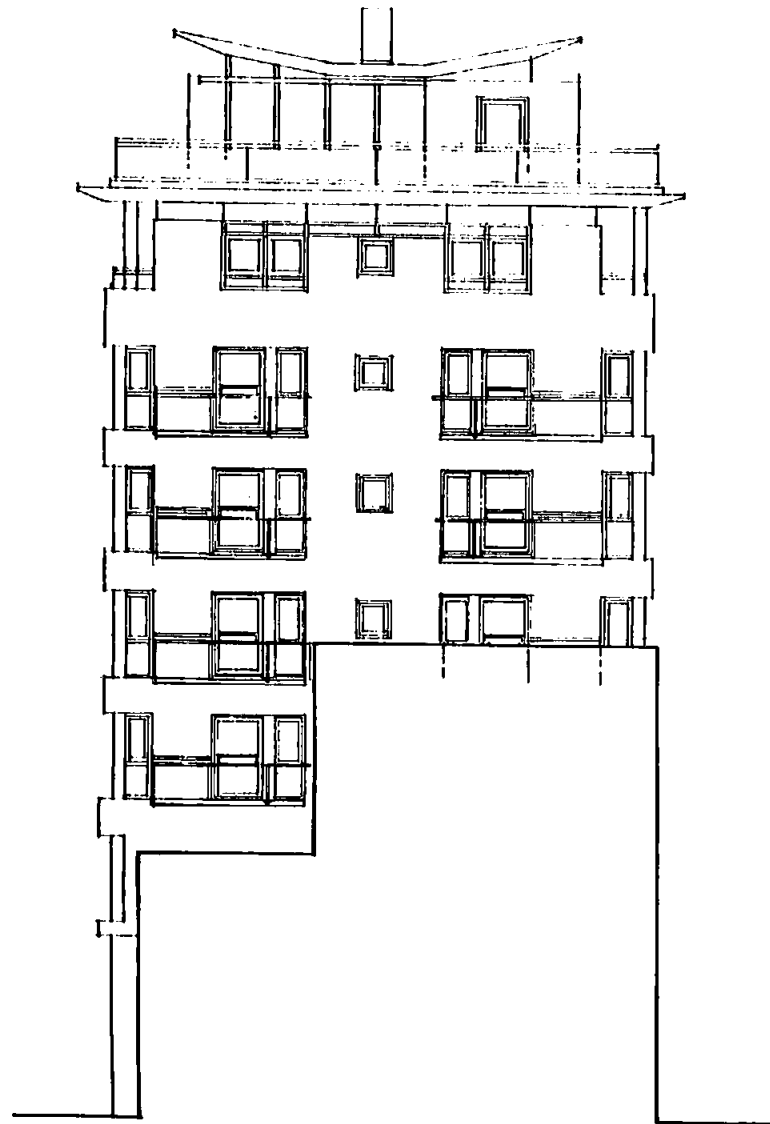


P9704850R1



PROPOSED END ELEVATION
1:200

Good Copy
LONDON BOROUGH OF CAMDEN
TOWN AND COUNTRY PLANNING ACTS
19 FEB 1998
PLANS APPROVED
ON BEHALF OF THE COUNCIL

Rev.A AMENDMENTS TO ACCORD WITH PLANS 15/10/97

14 GREENLAND STREET LONDON NW1 0ND
TEL 0171 284 0929 FAX 0171 284 0994

Neale + Norden

LIMITED

job		
7 HIGH HOLBORN		
client		
HOLBORN VILLAGE		
title		
Proposed End Elevation		
date	scale	drawn
08/97	1:200	
job no	drawing no	revision
24597	P018	A