

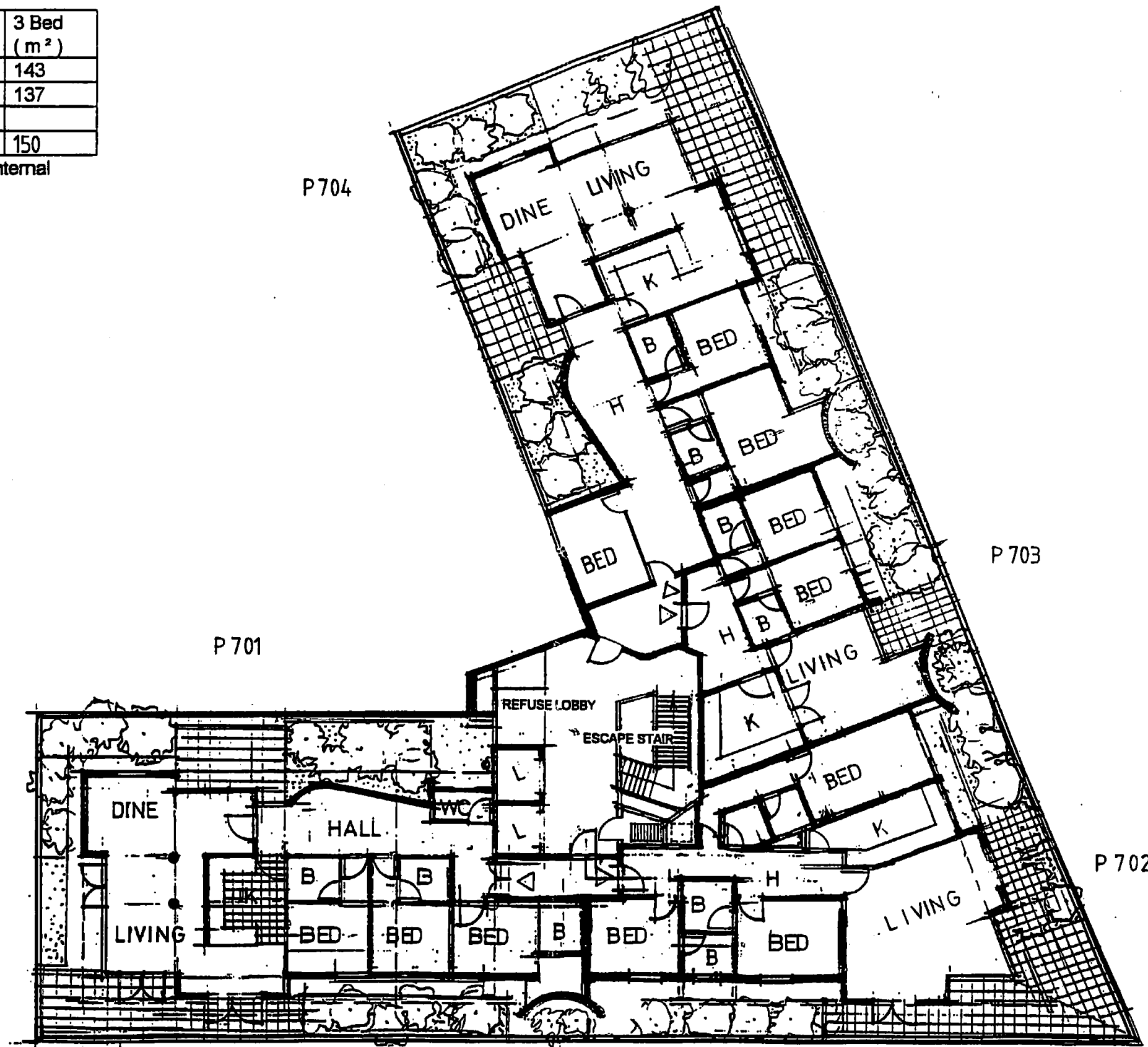
PROVISIONAL

SCHEME B

Plot No.	1 Bed (m <sup>2</sup> )	2 Bed (m <sup>2</sup> )	3 Bed (m <sup>2</sup> )
P701			143
P702			137
P703		71	
P704			150

n.b. areas are approximate net internal

P9704890R



*Code Copy*  
 LONDON BOROUGH OF HOXBORN  
 TOWN AND COUNCIL PLANNING  
 19 FEB 1997  
 PLANS APPROVED  
 ON BEHALF OF THE COUNCIL

SEVENTH FLOOR PLAN  
 1: 200

REV. B. P704 LAYOUT AMENDMENTS. 2/10/97.  
 REV. A. ACCESS TO ROOF SHOWN. 14/8/97

14 GREENLAND STREET LONDON NW1 0ND  
 TEL 0171 284 0929 FAX 0171 284 0594

**Neale + Norden**  
 LIMITED

job  
 7 HIGH HOLBORN

client  
 HOLBORN VILLAGE

title  
 Seventh Floor Plan

date	scale	drawn
06/97	1:200	

job no	drawing no	revision
24597	P010	B