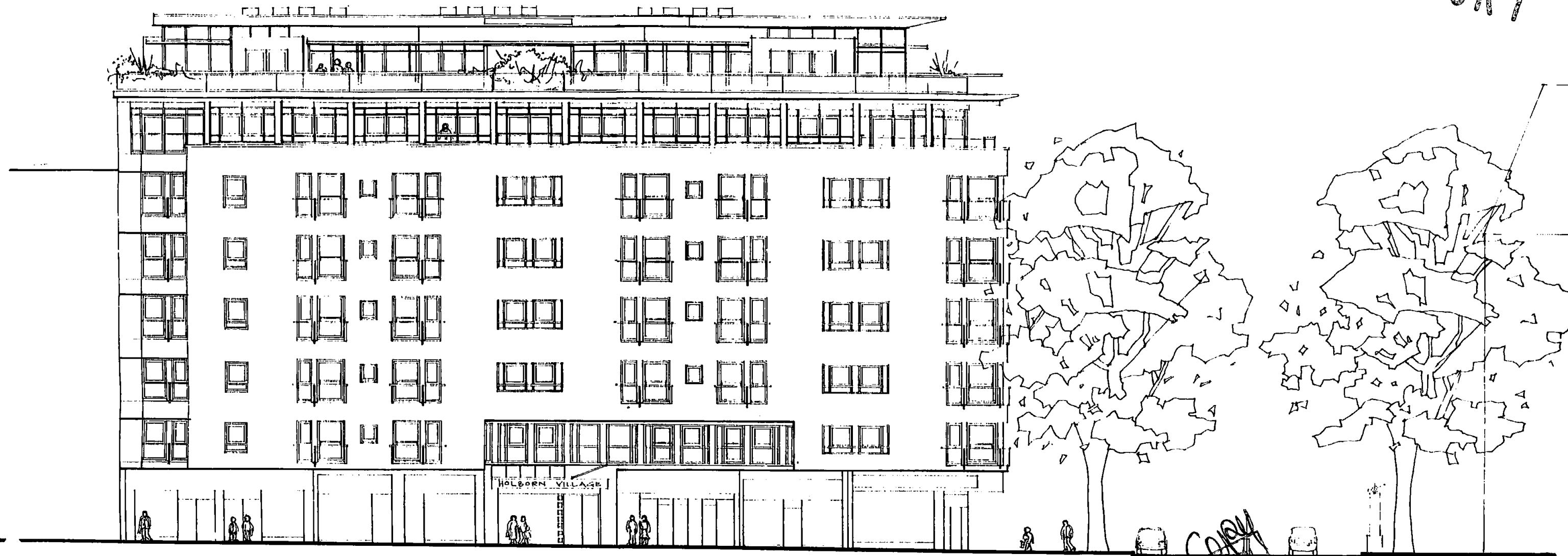


P9704850R1



Carole Corry
 LONDON BOROUGH OF CAMDEN
 TOWN & COUNTRY PLANNING ACTS
 19 FEB 1993
 PLANS APPROVED
 ON BEHALF OF THE COUNCIL

REV. B. ROOF AMENITIES
 REV. A. ROOF DETAILS
 15/10/97
 11/6/97

14 GREENLAND STREET LONDON NW1 0ND
 TEL 0171 284 0929 FAX 0171 284 0594

Neale + Norden
 LIMITED

job		
7 HIGH HOLBORN		
client		
HOLBORN VILLAGE		
title		
Proposed High Holborn Elevation		
date	scale	drawn
06/97	1:200	
job no	drawing no	revision
24597	P016	B.

PROPOSED HIGH HOLBORN ELEVATION
 1:200