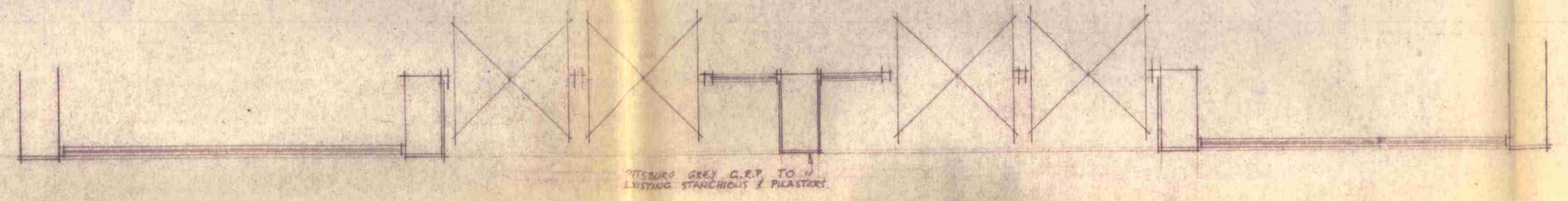
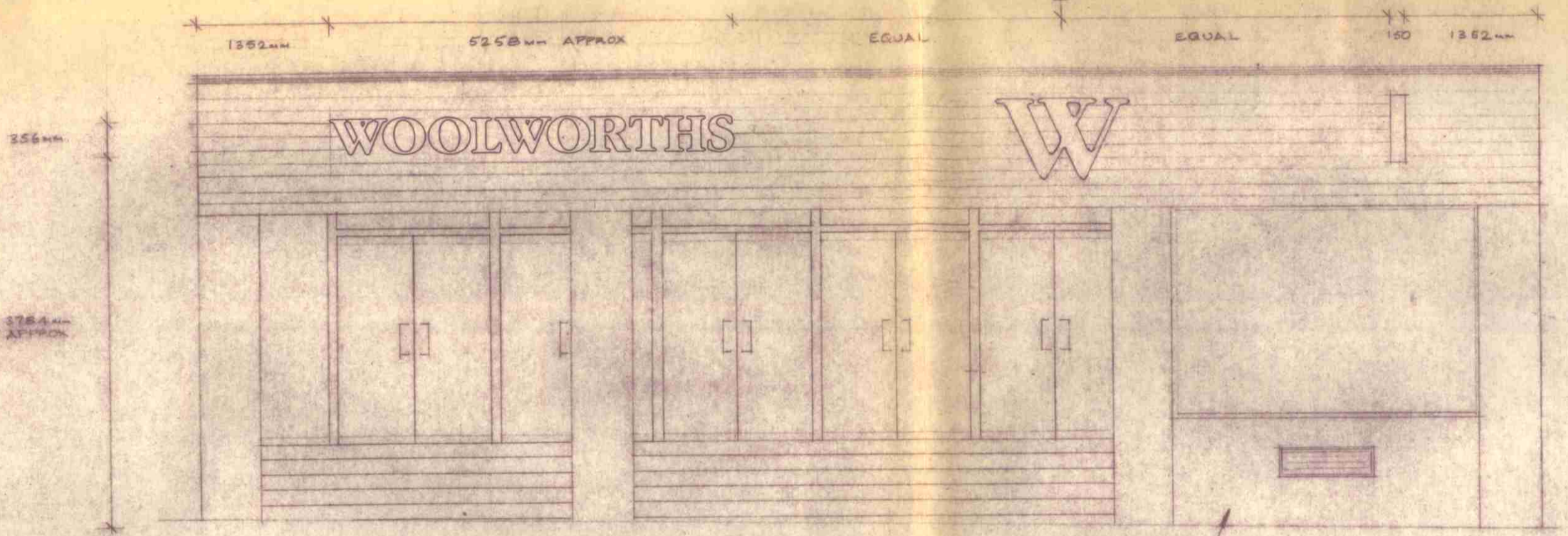


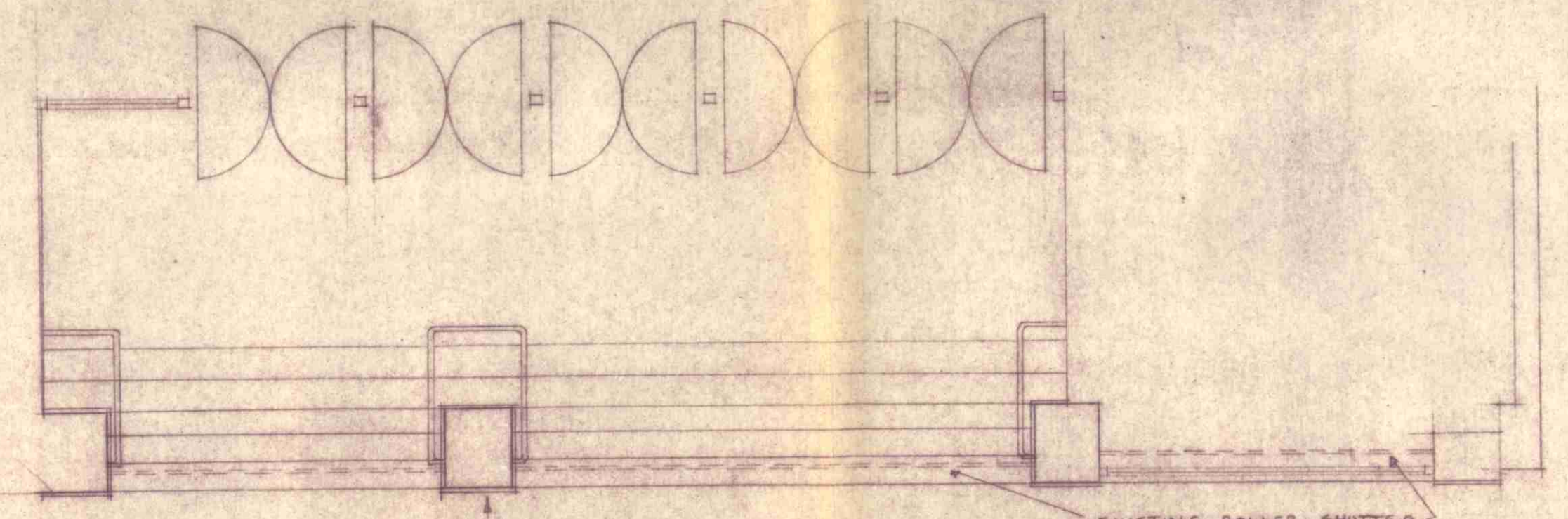
ELEVATION TO HIGH HOLBORN



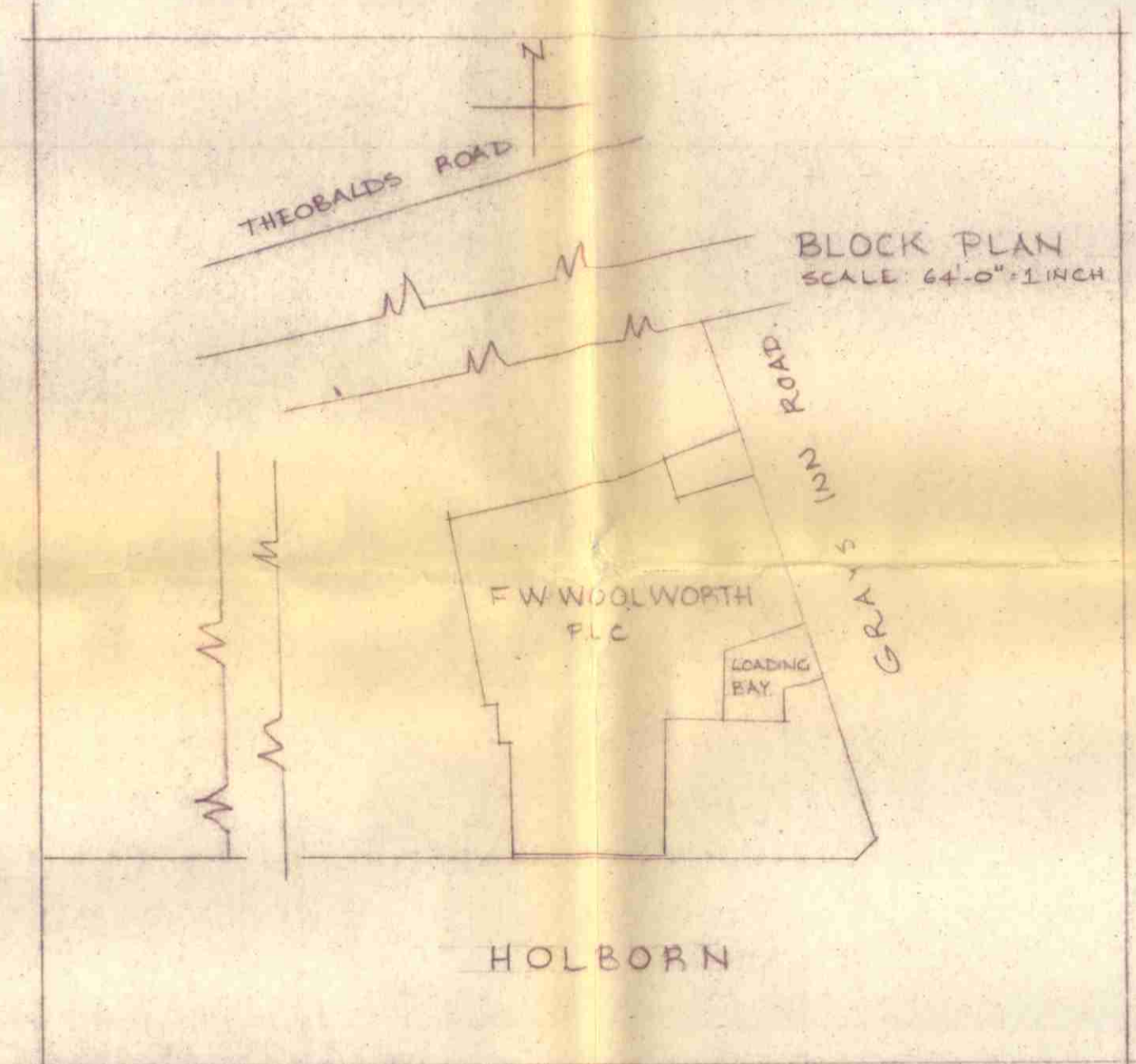
PLAN



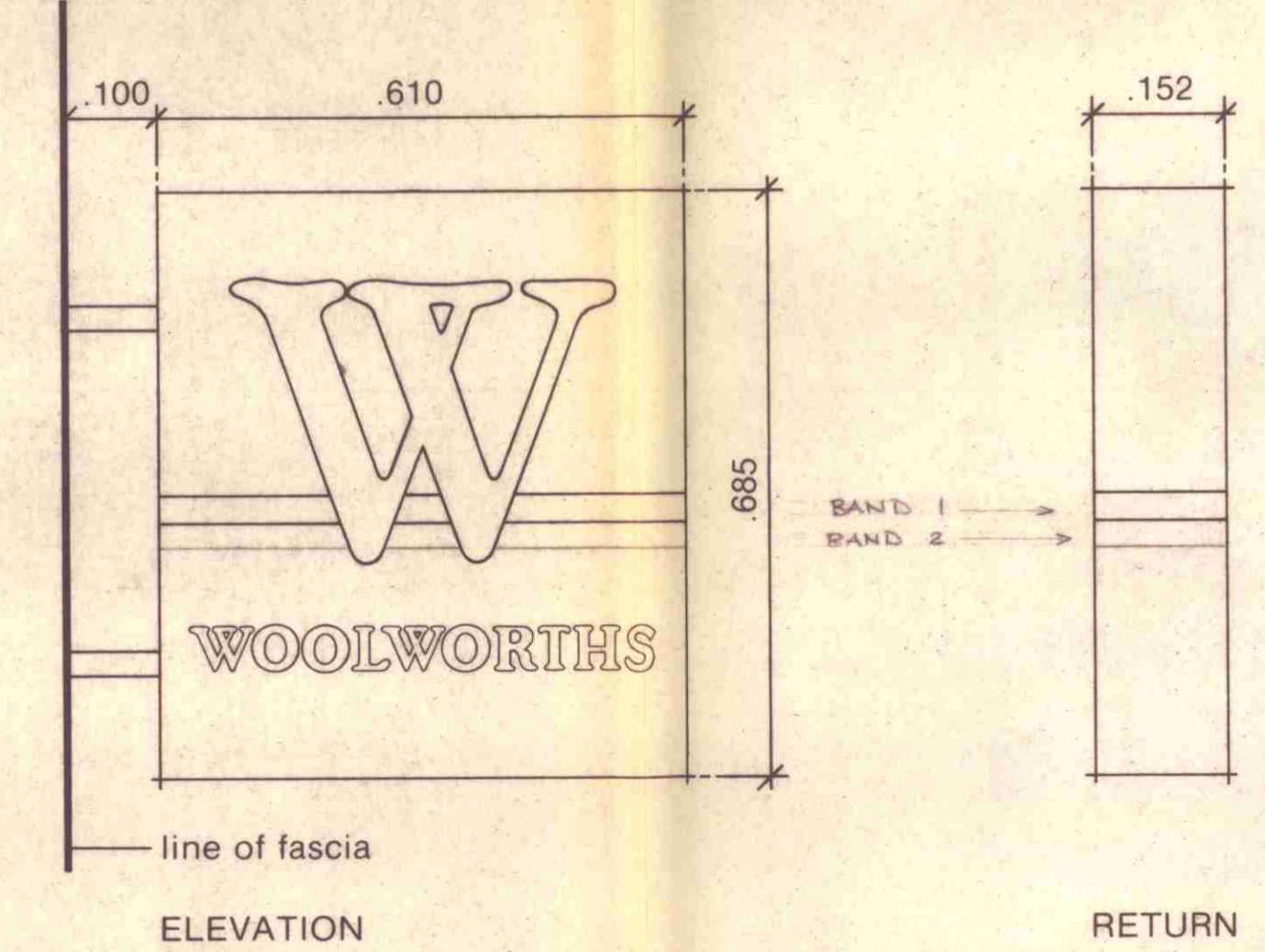
ELEVATION TO GREYS INN ROAD



PLAN



HOLBORN



ELEVATION

RETURN

PROJECTING SIGN

SPECIFICATION FOR SHOPFRONT

- FASCIA**
Horizontally ribbed Class "O" GRP Moulded Fascia Panel.
- Fascia (a)** Front Face PANTONE BLUE 286
Step Back 1 WHITE BS 00 65F
Step Back 2 RED BS 04 E 56
- SOFFIT** RED BS 04 E 56
- SIGNS**
White vacuum formed acrylic letters reading "Woolworths" in house style. Illuminated from rear by fluorescent cold cathode tubes in white tray.
Height of letters 256mm
"W" sign. Letter "W" in moulded G.R.P. with radius edges.
Height 615. Colour RED.
Back pan on 50mm clear acrylic spacers. Rear illumination in neon tubes to give halo effect.
- PROJECTING SIGN**
Standard size .610 x .685 x .152 Acrylic formed. Sign to be double sided.
Projecting sign. Background PANTONE BLUE 286. Letters reading "Woolworths" white BS. OOE. 55.
"W" RED BS 04 E 56
Band 1 WHITE BS 00 65F
Band 2 RED BS 04 E 56
- PILASTERS AND RETURNS**
Riven Slate textured GRP Colour Pittsburg Grey
- CORNICE**
Painted white BS. OOE. 55.
- COLUMN FINISH**
Stainless steel clad columns with seams at sides.
- SHOPFRONT**
Sashwork and frames with Synthra Palvin finish Carnival Red BS. O4E. 56
Shopfront doors glazed with top and bottom stainless steel bottom rails.
Handles "D" Pattern Carnival Red BS. O4E. 56
Stainless Steel letter plate.
NON SLIP LOBBY TILES - BROWN/LEIGE (PLATE M2)
EXISTING STALLRISER TO BE RETAINED.
STANCHIONS
RIVEN SLATE TEXTURED G.R.P. PITTSBURG GREY

N16/19/D/TP 840764(R)

NOTE BEFORE FABRICATION OF SHOPFRONT, ALL LEVELS TO BE CHECKED AND MEASURED SURVEY TO BE CARRIED OUT

173 HIGH HOLBORN	
DRG No. 173/84/2	
Title F.W. WOOLWORTH PLC 8/13 HIGH HOLBORN LONDON WC1V 6DT	
Project shopfront details	
LONDON BOROUGH OF CAMDEN TOWN AND COUNTRY PLANNING ACT 13 MAR 1985 PLANS NOT APPROVED ON BEHALF OF THE COUNCIL	scale 1:50 date OCTOBER 1984 drawn by J. FALCONER WOOLWORTH ARCHITECTS DEPARTMENT 242-246 MARYLEBONE ROAD LONDON NW1 6JL tel. 01 262 1222