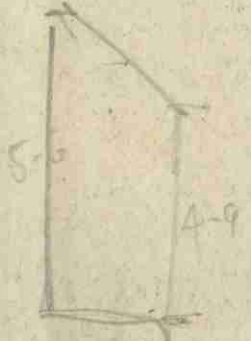
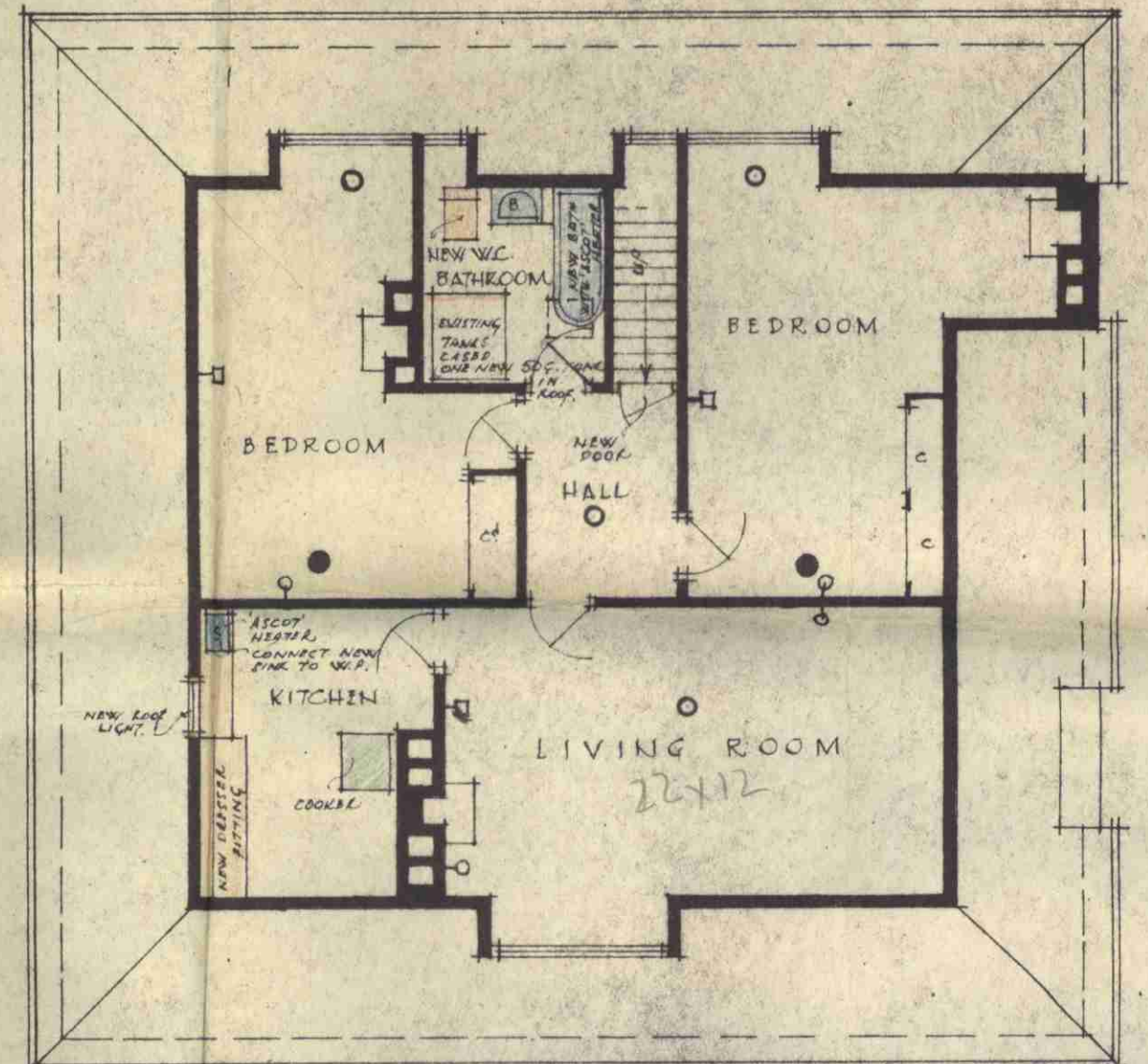
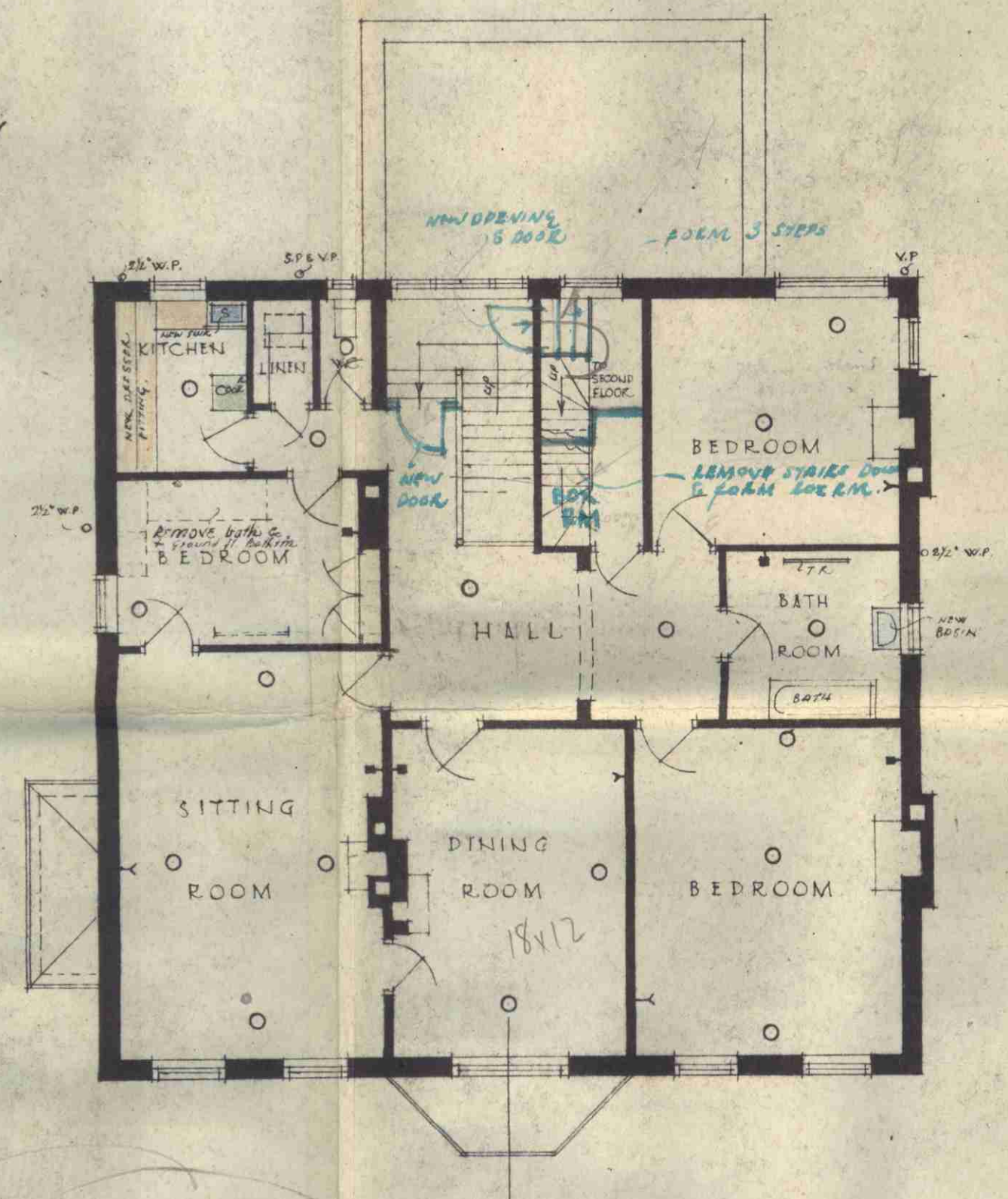
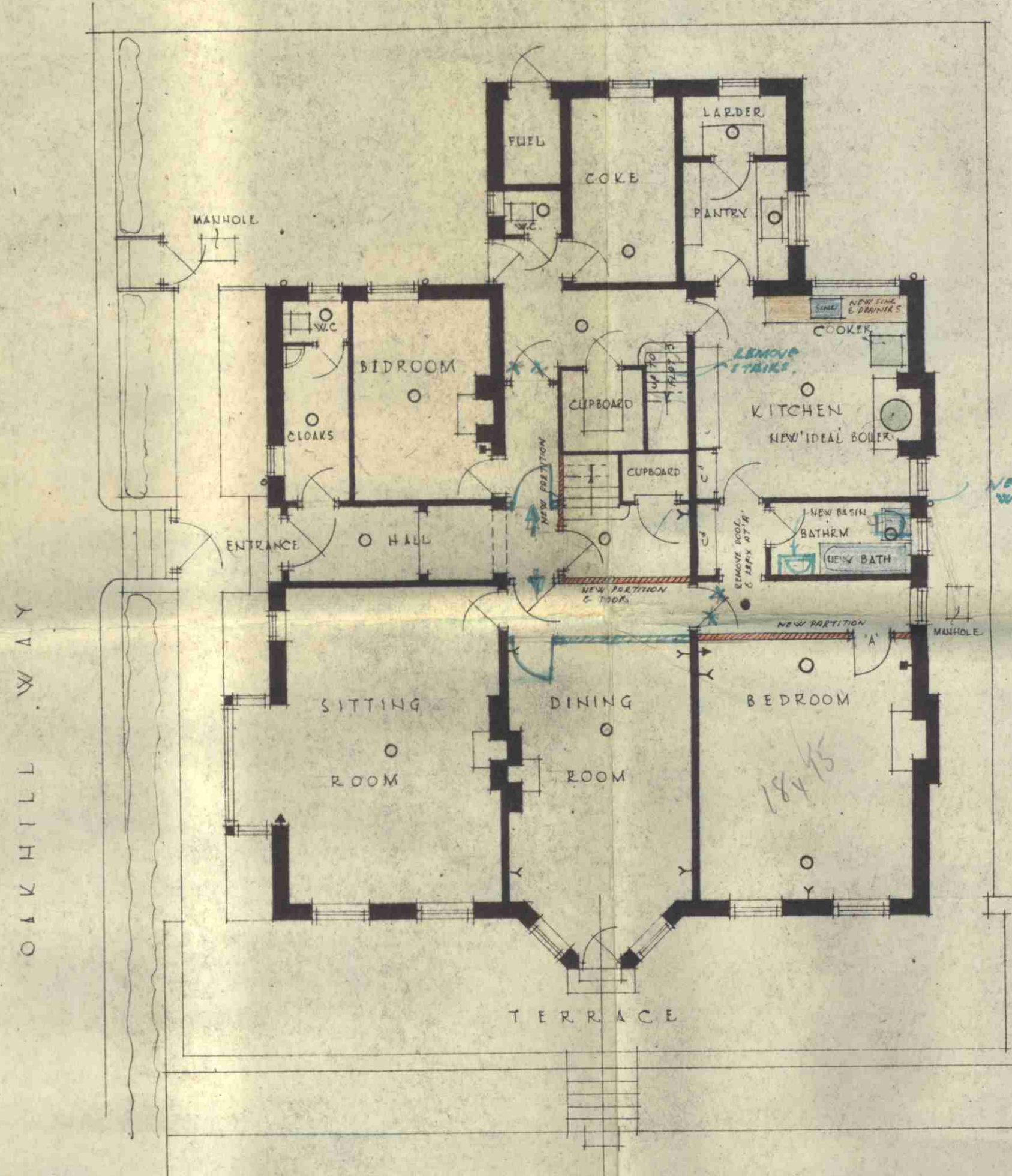


29/03



- EXISTING PENDANTS
- Y " LIGHT PLUGS.
- ⊥ " POWER "
- ⊥ " THERMOSTAT & SWITCH.
- ⊥ " NEW PENDANT
- ⊥ " POWER PLUG.
- ⊥ " LIGHT "



15 dwellings on 65 premises

SCALE: 7/8" EQUALS 1'-0"

GROUND FLOOR PLAN (1)

FIRST FLOOR PLAN (2)

PROPOSED CONVERSION OF No. 22 REDINGTON RD. HAMPSTEAD. N.W. 3.

SECOND FLOOR PLAN

PRESENTED TO
 5233 13 SEP 1946
 TOWN PLANNING
 COMMITTEE.

ARCHITECT I.O.P.
 No. 003140
 SNOW
 25 JUL 1946

ACWORTH & MONTAGU, M.A.L./F.R.I.B.A.
 37 GORDON SQ. W.C.I. Chartered Architects.

DRAWING No 105/1