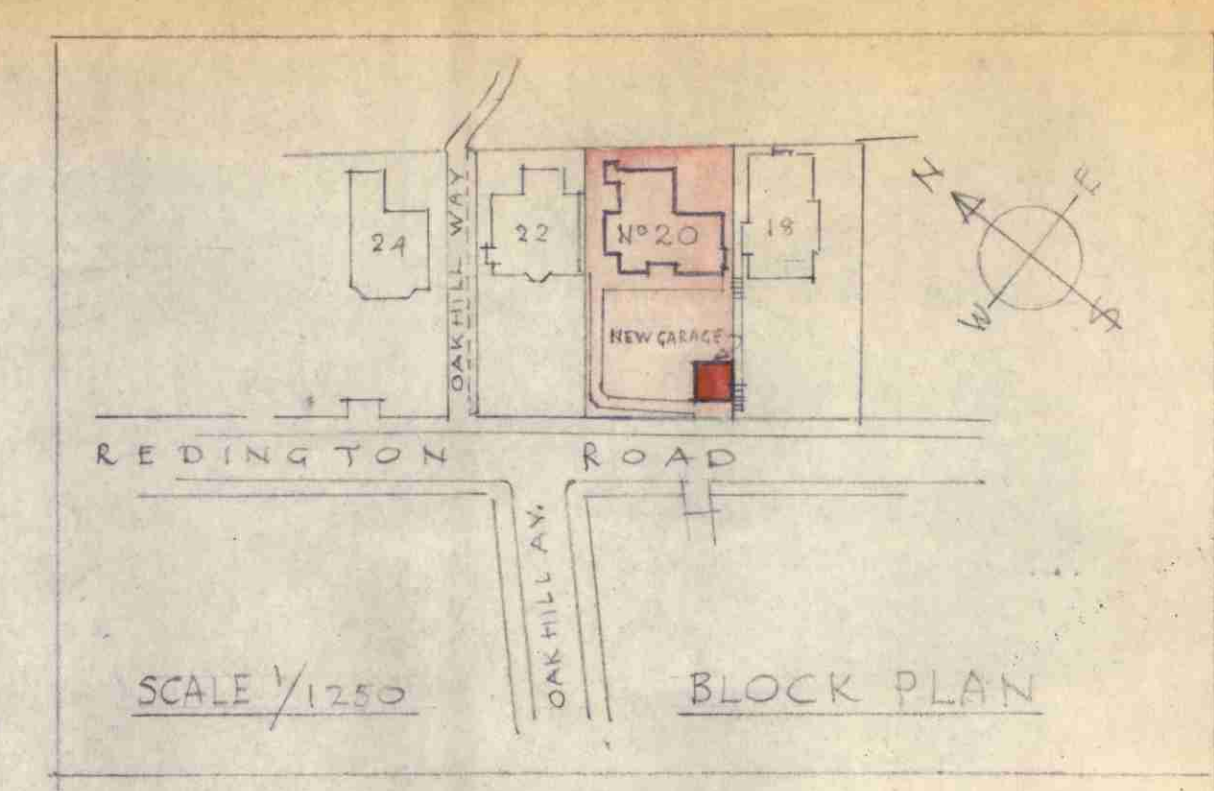
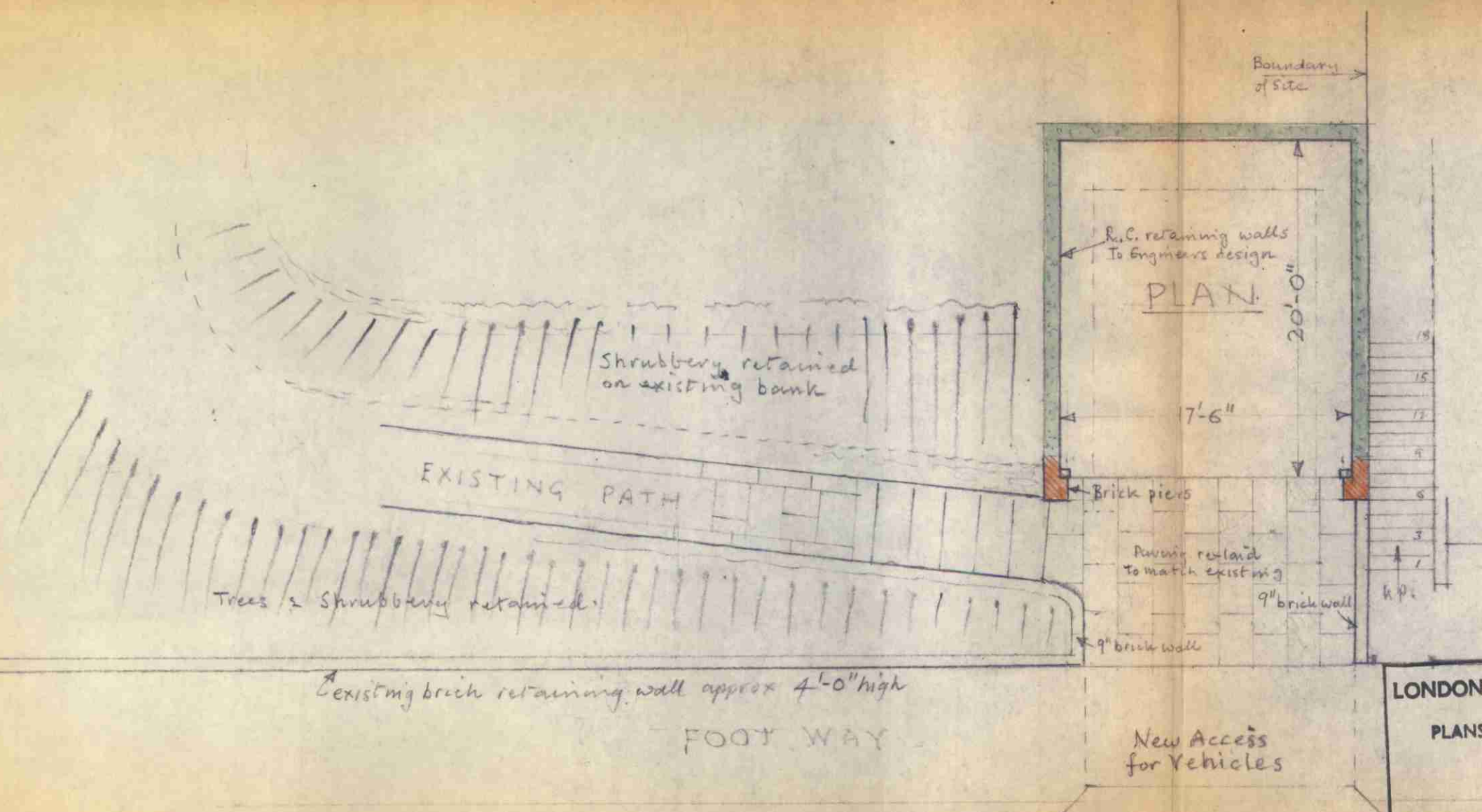
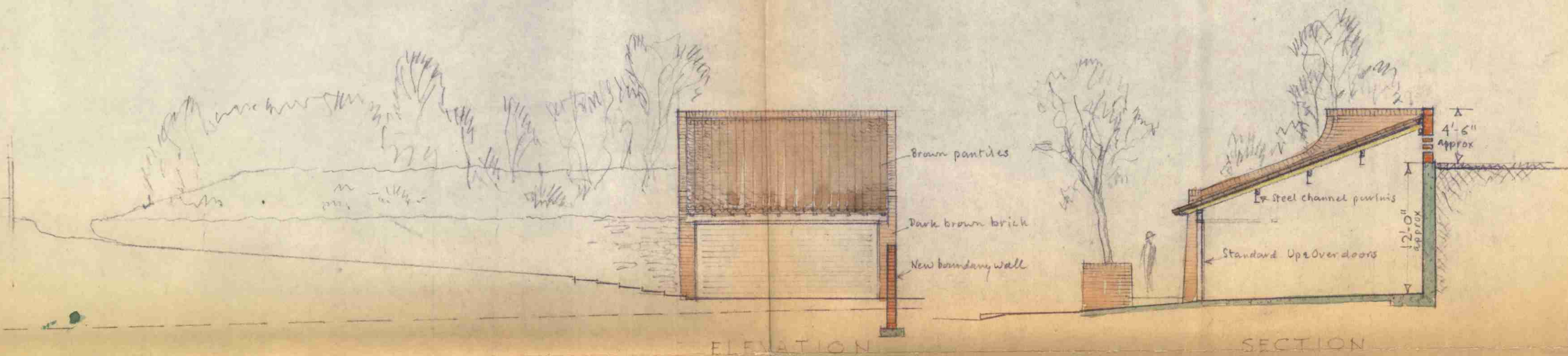


PROPOSED GARAGE AT NO 20, REDINGTON ROAD, N.W.3.

FOR MRS. EPSTEIN

SCALE 1/8" = 1'-0"



LONDON BOROUGH OF CAMDEN
 PLANS ~~APPROVED~~
 DISAPPROVED
 26 AUG 1971
 ON BEHALF OF THE COUNCIL

OTP/E5/9/2/11231
 J. BRANDON-JONES & ROBERT ASHTON
 ARCHITECTS
 2 REDINGTON ROAD, LONDON, N.W.3.