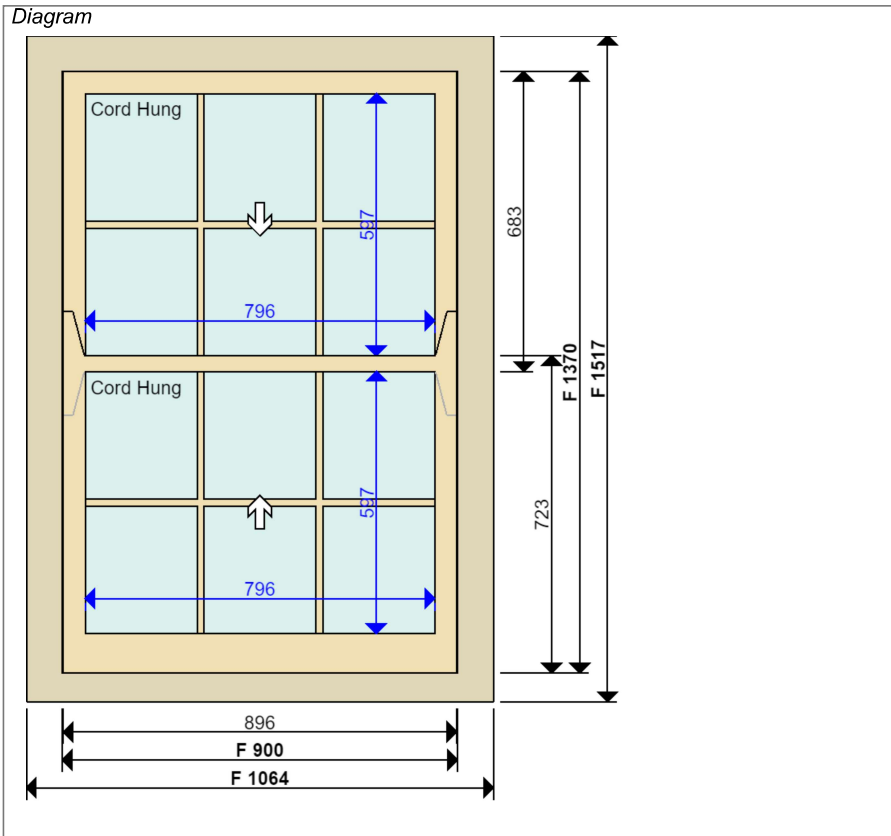


# JOINERY DETAIL SHEET

## 1 Complete New Cord Hung Single Box Sash Window (Non DocL)

<i>Customer</i> <b>Johnson</b>	<i>Job No</i> <b>D33021</b>	<i>Item No</i> <b>8</b>	<i>Sheet</i> <b>1 of 4</b>
-----------------------------------	--------------------------------	----------------------------	-------------------------------



*Sectional Details*

Frame in Kit Form	
Finished Frame Head	126 x 82 mm
Finished Frame Jamb	126 x 82 mm
Finished Cill	126 x 65 mm
[Barcode]	
Sash Head	50 mm
Sash Stile	50 mm
Sash Btm Rail (int)	90 mm Square
Sash Midrail	36 mm
Sash Thickness	36 mm
Top Sash Horn	Template Attached
Btm Sash Horn	Template Attached
[Barcode]	

*Location*  
**Third Floor Front Sitting Room**

Glazing Bar	16 mm with 4 mm Nib
Profile	Lambs Tongue
Moulding Cutter	6 x 8 with 6 mm shoulder
Glazing Rebate	8 x 20 mm

*Material*  
**Accoya sashes,  
Accoya frame, Hardwood cill**

*Quantity*  
**1**

*Ironmongery*  
4 x Pulley Wheel (Brass Wheel) PB

*Glazing*

Single Glazed	
Top 6.4mm Clear Laminate	
Btm 6.4mm Clear Laminate	
Dry Seal	White Tape Internally

*Paint Finish*

Internal	Standard White
External	Standard White

*Production Notes*  
KIT FORM FRAME DUE TO RESTRICTED STAIRWELL ACCESS.

22.1 lb, 23.6 lb (1 1/4 inch lead)      2 | 8 | 6 | 20

*Installation Notes*

Installed: Internally  
[Frame in Kit Form]

1. FIT ON SAME LINE AS EXISTING.
2. PLEASE USE BRACE BAR AND HARNESS, LOW WINDOW.
3. FIT ARCHITRAVES, PACKERS & WINDOWBOARD.
4. TRANSFER CATCH.

*Job Tracking* ⚠

Order received: 26-02-2019	Print date: 26-03-2019
Sold by: David Farebrother	Last modified by: Chris Jewiss
Surveyed by: Chris Jewiss	Last modified date: 26-03-2019

Internal Access:	Brace Bar & Harness
Cable Alarm:	Customer to Remove

JOHNSON

JOB NO: 33021

SHEET 2 OF 4

Drawn by	C JEWISS
Scale	1:10 at A3
Issue No	01
Date:	MAR 2019

Material: See sheet 1

Finish - Int: See sheet 1  
Ext: See sheet 1

Glass - See sheet 1

The Sash Window Workshop  
4 Kiln lane,  
Bracknell,  
Berkshire RG12 1NA  
tel: +44 (0)1344 868668  
fax: +44 (0)1344 868858  
email: jewissc@sashwindow.com

SECOND/THIRD FLOOR  
FRONT BEDROOM 2/  
SITTING ROOM

ITEM 6 & 8

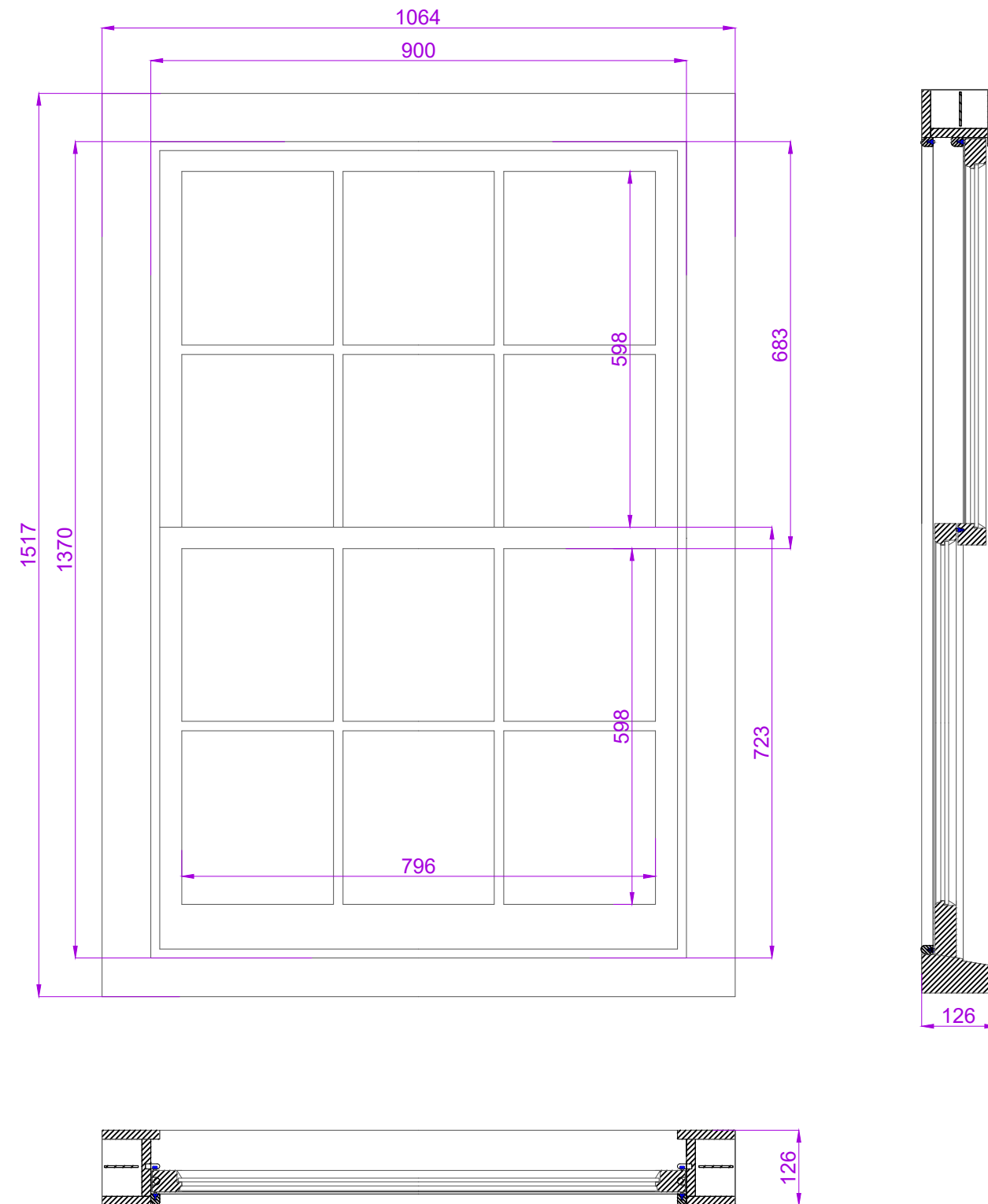
0 METRIC SCALE 1:10 ON A3

500mm

1000mm

# INTERNALLY VIEWED

SCALE 1:10 ON A3



JOHNSON

JOB NO: 33021

SHEET 3 OF 4

Drawn by	C JEWISS
Scale	1:1 at A3
Issue No	01
Date:	MAR 2019

Material: See sheet 1

Finish - Int:See sheet 1  
Ext:See sheet 1

Glass - See sheet 1

The Sash Window Workshop  
4 Kiln lane,  
Bracknell,  
Berkshire RG12 1NA  
tel: +44 (0)1344 868668  
fax: +44 (0)1344 868858  
email: jewissc@sashwindow.com

SECOND/THIRD FLOOR  
FRONT BEDROOM 2/  
SITTING ROOM

ITEM 6 & 8

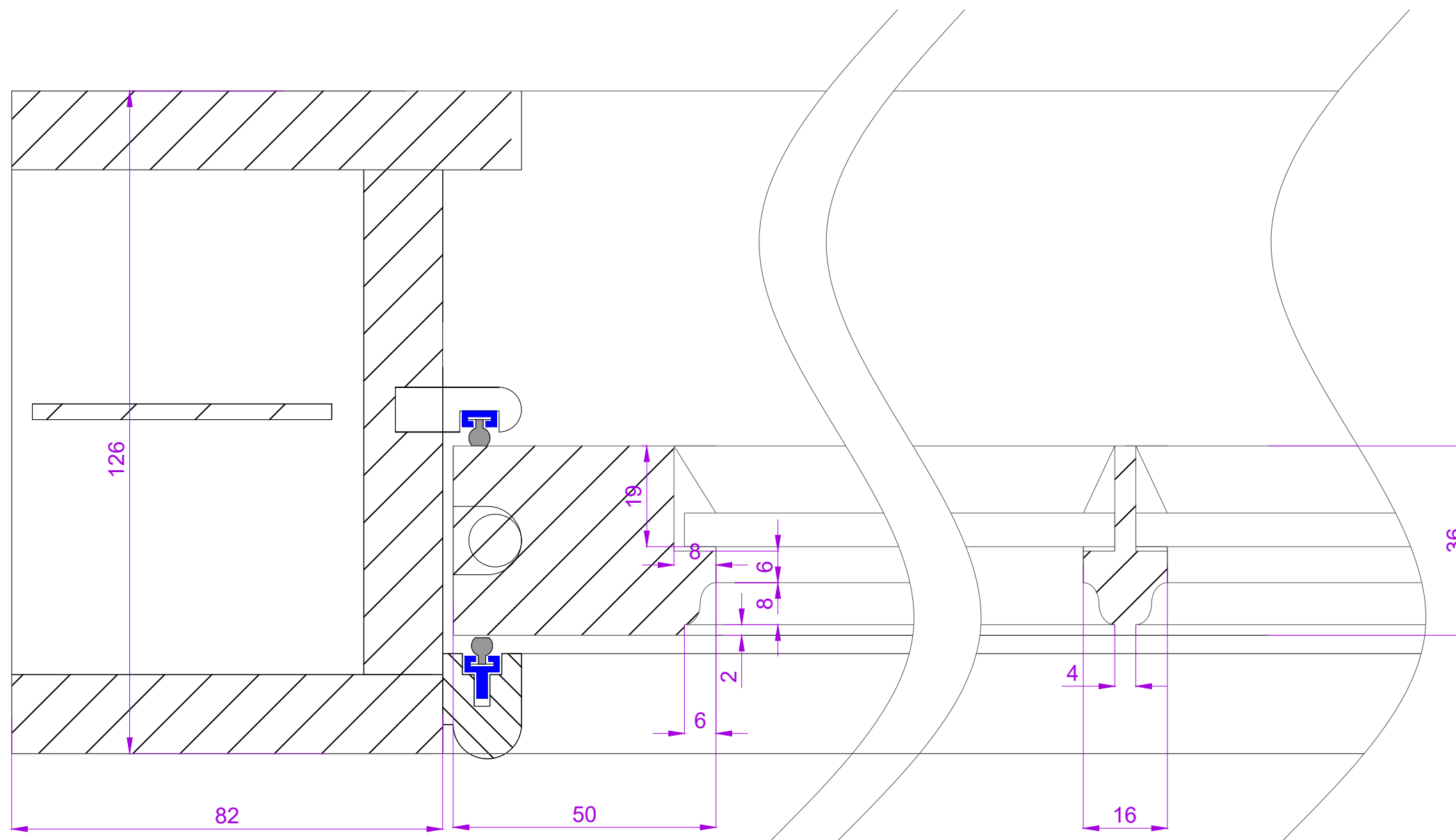
0 METRIC SCALE 1:1 ON A3

50mm

100mm

### SECTION THROUGH BOX FRAME & GLAZING BAR

SCALE 1:10 ON A3



JOHNSON

JOB NO: 33021

SHEET 4 OF 4

Drawn by	C JEWISS
Scale	1:1 at A3
Issue No	01
Date:	MAR 2019

Material: See sheet 1

Finish - Int:See sheet 1  
Ext:See sheet 1

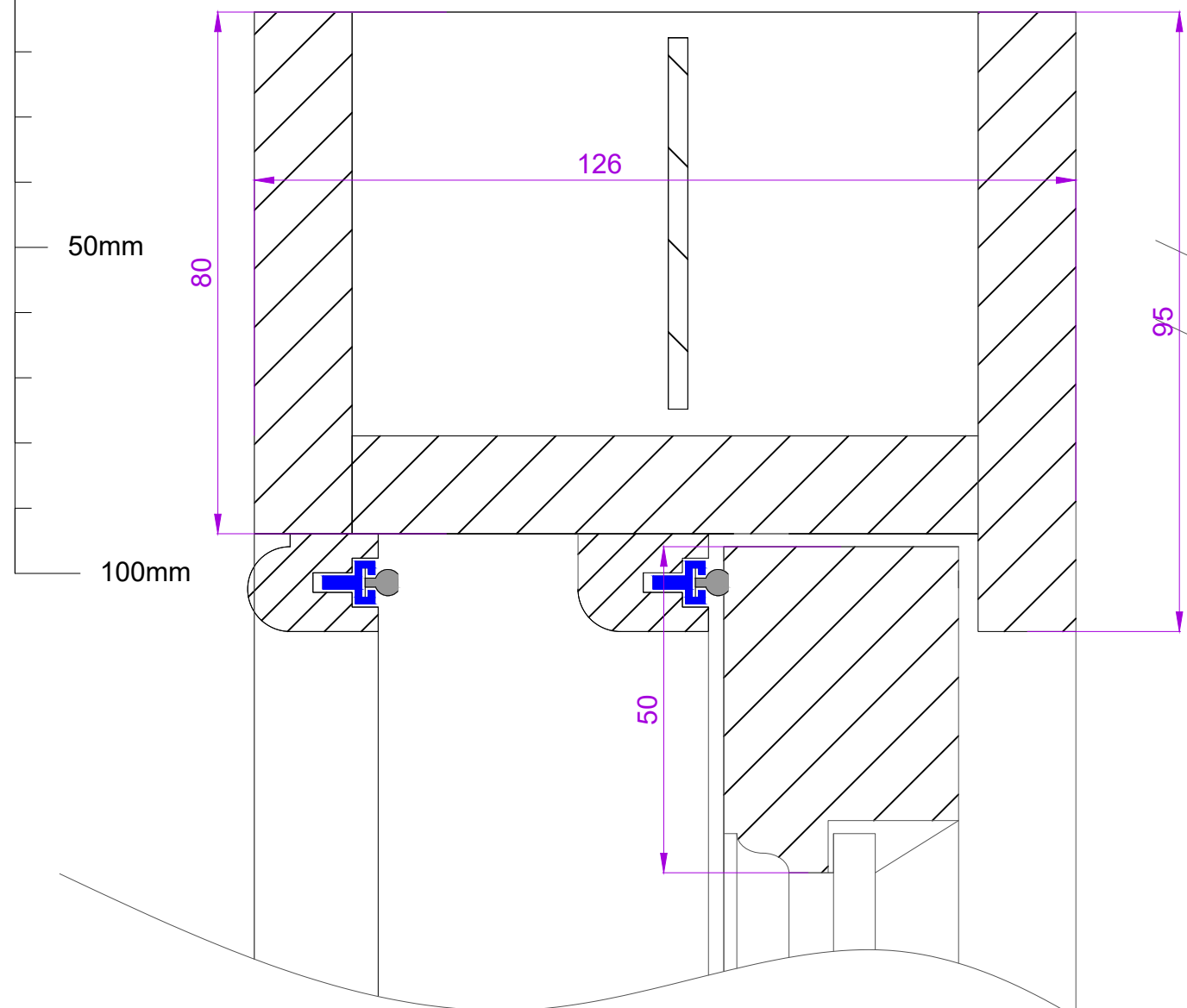
Glass - See sheet 1

The Sash Window Workshop  
4 Kiln lane,  
Bracknell,  
Berkshire RG12 1NA  
tel: +44 (0)1344 868668  
fax: +44 (0)1344 868858  
email: jewissc@sashwindow.com

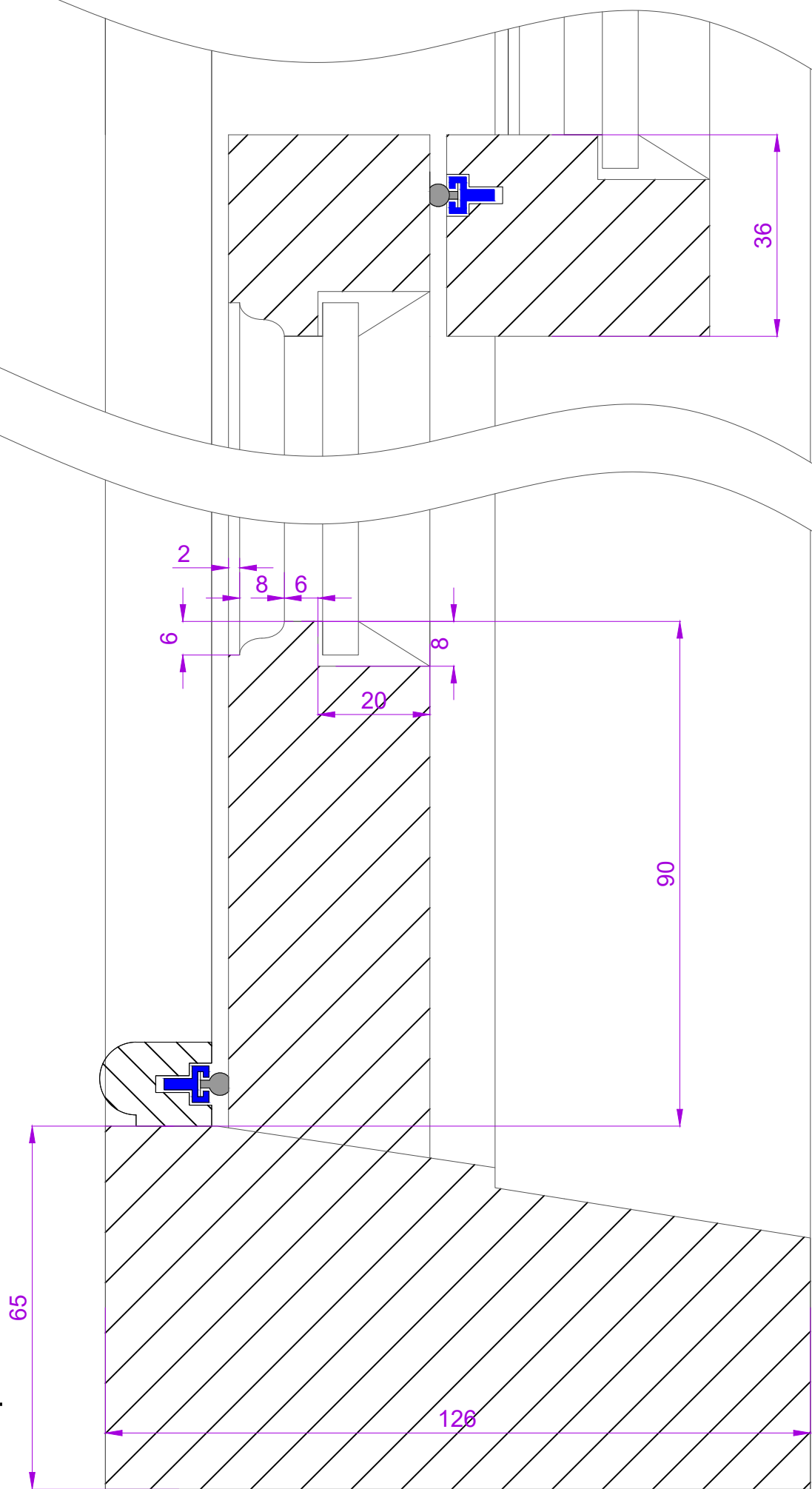
SECOND/THIRD FLOOR  
FRONT BEDROOM 2/  
SITTING ROOM

ITEM 6 & 8

0 METRIC SCALE 1:1 ON A3



SECTION THROUGH BOX HEAD  
SCALE 1:10 ON A3



SECTION THROUGH MEETING RAIL  
AND CILL  
SCALE 1:10 ON A3