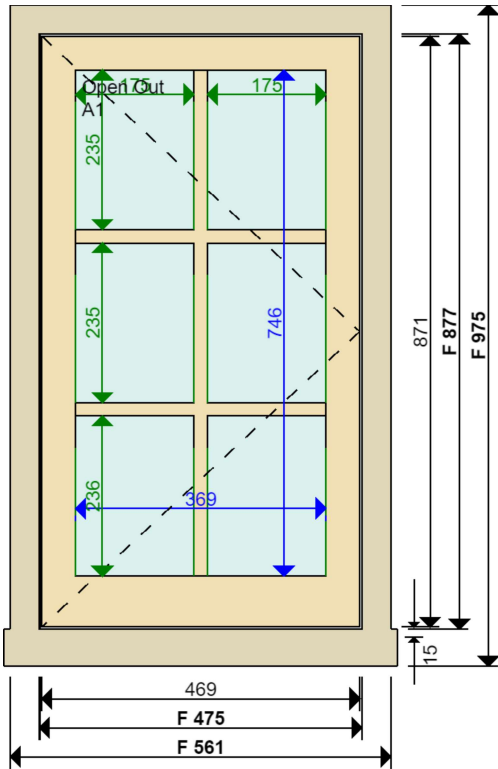


# JOINERY DETAIL SHEET

## 1 Complete New Flush Casement Window (Non DocL)

Customer	<b>Johnson</b>	Job No	<b>D33021</b>	Item No	<b>4</b>	Sheet	<b>1 of 3</b>
----------	----------------	--------	---------------	---------	----------	-------	---------------

Diagram



Sectional Details

Frame Stop	Ovolo
Finished Frame Head	93 x 58 mm
Finished Frame Jamb	93 x 58 mm
Finished Cill	93 x 70 mm (10 mm horn)
Sash Head	50 mm
Sash Stile	50 mm
Sash Btm Rail (int)	75 mm Stepped
Sash Thickness	48 mm

Location

**First floor front bathroom**

Material

**Accoya sashes,  
Accoya frame, Hardwood cill**

Quantity

**1**

Ironmongery

1 x Casement Stay Pin Locking BA  
1 x Casement Window Lock White  
1 x Egress Casement Lock BA Matt Black  
2 x Hinge Butt SC 3 inch  
1 x Lock Chubb Window Key

Glazing

Single Glazed  
Case 4mm Stippolyte Float

Dry Seal

White Tape Internally

Paint Finish

Internal Standard White  
External Standard White

Production Notes

Installation Notes

Installed: Externally  
1. TRY NOT TO DAMAGE TILES ON REMOVAL OF FRAME.  
2. CEMENT FILLET EXTERNALLY. ACRYLIC SEAL INTERNALLY.  
3. FIT DRIP.  
4. TRANSFER STAY AND HANDLE.

2 | 13 | 16 | 17

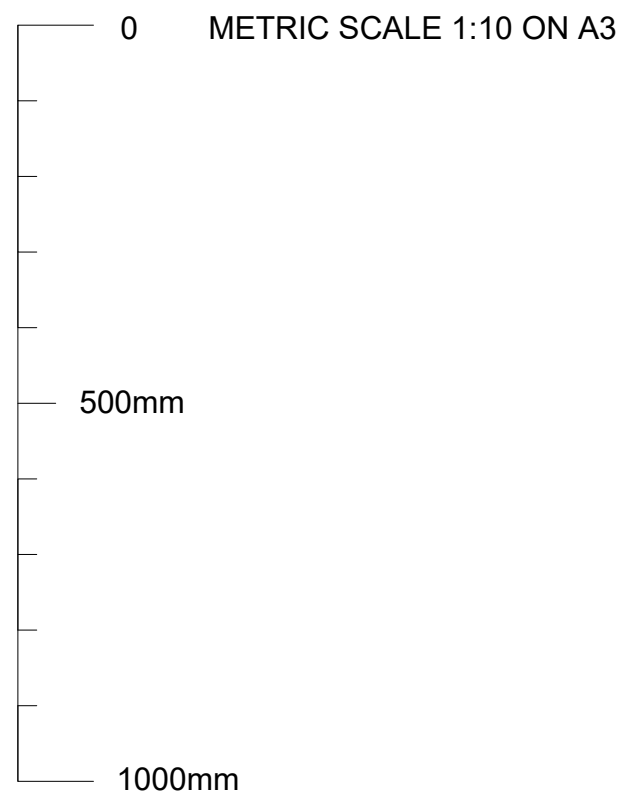
Job Tracking

Order received: 26-02-2019  
Sold by: David Farebrother  
Surveyed by: Chris Jewiss

Print date: 23-04-2019  
Last modified by: Chris Jewiss  
Last modified date: 23-04-2019

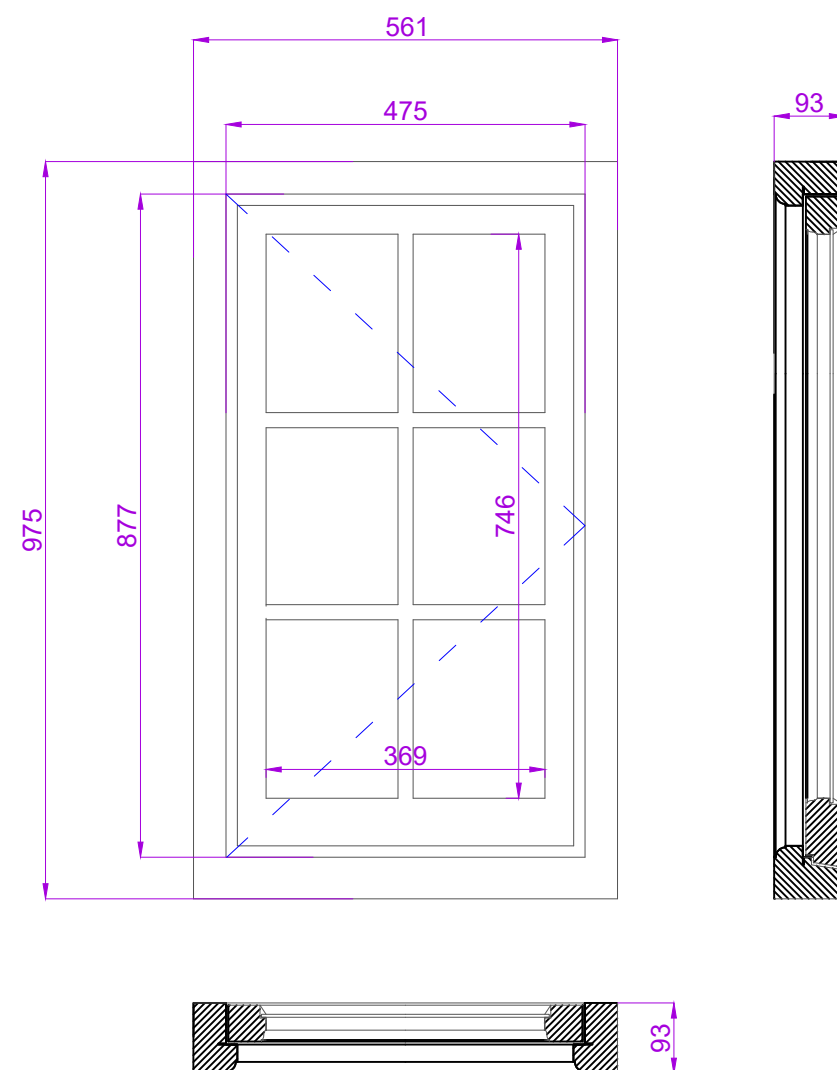
Internal Hazard:  
External Access:

Item Over WC  
Scaffold by Customer

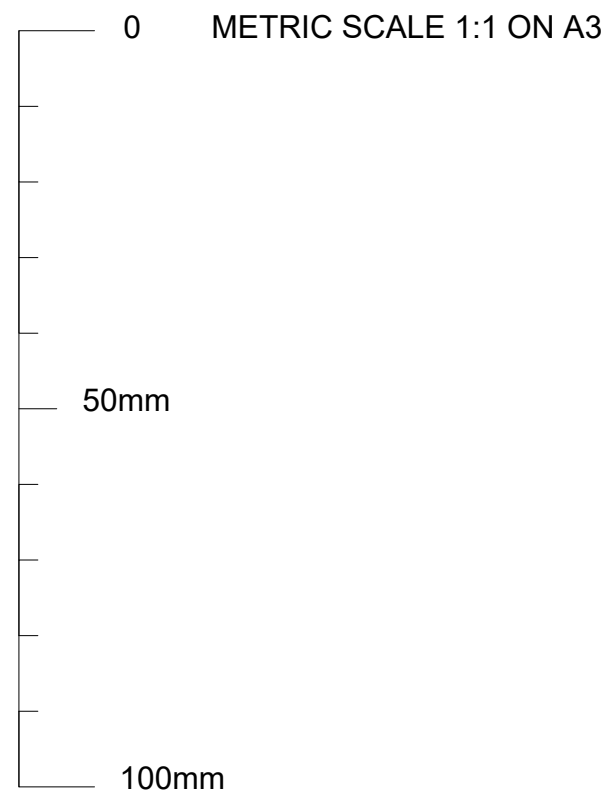


INTERNALLY VIEWED

SCALE 1:10 ON A3



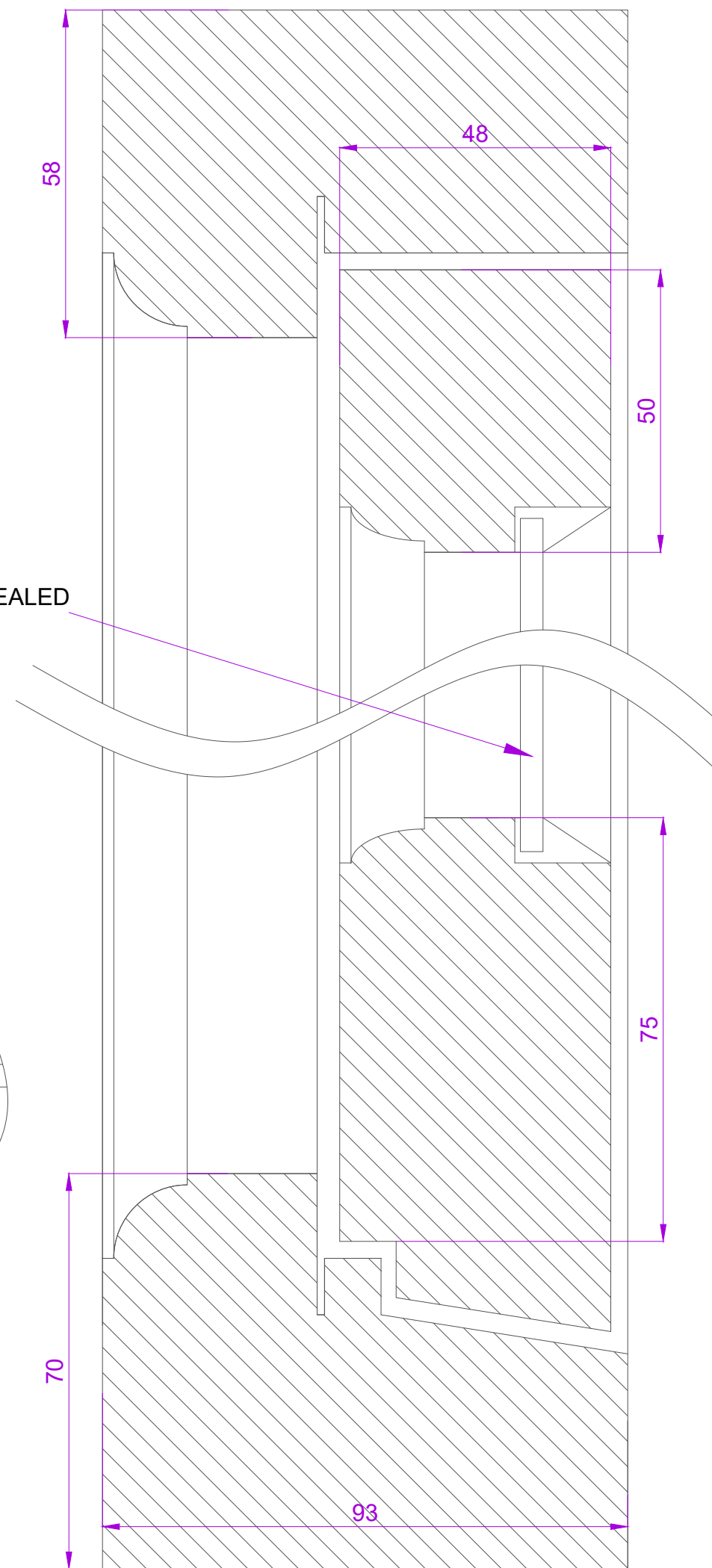
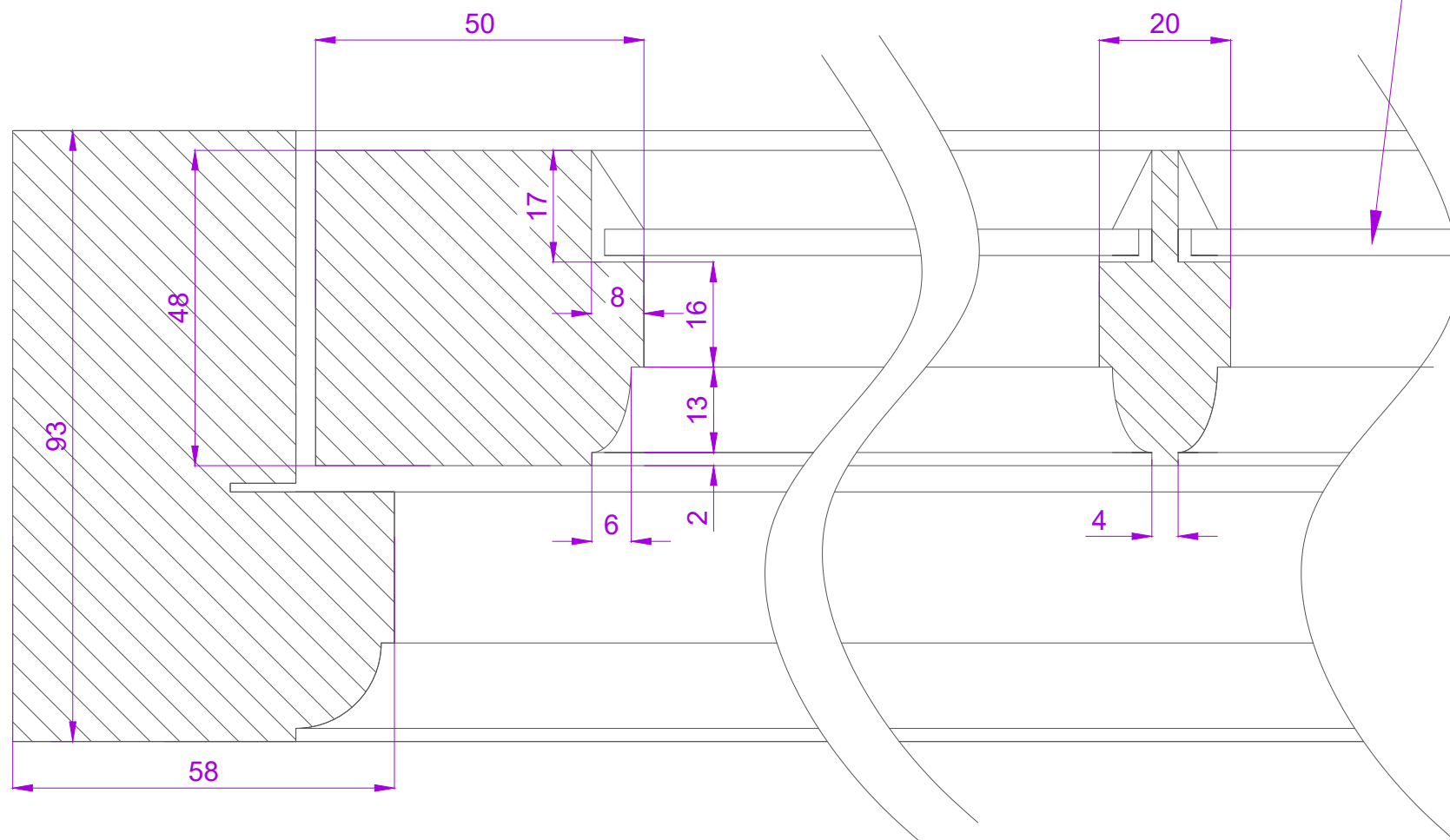
JOHNSON	
JOB NO: 33021	
SHEET 2 OF 3	
Drawn by	C JEWISS
Scale	1:10 at A3
Issue No	01
Date:	MAR 2019
Material: See sheet 1	
Finish - Int:See sheet 1	
Ext:See sheet 1	
Cill Finish:	
Glass - See sheet 1	
The Sash Window Workshop 4 Kiln lane, Bracknell, Berkshire RG12 1NA tel: +44 (0)1344 868668 fax: +44 (0)1344 868858 email: jewissc@sashwindow.com	
FIRST FLOOR FRONT ELEVATION BATHROOM	
ITEM 4	



SECTION THROUGH FRAME HEAD  
AND CILL  
SCALE 1:1 ON A3

4mm STIPPOLYTE FLOAT GLASS DRY SEALED

SECTION THROUGH FRAME JAMB  
AND GLAZING BAR  
SCALE 1:1 ON A3



JOHNSON

JOB NO: 33021

SHEET 3 OF 3

Drawn by	C JEWISS
Scale	1:1 at A3
Issue No	01
Date:	MAR 2019

Material: See sheet 1

Finish - Int:See sheet 1  
Ext:See sheet 1

Cill Finish:

Glass - See sheet 1

The Sash Window Workshop  
4 Kiln lane,  
Bracknell,  
Berkshire RG12 1NA  
tel: +44 (0)1344 868668  
fax: +44 (0)1344 868858  
email: jewissc@sashwindow.com

FIRST FLOOR  
FRONT/RHS ELEVATION  
BATHROOM

ITEM 4 & 5