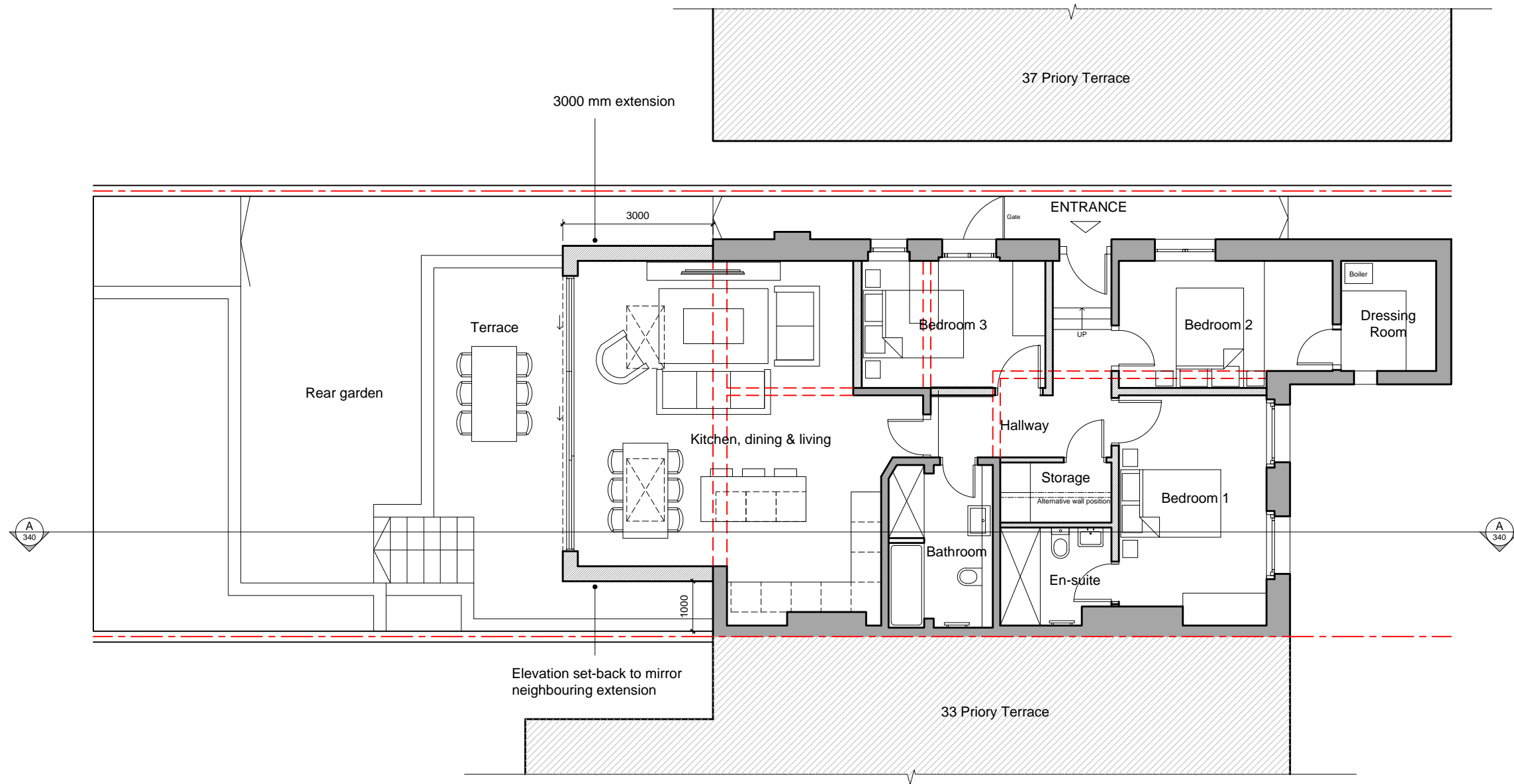


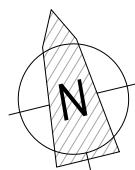
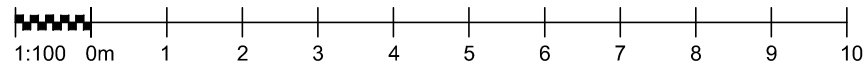
Key

- New Walls
- Walls to be demolished



Proposed Floor Plan
Scale 1:100

REV	DATE	BY	DESCRIPTION



NIGEL BIRD ARCHITECTS
CHARTERED ARCHITECTS ENGINEERS & INTERIORS DESIGNERS

Henry Wood House 2 Riding House Street London W1W 7FA
Telephone: 0203 770 7571 E-Mail: nigel.bird@nigelbirdarchitects.co.uk www.nigelbirdarchitects.co.uk

Project: Garden Flat, 35 Priory Terrace NW6 Dwg Name: Proposed Floor Plan

RIBA Stage: Date: Jan 2019 Scale: 1:100 at A3 Dwg no: 1624.310 Rev:

