

04.01 External Lighting to Entrances - Elevations



01 NW Elevation of Upper Ground Entrance Serving A09W - 1:100

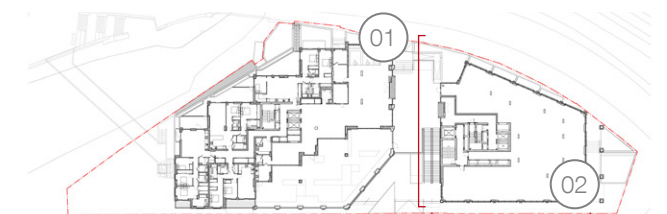


02 SW Elevation of Lower Ground Entrance Serving A03W & A08W - 1:100

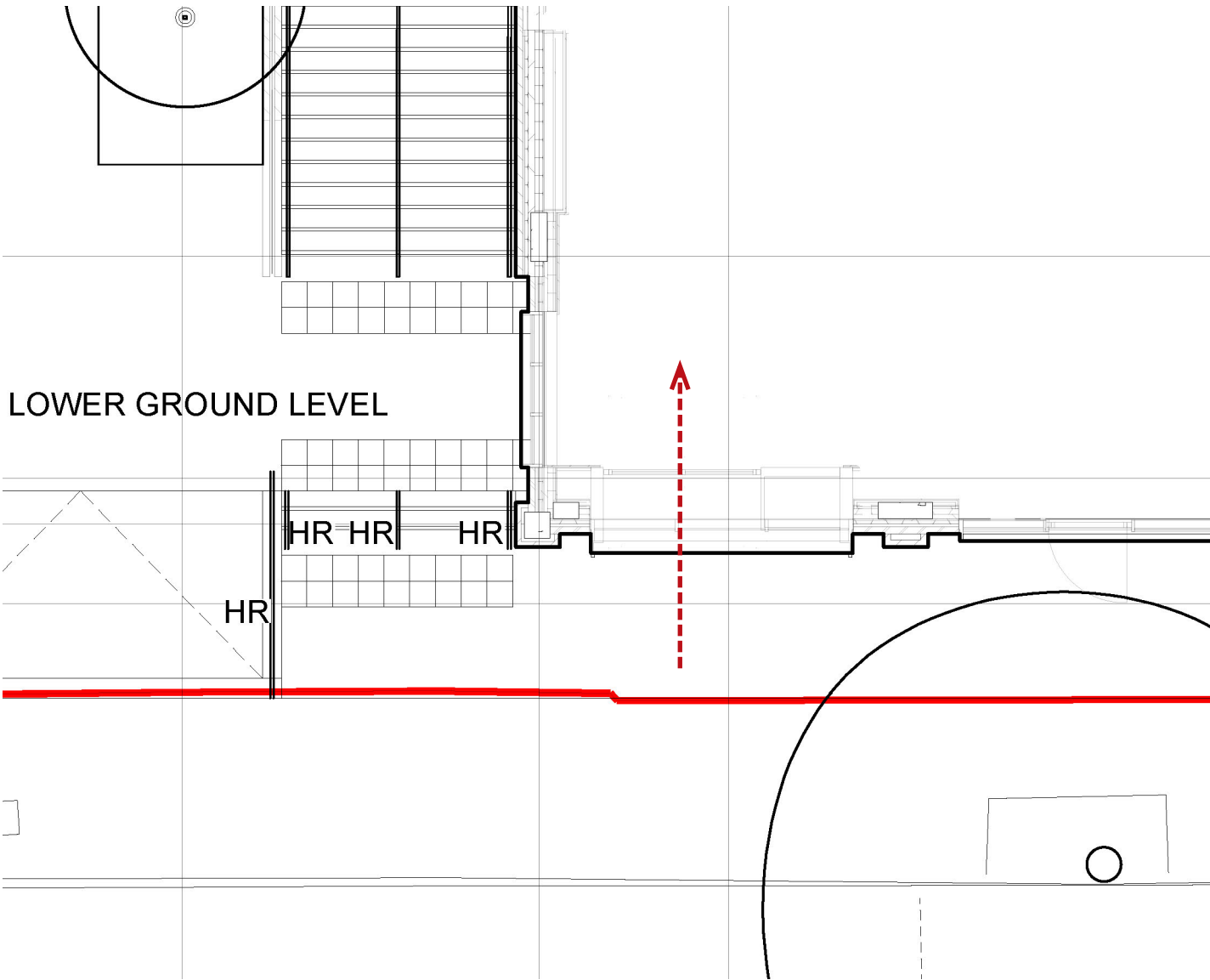
The minimum requirements of Part M Section 3.9 (2015 Edition Incorporating 2016 Comments) specifies “external parts of the approach route are illuminated by fully diffused lighting activated automatically by ... timer or detecting motion.” To comply, lighting will be fixed to the wall either side of entrances and incorporated into the landscaping.

External lighting is fixed at heights of 2500 AFFL at upper ground level and 2775 AFFL at lower ground level.

- Wall Mounted Lamp 1869LM
- LED strip lighting integrated into handrail

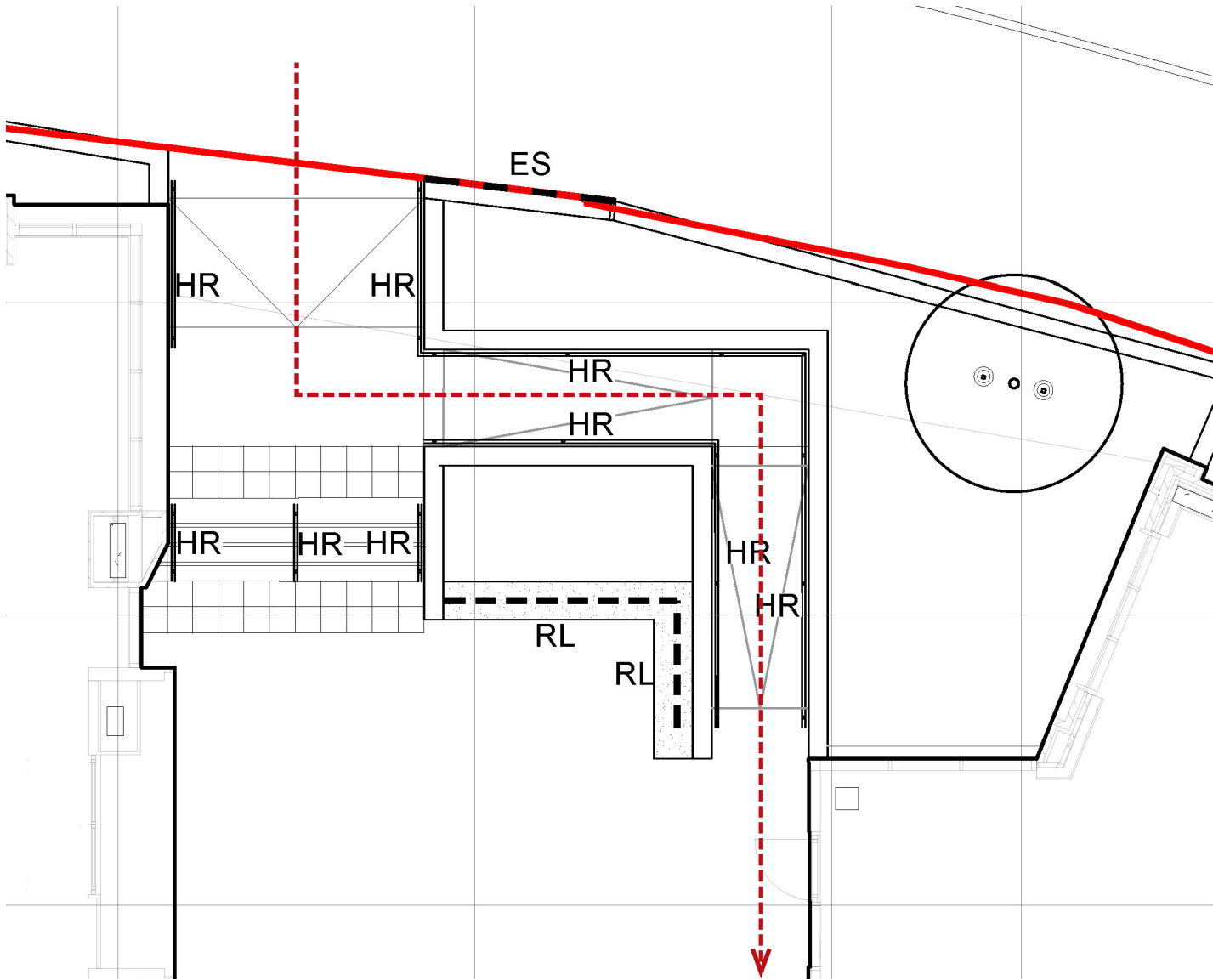


04.02 External Lighting Incorporated in Landscape Design - Plan



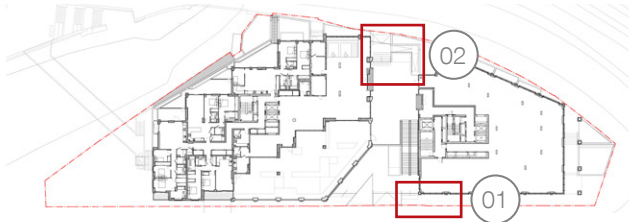
01 Lower Ground Level Approach Lighting - 1:100

The landscape design by LDA has integrated lighting along the approach route to the entrances.



02 Upper Ground Level Approach Lighting - 1:100

- Access Route
- HR LED integrated into handrail, 900m height.
- RL Recessed LED lighting in bespoke furniture.



05.00

Appendix

All dimensions are in mm unless otherwise stated
All dimensions to be verified on site before proceeding with the work
Any discrepancies to be notified in writing to Architect immediately
All boundaries indicative only and to be confirmed by others

NOTE

Contractor drawings and samples to be submitted for approval prior to fabrication. Any discrepancies must be reported to the Architect.

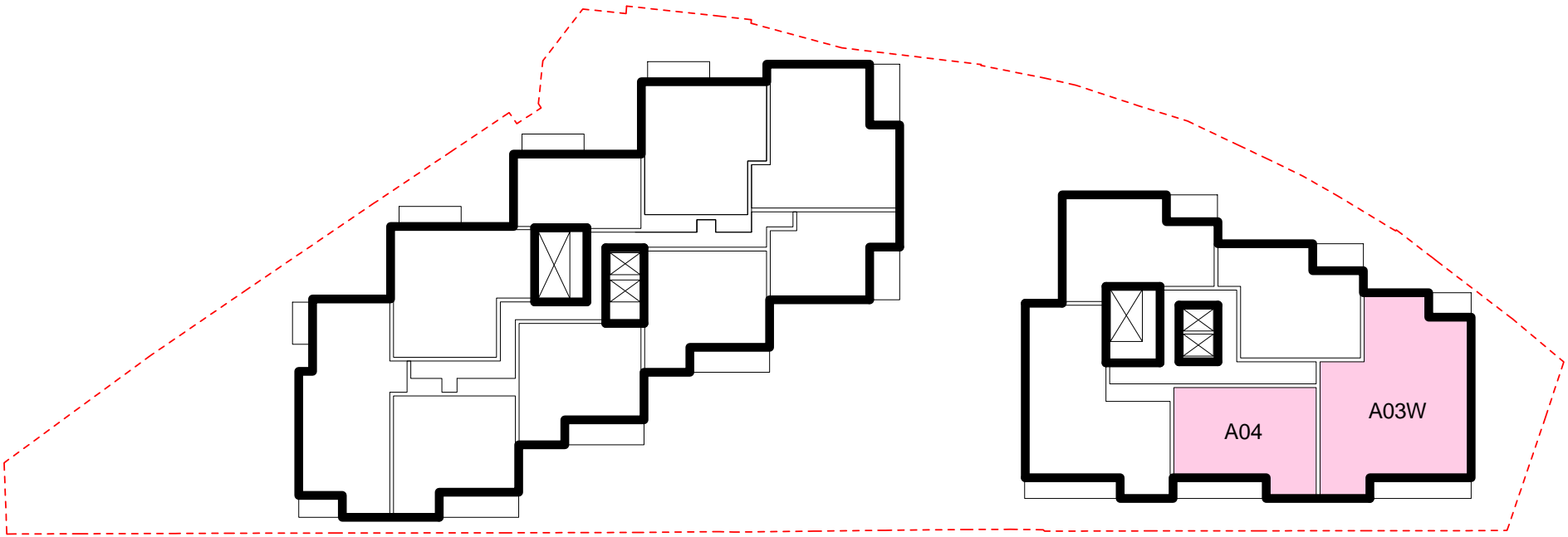
All dimensions are in mm unless stated otherwise
All dimensions to be site checked prior to fabrication/construction

. For Frame Dimensions refer to window schedules 01 SC 3100 Series.
. For Door and Windows incorporated in one of the Sets, please refer to 01 SC 3100 300 Series for S/O and Frame dimensions.

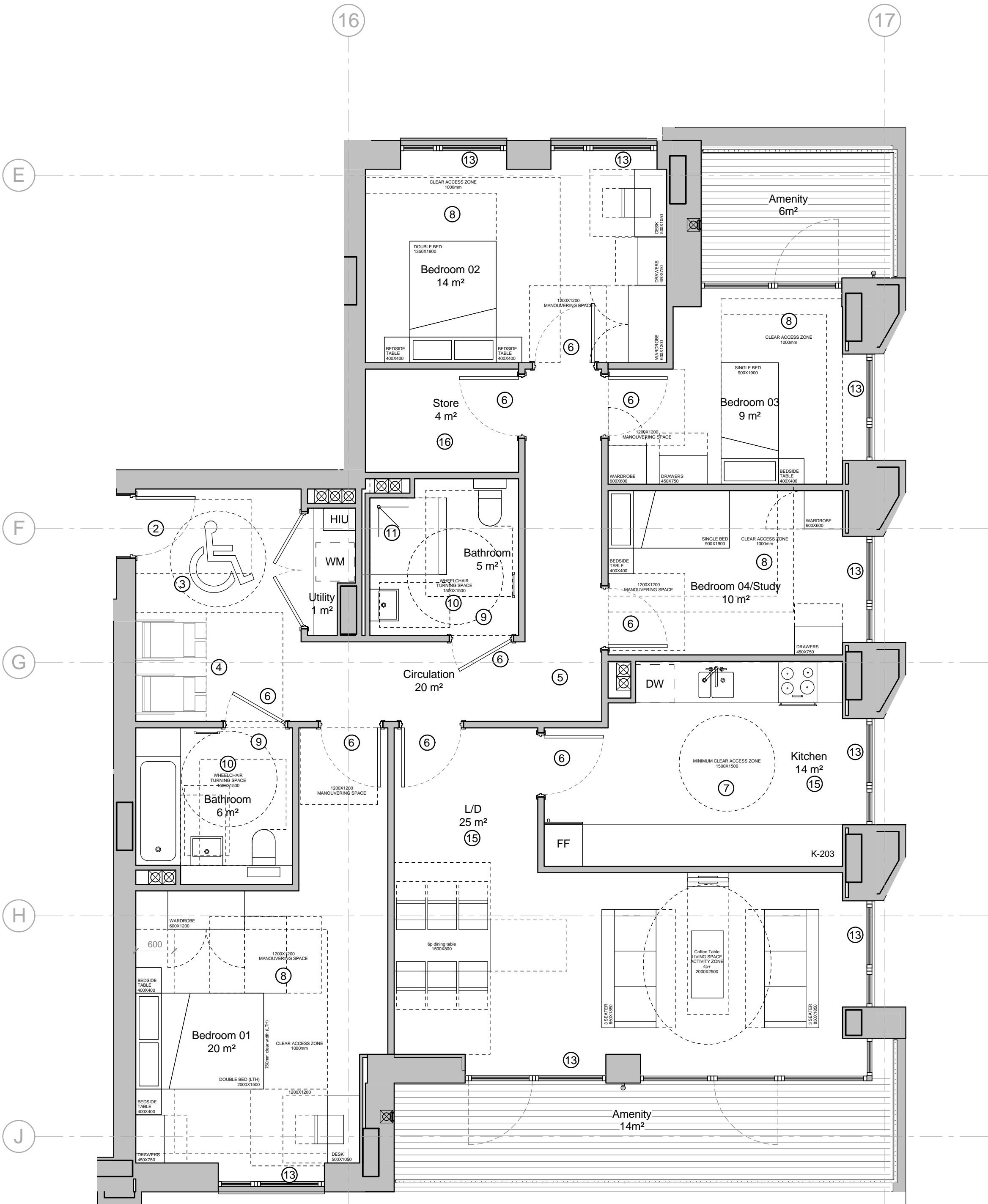
SSL – Structural Slab Level
SFL – Screed Floor Level – Top of the Screed
FFL – Finish Floor Level (including finish eg: carpet or tiles)

This drawing must be read in conjunction with all relevant Specifications and Consultant Drawings. Specific drawing information can be found under the following drawing series:

0000	Site	3200	Internal Openings
0010	GA Plans & Reference Plans	3400	Metal Works
0020	GA Elevations	3500	Suspended Ceilings
0030	GA Sections	3600	Balconies
0040	3D Views	4300	Floors
0400	Fire Strategy	5000	Mainly Ducted
1000	Substructure	6600	Mainly Electrical
2000	Structure Coordination	7300	Kitchen
2100	External Walls	7400	Bathrooms
2200	Internal Walls	7500	Cleaning and Maintenance
2400	Stairs and Ramps	7600	Storage and Cupboards
2500	Concrete Finishes	7700	Entrances and Lobbies
2700	Roof	SCH31	Residential Interior Finishes
3000	Curtain Walling	SCH34	Communal Interior Finishes
3100	External Openings		



Key Plan



01 - Apartment Type A03W AP

Access to and Use of Buildings Approved Document M (2015 edition incorporating 2016 amendments)		Unit Compliance
Design Requirement		
1	Access to the WC and other accommodation within the entrance storey is step-free and the dwelling is designed to have the potential for step-free access to all other parts. (Part M4(3) p23)	✓
2	The entrance door (or gate) has a minimum clear opening width of 850mm. (Part M4(3) p27) The landing is covered to a minimum width and depth of 1200mm. Lighting is provided which uses fully diffused luminaires.(Part M4(3) p27) A minimum 300mm nib is provided to the leading edge of the door and the extra width created by this nib is maintained for a minimum of 1800mm beyond it. A minimum 200mm nib is provided to the following edge of the door. (Part M4(3) p27)	✓
3	There is a minimum 1500mm clear turning circle inside the entrance area, in front of the door when closed. (Part M4(3) p30)	✓
4	A storage and transfer space which complies with the following: A minimum 1100mm deep by 1700mm wide space is available on the entrance storey, preferably close to the principal private entrance; is accessible from a space that has a minimum clear width of 1200mm. (Part M4(3) p33-34)	✓
5	The minimum clear width of every hallway, approach or landing is 1050mm. Where the approach to a doorway is not head on, the minimum clear width is 1200mm Any localised obstruction, such as a radiator, does not occur opposite or close to a doorway or at a change of direction. (Part M4(3) p32)	✓
6	Every door has a minimum clear opening width of 850mm, irrespective of the direction of entry. A minimum 300mm nib is provided to the leading edge and a minimum 200mm nib is provided to the following edge or every door. (Part M4(3) p32)	✓
7	There is a minimum clear access zone 1500mm wide in front of, and between, all kitchen units and appliances. (Part M4(3) p36)	✓
8	Every bedroom can provide a minimum 1200 by 1200 manoeuvring space inside the doorway, clear of the bed and the door (when the door is in the closed position). The principal double bedroom can provide a minimum 1000mm wide clear access zone to both sides and the foot of the bed. Every other double bedroom can provide a minimum clear access zone to one side and the front of all furniture. All single and twin bedrooms provide a minimum clear access route to one side of the bed and all furniture. (Part M4(3) p39)	✓
9	Where sanitary facilities are wheelchair accessible, basins and sinks should be wall hung and the clear zone beneath basins, services and pedestals is maximised to enable wheelchair users to approach. (Part M4(3) p40) Doors must be capable of opening outwards. (Part M4(3) p40)	✓
10	The bathroom provides a minimum 1500mm clear turning circle (Part M4(3) p46)	✓
11	Typical Minimum Sanitary Provision - 2 or 3 bedspaces - Bathroom with level access shower (Part M4(3) p41). Installed level access shower - Step-free area with no lips or upstands, suitable for showering with a floor laid to shallow falls towards a floor gully connected to the drainage system (Part M4(3) p52).	✓
12	The ceiling structure to every bedroom, bathrooms and WC/cloakrooms is strong enough to allow for the fitting of an overhead hoist capable of carrying a load of 200kg. (Part M4(3) p38 and p40)	✓
13	The handle to at least one window is 700-1000mm above floor level, unless the window is fitted with a remote opening device that is within this height range. Handles to all other windows are 450-1200mm above floor level (Part M4(3) p50).	✓
14	Minimum length of kitchen worktop, including fittings and appliances, to be fitted at completion for a wheelchair accessible dwelling: 2 bedspaces:6130mm, 6-8 bedspaces:8530mm (Part M4(3) p38).	✓
15	Minimum combined floor area for living, dining, and kitchen space: 2 bedspaces:25m², 6 bedspaces:33m² (Part M4(3) p36).	✓
16	Minimum area of built-in storage: 1 bedroom:1.5m², 4 bedrooms:3.0m² (Part M4(3) p34).	✓

-	21.03.19	Issued to the London Borough of Camden.	DH
REV	DATE	NOTES	INT

PLANNING

HUTCHINSON & PARTNERS

3.14 The Record Hall, 16-16A Baldwin's Garden, London, EC1N 7RJ
t. 020 3176 8196 e. info@hutchinsonandpartners.com
www.hutchinsonandpartners.com

JOB TITLE
Stanley Sidings, 101 Camley Street, Camden

DRAWING TITLE / LOCATION
UNIT PLAN LAYOUT - TYPE A03W

DRAWN BY DH	CHECKED GFV	SCALE 1:20 @ A1 / 1:40 @ A3	STATUS PLANNING
PROJECT 16022	DRAWING NO 01 AP 0400 015	REVISION -	

CLIENT



All dimensions are in mm unless otherwise stated
All dimensions to be verified on site before proceeding with the work
Any discrepancies to be notified in writing to Architect immediately
All boundaries indicative only and to be confirmed by others

NOTE

Contractor drawings and samples to be submitted for approval prior to fabrication. Any discrepancies must be reported to the Architect.

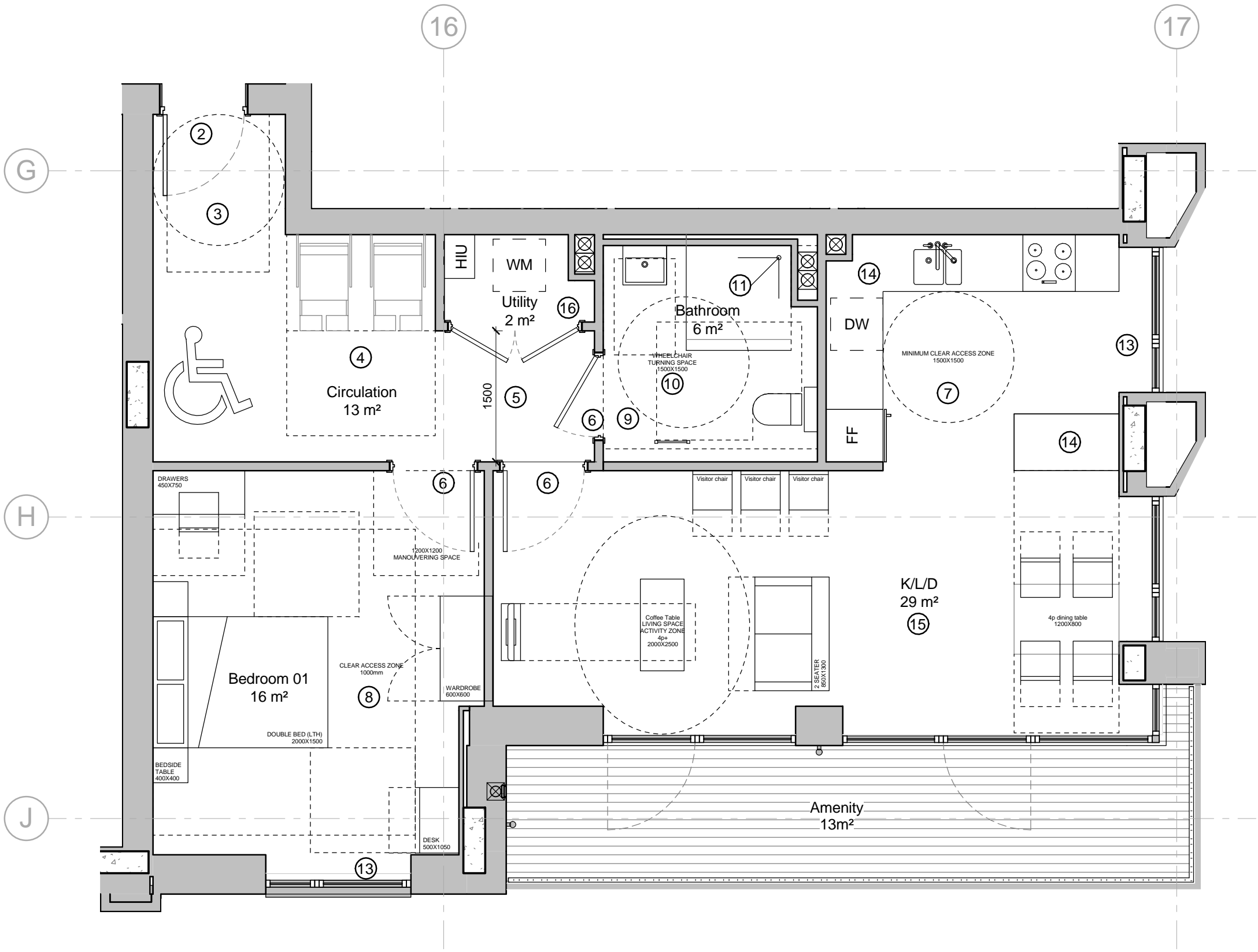
All dimensions are in mm unless stated otherwise
All dimensions to be site checked prior to fabrication/construction

. For Frame Dimensions refer to window schedules 01 SC 3100 Series.
. For Door and Windows incorporated in one of the Sets, please refer to 01 SC 3100 300 Series for S/O and Frame dimensions.

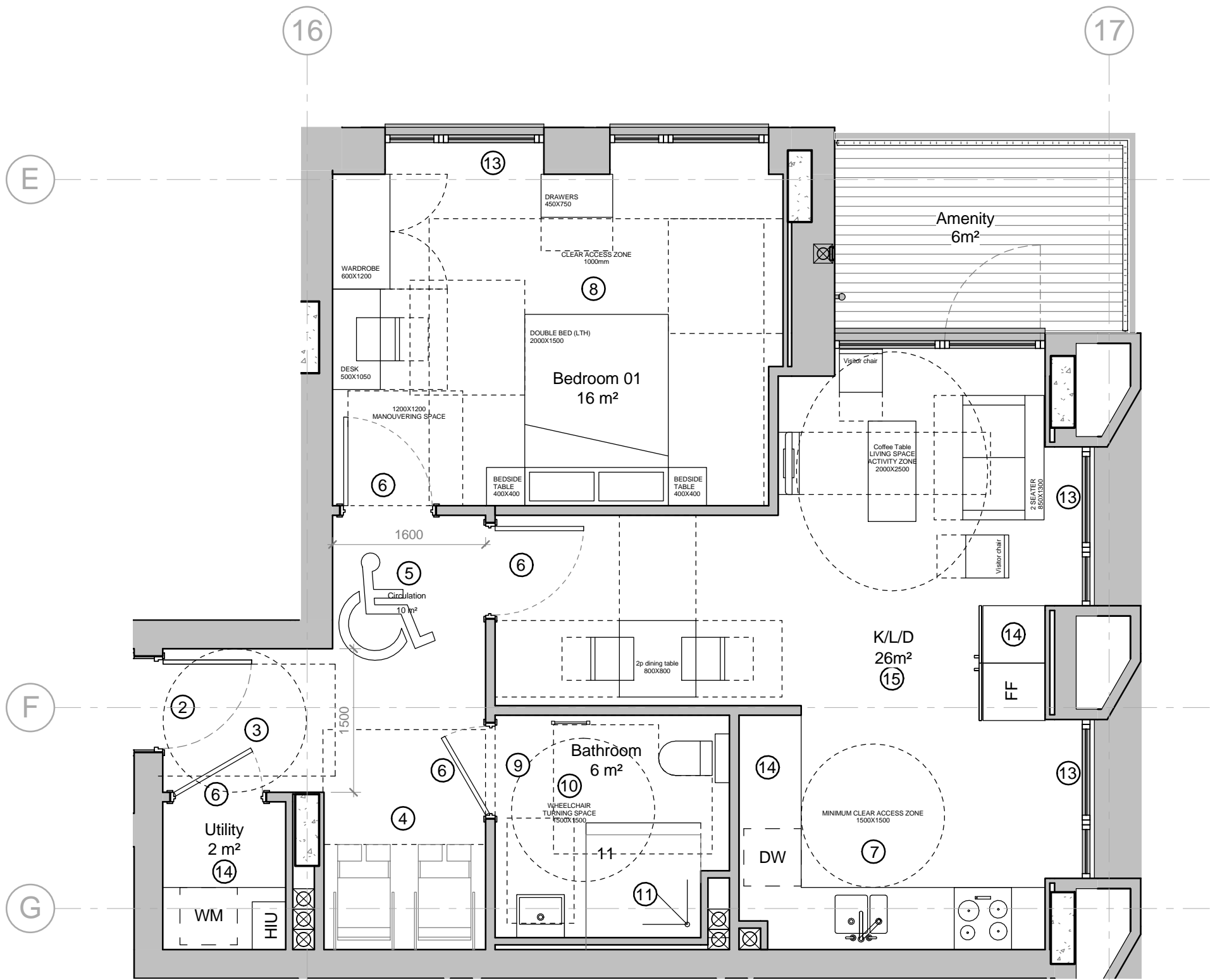
SSL – Structural Slab Level
SFL – Screed Floor Level – Top of the Screed
FFL – Finish Floor Level (including finish eg: carpet or tiles)

This drawing must be read in conjunction with all relevant Specifications and Consultant Drawings. Specific drawing information can be found under the following drawing series:

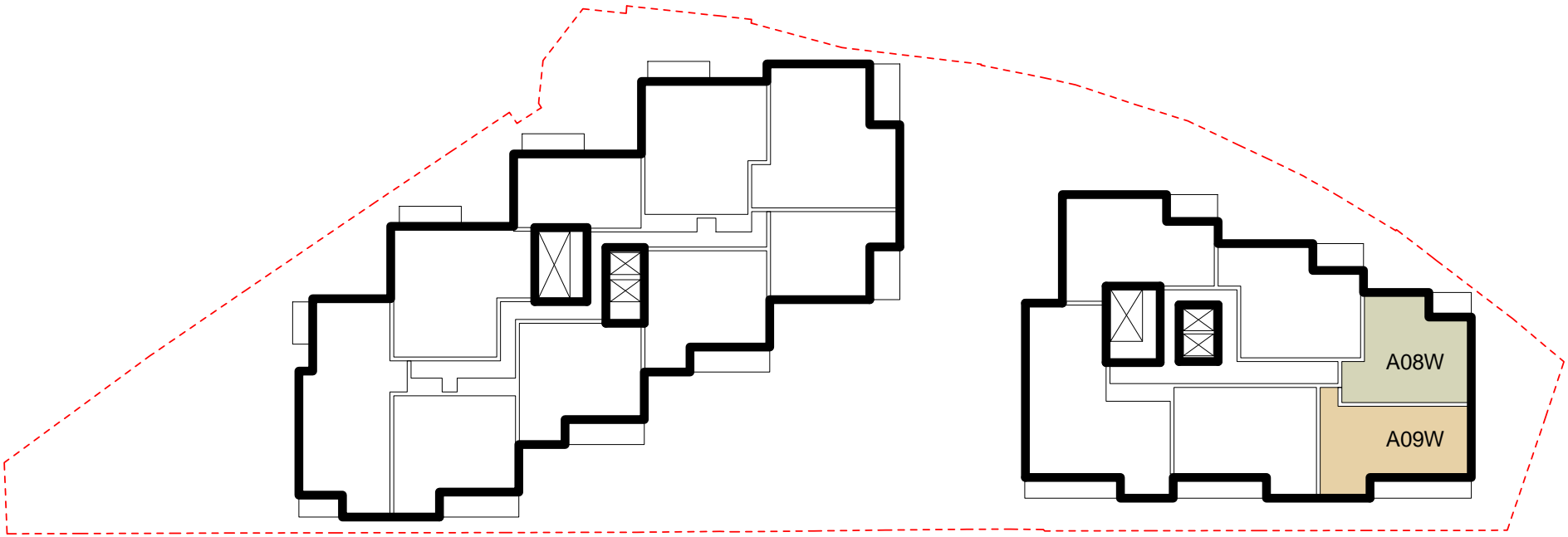
0000	Site	3200	Internal Openings
0010	GA Plans & Reference Plans	3400	Metal Works
0020	GA Elevations	3500	Suspended Ceilings
0030	GA Sections	3600	Balconies
0040	3D Views	4300	Floors
0400	Fire Strategy	5000	Mainly Ducted
1000	Substructure	6600	Mainly Electrical
2000	Structure Coordination	7300	Kitchen
2100	External Walls	7400	Bathrooms
2200	Internal Walls	7500	Cleaning and Maintenance
2400	Stairs and Ramps	7600	Storage and Cupboards
2500	Concrete Finishes	7700	Entrances and Lobbies
2700	Roof	SCH31	Residential Interior Finishes
3000	Curtain Walling	SCH34	Communal Interior Finishes
3100	External Openings		



01 - Apartment Type A09W



02 - Apartment Type A08W



Key Plan

Access to and Use of Buildings Approved Document M (2015 edition incorporating 2016 amendments)	
Design Requirement	Unit Compliance
1 Access to the WC and other accommodation within the entrance storey is step-free and the dwelling is designed to have the potential for step-free access to all other parts. (Part M4(3) p23)	✓
2 The entrance door (or gate) has a minimum clear opening width of 850mm. (Part M4(3) p27) The landing is covered to a minimum width and depth of 1200mm. Lighting is provided which uses fully diffused luminaires.(Part M4(3) p27) A minimum 300mm nib is provided to the leading edge of the door and the extra width created by this nib is maintained for a minimum of 1800mm beyond it. A minimum 200mm nib is provided to the following edge of the door. (Part M4(3) p27)	✓
3 There is a minimum 1500mm clear turning circle inside the entrance area, in front of the door when closed. (Part M4(3) p30)	✓
4 A storage and transfer space which complies with the following: A minimum 1100mm deep by 1700mm wide space is available on the entrance storey, preferably close to the principal private entrance; is accessible from a space that has a minimum clear width of 1200mm. (Part M4(3) p33-34)	✓
5 The minimum clear width of every hallway, approach or landing is 1050mm. Where the approach to a doorway is not head on, the minimum clear width is 1200mm Any localised obstruction, such as a radiator, does not occur opposite or close to a doorway or at a change of direction. (Part M4(3) p32)	✓
6 Every door has a minimum clear opening width of 850mm, irrespective of the direction of entry. A minimum 300mm nib is provided to the leading edge and a minimum 200mm nib is provided to the following edge or every door. (Part M4(3) p32)	✓
7 There is a minimum clear access zone 1500mm wide in front of, and between, all kitchen units and appliances. (Part M4(3) p36)	✓
8 Every bedroom can provide a minimum 1200 by 1200 manoeuvring space inside the doorway, clear of the bed and the door (when the door is in the closed position). The principal double bedroom can provide a minimum 1000mm wide clear access zone to both sides and the foot of the bed. Every other double bedroom can provide a minimum clear access zone to one side and the front of all furniture. All single and twin bedrooms provide a minimum clear access route to one side of the bed and all furniture. (Part M4(3) p39)	✓
9 Where sanitary facilities are wheelchair accessible, basins and sinks should be wall hung and the clear zone beneath basins, services and pedestals is maximised to enable wheelchair users to approach. (Part M4(3) p40) Doors must be capable of opening outwards. (Part M4(3) p40)	✓
10 The bathroom provides a minimum 1500mm clear turning circle (Part M4(3) p46)	✓
11 Typical Minimum Sanitary Provision - 2 or 3 bedspaces - Bathroom with level access shower (Part M4(3) p41). Installed level access shower - Step-free area with no lips or upstands, suitable for showering, with a floor laid to shallow falls towards a floor gully connected to the drainage system (Part M4(3) p52).	✓
12 The ceiling structure to every bedroom, bathrooms and WC/cloakrooms is strong enough to allow for the fitting of an overhead hoist capable of carrying a load of 200kg. (Part M4(3) p38 and p40)	✓
13 The handle to at least one window is 700-1000mm above floor level, unless the window is fitted with a remote opening device that is within this height range. Handles to all other windows are 450-1200mm above floor level (Part M4(3) p50).	✓
14 Minimum length of kitchen worktop, including fittings and appliances, to be fitted at completion for a wheelchair accessible dwelling: 2 bedspaces:6130mm, 6-8 bedspaces:8530mm (Part M4(3) p38).	✓
15 Minimum combined floor area for living, dining, and kitchen space: 2 bedspaces:25m², 6 bedspaces:33m² (Part M4(3) p36).	✓
16 Minimum area of built-in storage: 1 bedroom:1.5m², 4 bedrooms:3.0m² (Part M4(3) p34).	✓

-	21.03.19	Issued to the London Borough of Camden.	DH
REV	DATE	NOTES	INT

PLANNING

HUTCHINSON & PARTNERS

3.14 The Record Hall, 16-16A Baldwin's Garden, London, EC1N 7RJ
t. 020 3176 8196 e. info@hutchinsonandpartners.com
www.hutchinsonandpartners.com

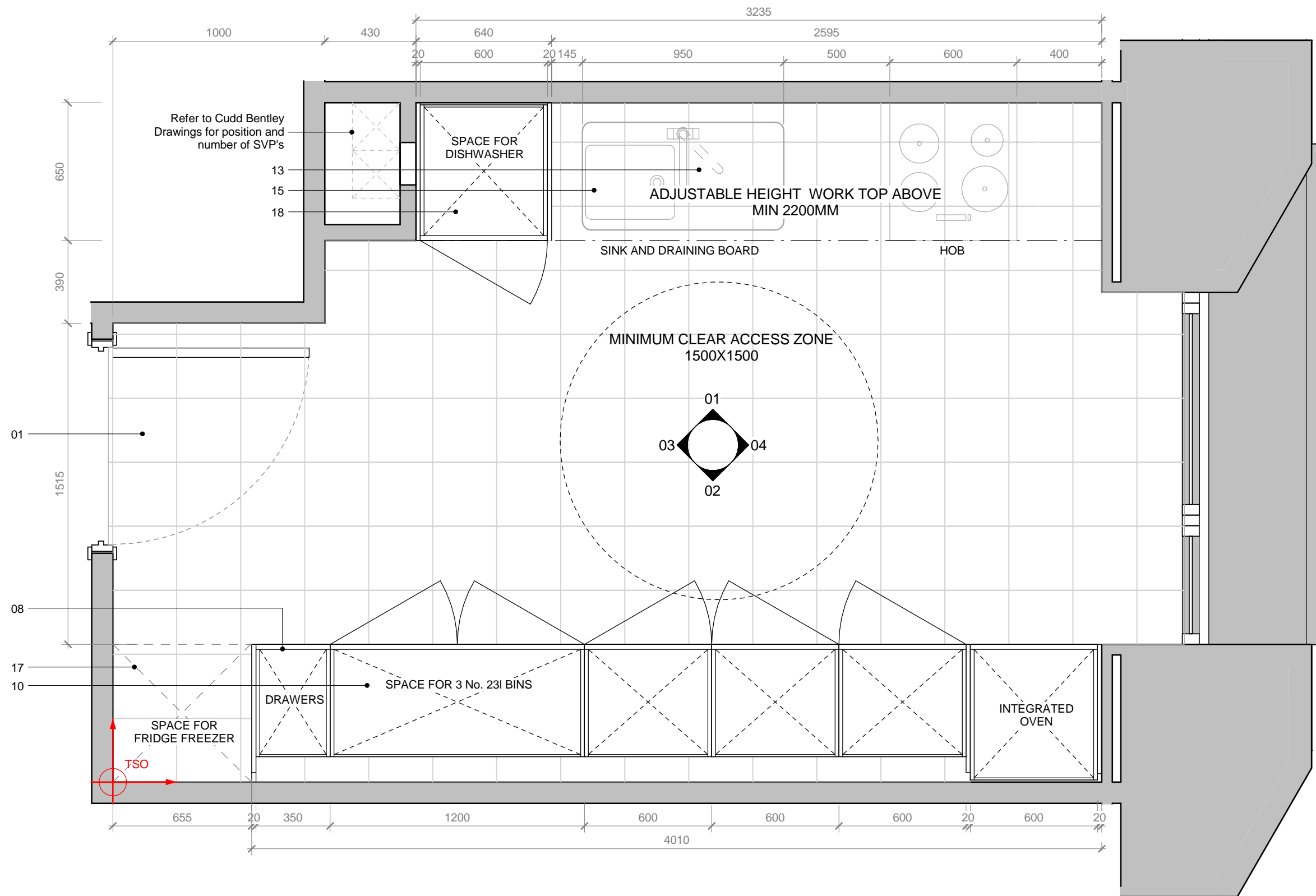
JOB TITLE
Stanley Sidings, 101 Camley Street, Camden

DRAWING TITLE / LOCATION
UNIT PLAN LAYOUT - A08W & A09W

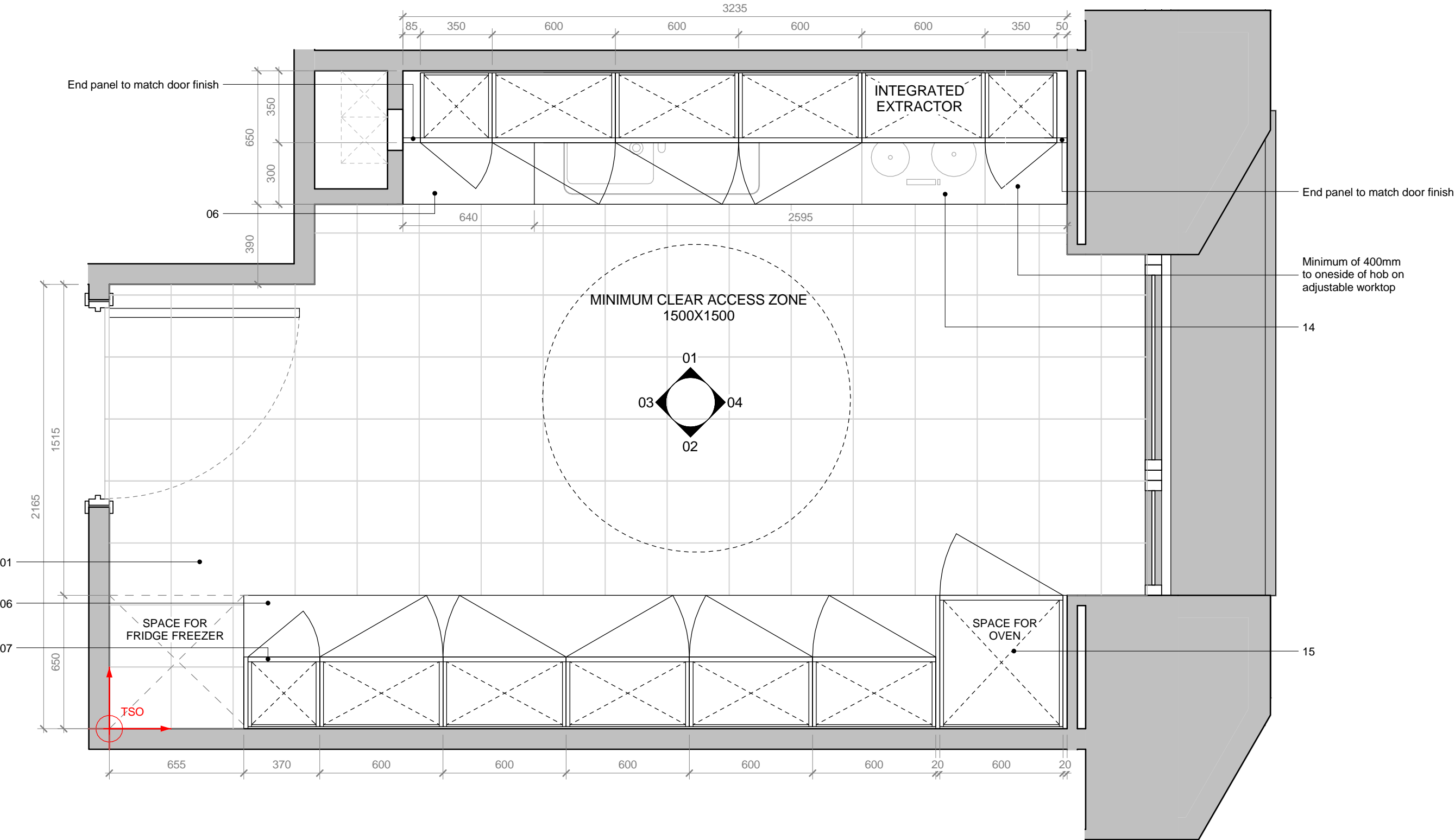
DRAWN BY DH	CHECKED GFV	SCALE 1:20 @ A1 / 1:40 @ A3	STATUS PLANNING
PROJECT 16022	DRAWING NO 01 AP 0400 019	REVISION -	

CLIENT





Floor Plan/Base Unit



Floor Plan/Wall Unit

Unit Type Ref: A03W
Tenure Social Rented

Affordable Interior Specification - Accessible Kitchens		
	Item	Description
1	Floor Finish	Tile: Manufacturer Polyflor XL; Polysafe Polyflex Plus; Pennine Fawn 7030, 300x300mm
2	Wall Finish/Paint	Plaster/dry lining: 15mm plywood backing to all walls with fixtures. Dulux or better approved, Egg Shell Finish (one mist coat and two full coats), White
3	Ceiling Finish	Plaster/dry line: Dulux, Egg Shell Finish (one mist coat and two full coats), White
4	Skirting	Skirting to be square edged with mitred corners. Dims: 18x100mm spray Paint Finish MDF, White
5	Splash Back	Tile: Manufacturer, H&R Johnson; 4mm Plain Colour Range, White, 150x150mm. Full tiling to be provided between the worktop surface and underside of wall units. Tiling to extend down to skirting behind cooker.
6	Worktop	40mm post formed rolled edge worktop, mason tired joints at 90 deg. angles. Ends adjacent to cooker and F/F positions to be fitted with SAA edging strips. Manufacturer, Paula Rosa Manhattan;
7	Kitchen Wall Units	Manufacturer, Paula Rosa Manhattan; Range TBC, Matt White finish on doors, white carcass.
8	Kitchen Base Units	Manufacturer, Paula Rosa Manhattan; Range TBC, Matt White finish on doors, white carcass.
9	Drawer Pack	Manufacturer, Paula Rosa Manhattan; Range TBC, Matt White finish on front panels, white carcass.
10	Recycling Bins	3 No. Caddies: Manufacturer, Straight; Kerbside Caddy, 3 different colours, volume 23L. 320x400x405mm.
11	Sink and Drainer	Manufacturer, Leisure: 18/10 Stainless Steel, satin finish shallow bowl, bright finish drainer, 1 No. tap hole, 950x508mm, Lexin LE95SB. To be mounted on adjustable height worktop with hob.
12	Door Handles	Manufacturer, Paula Rosa Manhattan; 510 Brushed Nickel.
13	Tap	Chrome mixer tap: Manufacturer, Bristan; DUL SNK EF C TO
14	Hob	SPACE ONLY - Mounted on adjustable height worktop with low profile sink.
15	Oven	Integrated oven. Centre line 850mm above FFL. Drawer underneath.
16	Extractor	Integrated cooker hood (recirculating only), stainless steel.
17	Fridge/Freezer	SPACE ONLY
18	Dishwasher	To be enclosed in cabinetry to match base units.
19	Washer/Dryer	SPACE ONLY
20	SVP Access Panel	Lift Off Tile Door. Manufacturer: The Access Panel Company Ltd. Finish to match Splash Back Tile.



TO BE PRINTED IN COLOUR

All dimensions are in mm unless otherwise stated
All dimensions to be verified on site before proceeding with the work
Any discrepancies to be notified in writing to Architect immediately
All boundaries indicative only and to be confirmed by others

NOTE

Contractor drawings and samples to be submitted for approval prior to fabrication. Any discrepancies must be reported to the Architect.

All dimensions are in mm unless stated otherwise
All dimensions to be site checked prior to fabrication/construction

. For Frame Dimensions refer to window schedules 01 SC 3100 Series.
. For Door and Windows incorporated in one of the Sets, please refer to 01 SC 3100 300 Series for S/O and Frame dimensions.

SSL – Structural Slab Level
SFL – Screed Floor Level – Top of the Screed
FFL – Finish Floor Level (including finish eg: carpet or tiles)

This drawing must be read in conjunction with all relevant Specifications and Consultant Drawings. Specific drawing information can be found under the following drawing series:

0000	Site	3200	Internal Openings
0010	GA Plans & Reference Plans	3400	Metal Works
0020	GA Elevations	3500	Suspended Ceilings
0030	GA Sections	3600	Balconies
0040	3D Views	4300	Floors
0400	Fire Strategy	5000	Mainly Ducted
1000	Substructure	6600	Mainly Electrical
2000	Structure Coordination	7300	Kitchen
2100	External Walls	7400	Bathrooms
2200	Internal Walls	7500	Cleaning and Maintenance
2400	Stairs and Ramps	7600	Storage and Cupboards
2500	Concrete Finishes	7700	Entrances and Lobbies
2700	Roof	SCH31	Residential Interior Finishes
3000	Curtain Walling	SCH34	Communal Interior Finishes
3100	External Openings		

Read in conjunction with AMOS AMOS drawings. For finishes, please refer to Finishes Schedule. For Electrical layout, please refer to MEPH Drawings.

01	11.03.19	Kitchen range spec. changes as per Ardmore request.	AO
REV	DATE	NOTES	DH

STAGE 05 - CONSTRUCTION

HUTCHINSON & PARTNERS

3.14 The Record Hall, 16-16A Baldwin's Garden, London, EC1N 7RJ
t. 020 3176 8196 e. info@hutchinsonandpartners.com
www.hutchinsonandpartners.com

JOB TITLE
Stanley Sidings, 101 Camley Street, Camden

DRAWING TITLE / LOCATION
Kitchen Type 203 - Plan

DRAWN BY DH	CHECKED GFV	SCALE 1:20 @ A1 / 1:40 @ A3	STATUS STAGE 05
PROJECT 16022	DRAWING NO 01 AL 7300 103	REVISION 01	

CLIENT



All dimensions are in mm unless otherwise stated
All dimensions to be verified on site before proceeding with the work
Any discrepancies to be notified in writing to Architect immediately
All boundaries indicative only and to be confirmed by others

NOTE

Contractor drawings and samples to be submitted for approval prior to fabrication. Any discrepancies must be reported to the Architect.

All dimensions are in mm unless stated otherwise
All dimensions to be site checked prior to fabrication/construction

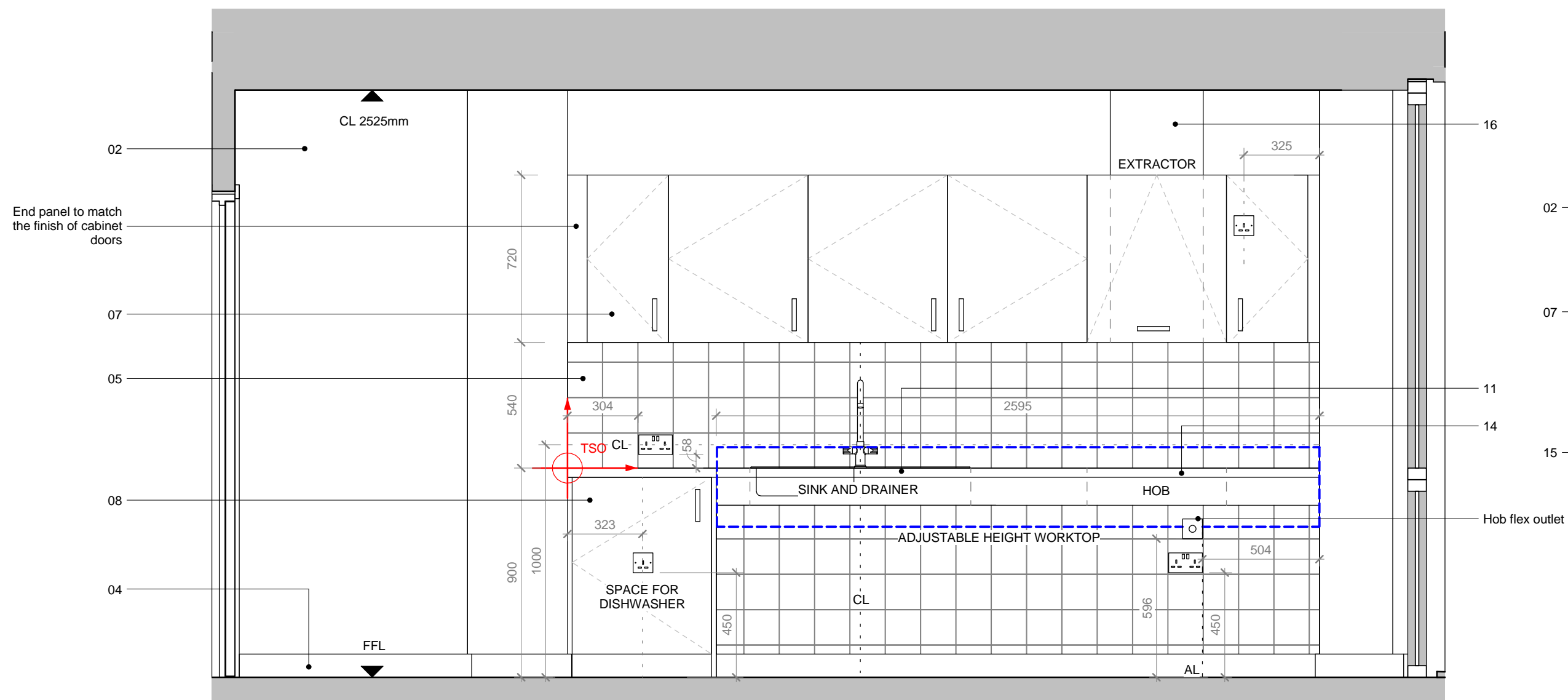
. For Frame Dimensions refer to window schedules 01 SC 3100 Series.
. For Door and Windows incorporated in one of the Sets, please refer to 01 SC 3100 300 Series for S/O and Frame dimensions.

SSL – Structural Slab Level
SFL – Screed Floor Level – Top of the Screed
FFL – Finish Floor Level (including finish eg: carpet or tiles)

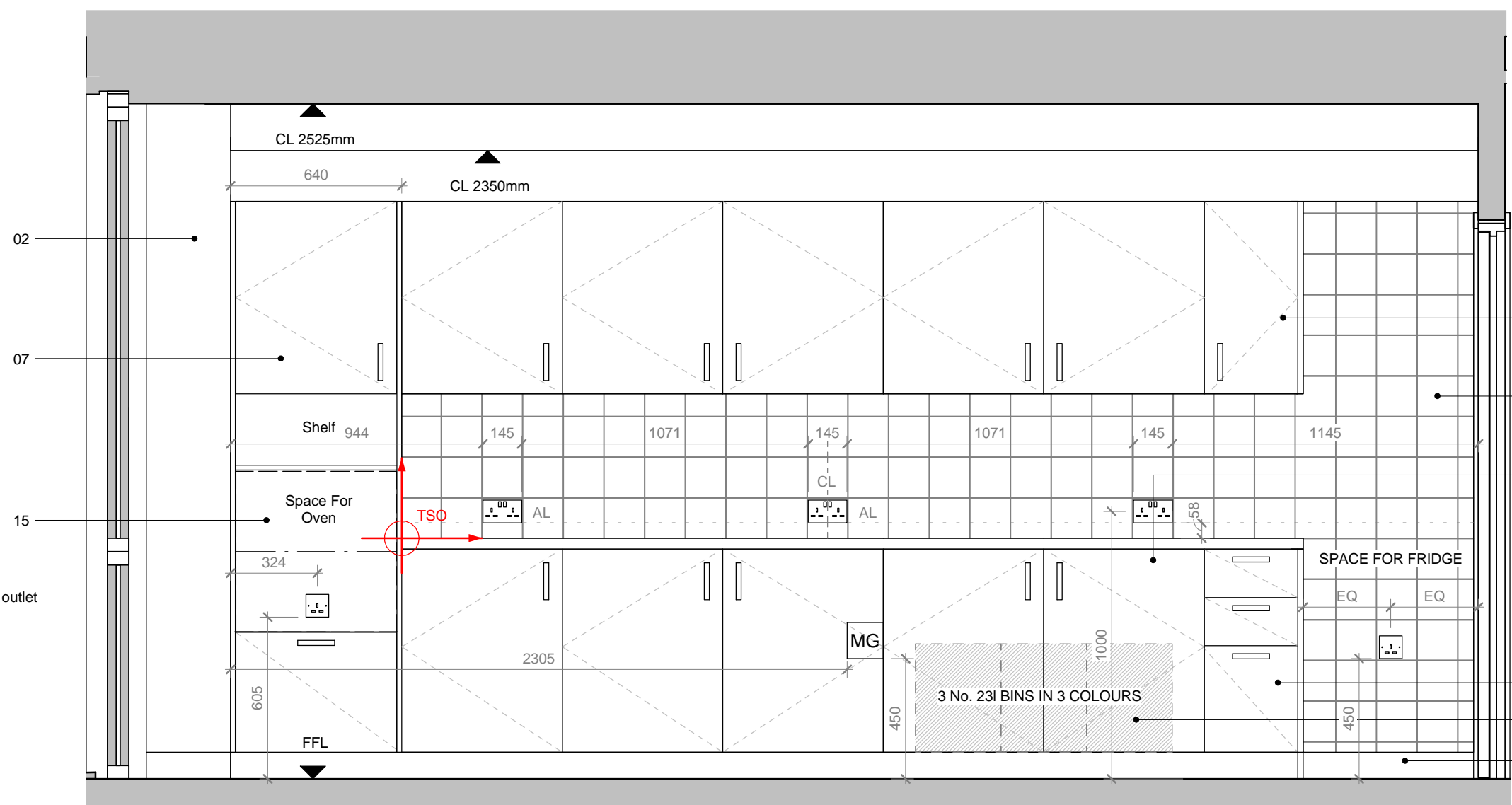
This drawing must be read in conjunction with all relevant Specifications and Consultant Drawings. Specific drawing information can be found under the following drawing series:

0000	Site	3200	Internal Openings
0010	GA Plans & Reference Plans	3400	Metal Works
0020	GA Elevations	3500	Suspended Ceilings
0030	GA Sections	3600	Balconies
0040	3D Views	4300	Floors
0400	Fire Strategy	5000	Mainly Ducted
1000	Substructure	6600	Mainly Electrical
2000	Structure Coordination	7300	Kitchen
2100	External Walls	7400	Bathrooms
2200	Internal Walls	7500	Cleaning and Maintenance
2400	Stairs and Ramps	7600	Storage and Cupboards
2500	Concrete Finishes	7700	Entrances and Lobbies
2700	Roof	SCH31	Residential Interior Finishes
3000	Curtain Walling	SCH34	Communal Interior Finishes
3100	External Openings		

Read in conjunction with AMOS AMOS drawings. For finishes, please refer to Finishes Schedule. For Electrical layout, please refer to MEPH Drawings.



01 - Elevation



02 - Elevation

Unit Type Ref: A03W
Tenure Social Rent

Affordable Interior Specification - Accessible Kitchens		
	Item	Description
1	Floor Finish	Tile: Manufacturer Polyflor XL; Polysafe Polyflex Plus; Pennine Fawn 7030, 300x300mm
2	Wall Finish/Paint	Plaster/dry lining: 15mm plywood backing to all walls with fixtures. Dulux or better approved, Egg Shell Finish (one mist coat and two full coats), White
3	Ceiling Finish	Plaster/dry line: Dulux, Egg Shell Finish (one mist coat and two full coats), White
4	Skirting	Skirting to be square edged with mitred corners. Dims: 18x100mm spray Paint Finish MDF, White
5	Splash Back	Tile: Manufacturer, H&R Johnson; 4mm Plain Colour Range, White, 150x150mm. Full tiling to be provided between the worktop surface and underside of wall units. Tiling to extend down to skirting behind cooker.
6	Worktop	40mm post formed rolled edge worktop, mason tired joints at 90 deg. angles. Ends adjacent to cooker and F/F positions to be fitted with SAA edging strips. Manufacturer, Paula Rosa Manhattan;
7	Kitchen Wall Units	Manufacturer, Paula Rosa Manhattan; Range TBC, Matt White finish on doors, white carcass.
8	Kitchen Base Units	Manufacturer, Paula Rosa Manhattan; Range TBC, Matt White finish on doors, white carcass.
9	Drawer Pack	Manufacturer, Paula Rosa Manhattan; Range TBC, Matt White finish on front panels, white carcass.
10	Recycling Bins	3 No. Caddies: Manufacturer, Straight; Kerbside Caddy, 3 different colours, volume 23L. 320x400x405mm.
11	Sink and Drainer	Manufacturer, Leisure: 18/10 Stainless Steel, satin finish shallow bowl, bright finish drainer, 1 No. tap hole, 950x508mm, Lexin LE95SB. To be mounted on adjustable height worktop with hob.
12	Door Handles	Manufacturer, Paula Rosa Manhattan; 510 Brushed Nickel.
13	Tap	Chrome mixer tap: Manufacturer, Bristan; DUL SNK EF C TO
14	Hob	SPACE ONLY - Mounted on adjustable height worktop with low profile sink.
15	Oven	Integrated oven. Centre line 850mm above FFL. Drawer underneath.
16	Extractor	Integrated cooker hood (recirculating only), stainless steel.
17	Fridge/Freezer	SPACE ONLY
18	Dishwasher	To be enclosed in cabinetry to match base units.
19	Washer/Dryer	SPACE ONLY
20	SVP Access Panel	Lift Off Tile Door. Manufacturer: The Access Panel Company Ltd. Finish to match Splash Back Tile.

01	11.03.19	Kitchen range spec. changes as per Ardmore request.	AO
REV	DATE	NOTES	DH
		05.02.19 Issued as per Ardmore Request	INT

STAGE 05 - CONSTRUCTION

HUTCHINSON & PARTNERS

3.14 The Record Hall, 16-16A Baldwin's Garden, London, EC1N 7RJ
t: 020 3176 8196 e: info@hutchinsonandpartners.com
www.hutchinsonandpartners.com

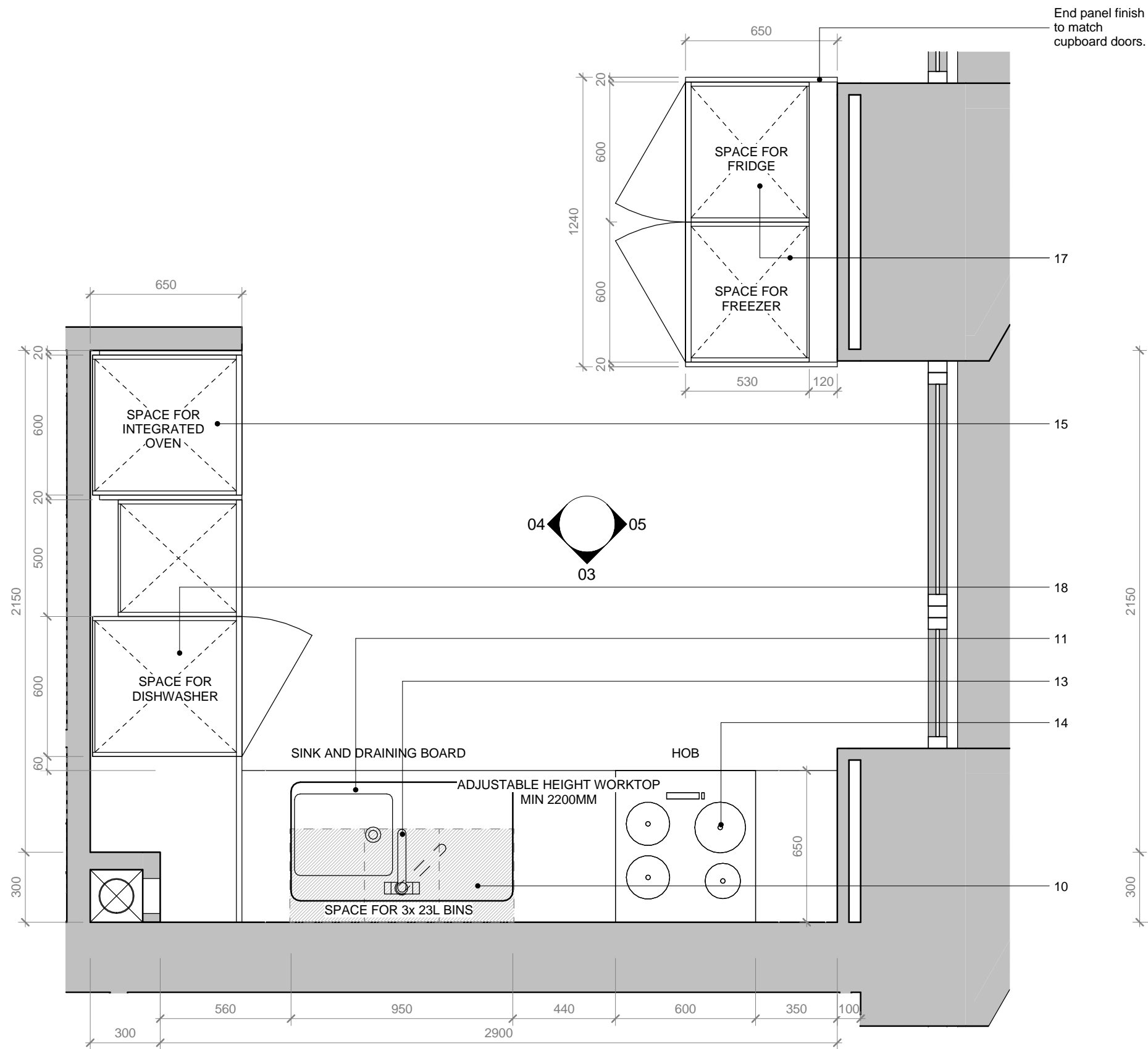
JOB TITLE
Stanley Sidings, 101 Camley Street, Camden

DRAWING TITLE / LOCATION
Kitchen Type 203 - Elevations

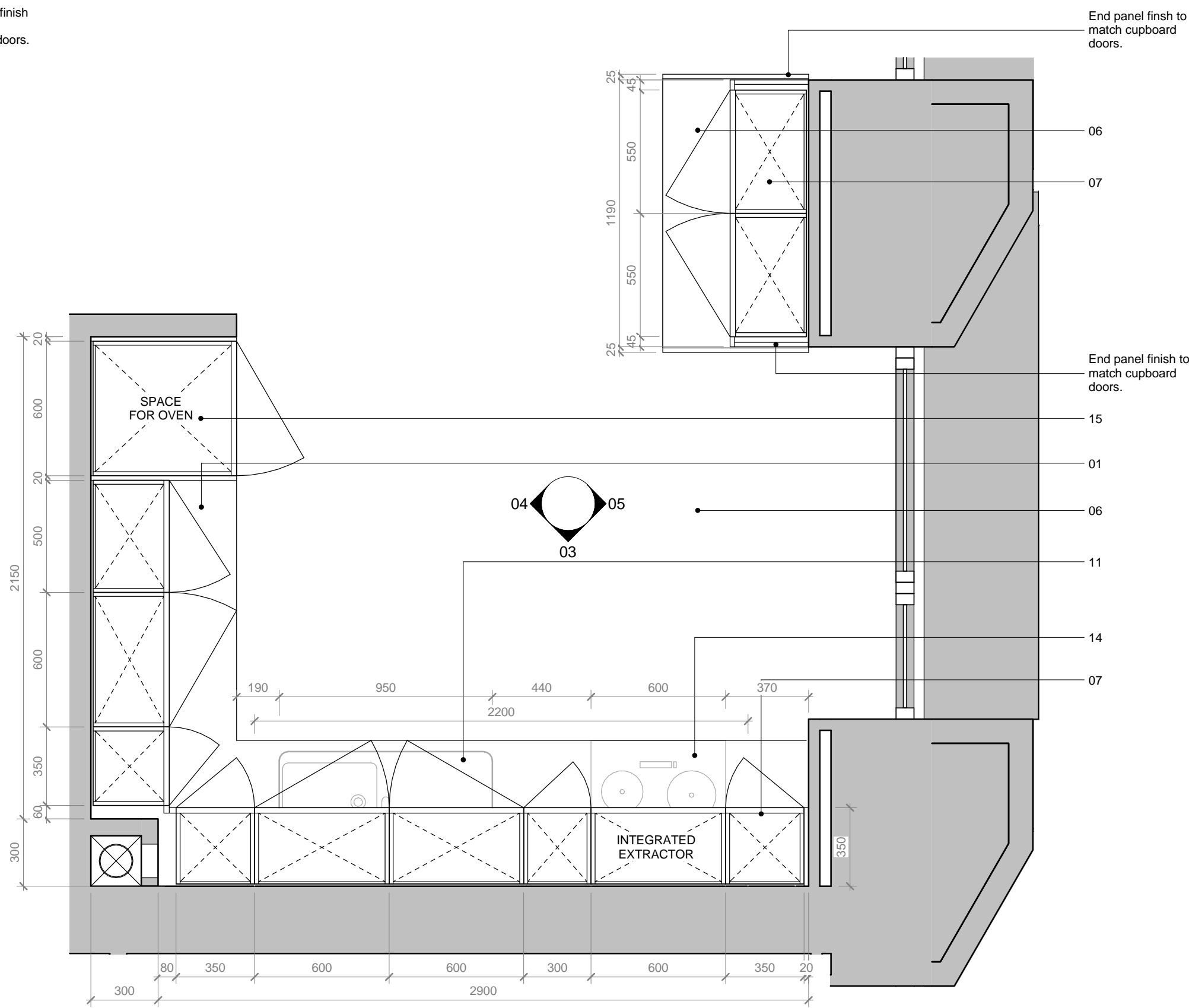
DRAWN BY DH	CHECKED GFV	SCALE 1:20 @ A1 / 1:40 @ A3	STATUS STAGE 05
PROJECT 16022	DRAWING NO 01 AL 7300 104	REVISION 01	

CLIENT





Floor Plan/Base Unit



Floor Plan/Wall Unit

Unit Type Ref: A08W
Tenure Intermediate

Affordable Interior Specification - Accessible Kitchens		
	Item	Description
1	Floor Finish	Tile: Manufacturer Polyflor XL; Polysafe Polyflex Plus; Pennine Fawn 7030, 300x300mm
2	Wall Finish/Paint	Plaster/dry lining: 15mm plywood backing to all walls with fixtures. Dulux or better approved, Egg Shell Finish (one mist coat and two full coats), White
3	Ceiling Finish	Plaster/dry line: Dulux, Egg Shell Finish (one mist coat and two full coats), White
4	Skirting	Skirting to be square edged with mitred corners. Dims: 18x100mm spray Paint Finish MDF, White
5	Splash Back	Tile: Manufacturer, H&R Johnson; 4mm Plain Colour Range, White, 150x150mm, Full tiling to be provided between the worktop surface and underside of wall units. Tiling to extend down to skirting behind cooker.
6	Worktop	40mm post formed rolled edge worktop, mason tired joints at 90 deg. angles. Ends adjacent to cooker and F/F positions to be fitted with SAA edging strips. Manufacturer, Paula Rosa Manhattan;
7	Kitchen Wall Units	Manufacturer, Paula Rosa Manhattan; Range TBC, Matt White finish on doors, white carcass.
8	Kitchen Base Units	Manufacturer, Paula Rosa Manhattan; Range TBC, Matt White finish on doors, white carcass.
9	Drawer Pack	Manufacturer, Paula Rosa Manhattan; Range TBC, Matt White finish on front panels, white carcass.
10	Recycling Bins	3 No. Caddies: Manufacturer, Straight; Kerbside Caddy, 3 different colours, volume 23L. 320x400x405mm.
11	Sink and Drainer	Manufacturer, Leisure: 18/10 Stainless Steel, satin finish shallow bowl, bright finish drainer, 1 No. tap hole, 950x508mm, Lexin LE95SB. To be mounted on adjustable height worktop with hob.
12	Door Handles	Manufacturer, Paula Rosa Manhattan; 510 Brushed Nickel.
13	Tap	Chrome mixer tap: Manufacturer, Bristan; DUL SNK EF C TO
14	Hob	SPACE ONLY - Mounted on adjustable height worktop with low profile sink.
15	Oven	Integrated oven. Centre line 850mm above FFL. Drawer underneath.
16	Extractor	Integrated cooker hood (recirculating only), stainless steel.
17	Fridge/Freezer	SPACE ONLY
18	Dishwasher	To be enclosed in cabinetry to match base units.
19	Washer/Dryer	SPACE ONLY
20	SVP Access Panel	Lift Off Tile Door. Manufacturer: The Access Panel Company Ltd. Finish to match Splash Back Tile.

All dimensions are in mm unless otherwise stated
All dimensions to be verified on site before proceeding with the work
Any discrepancies to be notified in writing to Architect immediately
All boundaries indicative only and to be confirmed by others

NOTE

Contractor drawings and samples to be submitted for approval prior to fabrication. Any discrepancies must be reported to the Architect.

All dimensions are in mm unless stated otherwise
All dimensions to be site checked prior to fabrication/construction

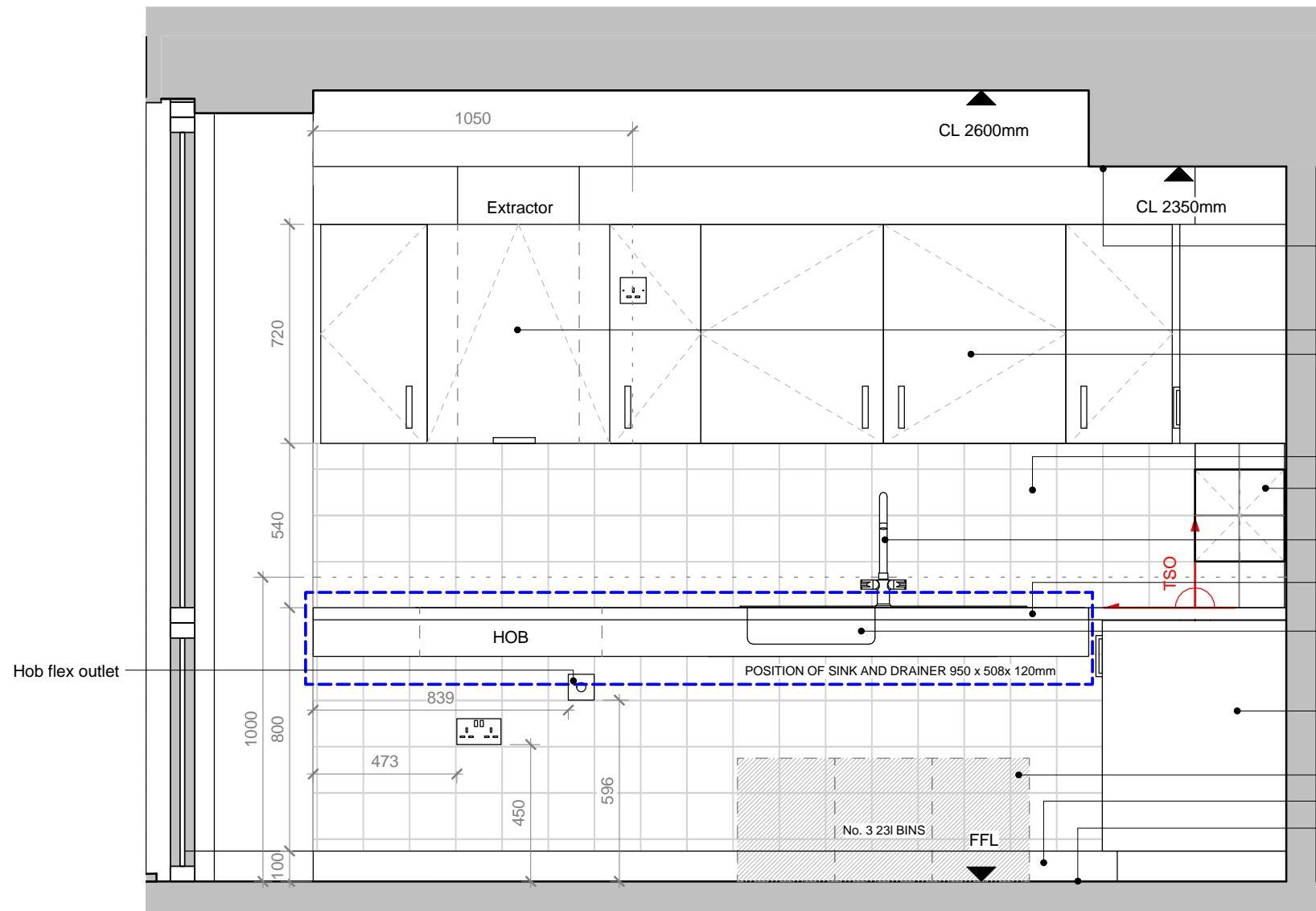
. For Frame Dimensions refer to window schedules 01 SC 3100 Series.
. For Door and Windows incorporated in one of the Sets, please refer to 01 SC 3100 300 Series for S/O and Frame dimensions.

SSL – Structural Slab Level
SFL – Screed Floor Level – Top of the Screed
FFL – Finish Floor Level (including finish eg: carpet or tiles)

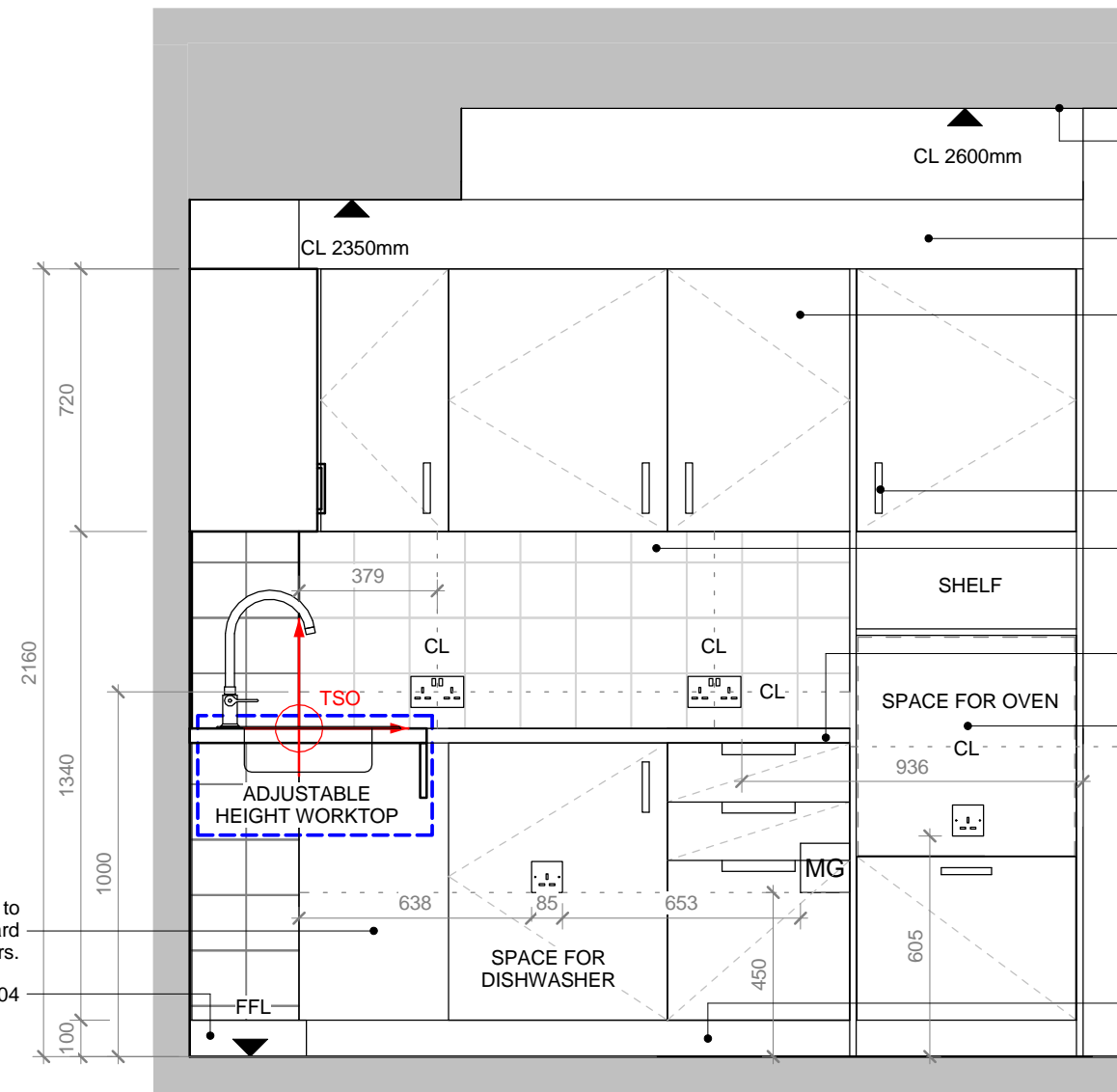
This drawing must be read in conjunction with all relevant Specifications and Consultant Drawings. Specific drawing information can be found under the following drawing series:

0000	Site	3200	Internal Openings
0010	GA Plans & Reference Plans	3400	Metal Works
0020	GA Elevations	3500	Suspended Ceilings
0030	GA Sections	3600	Balconies
0040	3D Views	4300	Floors
0400	Fire Strategy	5000	Mainly Ducted
1000	Substructure	6600	Mainly Electrical
2000	Structure Coordination	7300	Kitchen
2100	External Walls	7400	Bathrooms
2200	Internal Walls	7500	Cleaning and Maintenance
2400	Stairs and Ramps	7600	Storage and Cupboards
2500	Concrete Finishes	7700	Entrances and Lobbies
2700	Roof	SCH31	Residential Interior Finishes
3000	Curtain Walling	SCH34	Communal Interior Finishes
3100	External Openings		

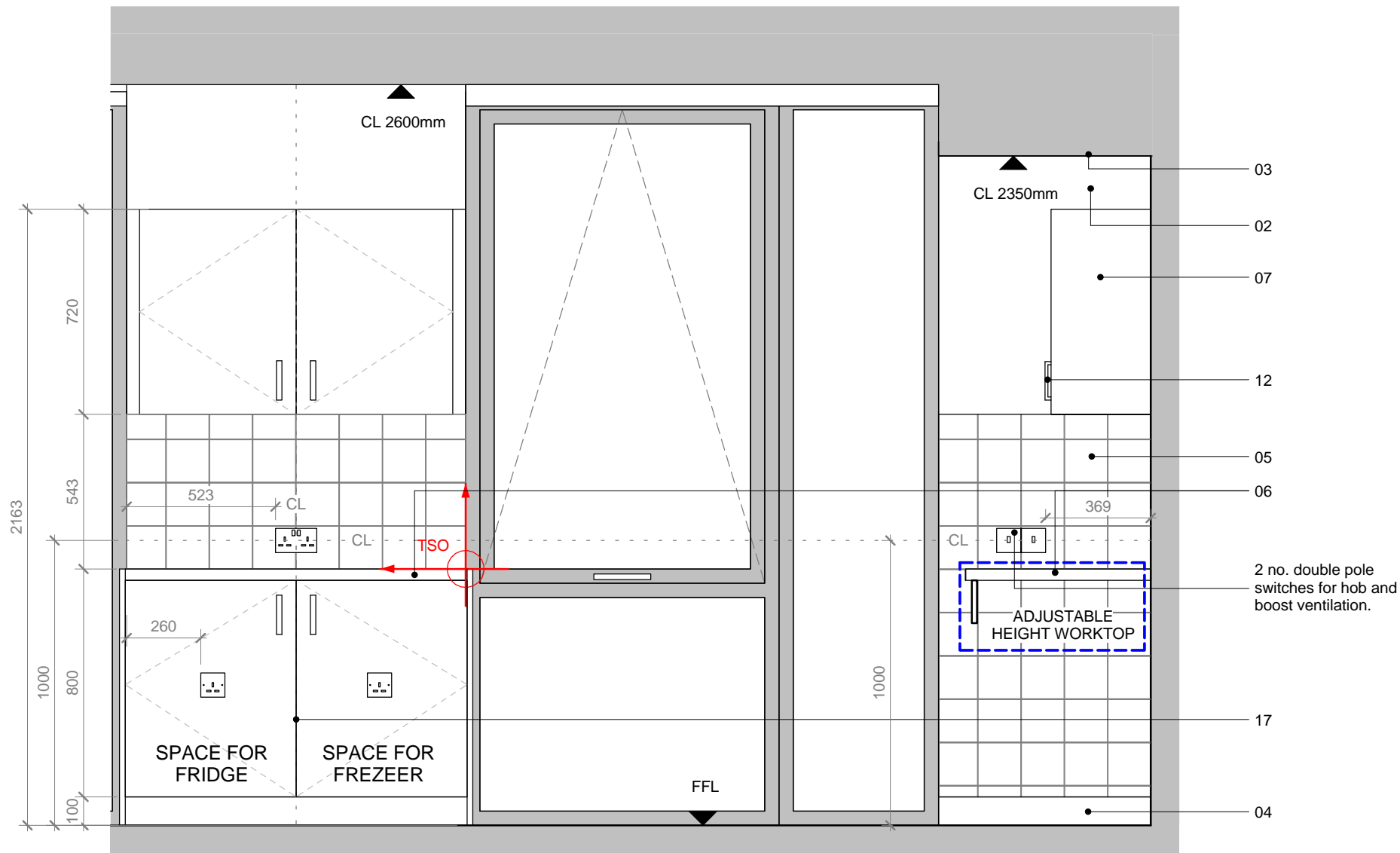
Read in conjunction with AMOS AMOS drawings. For finishes, please refer to Finishes Schedule. For Electrical layout, please refer to MEPH Drawings.



03 - Elevation



04 - Elevation



05 - Elevation

TO BE PRINTED IN COLOUR



01	11.03.19	Kitchen range spec. changes as per Ardmore request.	AO
REV	DATE	NOTES	DH
			INT

STAGE 05 - CONSTRUCTION

HUTCHINSON & PARTNERS

3.14 The Record Hall, 16-16A Baldwin's Garden, London, EC1N 7RJ
t. 020 3176 8196 e. info@hutchinsonandpartners.com
www.hutchinsonandpartners.com

JOB TITLE
Stanley Sidings, 101 Camley Street, Camden

DRAWING TITLE / LOCATION
Kitchen Type 207 - Plan & Elevations

DRAWN BY DH	CHECKED GFV	SCALE 1:20 @ A1 / 1:40 @ A3	STATUS STAGE 05
PROJECT 16022	DRAWING NO 01 AL 7300 108	REVISION 01	

CLIENT





	Item	Description
1	Floor Finish	Wood Flooring: Manufacturer, Havwoods; HW3632 Blanco Character 260mm Engineered Oak Wood Flooring, width 260mm, length random, thickness 20mm. Sanded and UV Oiled.
2	Wall Finish/Paint	Plaster/dry lining: Manufacturer, Dulux; Diamond Matt Emulsion (one mist coat and two full coats), Quiet Dissent.
3	Ceiling Finish	Plaster/dry line: Dulux, Manufacturer, Dulux; Diamond Matt Emulsion (one mist coat and two full coats), Brilliant White.
4.01	Skirting	Skirting to be square edged with mitred corners. Dims: 18x100mm Spray Paint Finish MDF, White
4.02	Skirting	Skirting to Kitchen Cabinets: 120mm base plinth clad in bronze mirror to match splash back detail above worktop. Pearsons glass: 6mm bronze mirror.
5	Splash Back	To match basalt worktop: Manufacturer, Neolith; 12mm Basalt Black Matte, coat to size, from worktop to underside of wall hung cabinets. Extend to skirting on walls adjacent to adjustable worktop. Joints kept to a minimum.
6	Worktop	Basalt Stone: Manufacturer, Neolith; Worktop to be 30mm thick formed from 12mm Basalt Black Matte, coat to size. Joints in basalt to be avoided. Drainer grooves to right hand side of sink.
7	Kitchen Wall Units	TBC
8	Kitchen Base Units	TBC
9	Drawer Pack	TBC
10	Bins	30l Pull Out Bins: Manufacturer, The Bin Company; 2 No. 15l, Cube Pull-Out Waste Bins: 50276508
11	Sink	Undermounted to basalt worktop: Manufacturer TBC. Stainless steel finish. Must be low profile, no deeper than 150mm with insulation to underside to prevent scalding.
12	Door Handles	TBC
13	Tap	Mixer tap: Manufacturer, Grohe; Axor Uno Kitchen mixer single lever, Chrome Finish, 14850000
14	Hob	Induction Hob: Manufacturer, Siemens; iQ100 Induction hob, Bevel Hob. Product ID: EU631FEB1E
15	Oven	Integrated Oven: Manufacturer, Siemens; iQ700 Half Integrated Oven with added steam. Stainless steel, black glass door. HB632GBS1B. Must have pull-out shelf underneath oven.
16	Microwave	Integrated Microwave: Manufacturer, Siemens; iQ500 Half Integrated microwave. Stainless steel, black glass door. BF525LMS0B
17	Extractor	Integrated cooker hood: Manufacturer, Siemens; Half Integrated Extractor Hood iQ500. Concealed in kitchen cabinet. LB5565GB
18	Fridge/Freezer	Integrated Fridge Freezer: Manufacturer, Siemens; Built in Fridge Freezer iQ700; KJ34NP60GB.
19	Dishwasher	Integrated Dishwasher: Manufacturer, Siemens; Integrated Dishwasher iQ300. Door to match kitchen cabinets. SN66D000GB
20	Washer/Dryer	Manufacturer, Siemens; iQ300 Washing Machine. White. WK14D321GB
21	SVP Access Panel	Lift Off Tile Door. Manufacturer: The Access Panel Company Ltd. Finish to match Splash Back Tile.
22	Warming Draw	TBC. There is no room to fit warming draw underneath low level oven.
23	Metal Angle	20mm metal angle, finish to match brassware.



NOTE

Contractor drawings and samples to be submitted for approval prior to fabrication. Any discrepancies must be reported to the Architect.

All dimensions are in mm unless stated otherwise
All dimensions to be site checked prior to fabrication/construction

. For Door and WIndows incorporated in one of the Sets, please refer to 01 SC 3100 300 Series for S/O and Frame dimensions.

SSL – Structural Slab Level
SFL – Screed Floor Level – Top of the Screed
FFL – Finish Floor Level (including finish eg: carpet or tiles)

This drawing must be read in conjunction with all relevant Specifications and Consultant Drawings. Specific drawing information can be found under the following drawing series:

0000	Site	3200	Internal Openings
0001	GA Plans & Reference Plans	3300	Metal Works
0020	GA Elevations	3300	Suspended Ceilings
0030	GA Sections	3600	Balconies
0040	3D Views	3600	Floors
0400	Fire Strategy	5000	Mainly Ducted
1000	Substructure	6600	Mainly Electrical
2000	Structure Coordination	7300	Kitchens
2100	External Walling	7400	Bathrooms
2200	Internal Walls	7500	Cleaning and Maintenance
2400	Stairs and Ramps	7600	Storage and Cupboards
2500	Concrete Finishes	7700	Entrances and Lobbies
2700	Chimneys	SCH31	Residential Internal Finishes
3100	Curtain Walling	SCH34	Commercial Internal Finishes
3700	Internal Openings		

Read in conjunction with AMOS AMOS drawings. For finishes, please refer to Finishes Schedule. For Electrical layout, please refer to MEPH Drawings.

-	15.02.19	Issued as per Ardmore request.	DH
REV	DATE	NOTES	INT

STAGE 05 - CONSTRUCTION

HUTCHINSON & PARTNERS

3.12 The Record Hall, 16-16A Baldwin's Garden, London, EC1N 7RJ
t. 020 3176 8192 e. info@hutchinsonandpartners.com w. www.hutchinsonandpartners.com

JOB TITLE
Stanley Sidings, 101 Camley Street, Camden

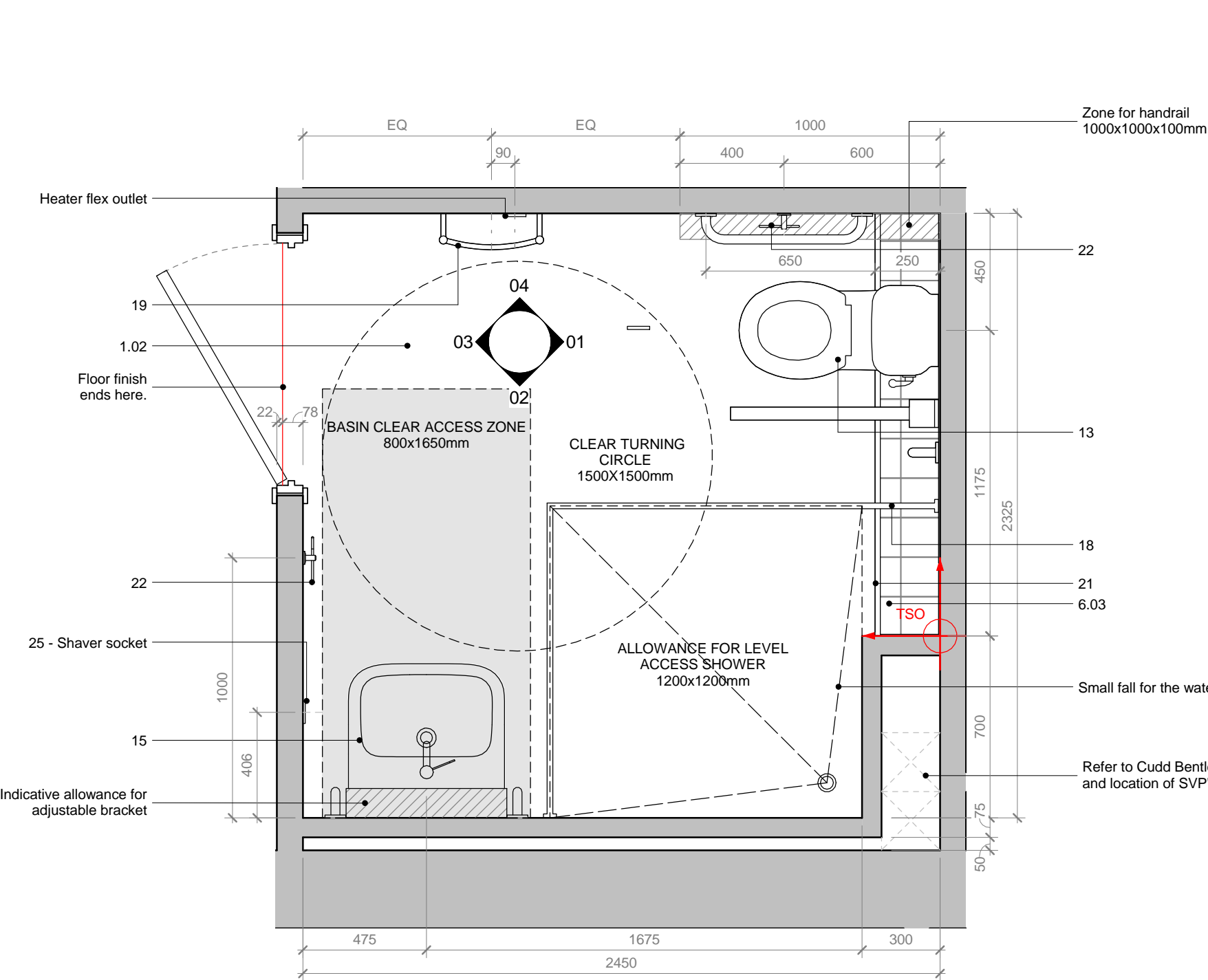
DRAWING TITLE / LOCATION

Kitchen Type 210 - Plan & Elevations

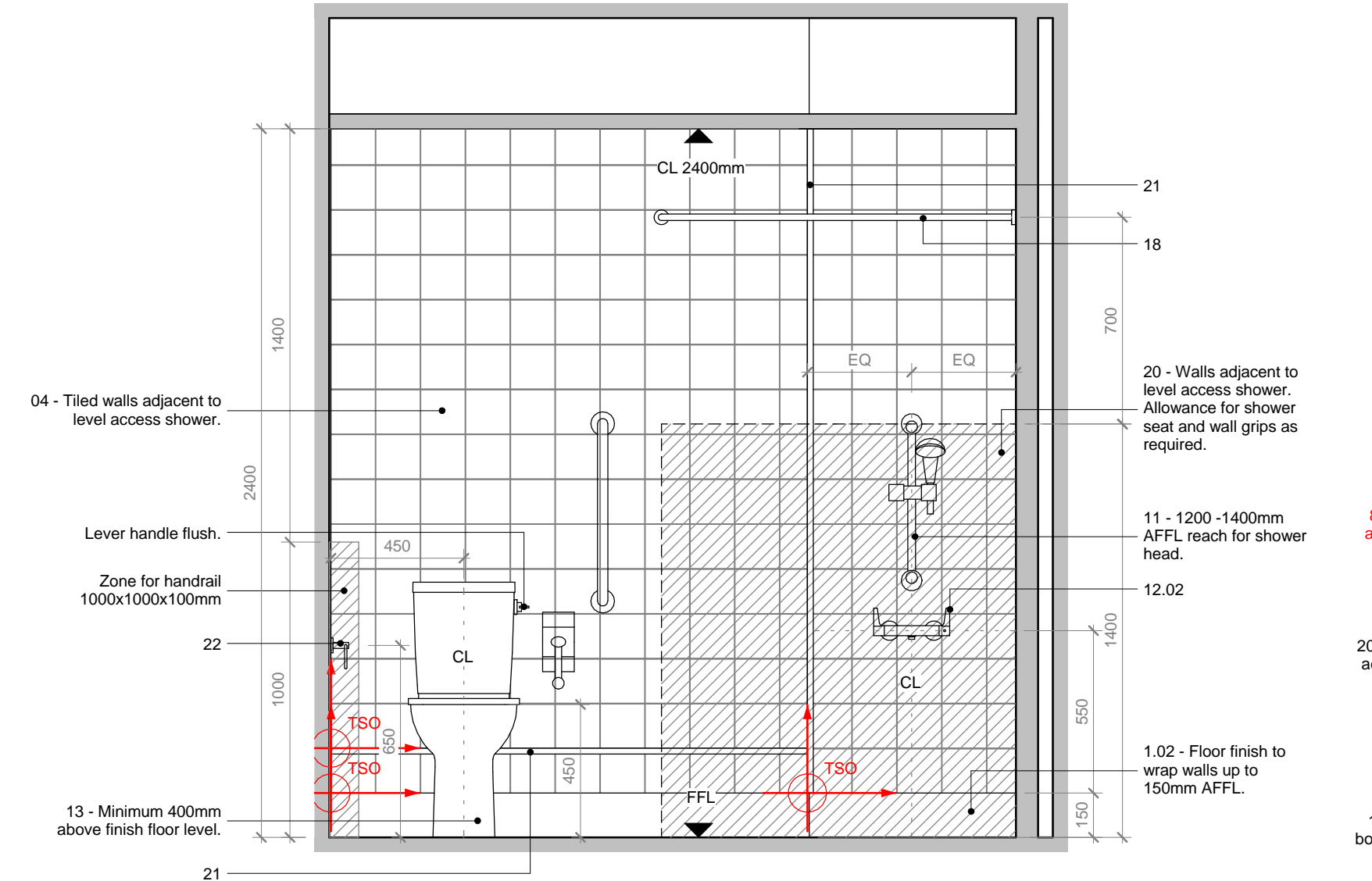
DRAWN BY DH	CHECKED GFV	SCALE 1:20 @ A1 / 1:40 @ A3	STATUS STAGE 05
PROJECT 16022		DRAWING NO 01 AL 7300 111	REVISION -

CLIENT

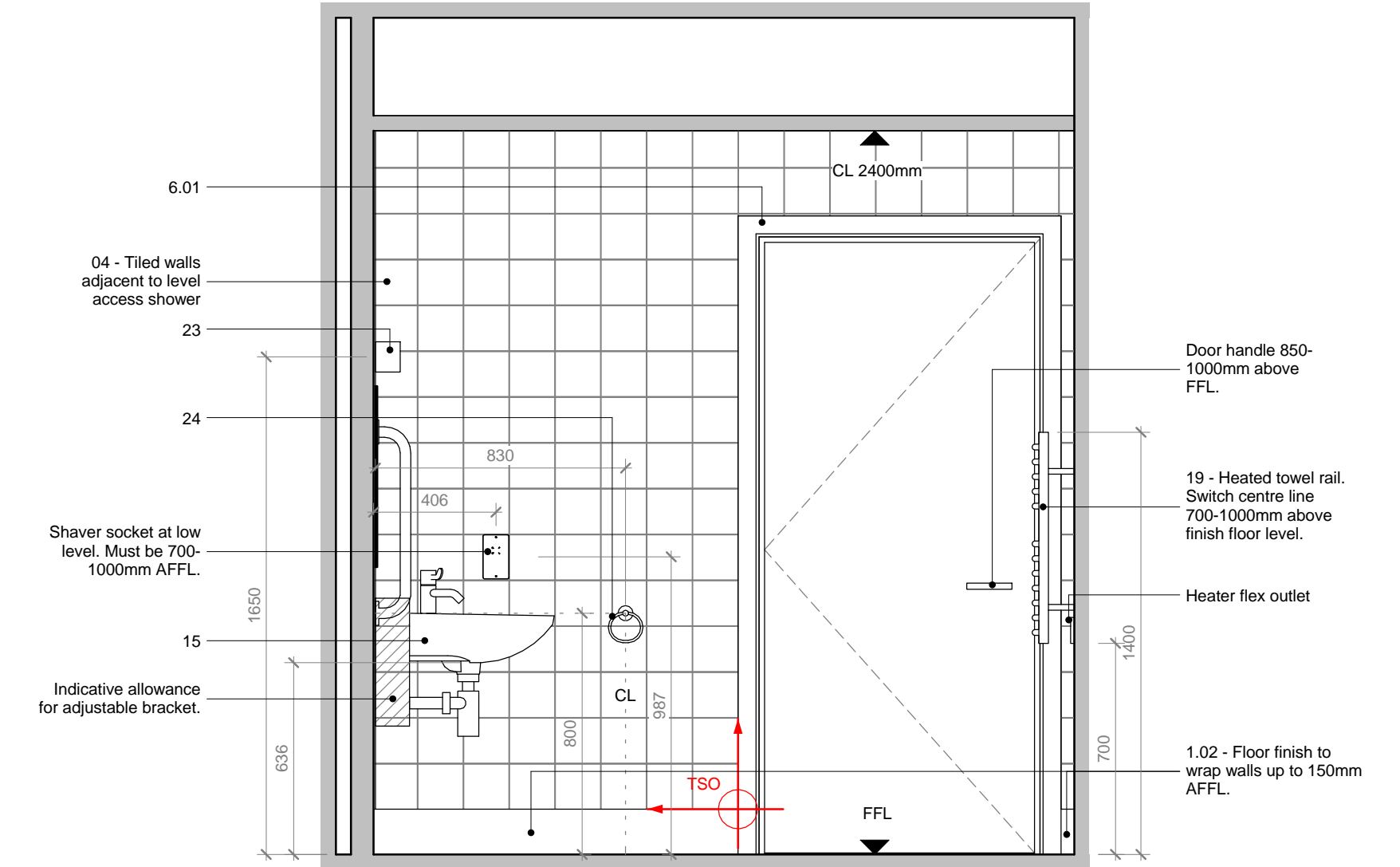




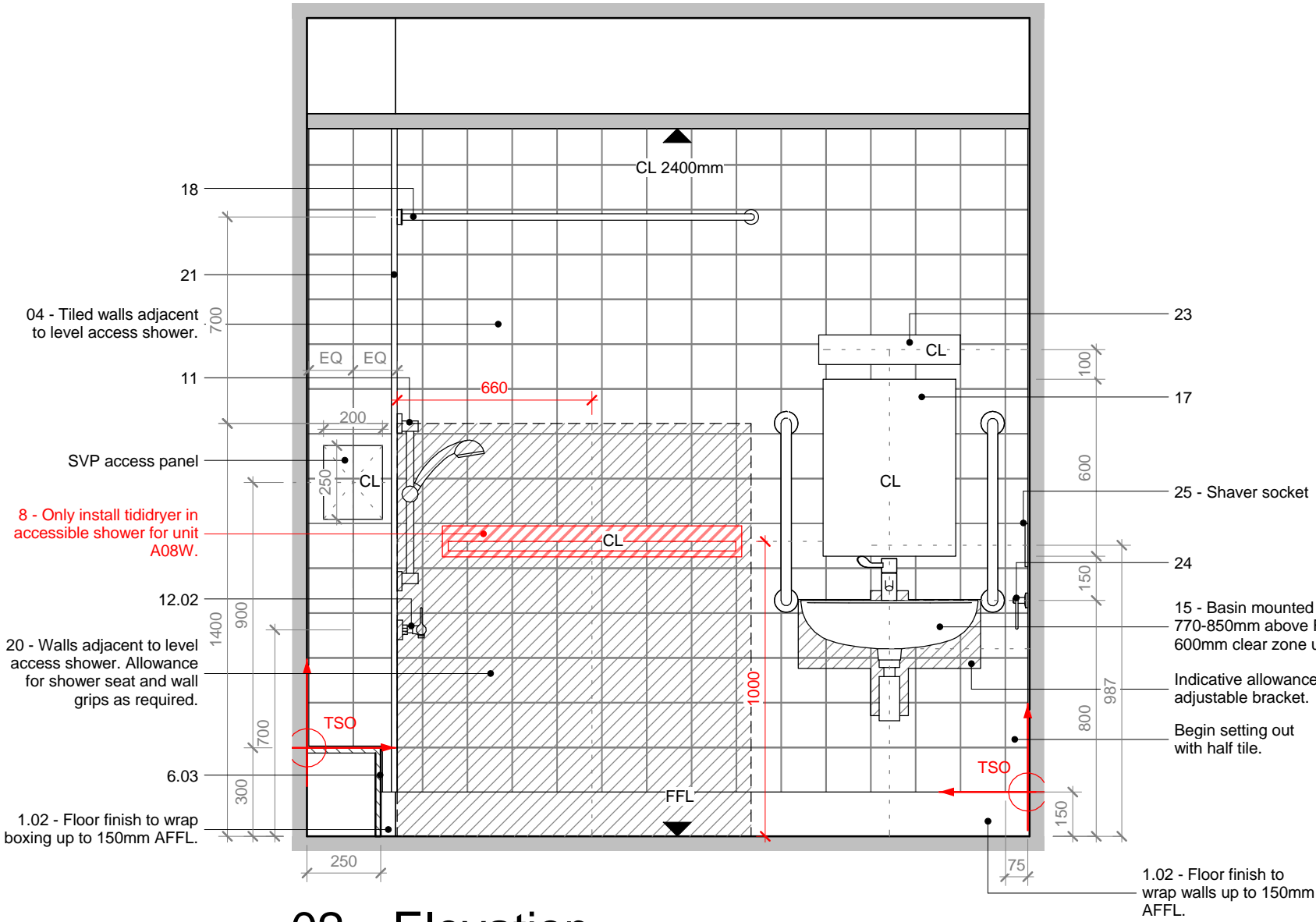
05 - Plan



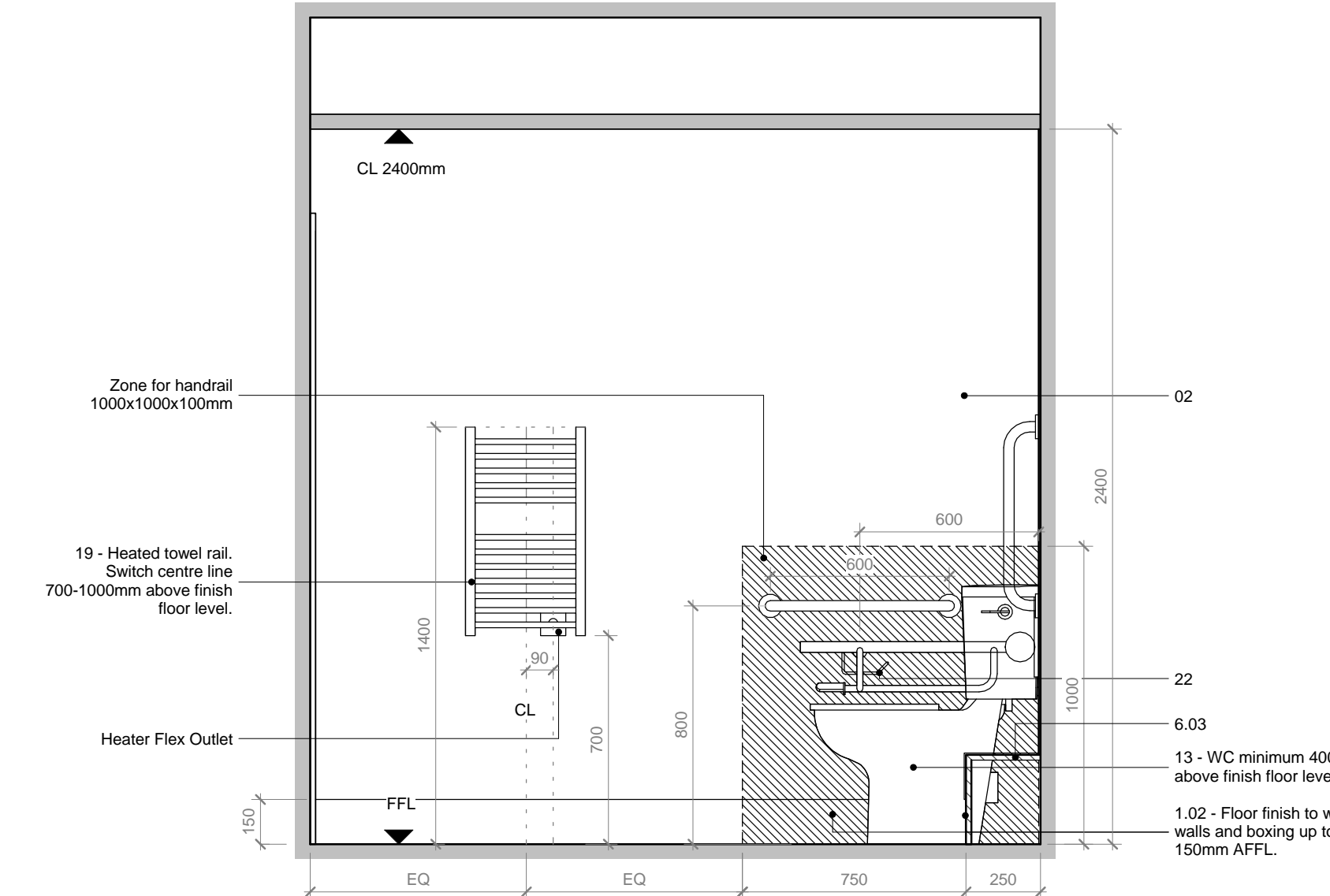
01 - Elevation



03 - Elevation



02 - Elevation



04 - Elevation

PLOT LOCATION	(H - Handed)
A03 H	
A08	

Affordable Interior Specification - Accessible Bathrooms		
	Item	Description
1.02	Floor Finish: Wet Room	Vinyl: Manufacturer, Polyflor; XL PU; Colour Porcelain 3880, Homogenous roll 2x20m. Floor finish to wrap walls up to 150mm AFFL. Specification TBC.
2	Wall Finish/Paint	Plaster/dry lining: 15mm plywood backing to all walls with fixtures. Dulux or better approved, Egg Shell Finish (one mist coat and two full coats), White
3	Ceiling Finish	Plaster/dry line: Dulux, Egg Shell Finish (one mist coat and two full coats), White
4	Wall Tiles	Tile: Manufacturer, H&R Johnson; 4mm Plain Colour Range, White, 150x150mm. Specification TBC.
5	Door	Refer to Door schedules 3200 series
6.01	Architrave	Architrave to be square edged with mitred corners. Dims: 18x100mm spray Paint Finish MDF, White
6.02	Skirting	Continue floor finish up to 150mm above floor finish level. 150mm skirting to all walls and boxing.
6.03	Boxing	Boxing to be square edged with mitred corners. Dims: W 250mm x H 300mm, 18mm board. Finish with tiles to match wall tiles, floor finish up to 150mm AFFL.
7	Ironmongery	All ironmongery Laidlaw.
8	Dryer	Tididryer: Manufacturer, Leifheit; Telegant 81 Protect Plus, Minimum of 6m of line. Only install tididryer in unit A08W.
9	Bath	Enamelled pressed steel with non-slip bottom, twin grip handles: Manufacturer, Twyford; Celtic bath, 1700x700mm, WHITE - Ref CE1572
10	Front Panel	Bath Panel Vinyl: Omnifit Bath panel, white gloss
11	Shower	Combined bath shower mixer on slider rail: Manufacturer Bristan; KIT100C, Chrome
12.01	Bath/Shower Mixer	Combined bath shower mixer: Manufacturer Bristan; Design Utility Lever thermostatic, Chrome
12.02	Shower Mixer	Manufacturer Bristan; Design Utility Lever thermostatic, Chrome
13	WC and Flush	Free Standing WC: Manufacturer Armitage Shanks; Contour 21 Close Coupled WC Suite, Lever Handle Flush. Seat and cover. No.2 60cm grab rails wall mouted, No.1 hinged rail to the right of the WC. White.
15	Wash Hand Basin	Wash-hand basins to be mounted on Care Plus adjustment bracket: Manufacturer, Armitage Shanks; Contour 21 Washbasin 60cm 1 Taphole, white, S2168. No.2 60cm grab rails wall mounted. Care Plus washbasin mounting bracket, no finish.
16	WHB Tap	Tap, Mixer: Manufacturer, Armitage Shanks; Contour 21 washbasin mixer, thermostatic 1 hole, long lever handle.
17	Mirror	A 600 x 450 mm mirror to be provided over each WHB (fitted one course of tiles above the basin)
18	Shower Screen	Waterproof, weighted shower curtain with rail over bath
19	Heating	Ladder style radiator: Manufacturer, JIS Europe; Camber 400 Curved Front, 700x400mm, overall projection 140mm, chrome.
20	Shower Seat	Shower Room Package: Manufacturer, Armitage Shanks; S6960(AC), Shower room pack with folding shower seat and back support in grey, 3 x 60cm grab rails, 2 x hinged rails and 2 x 45cm grab rails, lever operated thermostatic mixer for concealed supplies, shower handset holder, handset & hose, fixed short projection shower head. Lever operated diverter
21	Metal Angle	Angle to finish shower wall return, 20mm wide, chrome.
22	Toilet Roll Holder	Single Holder: Manufacturer Bristan; RD ROLL C, Chrome
23	Mirror Light	Combined light and shaver socket with long pull cord: Manufacturer, Concord 0053402, Elite white 11W LYNX-S PULL CORD + SHAVER. In addition to wall mounted shaver socket.
24	Towel Ring	Manufacturer, Carlisle Brass; LW05 DeLeau Tempo Range, Chrome
25	Shower Socket	Dual Voltage Shaver Socket: Manufacturer, MK Electric; K701WHI, White. Center line 950mm AFFL.

TO BE PRINTED IN COLOUR



All dimensions are in mm unless otherwise stated
All dimensions to be verified on site before proceeding with the work
Any discrepancies to be notified in writing to Architect immediately
All boundaries indicative only and to be confirmed by others

NOTE

Contractor drawings and samples to be submitted for approval prior to fabrication. Any discrepancies must be reported to the Architect.

All dimensions are in mm unless stated otherwise
All dimensions to be site checked prior to fabrication/construction

. For Frame Dimensions refer to window schedules 01 SC 3100 Series.
. For Door and Windows incorporated in one of the Sets, please refer to 01 SC 3100 300 Series for S/O and Frame dimensions.

SSL – Structural Slab Level
SFL – Screed Floor Level – Top of the Screed
FFL – Finish Floor Level (including finish eg: carpet or tiles)

This drawing must be read in conjunction with all relevant Specifications and Consultant Drawings. Specific drawing information can be found under the following drawing series:

0000	Site	3200	Internal Openings
0010	GA Plans & Reference Plans	3400	Metal Works
0020	GA Elevations	3500	Suspended Ceilings
0030	GA Sections	3600	Balconies
0040	3D Views	4300	Floors
0400	Fire Strategy	5000	Mainly Ducted
1000	Substructure	6600	Mainly Electrical
2000	Structure Coordination	7300	Kitchen
2100	External Walls	7400	Bathrooms
2200	Internal Walls	7500	Cleaning and Maintenance
2400	Stairs and Ramps	7600	Storage and Cupboards
2500	Concrete Finishes	7700	Entrances and Lobbies
2700	Roof	SCH31	Residential Interior Finishes
3000	Curtain Walling	SCH34	Communal Interior Finishes
3100	External Openings		

02	01.03.19	Shower rail added. Revisions as per revision clouds.	DH
01	12.02.19	Shaver socket and heater flex outlet added as per CB comments. Towel holder position lowered. Tiles added to boxing.	DH
	25.01.19	Issued as per Ardmore request.	DH
REV	DATE	NOTES	INT

STAGE 05 - CONSTRUCTION

HUTCHINSON & PARTNERS

3.14 The Record Hall, 16-16A Baldwin's Garden, London, EC1N 7RJ
t: 020 3176 8196 e: info@hutchinsonandpartners.com
www.hutchinsonandpartners.com

JOB TITLE
Stanley Sidings, 101 Camley Street, Camden

DRAWING TITLE / LOCATION
Intermediate and Social Rent - Bathroom - 2.05 Acc

DRAWN BY DH	CHECKED GFV	SCALE 1:20 @ A1 / 1:40 @ A3	STATUS STAGE 05
PROJECT 16022	DRAWING NO 01 AL 7400 008	REVISION 02	

CLIENT



All dimensions are in mm unless otherwise stated
All dimensions to be verified on site before proceeding with the work
Any discrepancies to be notified in writing to Architect immediately
All boundaries indicative only and to be confirmed by others

NOTE

Contractor drawings and samples to be submitted for approval prior to fabrication. Any discrepancies must be reported to the Architect.

All dimensions are in mm unless stated otherwise
All dimensions to be site checked prior to fabrication/construction

. For Frame Dimensions refer to window schedules 01 SC 3100 Series.
. For Door and Windows incorporated in one of the Sets, please refer to 01 SC 3100 300 Series for S/O and Frame dimensions.

SSL – Structural Slab Level
SFL – Screed Floor Level – Top of the Screed
FFL – Finish Floor Level (including finish eg: carpet or tiles)

This drawing must be read in conjunction with all relevant Specifications and Consultant Drawings. Specific drawing information can be found under the following drawing series:

0000	Site	3200	Internal Openings
0010	GA Plans & Reference Plans	3400	Metal Works
0020	GA Elevations	3500	Suspended Ceilings
0030	GA Sections	3600	Balconies
0040	3D Views	4300	Floors
0400	Fire Strategy	5000	Mainly Ducted
1000	Substructure	6600	Mainly Electrical
2000	Structure Coordination	7300	Kitchen
2100	External Walls	7400	Bathrooms
2200	Internal Walls	7500	Cleaning and Maintenance
2400	Stairs and Ramps	7600	Storage and Cupboards
2500	Concrete Finishes	7700	Entrances and Lobbies
2700	Roof	SCH31	Residential Interior Finishes
3000	Curtain Walling	SCH34	Communal Interior Finishes
3100	External Openings		

PLOT LOCATION (H - Handed)

A09W

Shared Ownership Interior Specification - Accessible bathrooms

	Item	Description
1	Floor Finish, Wet Room	Tile: Domus - Porcelain Stone Tiles; Black Peak, Colour DABP 03, Natural Grip finish, 600 x 300 x 9mm tiles
2.01	Wall Finish/Paint	Plaster/dry line: Dulux Trade, vinyl matt emulsion (one mist coat and two full coats)
2.02	Wall Finish/Cladding	Wall Cladding: Manufacturer, Neolith; 12mm Basalt Black Matte, cut to size (at 900mm AFFL)
3	Ceiling Finish	Plaster/dry line: Dulux Trade, vinyl matt emulsion (one mist coat and two full coats), Brilliant White
4	Wall Tiles	Tile: Manufacturer, Domus; 10mm Bamboo / honed, Colour DNSDD503, 293x293mm. Orient pattern pointing vertically.
5	Door Ironmongery	Hinges, Thumbturn Lock and Handle: Manufacturer, Buster + Punch; Key Escutcheon; Smoked Bronze
6.01	Architrave and Skirting	Architrave Dims: 18X60mm finished dims. Square edged with mitred corners.
6.02	Architrave and Skirting	Skirting Dims: 18x100 basalt to match basalt wall tile. Square edged with mitred corners.
6.03	Architrave and Skirting	Skirting Dims: 18X100mm spray finish MDF on paint finish walls. Square edged with mitred corners.
7	Metal Angle	25mm angle. Finish to match bespoke shower screen from other ensuite types.
8	Dryer	3 No. Hansgrohe towel rails in front of integrated heater pad.
9	Boxing	300 x 250mm boxing, Manufacturer Neolith, Lamont Stone; 12mm Basalt Black Matte, cut to size. Joints to be kept to the minimum.
10	WC and Flush	Free Standing WC: Manufacturer Armitage Shanks; Contour 21 Close Coupled WC Suite, Lever Handle Flush, Seat and cover. No.2 60cm grab rails wall mounted, No.1 hinged rail to the left of the WC. White.
11	Wash Hand Basin	Wash-hand basins to be mounted on Care Plus adjustment bracket: Manufacturer, Armitage Shanks; Contour 21 Washbasin 60cm 1 Taphole, white, S2168. No.2 60cm grab rails wall mounted. Care Plus washbasin mounting bracket, no finish.
12	WHB Tap	Tap, Mixer: Manufacturer, Armitage Shanks; Contour 21 washbasin mixer, thermostatic 1 hole, long lever handle.
13	Mirror	A 600 x 450 mm mirror to be provided over each WHB
14	Shower Seat	Shower Room Package: Manufacturer, Armitage Shanks; S6960(AC), Shower room pack with folding shower seat and back support in grey, 3 x 60cm grab rails, 2 x hinged rails and 2 x 45cm grab rails, lever operated thermostatic mixer for concealed supplies, shower handset holder, handset & hose, fixed short projection shower head. Lever operated diverter
15	Shower Mixer	Hansgrohe ONE thermostat 3 way
16	Shower	Shower Arm and 2 Jet Hand Shower: Hansgrohe
17	Mirror Light	Combined light and shaver socket with long pull cord: Manufacturer, Concord 0053402. Elite white 11W LYNX-S PULL CORD + SHAVER. In addition to wall mounted shaver socket.
18	Robe Hooks	Single hook: Manufacturer, Hansgrohe; Axor Uno, 340 Brushed Black Chrome, 40mm
19	Toilet Roll Holder	Manufacturer: Hansgrohe, Axor Uno; 340 Brushed Black Chrome, 126mm
20	Shaver Socket	To match all electric fittings.
21	Shower Screen	Waterproof, weighted shower curtain with rail over bath

01	01.03.19	Boxing beneath WC added. Shower rail added.	DH
-	12.02.19	Issued as per Ardmore request.	DH
REV	DATE	NOTES	INT

STAGE 05 - CONSTRUCTION

HUTCHINSON & PARTNERS

3.14 The Record Hall, 16-16A Baldwin's Garden, London, EC1N 7RJ
t. 020 3176 8196 e. info@hutchinsonandpartners.com
www.hutchinsonandpartners.com

JOB TITLE
Stanley Sidings, 101 Camley Street, Camden

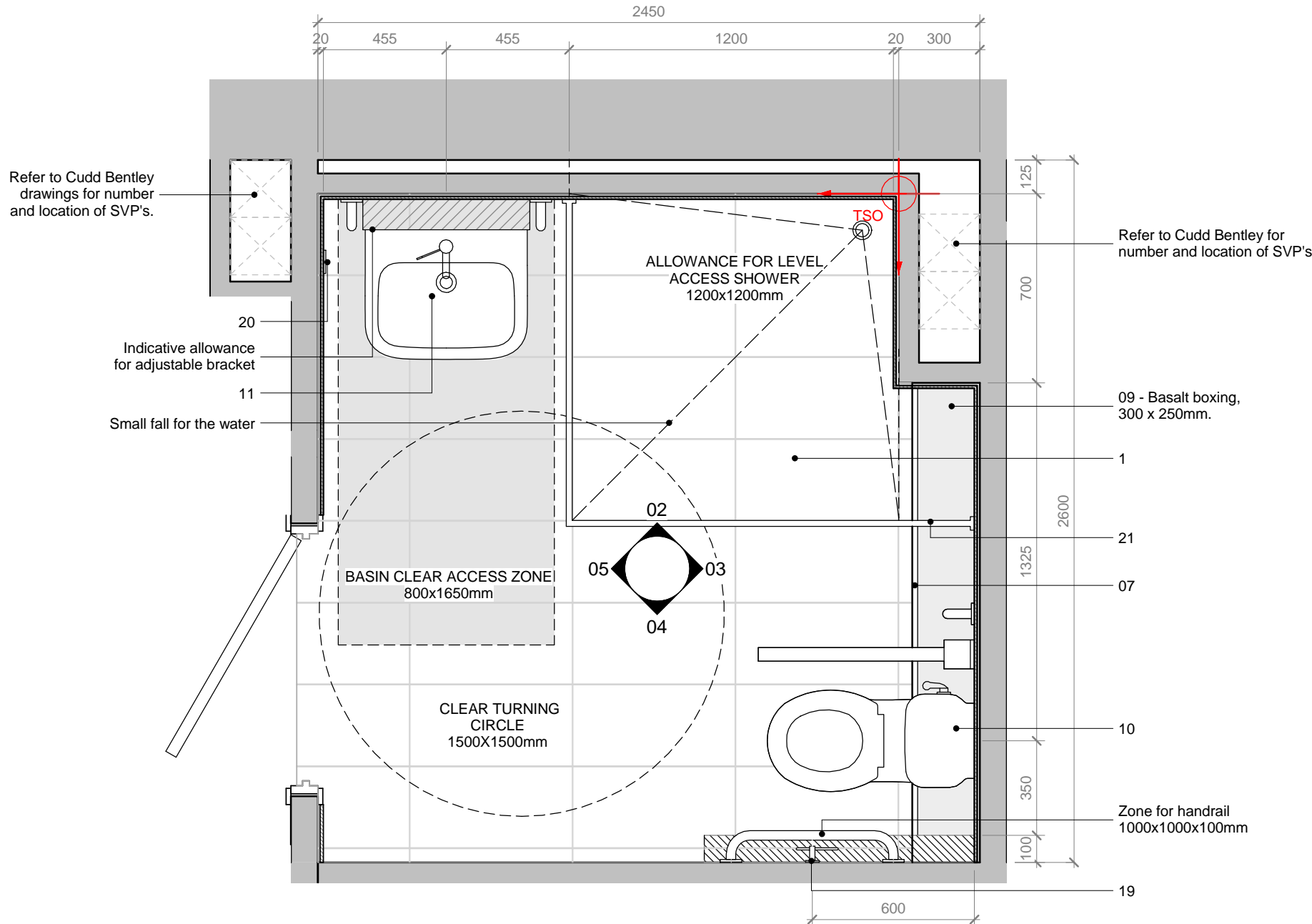
DRAWING TITLE / LOCATION
Shared Ownership - Bathroom - Type 2.05 (Acc.)

DRAWN BY DH	CHECKED GFV	SCALE 1:20 @ A1 / 1:40 @ A3	STATUS STAGE 05
PROJECT 16022	DRAWING NO 01 AL 7400 019	REVISION 01	

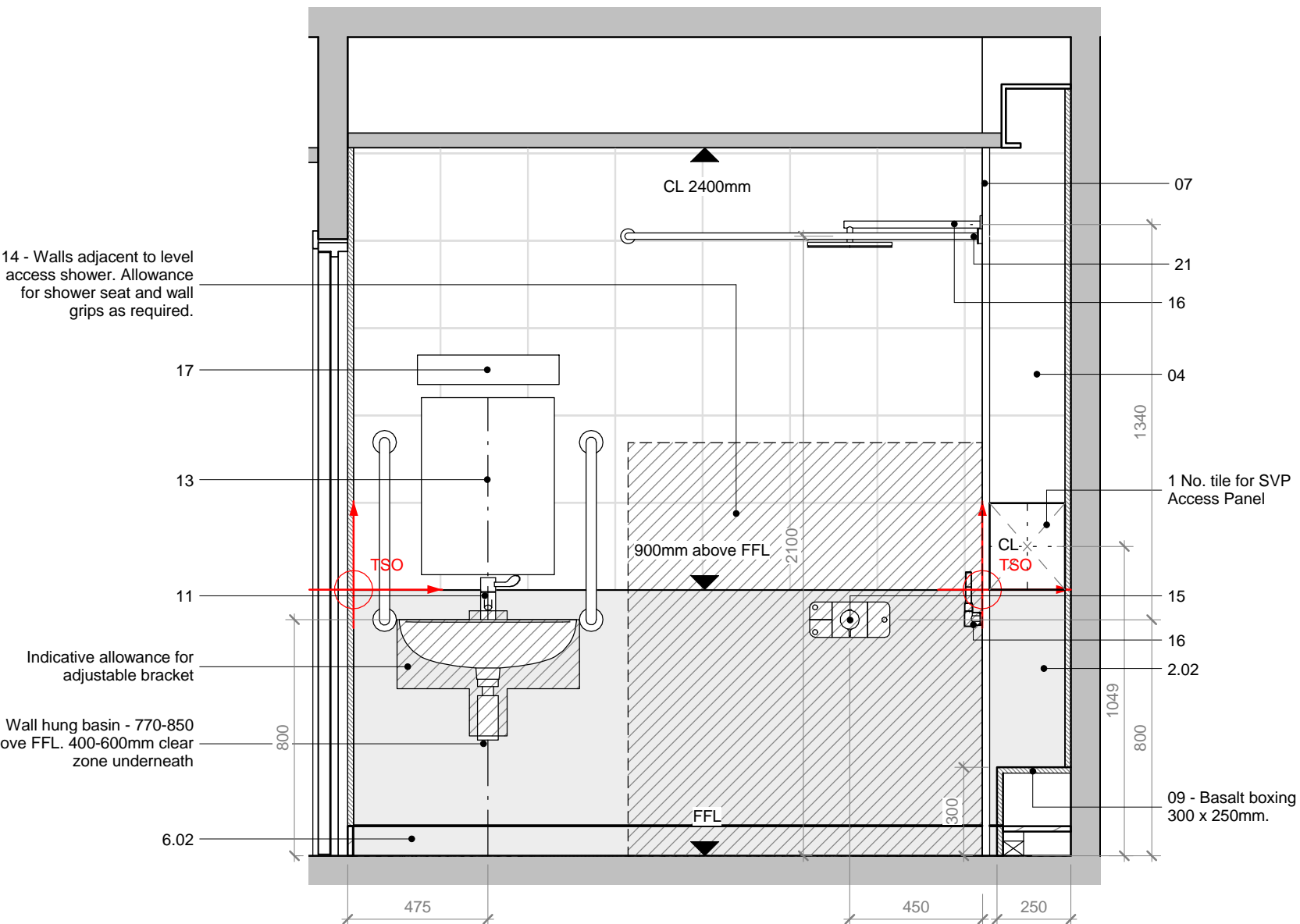
CLIENT



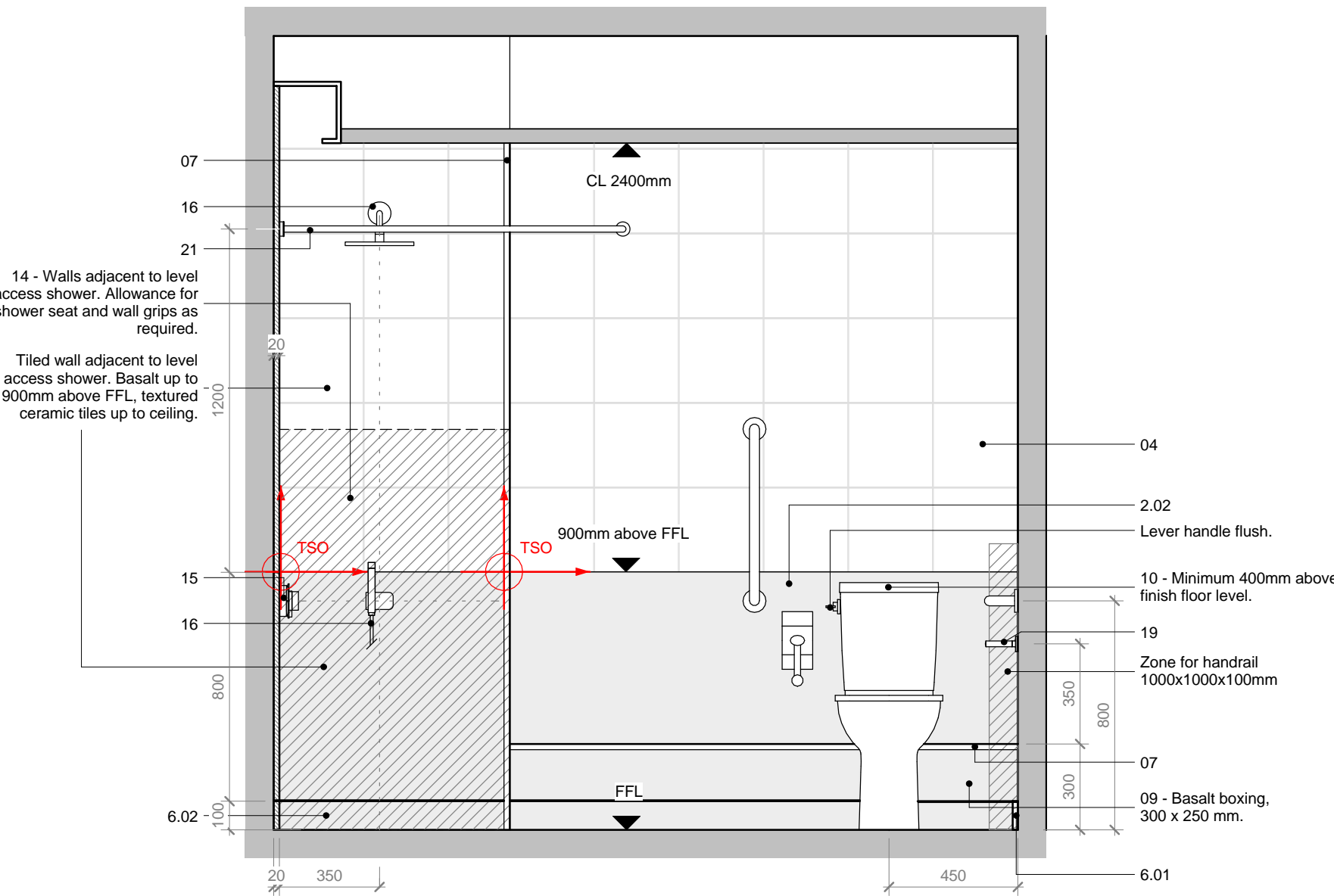
© 2018 HUTCHINSON & PARTNERS Limited



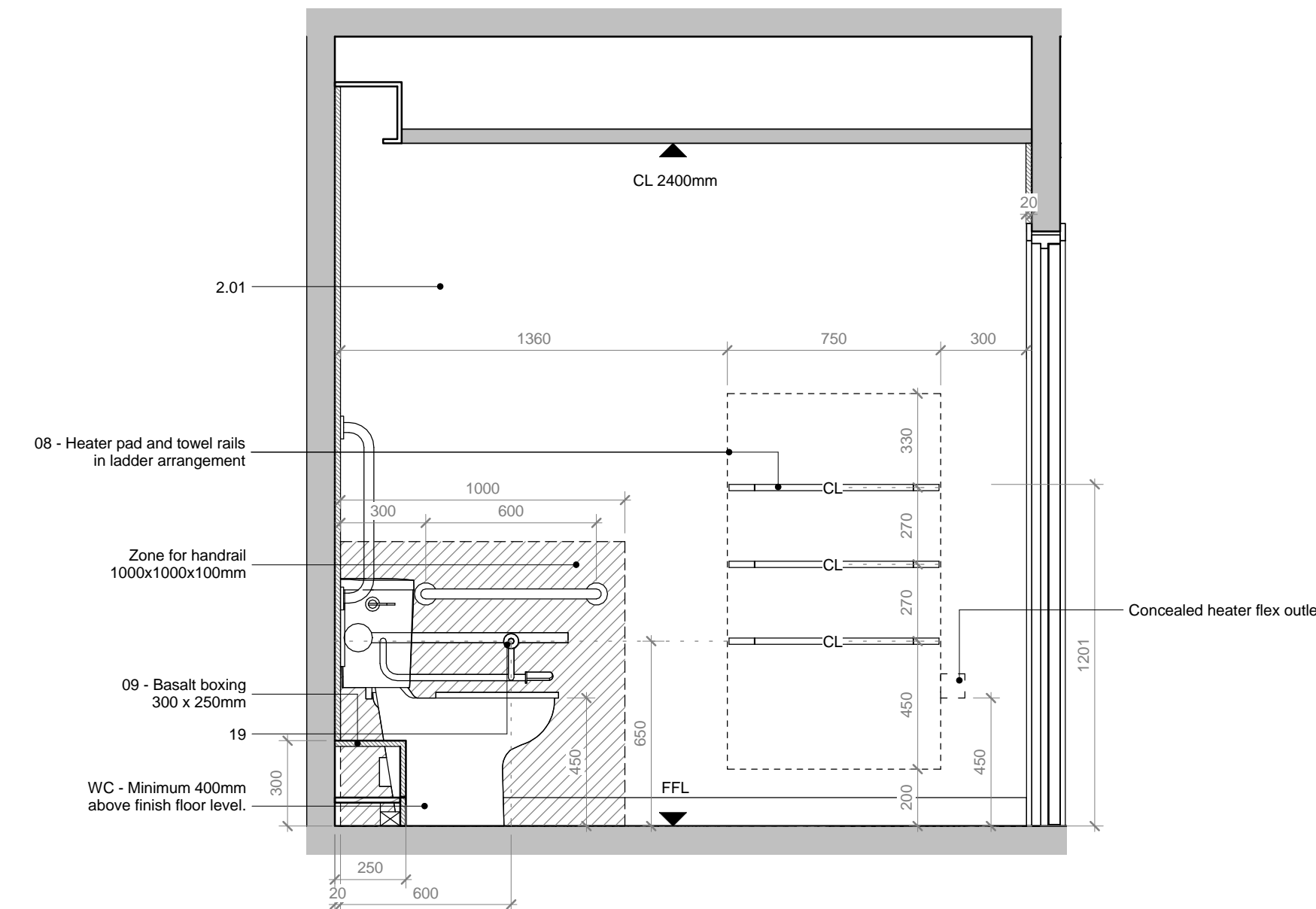
01 - Plan



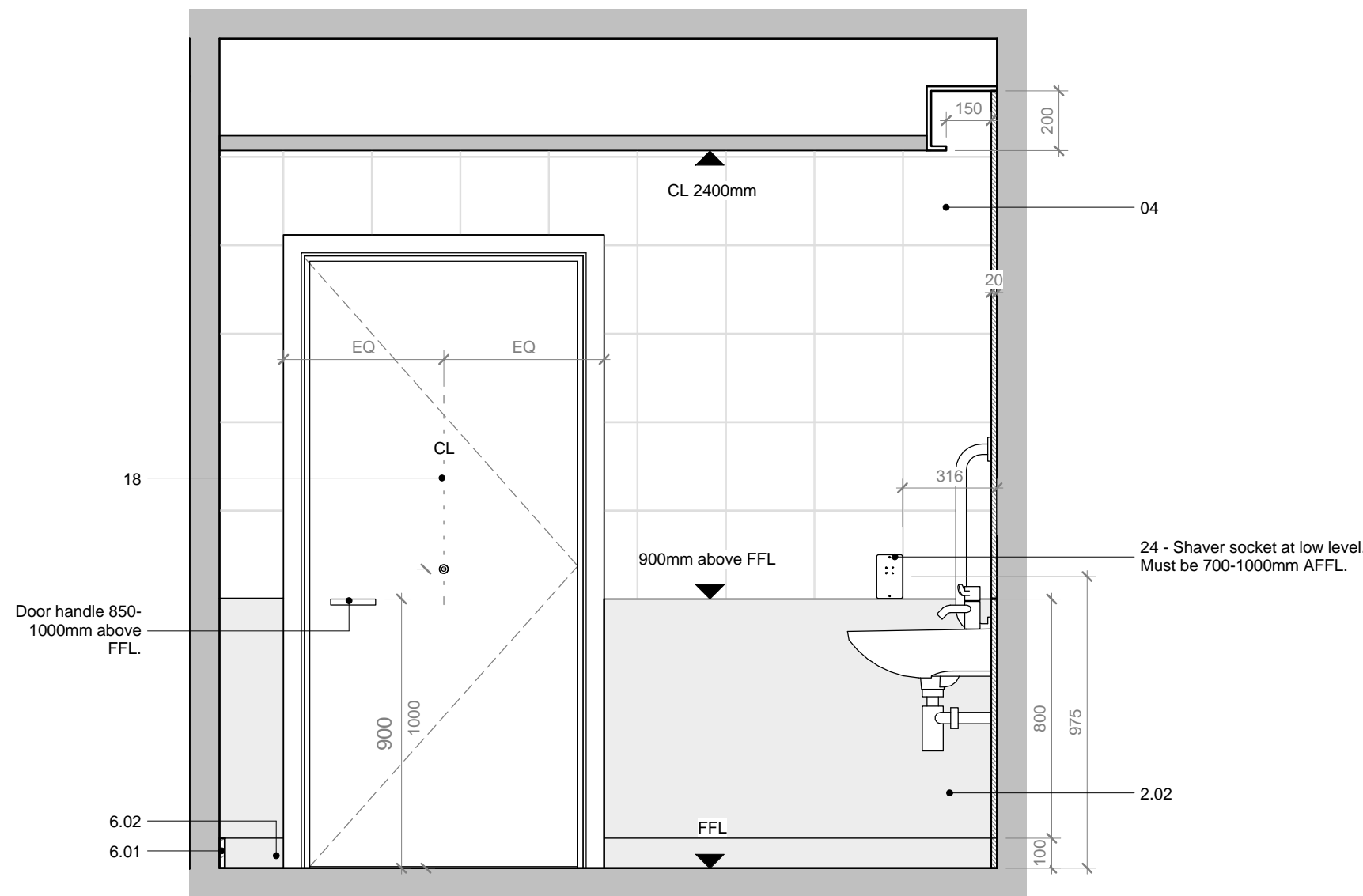
02 - Elevation



03 - Elevation



04 - Elevation



05 - Elevation



2/10/2019 15:58:58