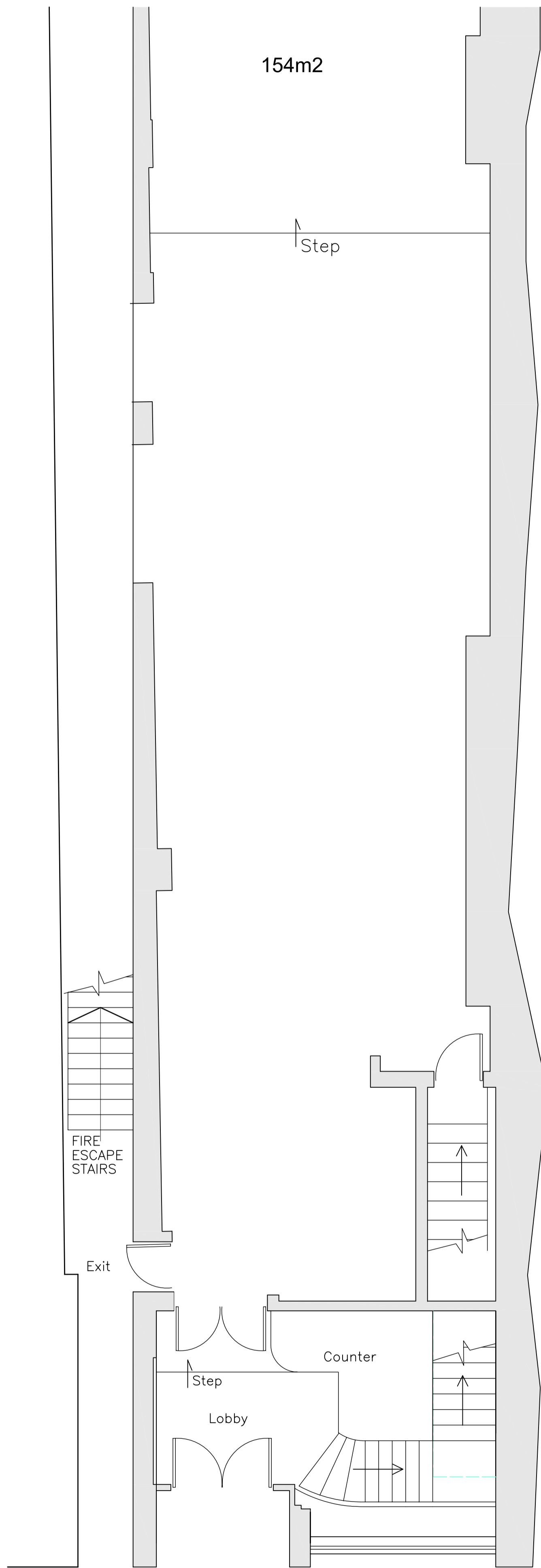
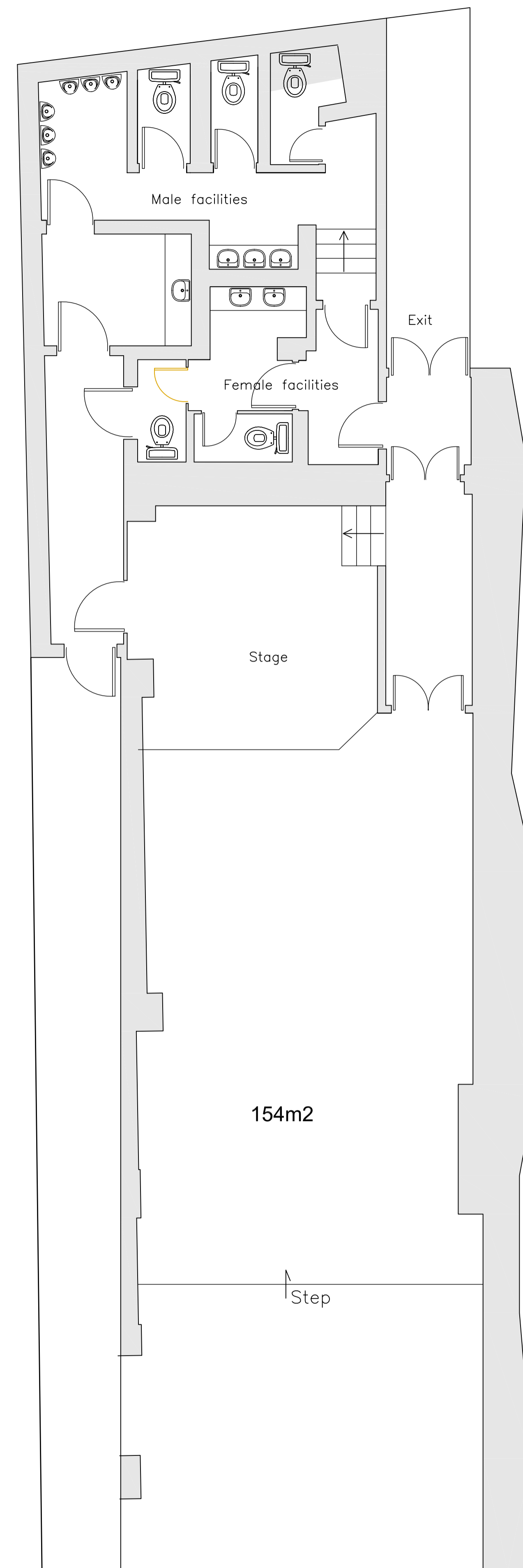


BASEMENT PLAN



238m2
GROUND FLOOR PLAN (FRONT SECTION)



154m2
GROUND FLOOR PLAN (REAR SECTION)

REVISIONS
Hillmandesign Ltd
Architectural Practice

24 Crichton Road
Carshalton Beeches
Surrey, SM5 3LS
t:(020) 8715 5584
f:(020) 8715 8134
mail@hillmandesign.co.uk

PROJECT
THE BLACK CAP
171 CAMDEN HIGH STREET,
CAMDEN, LONDON, NW1 7JY

DRAWING
EXISTING
GROUND FLOOR BAR / CLUB
BASEMENT LEVEL

SCALE 1:50 DATE JAN 13

DRAWING NO. BLK/P/2/103 REVISION