



APPROVED GLOUCESTER AVENUE ELEVATION 173_GE_00 REV H (CONSENTED VIA 2016/5890/P)

2.9 GLOUCESTER AVE ELEVATION



PROPOSED GLOUCESTER AVENUE ELEVATION 173_PL5_GE_00 REV A



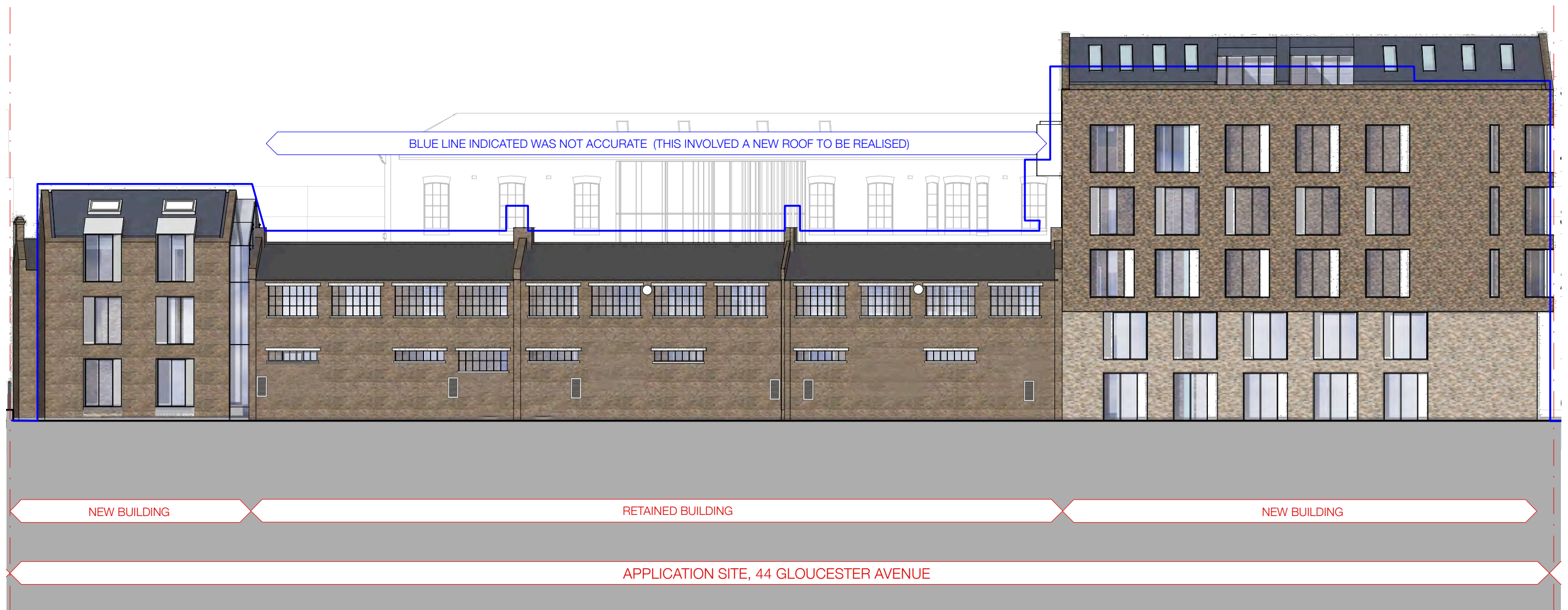
APPROVED SUNNY MEWS 173_GE_01 REV E (CONSENTED VIA 2016/5890/P)

2.10 SUNNY MEWS ELEVATION

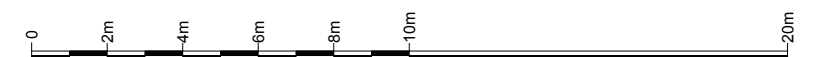


PROPOSED SUNNY MEWS ELEVATION 173_PL5_GE_01 REV A





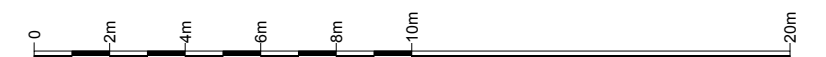
APPROVED NETWORK RAIL ELEVATION 173_GE_02 REV E (CONSENTED VIA 2016/5890/P)



2.11 NETWORK RAIL ELEVATION



PROPOSED NETWORK RAIL ELEVATION 173_PL5_GE_02 REV A



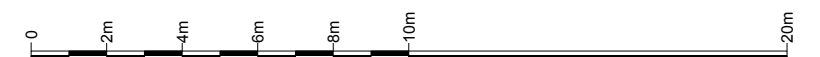


APPROVED SOUTH FACING ELEVATION 173_GE_03 REV E (CONSENTED VIA 2016/5890/P)

2.12 SOUTH FACING ELEVATION



PROPOSED SOUTH FACING ELEVATION 173_PL5_GE_03 REV *



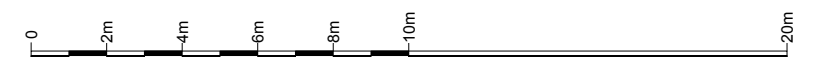


APPROVED SECTION A 173_GS_00 REV C (CONSENTED VIA 2016/5890/P)

2.13 SECTION A



PROPOSED SECTION A 173_PL5_GS_00 REV *





APPROVED SECTION B 173_GS_01 REV D (CONSENTED VIA 2016/5890/P)

