

2.0

PROPOSED SCHEME CHANGES

- 2.1

Changes to Basement Plan
- 2.2

Changes to Ground Floor
- 2.3

Changes to First Floor
- 2.4

Changes to Second Floor
- 2.5

Changes to Third Floor
- 2.6

Changes to Fourth Floor
- 2.7

Changes to Fifth Floor Plan
- 2.8

Changes to Gloucester Avenue Elevation
- 2.9

Changes to Sunny Mews Elevation
- 2.10

Changes to Network Rail Elevation
- 2.11

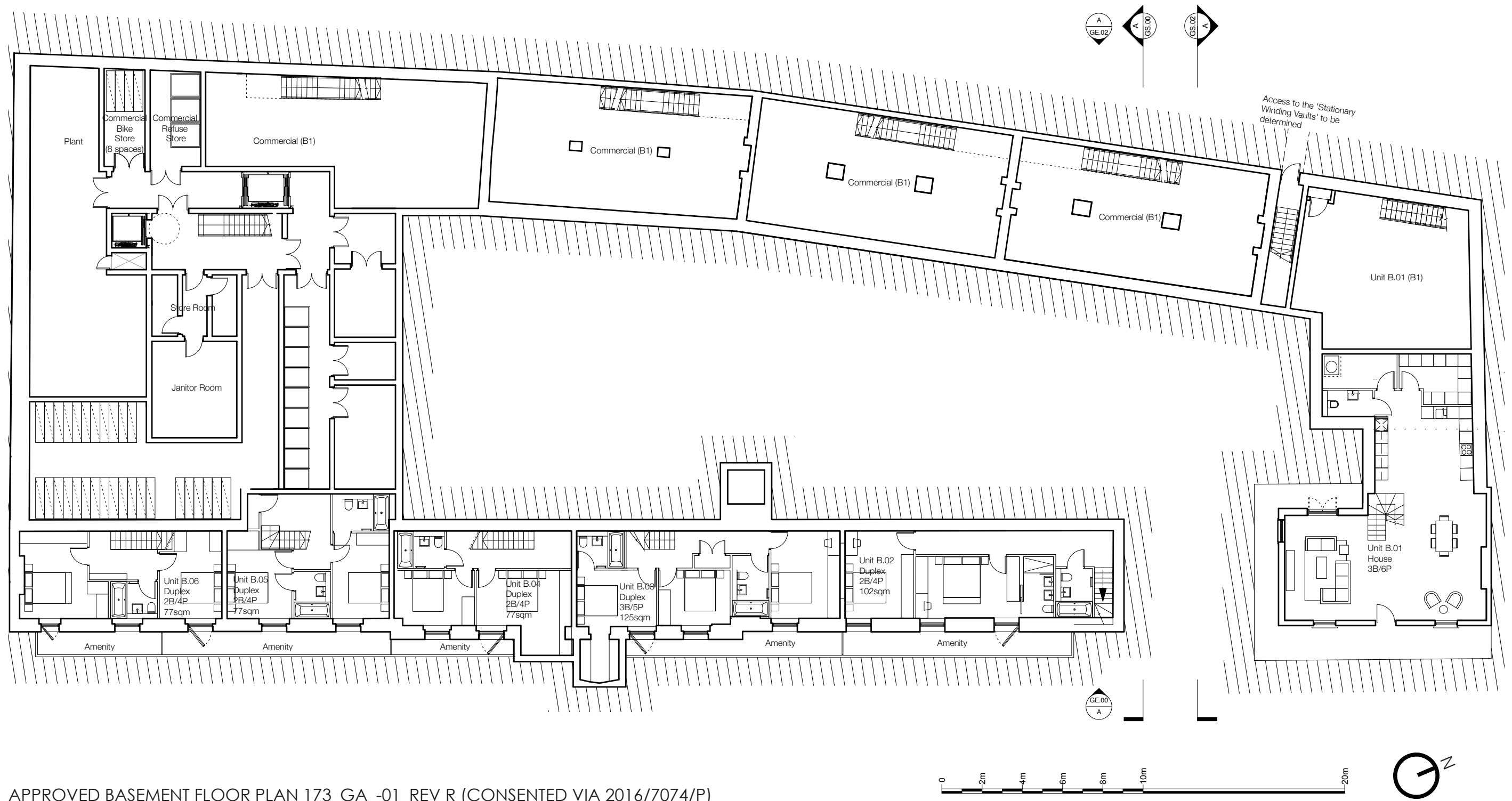
Changes to South Facing Elevation
- 2.12

Changes to Section A
- 2.13

Changes to Section B
- 2.14

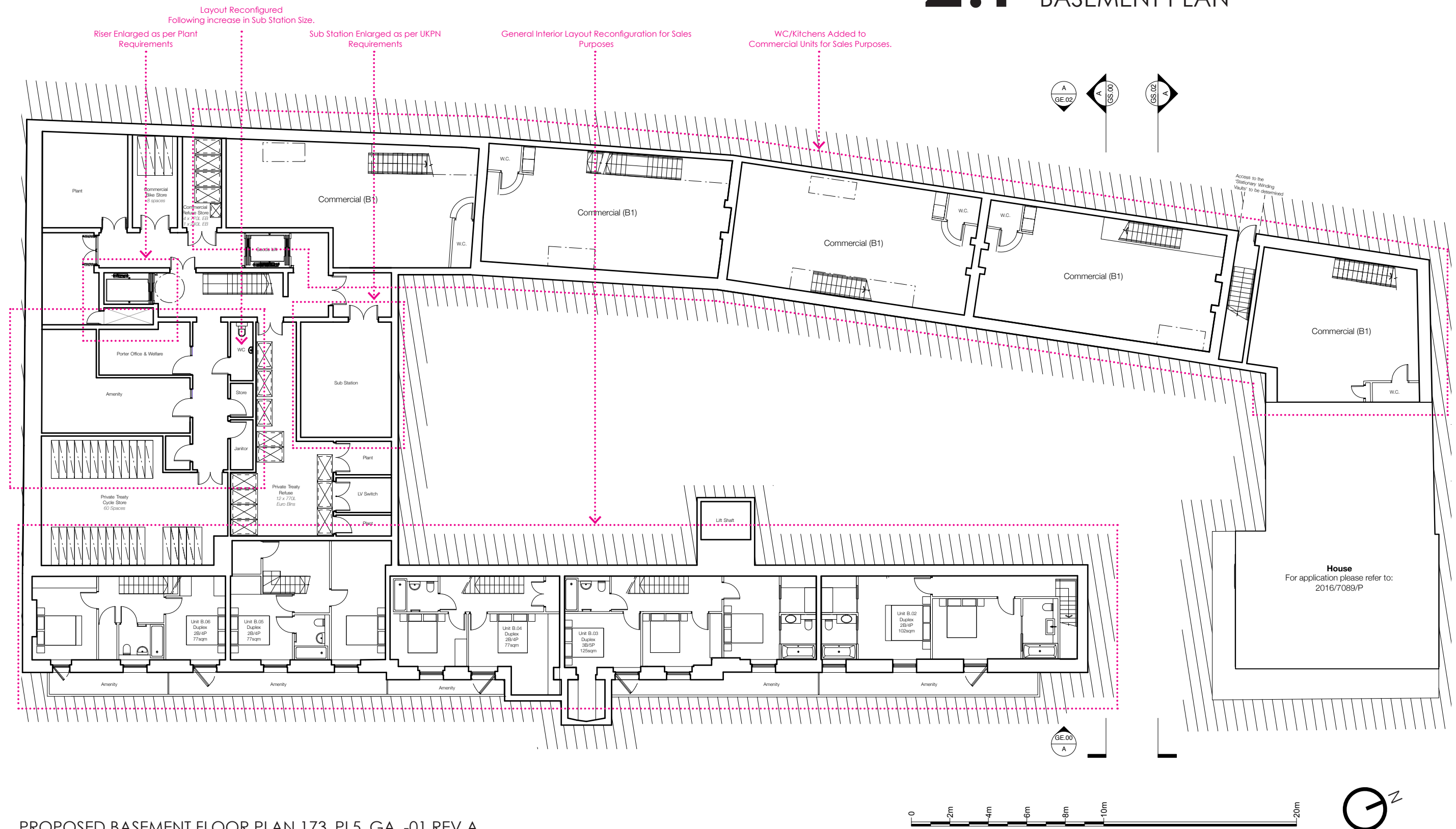
Changes to Section C
- 2.15

Changes to Section D

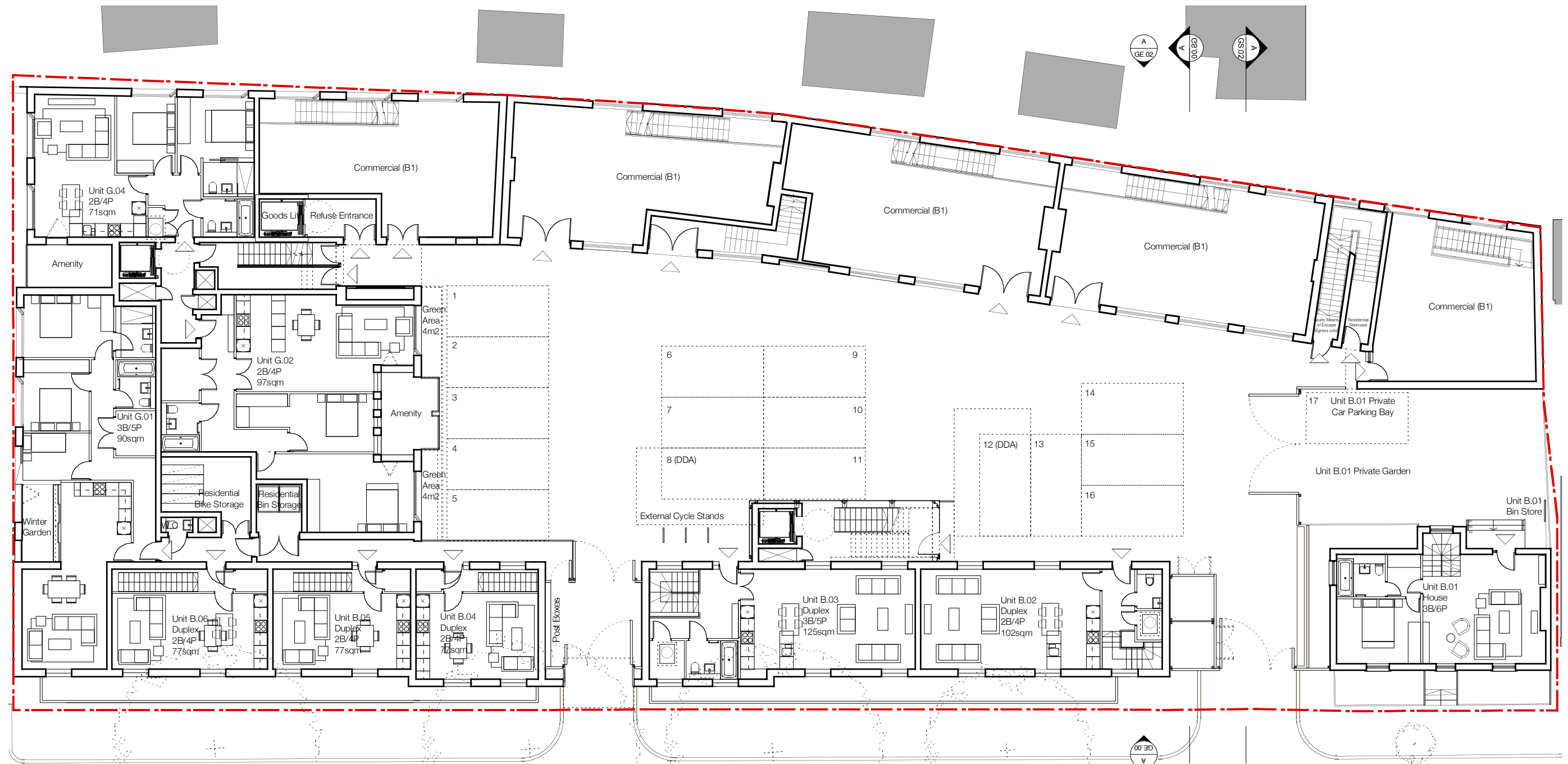


APPROVED BASEMENT FLOOR PLAN 173_GA_-01_REV R (CONSENTED VIA 2016/7074/P)

2.1 BASEMENT PLAN



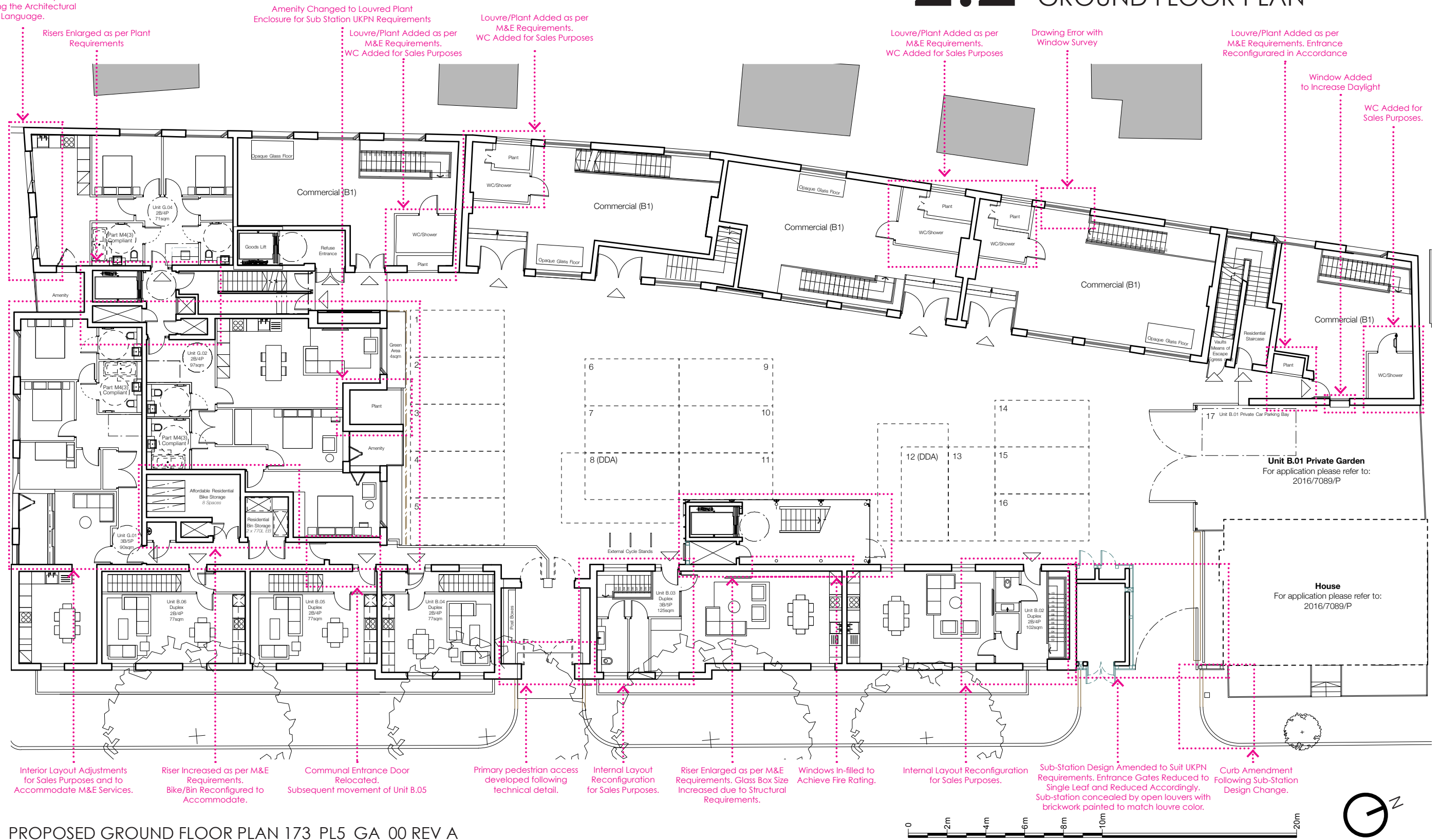
PROPOSED BASEMENT FLOOR PLAN 173_PL5_GA_-01 REV A

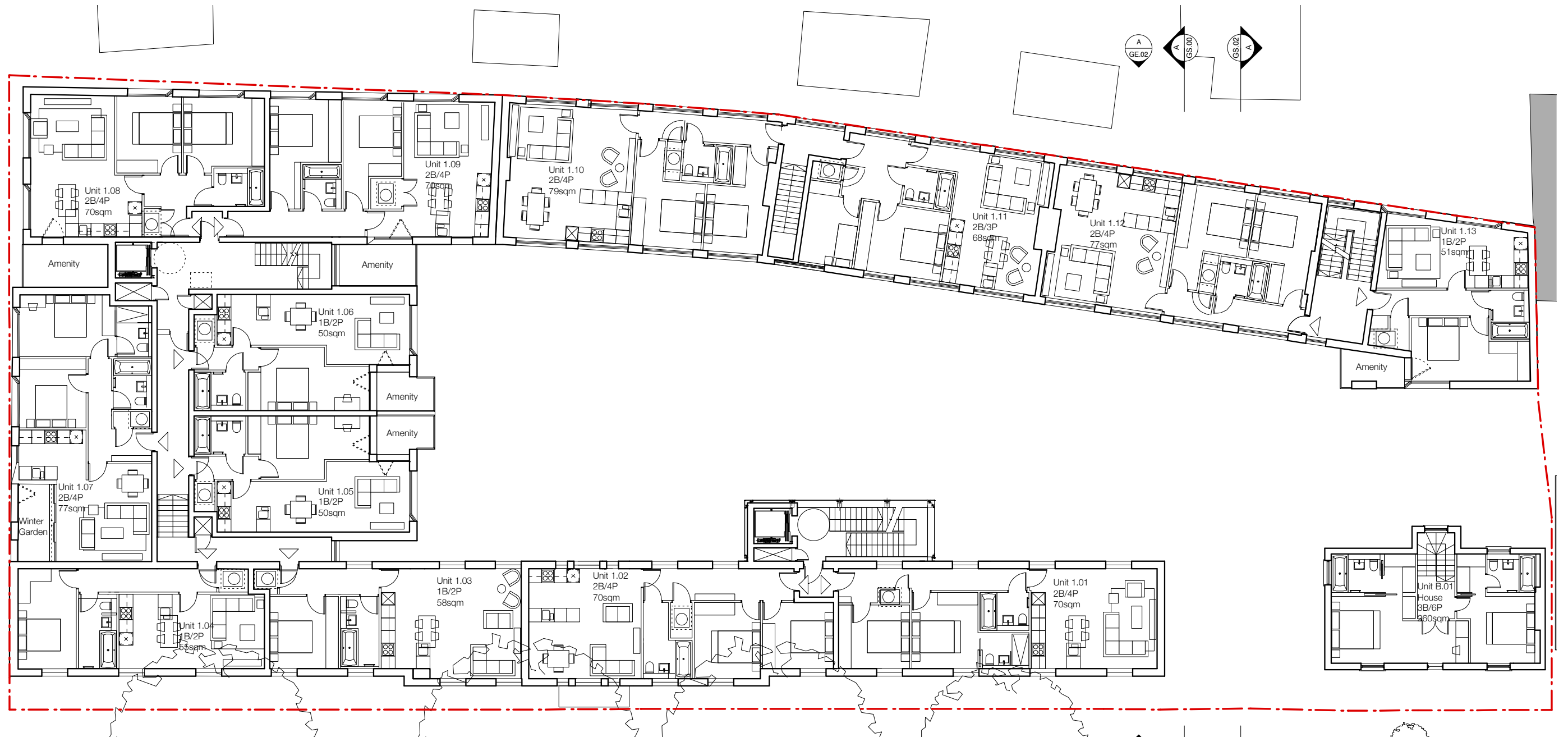


APPROVED GROUND FLOOR PLAN 173_GA_00 REV N (CONSENTED VIA 2016/7074/P)

2.2 GROUND FLOOR PLAN

Building Facade Angle
Adjusted for Buildability whilst
Retaining the Architectural
Language.





APPROVED FIRST FLOOR PLAN 173_GA_01 REV J (CONSENTED VIA 2016/5890/P)

2.3 FIRST FLOOR PLAN

Building Facade Angle
Adjusted for Buildability whilst
Retaining the Architectural
Language.

Risers Enlarged as per Plant
Requirements

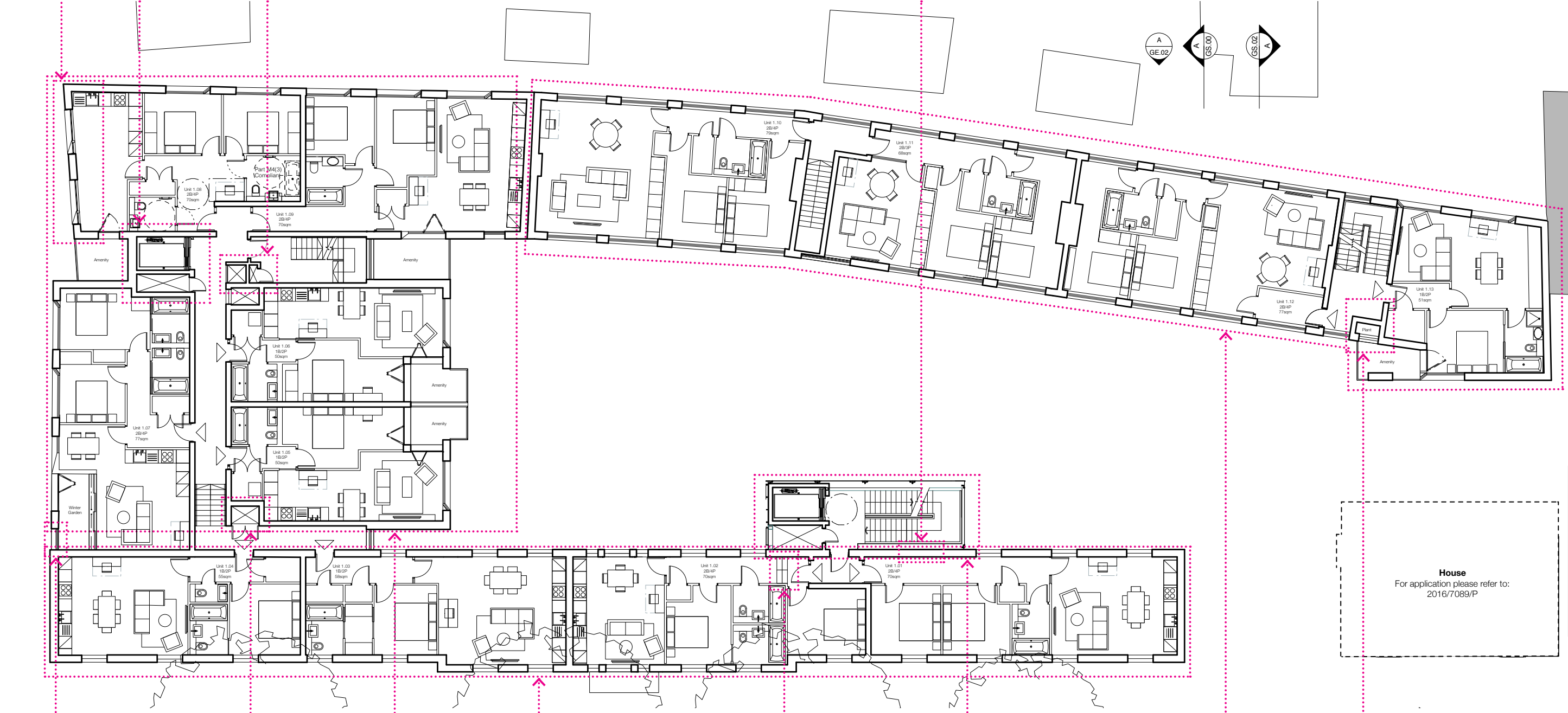
Risers Added as per
Plant Requirements

Window Infilled to
Achieve Fire Rating

A
GE.02

A
GS.00

GS.02
A



Glass Balustrade Added
for Guarding.

Riser Increased
as per M&E Requirements

Block B Interior
Layouts Adjusted for
Marketing Purposes.

Block A Interior
Layouts Adjusted for
Marketing Purposes.

Stair Added to Accommodate
Existing Internal Level Change

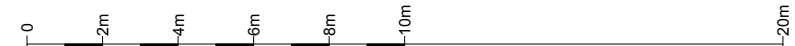
Riser Enlarged as per M&E
Requirements. Glass Box Size
Increased due to Structural
Requirements.

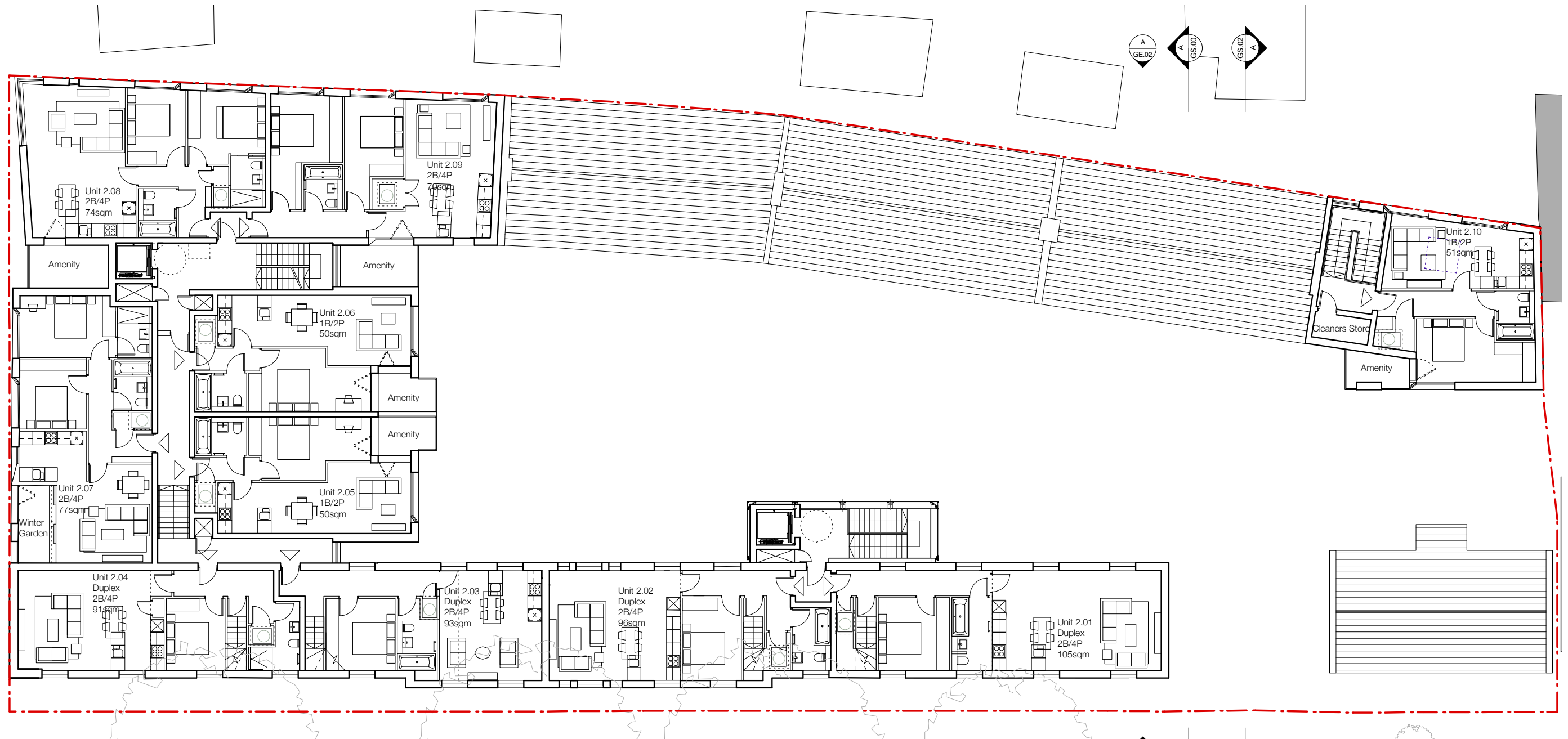
Block C/D Interior
Layouts Adjusted for
Marketing Purposes.

Plant Room Added
as per M&E Requirements

House
For application please refer to:
2016/7089/P

PROPOSED FIRST FLOOR PLAN 173_PL5_GA_01 REV *





APPROVED SECOND FLOOR PLAN 173_GA_02 REV H (CONSENTED VIA 2016/5890/P)



2.4 SECOND FLOOR PLAN

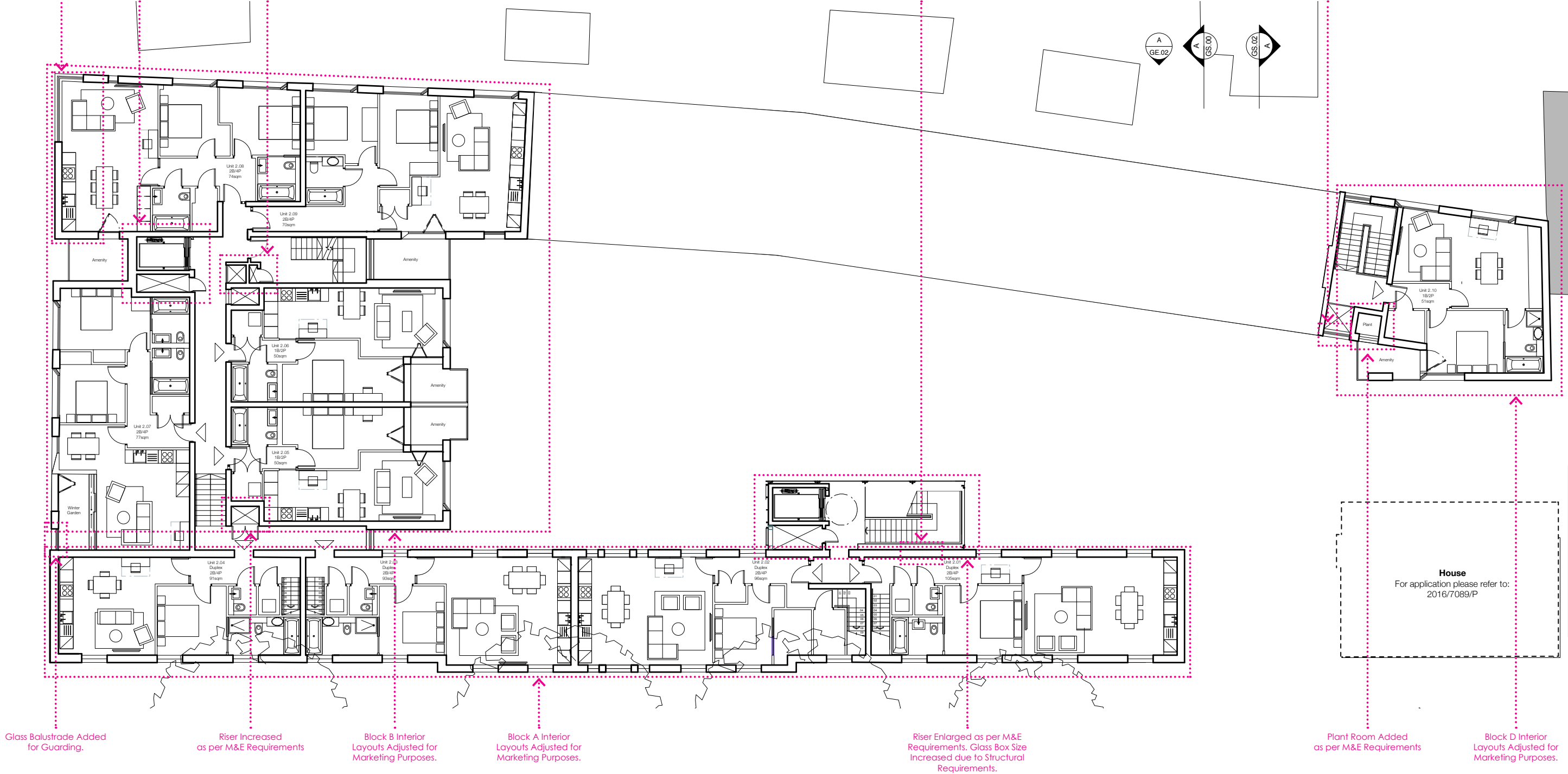
Building Facade Angle
Adjusted for Buildability whilst
Retaining the Architectural
Language.

Risers Enlarged as per Plant
Requirements

Risers Added as per
Plant Requirements

Window Infilled to
Achieve Fire Rating

Window Added to Drawing
(Previous Issue Drawing Error)



Glass Balustrade Added
for Guarding.

Riser Increased
as per M&E Requirements

Block B Interior
Layouts Adjusted for
Marketing Purposes.

Block A Interior
Layouts Adjusted for
Marketing Purposes.

Riser Enlarged as per M&E
Requirements. Glass Box Size
Increased due to Structural
Requirements.

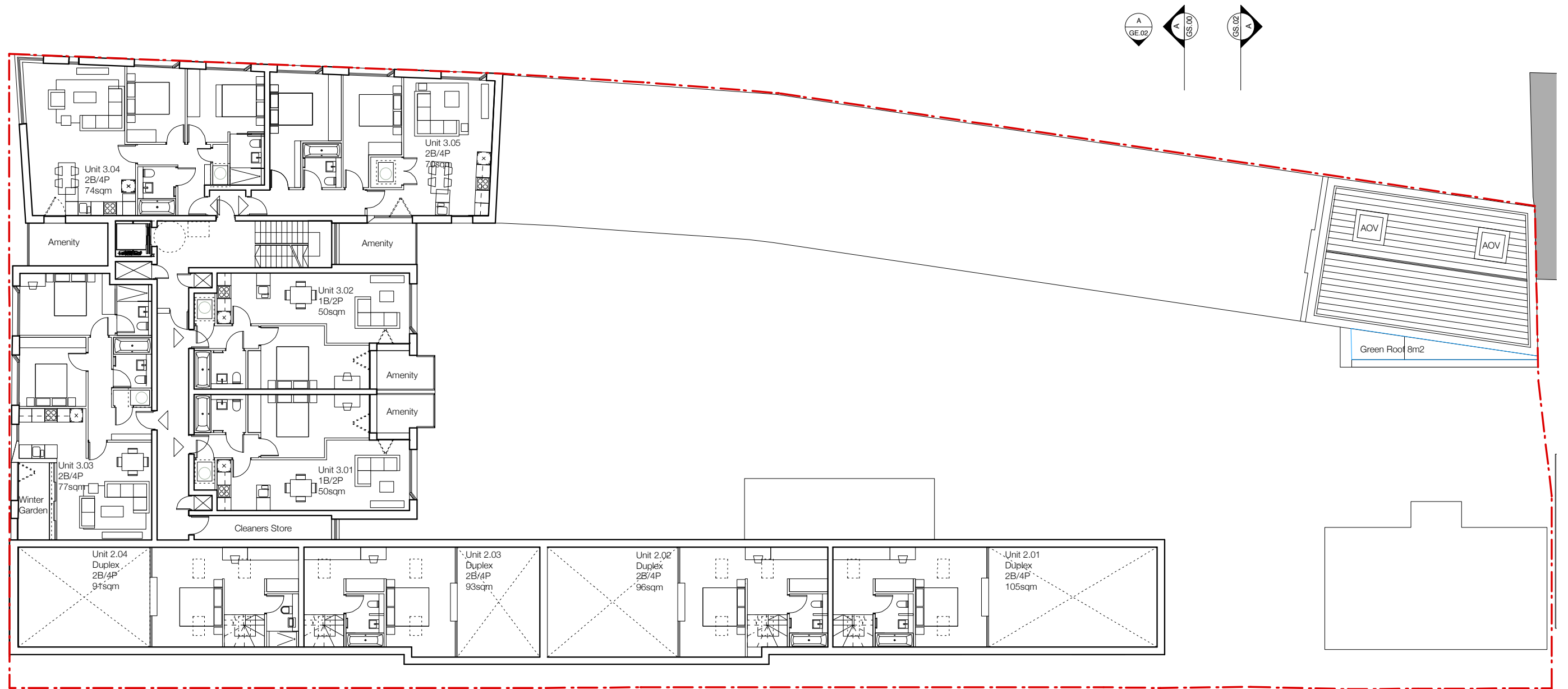
Plant Room Added
as per M&E Requirements

Block D Interior
Layouts Adjusted for
Marketing Purposes.

House
For application please refer to:
2016/7089/P

PROPOSED SECOND FLOOR PLAN 173_GA_PL5_02 REV *





APPROVED THIRD FLOOR PLAN 173_GA_03 REV F (CONSENTED VIA 2016/5890/P)

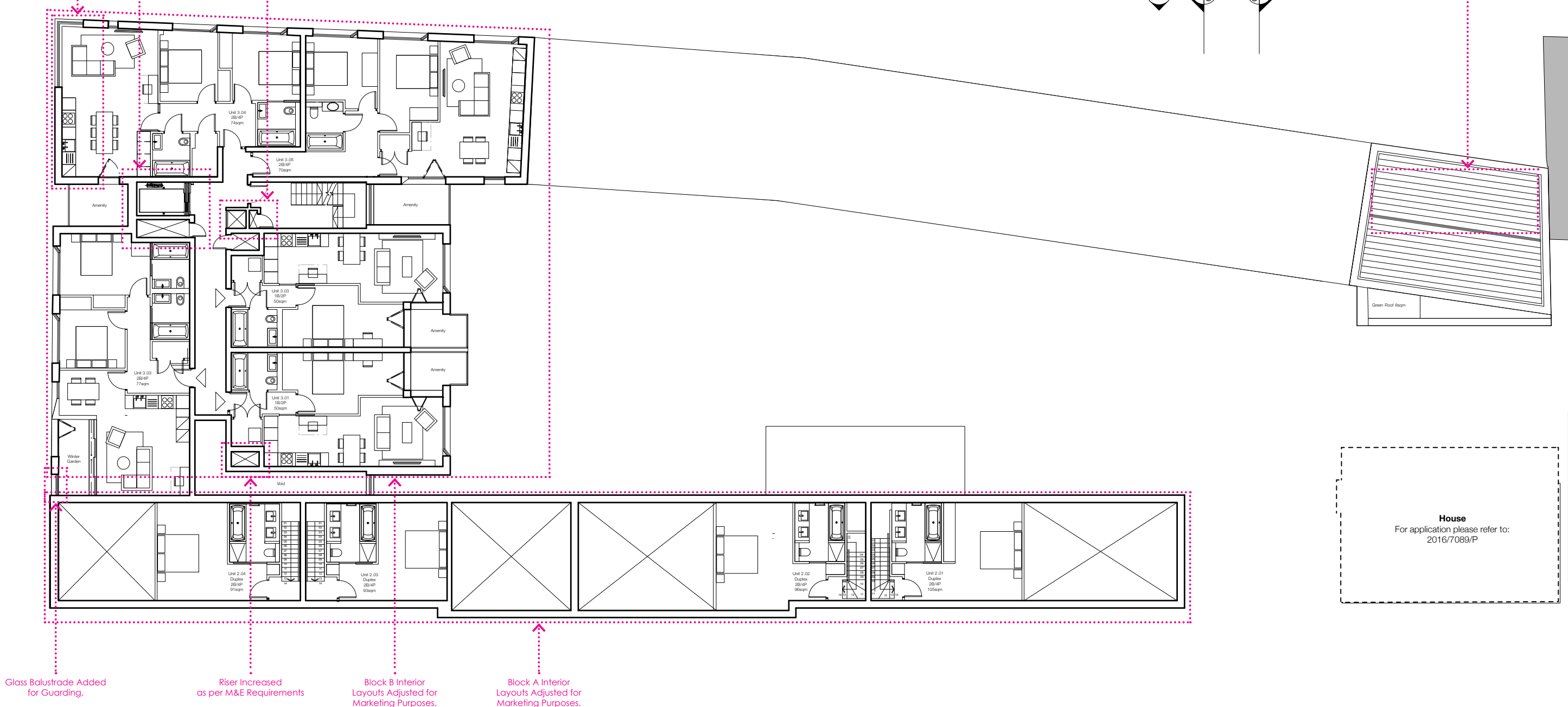
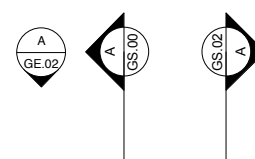
2.5 THIRD FLOOR PLAN

Building Facade Angle
Adjusted for Buildability whilst
Retaining the Architectural
Language.

Risers Enlarged as per Plant
Requirements

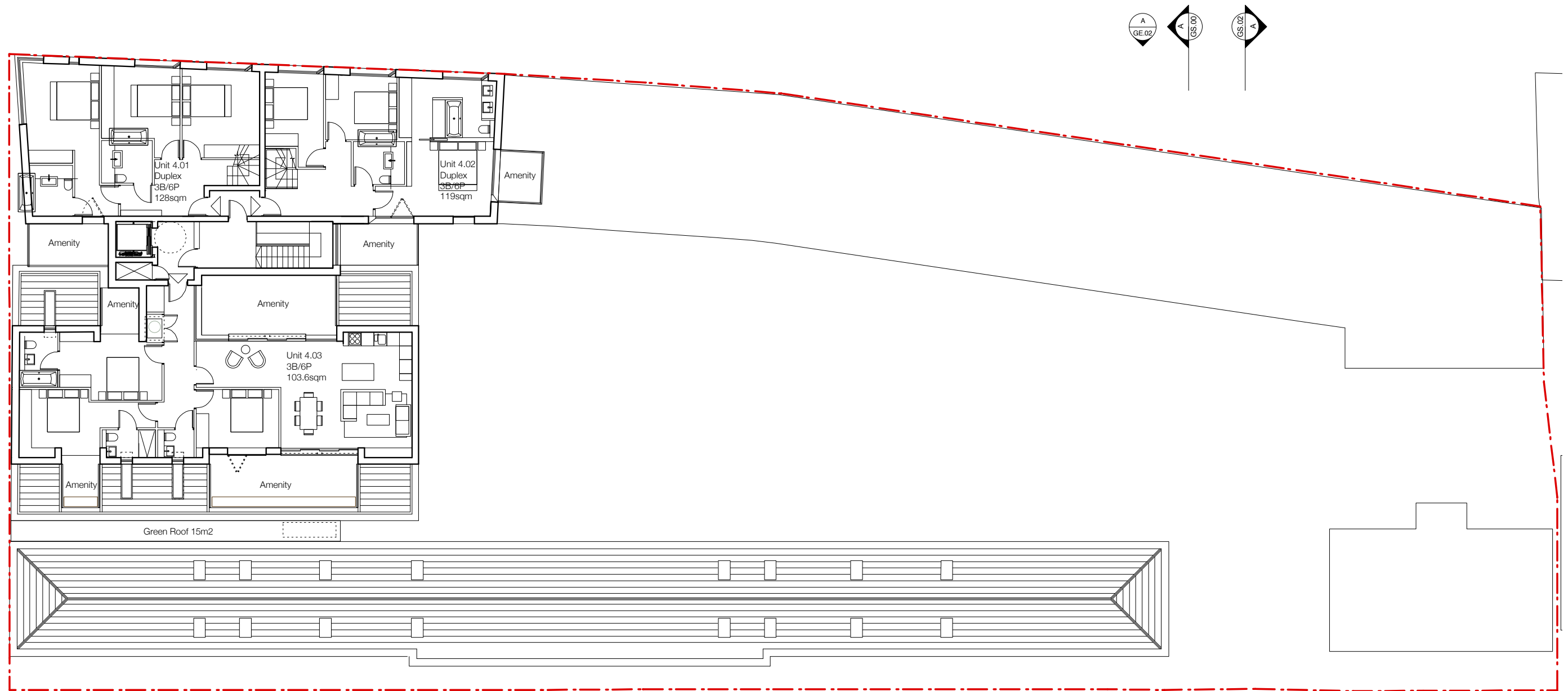
Risers Added as per Plant
Requirements

AOV Removed Following Review



PROPOSED THIRD FLOOR PLAN 173_PL5_GA_03 REV *





APPROVED FOURTH FLOOR PLAN 173_GA_04 REV G (CONSENTED VIA 2016/5890/P)

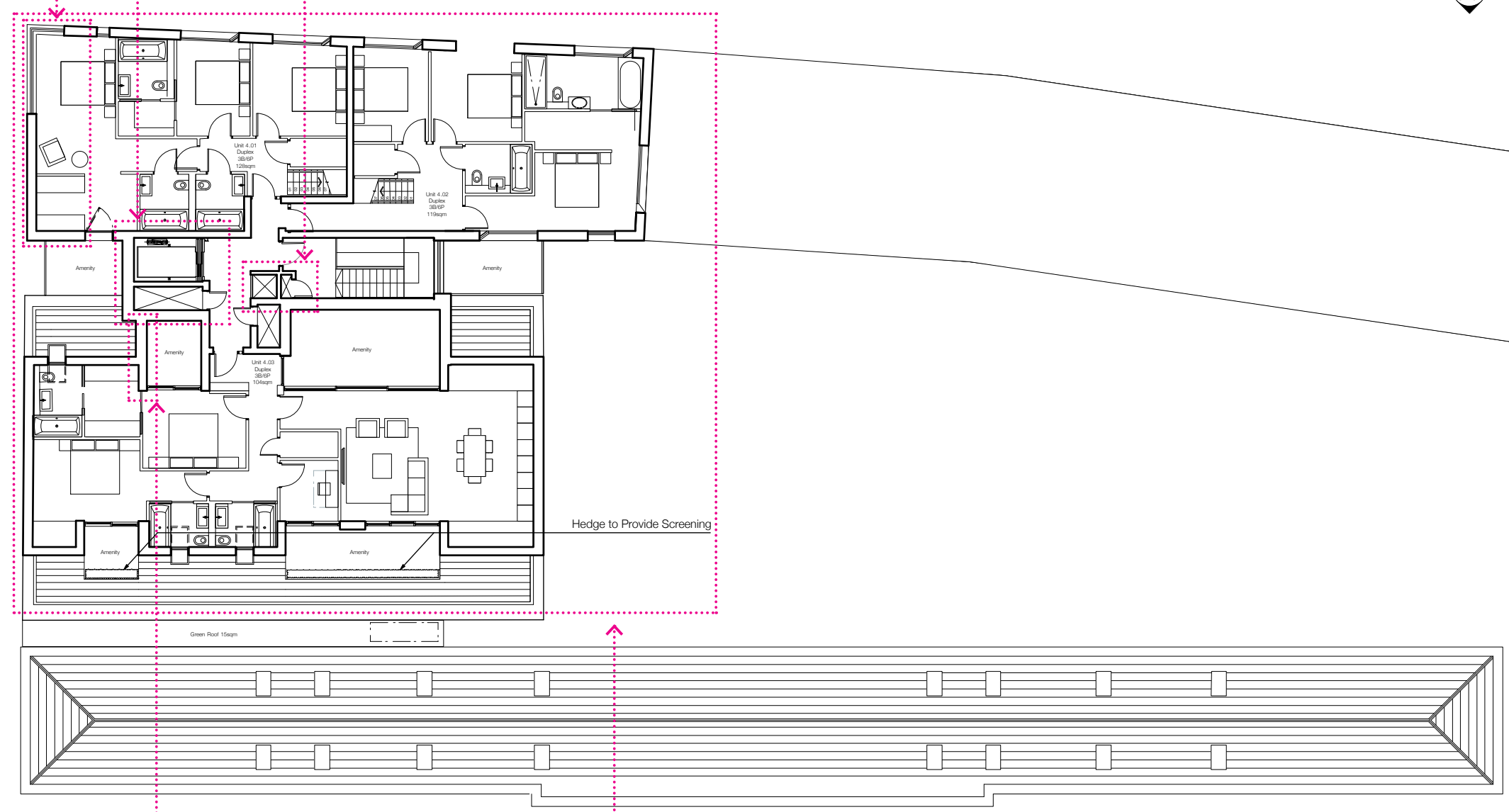
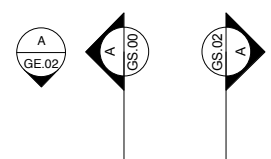


2.6 FOURTH FLOOR PLAN

Building Facade Angle
Adjusted for Buildability whilst
Retaining the Architectural
Language.

Risers Enlarged as per Plant
Requirements

Risers Added as per
Plant Requirements



Hedge to Provide Screening

Green Roof 15sqm

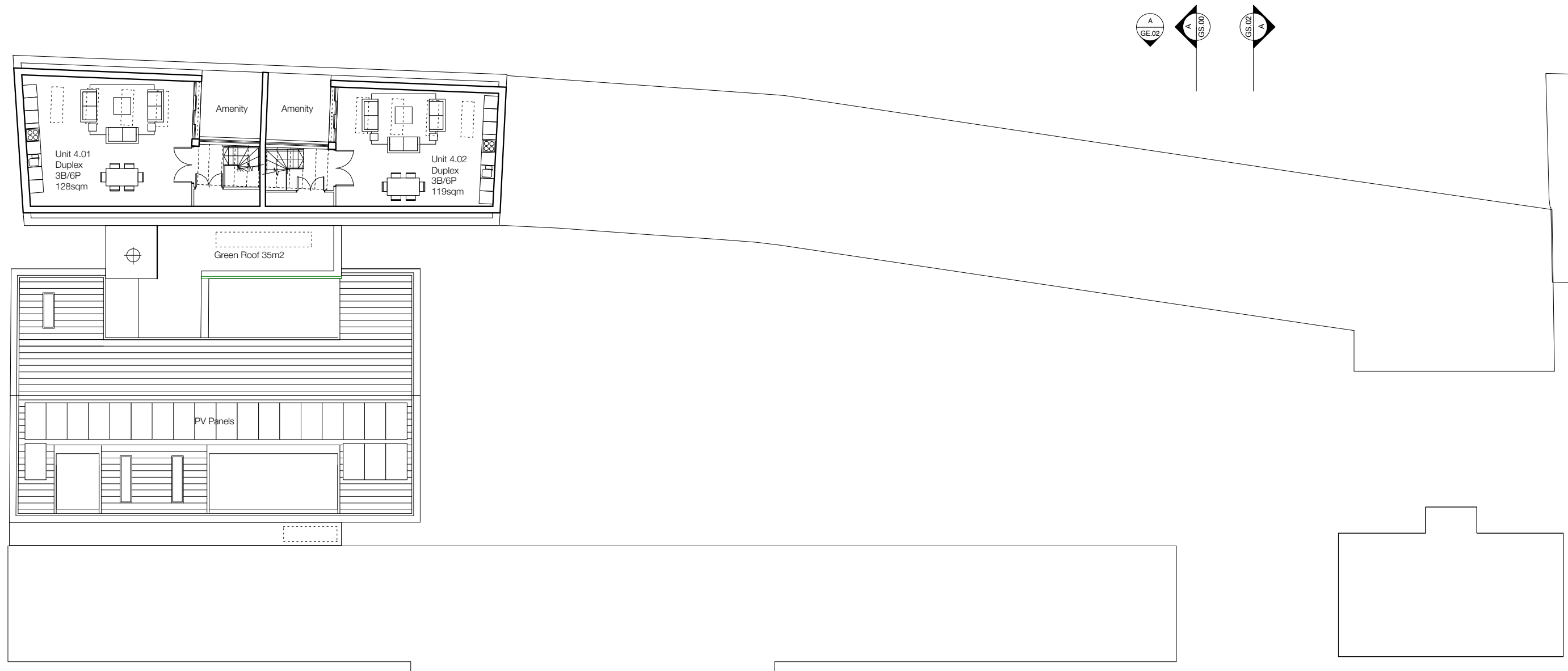
House
For application please refer to:
2016/7089/P

Adjusted from Glazed to
Solid Wall Construction for
Buildability.

Block B Interior
Layouts Adjusted for
Marketing Purposes.

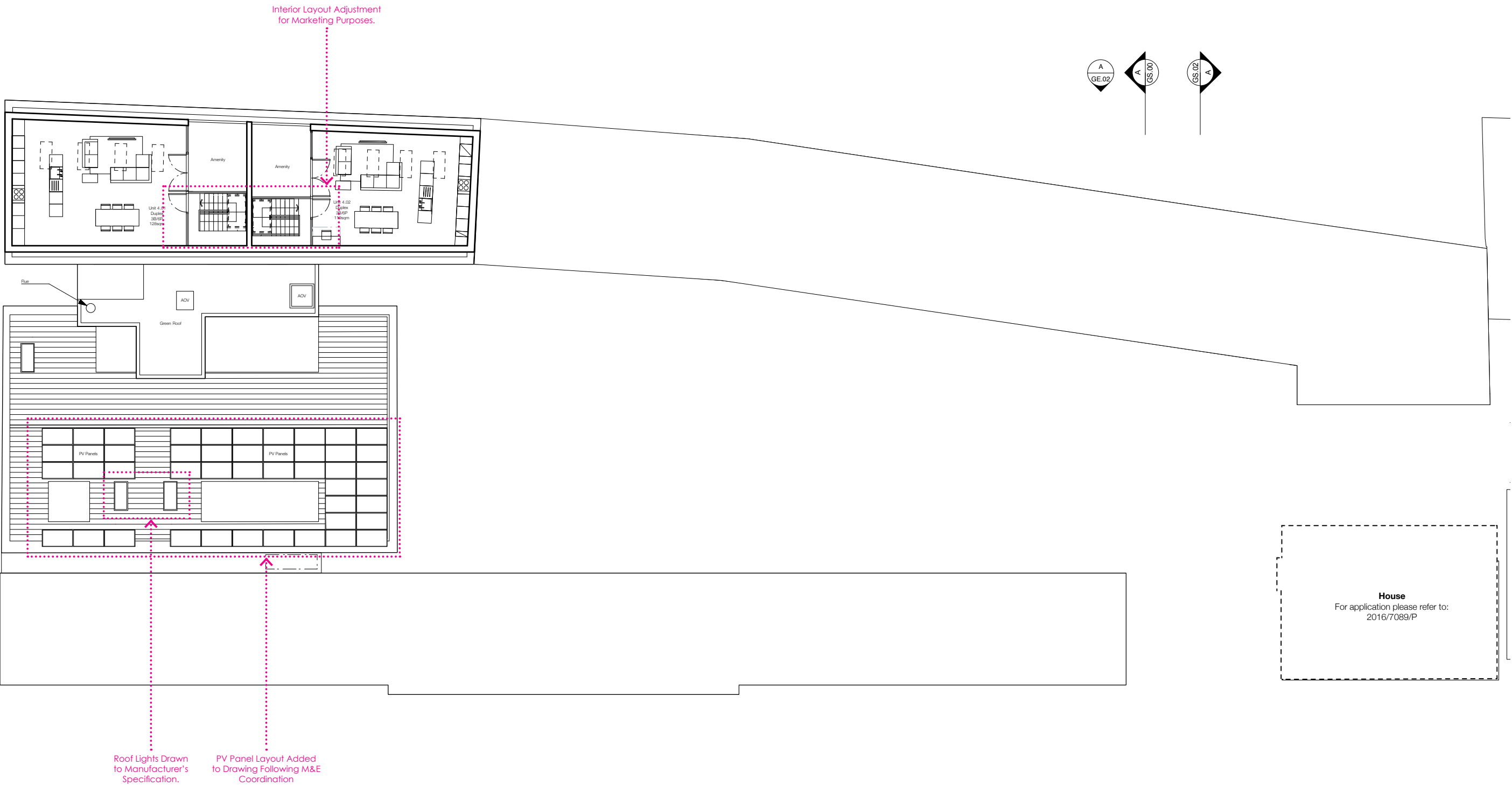
PROPOSED FOURTH FLOOR PLAN 173_PL5_GA_04 REV *





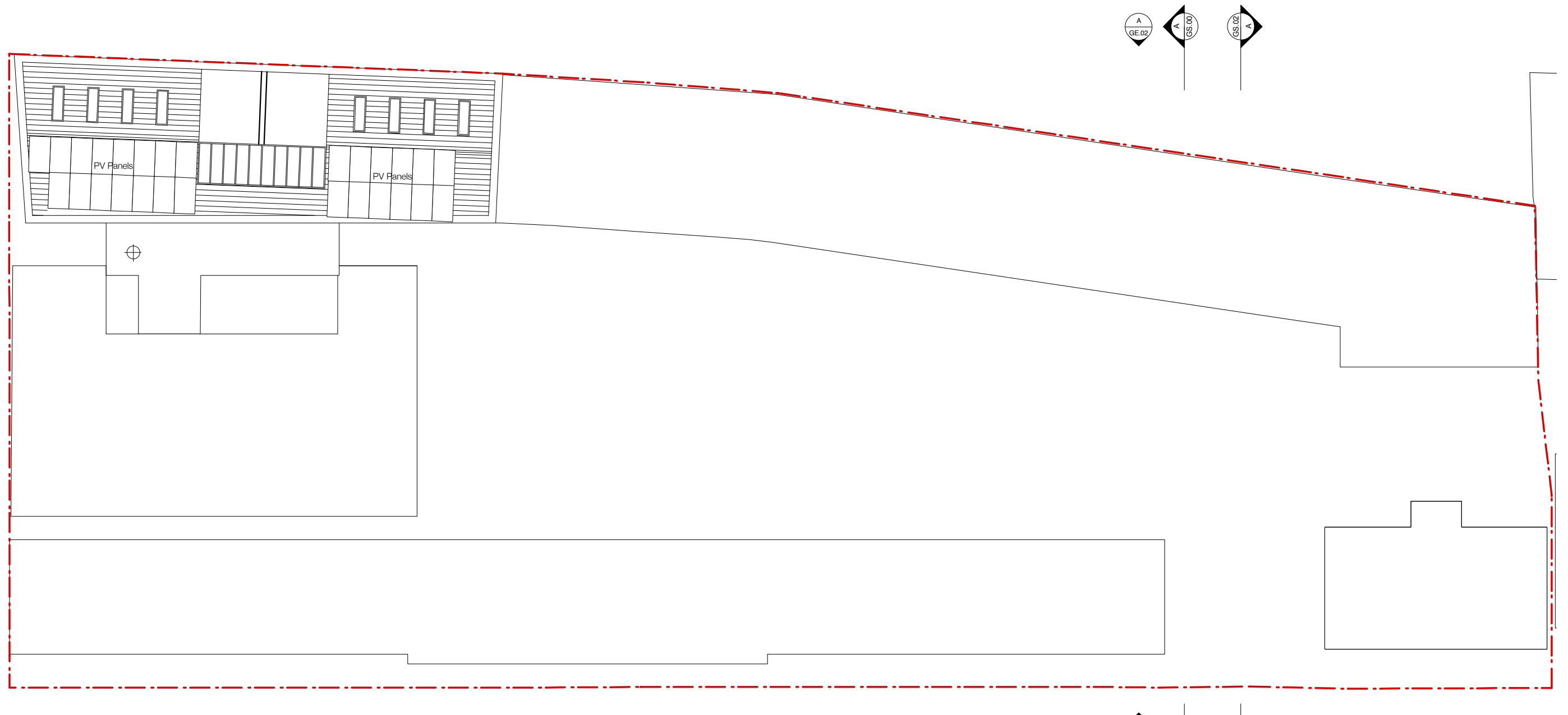
APPROVED FIFTH FLOOR PLAN 173_GA_05 REV F (CONSENTED VIA 2016/5890/P)

2.7 FIFTH FLOOR PLAN



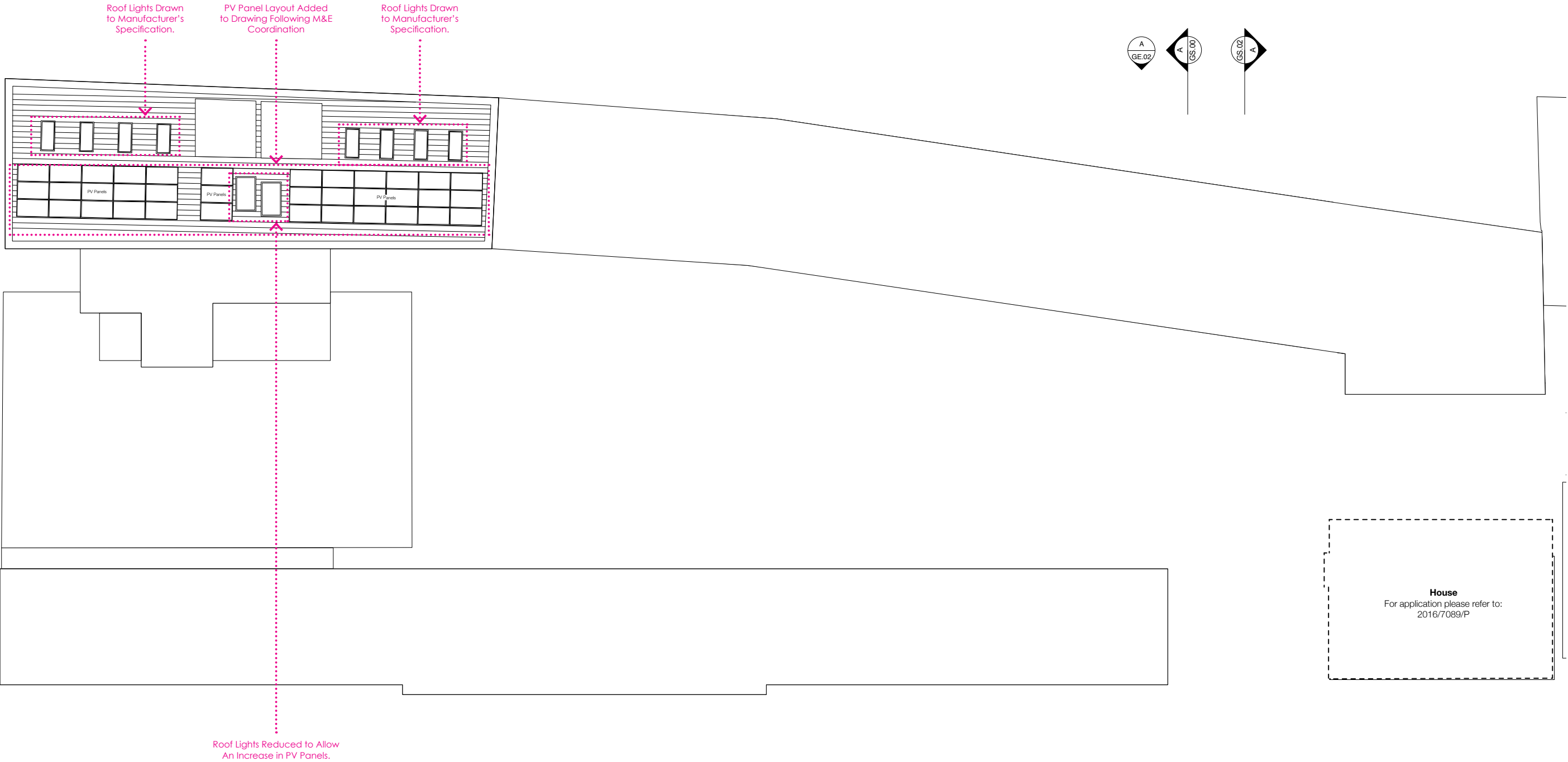
PROPOSED FIFTH FLOOR PLAN 173_PL5_GA_05 REV *





APPROVED ROOF PLAN 173_GA_ROOF REV D (CONSENTED VIA 2016/5890/P)

2.8 ROOF PLAN



PROPOSED ROOF PLAN 173_PL5_GA_ROOF REV *

