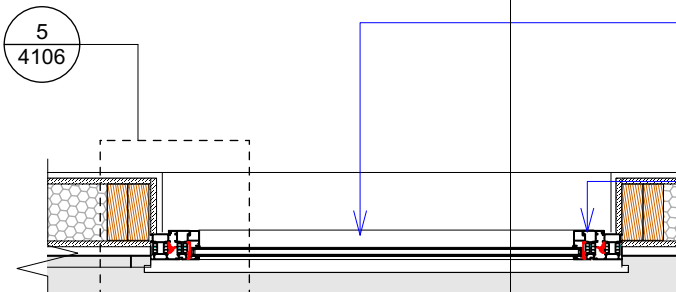


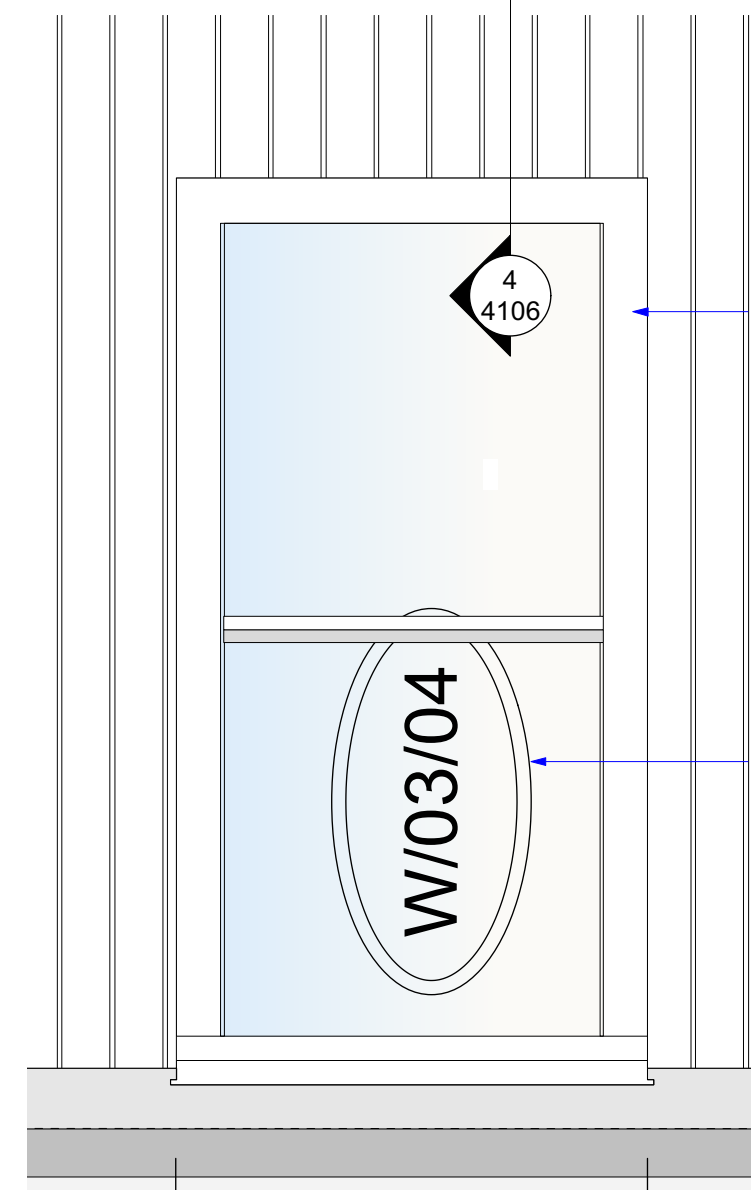
1 Elevation  
4106 1:20

W.03.04



2 Plan  
4106 1:20

W.03.04



3 Roof Plan  
4106 1:20

W.03.04

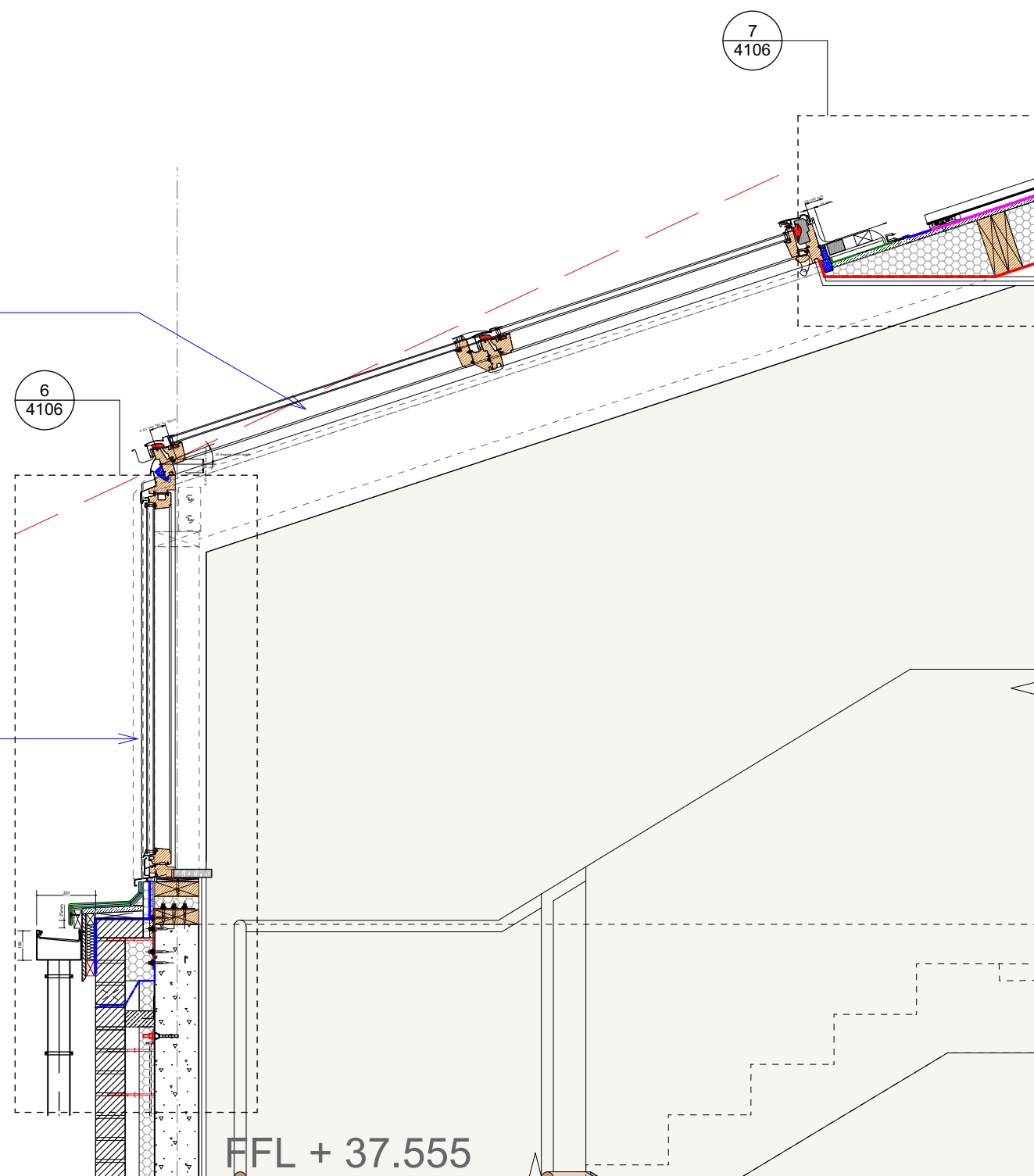
Velux Sloping / Vertical window. Frame to be powder-coated RAL 7011. Refer to NBS L10-480A and specialist NBS. Integrated blackout blinds.

Laminated safety and security glass. Windows to achieve minimum 1.4W/m2/K U value; 0.4G value; 0.71 visible light factor TBC. Refer to NBS Clause L40 - 655. Safety/Security/BombFilm 200 Micron Clear WFC-CSS200 by The Window Company or similar. Integrated blackout blinds.

Laminated safety and security glass. Windows to achieve minimum 1.4W/m2/K U value; 0.4G value; 0.71 visible light factor TBC. Refer to NBS Clause L40 - 655. Safety/Security/BombFilm 200 Micron Clear WFC-CSS200 by The Window Company or similar. Integrated blackout blinds.

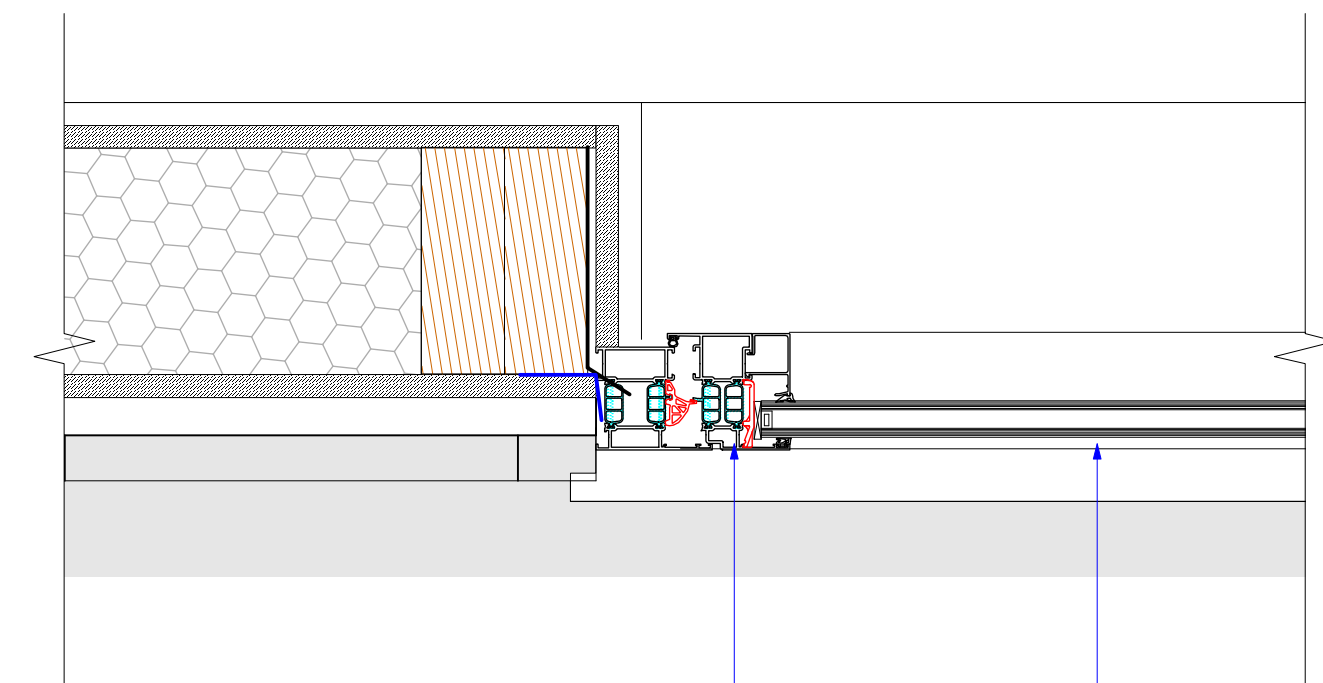
Velux Sloping / Vertical window. Frame to be powder-coated RAL 7011. Refer to NBS L10-480A and specialist NBS. Integrated blackout blinds.

OV



4 Section  
4106 1:20

W.03.04

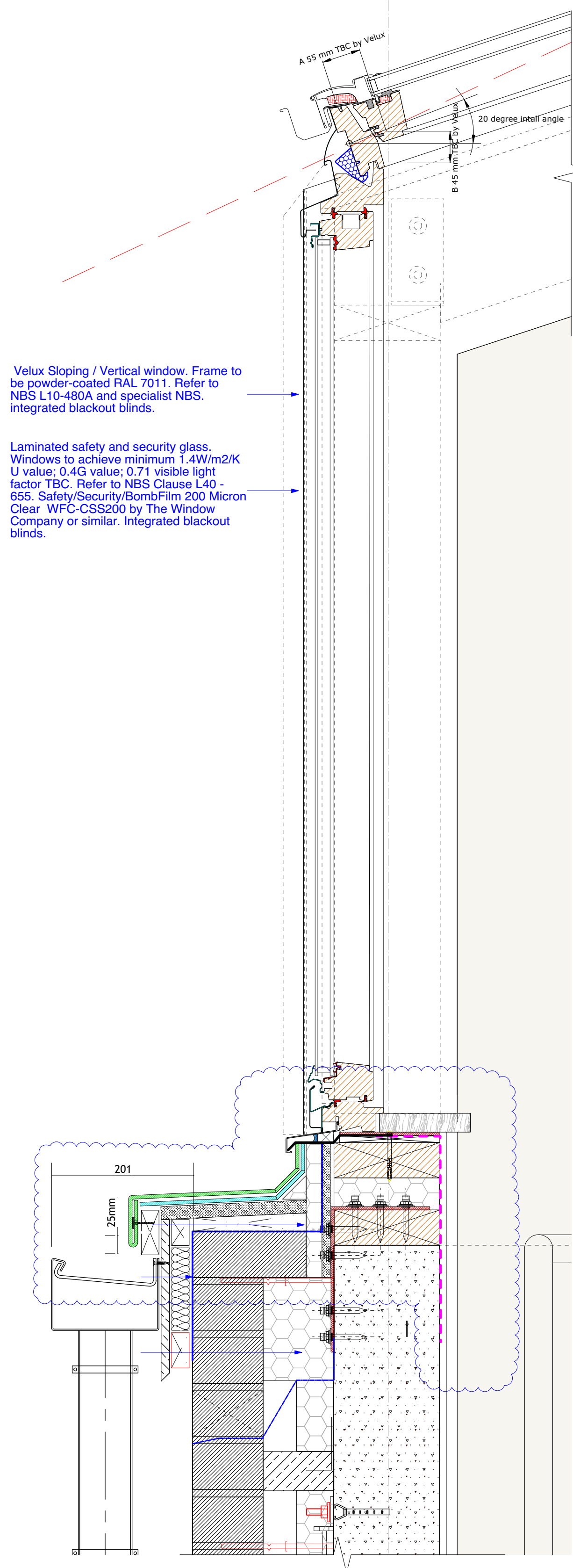


5 Plan Detail  
4106 1:5

W.03.04

Velux Sloping / Vertical window. Frame to be powder-coated RAL 7011. Refer to NBS L10-480A and specialist NBS. Integrated blackout blinds.

Laminated safety and security glass. Windows to achieve minimum 1.4W/m2/K U value; 0.4G value; 0.71 visible light factor TBC. Refer to NBS Clause L40 - 655. Safety/Security/BombFilm 200 Micron Clear WFC-CSS200 by The Window Company or similar. Integrated blackout blinds.

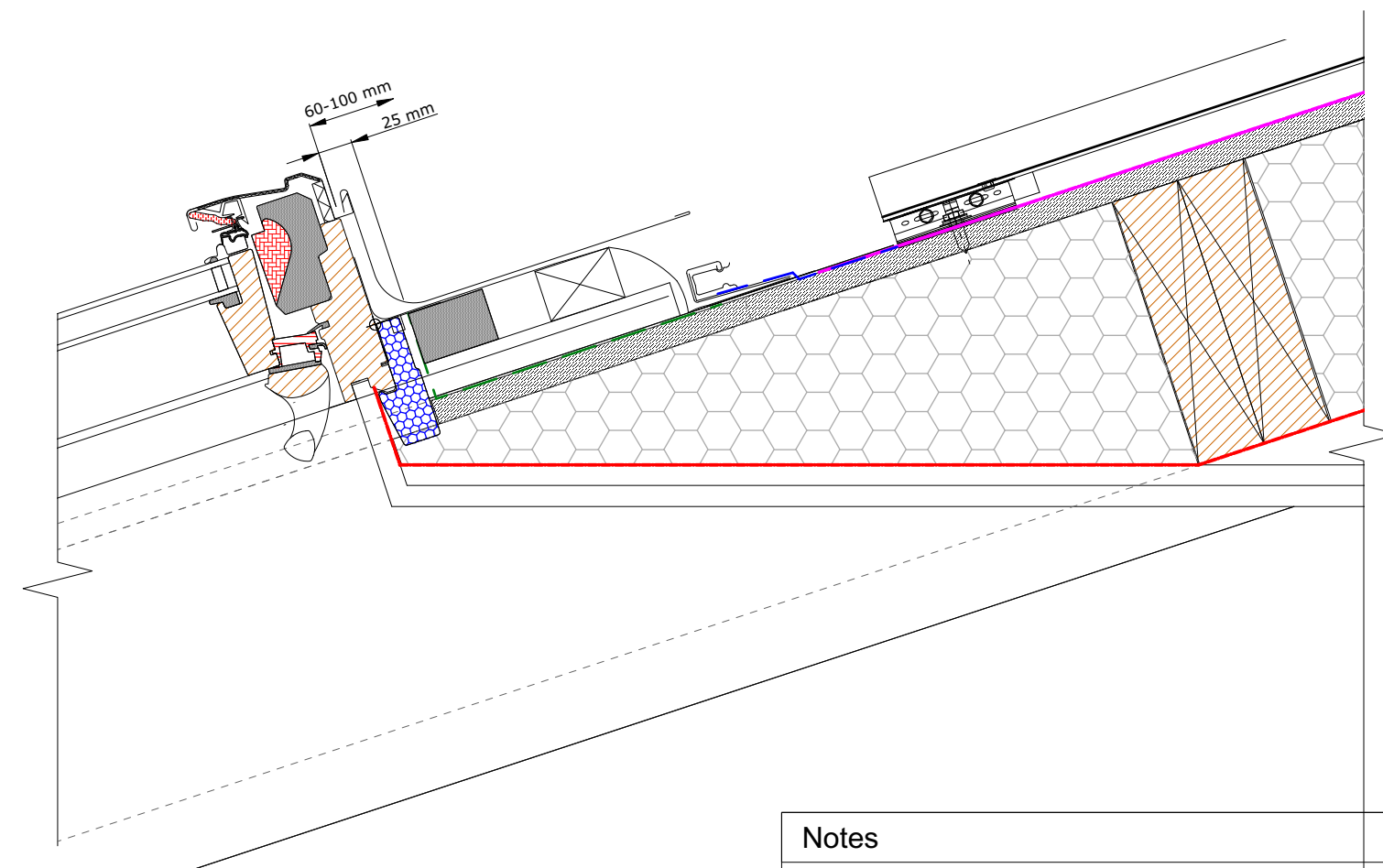


6 Section Detail  
4106 1:5

W.03.04

Velux Sloping / Vertical window. Frame to be powder-coated RAL 7011. Refer to NBS L10-480A and specialist NBS. Integrated blackout blinds.

Laminated safety and security glass. Windows to achieve minimum 1.4W/m2/K U value; 0.4G value; 0.71 visible light factor TBC. Refer to NBS Clause L40 - 655. Safety/Security/BombFilm 200 Micron Clear WFC-CSS200 by The Window Company or similar. Integrated blackout blinds.



7 Section Detail  
4106 1:5

W.03.04

#### Notes

All dimensions are approximate. Dimensions should be checked on site prior to commencement of production drawings and construction works.

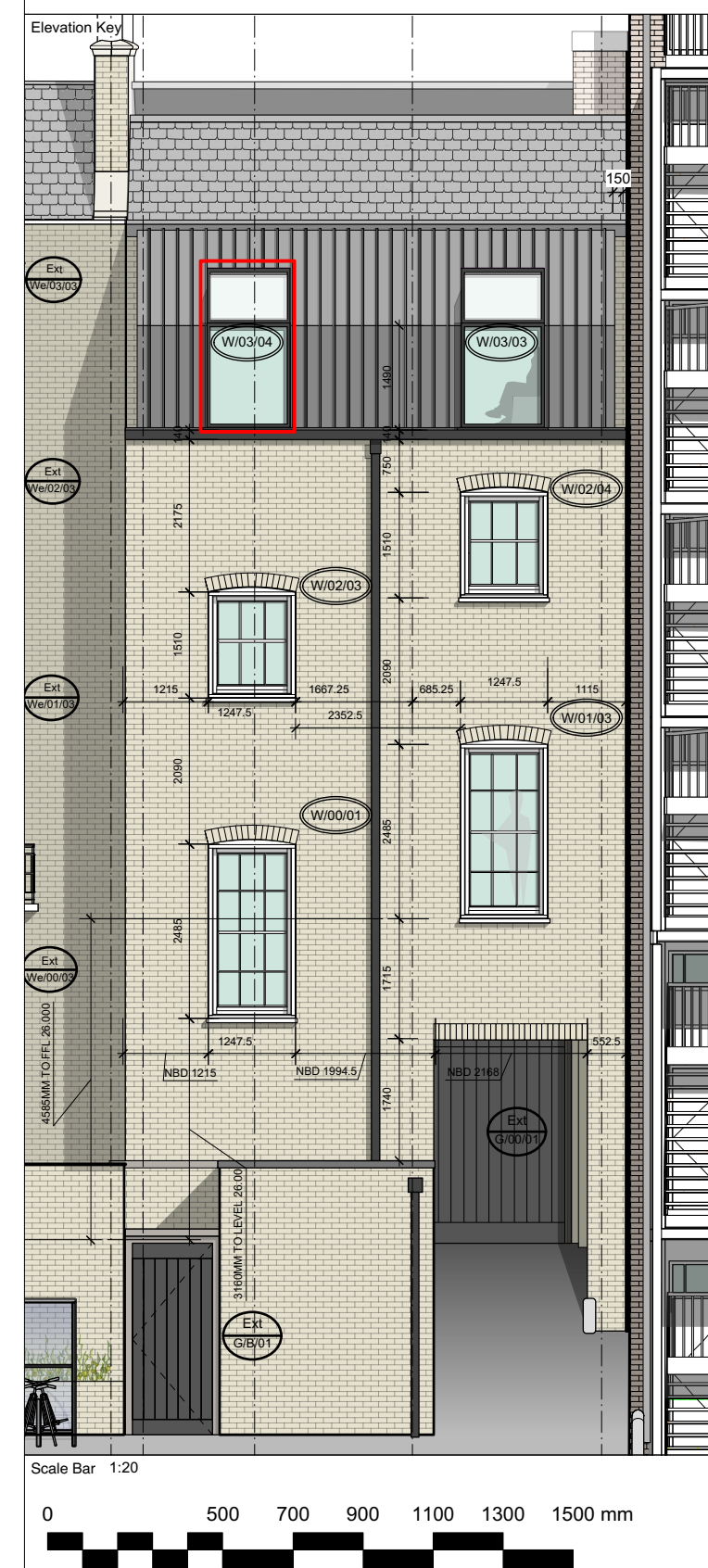
All works to be carried out in accordance with the BREEAM requirements.

To be read in conjunction with Drawing Series 3110, 3120, 3130, 3140.

Please refer to Approved Document ADK & ADN & BS 6206; 1981.

All new external work shall be carried out in materials that resemble, as closely as possible, in colour and texture those of the existing building, unless otherwise specified in the approved application. All facing materials, should be traditional materials matching the adjacent existing materials of the historic terrace, finished in colours to match. In accordance with the Listed Building Consent and Planning Permission. Existing windows shown indicatively TBC on site.

CONTRACTOR TO OBTAIN SAMPLES OF WINDOW FRAMES AND BRICK FOR LPA APPROVAL



Suitability	Revision	Date	Comments
D3	P1	08/06/18	Issue for information
D3	P2	28/08/18	Fall to roof upstand

A1

© copyright BISSET ADAMS

#### Notes

No dimensions are to be scaled from this drawing. The contractor / manufacturer is responsible for checking all dimensions and querying any discrepancies.

This drawing is the property of Bisset Adams Ltd.

Copyright is reserved by Bisset Adams Ltd. and the drawing is issued on condition that it is not copied, reproduced, retained or disclosed to any unauthorised person, either wholly or in part, without written consent.

Do not scale  
All dimensions to be checked on site

Project  
CBCD Toddler Laboratory

Address  
32 Torrington Square  
Bloomsbury  
London  
WC1E7HX  
Birbeck University of London

#### Logo



#### Information Title

Rear Elevation Window Details

Date 08.06.18 Drawn RP Checked IJ Scale 1:20, 1:5

Project No. - Originator - Zone - Level - Type - Role - Number

BB029-BA-Z1-03-DR-A-4106

Suitability Revision

D3 - P2

The Cube Building, 17-21 Wenlock Road, London N1 7GT, United Kingdom  
T +44 (0)20 7250 0440 | E info@bissetadams.com | www.bissetadams.com

BISSET  
ADAMS