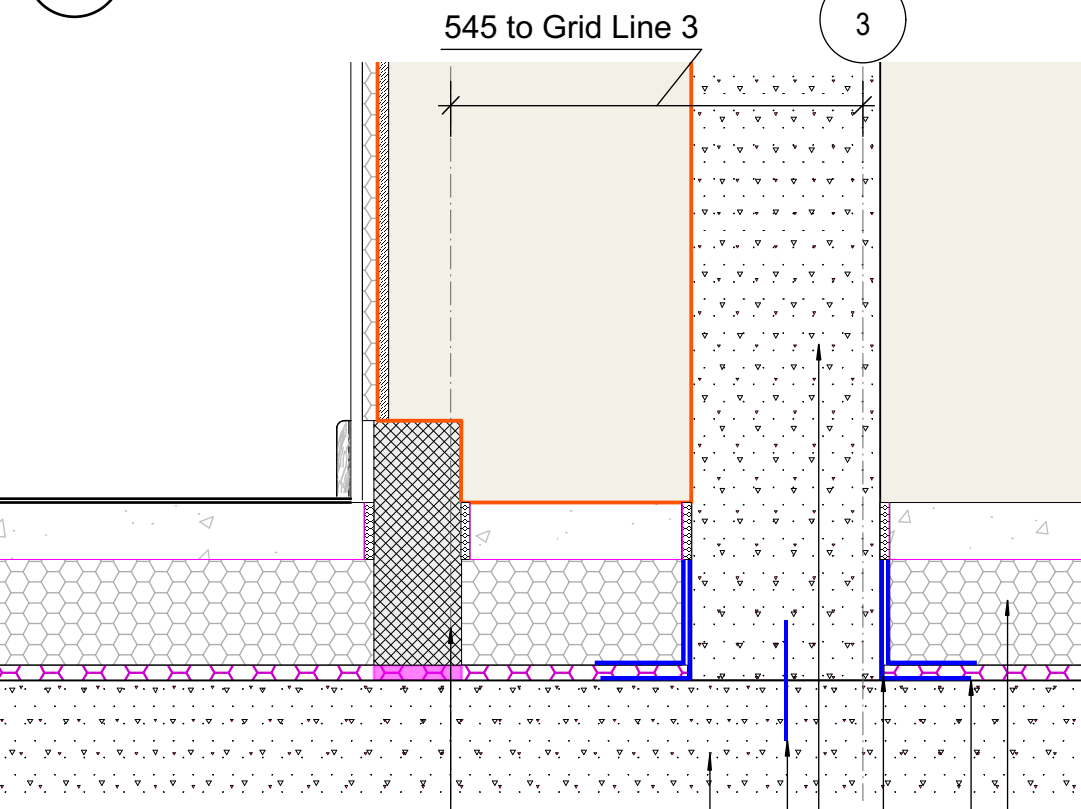


Key Sections EE FF
1.500



SD 24	Section Detail
3105	Scale: 1:10

1st course of block bedded onto 4:1 screed mix and left for 24 hours.

250mm reinforced in-situ concrete wall to struct eng spec to support existing no.32 end of terrace.

PVC based watertop to specialist spec

200mm water tight concrete to struct eng spec

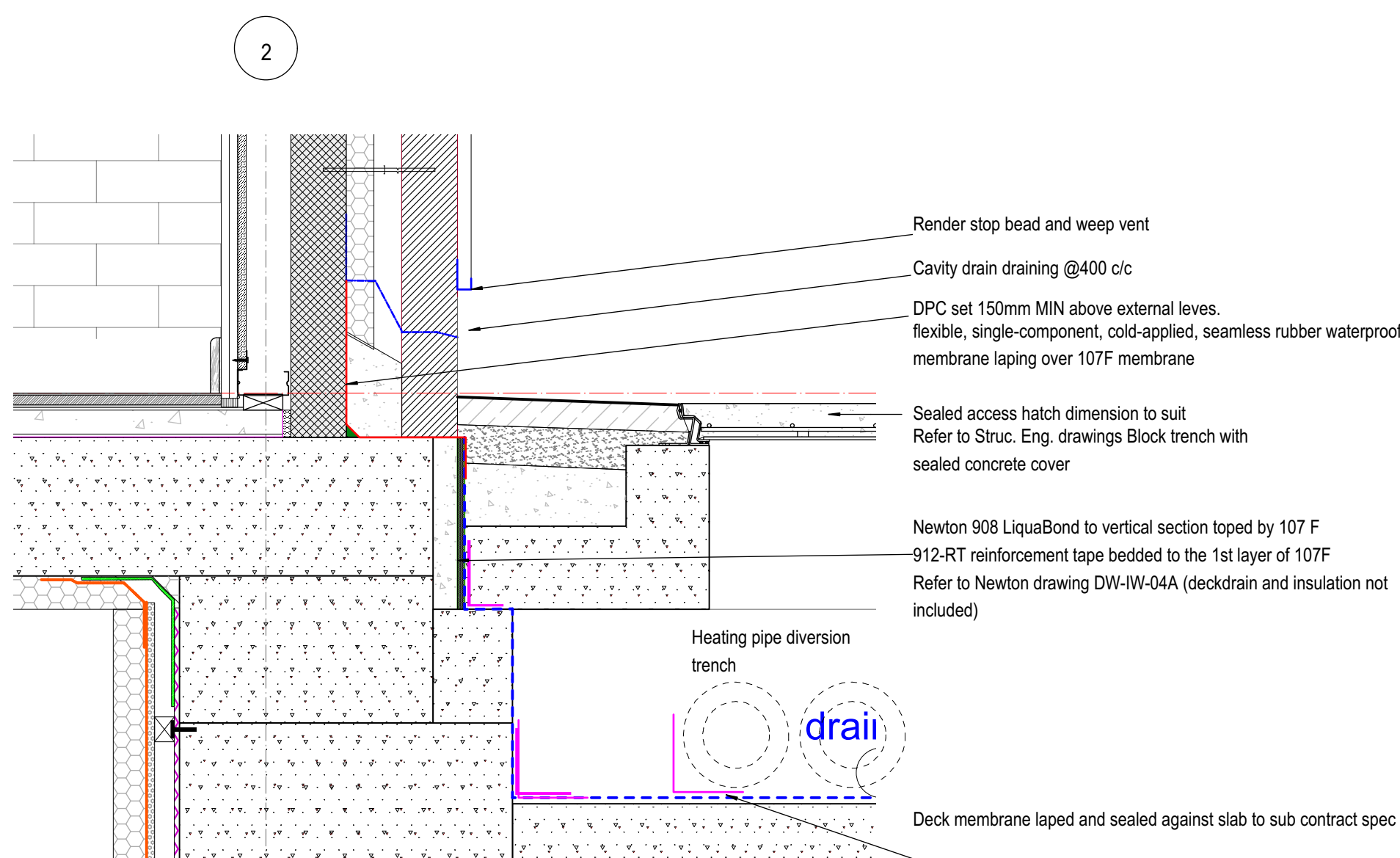
CD tape

Newton 520 eco floor membrane to specialist spec.

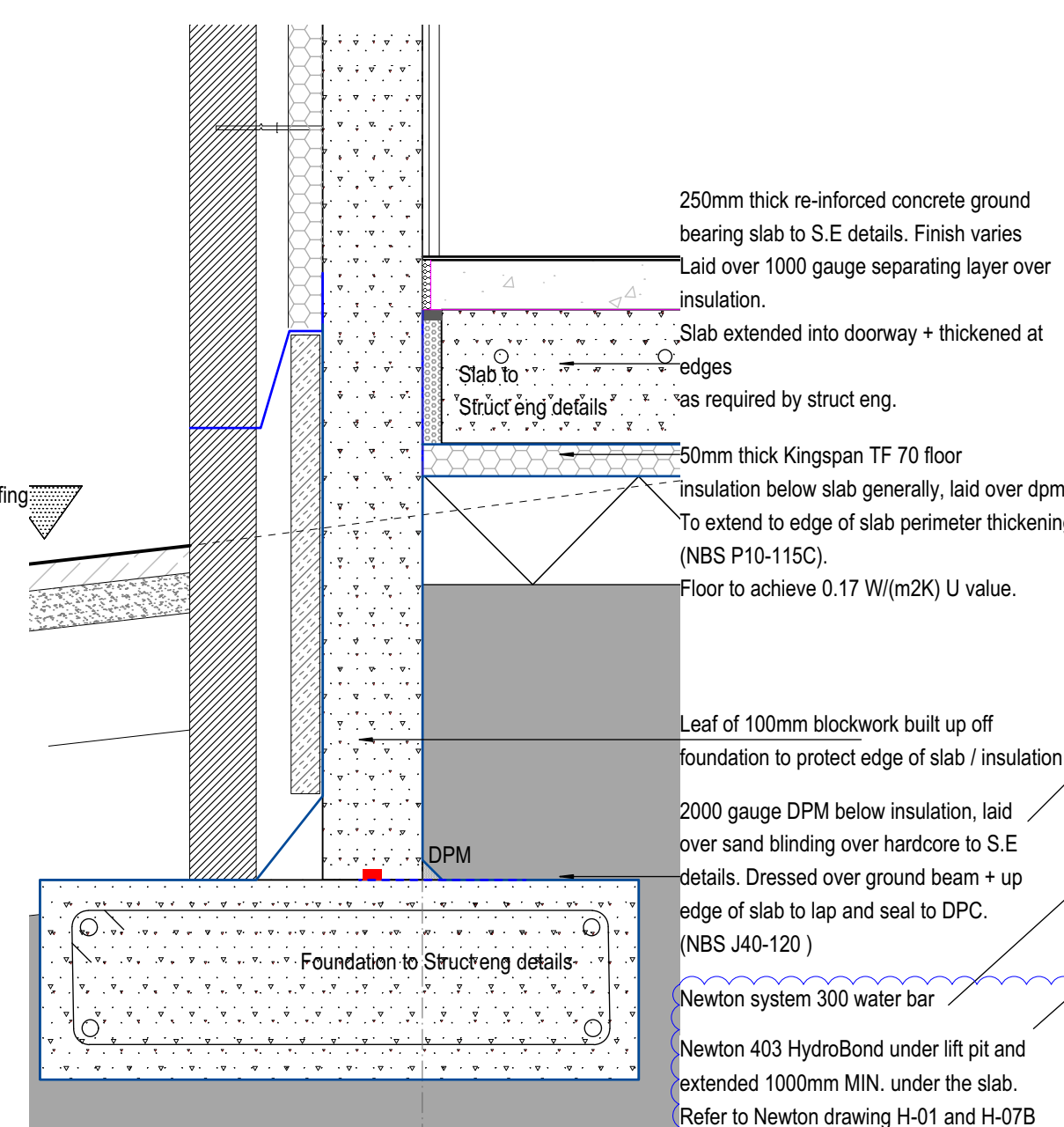
140mm thick Kingspan TF 70 floor insulation below screed, over slab.

For to achieve 0.17 W/(m²K) U value. NBS P10-115

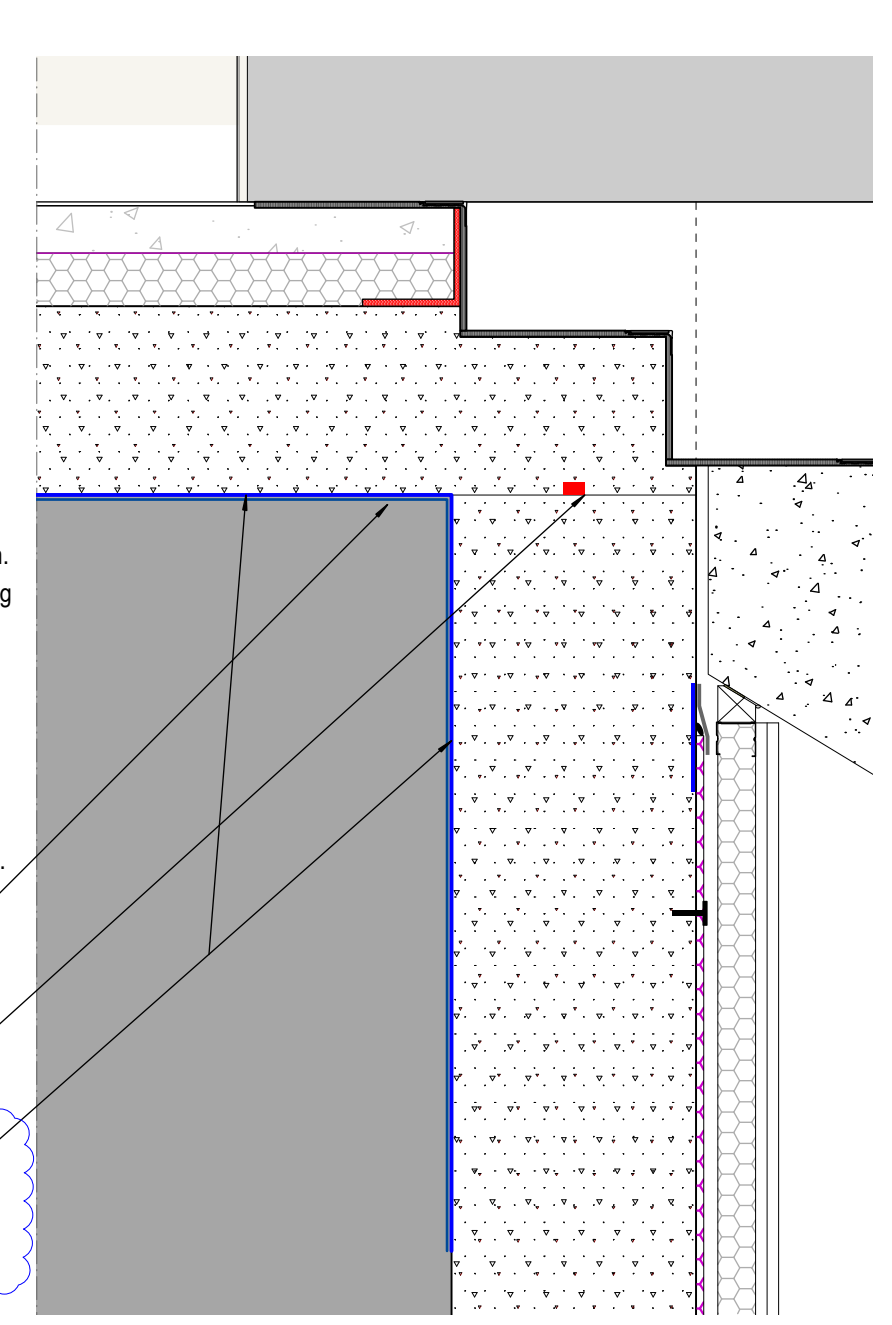
SD 21	Section Detail
3105	Scale: 1:10



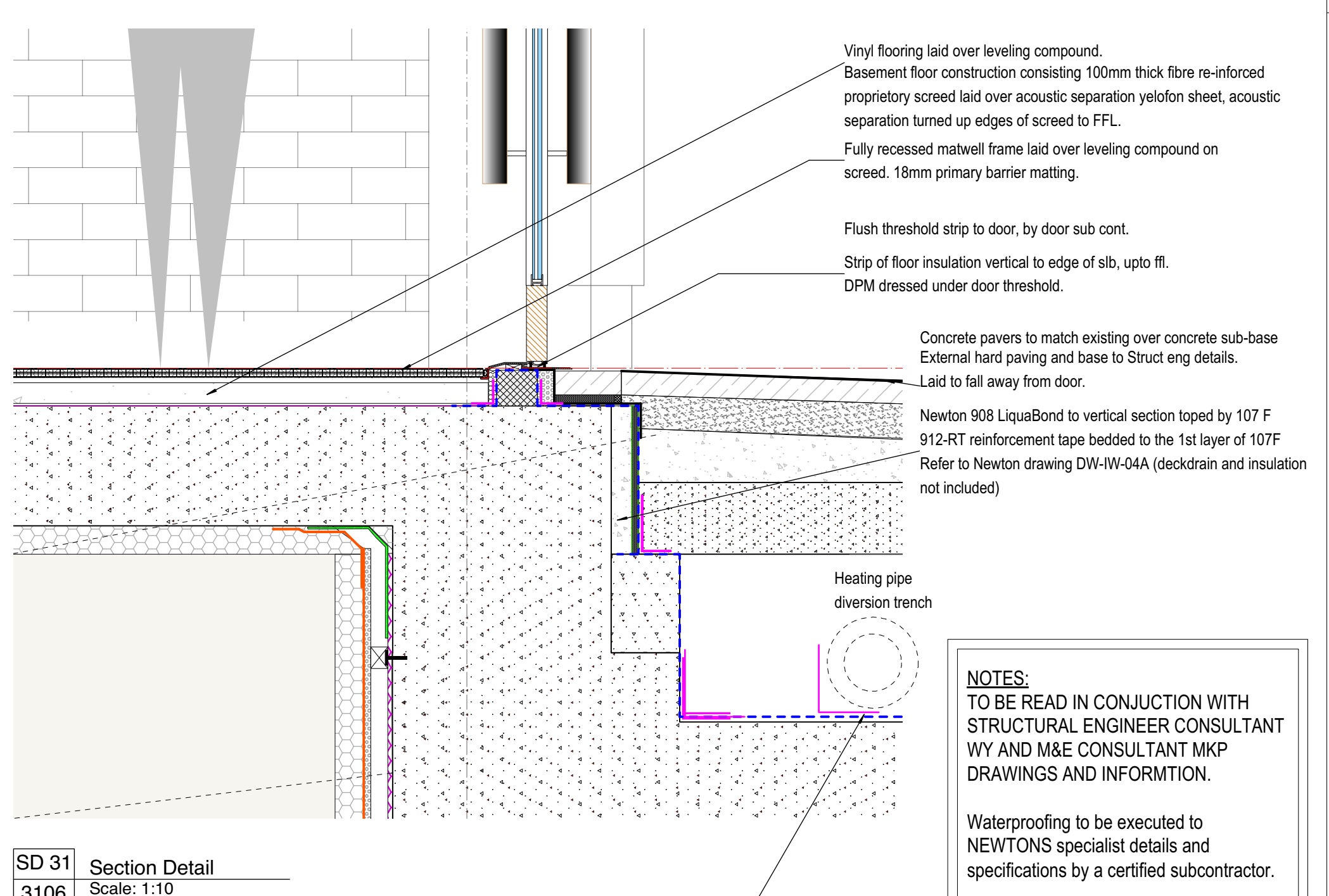
SD 26	Section Detail
3105	Scale: 1:10



SD 28	Section Detail
3106	Scale: 1:10



SD 29	Section Detail
3106	Scale: 1:10



SD 31	Section Detail
3106	Scale: 1:10

NOTES:
TO BE READ IN CONJUNCTION WITH
STRUCTURAL ENGINEER CONSULTANT
WY AND M&E CONSULTANT MKP
DRAWINGS AND INFORMTION.

Waterproofing to be executed to
NEWTONS specialist details and
specifications by a certified subcontractor.

Please refer to specialist details and
sepefications for water bar and membrane
joints details and services penetration
waterproofing.

[illegible]

A1


© copyright BISSET ADAMS

Notes

No dimensions are to be scaled from this drawing. The contractor / manufacturer is responsible for checking all dimensions and querying any discrepancies.

This drawing is the property of Bisset Adams Ltd.

Copyright is reserved by Bisset Adams Ltd. and the drawing is issued on condition that it is not copied, reproduced, retained or disclosed to any unauthorised person, either wholly or in part, without written consent.

Project	CBCD Baby Laboratory	Logo
Key	32-33 Torrington Square Bloomsbury London WC1E7HX Birbeck University of London	 Birkbeck UNIVERSITY OF LONDON

Information Title									
Detail Sections - Waterproofing									
Date		Drawn		Checked		Scale			
23.07.18		RP		IJ		1:10			
Project No.	Originator	Zone	Level	Type	Role	Number	Suitability	Revision	
BB029	BA	Z1	XX	DR	A	3118	D3	P2	
The Cube Building, 17 -21 Wenlock Road, London N1 7GT, United Kingdom T +44 (0)20 7250 0440 E info@bissetadams.com www.bissetadams.com									