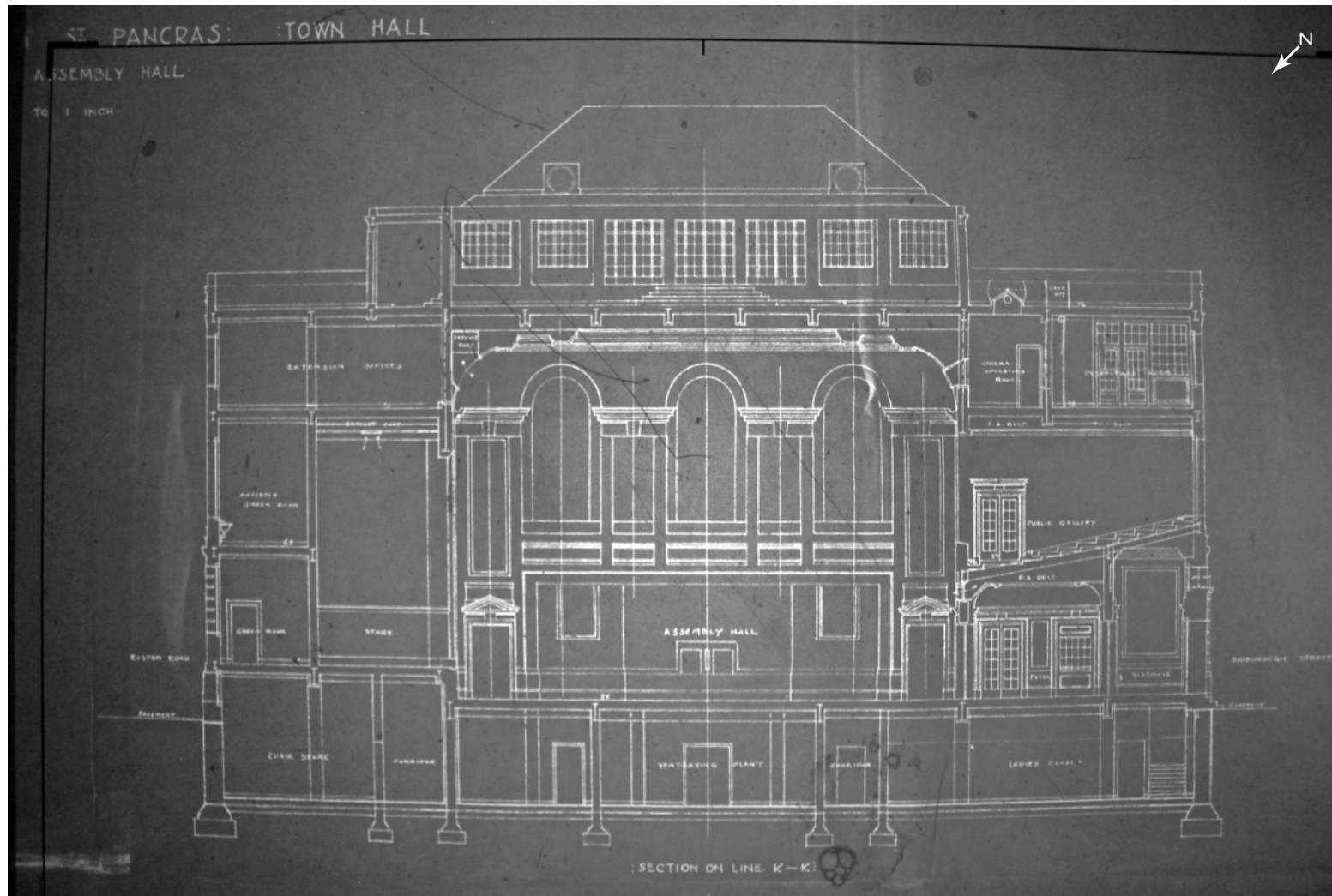
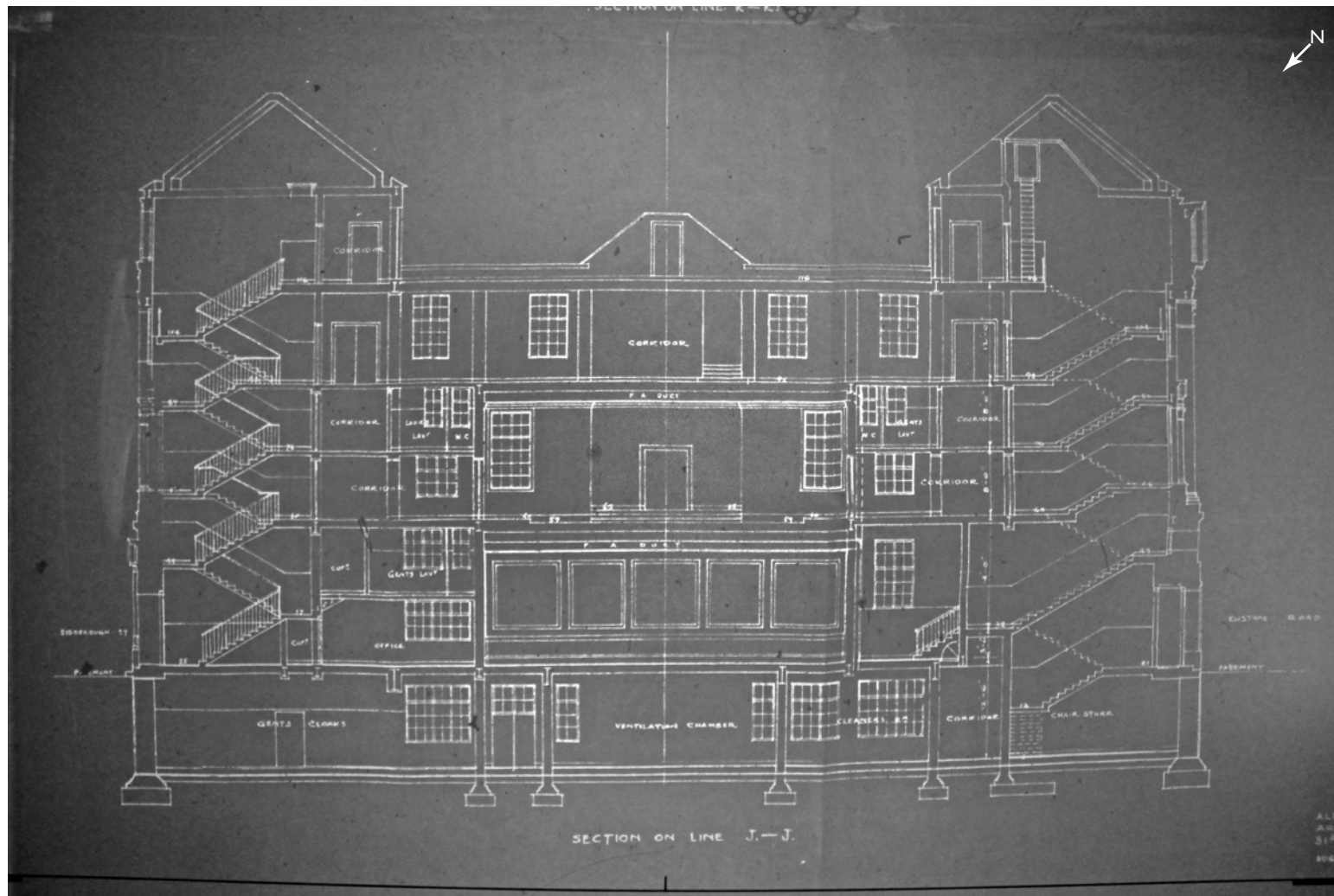


HISTORIC DEVELOPMENT



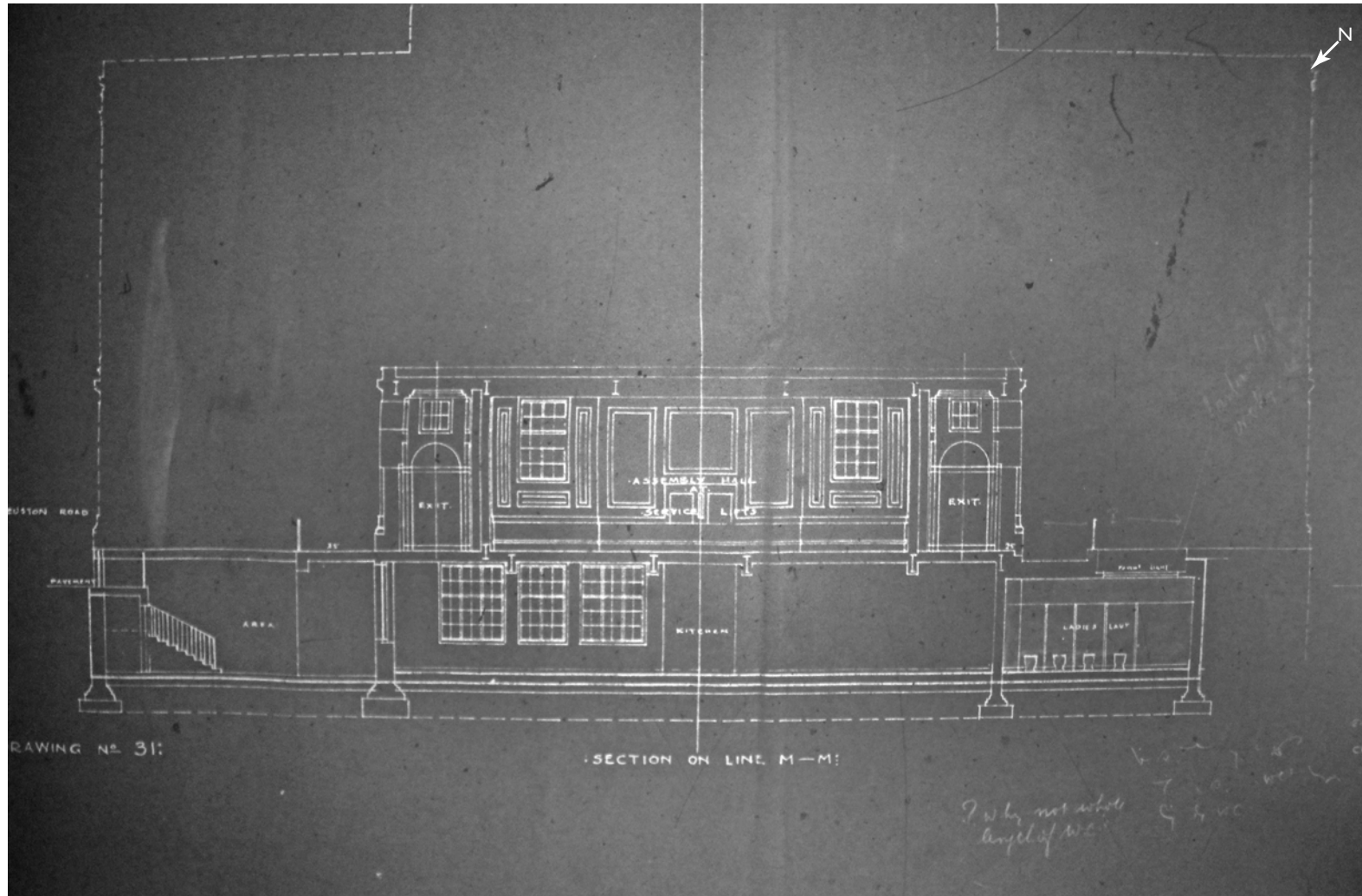
Section through the assembly hall looking east, August 1934 (© Camden Local Studies). This section also shows the volume of the Camden Centre, with raked seating on the southern gallery seen to the right hand side

HISTORIC DEVELOPMENT



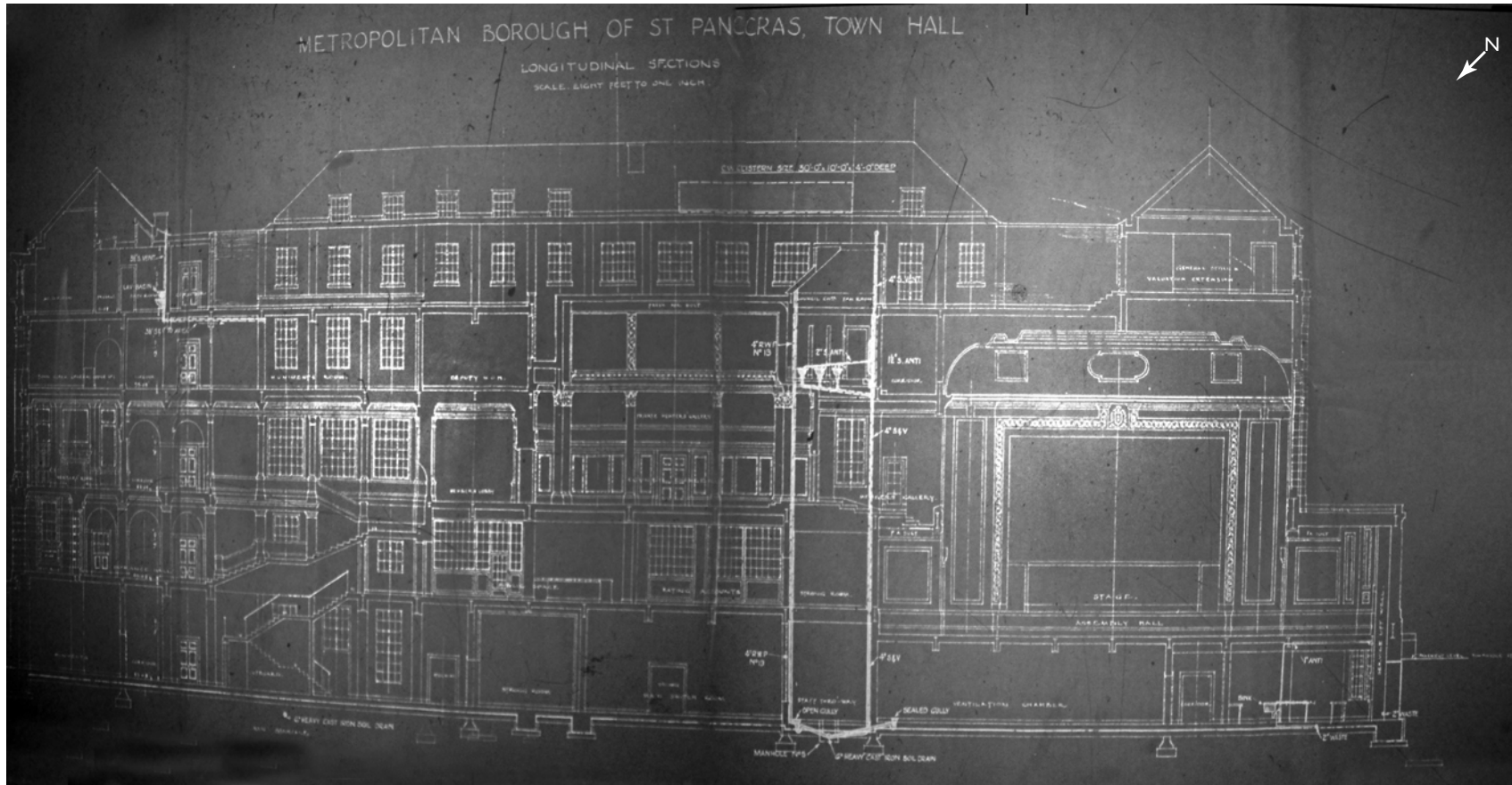
Section through the building looking west, August 1934 (© Camden Local Studies)

HISTORIC DEVELOPMENT



Partial section at assembly hall showing Basement toilets and kitchen, August 1934 (© Camden Local Studies)

HISTORIC DEVELOPMENT



Section through the building looking north, September 1934 (© Camden Local Studies). The volume of the Camden Centre can be seen to the right and to the left the Imperial staircase up to the First floor committee rooms and the Council Chamber (which is indicated by the columns in the centre of the drawing)

HISTORIC DEVELOPMENT



Section through the building looking south, September 1934 (© Camden Local Studies). The section is cut through the southern pair of lightwells with the fenestration of both visible in this drawing