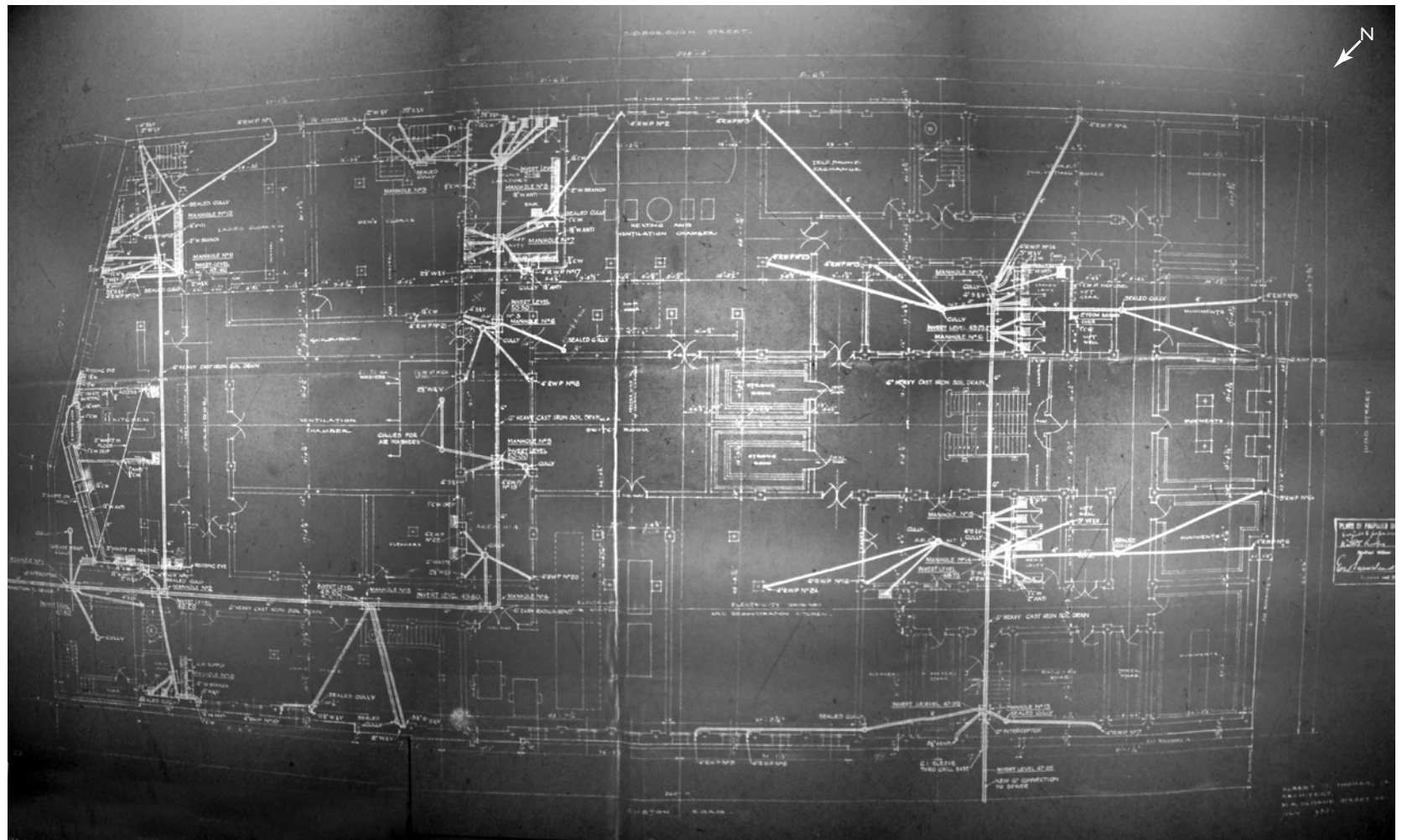


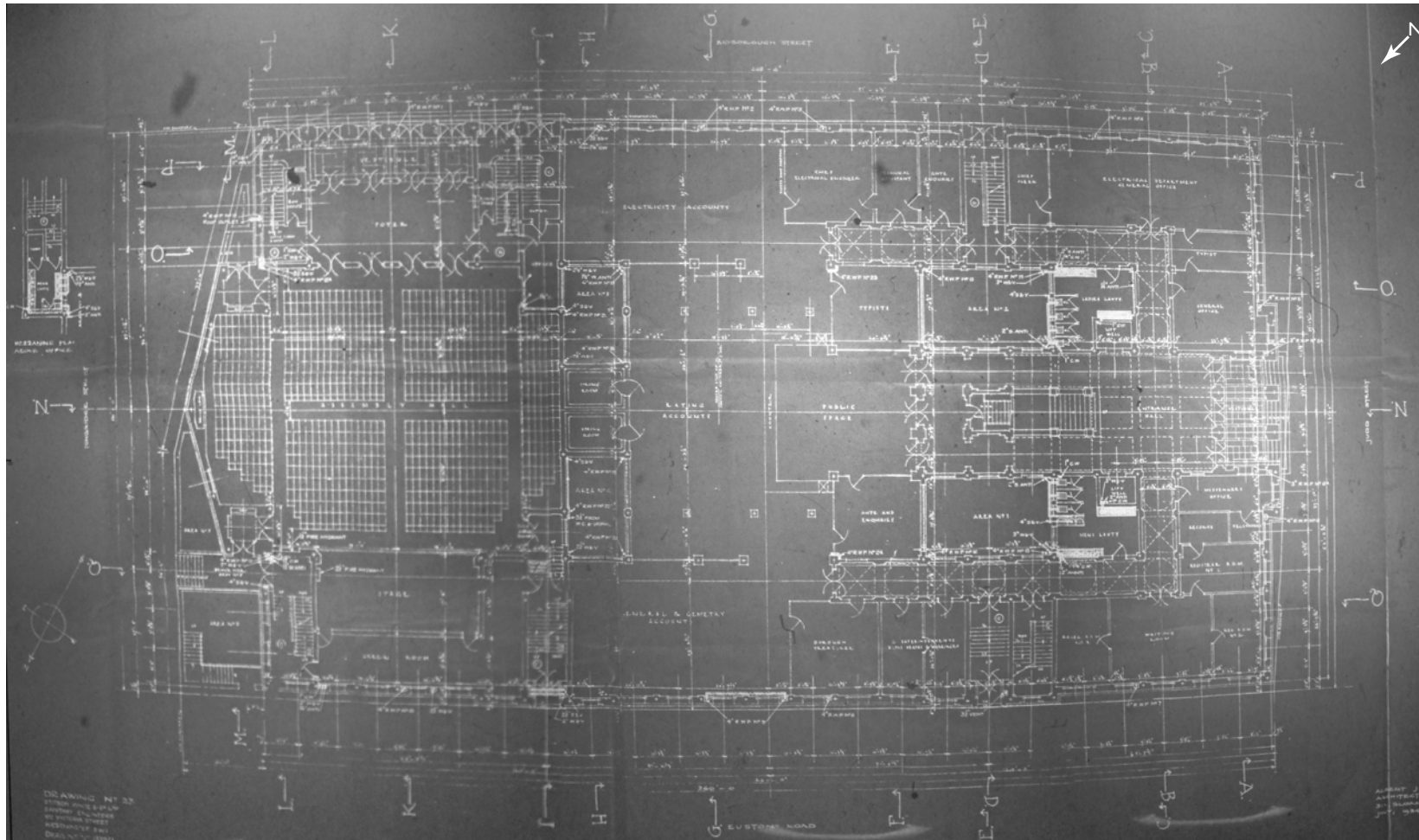
HISTORIC DEVELOPMENT

A full set of plans, drawn up by Thomas, date from mid-1934 just before the building work began. They are reproduced over the following pages. The plans show that the functions and locations of the key spaces within the building as originally conceived and have changed little in the intervening years. The ground floor plan shows the assembly hall (now the Camden Centre), main entrance, entrance hall and grand staircase. The First floor, shows the galleries of the assembly hall, the Council Chamber, committee and members rooms and mayor's parlour, all of which remain today. The Second floor shows that is planned to be occupied by various Council department offices (public health, estates, Town Clerk, engineer's, work's). At Third floor provision was made for the valuation department, rooms for records, the baths and cemetery department and further office space. The Basement contained the electricity department show-room and demonstration kitchen, cloakrooms and lavatories for the assembly hall, kitchens, stores and heating and ventilating plant rooms.



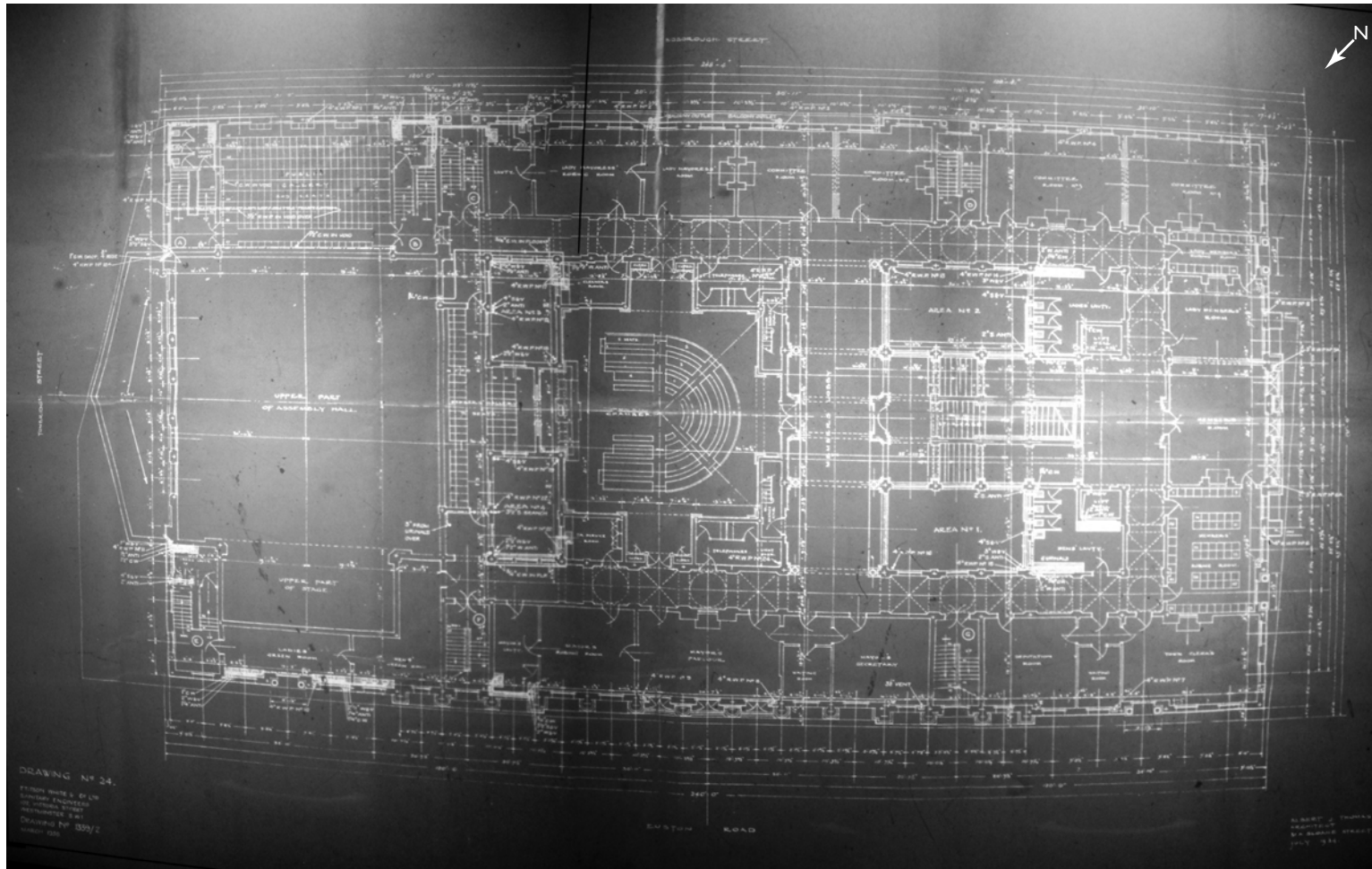
Basement floor plan showing the kitchen, ventilation chamber, muniments rooms and strong rooms, A. J. Thomas, July 1934 (© Camden Local Studies)

HISTORIC DEVELOPMENT



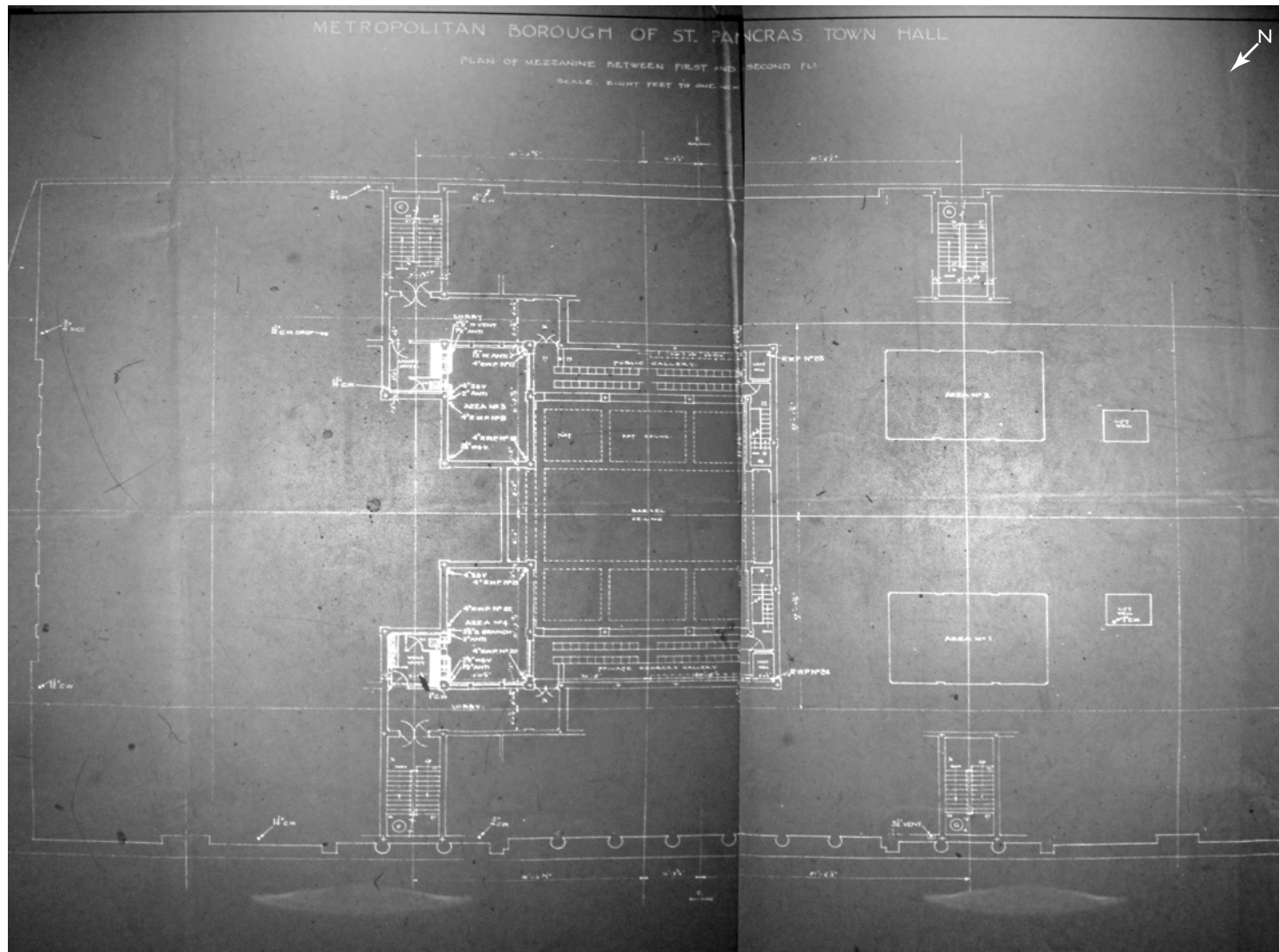
Ground floor plan showing the assembly hall at the east end, the electrical department and the main entrance and entrance hall at the west, Judd, Street end, A. J. Thomas, July 1934 (© Camden Local Studies)

HISTORIC DEVELOPMENT



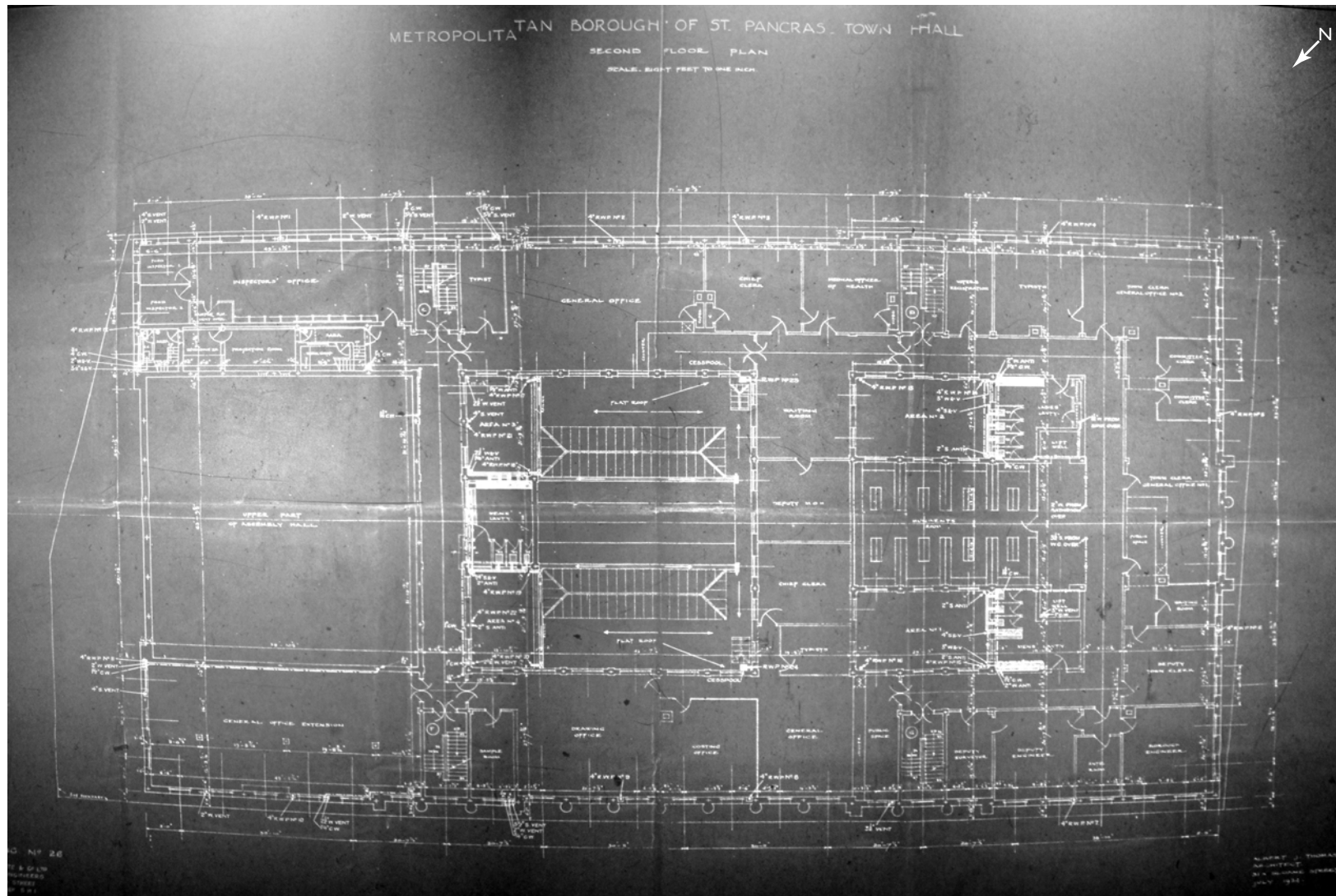
First floor plan showing the upper part of the assembly hall at the east end, the Council Chamber in the centre and the Mayor's Room, Committee Rooms and toilets wrapping around the Council Chamber and to the west of the plan, A. J. Thomas, July 1934 (© Camden Local Studies)

HISTORIC DEVELOPMENT



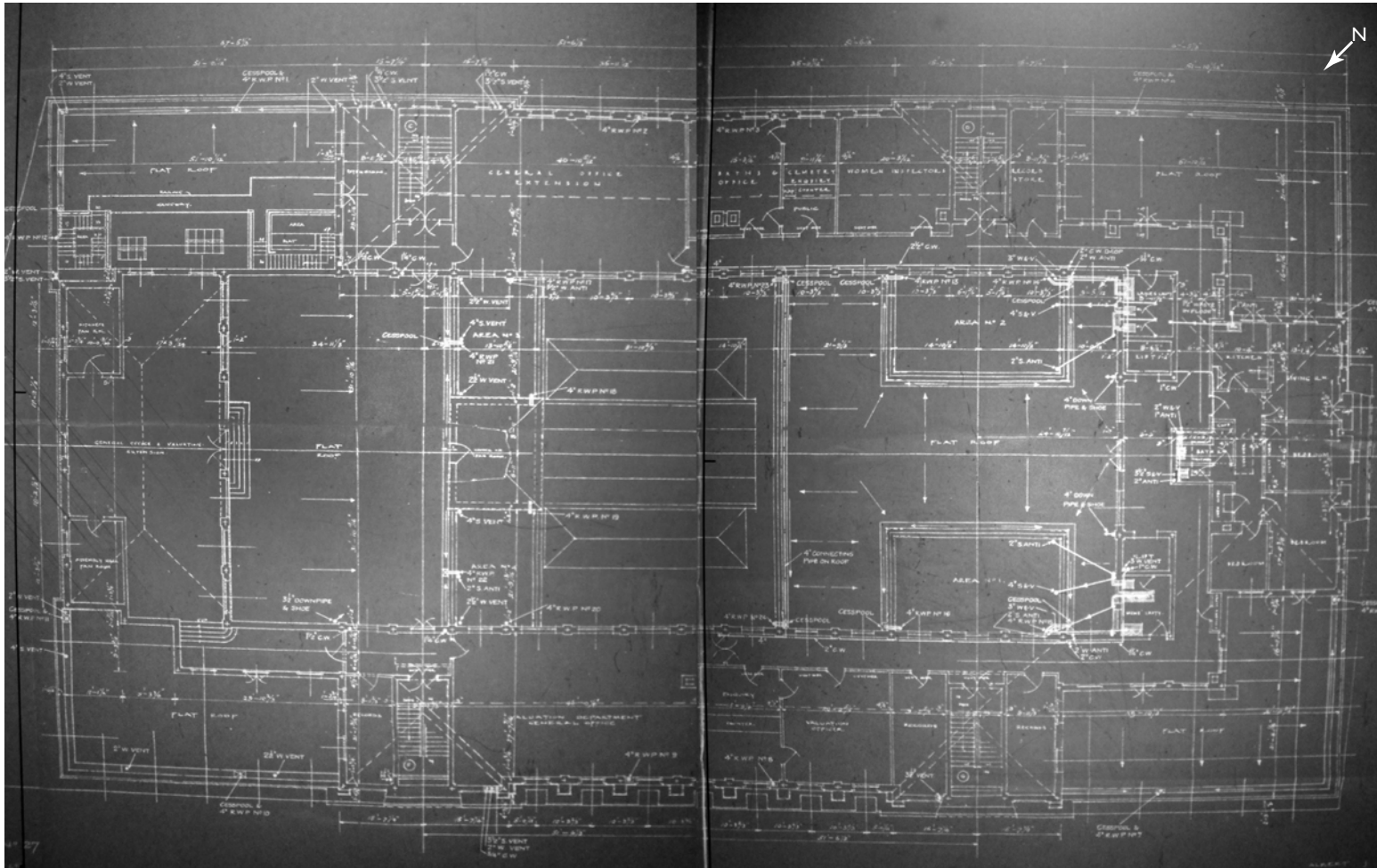
Mezzanine plan, between First and Second floors showing the galleries of the Council Chamber, A. J. Thomas, August 1934 (© Camden Local Studies)

HISTORIC DEVELOPMENT



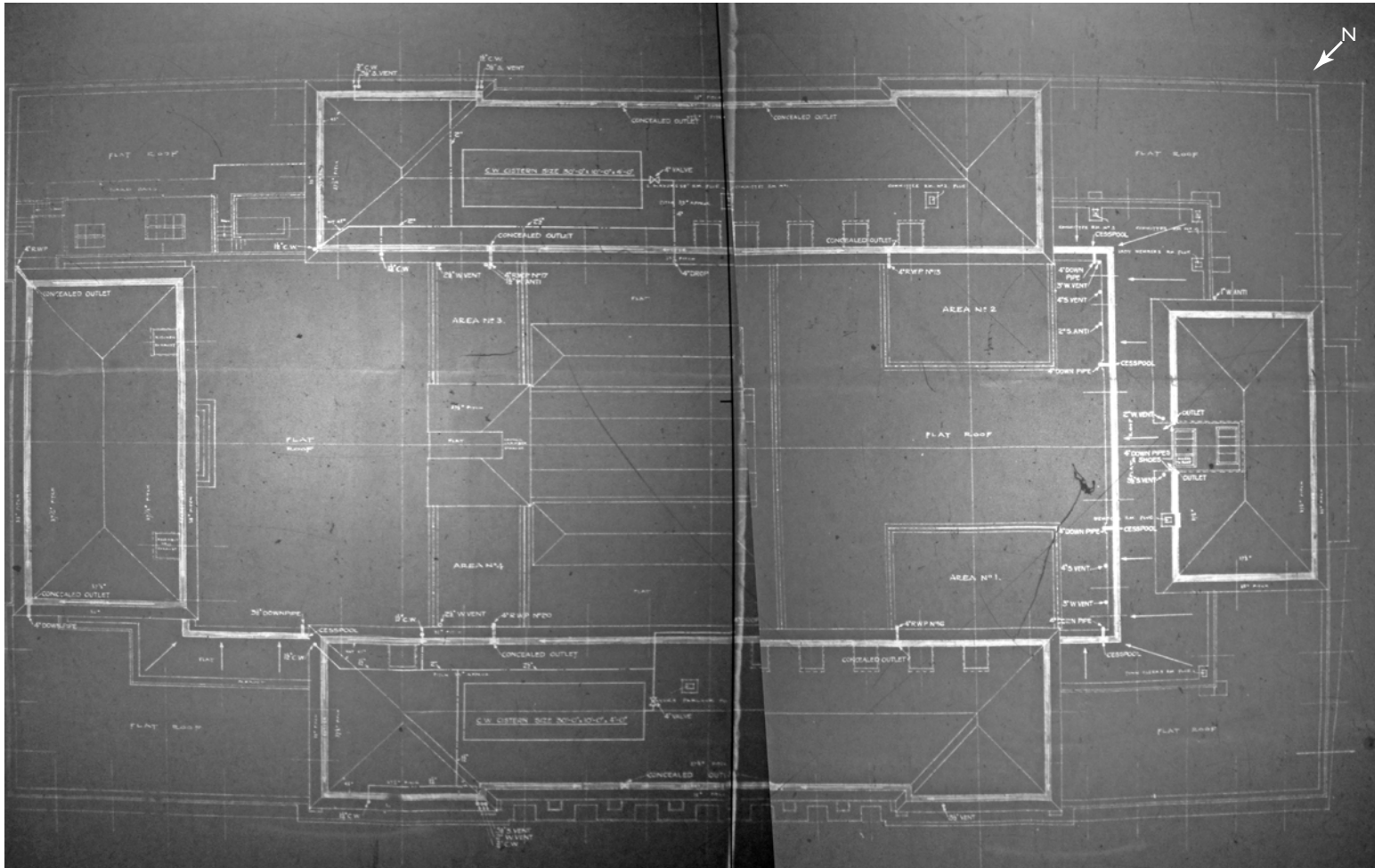
Second floor plan showing the upper part of the Assembly Hall at the east end, the roof of the Council Chamber, a Muniments Room to the west and general offices and toilets around the sides, A. J. Thomas, July 1934 (© Camden Local Studies)

HISTORIC DEVELOPMENT



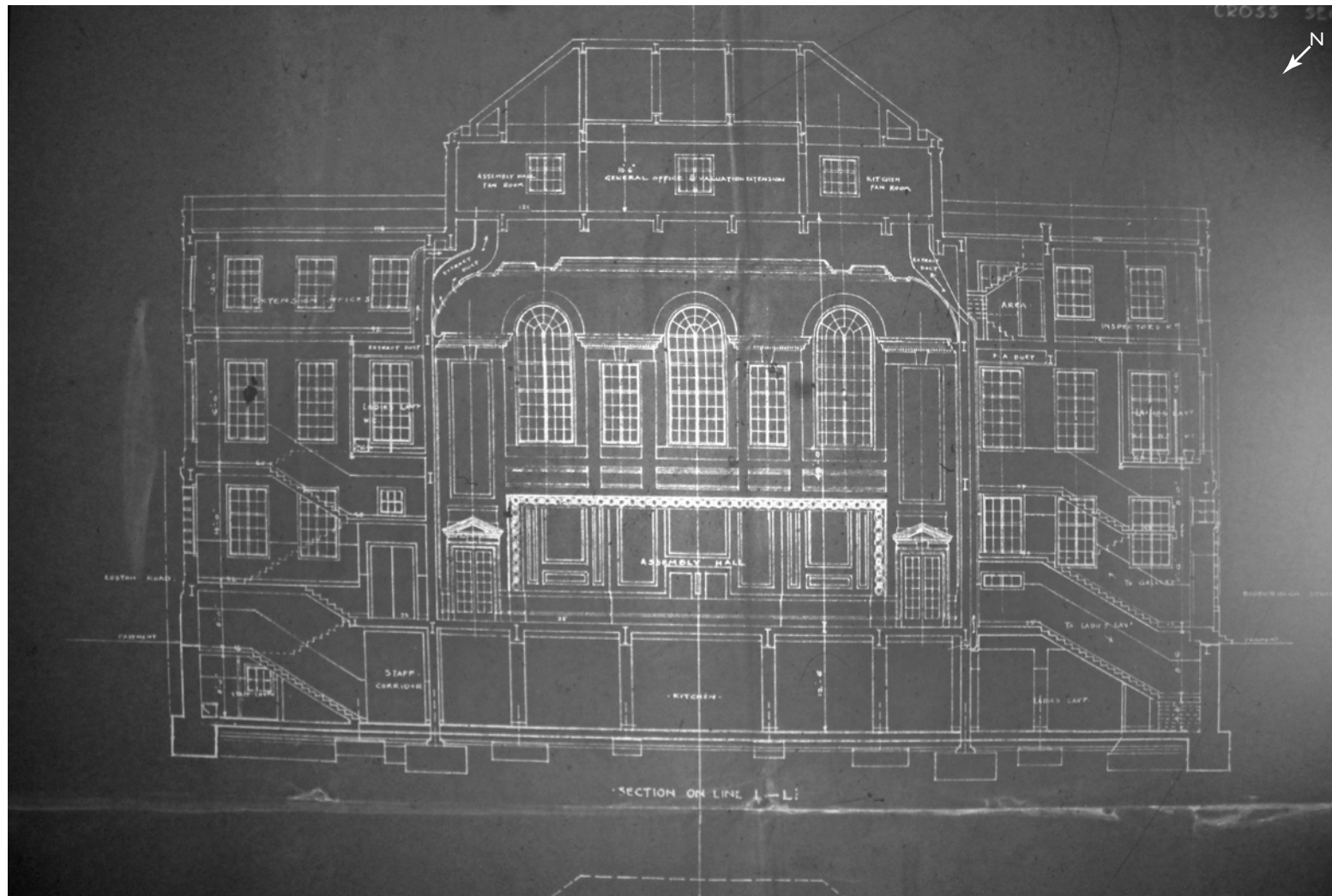
Third floor plan showing an office and a flat roofed / terrace area over the assembly hall, terraces at each of the four corners of the building and a further flat roofed area to the west of the Council Chamber roof. Below the north, south and west pitched roofs are a combination of offices, stores and a caretakers flat. A. J. Thomas, August 1934 (© Camden Local Studies)

HISTORIC DEVELOPMENT



Roof plan showing the different areas of roof previously identified along with four areas of pitched roofs one on each side of the building, A. J. Thomas, August 1934 (© Camden Local Studies)

HISTORIC DEVELOPMENT



Section through the assembly hall looking east, August 1934 (© Camden Local Studies). The triple height volume of the Camden Centre is clearly visible in this drawing with the three windows which overlook Tonbridge Walk