

▼ FFL + 38.42m

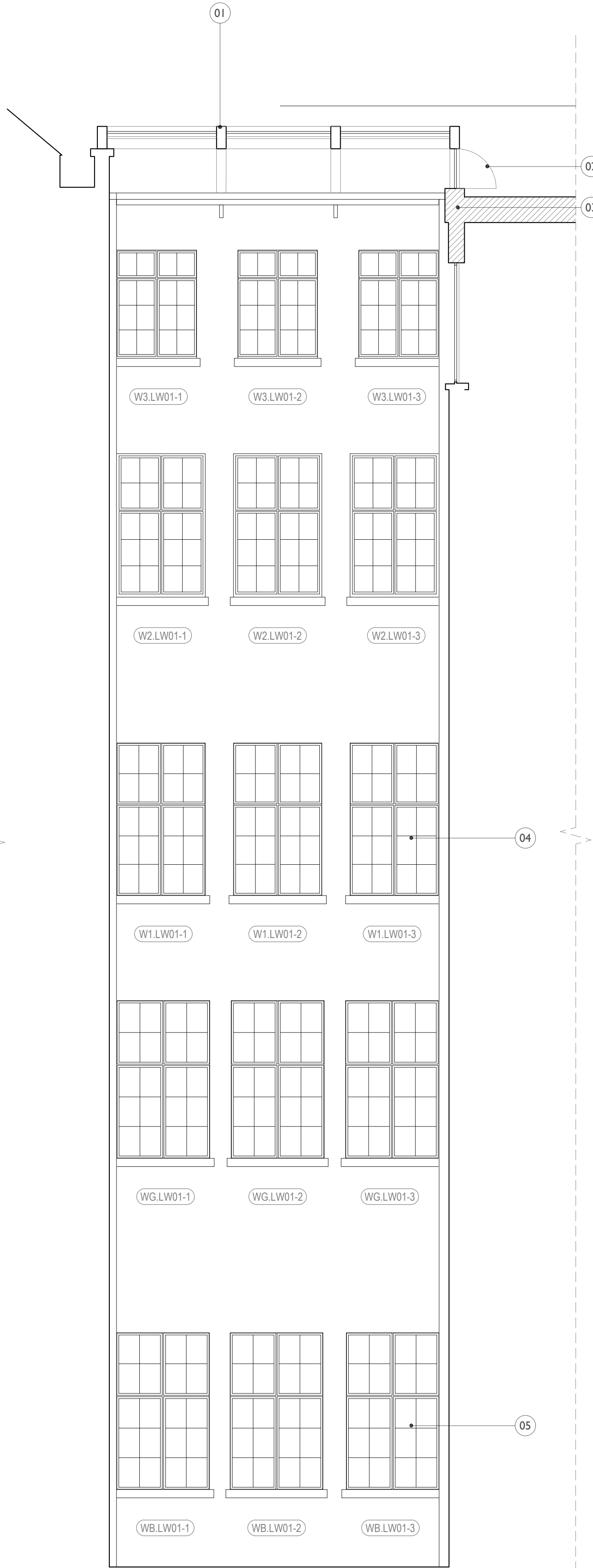
▼ FFL + 33.42m

▼ FFL + 29.75m

▼ FFL + 24.88m

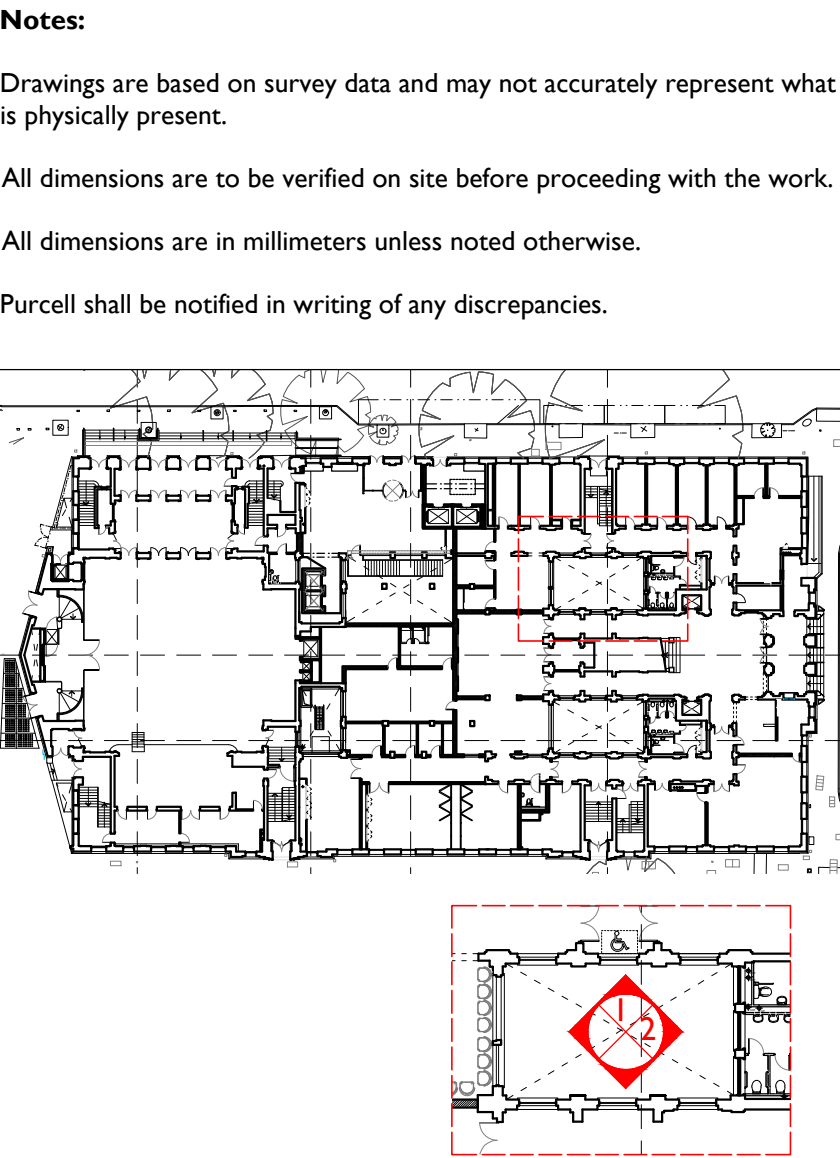
▼ FFL + 19.56m

▼ FFL + 15.75m



2 LW.01 - WEST ELEVATION  
92105 1:200 @ A1

1. Glazed roof lights over lightwells constructed with steel portal frame and with inset glazing
2. Outward opening AOVs for smoke ventilation integrated into rooflights
3. Upstand created on new roof construction to receive new rooflight
4. Existing windows to be retained and refurbished. Secondary glazing to be installed internally in specific locations at second and third for acoustic separation.
5. Secondary glazing to be installed at basement to achieve a 60min FR.
6. Doors to be replaced with new 60min FR doors with automatic openings for smoke ventilation.
7. Removal of redundant services and repair and cleaning of glazed brick façade
8. Track lighting to be integrated at high level.
9. AOVs to be integrated to side of rooflights

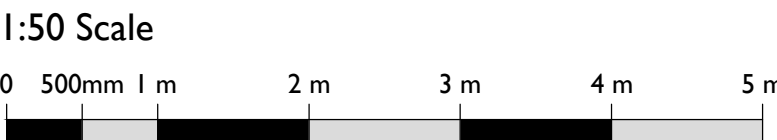


Proposed Works Key

- Proposed Wall
- Window Number
- Door Number
- Refuge Point
- Annotation Item
- Manhole Location

Drawings to be read in conjunction with:

Use Designation Plans: Drawing Series (92)900  
Conservation Strategy Report CTH-PUR-MP-00-SP-A-00005  
Window Strategy Report CTH-PUR-XX-XX-RP-A-00012



S5 P00 18 Apr 2019 NS NS

ISSUE	DATE	DRAWN	CHECKED	DESCRIPTION
DRAWING TITLE	GA PROPOSED SOUTH-WEST LIGHTWELL 1 - ELEVATIONS			
DRAWING NO.	CTH-PUR-MP-ZZ-DR-A-92105			
REVISION	S5 P00			
SIZE & SCALE	A1L 1:50			
DRAWING STATUS	S5 SUITABLE FOR PLANNING			

CLIENT Lendlease

PROJECT Camden Town Hall

JOB NUMBER 238664

