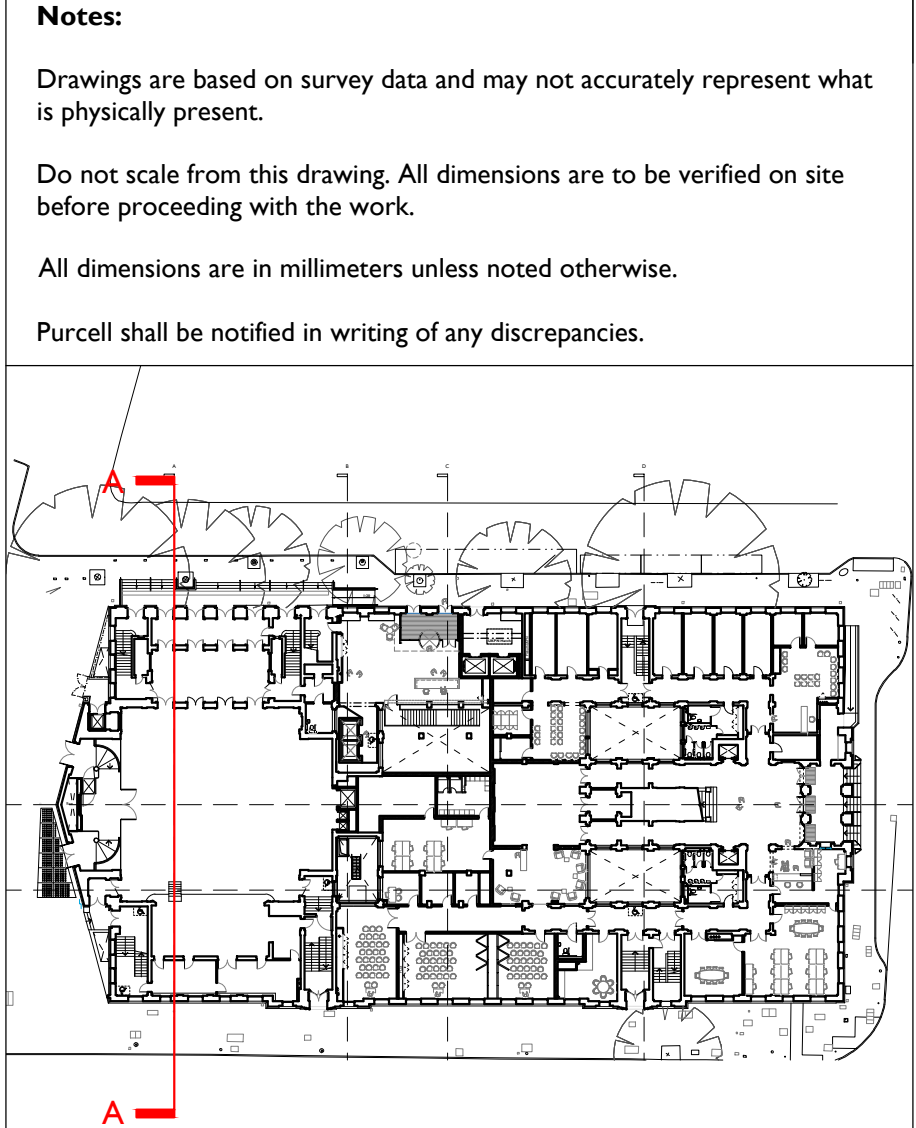


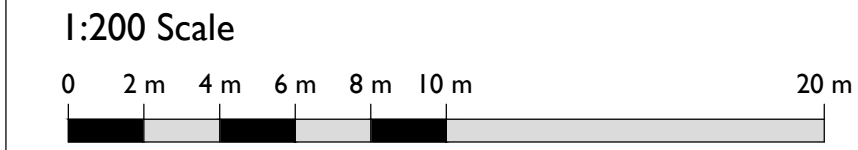
- Screens inserted in front of recessed area to Camden Centre providing a lobby for new Tonbridge Walk entrance.
- 2No. new doors inserted onto Tonbridge Walk and section of internal floor level lowered to provide level access.
- Historic entrance from Bidborough Street retained
- Raked seating removed and new raised floor inserted to create a split level gallery. Level access provided from Stair A and Stair B lobbies.
- Open office space created to CAT A finish. New services sensitively integrated into historic fabric and acoustic suspended ceilings to contain services.
- Blue roof attenuation integrated into external terraces. New paving overlaid.
- Open office space created to CAT A finish. New services sensitively integrated into historic fabric and acoustic suspended ceilings to contain services.
- Private dining rooms areas - refurbishment of finishes and targeted conservation repairs to be undertaken. Finishes to be proposed as part of tenant fit out
- Much of the existing fabric retained - plant and back of house spaces inserted
- Much of the existing fabric retained - support spaces for the Camden centre inserted.
- New access stairs provided from raised office space to terraces
- Roof Build-Up to be upgraded to improve thermal performance.



- Proposed Works Key**
- Proposed Wall
  - Window Number
  - Door Number
  - Refuge Point
  - Annotation Item
  - Manhole Location

Drawings to be read in conjunction with:

Use Designation Plans: Drawing Series (92)900  
Conservation Strategy Report CTH-PUR-MP-00-SP-A-00005  
Window Strategy Report CTH-PUR-XX-XX-RP-A-00012



SS P00 18 Apr 2019 NS NS

ISSUE	DATE	DRAWN	CHECKED	DESCRIPTION
<b>DRAWING TITLE</b>	GA PROPOSED SECTION A-A			
<b>DRAWING NO.</b>	CTH-PUR-MP-ZZ-DR-A-92200			
<b>REVISION</b>	SS P00			
<b>SIZE &amp; SCALE</b>	A1L 1:200			
<b>DRAWING STATUS</b>	SS SUITABLE FOR PLANNING			

<b>CLIENT</b>	Lendlease	
<b>PROJECT</b>	Camden Town Hall	
<b>JOB NUMBER</b>	238664	