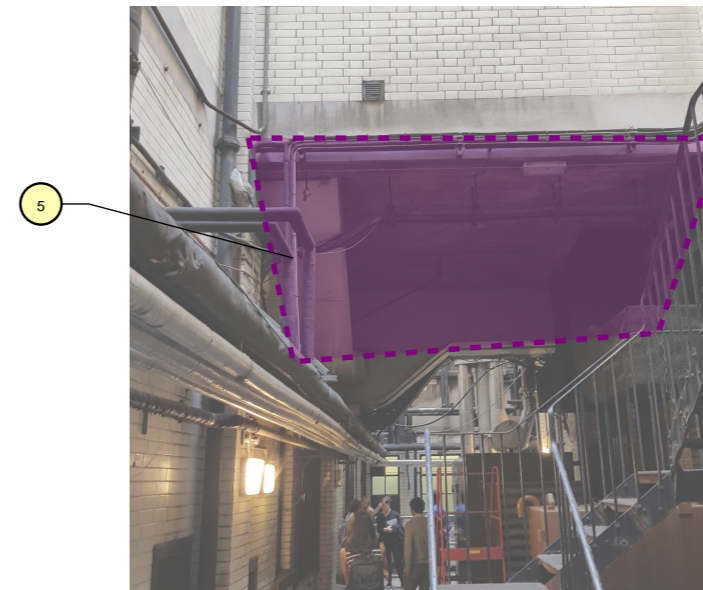
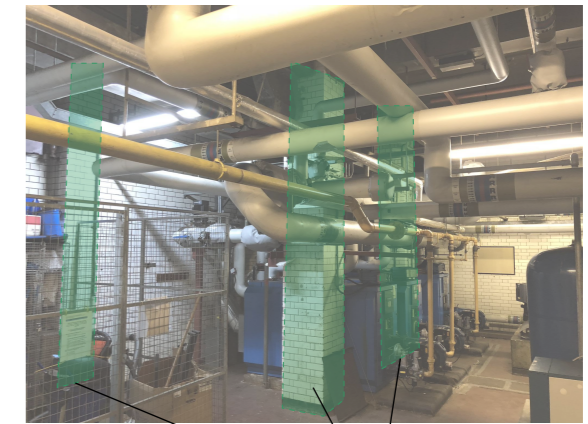
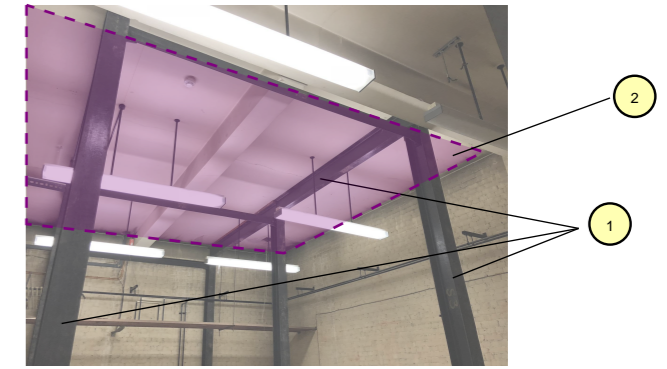
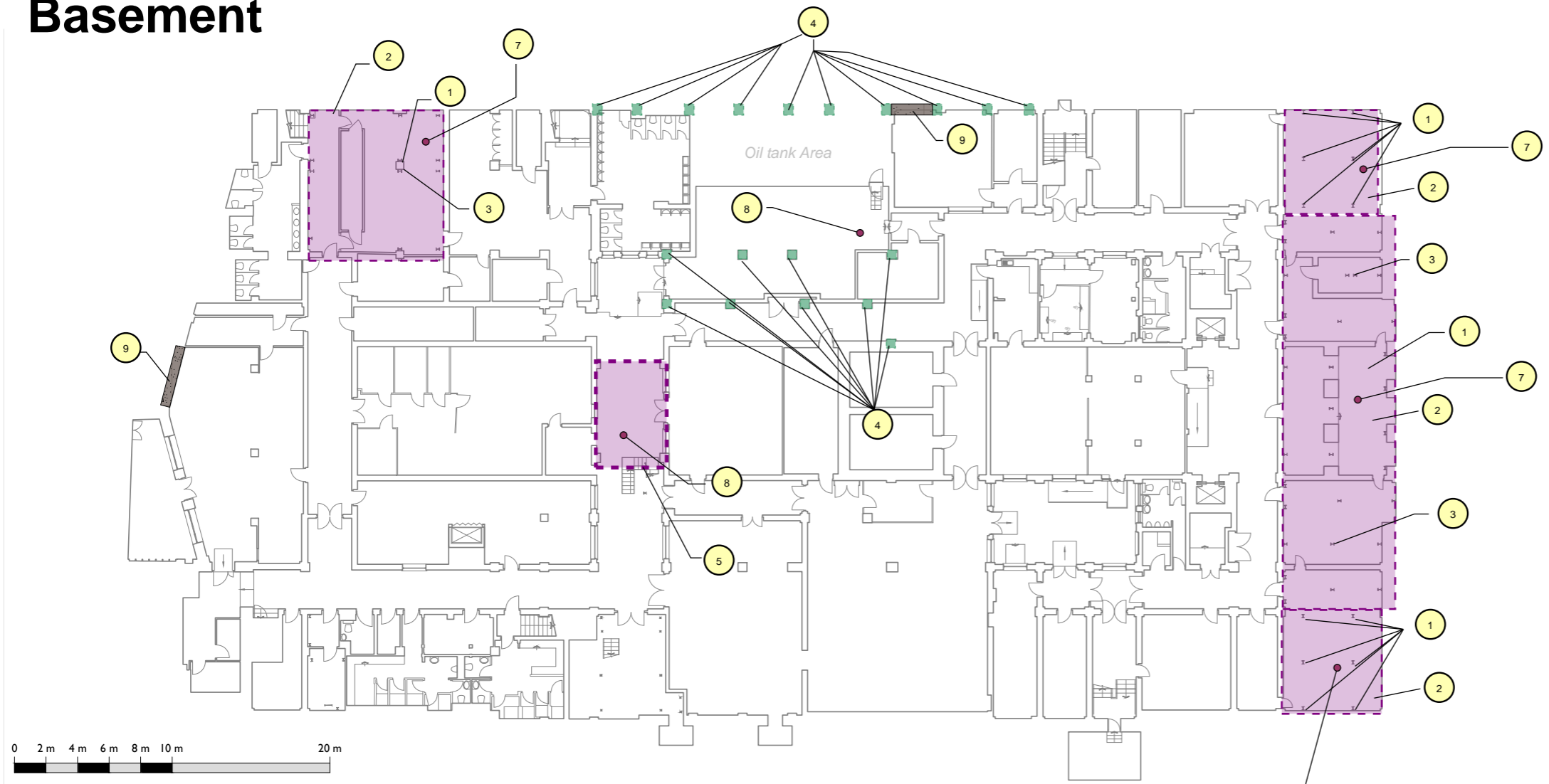


Basement



- 1 C4
Information for steel beam & column properties - connection with the slab above.
- 2 C4
Information for beam properties/layout at the ground floor slab - concrete encased beams and columns to be opened.
- 3 Footing of steel column to be exposed - information for footings dimensions
- 4 C4
Information for column properties.
- 5 C4
Information and beam properties/layout on ground floor and basement slab
- 6 C4
Information and beam properties/layout for basement slab
- 7 Information for floor build up at ground floor slab - Number may be reduced if results are consistent.
- 8 Information for floor build up at basement slab
- 9 C2
Information for Retaining Wall thickness and buildup

Note:
Final extent of investigations may vary (increase/decrease) according to design development and/or initial survey findings. Contractor to provide rates per type of survey to facilitate this process.

Note:
Level of Reinstatement of non structural elements to be defined by others