

# Appendix 1

## Structural Drawings

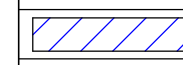
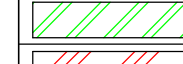
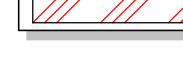


GENERAL NOTES

1. DO NOT SCALE FROM THIS DRAWING.

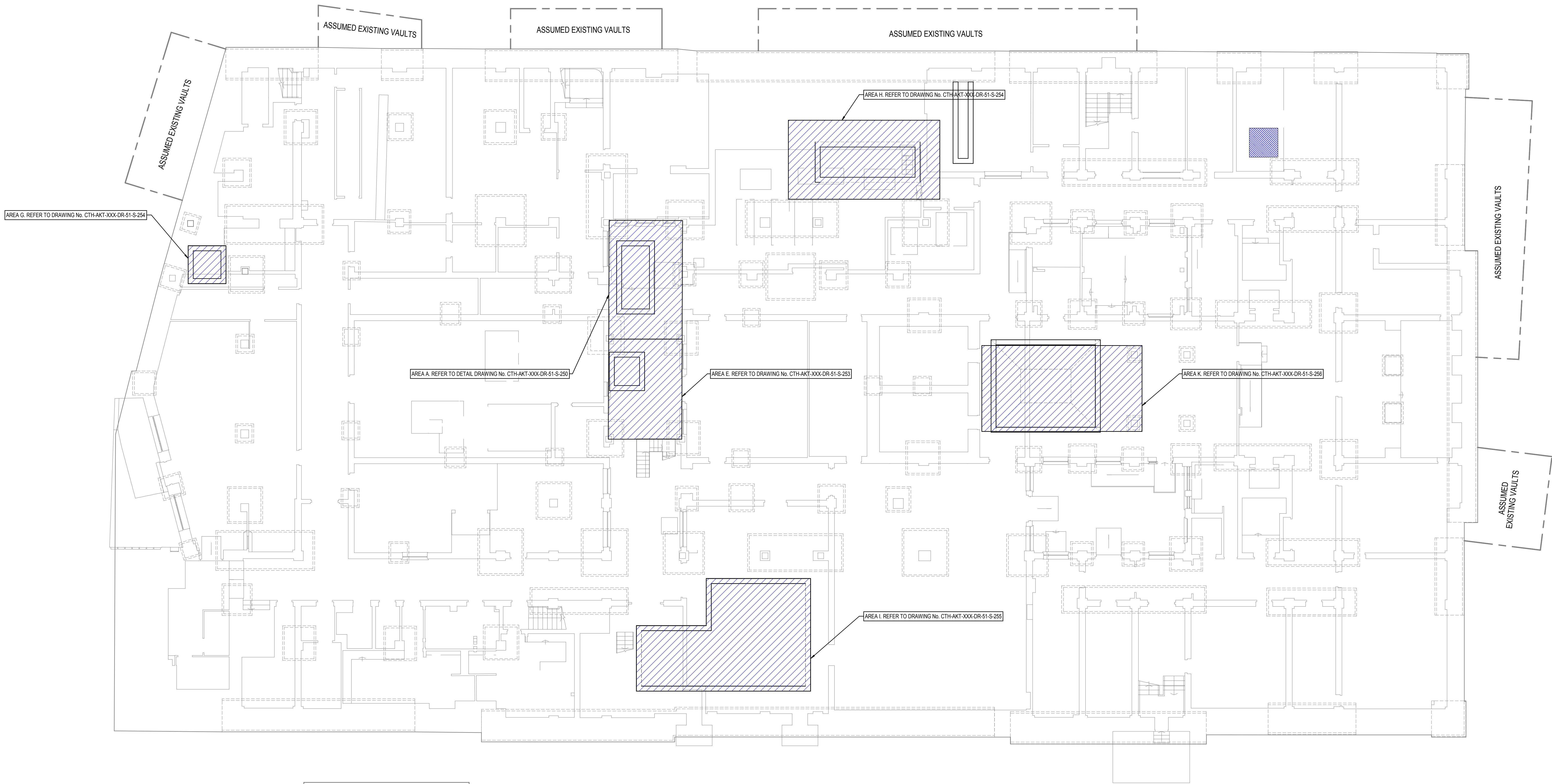
2. ALL DIMENSIONS ARE IN MILLIMETRES (mm) AND ALL LEVELS ARE IN METRES (m) UNLESS NOTED OTHERWISE.

3. THIS DRAWING IS TO BE READ IN CONJUNCTION WITH ALL RELEVANT ARCHITECTS AND ENGINEERS DRAWINGS AND SPECIFICATIONS.

| STRUCTURAL WORKS  |                          |
|---|--------------------------|
|  | DEMOLITION AND NEW BUILD |
|  | NEW BUILD                |
|  | DEMOLITION               |

KEY

--- DENOTES ASSUMED EXISTING FOUNDATION LAYOUT



THIS DRAWING IS TO BE READ IN CONJUNCTION WITH THE BELOW GROUND DRAINAGE STRATEGY SKETCH

FOR THE EXTENT OF STRUCTURAL INTERVENTIONS TO INCORPORATE MEP BWH REQUIREMENTS, REFER TO HSK-048

BASEMENT LEVEL KEY PLAN

1:100

1/250

|     |          |                    |    |    |
|-----|----------|--------------------|----|----|
| P.2 | 20.02.19 | ISSUED FOR STAGE 3 | SH | EA |
| P.1 | 10.02.18 | ISSUED FOR COSTING | SH | EA |

KEY | DATE | DESCRIPTION | BY | CHECK

THIS DRAWING IS TO BE READ IN CONJUNCTION WITH ALL RELEVANT ARCHITECTS AND ENGINEERS DRAWINGS AND SPECIFICATIONS.

THE CONTRACTOR SHALL BE RESPONSIBLE FOR THE ACCURACY OF THE DATA AND INFORMATION PROVIDED IN THIS DRAWING. THE CONTRACTOR SHALL BE RESPONSIBLE FOR THE ACCURACY OF THE DATA AND INFORMATION PROVIDED IN THIS DRAWING. THE CONTRACTOR SHALL BE RESPONSIBLE FOR THE ACCURACY OF THE DATA AND INFORMATION PROVIDED IN THIS DRAWING.



Consulting Structural and Civil Engineers

White Collar Factory,  
1 Old Street Yard,  
London  
EC1Y 8AF

T +44 (0)20 7250 7777  
F +44 (0)20 7250 5555  
E info@akt-ii.com  
W www.akt-ii.com

CAMDEN TOWN HALL  
LENLEASE

CAMDEN TOWN HALL

BASEMENT 01 LEVEL

|         |        |          |               |
|---------|--------|----------|---------------|
| SH      | EA     | 13.02.19 | A0            |
| STAGE 3 | STATUS | S4       | REVISION CODE |

STAGE 3

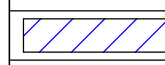
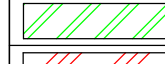

CTH-AKT-B0-DR-20-S-099

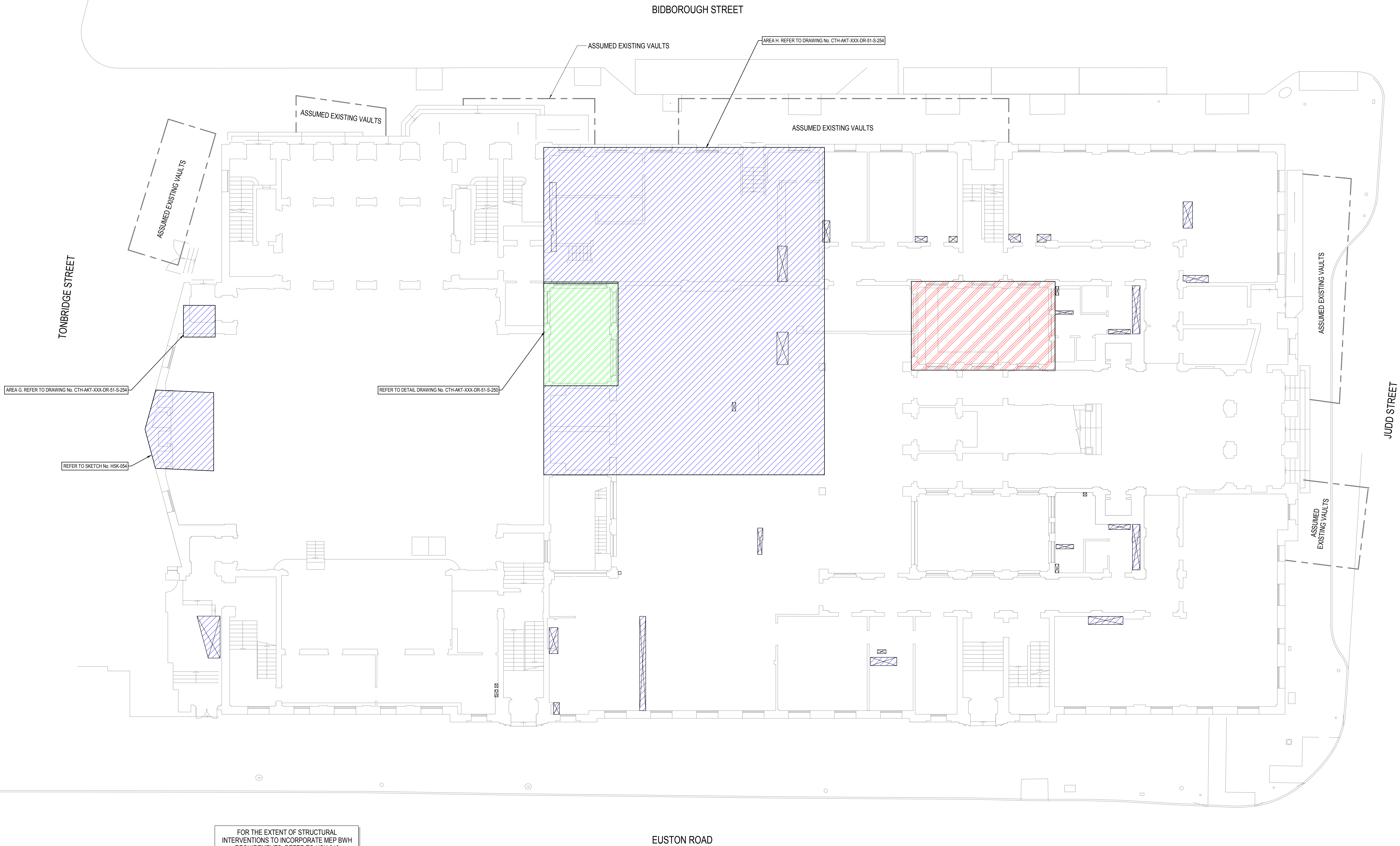
P2

REVISION

20.02.19 11:17:55

GENERAL NOTES  
1. DO NOT SCALE FROM THIS DRAWING.  
2. ALL DIMENSIONS ARE IN MILLIMETRES (mm) AND ALL LEVELS ARE IN METRES (m) UNLESS NOTED OTHERWISE.  
3. THIS DRAWING IS TO BE READ IN CONJUNCTION WITH ALL RELEVANT ARCHITECTS AND ENGINEERS DRAWINGS AND SPECIFICATIONS.

| STRUCTURAL WORKS  |                          |
|---|--------------------------|
|  | DEMOLITION AND NEW BUILD |
|  | NEW BUILD                |
|  | DEMOLITION               |



EUSTON ROAD

GROUND LEVEL KEY PLAN

1:100

|  |          |                    |    |    |
|--|----------|--------------------|----|----|
| P 2  | 20.02.19 | ISSUED FOR STAGE 3 | SH | EA |
| A 7  | 10.02.19 | ISSUED FOR COSTING | SH | EA |
| REV / DATE / DESCRIPTION   |          |                    |    |    |
| IF THESE DIGITAL WORKS ARE USED, THESE ARE PROVIDED FOR INFORMATION ONLY. INFORMATION IS OUTSIDE OUR DISCREET SCOPE OF SERVICES AND WE ACCEPT NO RESPONSIBILITY FOR THE ACCURACY OF THE DIGITAL DATA SUPPLIED. |          |                    |    |    |
| THE CONTRACTUAL DRAWING INFORMATION PROVIDED BY ACT II UNDER OUR AGREEMENT SHALL BE LIMITED TO THE DIGITAL DRAWING IN ELECTRONIC FORM. WITH RESPECT TO LEGAL CONVEYANCE AND VERIFICATION, SET THIS OUT.        |          |                    |    |    |



Consulting Structural and Civil Engineers  
White Collar Factory,  
1 Old Street Yard,  
London  
EC1Y 8AF  
T +44 (0)20 7292 7777  
F +44 (0)20 7292 5555  
E info@akt-ii.com  
W www.akt-ii.com

CAMDEN TOWN HALL  
LENDELEASE

CAMDEN TOWN HALL

GROUND LEVEL

|         |    |          |               |
|---------|----|----------|---------------|
| SH      | EA | 13.02.19 | A0            |
| STAGE 3 |    |          | S4            |
| STATUS  |    |          | REVISION CODE |

STAGE 3

CTH-AKT-L00-DR-20-S-100

P2

REVISION

20.02.2019 17:55:07





1. DO NOT SCALE FROM THIS DRAWING.  
2. ALL DIMENSIONS ARE IN MILLIMETRES (mm) AND ALL LEVELS ARE IN METRES (m) UNLESS NOTED OTHERWISE.  
3. THIS DRAWING IS TO BE READ IN CONJUNCTION WITH ALL RELEVANT ARCHITECTS AND ENGINEERS DRAWINGS AND SPECIFICATIONS.

|   |          |                    |    |      |
|---|----------|--------------------|----|------|
| P 1   | 20.03.12 | ISSUED FOR STAGE 3 | SH | EA   |
| REV   | DATE     | DESCRIPTION        | BY | CHKD |
| <p>WHERE DIGITAL MODEL FILES ARE ISSUED, THESE ARE PROVIDED FOR INFORMATION ONLY TO ASSIST OTHER PARTIES DEVELOP THEIR DESIGNS/DRAWINGS/DOCUMENTATION. THIS INFORMATION IS OUTSIDE OUR CONTRACTED SCOPE OF SERVICES AND IT ACCEPTS NO RESPONSIBILITY FOR THE ACCURACY OF THE DIGITAL DATA SUPPLIED.</p> <p>THE CONTRACTUAL DRAWINGS/INFORMATION PRODUCED BY AKT II UNDER OUR APPOINTMENT ARE LIMITED TO THE 2D PDF DRAWING FILES/PAPER COPIES, WITH RESPECT TO DESIGN COORDINATION AND DIMENSIONAL SETTING OUT.</p> |          |                    |    |      |



|                   |               |                  |                        |
|-------------------|---------------|------------------|------------------------|
| TITLE             |               |                  |                        |
| SLH<br>DRAWN      | EA<br>CHECKED | MAR 2019<br>DATE | A0<br>2040ET 3229      |
| STAGE 3<br>STATUS |               |                  | S4<br>SUITABILITY CODE |

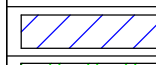
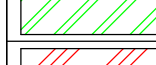

|                          |          |
|--------------------------|----------|
| CTH-AKT-01M-DR-20-S-101M | P1       |
| DRAWING No.              | REVISION |

GENERAL NOTES

1. DO NOT SCALE FROM THIS DRAWING.

2. ALL DIMENSIONS ARE IN MILLIMETRES (mm) AND ALL LEVELS ARE IN METRES (m) UNLESS NOTED OTHERWISE.

3. THIS DRAWING IS TO BE READ IN CONJUNCTION WITH ALL RELEVANT ARCHITECTS AND ENGINEERS DRAWINGS AND SPECIFICATIONS.

| STRUCTURAL WORKS  |                          |
|---|--------------------------|
|  | DEMOLITION AND NEW BUILD |
|  | NEW BUILD                |
|  | DEMOLITION               |



FOR THE EXTENT OF STRUCTURAL INTERVENTIONS TO INCORPORATE MEP BWH REQUIREMENTS, REFER TO HSK-048

LEVEL 02 KEY PLAN

1 : 100

|   |          |                    |    |    |
|---|----------|--------------------|----|----|
| P 2   | 20.02.19 | ISSUED FOR STAGE 3 | S4 | EA |
| A 2   | 10.02.19 | ISSUED FOR COSTING | A0 | EA |
| REV / DATE / DESCRIPTION  |          |                    |    |    |
| IF THESE DIGITAL WORKS ARE USED, THESE ARE PROVIDED FOR INFORMATION ONLY. INFORMATION IS OUTSIDE THE CONTRACTED SCOPE OF SERVICES AND NOT A CONTRACTUAL RESPONSIBILITY FOR THE ACCURACY OF THE DATA, DATA SUPPLIED. |          |                    |    |    |
| THE CONTRACTUAL DRAWING INFORMATION PROVIDED BY ACT II UNDER OUR RESPONSIBILITY AND LIMITED TO THE LEVEL DRAWING IS TECHNICAL ONLY. WITH RESPECT TO DESIGN INFORMATION AND INFORMATION SETTING OUT.                 |          |                    |    |    |



Consulting Structural and Civil Engineers  
White Collar Factory,  
1 Old Street Yard,  
London  
EC2Y 8AF  
T +44 (0)20 7250 2777  
F +44 (0)20 7250 5055  
E info@akt-ii.com  
W www.akt-ii.com

CAMDEN TOWN HALL  
LENLEASE

CAMDEN TOWN HALL

LEVEL 02

|          |               |          |          |
|----------|---------------|----------|----------|
| SH       | EA            | 13.02.19 | A0       |
| REVISION | DATE          | DATE     | REVISION |
| STAGE 3  | S4            |          |          |
| STATUS   | REVISION CODE |          |          |

STAGE 3

CTH-AKT-L02-DR-20-S-102

P2

REVISION

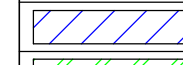
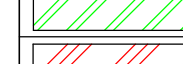
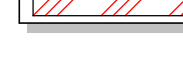
20.02.2019 17:55:09

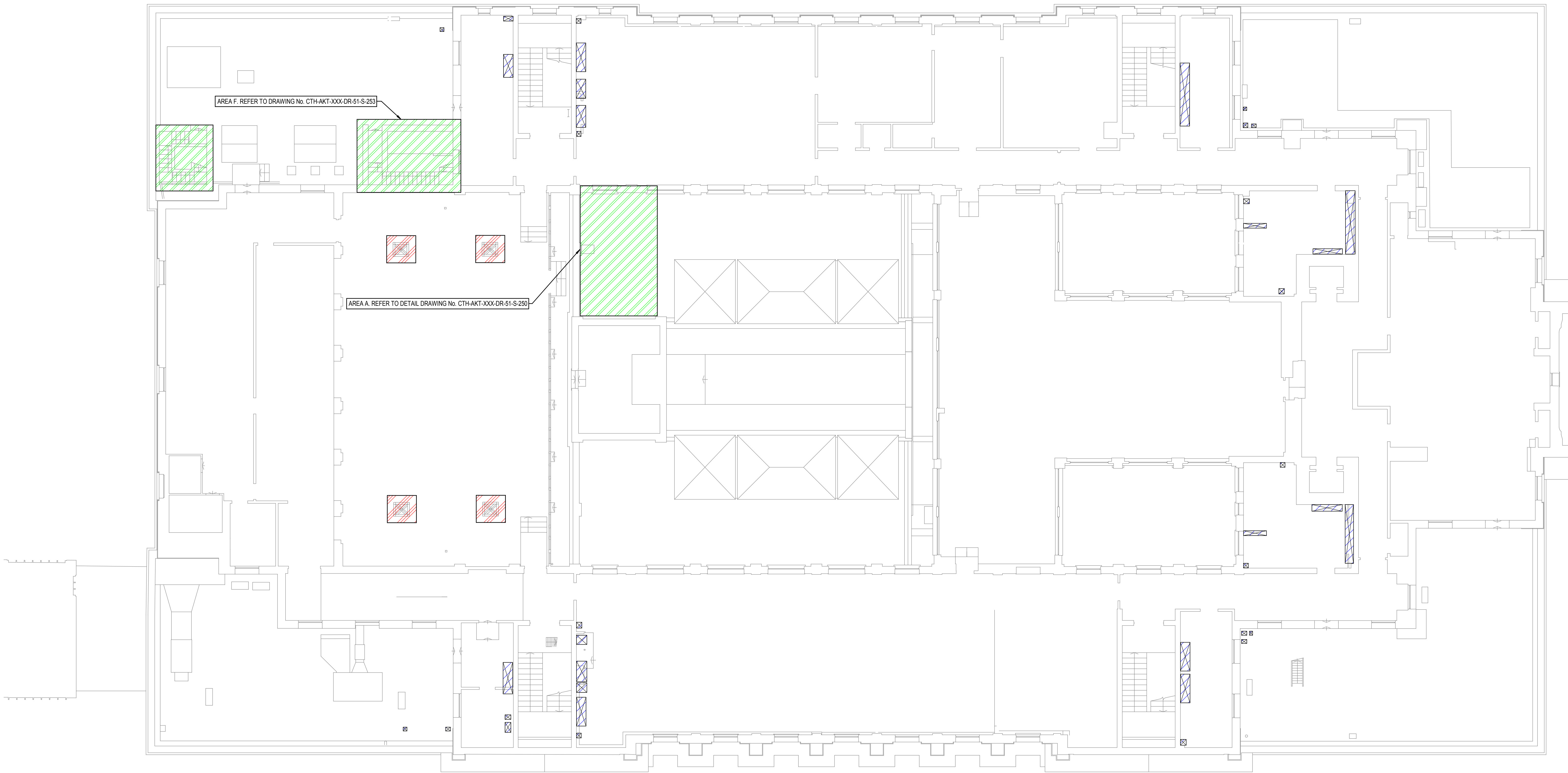
GENERAL NOTES

1. DO NOT SCALE FROM THIS DRAWING.

2. ALL DIMENSIONS ARE IN MILLIMETRES (mm) AND ALL LEVELS ARE IN METRES (m) UNLESS NOTED OTHERWISE.

3. THIS DRAWING IS TO BE READ IN CONJUNCTION WITH ALL RELEVANT ARCHITECTS AND ENGINEERS DRAWINGS AND SPECIFICATIONS.

| STRUCTURAL WORKS  |                          |
|---|--------------------------|
|  | DEMOLITION AND NEW BUILD |
|  | NEW BUILD                |
|  | DEMOLITION               |



FOR THE EXTENT OF STRUCTURAL INTERVENTIONS TO INCORPORATE MEP BIWH REQUIREMENTS, REFER TO HSK-048

LEVEL 03 KEY PLAN

1:100

|           |          |                    |    |      |
|-----------|----------|--------------------|----|------|
| P 2       | 20.02.19 | ISSUED FOR STAGE 3 | S4 | EA   |
| P 1       | 10.02.19 | ISSUED FOR COSTING | S4 | EA   |
| REVISIONS |          |                    |    |      |
| REV       | DATE     | DESCRIPTION        | BY | CHKD |
| 1         | 10.02.19 | ISSUED FOR COSTING | EA | EA   |
| 2         | 20.02.19 | ISSUED FOR STAGE 3 | S4 | EA   |



Consulting Structural and Civil Engineers

White Collar Factory,  
1 Old Street Yard,  
London  
EC1Y 8AF

T +44 (0)20 7292 7777  
F +44 (0)20 7292 5555  
E info@akt-ii.com  
W www.akt-ii.com

CAMDEN TOWN HALL  
LENLEASE

CAMDEN TOWN HALL

LEVEL 03

|         |        |          |               |
|---------|--------|----------|---------------|
| SH      | EA     | 13.02.19 | A0            |
| STAGE 3 | STATUS | S4       | REVISION CODE |

STAGE 3

CTH-AKT-L03-DR-20-S-103




P2

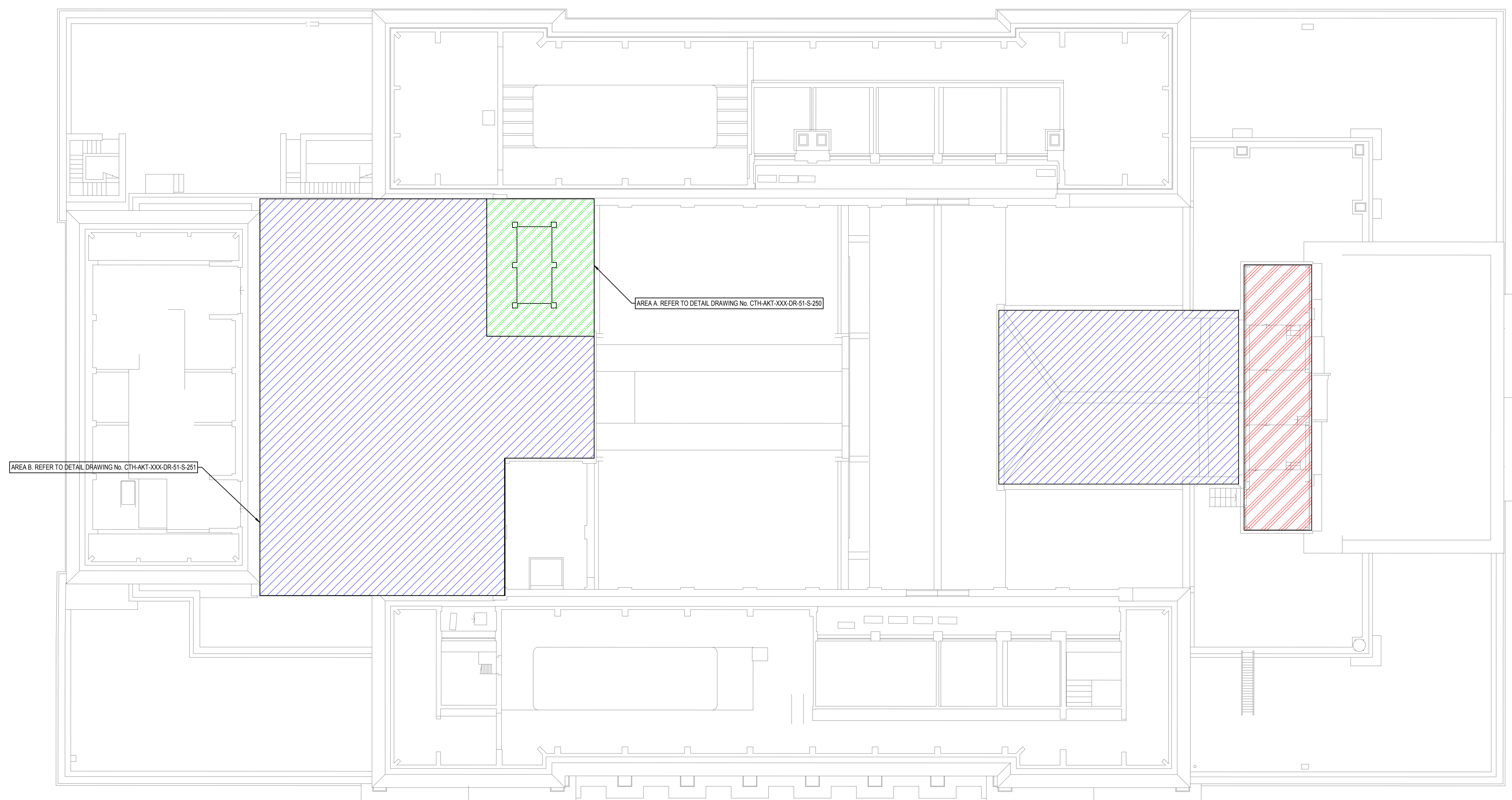
20.02.2019 17:55:09



**GENERAL NOTES**

1. DO NOT SCALE FROM THIS DRAWING.
2. ALL DIMENSIONS ARE IN MILLIMETRES (mm) AND ALL LEVELS ARE IN METRES (m) UNLESS NOTED OTHERWISE.
3. THIS DRAWING IS TO BE READ IN CONJUNCTION WITH ALL RELEVANT ARCHITECTS AND ENGINEERS DRAWINGS AND SPECIFICATIONS.

| STRUCTURAL WORKS  |                          |
|---|--------------------------|
|  | DEMOLITION AND NEW BUILD |
|  | NEW BUILD                |
|  | DEMOLITION               |



**LEVEL 04 KEY PLAN**  
1:100

FOR THE EXTENT OF STRUCTURAL  
INTERVENTIONS TO INCORPORATE MEP BWH  
REQUIREMENTS, REFER TO HSK-048

|     |          |                    |    |      |
|-----|----------|--------------------|----|------|
| P 1 | 20.03.19 | ISSUED FOR STAGE 3 | SH | EA   |
| REV | DATE     | DESCRIPTION        | BY | CHKD |

WHERE DIGITAL MODEL FILES ARE ISSUED, THESE ARE PROVIDED FOR INFORMATION ONLY. THE USER ACCEPTS ALL RISK OF LOSS OF THESE DESIGNS/DRAWINGS/DOCUMENTATION. THIS INFORMATION IS OUTSIDE OUR CONTRACTED SCOPE OF SERVICES AND AKT II ACCEPTS NO RESPONSIBILITY FOR THE ACCURACY OF THE DIGITAL DATA SUPPLIED.

THE CONTRACTUAL DRAWINGS/INFORMATION PRODUCED BY AKT II UNDER OUR APPOINTMENT ARE LIMITED TO THE 2D PDF DRAWING FILE/PAPER COPIES, WITH REFERENCE TO DESIGN COORDINATION AND DIMENSIONAL SETTING OUT.



Consulting Structural and Civil Engineers  
White Collar Factory,  
1 Old Street Yard,  
London,  
EC1Y 8AF  
T +44 (0)20 7250 7777  
F +44 (0)20 7250 5555  
E [info@akt-uk.com](mailto:info@akt-uk.com)  
W [www.akt-uk.com](http://www.akt-uk.com)

CAMDEN TOWN HALL  
LENDLEASE

CAMDEN TOWN HALL

LEVEL 04

|                   |               |                  |                           |
|-------------------|---------------|------------------|---------------------------|
| TITLE             |               |                  |                           |
| NT<br>DRAWN       | EA<br>CHECKED | 15.03.19<br>DATE | A0<br>SHEET SIZE          |
| STAGE 3<br>STATUS |               |                  | S4<br>SUSTAINABILITY CODE |

STAGE 3

CTH-AKT-L04-DR-20-S-104

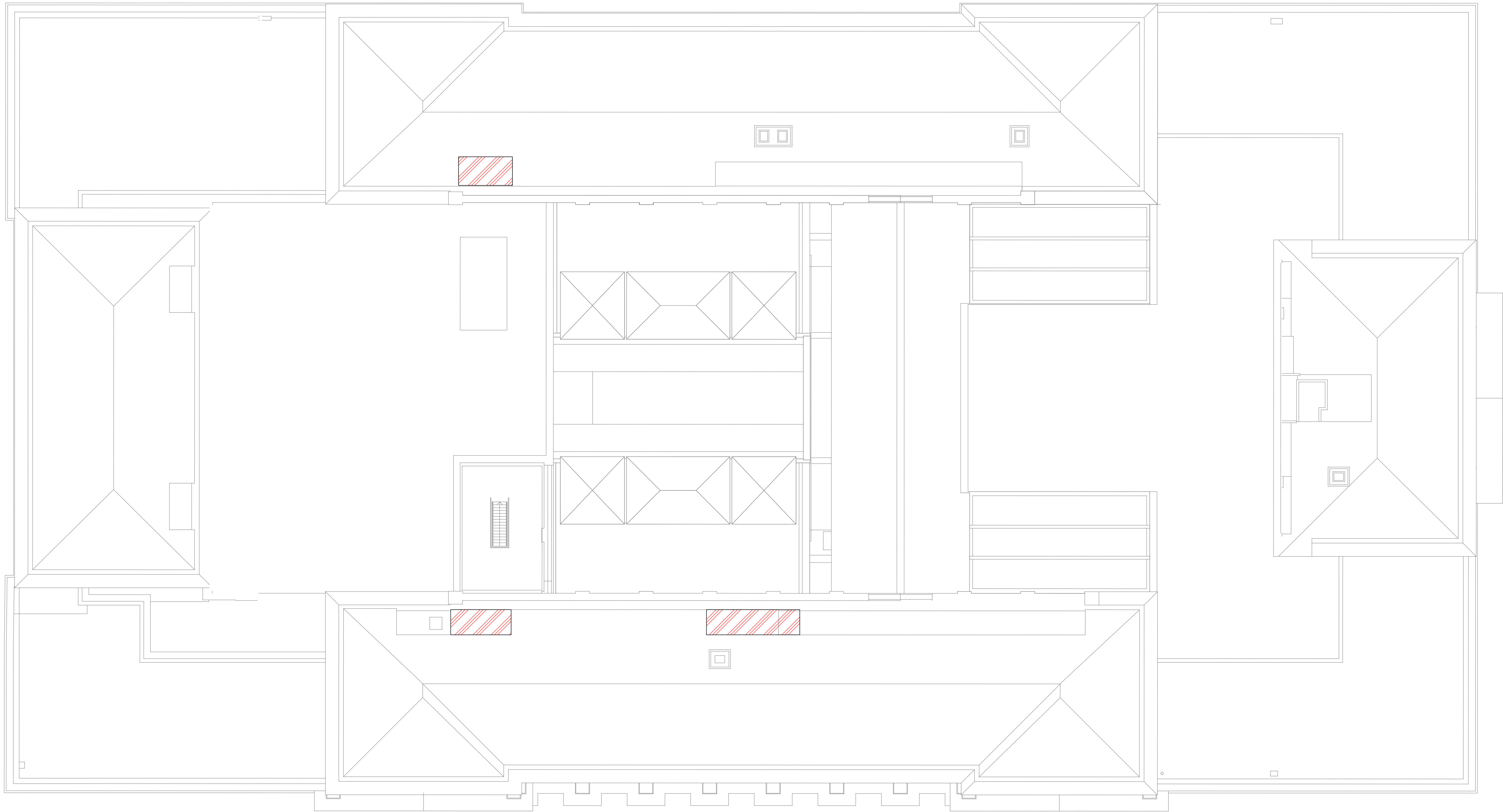
P1

20/03/2019 17:55:18



GENERAL NOTES  
1. DO NOT SCALE FROM THIS DRAWING.  
2. ALL DIMENSIONS ARE IN MILLIMETRES (mm) AND ALL LEVELS ARE IN METRES (m) UNLESS NOTED OTHERWISE.  
3. THIS DRAWING IS TO BE READ IN CONJUNCTION WITH ALL RELEVANT ARCHITECTS AND ENGINEERS DRAWINGS AND SPECIFICATIONS.

| STRUCTURAL WORKS |                          |
|------------------|--------------------------|
|                  | DEMOLITION AND NEW BUILD |
|                  | NEW BUILD                |
|                  | DEMOLITION               |



FOR THE EXTENT OF STRUCTURAL INTERVENTIONS TO INCORPORATE MEP BWH REQUIREMENTS, REFER TO HSK-048

ROOF KEY PLAN  
1:100

| P.2  | 20.02.19 | ISSUED FOR STAGE 3 | S4 | EA   |
|------|----------|--------------------|----|------|
| P.1  | 10.02.18 | ISSUED FOR COSTING | S1 | EA   |
| REV. | DATE     | DESCRIPTION        | BY | CHKD |
| 1    | 10.02.18 | ISSUED FOR COSTING | EA | EA   |

THIS DRAWING IS FOR INFORMATION ONLY. IT IS NOT TO BE USED FOR CONSTRUCTION. THE CLIENT ACCEPTS THE RESPONSIBILITY FOR THE ACCURACY OF THE DATA, DATA SUPPLIED.

THE CONTRACTUAL DRAWING INFORMATION PROVIDED BY ACT II UNDER OUR RESPONSIBILITY SHALL BE USED TO THE EXCLUSIVE BENEFIT OF THE CLIENT. WITH RESPECT TO DESIGN INFORMATION AND RESPONSIBILITY, SET OUT



Consulting Structural and Civil Engineers  
White Collar Factory,  
1 Old Street Yard,  
London  
EC1Y 8AF  
T +44 (0)20 7292 7777  
F +44 (0)20 7292 5555  
E info@akt-ii.com  
W www.akt-ii.com

CAMDEN TOWN HALL  
LENLEASE

CAMDEN TOWN HALL

ROOF LEVEL

| REV.    | DATE | DESCRIPTION | BY            | CHKD |
|---------|------|-------------|---------------|------|
| SH      | EA   | 13/02/2019  | A0            |      |
| STAGE 3 |      |             | S4            |      |
| STATUS  |      |             | REVISION CODE |      |

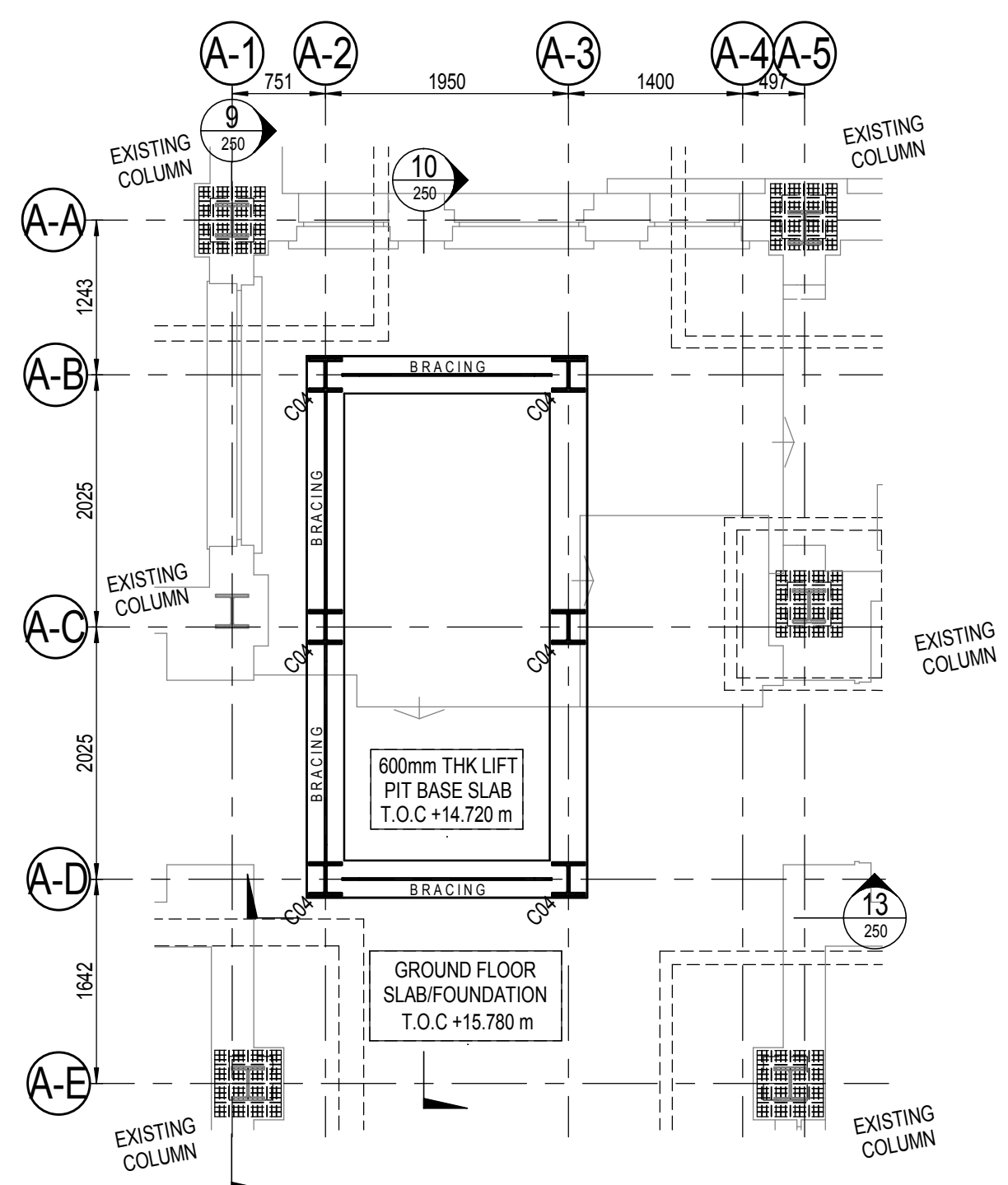
STAGE 3

CTH-AKT-RF-DR-20-S-105

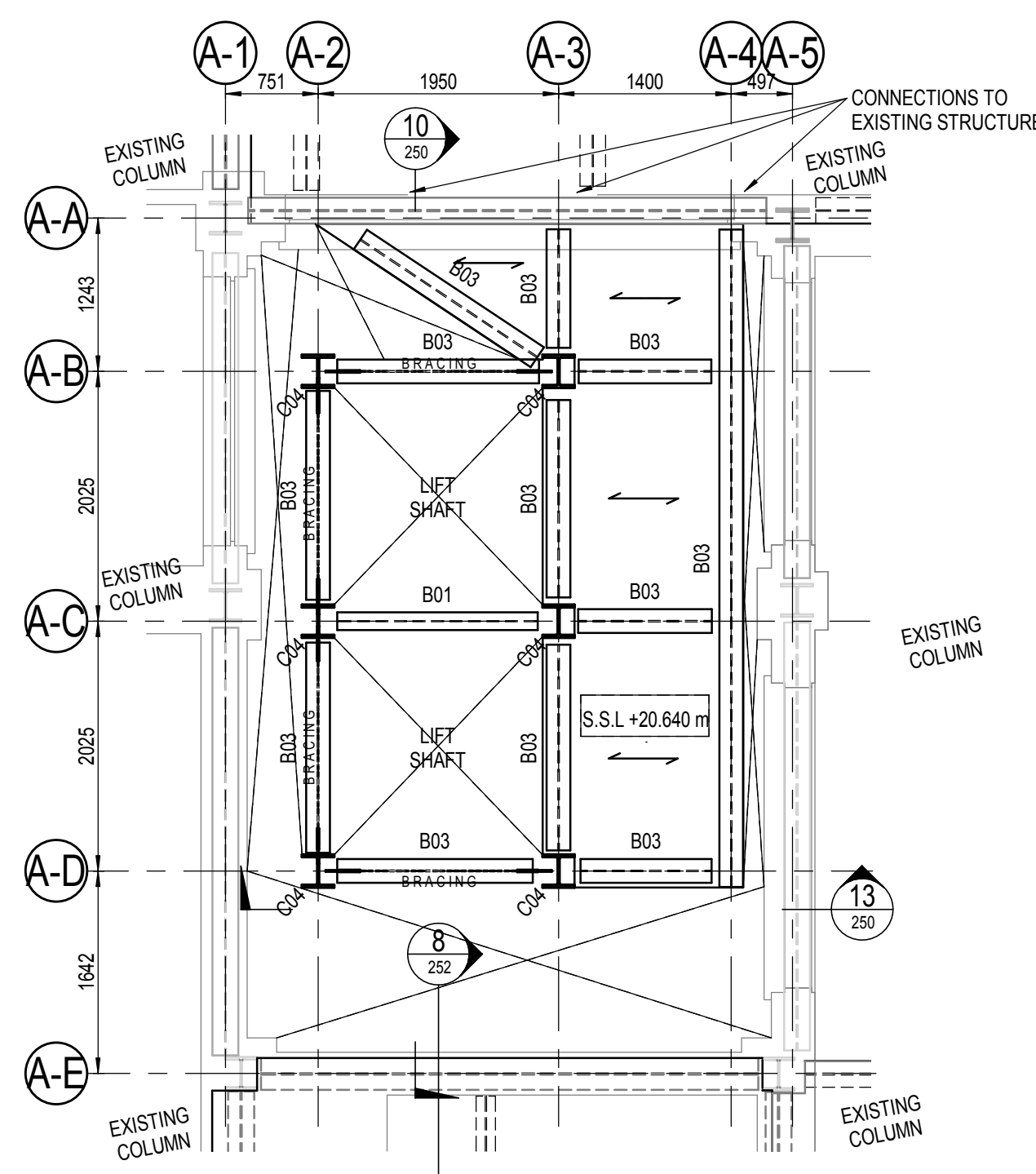
P2

20/02/2019 17:55:11

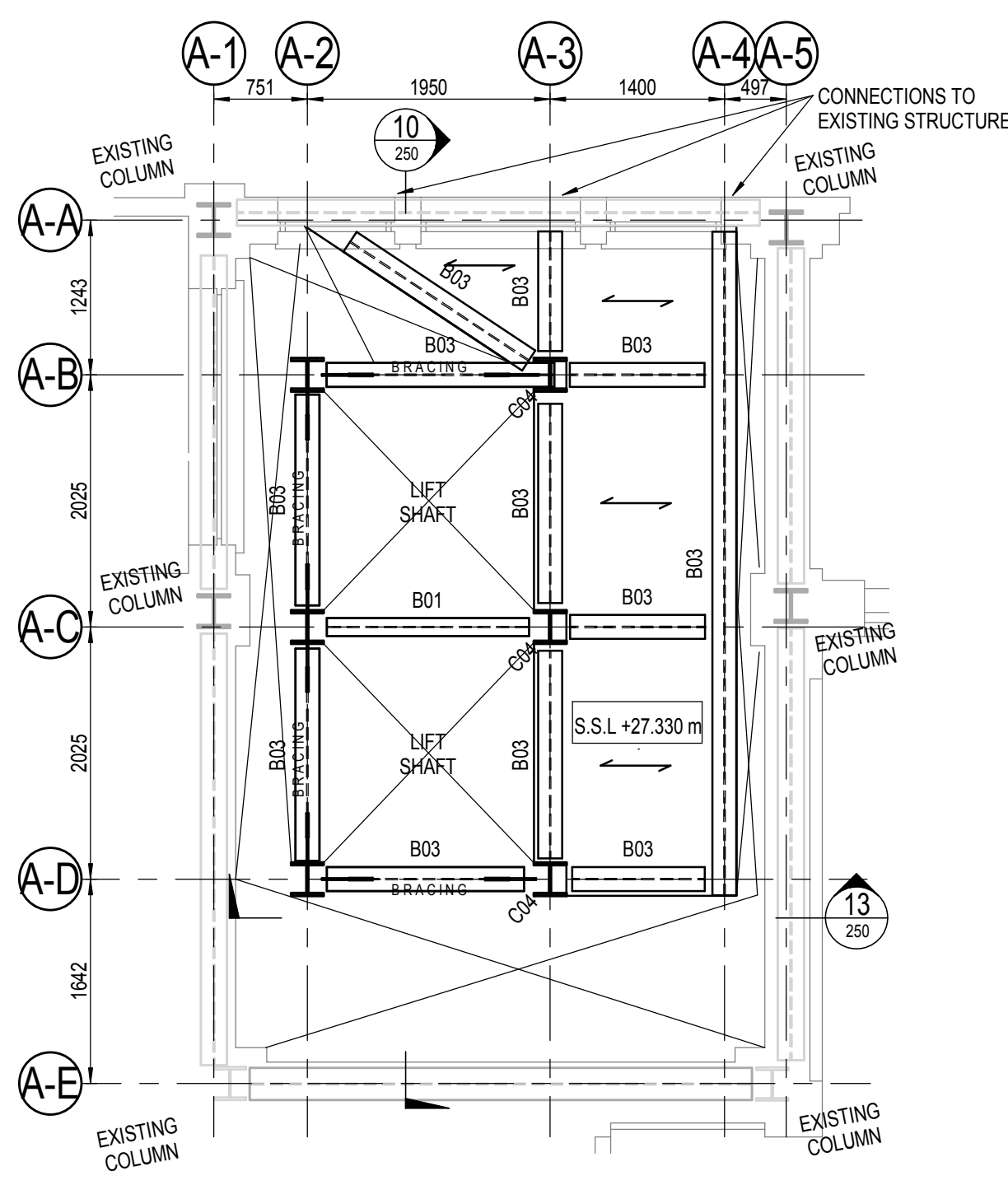




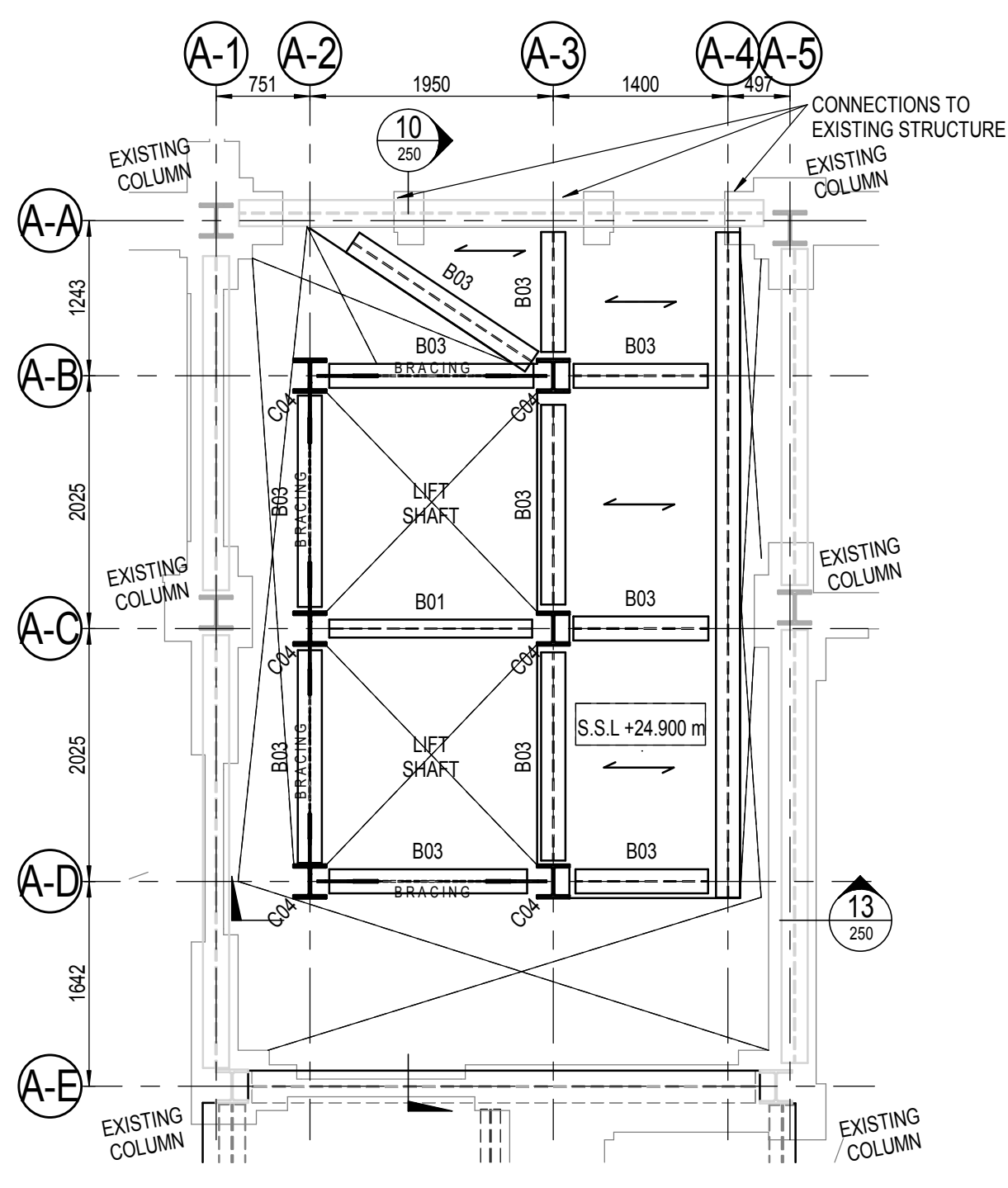
**BASEMENT LEVEL KEY PLAN - AREA A**  
1: 50



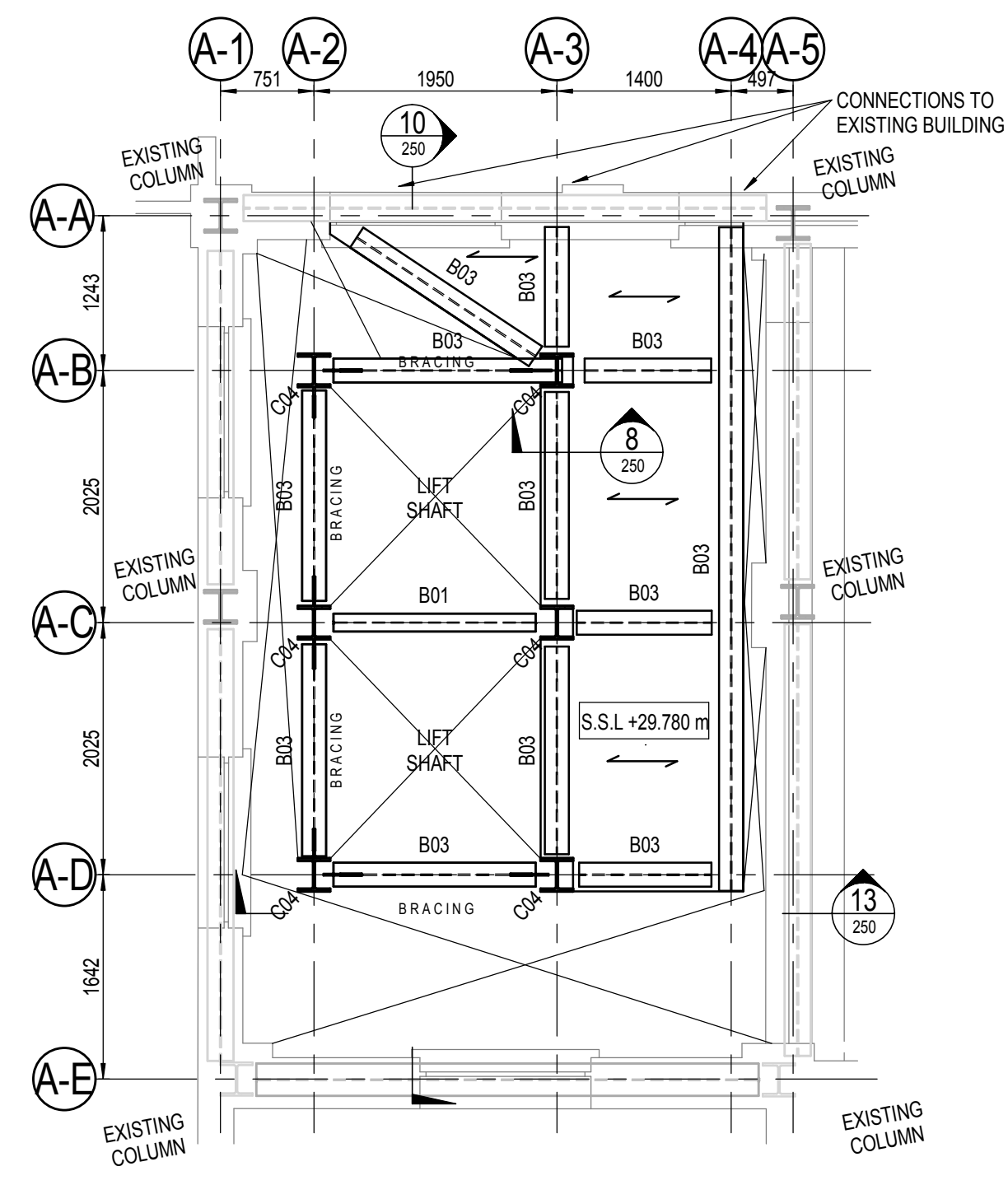
**GROUND LEVEL KEY PLAN - AREA A**  
1: 50



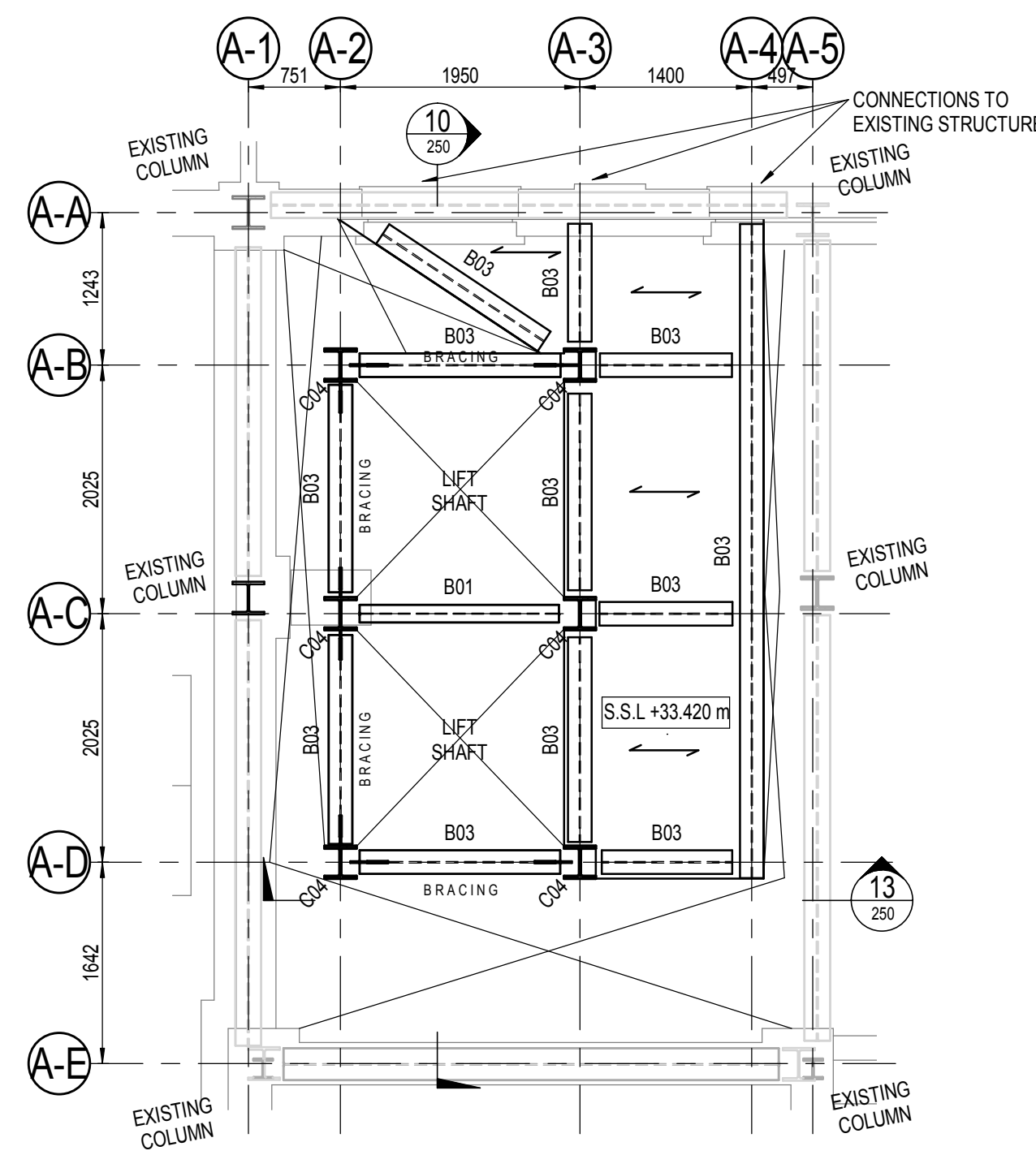
**LEVEL 01M KEY PLAN - AREA A**  
1: 50



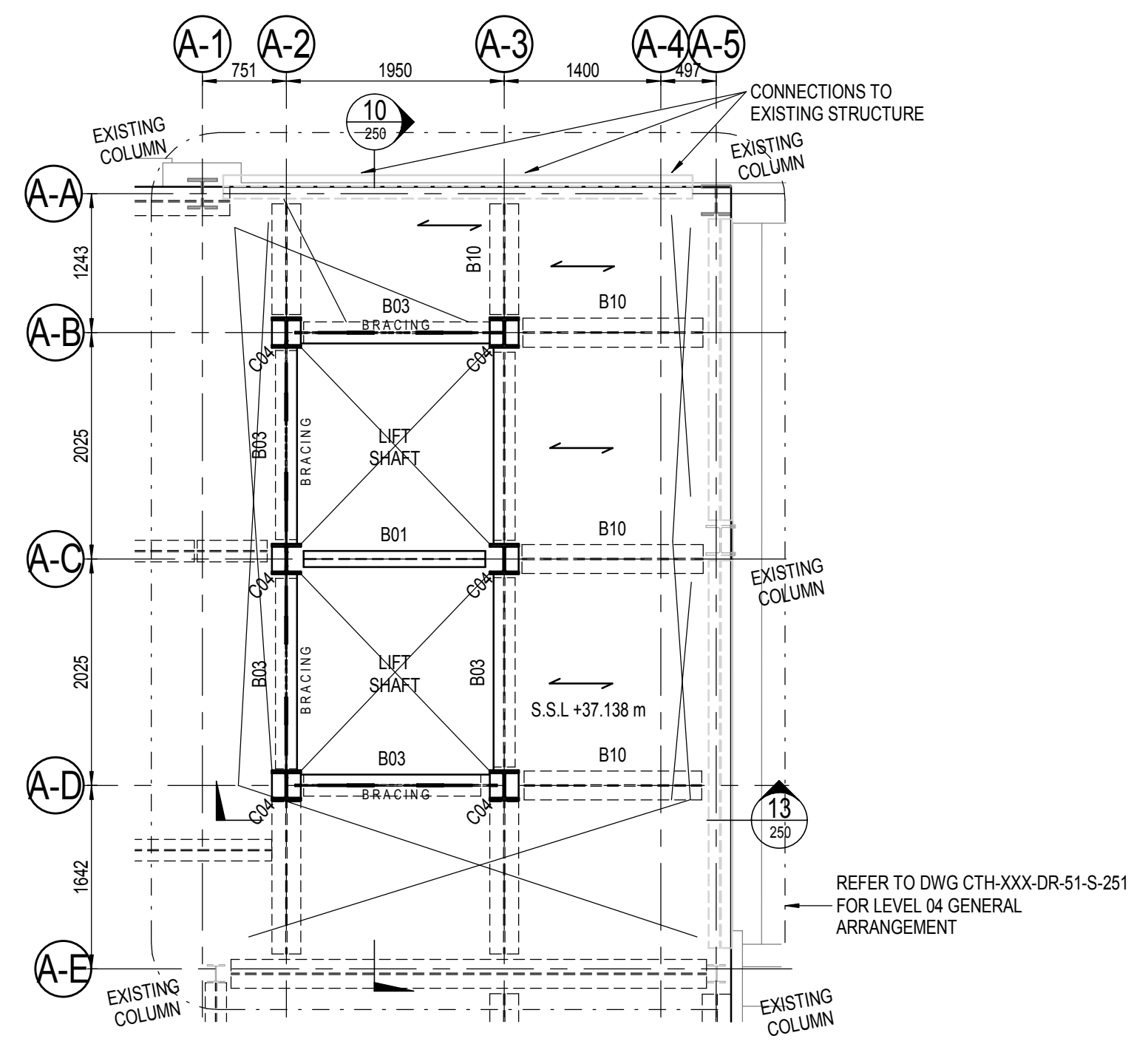
**LEVEL 01 KEY PLAN - AREA A**  
1: 50



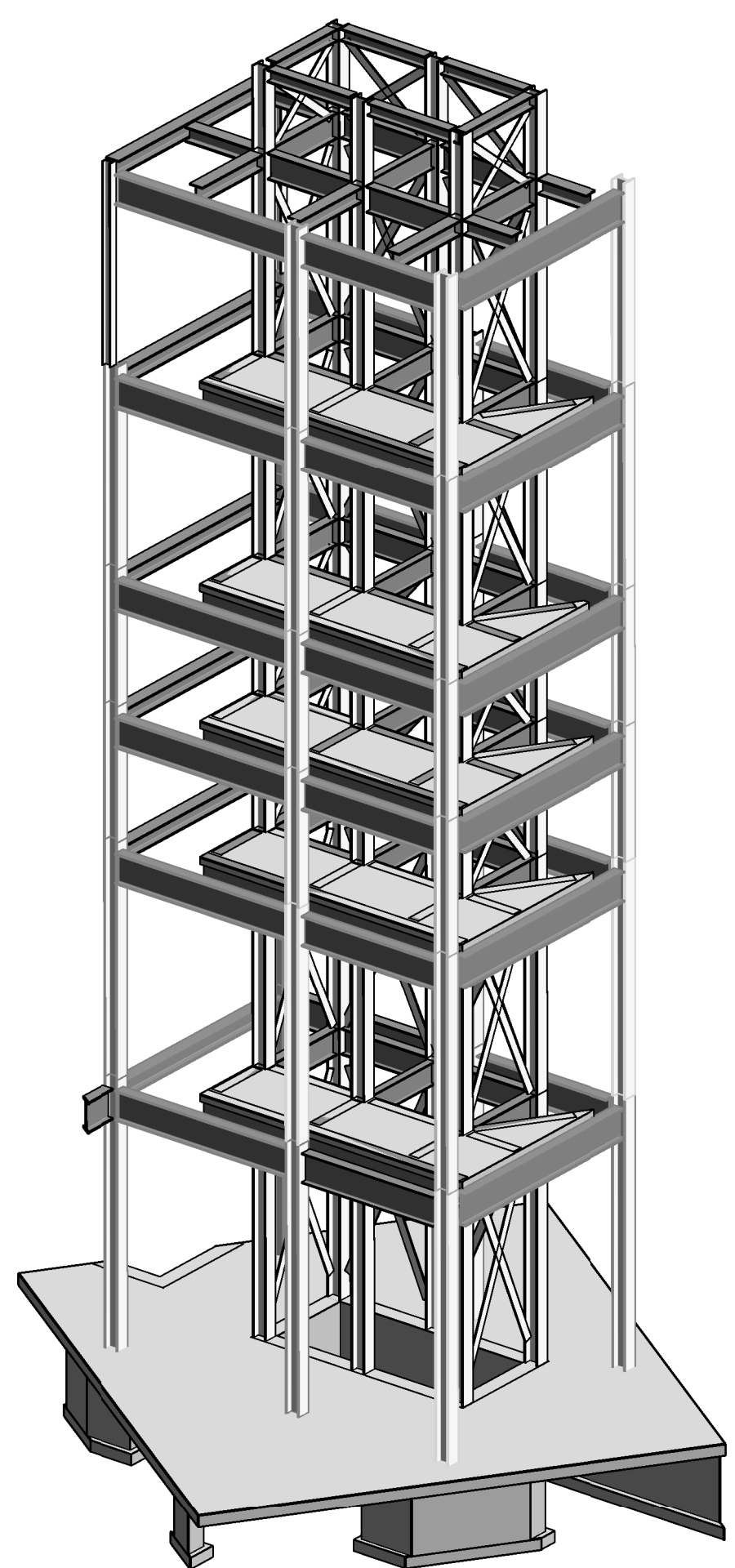
**LEVEL 02 KEY PLAN - AREA A**  
1: 50



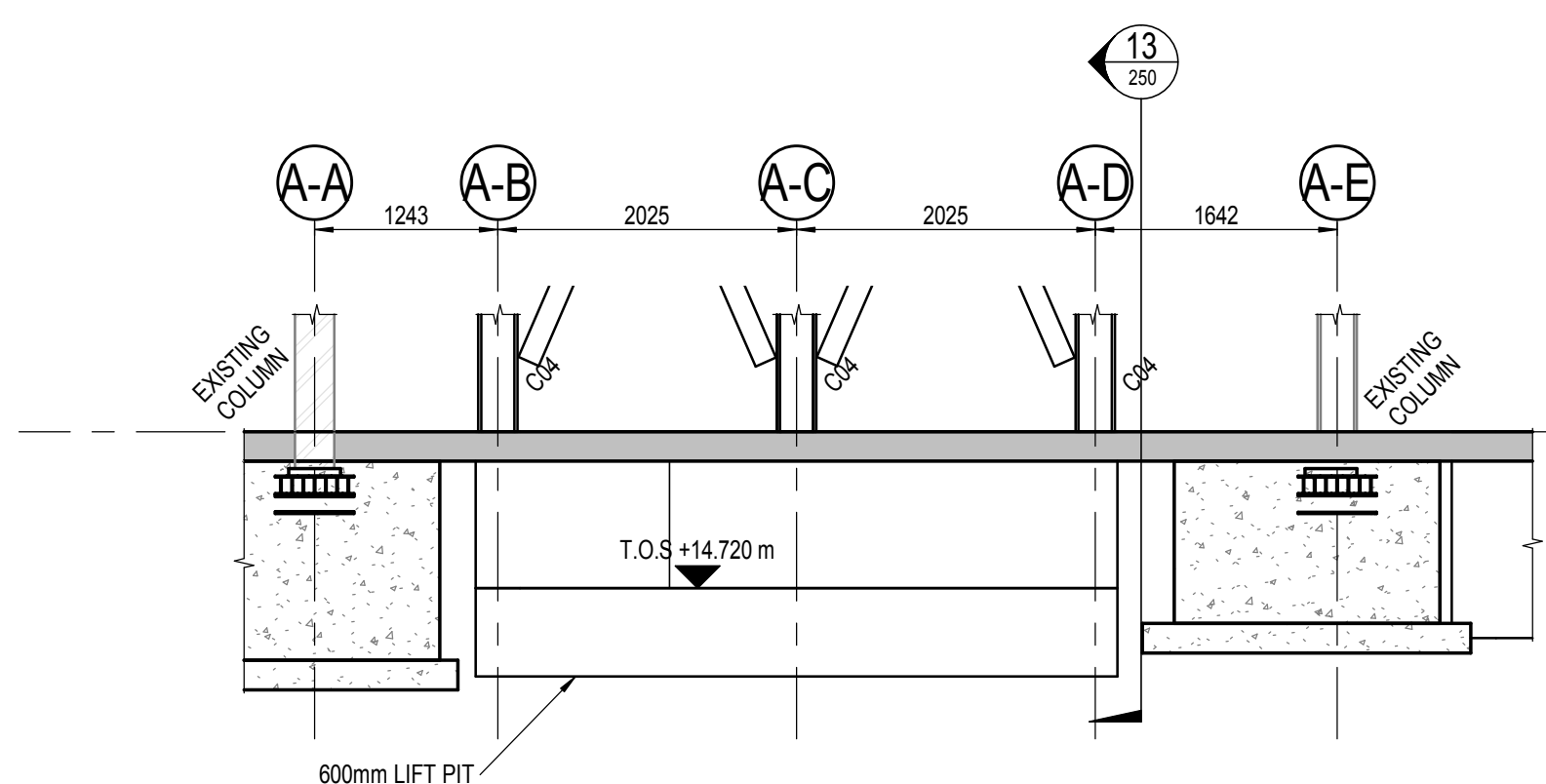
**LEVEL 03 KEY PLAN - AREA A**  
1: 50



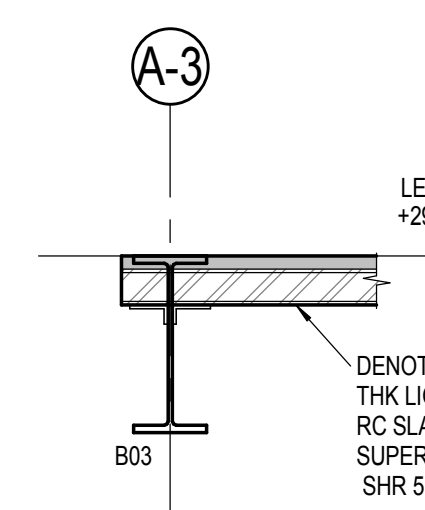
**LEVEL 04 KEY PLAN - AREA A**  
1: 50



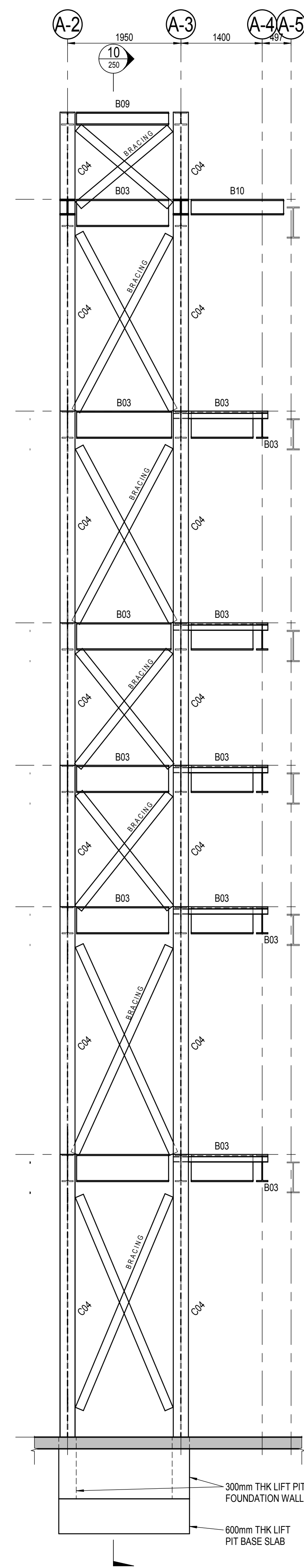
**3D VIEW - AREA A TOWER**  
1: 50



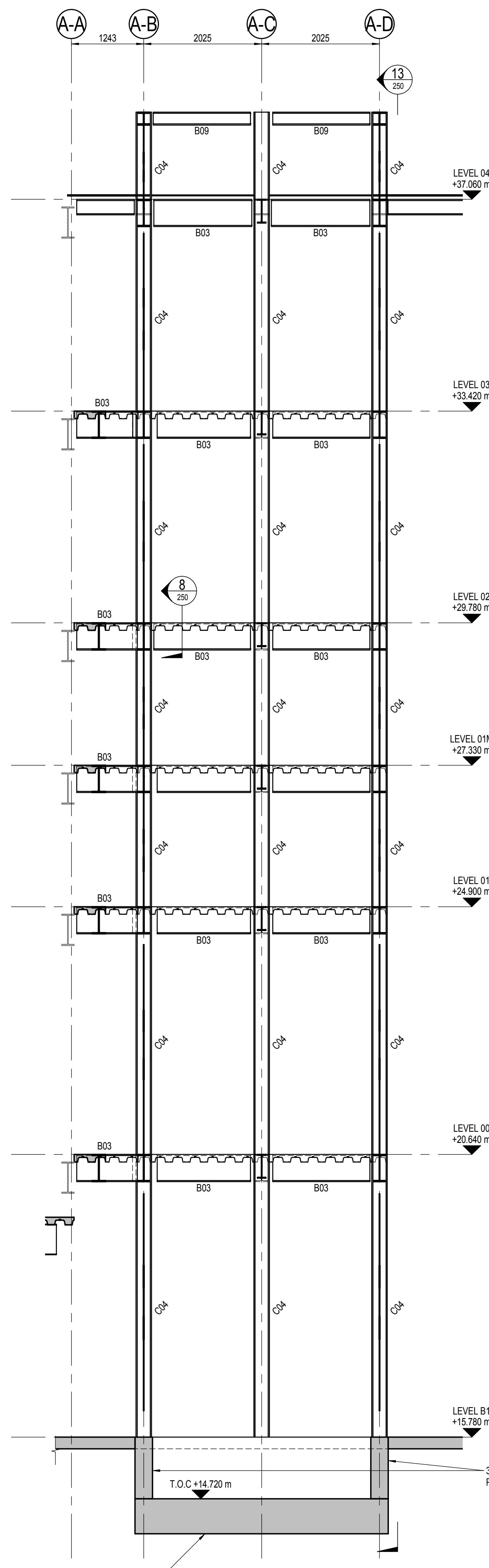
**SECTION 9**  
1: 50



**SECTION 8**  
1: 20



**SECTION 13**  
1: 50



**SECTION 10**  
1: 50

**GENERAL NOTES**  
1. DO NOT SCALE FROM THIS DRAWING.  
2. ALL DIMENSIONS ARE IN MILLIMETRES (mm) AND ALL LEVELS ARE IN METRES (m) UNLESS NOTED OTHERWISE.  
3. THIS DRAWING IS TO BE READ IN CONJUNCTION WITH ALL RELEVANT ARCHITECTS AND ENGINEERS DRAWINGS AND SPECIFICATIONS.

| STEEL BEAM SCHEDULE |                |
|---------------------|----------------|
| REFERENCE           | SIZE           |
| B01                 | UKB406x140x53  |
| B02                 | UKB457x151x69  |
| B03                 | UKB532x176x82  |
| B04                 | UKB532x176x82  |
| B05                 | UKB532x176x82  |
| B06                 | UKC152x152x51  |
| B07                 | UKC355x368x129 |
| B08                 | UKC355x368x129 |
| B09                 | UKC203x203x68  |
| B10                 | UC254x254x107  |
| BRACING             | 15X150         |
| LIFT                | L60x60x8       |

| STEEL COLUMN SCHEDULE |                |
|-----------------------|----------------|
| REFERENCE             | SIZE           |
| C01                   | UKC152x152x51  |
| C02                   | UKC152x152x51  |
| C03                   | UKC203x203x68  |
| C04                   | UKC254x254x107 |
| C05                   | UKC355x368x129 |

DENOTES 120 mm THK LIGHTWEIGHT RC SLAB ON SUPERHOLORIB SHR S1150 1.00 mm

P: 1 - 20/01/19 - ISSUED FOR STAGE 3  
REV: 1 - DATE - DESCRIPTION  
WHEN SPECIAL MODELS/DETAILS ARE ISSUED, THESE ARE PROVIDED FOR INFORMATION ONLY. INFORMATION IS NOT TO BE USED FOR CONSTRUCTION OF THE PROJECT. THE USER ACCEPTS THE RESPONSIBILITY FOR THE ACCURACY OF THE SPECIAL DATA SUPPLIED.  
THIS CONTRACTUAL DRAWING/INFORMATION PRODUCED BY AKT II UNDER OUR RESPONSIBILITY AND LIMITED TO THE DESIGNING ENGINEER'S OBLIGATION WITH RESPECT TO THE CONTRACTUAL DRAWING/INFORMATION. SET THIS OUT.



Consulting Structural and Civil Engineers  
White Collar Factory,  
1 Old Street Yard,  
London  
EC1Y 1AF  
T: +44 (0)20 7250 7777  
F: +44 (0)20 7250 5555  
E: info@akt-ii.com  
W: www.akt-ii.com

**CAMDEN TOWN HALL  
LENLEASE**

**CAMDEN TOWN HALL**

**AMENDED AREAS - A**

| DATE    | BY      | DATE | BY |
|---------|---------|------|----|
| SH      | EA      | AD   | AD |
| STAGE 3 | STAGE 3 | S4   | S4 |

**STAGE 3**

**CTH-AKT-XXX-DR-51-S-250**

**P1**